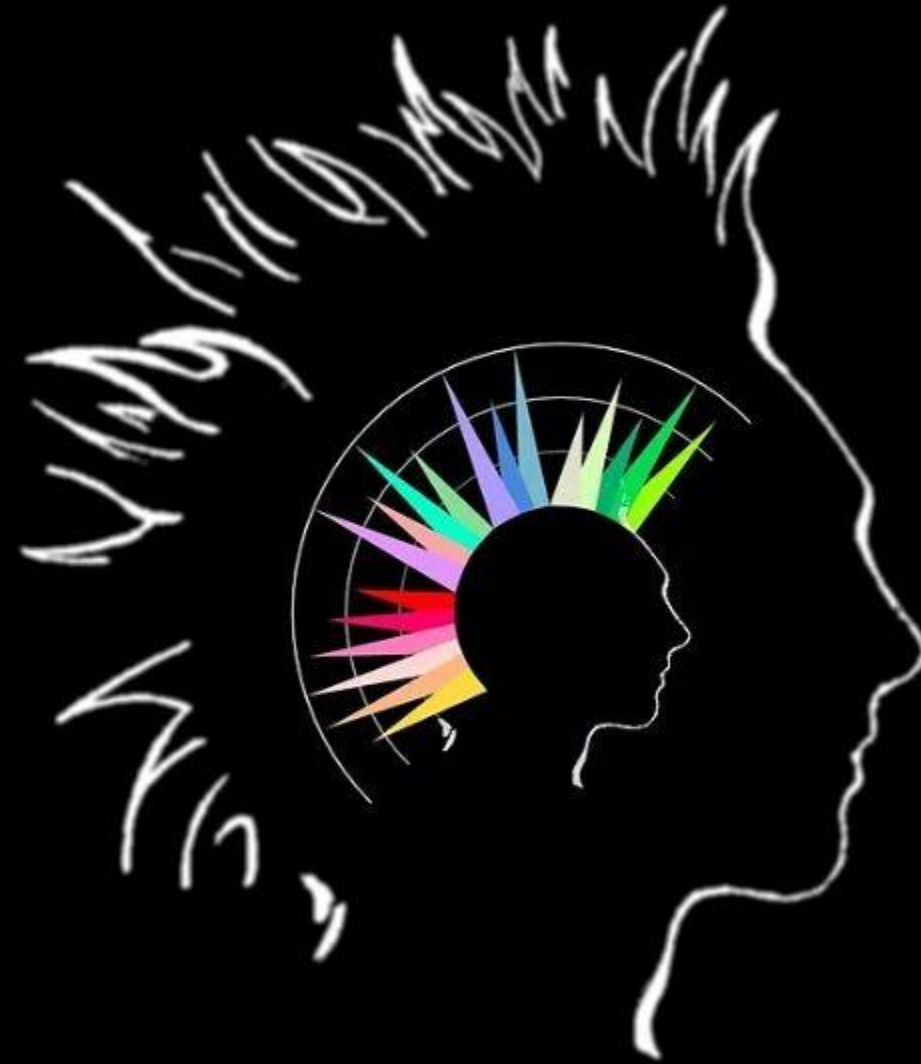


M
I
S
F
I
T
S



H
A
R
M
O
N
Y

The Intellectual and Immaterial Bank (IIB) by Wise Jester, Oslo, Norway

<https://intellectualandimmaterialbank.com/>

**Wouldn't it be nice if you knew earlier that
what you're doing is silly mainstream,
you've been lied to all this time,
you're surrounded by A4-minds,
or you should have avoided someone?**

you as a
company

you as an
individual



you are here, crying in
the shower before work

Friend: How many people work at your company?

Me: About half of them.



Wise Jester

**Are you after a safe distance to stay genuine?
Are you after a few, but trustworthy relations?**

...which would keep you focused... 

...and your environment be like...

How to push that sucker to do the job?

Them: You should put yourself out there. Be a Social Butterfly.

Me:



...sure...

YOU ARE:

an independent professional or an author of a collaboration (team lead, lab owner...)

neurotypical or neurodivergent (usually, the former avoid the latter because everything different from the typical is scary)

having multiple interests (do not drop one to specialize on another but compile them! Enjoy Physics, Law, Music, Computation, Sports, Design, Communication....)

...because all that is **HOLISTIC**

HOW TO APPLY THAT RIGHT?

Through IIB by Wise Jester:

<https://intellectualandimmaterialbank.com/>

In IIB, you are

an individual

a collaboration

represented by strengths

represented by needs

“supply”

“demand”

(-)

OR

(+)



Because IIB interacts with people, based on their sense of humor

...with humor, insight happens when people irrationally figure out that one resolution is wrong, and they solve it with a correct one...

...and, also, IIB provides each person with choice making, where all the variants on the screen are diverse enough and in harmony with the one...



[Team Wise Jester](#)

[What IIB is](#)

[Use cases](#)

[News about IIB](#)

[Log in](#)



M

H

I wonder, where did people cough before theater was invented?



13/36

IN NO DISTRACTION, INITIATE AND LEAD CHANGE PROCESSES: INVOLVE, EXPERIENCE LIGHT DISCOMFORT, HAVE ALTERNATIVES

BEGIN AS AN INDEPENDENT PROFESSIONAL

BEGIN AS AN AUTHOR OF A COLLABORATION

INDIVIDUAL AS A NODE = STRENGTHS (-)



- | | |
|----------------------------------|--|
| preferred
comfort zones | <ul style="list-style-type: none"> ■ Low-pressure contexts ■ Contexts with high uncertainty ■ Collectivistic environments ■ High-pressure contexts ■ Independent genre |
| instant-th.
triggers | <ul style="list-style-type: none"> ■ Social signals ■ Cognitive signals ■ Emotional signals ■ Knowledge ■ Focused aim |
| deep-th.
triggers | <ul style="list-style-type: none"> ■ Solidarity with others ■ Imagination ■ Coming up with alternatives ■ Faster taking the new into practice |
| capacities for
transformation | <ul style="list-style-type: none"> ■ Having a discovery mindset, capable of synthesis ■ Proposing idiotic ideas, which will be right soon ■ Breaking old things down faster ■ Standing for flat collaboration of hybrid competencies |

Your strongest capacity for making change is having a discovery mindset, capable of synthesis.

While thinking, you are rather after imagination.
You tend to react immediately to cognitive signals.
You prefer working in independent genre.

**Complex Systems, Hybrid Innovation, Entrepreneurship,
Social Work, Music**

COLLABORATION AS A NODE = NEEDS (+)

- | | | | |
|--|---|---|-----------------------------------|
| needs in transformation | Intellectual depth | tendency to ignore | disruption of comfort |
| ■ Potential for synergic collaboration | ■ Degree of inner passion of the members | ■ Obvious needs in new, unknown ideas | ■ Seeing the big picture |
| ■ Fear of deviation | ■ Structures and processes that are stuck | ■ Being too down-to-earth | ■ Ignoring uniqueness |
| ■ Being too dispersed | ■ Siloed thinking | ■ How others feel | ■ Facts and numbers |
| ■ The socially accepted | ■ Accountability and transparency | ■ Slowing down for well-ordered actions | ■ Expecting individual initiative |
| ■ Demanding clarity and plan | ■ Pressuring the members | | |

Needs of your collaboration



Your collaboration may have a challenge with fear of deviation.

Your collaboration may experience ignoring uniqueness. Your collaboration might be overlooking how others feel.

Your collaboration disrupts comfort zones by expecting individual initiative.

IIB helps people “see” each other

**differences
in reading
new information**

**individual
deeper reasonings
+ at least 3 out of 5
subjects**

**differences
in perceiving
the normal**

As an individual, you receive RELATIONS, which

**don't require you to be nice
make you avoid seeking likes
relieve you from content creation
...and other tortures of social media**

as opposed to



**inform your strengths
make yourself a start point
you own, along with all your data
...and detect "your" thinkers and doers**

**in blindness to your and others' "facial" data,
only on humor data + pick on multiple subjects**

M
I
S
F
I
T
S



Wise Jester

H
A
R
M
O
N
Y

Also, as an **individual**, you may find a whole **COLLABORATION** for you!

IIB ensures that inside every collaboration, presented to you, you will find at least one person, who may become your friend or intellectually reliable partner, so your inclusion is guaranteed



Wise Jester

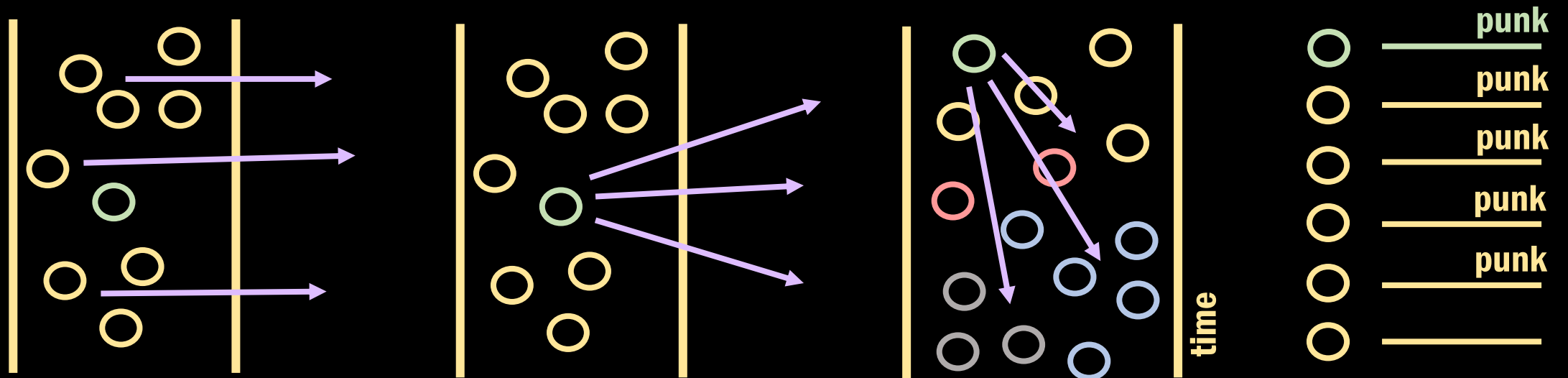
As an author of a collaboration (team lead), you attract and receive

external strangers to pick, who are able to deal with the needs of your team

external strangers to pick, who are harmonious with you to strengthen up you

semi-strangers to include, whom your people have worked with earlier

clarity about whom you are working with already or are about to include



in blindness to facial data

Wise Jester

only with humor data + prof domains

WHAT SORT OF **EFFECT** THAT YOU RECEIVE FROM IIB?

The Emergence Effect at your organization, when $2+3=9$. What is it?

People with a healthy sense of humor, who are several hundred in IIB by spring 2022, have relatively rare natural abilities to interconnect diverse domains of knowledge – because humor activates distant areas of the brain – triggered to create irrationally new, correct meanings.

Their collaborations, based on some intersection in deeper reasoning and differences in noticing details, reduce the risk of conflicts, as they are working long-term on seriously important projects.

BY WHEN?

Deeper reasoning is slow, and it stands for only 25% of the total mental activity, which makes max 2 hours per workday effective. Thus, the effect will reveal itself solidly in at least 3 weeks of active collaboration.



Wash your clothes while exercising:
save electricity, boost your muscles...

ADDED VALUE THAT YOU RECEIVE

Deeper thinking intensifies by \cong

65% if you + 1 pers.

60% if you + 2 pers.

55% if you + 3 pers.

etc.

BECAUSE OF

...increasing space for emergent ideas by \cong

15% if you + 1 pers.

25% if you + 2 pers.

30% if you + 3 pers.

etc.

AND...

...sharpening **focus on the vision**/goal by \cong

$\frac{3}{5}$ if you + 1 pers.

$\frac{2}{3}$ if you + 2 pers.

$\frac{5}{7}$ if you + 3 pers.

etc.

WITH

...mutual learning from
complementarity and difference in
all cases growing by \cong 15%

ADDED VALUE THAT YOU RECEIVE

**Saving time on intense and effective
deeper thinking**

for more accurate decision making

you + 1 pers. \cong 50 min

you + 2 pers. \cong 15 min

you + 3 pers. \cong 10 min

**considering that deeper thinking takes only
2 hours of the entire 8-hour workday
according to default brain performance**

**...and, of course, kind, nerdy
jokes for pampering
your inner child
at any time**

**ALL THAT BEING IN A
BLIND
SELF-ORGANIZING NETWORK**

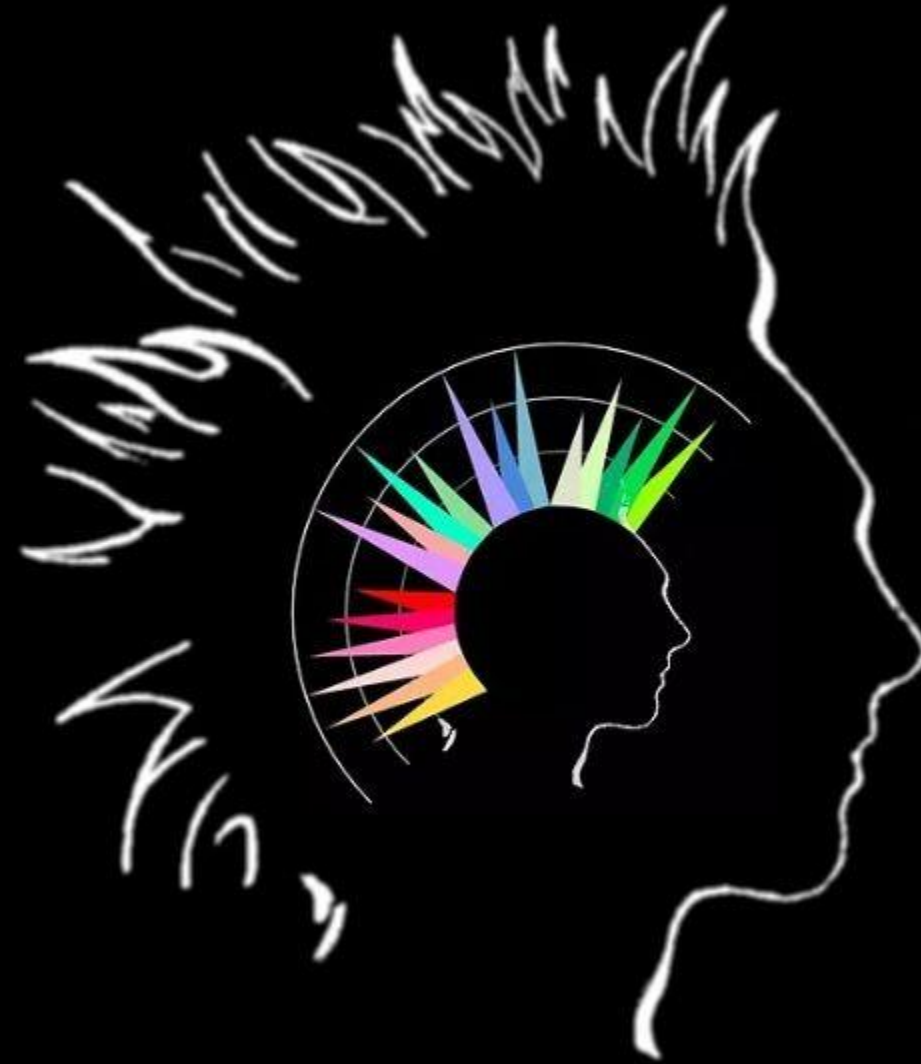
If you're right brained, you'll see a dog. If you're left brained, you'll see a giraffe...



What would this be?

**Mail your guess to Anna at
wisejester@intellectualandimmaterialbank.com**

M
I
S
F
I
T
S



H
A
R
M
O
N
Y

WOULD YOU TRY IIB?

<https://intellectualandimmaterialbank.com/>