



THE
TROCHANTERIIDAE
OF
SOUTH AFRICA

Compiled by: A.S. Dippenaar-Schoeman, C.R. Haddad, S.H. Foord & L.N. Lotz

South African National Survey of Arachnida Photo Identification Guide Trochanteriidae 2022 version 2: 1-18

©Peter Webb

THE TROCHANTERIIDAE OF SOUTH AFRICA

Dippenaar-Schoeman, A.S.¹, Haddad, C.R.², Foord, S.H.¹, & Lotz, L.N.³ 2022. The Trochanteriidae of South Africa. *South African National Survey of Arachnida Photo Identification Guide: Version 2: 1-18.*

¹Department of Zoology, University of Venda, Private Bag X5050, Thohoyandou, 0950, South Africa;

²Department of Zoology and Entomology, University of the Free State, P.O. Box 339, Bloemfontein, 9300, South Africa

³National Museum, Bloemfontein, P.O. Box 266, Bloemfontein, 9300 South Africa

ABSTRACT

The family Trochanteriidae is represented by 6 genera and 51 species. Only one genus *Platyoides* known from 17 African species is represented by ten species from South Africa. Five of the species are South African endemics. Five species have a wide distribution and are listed as Least Concern. The other five species are either known only from one sex or known from a restricted number of localities and are presently listed as Data Deficient.

ACKNOWLEDGEMENTS

We thank the Agricultural Research Council (ARC) and the South African National Biodiversity Institute (SANBI) Threatened Species Programme; the Universities of the Free State, Venda and Pretoria; the National Research Foundation (NRF) for generously funding and support. The staff of the Arachnology section at the National Collection of Arachnida (Connie Anderson, Petro Marais, Sma Mathebula, Robin Lyle and Annette van den Berg), as well as several volunteers from the public, are thanked for their assistance with the sorting and databasing of specimens collected during the SANSA surveys. Various students, members of the public and members of the Spider Club of South Africa collected material for SANSA. We also thank the South African National Parks, E. Oppenheimer & Son for support and providing opportunity to collect in the parks and reserves. All the provincial conservation agencies for collecting permits. We are especially thankful to all the photographers that have provided photographs for the SANSA Virtual Museum without their contribution this guide would have not been possible.



CONTENTS

FAMILY TROCHANTERIIDAE	4
GENUS <i>PLATYOIDES</i> O. Pickard-Cambridge, 1891.....	4
QUICK KEY TO THE SPECIES.....	5
• <i>Platyoides alpha</i> Lawrence, 1928.....	6
• <i>Platyoides costeri</i> Tucker, 1923	7
• <i>Platyoides leppanae</i> Pocock, 1902	8
• <i>Platyoides pictus</i> Pocock, 1902	9
• <i>Platyoides pirie</i> Platnick, 1985	10
• <i>Platyoides pusillus</i> Pocock, 1898	11
• <i>Platyoides quinquentatus</i> Purcell, 1907	12
• <i>Platyoides robertsi</i> Haddad, 2022	13
• <i>Platyoides rossi</i> Platnick, 1985	14
• <i>Platyoides walteri</i> (Karsch, 1886)	15-16
New species.....	17
REFERENCES	18



Platyoides walteri from Wesselsbron Photo S. Willemse

FAMILY TROCHANTERIIDAE Karsch, 1879

The family Trochanteriidae is represented by 6 genera and 51 species. They are medium-sized; two-clawed; eight eyes spiders with a flattened body; laterigrade legs and fourth trochanters elongated. Only one genus *Platyoides* is known from Africa (World Spider Catalog 2022).

GENUS *PLATYOIDES* O. Pickard-Cambridge, 1891

The genus *Platyoides* is represented by 17 species from Africa with ten species recorded known from South Africa.

COMMON NAME: Scorpion Spiders

TYPE SPECIES: *Platyoides walteri* (Karsch, 1886)

MORPHOLOGY: Body size male and female 4-9 mm. Colour: bodies dark brown to grey with abdomen uniform or with pale markings, some species with longitudinal bands. Carapace flattened; longer than wide, widest over coxae II-III; eyes 8 in 4 rows (4:4) with both rows almost straight; posterior row wider than the anterior row; posterior median eyes are flattened and irregular; all eyes except posterior median eyes are circled with black pigment; chelicerae enlarged, laterally divergent, projecting forward, with long curved fangs, Abdomen flattened; ovoid. Legs laterigrade; trochanters elongated especially IV, folding over the body.

LIFE STYLE: Free-living wanderers commonly found under bark or stones. They are found in a wide temperature range, from dry arid regions to humid forest areas. Very little is known about their behaviour. Their flattened bodies are an adaptation for life in narrow crevices under the bark or on rocks. *Platyoides walteri*, the most common species in Southern Africa is synantropic and frequently found on walls in buildings or they are common on verandahs where they are found underneath plant containers (Dippenaar-Schoeman 2014).

TAXONOMIC NOTES: The genus was revised by Platnick (1985).



Platyoides walteri from Kemptonpark Photo W. Schmidt

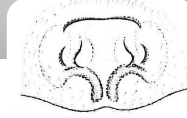
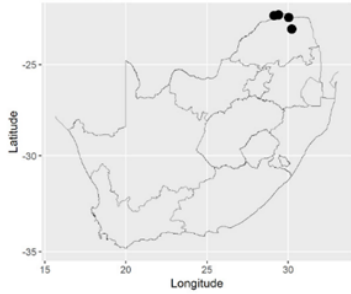


Platyoides spp. showing eye pattern and the long trochantera Photo ASD

QUICK KEY TO SOME SPECIES

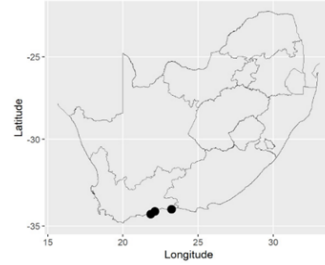
Platyoides alpha

Platyoides alpha
Lawrence, 1928



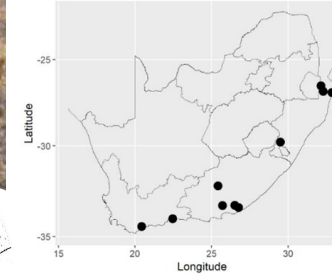
Platyoides costeri

Platyoides costeri
Tucker, 1923



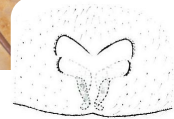
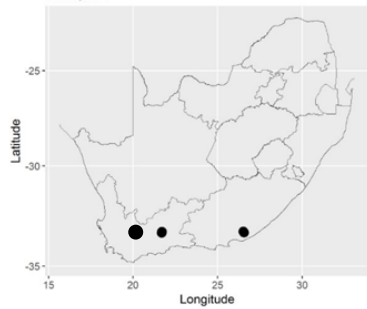
Platyoides leppanae

Platyoides leppanae
Pocock, 1902



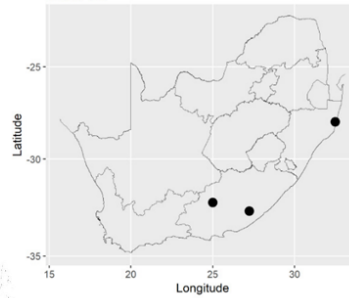
Platyoides pictus

Platyoides pictus
Pocock, 1902



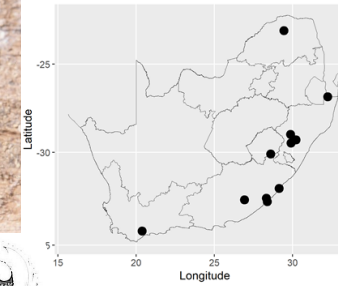
Platyoides pirie

Platyoides pirie
Patrik, 1985



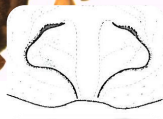
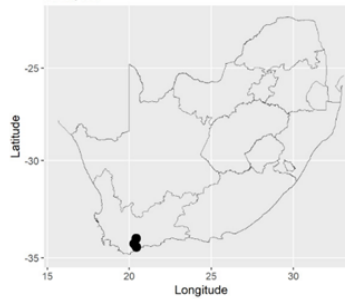
Platyoides pusillus

Platyoides pusillus
Pocock, 1898



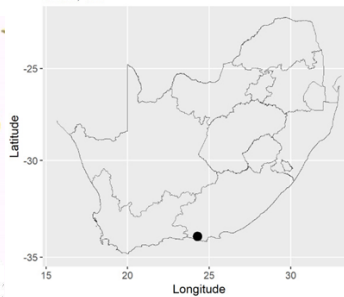
Platyoides quinquedentatus

Platyoides quinquedentatus
Purcell, 1907



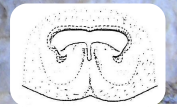
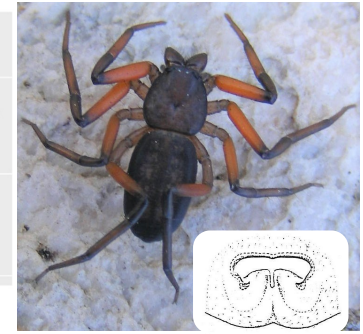
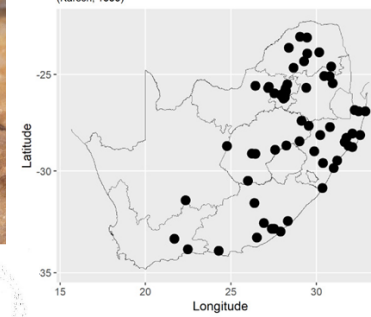
Platyoides rossi

Platyoides rossi
Patrik, 1985



Platyoides walteri

Platyoides walteri
(Karsch, 1886)



Platyoides alpha Lawrence, 1928

COMMON NAME: Namibia Scorpion Spider

NATIONAL STATUS: LC

NATIONAL RATIONALE: A southern African endemic described by Lawrence (1928) from Namibia. Recorded from four southern African countries. In South Africa known only from Limpopo (EEO=3 647 km²; AOO=16 km²; 514-1360 m a.s.l.). Due to its wide geographical range, the species is listed as Least Concern.

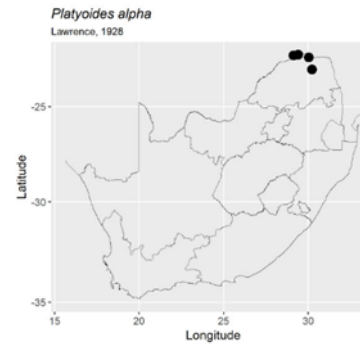
LIFESTYLE: Free-living wanderers with flattened bodies an adaptation to life in narrow crevices under bark or under rocks. Sampled from the Forest and Savanna biomes (Foord et al. 2011).

GLOBAL DISTRIBUTION: Angola, Namibia, Botswana, South Africa.

DISTRIBUTION IN SOUTH AFRICA: *Limpopo*: Mussina (-22.33, 30.03); Entabeni State Forest (-23, 30.23); Ons Eigegronnd (-22.19, 29.4); Limpopo Valley Nature Reserve (-22.22, 29.13).

CONSERVATION MEASURES: There are no significant threats to this species. In South Africa protected in the Limpopo Valley Nature Reserve and Entabeni State Forest.

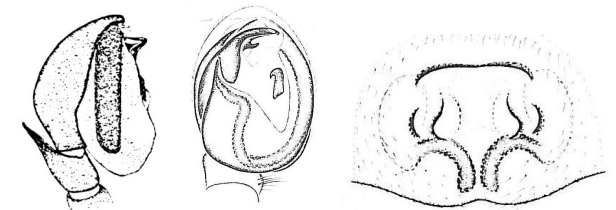
TAXONOMIC NOTES: Revised by Platnick (1985), known from both sexes.



Platyoides alpha female from Namibia Photo Anka Eichhoff



Platyoides alpha female after O. Pickard-Cambridge(1908).



Genitalia after Platnick (1985)

Platyooides costeri Tucker, 1923

COMMON NAME: Mosselbay Scorpion Spider

NATIONAL STATUS: DDT

NATIONAL RATIONALE: A Western Cape endemic described BY Tucker (1923) from Mossel Bay. Known only from the Western Cape (EOO=704 km²; AOO=12 km²; 4-250 m a.s.l.). The status of the species remains obscure. Some more sampling is needed to collect the male and to determine the species' range. Therefore, listed as Data Deficient for taxonomic reasons.

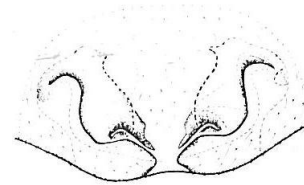
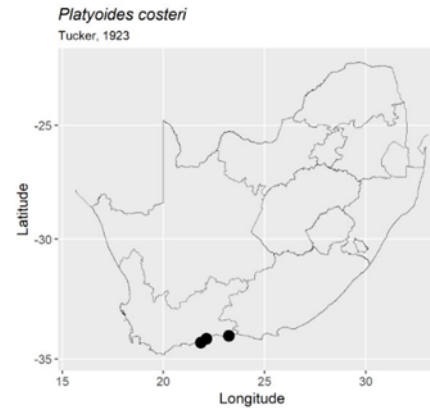
LIFESTYLE: Free-living wanderers with flattened bodies, an adaptation to life in narrow crevices under bark or under rocks. Sampled from the Fynbos biome.

GLOBAL DISTRIBUTION: South Africa.

DISTRIBUTION IN SOUTH AFRICA: *Western Cape:* Mossel Bay (-34.18, 22.12); Robberg Nature Reserve (-34.06, 23.24); Borrelfontein, 8 km W of Gouritz Mouth (-34.33, 21.85).

CONSERVATION MEASURES: The threats to this species are not known but the status of the species remains obscure and more sampling needed to collect the male. Species protected in the Robberg Nature Reserve

TAXONOMIC NOTES: Revised by Platnick (1985), known from only the female. Male collected but still undescribed.



Epigyne after Platnick (1985)



Platyooides costeri from Robberg Photo Eben Lourens

Platyoides leppanae Pocock, 1902

COMMON NAME: Leppan's Scorpion Spider

NATIONAL STATUS: LC

NATIONAL RATIONALE: An African endemic described by Pocock (1902). Recorded from four African countries. From South Africa known from three provinces (EEO=222 135 km²; AOO=40 km²; 15-1551 m a.s.l.). Due to its wide geographical range, the species is listed as Least Concern.

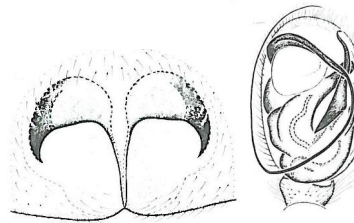
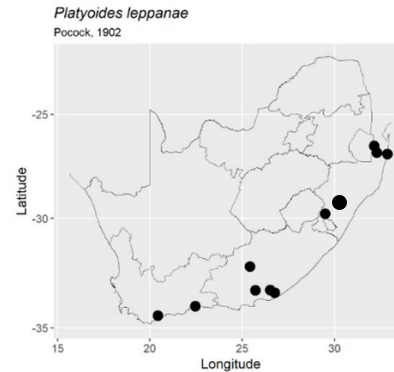
LIFESTYLE: Free-living wanderers with flattened bodies, an adaptation to life in narrow crevices under bark or under rocks. At Ndumo Game Reserve it was sampled from the bark of *Vachellia xanthophloea* (Haddad 2016). Sampled from the Fynbos, Grassland, Nama Karoo, Savanna and Thicket biomes (Haddad et al 2013; Foord et al. 2011).

GLOBAL DISTRIBUTION: Mozambique, Tanzania, Zimbabwe, South Africa.

DISTRIBUTION IN SOUTH AFRICA: **Eastern Cape:** Grahamstown (-33.3, 26.52); Mountain Zebra National Park (-32.24, 25.43); Albany (Resolution Farm) (-33.43, 26.77); Addo Elephant National Park (-33.32, 25.72). **KwaZulu-Natal:** iSimangaliso Wetland Park: Kosi Bay Nature Reserve (-26.93, 32.87); Underberg (-29.79, 29.5); Ndumo Game Reserve (-26.544, 32.155); Ndumo Game Reserve, Fishing ladder (-26.52, 32.18) Pietermaritzburg (-29.6, 30.38). **Western Cape:** Pacaltsdorp (-34.03, 22.46); De Hoop Nature Reserve (-34.45, 20.44).

CONSERVATION MEASURES: There are no significant threats to this species. It is protected in the Mountain Zebra National Park (Dippenaar-Schoeman 2006); Addo Elephant National Park (Dippenaar-Schoeman et al. 2020); Ndumo Game Reserve (Haddad et al. 2006) and De Hoop Nature Reserve (Haddad & Dippenaar-Schoeman 2009).

TAXONOMIC NOTES: Revised by Platnick (1985), known from both sexes. Carapace and mandibles deep blackish brown; legs testaceous; abdomen ashy or creamy white in alcohol, with a broad marginal black band and a median, posteriorly narrowing, black stripe (Pocock 1902).



Genitalia after Platnick (1985)



Epigyne Photo Ruan Booysen



Platyoides leppanae female from Pietermaritzburg
Photo Rudi Steenkamp



Platyoides leppanae female from Ndumo Game Reserve
Photo Charles Haddad

Platyoides pictus Pocock, 1902

COMMON NAME: Grahamstown Scorpion Spider

NATIONAL STATUS: DDT

NATIONAL RATIONALE: A South Africa endemic described by Pocock (1902) from Tea Fountain, Grahamstown. Presently known from two provinces (EOO= 2 529 km²; AOO=16km²; 360-1116 m a.s.l.). The status of the species remains obscure. Some more sampling is needed to collect the male and to determine the species range. Therefore, listed as Data Deficient for taxonomic reasons.

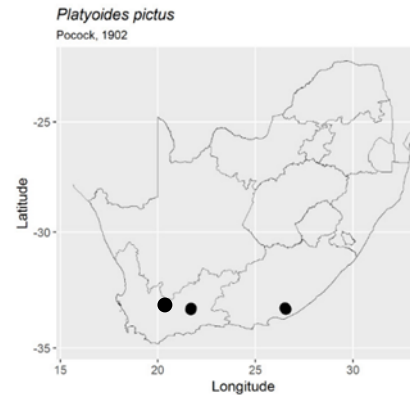
LIFESTYLE: Free-living wanderers with flattened bodies, an adaptation to life in narrow crevices under bark or under rocks. Sampled from the Fynbos and Thicket biomes.

GLOBAL DISTRIBUTION: South Africa.

DISTRIBUTION IN SOUTH AFRICA: **Eastern Cape:** Tea Fountain Grahamstown (-33.3, 26.52) Grahamstown (-33.35, 26.56). **Western Cape:** Swartberg Nature Reserve (Gamkaskloof) (-33.36, 21.69); Gamkaberg Nature Reserve (-33.31, 21.71).

CONSERVATION MEASURES: The threats to this species are not known. Protected in the Swartberg Nature Reserve (Dippenaar-Schoeman et al. 2005) and Gamkaberg Nature Reserve.

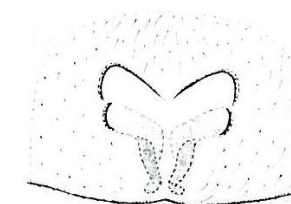
TAXONOMIC NOTES: Revised by Platnick (1985), known only the female. Carapace and mandibles almost coral-red or pale yellow in the young; legs brownish red or yellow; abdomen ashy white in alcohol; the upper side with a broad marginal black band and a median black, anteriorly bifurcating stripe (Pocock 1902).



Platyoides pictus female Photo Les Oates



Platyoides pictus female from Gamkaberg
Photo ASD



Epigyne after Platnick (1985)



Platyoides pirie Platnick, 1985

COMMON NAME: Pirie forest Scorpion Spider

NATIONAL STATUS: LC

NATIONAL RATIONALE: A South African endemic described by Platnick (1985) from Pirie Forest in the Eastern Cape. The species has been sampled from two provinces (EOO=66 207 km²; AOO=12 km²; 7-1488 m a.s.l.). Although only known from one sex, this species has a wide geographic distribution and is therefore listed as Least Concern.

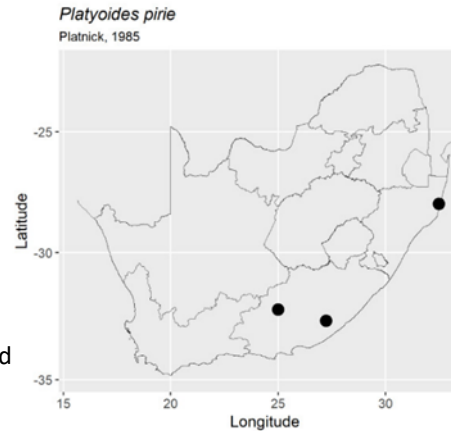
LIFESTYLE: Free-living wanderers with flattened bodies, an adaptation to life in narrow crevices under bark or under rocks. Sampled from the Fynbos, Forest and Savanna biomes (Foord et al. 2021).

GLOBAL DISTRIBUTION: South Africa.

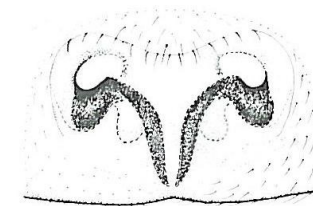
DISTRIBUTION IN SOUTH AFRICA: *Eastern Cape:* Pirie Forest (-32.72, 27.24); Asante Sana Private Game Reserve-Zuurkloof (-32.267,25.004). *KwaZulu-Natal:* iSimangaliso Wetland Park: Hell's Gate (-28, 32.48).

CONSERVATION MEASURES: There are no significant threats to this species. It is protected in the iSimangaliso Wetland Park and Asante Sana Private Game Reserve.

TAXONOMIC NOTES: Known only from the female. Abdominal dorsum light grey with cardiac area slightly darkened (Platnick 1985).



Platyoides pirie female Photo Les Oates



Epigyne after Platnick (1985)

Platyoides pusillus Pocock, 1898

COMMON NAME: Estcourt Scorpion Spider

NATIONAL STATUS: LC

NATIONAL RATIONALE: An African endemic described by Pocock (1898) from Estcourt in KwaZulu-Natal. Presently recorded from three other African countries. From South Africa known from four provinces (EOO=561 996 km²; AOO=44 km²; 47-1821 m a.s.l.). Due to the wide geographical range, the species is therefore listed as Least Concern.

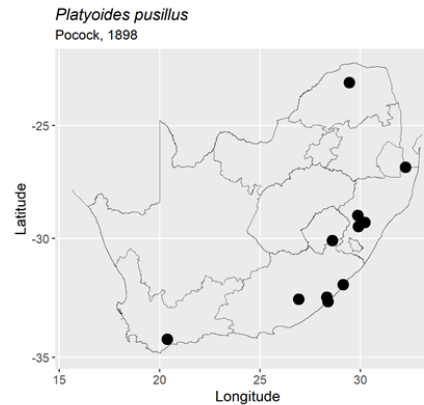
LIFESTYLE: Free-living wanderers with flattened bodies, an adaptation to life in narrow crevices under bark or under rocks. Sampled from the Forest, Grassland, Savanna and Thicket biomes (Haddad et al. 2013; Foord et al. 2011)..

GLOBAL DISTRIBUTION: Tanzania, Zimbabwe, Lesotho, South Africa.

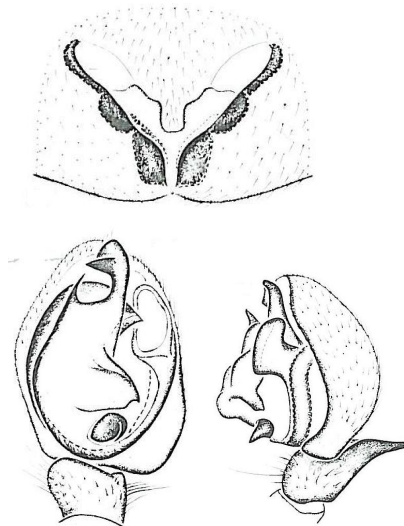
DISTRIBUTION IN SOUTH AFRICA: **Eastern Cape:** Coffee Bay (-31.97, 29.14); Hogsback (-32.59, 26.92), Kei River Mouth (-32.68, 28.37); Kentani (-32.5, 28.32). **KwaZulu-Natal:** Estcourt (-29, 29.87); Karkloof (-29.30, 30.21); Ndumo Game Reserve (-26.87, 32.24); Wakefield Farm near Howick (-29.473, 29.893). **Limpopo:** Lhuvhondo Nature Reserve (-23.038, 29.442). **Western Cape:** De Hoop Nature Reserve, Lekkerwater (-34.25, 20.38).

CONSERVATION MEASURES: There are no significant threats to this species. It is protected in the Ndumo Game Reserve (Haddad et al. 2006), Lhuvhondo Nature Reserve and De Hoop Nature Reserve

TAXONOMIC NOTES: Revised by Platnick (1985), known from both sexes. Integument of carapace deep brown, clothed with olive-black hairs, ornamented on each side with a narrow white stripe separated from the margin by a dark band exceeding it in width; cephalic region with a thin median stripe extending from between the posterior median eyes and a curved white line passing from the tubercles over the anterior median eyes; palpi and legs yellowish brown; abdomen blackish above, clothed with dark olive hairs (Pocock 1902)



Platyoides pusillus female Photo Les Oates



Genitalia after Platnick (1985)

Platyoides quinquedentatus Purcell, 1907

COMMON NAME: Swellendam Scorpion Spider

NATIONAL STATUS: DDT

NATIONAL RATIONALE: A Western Cape endemic described Purcell (1907) from Swellendam. The species has only been sampled from a few localities in the province (EOO=321 km²; AOO=12 km²; 15-266 m a.s.l.). The status of the species remains obscure. Some more sampling is needed to collect the male and to determine the species range. Therefore, listed as Data Deficient for taxonomic reasons.

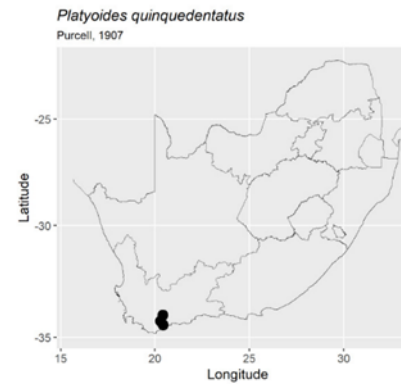
LIFESTYLE: Free-living wanderers with flattened bodies, an adaptation to life in narrow crevices under bark or under rocks. Sampled from the Fynbos biome.

GLOBAL DISTRIBUTION: South Africa.

DISTRIBUTION IN SOUTH AFRICA: *Western Cape:* De Hoop Nature Reserve (-34.45, 20.44); De Hoop Nature Reserve, Koppie Alleen cottage (-34.286, 20.286); Swellendam (-34.02, 20.42).

CONSERVATION MEASURES: The threats to this species are not known. Protected in the De Hoop Nature Reserve (Haddad & Dippenaar-Schoeman 2009).

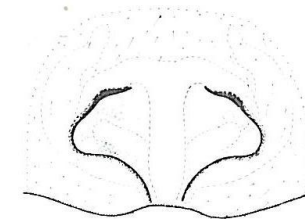
TAXONOMIC NOTES: Revised by Platnick (1985), known from female only. Colour of carapace and chelicera dark mahogany brown; legs similarly coloured or lighter and more yellowish, the anterior pairs more reddish than the posterior ones, all partially infuscated, the femora not paler than the distal segment; abdomen blackened, with a paler, more or less yellowish, longitudinal dorsal stripe on each side above, the ventral surface pale yellowish; sternum reddish yellow.



Platyoides quinquedentatus Photo Les Oates



Platyoides quinquedentatus Photo ASD



Epigyne after Platnick (1985)

Platyoides rossi Platnick, 1985

COMMON NAME: Eastern Cape Scorpion Spider

NATIONAL STATUS: DDT

NATIONAL RATIONALE: An Eastern Cape endemic described by Platnick (1985) from the type locality Kareedouw (EOO=4 km²; AOO=4 km²; 321 m a.s.l.). The status of the species remains obscure. Some more sampling is needed to collect the male and to determine the species range. Therefore listed as Data Deficient for taxonomic reasons.

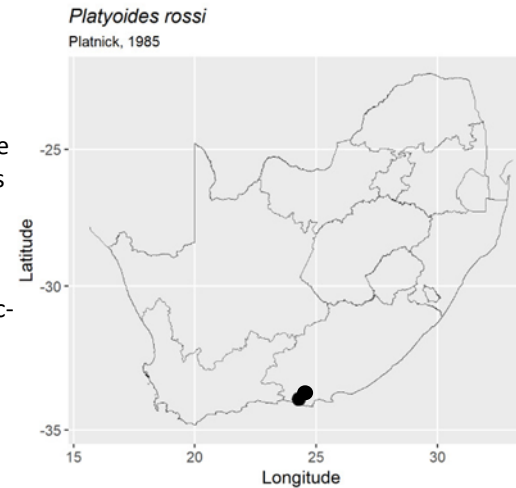
LIFESTYLE: Free-living wanderers with flattened bodies, an adaptation to life in narrow crevices under bark or under rocks. Sampled from the Thicket biome.

GLOBAL DISTRIBUTION: South Africa.

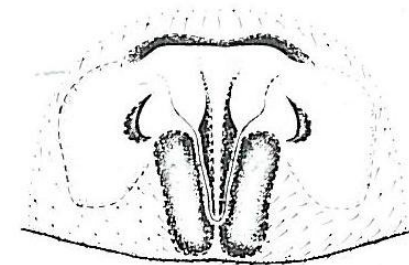
DISTRIBUTION IN SOUTH AFRICA: *Eastern Cape*: Kareedouw (-33.95, 24.29); Joubertina (-33.82, 23.84).

CONSERVATION MEASURES: The threats to this species are not known. Some more sampling is needed to collect the male and to determine the species range.

TAXONOMIC NOTES: Known only from the female. Abdominal dorsum grey with longitudinal paramedian white stripes on posterior three-quarters (Platnick 1985).



Platyoides rossi from Joubertina Photo: Les Oates



Epigyne after Platnick (1985)

Platyoides robertsi Haddad, 2022

COMMON NAME: Robert's Scorpion Spider

NATIONAL STATUS: DDT

NATIONAL RATIONALE: An Northern Cape endemic described by Haddad (2022) from the , Richtersveld National Park). The status of the species remains obscure. Some more sampling is needed to collect the male and to determine the species range. Therefore listed as Data Deficient for taxonomic reasons.

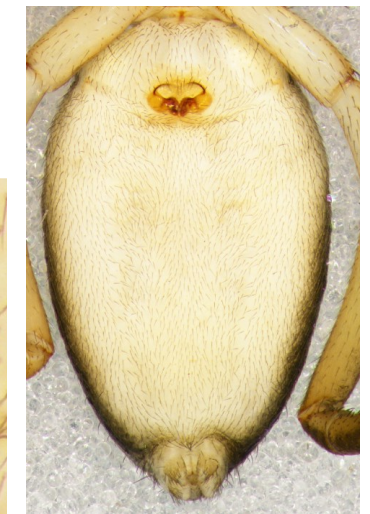
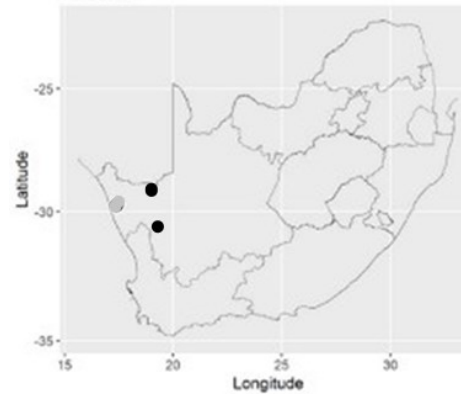
LIFESTYLE: Specimens were collected under rocks on the west-facing slopes of mountains in Succulent Karoo vegetation.

GLOBAL DISTRIBUTION: South Africa.

DISTRIBUTION IN SOUTH AFRICA: Northern Cape, Richtersveld National Park, Akkedis Pass (-28.10577, 17.02.069); Calvinia, Akkerendam Nature Reserve (-31.24.453, 19.46.922),

CONSERVATION MEASURES: Some more sampling is needed to collect the male and to determine the species range.

TAXONOMIC NOTES: Known only from the female.



Habitus and epigyne after Haddad (2022)

Platyoides walteri (Karsch, 1886)

COMMON NAME: Walter's Common Scorpion Spider

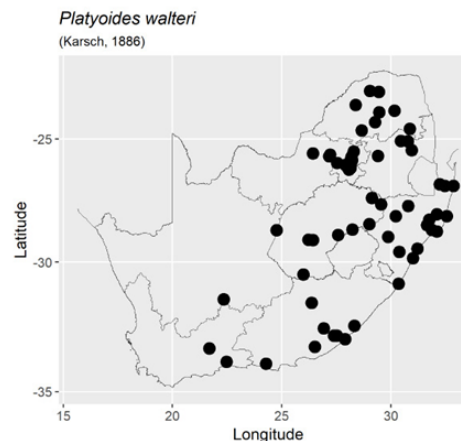
NATIONAL STATUS: LC

NATIONAL RATIONALE: An African endemic described Karsch (1886) as *Hemicloea walteri* from Botsabelo in the Free State. Recorded from four African countries and introduced into Australia. From South Africa known from all the provinces and occurs in more than 10 protected areas (EOO=698 131 km²; AOO=244 km²; 17-1762 m a.s.l.). Due to its wide geographical range, the species is therefore listed as Least Concern.

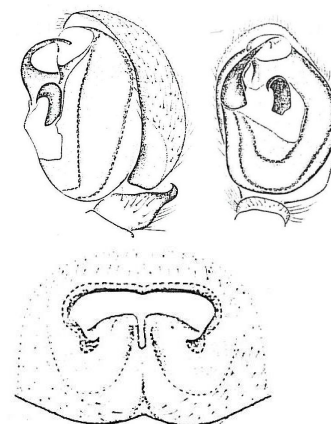
LIFESTYLE: Free-living wanderers with flattened bodies, an adaptation to life in narrow crevices under bark or under rocks. This is the most common species, found on bark but also frequently around houses under potted plants. The species has been sampled from the Forest, Grassland, Nama Karoo, Savanna and Thicket biomes. It has also been sampled from avocado orchards and commercial pine plantations (Dippenaar-Schoeman et al. 2013). At Sabie State Forest *P. walteri* specimens were sampled from pine trees, using paper traps (Van den Berg & Dippenaar-Schoeman 1988).

GLOBAL DISTRIBUTION: Ethiopia, Zimbabwe, Swaziland, South Africa Introduced into Australia.

DISTRIBUTION IN SOUTH AFRICA: **Eastern Cape:** Berlin (-32.88, 27.53); East London (-33.01; 27.9); Grahamstown (-33.3, 26.52); Kareedouw (-33.95, 24.29); Kentani (-32.5, 28.32); King William's Town (-32.88, 27.39); Wilgerskloof Farm, Bamboesberg, W Sterkstroom (-31.6, 26.37); Qulorakwenth (-31.6, 26.37); Kei Mouth (-32.41, 28.22); Hogsback, near Big Tree (-32.36, 26.57); Hogsback, Invaded forest (-32.35, 26.56); Hogback (-32.59, 26.92). **Free State:** Bethulie (-30.49, 25.99); Botshabelo (-29.21, 26.7); Clocolan, Mpetsane Conservation Estate (-28.92, 27.58); Memel (-27.69, 29.56); Sterkfontein Dam Nature Reserve (-28.48, 29.01); Vrede (-27.43, 29.13); Wyndford Guest Farm, Fouriesburg (-28.7, 28.24); Bloemfontein (-29.11, 26.22). **Gauteng:** Centurion (-25.85, 28.16); Germiston (-26.21, 28.15); Irene (-25.87, 28.22); Johannesburg (-26.2, 28.04); Magaliesburg (-25.99, 27.54); Modderfontein (-26.08, 28.17); Pretoria/Tshwane (-25.74, 28.19); Randburg (-26.07, 27.92); Wallmannsthal (-25.52, 28.3); Kliprivierberg Nature Reserve (-26.27, 28.08). **KwaZulu-Natal:** Dundee (-28.16, 30.23); Durban (-29.85, 31.01); Empangeni (-28.72, 31.88); Estcourt (-29, 29.87); Hluhluwe Nature Reserve (-28.09, 32.1); iSimangaliso Wetland Park: Cape Vidal (-28.16, 32.56), Kosi Bay Nature Reserve (-26.93, 32.87); Margate (-30.85, 30.36); Ndumo Game Reserve (-26.87, 32.24); Ophathe Game Reserve (-28.52, 31.66); Pietermaritzburg (-29.6, 30.38);



Platyoides walteri from Outeniqua NR Photo P. Meyer



Genitalia after Platnick (1985)



Platyoides walteri from Irene Photo Peter Webb

Platyoides walteri (continued)

Richards Bay (15 km N) (-28.78, 32.1); Tembe Elephant Park (-26.94, 32.47); Umfolozi Nature Reserve (-28.3, 31.76); Umhlali (-29.47, 31.22); Vryheid Nature Reserve (-27.75, 30.79).

Limpopo: Blouberg Nature Reserve (-22.99, 29.04); Lhuvhodo Nature Reserve (-23.03, 29.45); Marken (-23.59, 28.39); Nylsvley Nature Reserve (-24.65, 28.67); Pietersburg/ Polokwane (-23.89, 29.46); Tzaneen (-23.82, 30.16); Zebediela (-24.31, 29.27). **Mpumalanga:** Bergvliet Forest Station (-25.1, 30.78); Bourke's Luck (-25.09, 30.46); Nelspruit (-25.47, 30.96); Mariepskop (-24.58, 30.87). **North West:** Groot Marico (-25.6, 26.43); Rustenburg (-25.65, 27.22); Rustenburg Nature Reserve (-25.72, 27.18). **Northern Cape:** Kimberley (-28.73, 24.76); Loxton (-31.47, 22.35). **Western Cape:** Outeniqua Nature Reserve (-33.87, 22.48); Swartberg Nature Reserve (-33.36, 21.69).

CONSERVATION MEASURES: There are no significant threats to this species. Protected in more than 10 protected areas.

TAXONOMIC NOTES: Revised by Platnick (1985), known from both sexes. Colour of carapace and chelicera brown; sternum and three basal segments of legs orange-yellow, the sternum with a deep blackish-red border all round, the remaining leg-segments (especially the patellae) and the apex of each femur more or less infuscate; abdomen blackened above, with or without a longitudinal row of more yellowish areas on each side of the median line, the underside paler, yellowish, whitish, or more or less infuscate.



Platyoides walteri from Kemptonpark Photo W. Schmidt

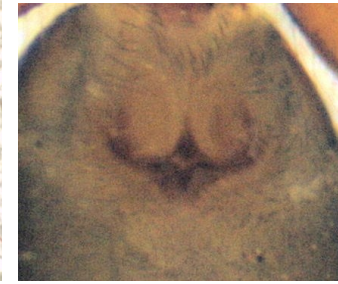


Platyoides walteri from Waterkloof Photo N. Mangels

POSSIBLE NEW SPECIES



Western Soutpansberg Altitudinal 2292
S. Foord



Rustenburg ASD

REFERENCES

- DIPPENAAR-SCHOEMAN A S 2014. *Field Guide of the Spiders of South Africa*. Lapa Publisher, 424 pp.
- DIPPENAAR-SCHOEMAN A S 2006. New records of 43 spider species from the Mountain Zebra National Park, South Africa (Arachnida: Araneae). *Koedoe*, 49: 23–28.
- DIPPENAAR-SCHOEMAN A S, VAN DER WALT A E, DE JAGER M, LE ROUX E, VAN DEN BERG A 2005. The spiders of the Swartberg Nature Reserve in South Africa (Arachnida: Araneae). *Koedoe*, 48: 77–86.
- FOORD S H, DIPPENAAR-SCHOEMAN A S, HADDAD C R 2011. The faunistic diversity of spiders (Arachnida, Araneae) of the Savanna Biome in South Africa. *Transactions of the Royal Society of South Africa*, 66: 170–201.
- DIPPENAAR-SCHOEMAN A S, VAN DEN BERG A M, HADDAD C R, LYLE R 2013. Spiders in South African agroecosystems: a review (Arachnida, Araneae). *Transactions of the Royal Society of South Africa*, 68: 57–74.
- DIPPENAAR-SCHOEMAN A S, VAN DER WALT A E, DE JAGER M, LE ROUX E, VAN DEN BERG A 2005. The spiders of the Swartberg Nature Reserve in South Africa (Arachnida: Araneae). *Koedoe* 48: 77–86.
- DIPPENAAR-SCHOEMAN A S, VAN DEN BERG A, PRENDINI L 2009. A checklist of spiders and scorpions of the Nylsvley Nature Reserve, South Africa. *Koedoe*, 50(1): 1–9.
- HADDAD C R 2016. Diversity and ecology of spider assemblages associated with *Vachellia xanthophloea* bark in a South African reserve (Arachnida: Araneae). *African Entomology* 24: 321–333.
- HADDAD C R, DIPPENAAR-SCHOEMAN A S, FOORD S, LOTZ L N, LYLE R 2013. The faunistic diversity of spiders (Arachnida, Araneae) of the Grassland Biome in South Africa. *Transactions of the Royal Society of South Africa*, 68: 97–122.
- HADDAD C R, DIPPENAAR-SCHOEMAN A S 2015. Diversity of non-acarine arachnids of the Ophathe Game Reserve, South Africa: Testing a rapid sampling protocol. *Koedoe*, 57(1), Art. #1255, 15 pp. <http://dx.doi.org/10.4102/koedoe.v57i1.1255>.
- HADDAD C R, DIPPENAAR-SCHOEMAN A S, WESOLOWSKA W 2006. A checklist of the non-acarine arachnids (Chelicerata: Arachnida) of the Ndumo Game Reserve, Maputoland, South Africa. *Koedoe*, 49: 1–22.
- HADDAD C R 2022. Two new dionychan spiders from arid western South Africa (Araneae: Prodidomidae, Trochanteriidae). *Arachnology* (2022) 19 (Special Issue): 341–347.
- KARSCH F 1887. Über die geographische Verbreitung der Araneiden-gattung Hemicloea Thor. *Berliner Entomologische Zeitschrift*, 30: 151–152.
- LAWRENCE R F 1928. Contributions to a knowledge of the fauna of South-West Africa VII. Arachnida (Part 2). *Annals of the South African Museum*, 25: 217–312.
- LAWRENCE R F 1937. A collection of Arachnida from Zululand. *Annals of the Natal Museum*, 8: 211–273.
- PLATNICK N I 1985. Studies on Malagasy spiders, 2. The family Trochanteriidae (Araneae, Gnaphosoidae), with a revision of the genus *Platyoides*. *American Museum Novitates*, 2808: 1–17.
- POCOCK R I 1898. The Arachnida from the province of Natal, South Africa, contained in the collection of the British Museum. *Annals and Magazine of Natural History*, 2(7): 197–226.
- POCOCK R I 1902. Descriptions of some new species of African Solifugae and Araneae. *Annals and Magazine of Natural History*, 10(7): 6–27.
- PURCELL W F 1907. New South African spiders of the family Drassidae in the collection of the South African Museum. *Annals and Magazine of Natural History*, 20(7): 297–336.
- TUCKER R W E 1923. The Drassidae of South Africa. *Annals of the South African Museum*, 19: 251–437.
- VAN DEN BERG A M, DIPPENAAR-SCHOEMAN A S (1988). Spider communities in a pine plantation at Sabie, eastern Transvaal: a preliminary survey. *Phytophylactica*, 20: 293–296.
- WORLD SPIDER CATALOG 2022. World Spider Catalog. Version 23.0. Natural History Museum Bern, online at <http://wsc.nmbe.ch>, accessed on 3 June 2022 doi: 10.24436/2