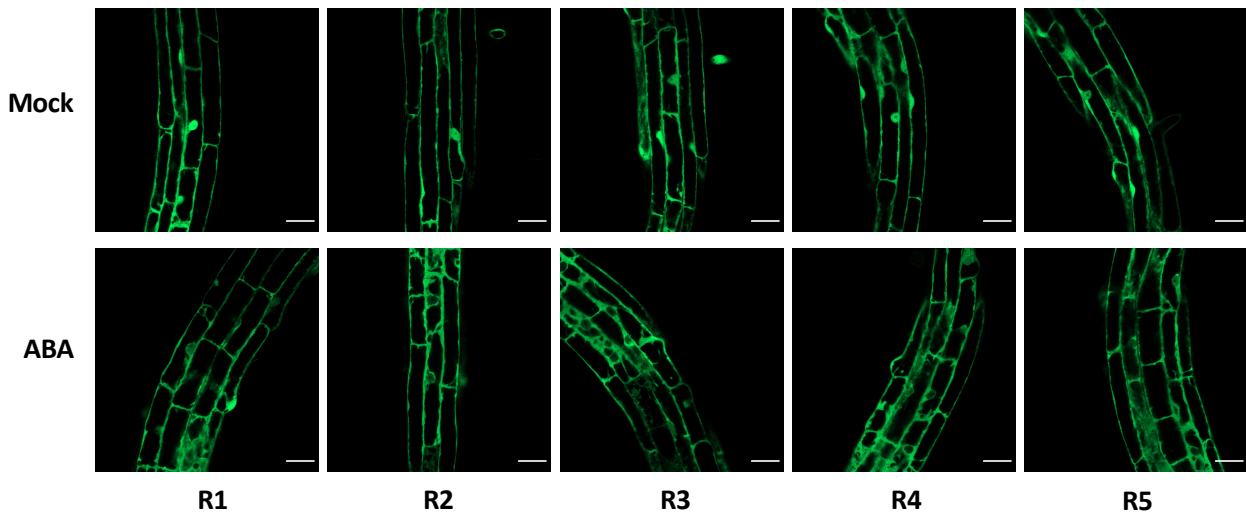
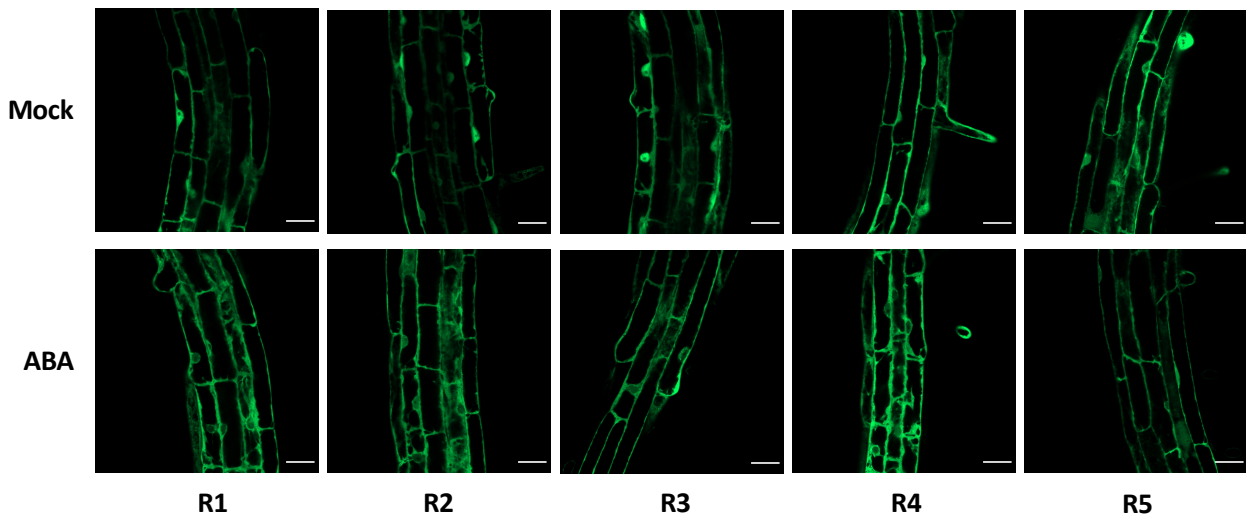


***SnRK1 $\alpha$ 1-GFP#1***



***SnRK1 $\alpha$ 1-GFP#2***



**ABA induces *SnRK1 $\alpha$ 1-GFP* nuclear exit in the differentiation zone of the primary root.** Seedlings of two independent lines (l#1 and #2) expressing *SnRK1 $\alpha$ 1-GFP* were subjected for 3h to mock or ABA (50  $\mu$ M) treatment. Scale bar: 30  $\mu$ m. R1-R5, five representative seedlings subjected to the treatment and immediately imaged.