

Living Lab  
Agroecology and  
Organic Agriculture  
Flanders – BE

LLAEBIO



ALL-READY 1<sup>st</sup> Pilot meeting, 13 – 14 December 2021

# The initiative

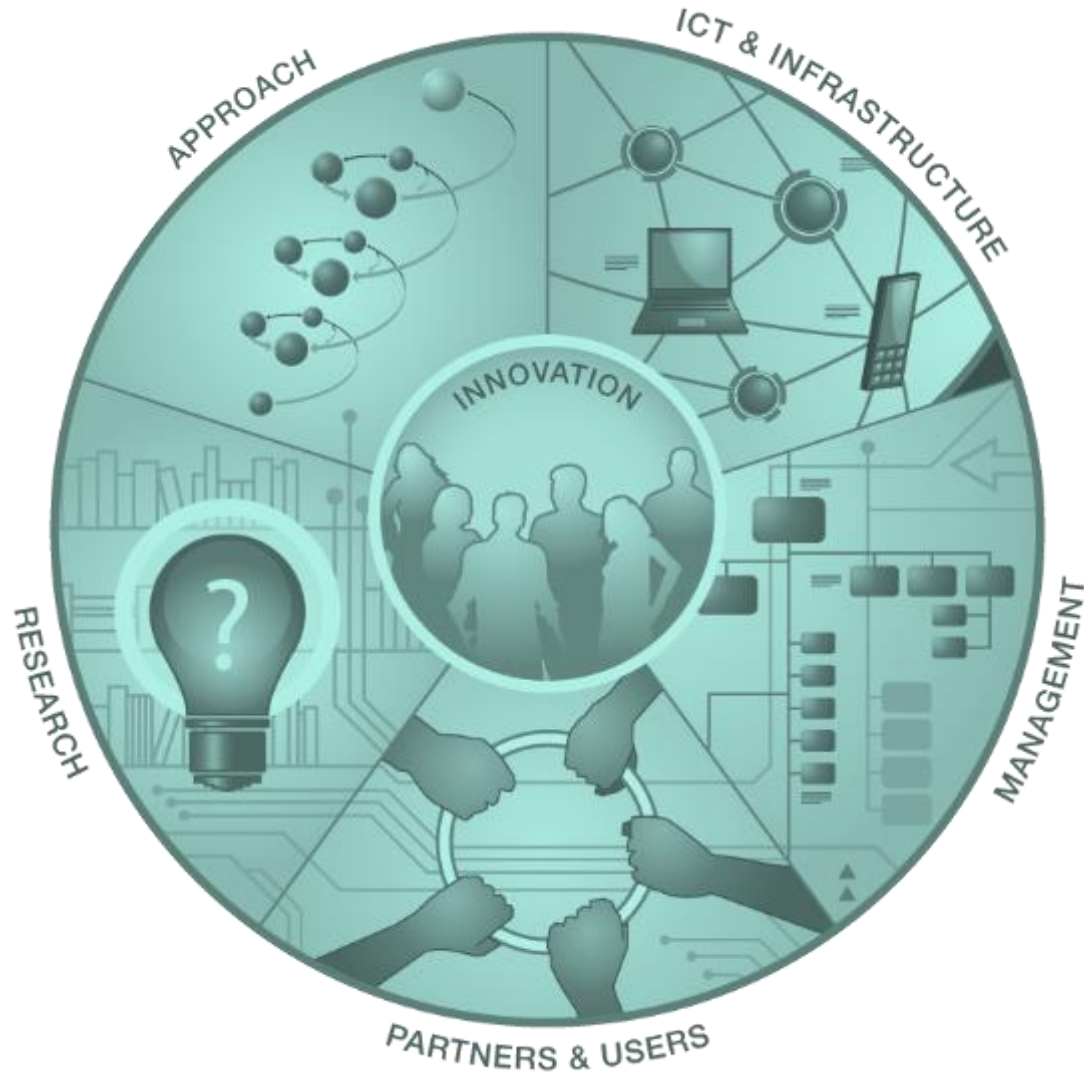


- **The very beginning of the initiative 2017-2018**
  - request from the organic sector for more participatory research
  - more research started from the farmers' needs and carried out with the farmers
  - the Flemish government asked ILVO to set up a living lab on organic farming
  - increasing societal demand to take the concept agroecology as a guiding concept
  - the living lab was broadened to Living lab Agroecology and Organic farming
- **First steps 2019**
  - set up LL in close collaboration with other institutes and relevant actors
  - first real activity with farmers to define future actions end 2019
- **Officially launched in February 2020**



# Living Lab

## ENoLL principles 5 components



# Partners and users



# Partners



*'As a research and extension centre we support growers in sustainable and innovative vegetable culture. In the living lab we share knowledge and get inspired on organic and agro-ecological techniques in other sectors'*



*'Thanks to agro-ecological thinking, we look beyond the optimization of cultivation'.*

**'Healthy agriculture for involved local communities'**



**'Practice-driven research and tailored knowledge exchange are key for development of agro-ecological innovations with farmers'**



*Carmen Landuyt*

**'On farm innovation and technical progress are vital drivers in the transition to a more agro-ecological approach'**



*Dieter Depraetere*

**'Open knowledge exchange in co-creation with (organic) farmers as driver for of an agroecological food and farming system'**



*An Jamart*

*"We believe that system approaches are necessary to address the challenges of our today's food system. Researchers need to take up a new role in society and this living lab will learn us a lot about this."*

*Fleur Marchand*

**ILVO**

**'Increasing biodiversity is a corner stone in modern fruit production and the basis for agro ecology'**



*Renske Petré*



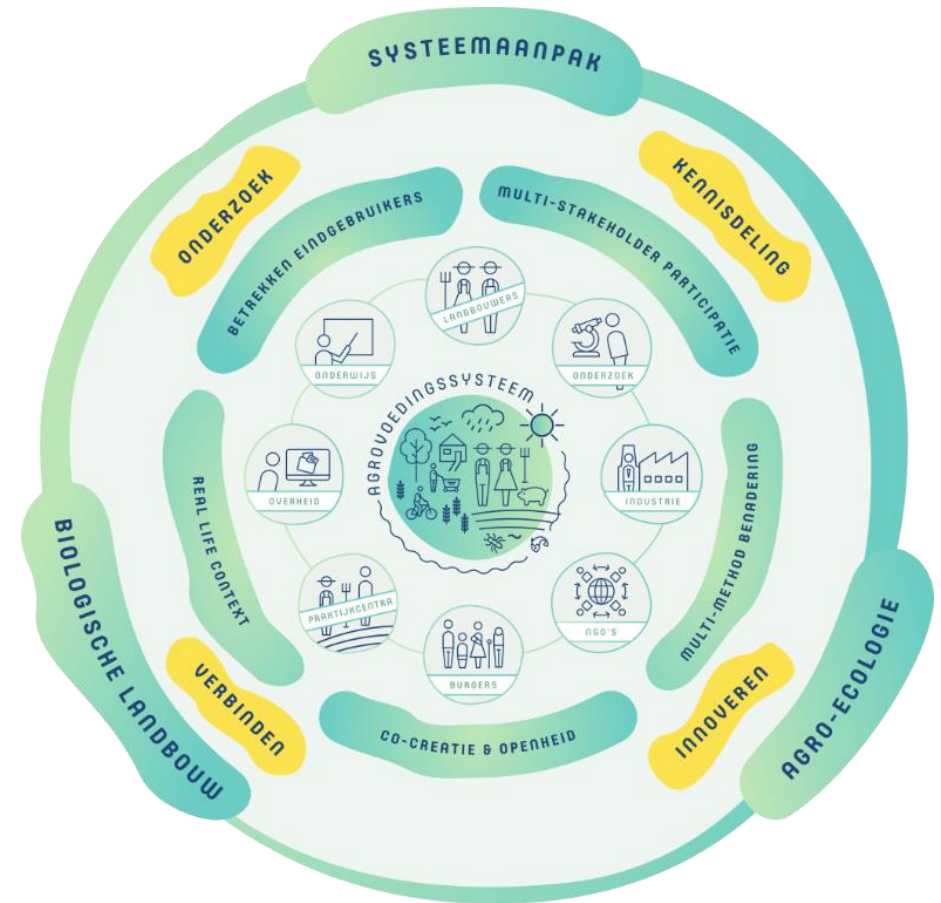
# Vision and mission



**WHY?** We support agroecological innovation as a lever in the **transition from organic and conventional agriculture** to a sustainable food and agricultural ecosystems.

**WHAT?** The living lab brings together partners from the agrifood system and facilitates **innovative research and knowledge sharing** on agroecology and organic agriculture.

To this end, we **connect people, organisations, science and practice**. The LLAEBIO is continuously looking for **partnerships to develop its activities together**.



# Management

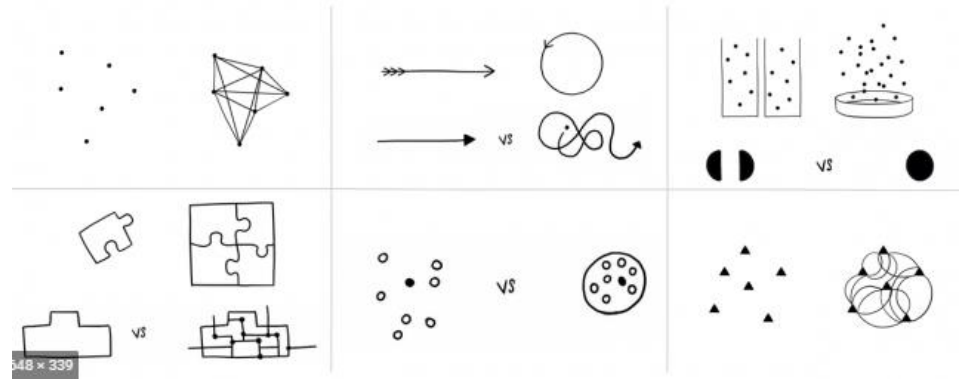


- **Facilitation and coordination of the living lab by ILVO**
  - **coordination:** 1 FTE from the Social Sciences unit
  - **Supported by core team together** with researchers from all ILVO units
- **Coordination through participation:**
  - **Participative and demand driven:**
    - gathering point for ad hoc questions [llaebio@ilvo.vlaanderen.be](mailto:llaebio@ilvo.vlaanderen.be)
    - interactive workshops to determine actions and activities
  - **Working groups:** activities together with stakeholders, variable membership, linked to specific goal, temporary



# Approach

- Guided by 3 elements



+



+



*Nonaka et al. 2000*

## System thinking

## Enoll approach

- co-creation
- active user involvement
- multi-method approach
- multi stakeholder participation
- real life setting

## Integrating practical and scientific knowledge



# Activities

## Knowledge sharing

- Knowledge exchange - connecting people
- Make knowledge and information visible: website, learning networks, ...

## Innovative research:

- Determination of knowledge gaps
- Facilitation of development of project proposal

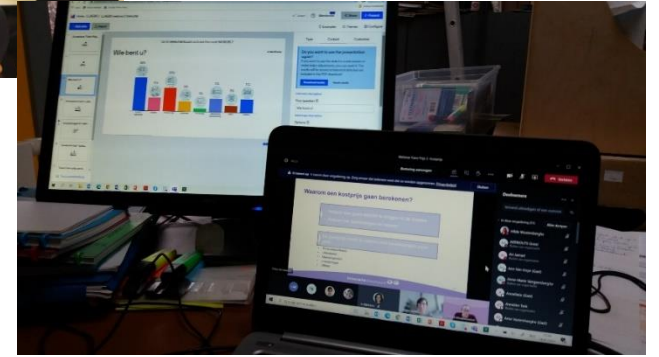


# Some examples: Knowledge sharing and connecting



## Webinar serie: 'fair pricing' :

- Initiated by a specific question of a farmer
- 'Business models', 'cost price calculation', 'market price'
- Exchange theoretical and practical knowledge



## Inspiration seminar '*Laat de bodem voor je werken*'

- Short video's with testimonies of farmers about sustainable soil management on their farm (together with partners of TRANSÆ project)
- Connecting farmers interested in agroecology for a healthier soil and looking for colleagues to network and share knowledge with



Uitnodiging Inspiratiewebinar:

LAAT DE BODEM VOOR JE WERKEN





# Some examples



## Inspiration seminar about agroecology for teachers of secondary agricultural schools



## ‘LLAEBIO draait door’ - event

- Every 3<sup>rd</sup> -4<sup>th</sup> month update about LLAEBIO and exchange of information about projects and activities between partners

## Field day on the Experimental platform for Agroecology – Hansbeke

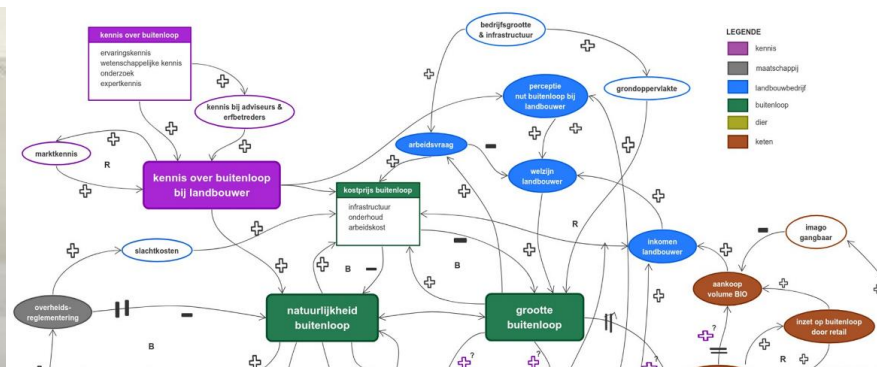
[www.ppaehansbeke.be](http://www.ppaehansbeke.be)

## Demonstration day ‘Composting on the farm’



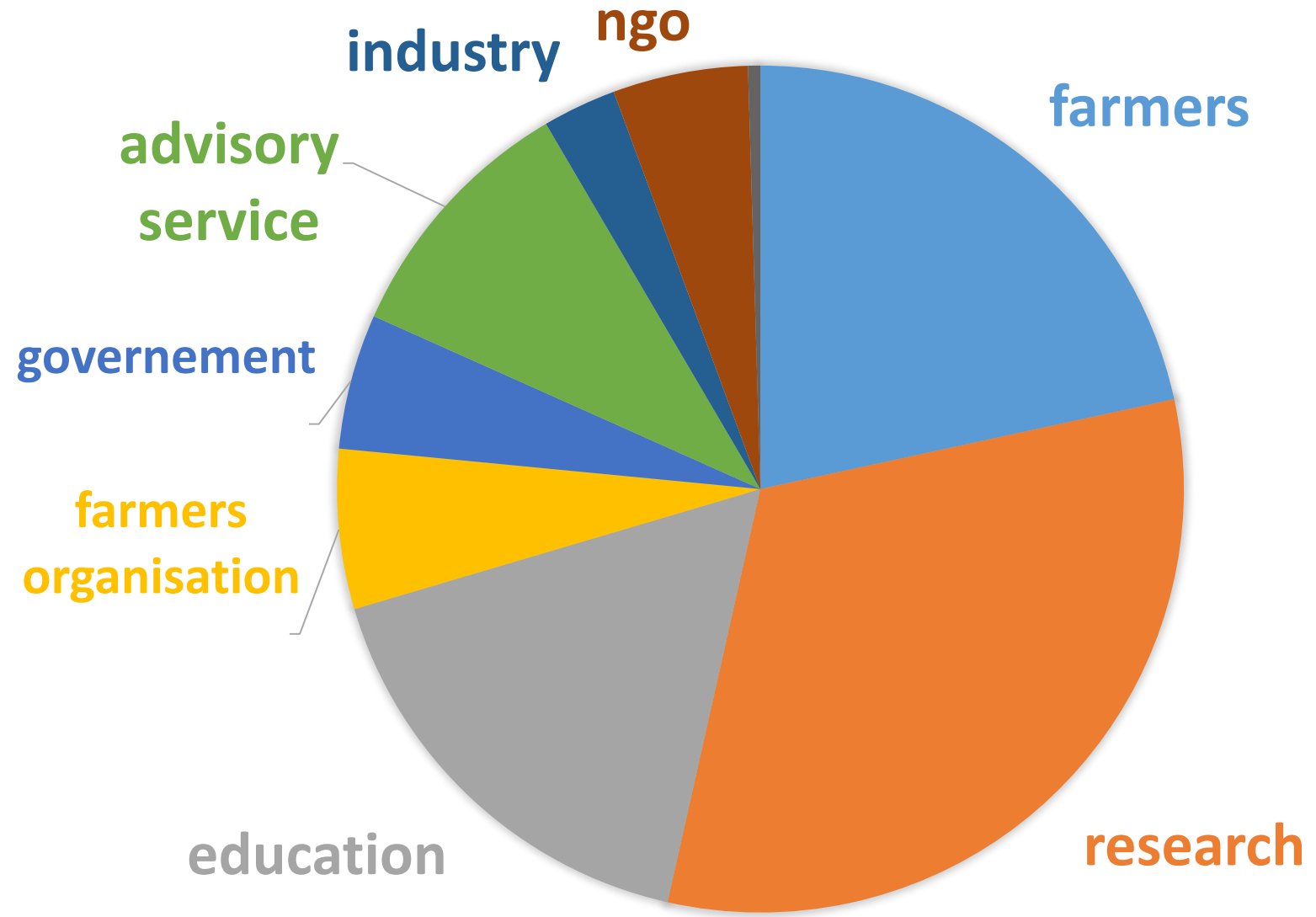
# Some examples: Innovative research

- Organisation of round tables to define research priorities together with the organic sector
- Facilitating and writing of a project proposal
- Learning networks on rotational grazing and other agro ecological practices
- Scientific grounding of the concept agroecology





# Current participation in activities



# Actions for the future

- System thinking
- Communication: to a not polarizing debate, how do you do that?
- Inspired by Flemish pioneers in agroecology and organic farming, a movie
- Expertise in agroecology and organic farming in the picture
- Transition to agroecology: values and norms
- Bundling and sharing information on specific themes
- Agroecology and organic farming in education.



# ICT and infrastructure



**Website:** [www.llaebio.be](http://www.llaebio.be)

**Newsletters and social media of partners**

**Linkedin group:** <https://www.linkedin.com/groups/12393194>

**Farmland for future projects**

both on research sites of participants as on real farms





# Ambitions



- Grow as a living lab to boost co-creation between all actors
- More farmers on board
- More research funded for agroecological and organic research
- Networking on EU level

**Statement of a farmer about how living labs Agroecology can support agriculture**

<https://www.youtube.com/watch?v=Wm6bKTJ5W64&t=14s>





llaebio@ilvo.vlaanderen.be



<https://www.linkedin.com/groups/12393194>



[www.llaebio.be](http://www.llaebio.be)

**ILVO**

Instituut voor Landbouw-, Visserij-,  
en Voedingsonderzoek  
Burg. Van Gansberghelaan 92  
9820 Merelbeke – België  
T + 32 (0)9 272 25 00  
F +32 (0)9 272 25 01

[www.ilvo.vlaanderen.be](http://www.ilvo.vlaanderen.be)