



The Turing Way: Investing in Human Infrastructure for Culture Change

- ❑ Kirstie Whitaker (kwhitaker@turing.ac.uk)
- ❑ Malvika Sharan (msharan@turing.ac.uk)

The Turing Way

An community-led handbook to Data Science and research.

*We involve and support a **diverse community** to make data science **reproducible, ethical, open and collaborative** for everyone.*

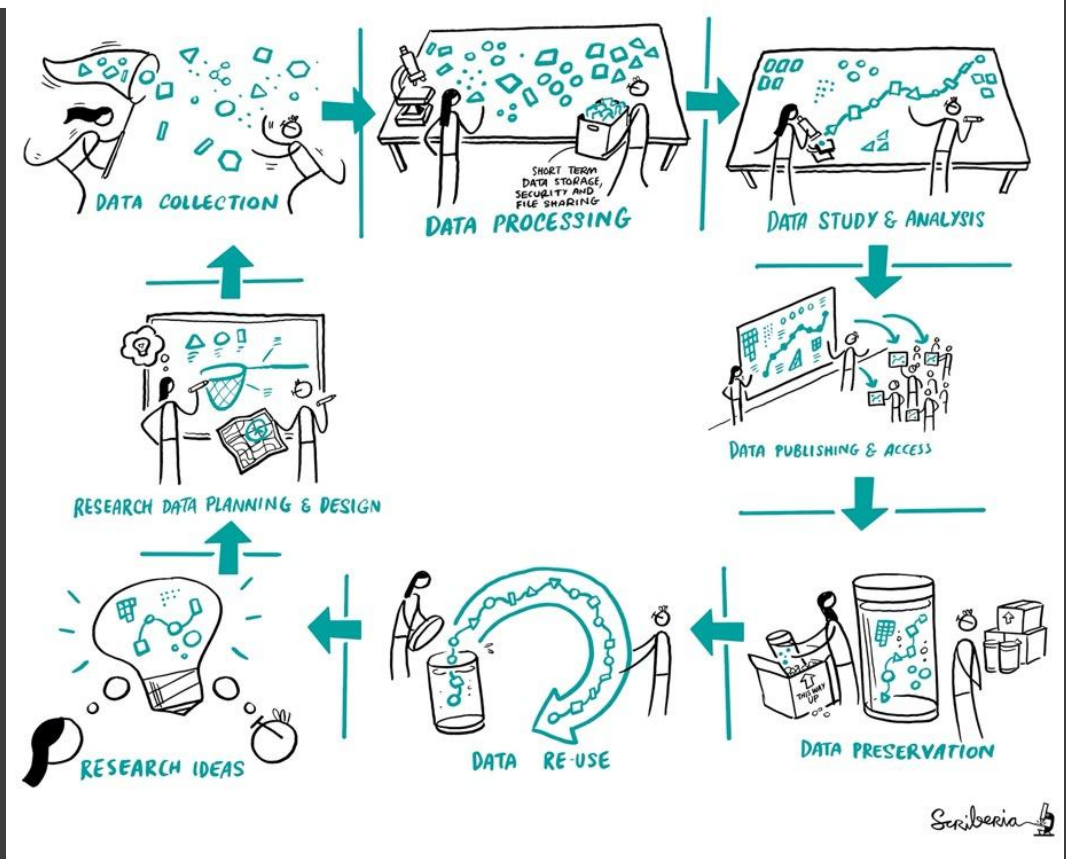


Join our community on twitter: [@turingway](https://twitter.com/turingway), GitHub: <https://github.com/alan-turing-institute/the-turing-way>.

Book: <https://the-turing-way.netlify.app>, Image by The Turing Way community and Scriberia under CC-BY 4.0 License.

Considering reproducibility at all stages of research

		Data	
		Same	Different
Analysis	Same	Reproducible	Replicable
	Different	Robust	Generalisable




Join our community on twitter: [@turingway](https://twitter.com/turingway), GitHub: <https://github.com/alan-turing-institute/the-turing-way>.

Book: <https://the-turing-way.netlify.app>, Image by The Turing Way community and Scriberia under CC-BY 4.0 License

AIUK

Always a 'work in progress'



The Turing Way

🔍 Search this book...

Welcome

- Guide for Reproducible Research
- Guide for Project Design
- Guide for Communication
- Guide for Collaboration
- Guide for Ethical Research
- Community Handbook
- Afterword

Visit our [GitHub Repository](#)
This book is powered by [Jupyter Book](#)

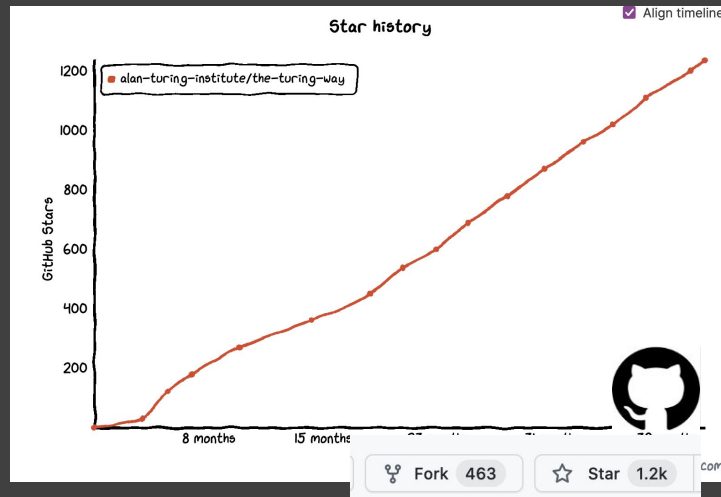


Join our community on twitter: [@turingway](#), GitHub: <https://github.com/alan-turing-institute/the-turing-way>.

Book: <https://the-turing-way.netlify.app>, Image by The Turing Way community and Scriberia under CC-BY 4.0 License

Notable impacts

- An Emerging Technology Charter by [Mayor of London \(policy\)](#)
- Reproducibility of scientific results in the [EU 2020 \(report\)](#)
- Innovation Scholars: [UKRI grant 2020 \(funding call\)](#)
- Replicated by >8 projects including by the [Office for National Statistics](#)
- CodeRefinery and Library Carpentries [training materials](#)
- Cited by [20+ peer-reviewed articles](#) & >100 online publications



3 years, 5 Guides, 260 live pages

all contributors 322

Subscribers:

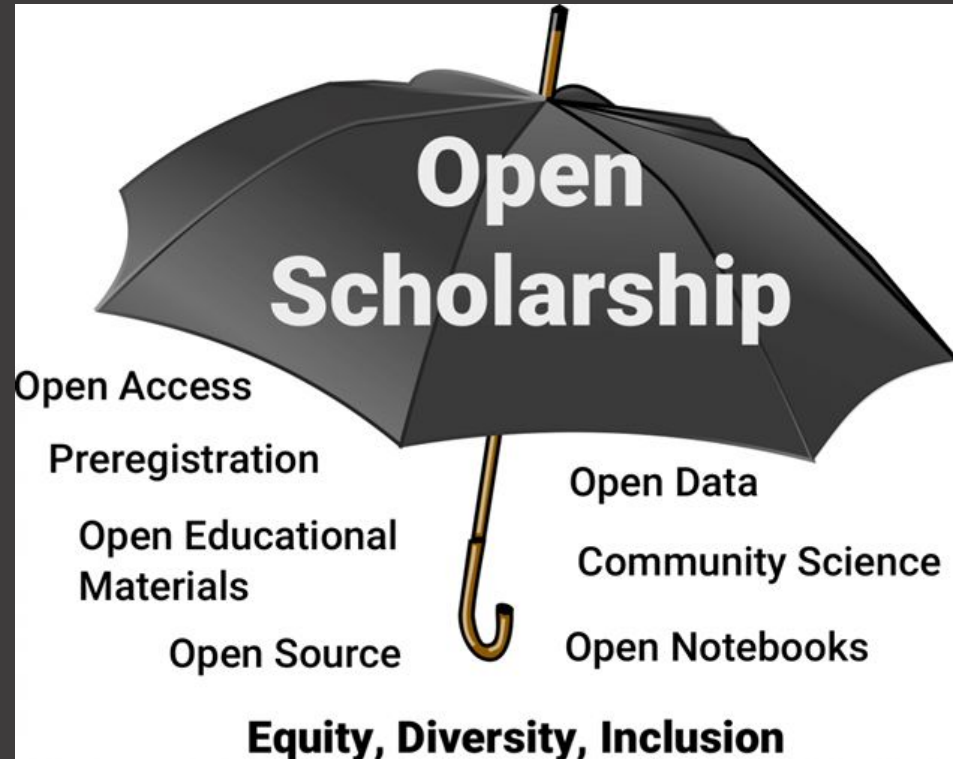
340 on Slack, 580 on newsletters,
2688 on Twitter, 1000s of visitors

Join our community on twitter: [@turingway](#), GitHub: <https://github.com/alan-turing-institute/the-turing-way>.

Book: <https://the-turing-way.netlify.app>, Image by The Turing Way community and Scriberia under CC-BY 4.0 License

“Open” for the purpose of improved equity

- There are many different definitions of “open”.
- All these practices should be with a goal of furthering equity, diversity and inclusion.



Investing in human infrastructure for culture change

Coordinating the people of collaborative data science projects is - often - one of the biggest blockers in addressing large scale, ambitious research questions.

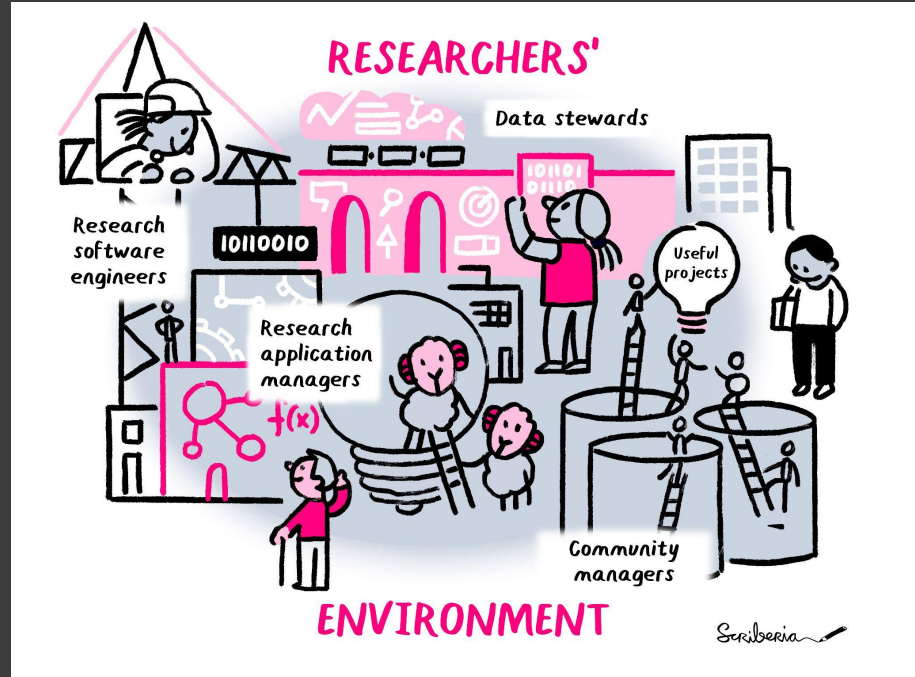


Join our community on twitter: [@turingway](https://twitter.com/turingway), GitHub: <https://github.com/alan-turing-institute/the-turing-way>.

Book: <https://the-turing-way.netlify.app>, Image by The Turing Way community and Scriberia under CC-BY 4.0 License

Providing career pathways for culture change

- Data Stewards
- Research Software Engineers
- Community Managers
- Research Application Managers (RAMs)



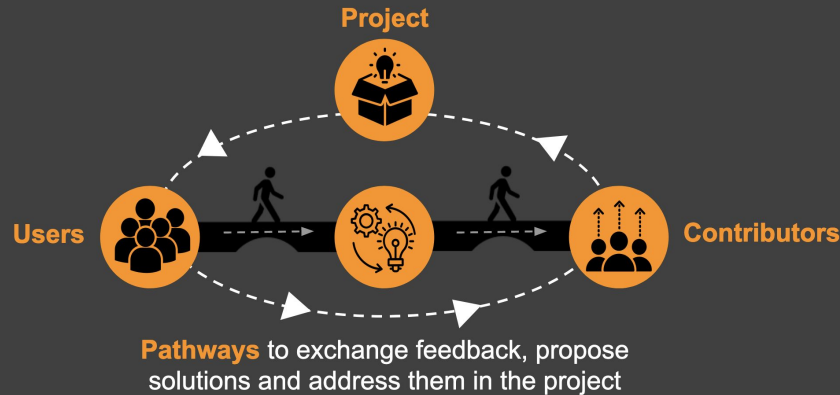
Join our community on twitter ([@turingway](https://twitter.com/turingway)), GitHub (<https://github.com/alan-turing-institute/the-turing-way>) and at a Collaboration Cafe: <https://the-turing-way.netlify.app/community-handbook/coworking/coworking-collabcafe.html>
Book: <https://the-turing-way.netlify.app>, Image by The Turing Way community and Scriberia under CC-BY 4.0 License

Institutional backing for sustainability & adoption

Home + Research + Research programmes

Tools, practices and systems

Building open source infrastructure to empower a global, decentralised network of people who connect data with domain experts



Community Handbook ^

Code of Conduct v

Style Guide v

Maintaining Consistency v

Contributing and v

Developing Chapters -
Templates and Workflow

Acknowledging Contributors v

Monthly Newsletters v

Book Dash Events v

Community Coworking Calls v

Template Collection v

Reflect & Share

How do you or could you use, promote or contribute to
The Turing Way in your local contexts?

Tools, Practices and Systems

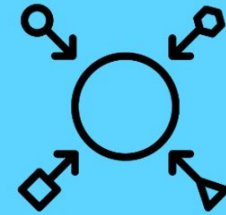
- Trustworthy systems (DSH)
- Transparent reporting
- Inclusive interoperable design (TW)
- Ethical integrity
- Respectful co-creation
- Leadership in open research



Trust



Transparency



Inclusivity



Integrity



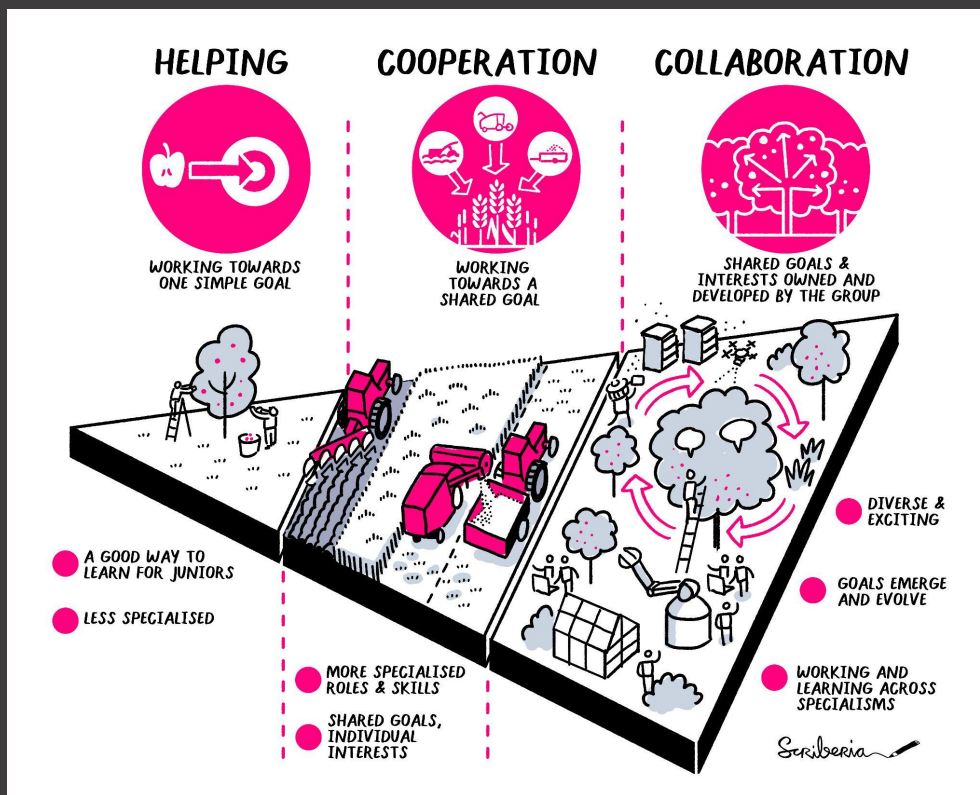
Respect



Leadership

Researchers' Journey in Open

From users → contributors → collaborators



Join our community on twitter ([@turingway](https://twitter.com/turingway)), GitHub (<https://github.com/alan-turing-institute/the-turing-way>), Book: <https://the-turing-way.netlify.app>, Image by The Turing Way community and Scriberia under CC-BY 4.0 License



Book:
the-turing-way.netlify.app

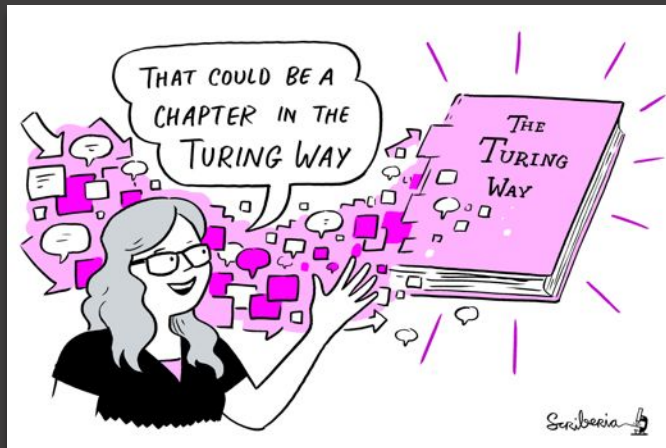
GitHub:
github.com/alan-turing-institute/the-turing-way

Twitter:
twitter.com/turingway

Email:
theturingway@gmail.com

CC-BY 4.0, *The Turing Way*

A Book with Five guides



A Community



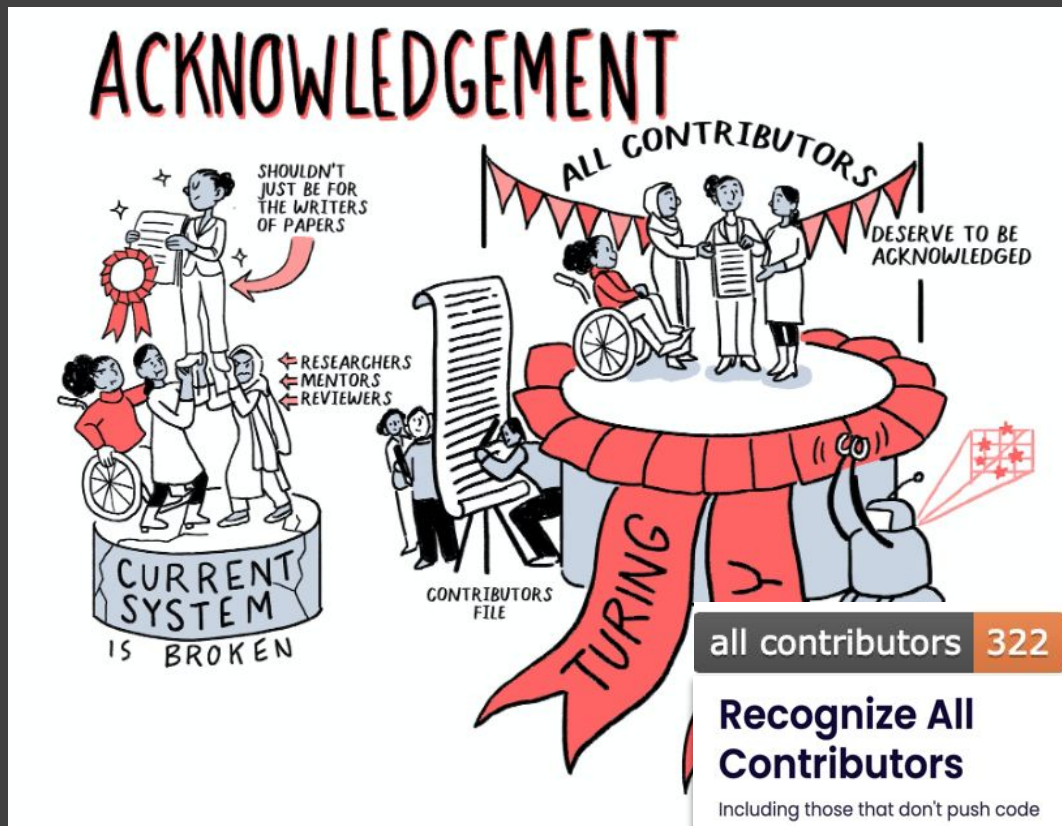
An Open Source Project



A Culture of Collaboration



Governance & Recognition



Record of Contributions

Personal Highlights from *The Turing Way* Contributors

Kirstie Whitaker

A

B

C

E

Collaborating Organisations and Projects

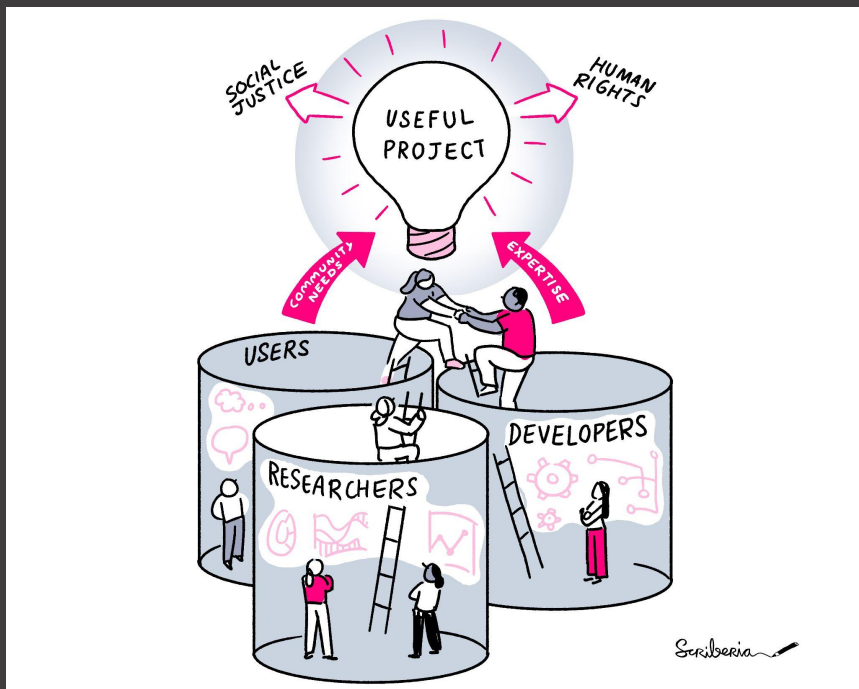
Delft University of
Technology - Faculty of
Applied Sciences
Netherlands eScience
Center
FAIR Cookbook
Open Life Science

Cite as: *The Turing Way Community*.
(2021). *The Turing Way: A handbook for
reproducible, ethical and collaborative
research (1.0.1)*. Zenodo.
<https://doi.org/10.5281/zenodo.5671094>

Discussion

- Looking forwards: In what direction should we take *The Turing Way*?
- What investments should our stakeholders make to ensure the long term sustainability of *The Turing Way* project and its community?

Join us investing in human infrastructure



Emergent Roles in Research Infrastructure & Technology

25 March 2022

17:00 – 18:30 UTC



[Register on Eventbrite](#)



Noor Shaker
BVP and general manager,
X-Chem



Esther Plomp
Data Steward,
Delft University of Technology



Bo Billi-Hamelin
Co-Director,
Open Post Academics



Beth Duckles
Co-Director,
Open Post Academics



Arielle Bennett
Programme Manager, Tools,
Practices & Systems, The
Alan Turing Institute

Fireside Chat Series

The March 2022 event is being co-hosted with Open Post Academics. Fireside Chat series features people, ideas & projects in open and reproducible research.

Fireside chat series features people, projects and communities in open and reproducible research.

Friday - 25 March, bit.ly/turingway



Join our community on twitter ([@turingway](https://twitter.com/turingway)), GitHub (<https://github.com/alan-turing-institute/the-turing-way>), Book: <https://the-turing-way.netlify.app>, Image by The Turing Way community and Scriberia under CC-BY 4.0 License

Contact:

Kirstie Whitaker (@kirstie_j), Malvika Sharan (@malvikasharan)

Email: theturingway@gmail.com

Slides: <https://doi.org/10.5281/zenodo.6378011>

Useful links:

- Book: the-turing-way.netlify.com
- Twitter: twitter.com/turingway
- Newsletter: tinyletter.com/TuringWay
- GitHub: github.com/alan-turing-institute/the-turing-way
- Slack: <https://tinyurl.com/jointuringwayslack>
- Artwork by Scriberia: <https://doi.org/10.5281/zenodo.3332808>

The Alan Turing Institute

