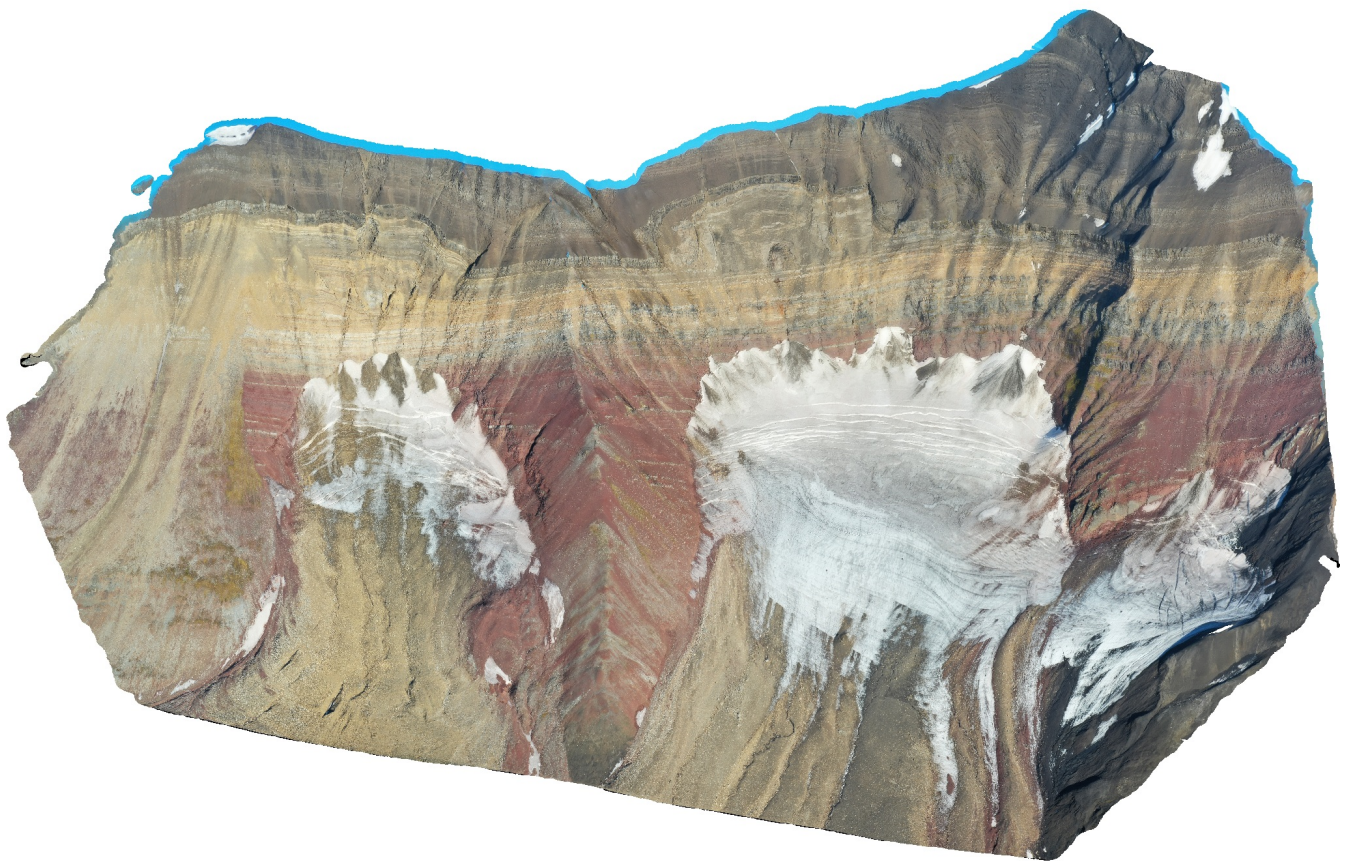


Processing report - Burgerbukta east

Processing Report
24 February 2022



Survey Data

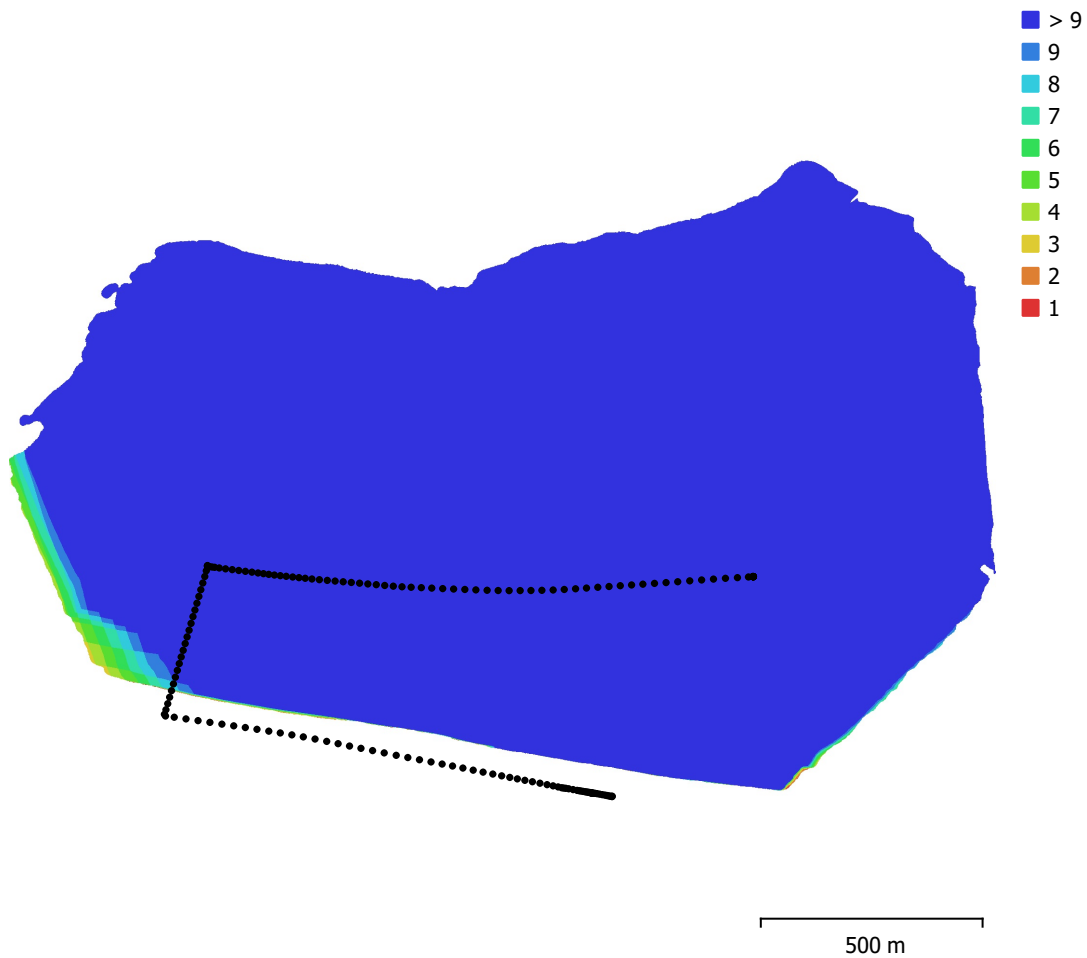


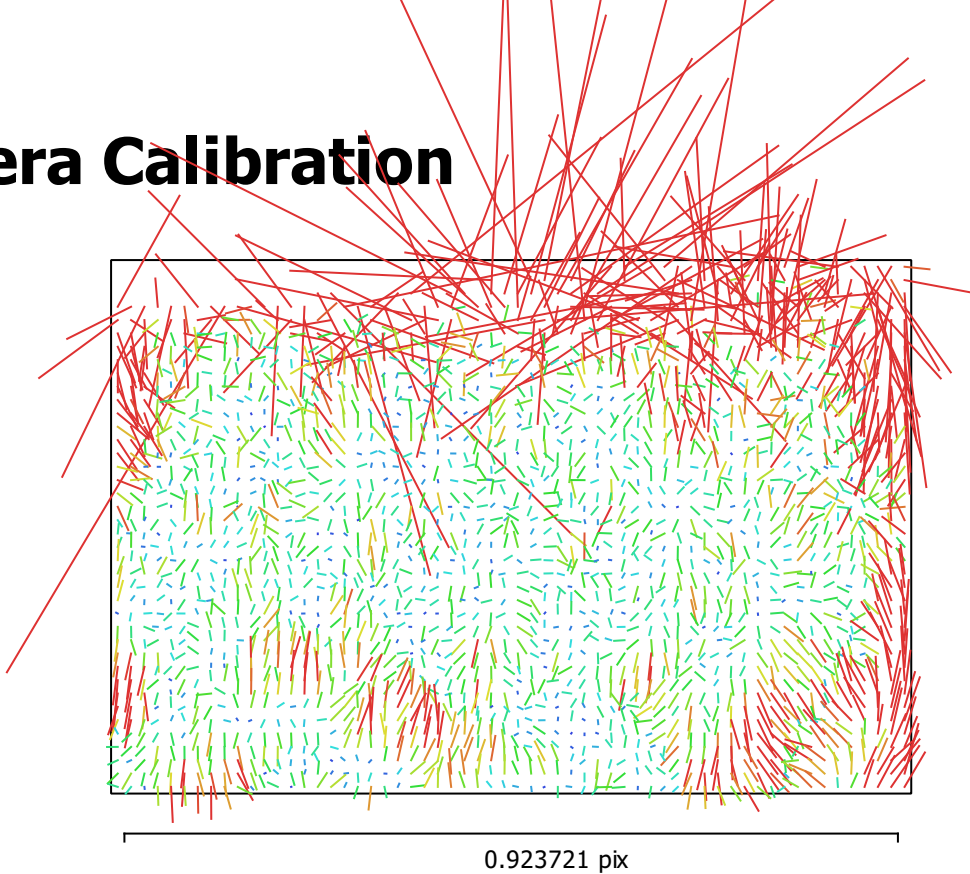
Fig. 1. Camera locations and image overlap.

Number of images:	170	Camera stations:	170
Flying altitude:	597 m	Tie points:	371,210
Ground resolution:	17.2 cm/pix	Projections:	1,390,979
Coverage area:	2.27 km ²	Reprojection error:	0.176 pix

Camera Model	Resolution	Focal Length	Pixel Size	Precalibrated
L1D-20c (10.26mm)	5472 x 3648	10.26 mm	2.41 x 2.41 μ m	No

Table 1. Cameras.

Camera Calibration



0.923721 pix
Fig. 2. Image residuals for L1D-20c (10.26mm).

L1D-20c (10.26mm)

170 images

Type	Resolution	Focal Length	Pixel Size
Frame	5472 x 3648	10.26 mm	2.41 x 2.41 μm

	Value	Error	F	Cx	Cy	K1	K2	K3	P1	P2
F	4332.9	0.049	1.00	0.06	-0.17	0.14	0.01	-0.04	-0.01	-0.29
Cx	23.3569	0.093		1.00	-0.06	0.03	0.01	0.01	0.91	-0.02
Cy	-42.8271	0.083			1.00	-0.11	0.05	-0.06	-0.05	0.44
K1	-0.000612795	1.8e-05				1.00	-0.92	0.85	0.04	-0.23
K2	0.016062	6e-05					1.00	-0.98	-0.00	0.03
K3	-0.0227086	6.7e-05						1.00	0.01	-0.02
P1	0.00164775	6.9e-06							1.00	-0.05
P2	-0.00268998	2.7e-06								1.00

Table 2. Calibration coefficients and correlation matrix.

Camera Locations

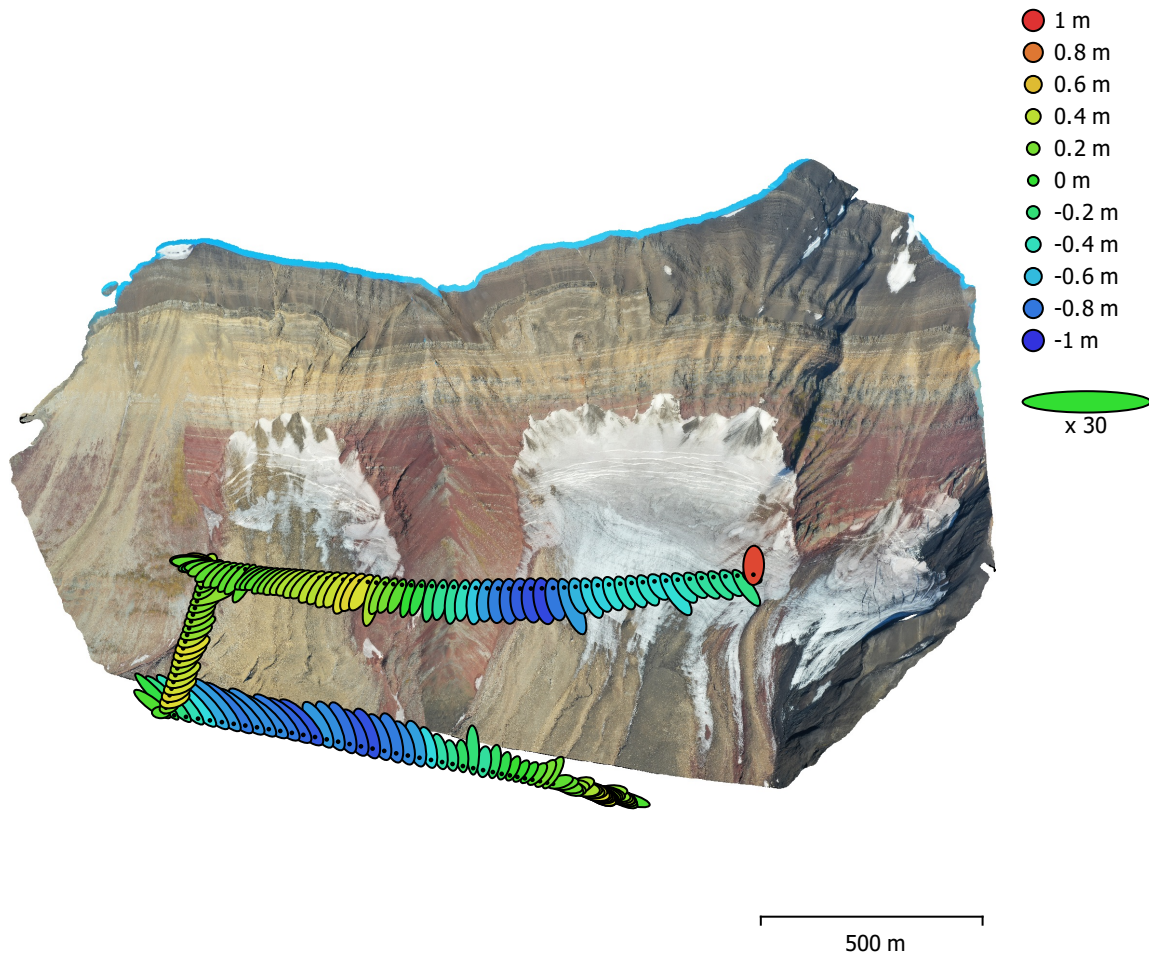


Fig. 3. Camera locations and error estimates.

Z error is represented by ellipse color. X,Y errors are represented by ellipse shape.

Estimated camera locations are marked with a black dot.

X error (m)	Y error (m)	Z error (m)	XY error (m)	Total error (m)
1.24664	1.42075	0.440966	1.89014	1.9409

Table 3. Average camera location error.

X - Longitude, Y - Latitude, Z - Altitude.

Digital Elevation Model

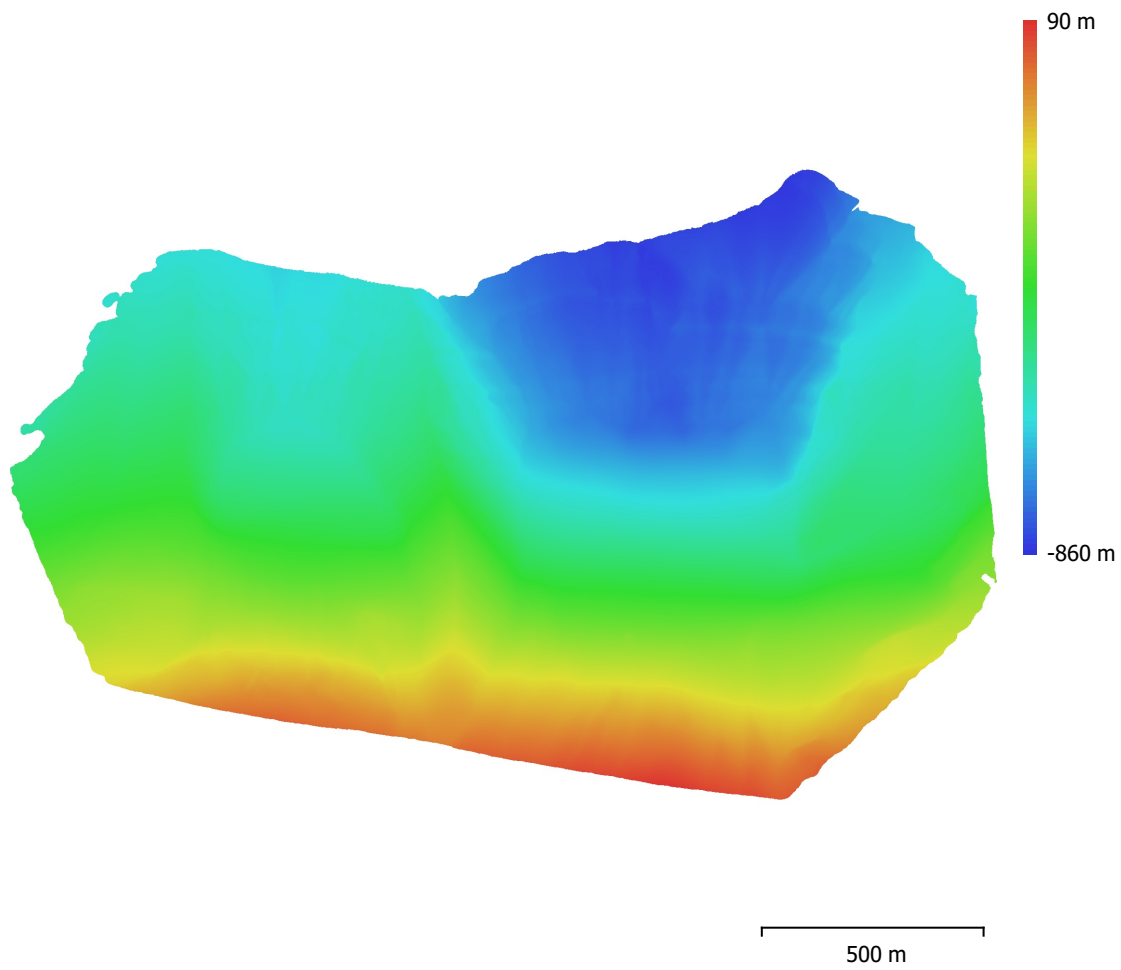


Fig. 4. Reconstructed digital elevation model.

Resolution: 34.3 cm/pix
Point density: 8.49 points/m²

Processing Parameters

General

Cameras	170
Aligned cameras	170
Coordinate system	WGS 84 (EPSG::4326)
Rotation angles	Yaw, Pitch, Roll

Point Cloud

Points	371,210 of 795,326
RMS reprojection error	0.124222 (0.176185 pix)
Max reprojection error	0.374886 (2.78574 pix)
Mean key point size	1.42887 pix
Point colors	3 bands, uint8
Key points	No
Average tie point multiplicity	4.70832

Alignment parameters

Accuracy	Highest
Generic preselection	Yes
Reference preselection	No
Key point limit	60,000
Tie point limit	0
Filter points by mask	No
Mask tie points	No
Exclude stationary tie points	Yes
Guided image matching	No
Adaptive camera model fitting	No
Matching time	8 minutes 56 seconds
Matching memory usage	513.82 MB
Alignment time	9 minutes 12 seconds
Alignment memory usage	347.89 MB

Optimization parameters

Parameters	f, cx, cy, k1-k3, p1, p2
Adaptive camera model fitting	No
Optimization time	7 seconds
Software version	1.7.1.11797
File size	96.48 MB

Depth Maps

Count	170
-------	-----

Depth maps generation parameters

Quality	High
Filtering mode	Mild
Processing time	38 minutes 22 seconds
Memory usage	7.02 GB
Software version	1.7.1.11797
File size	980.36 MB

Dense Point Cloud

Points	28,047,213
Point colors	3 bands, uint8

Depth maps generation parameters

Quality	High
Filtering mode	Mild
Processing time	38 minutes 22 seconds

Memory usage	7.02 GB
Dense cloud generation parameters	
Processing time	19 hours 29 minutes
Memory usage	9.76 GB
Software version	1.7.1.11797
File size	431.91 MB
Model	
Faces	1,845,711
Vertices	925,926
Vertex colors	3 bands, uint8
Texture	4,096 x 4,096 x 10, 4 bands, uint8
Depth maps generation parameters	
Quality	High
Filtering mode	Mild
Processing time	38 minutes 22 seconds
Memory usage	7.02 GB
Reconstruction parameters	
Surface type	Arbitrary
Source data	Dense cloud
Interpolation	Enabled
Strict volumetric masks	No
Processing time	14 minutes 54 seconds
Memory usage	14.29 GB
Texturing parameters	
Mapping mode	Generic
Blending mode	Mosaic
Texture size	4,096
Enable hole filling	Yes
Enable ghosting filter	Yes
UV mapping time	4 minutes 20 seconds
UV mapping memory usage	3.73 GB
Blending time	2 minutes 32 seconds
Blending memory usage	4.77 GB
Software version	1.7.1.11797
File size	276.33 MB
Tiled Model	
Texture	3 bands, uint8
Depth maps generation parameters	
Quality	High
Filtering mode	Mild
Processing time	38 minutes 22 seconds
Memory usage	7.02 GB
Reconstruction parameters	
Source data	Dense cloud
Tile size	256
Face count	Medium
Enable ghosting filter	No
Processing time	23 minutes 21 seconds
Memory usage	1.61 GB
Software version	1.7.1.11797
File size	152.34 MB
System	
Software name	Agisoft Metashape Professional
Software version	1.7.1 build 11797
OS	Windows 64 bit
RAM	31.81 GB

CPU
GPU(s)

Intel(R) Core(TM) i7-9850H CPU @ 2.60GHz
Quadro RTX 3000