



university of
 groningen



Frigga Kruse

Human Impact at Advent City (RiS ID 10516)

August 5 – August 16, 2016

History in Photographs I: site formation processes



First ropeway constructed at Advent City in 1903. (Photo in Hoel 1966: 557)

Kruse, F. 2016. Human Impact at Advent City (RiS ID 10516). History in Photographs I: site formation processes. [Unpublished report.] Groningen: University of Groningen, Arctic Centre.

About this report

The aim of this report is to outline the presently known evidence for **the site formation processes** at Advent City from the initial development of the mining settlement via its operations and abandonment to the removal of all houses, plant, machinery, stores, etc. The period in question is 1901 till 1917.

Sources

The following sources have been consulted:

Askeladden, www.riksantikvaren.no

Dole, N. 1922. America in Spitsbergen. The romance of an Arctic coal mine. Vol. 2 Boston: Marshall-Jones Company.

Hartnell, C.C. 2009. Arctic network builders. [Unpublished PhD thesis.] Michigan: Michigan Technological University.

Hoel, A. 1966. Svalbard. Svalbards historie 1596-1965. Vol. 2. Oslo: Sverre Kildahls Boktrykkeri.

Johannessen, L.J. 1997. Hiorthhamn. Coal mining under difficult conditions. Longyearbyen: Governor of Svalbard.

Kinck, J. www.kinck.no

Kruse, F. 2013. British mining, exploration, and geopolitics on Spitsbergen, 1904-53. Groningen: Barkhuis.

Kruse, F. 2014. Historical archaeology of Advent City and Hiorthhamn (Isfjorden, Spitsbergen). Final report. [Unpublished report.] Groningen: University of Groningen: Arctic Centre.

Kruse, F. 2016. Human impact at Advent City (RiS ID 10156). Post-excavation assessment report. [Unpublished report.] Groningen: University of Groningen, Arctic Centre.

Michigan Technical University. Keweenaw Digital Archives.

Norsk Folkemuseum. Fotosamlingen. Anders Beer Wilse.

Norwegian Polar Institute. Photo Library.

Oglethorpe, M. Private collection.

The different archaeological features at Advent City are identified in two ways: firstly by the reference number given in Kruse 2013 (see map p. 18) and secondly by the reference number given in Norway's Askeladden database.

Summer 1901

SHED for tools and explosives (Hoel 1966: 554)

no proof

(unless it is the small square pit at the beach? Kruse –, Askeladden 93035-29)

Summer 1903

SIMPLE MESS, partly of sail (Hoel 1966: 555)

no proof

(unless it is the small wooden frame at the beach? Kruse –, Askeladden 93035-30)

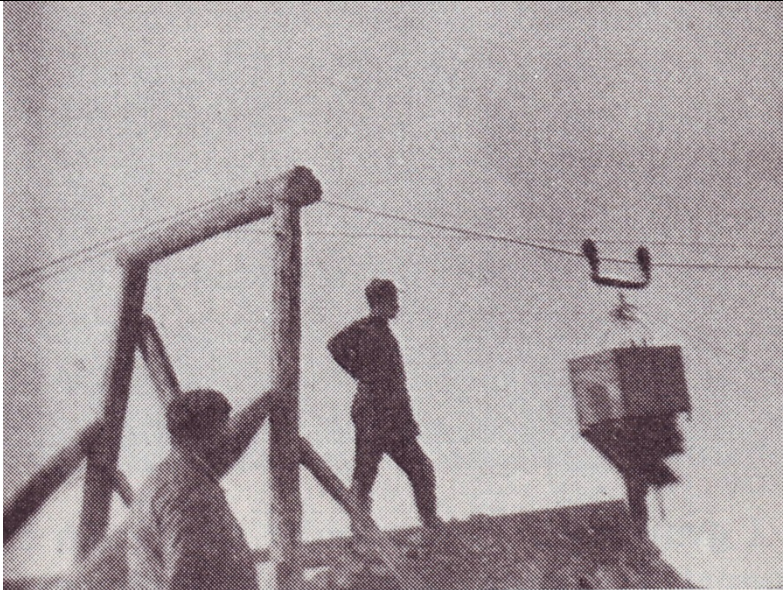


Photo probably S.A. Fangen, in Hoel 1966: 557

Summer 1903

SIMPLE ROPEWAY

(Hoel 1966: 555)

no proof

(unless the ropeway towers were re-used for double ropeway: Kruse 2a, Askeladden 93035-5)

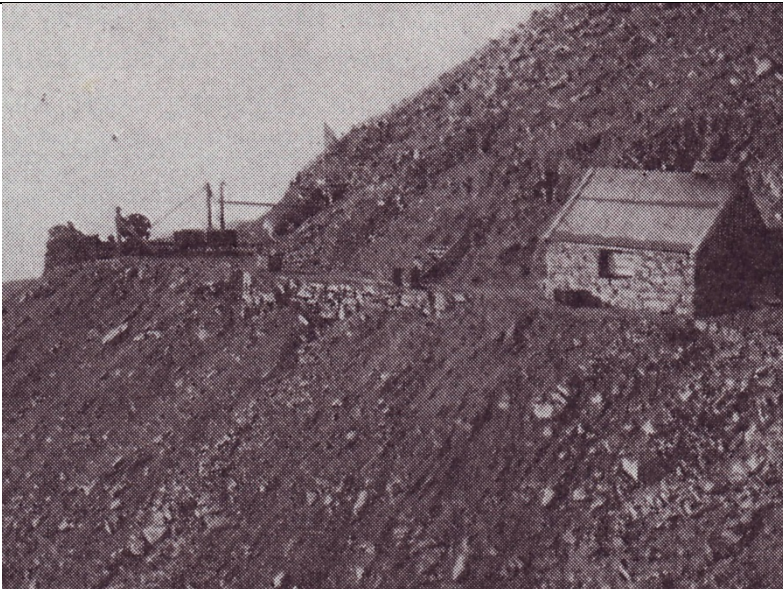


Photo probably S.A. Fangen, in Hoel 1966: 560

Summer 1903

SMITHY (Hoel 1966: 555)

Kruse 1d

Askeladden 93035-3

Summer 1904

DOUBLE ROPEWAY

(Hoel 1966: 558)

Kruse 2a

Askeladden 93035-5



Photo S.A. Fangen 1905, in Hoel 1966: 562

Summer 1904

REPLACEMENT MESS

(Hoel 1966: 558)

no proof

(unless the building was replaced by or re-used as stables: Kruse 7b, Askeladden 93035-17)



Norwegian Polar Institute, Photo Library, np002341 (S.A. Fangen)

Summer 1905

WORKERS' BARRACK almost finished

Kruse 5c

Askeladden –

WORKERS' BARRACK under construction

Kruse 5a

Askeladden 93035-24

MANAGER'S HOUSE under construction

Kruse 6d

Askeladden 93035-22



Photo S.A. Fangen 1905, in Hoel 1966: 566,
also Norwegian Polar Institute, Photo Library, np002340

Summer 1905

WORKERS' BARRACKS

Kruse 5a, 5b, 5c, 5e, 5f (not 5d)
Askeladden 93035-20, 21, -, 24, 25
(not 28)

MANAGER'S HOUSE

Kruse 6d
Askeladden 93035-22

2 DOUBLE-ROPEWAY TOWERS

Kruse 2a
Askeladden 93035-5

PRIVY (WEST)

surveyed during fieldwork 2016



Norwegian Polar Institute, Photo Library, np002339 (S.A. Fangen)

Summer 1905:

WORKERS' BARRACKS

Kruse 5a, 5c, 5e, 5f
Askeladden 93035-20, 21, -, 24

MANAGER'S HOUSE

Kruse 6d
Askeladden 93035-22

LARGE STOREHOUSE

Kruse 6a
Askeladden 93035-19



Norsk Folkemuseum, Fotosamlingen, A.B. Wilse, NF.W 05514

Summer 1906

WORKERS' BARRACKS

Kruse 5a, 5b, 5c, 5e, 5f (not 5d)
Askeladden 93035-20, 21, -, 24, 25
(not 28)

MANAGER'S HOUSE

Kruse 6d
Askeladden 93035-22

LARGE STOREHOUSE

Kruse 6a
Askeladden 93035-19

INCLINE

Kruse 3a
Askeladden 93035-7

TENT

no proof

PRIVY (WEST)

surveyed during fieldwork 2016

WATERPIPE

surveyed during fieldwork 2016



Norsk Folkemuseum, Fotosamlingen, A.B. Wilse, NF.W 05515

Summer 1906

ROOF OVER MINE ENTRANCE

Kruse 1a
Askeladden 93035-1



Norsk Folkemuseum, Fotosamlingen, A.B. Wilse, NF.W 05516

Summer 1906

WORKERS' BARRACKS

Kruse 5b, 5c, 5e, 5f (5a not visible; 5d not built)
 Askeladden 93035-20, 21, -, 25 (24 not visible, 28 not built)

MANAGER'S HOUSE

Kruse 6d
 Askeladden 93035-22

LARGE STOREHOUSE

Kruse 6a
 Askeladden 93035-19

PRIVY (EAST)

surveyed during fieldwork 2016



Norsk Folkemuseum, Fotosamlingen, A.B. Wilse, NF.W 05517

Summer 1906

WORKERS' BARRACKS

Kruse 5a, 5b, 5c, 5e, 5f (5d not built)
 Askeladden 93035-20, 21, -, 24, 25 (28 not built)

MANAGER'S HOUSE

Kruse 6d
 Askeladden 93035-22

LARGE STOREHOUSE

Kruse 6a
 Askeladden 93035-19



Norsk Folkemuseum, Fotosamlingen, A.B. Wilse, NF.W 05518

Summer 1906

WORKERS' BARRACKS

Kruse 5a, 5b, 5c, 5e, 5f (5d not built)

Askeladden 93035-20, 21, -, 24, 25 (28 not built)

MANAGER'S HOUSE

Kruse 6d
Askeladden 93035-22

LARGE STOREHOUSE

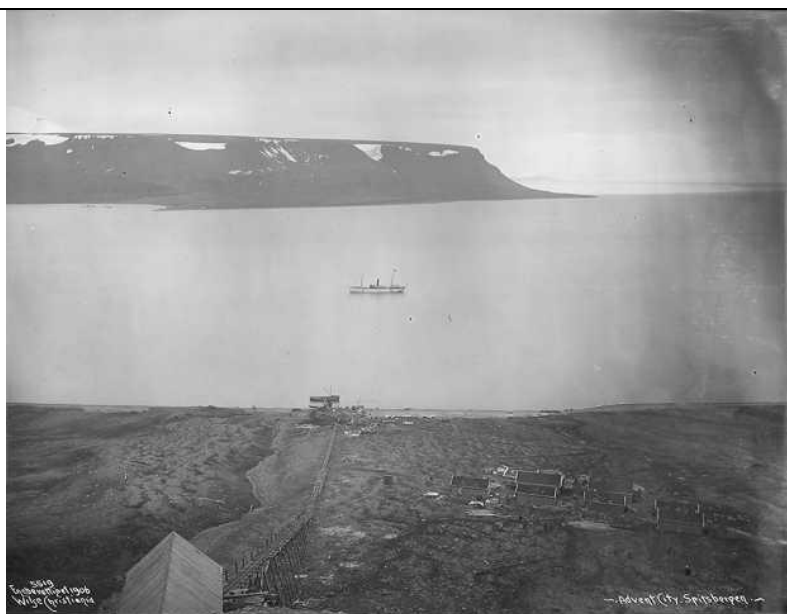
Kruse 6a
Askeladden 93035-19

INCLINE

Kruse 3a
Askeladden 93035-7

PRIVY (EAST)

surveyed during fieldwork 2016



Norsk Folkemuseum, Fotosamlingen, A.B. Wilse, NF.W 05519

Summer 1906

WORKERS' BARRACKS

Kruse 5a, 5b, 5c, 5e, 5f (5d not built)

Askeladden 93035-20, 21, -, 24, 25 (28 not built)

MANAGER'S HOUSE

Kruse 6d
Askeladden 93035-22

LARGE STOREHOUSE

Kruse 6a
Askeladden 93035-19

ROOF OVER MINE ENTRANCE

Kruse 1a
Askeladden 93035-1

INCLINE

Kruse 3a
Askeladden 93035-7

PRIVY (EAST)

surveyed during fieldwork 2016



Norsk Folkemuseum, Fotosamlingen, A.B. Wilse, NF.W 05520

Summer 1906



Norsk Folkemuseum, Fotosamlingen, A.B. Wilse, NF.W 05521

Summer 1906

MANAGER'S HOUSE

Kruse 6d

Askeladden 93035-22



Norsk Folkemuseum, Fotosamlingen, A.B. Wilse, NF.W 05522

Summer 1906

MANAGER'S HOUSE

Kruse 6d
Askeladden 93035-22

LARGE STOREHOUSE

Kruse 6a
Askeladden 93035-19



Norwegian Polar Institute, Photo Library, np003422

Summer 1906

"OFFICE" under construction

Kruse 6b
Askeladden 93035-16

"OFFICIAL HOUSE" under construction

Kruse 6a
Askeladden 93035-13



www.kinck.no, KINCK_10083

Winter 1906/7

"OFFICE" under construction
Kruse 6b
Askeladden 93035-16

"OFFICIAL HOUSE" under construction
Kruse 6a
Askeladden 93035-13

WORKERS' BARRACK under construction
Kruse 5d
Askeladden 93035-28

TENT
no proof

STABLES
Kruse 7b
Askeladden 93035-17



www.kinck.no, KINCK_10021

Winter 1906/7

CLUB HOUSE
Kruse 8b
Askeladden 39035-17

PRIVY (WEST)
surveyed in 2016

"OFFICE"
Kruse 6b
Askeladden 93035-16

"OFFICIAL HOUSE"
Kruse 6a
Askeladden 93035-13

STABLES
Kruse 7b
Askeladden 93035-17

ENGINE HOUSE
Kruse 9
Askeladden 39035-9



www.kinck.no, KINCK_10028

Winter 1906/7

CLUB HOUSE

Kruse 8b
Askeladden 39035-17

"OFFICE"

Kruse 6b
Askeladden 93035-16

PRIVY (OFFICE)

surveyed in 2016



www.kinck.no, KINCK_10024

Spring 1907?

"OFFICE"

Kruse 6b
Askeladden 93035-16

PRIVY (OFFICE)

surveyed in 2016



Hoel 1907, in Hoel 1966: 567

Summer 1907

ROOF OVER VENTILATION ADIT

Kruse 1b
Askeladden –

PRIVY (CLUB HOUSE)

Kruse
Askeladden 93035-33

CLUB HOUSE

Kruse 8b
Askeladden 39035-17

FAMILY BARRACK

Kruse 7a
Askeladden 93035-15

ENGINE HOUSE

Kruse 9
Askeladden 93035-9

STABLES

Kruse 7b
Askeladden 93035-17

SHED at beach

Kruse –
Askeladden 93035-30

ELECTRICITY POSTS

surveyed in 2016



Hoel 1907, in Hoel 1966: 568
also Norwegian Polar Institute, Photo Library, np02342

Summer 1907

PRIVY (CLUB HOUSE)

Kruse
Askeladden 93035-33

CLUB HOUSE

Kruse 8b
Askeladden 39035-17

PRIVY (WEST)

surveyed in 2016

WORKERS' BARRACK

Kruse 5d
Askeladden 93035-28

(no TENT)



038-069 (Miles Oglethorpe private collection)

Summer 1907

PRIVY (CLUB HOUSE)

Kruse
Askeladden 93035-33

CLUB HOUSE

Kruse 8b
Askeladden 39035-17

MYSTERY FOUNDATION

Kruse 8a
Askeladden 93035-26

PRIVY (WEST)

surveyed in 2016

WORKERS' BARRACK

Kruse 5d
Askeladden 93035-28

FAMILY BARRACK

Kruse 7a
Askeladden 93035-15



038-070 (Miles Oglethorpe private collection)

Summer 1907

PIER

Kruse –
Askeladden –



038-071 (Miles Oglethorpe private collection)

Summer 1907

"OFFICE"

Kruse 6b
Askeladden 93035-16

"OFFICIAL HOUSE"

Kruse 6a
Askeladden 93035-13

FAMILY BARRACK

Kruse 7a
Askeladden 93035-15



038-106 (Miles Oglethorpe private collection)

Summer 1907

ROOF OVER MINE ENTRANCE

mine entrance:
Kruse 1a
Askeladden 93035-1

INCLINE

Kruse 3a
Askeladden 93035-7

ROOF OVER VENTILATION ADIT

Kruse 1b
Askeladden –

ELECTRICITY POST

surveyed in 2016



Norsk Folkemuseum, Fotosamlingen, A.B. Wilse, NF.W 09355

Summer 1908

CLUB HOUSE

Kruse 8b
Askeladden 39035-17

PRIVY (WEST)

surveyed in 2016

ROOF OVER VENTILATION ADIT

Kruse 1b
Askeladden –

WORKERS' BARRACK

Kruse 5d
Askeladden 93035-28

"OFFICE"

Kruse 6b
Askeladden 93035-16

"OFFICIAL HOUSE"

Kruse 6a
Askeladden 93035-13

FAMILY BARRACK

Kruse 7a
Askeladden 93035-15



Norsk Folkemuseum, Fotosamlingen, A.B. Wilse, NF.W 09356

Summer 1908

INCLINE

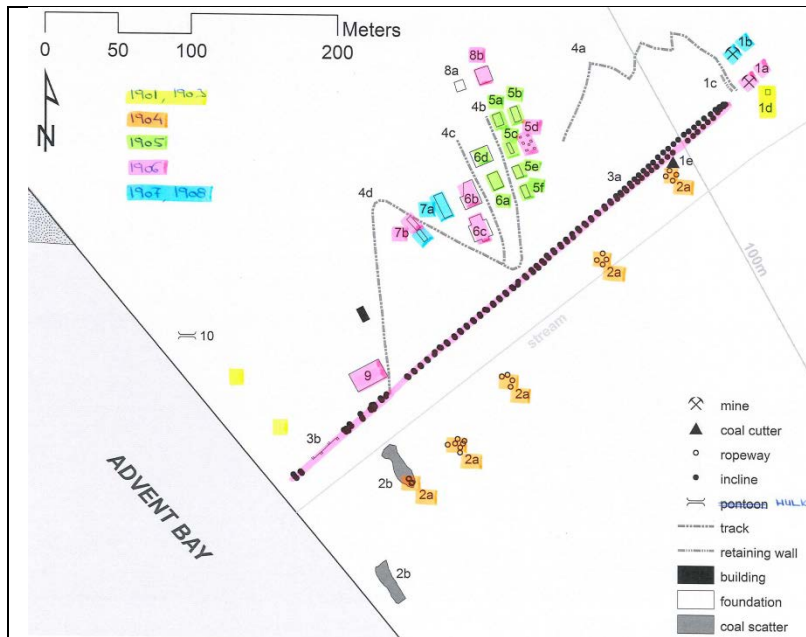
Kruse 3a
Askeladden 93035-7

ENGINE HOUSE

Kruse 9
Askeladden 39035-9

STABLES & PIG HOUSE

Kruse 7b
Askeladden 93035-17



F. Kruse 2013.

Summer 1908

This map is an overview of the development of Advent City between 1901 and 1908, after which mining operations stopped and the decline of the settlement began.

The following section concerns this decline.



Norwegian Polar Institute, Photo Library, np003825 (Orvin Anders, 'fangsthytte')

post-1908

"OFFICIAL HOUSE"

Kruise 6a

Askeladden 93035-13

 <p data-bbox="225 741 954 770">Norwegian Polar Institute, Photo Library, np003826 (Gunnar Horn)</p>	<p data-bbox="1018 197 1129 226">post-1908</p> <p data-bbox="1018 257 1193 286">ENGINE HOUSE</p> <p data-bbox="1018 293 1102 322">Kruse 9</p> <p data-bbox="1018 329 1241 358">Askeladden 39035-9</p>
<p data-bbox="188 808 245 837">1909</p> <p data-bbox="188 875 1283 904">The winter watchmen were not paid and therefore started to take movable possession (Kruse 2013).</p>	
<p data-bbox="188 943 245 972">1910</p> <p data-bbox="188 1010 1378 1128">“From at least 1910, the Arctic Coal Company began to salvage material from the Spitsbergen [sic] Coal and Trading Company’s settlement, Advent City, paying the owners a fair value. At first they took small goods and equipment, possibly including house furnishings, doors and windows, although the records aren’t specific.” (Hartnell 2009: 169)</p>	
<p data-bbox="188 1167 341 1196">Summer 1912</p> <p data-bbox="188 1234 1098 1263">Hiorth took out an option on the claim and plant at Advent City (Johannessen 1997)</p> <p data-bbox="188 1301 1337 1361">In May 1912, the American dismantled an abandoned bunk house in Advent City in seven hours, moved it across the ice, and re-built it to house 50 men. (Dole 1920 II: 136)</p> <p data-bbox="188 1400 1358 1496">The Arctic Coal Company removed a small house from Advent City to house 50 men (Hartnell 2009: 155) → Bunkhouse #7 (Note: the workers’ barracks were built to house only 16 men; this house may have been the family barrack.)</p>	
<p data-bbox="188 1525 325 1554">1912 – 1913</p> <p data-bbox="188 1592 1358 1756">“During 1912 – 1913, the Arctic Coal Company took five houses and probably also took a pig house. [As footnote:] These structures became Bunkhouses #7, #8 and #17, the pig house, the bunkhouse at Mine 2 [started in 1912]. The Arctic Coal Company intended to place one hut at the head of the Flower Valley, now Bloomsterdalen, but appears not to have done so. The final location of that structure is not known to this project.” (Hartnell 2009: 169)</p>	
<p data-bbox="188 1794 245 1823">1913</p> <p data-bbox="188 1861 1347 1980">“In 1913, Scott Turner considered a novel alternative to formal housing; to tow hulks to Advent Bay, beach them and altering the decks and one under-story for barrack accommodations, leaving the lower deck for storage. He abandoned the plan before the outset of summer when he found that it would cost more than simply building more bunk-houses.” (Hartnell 2009: 169)</p>	

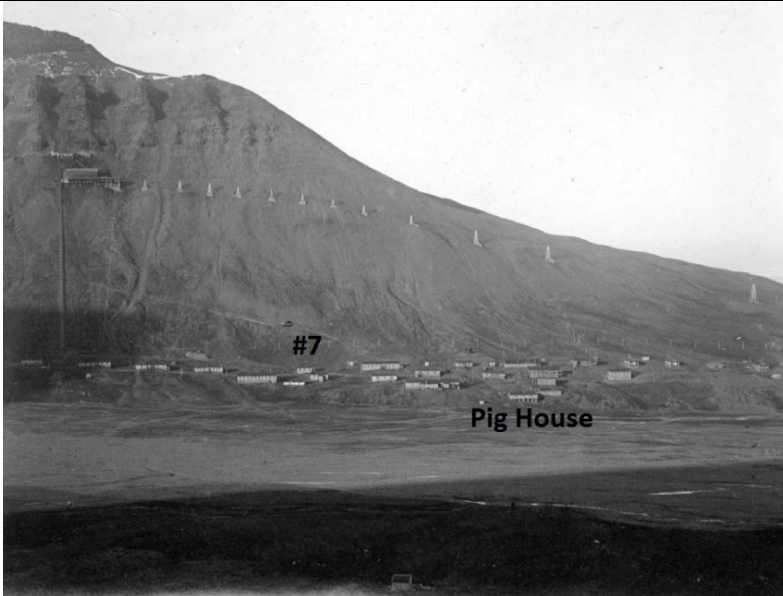


Kruse 2014.

Cultural heritage

Although it is not known whether the Arctic Coal Company or anyone else purchased hulks for the construction of **barrack barges**, it is the best explanation for this wreck (Kruse 10, Askeladden 93034) at Advent City.

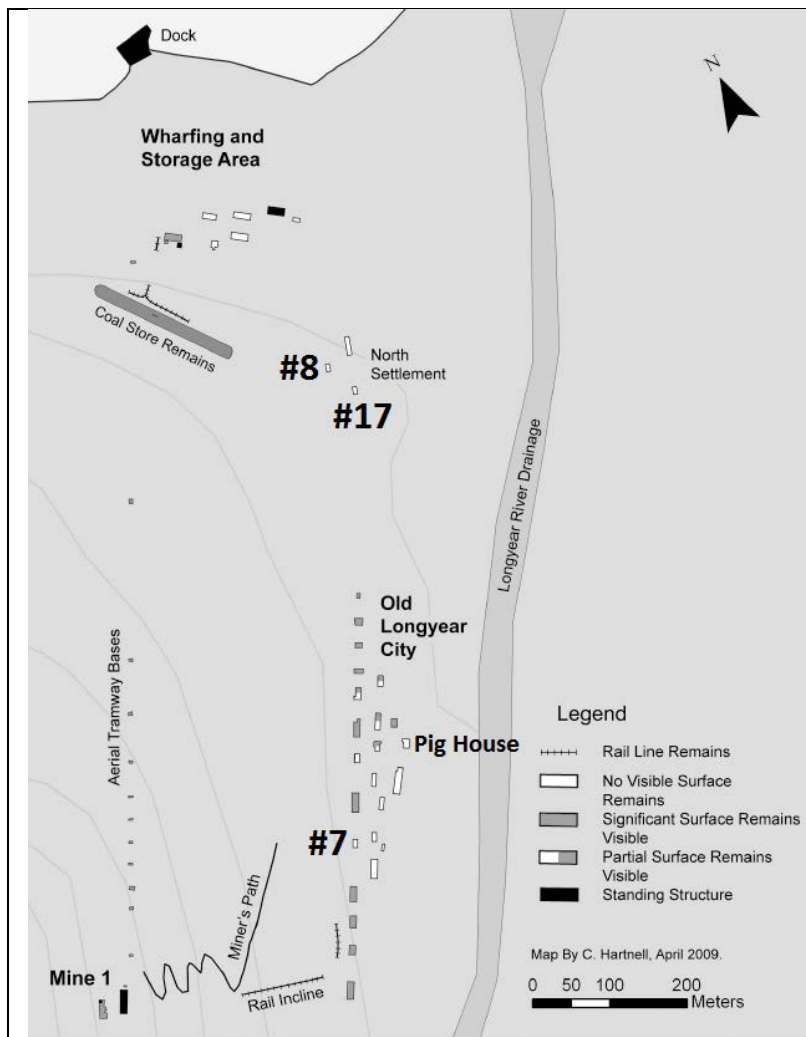
Neither a coal lighter, water boat, or pontoon are fitting.



MTU, Keweenaw Digital Archives, No Neg 2007-07-30-24

1915

Photo of Longyear City showing a former **WORKERS' BARRACK** from Advent City, Bunkhouse #7, as well as the **PIG HOUSE**.



Hartnell 2009.

Archaeological remains

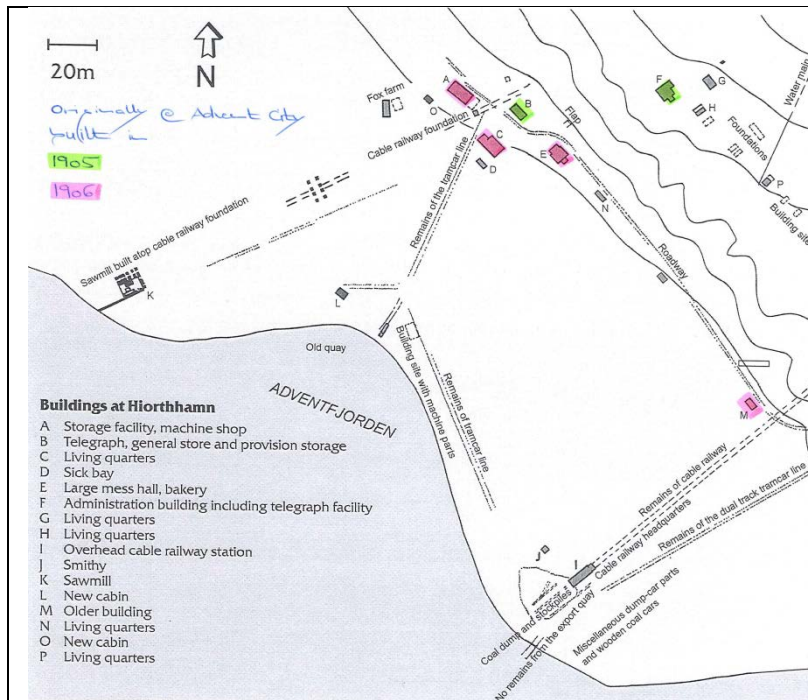
Hartnell (2009) suggests that two additional **WORKERS' BARRACKS** from Advent City became Bunkhouses #8 and #17 in the small "North Settlement". No photos are known yet, which would also discern the nature of the third building at this location.

Another building, probably a fourth **WORKERS' BARRACK**, was placed at Mine 2.

The fifth building, the one once destined for Bloomsterdalen, can no longer be traced. This may have been the **FAMILY BARRACK**.

1914 – 1917

Hiorth fitted out expeditions in 1914 and 1915. In 1916, a Norwegian company is founded, and the Spitzbergen Coal & Trading Company sold the claim and plant to Hiorth. In 1917, new barracks and houses were built in Hiorthhamn. "More than 60 people spent the winter of 1917/18 at the facility. Most of the houses had been moved from Advent City." (Johannessen 1997).



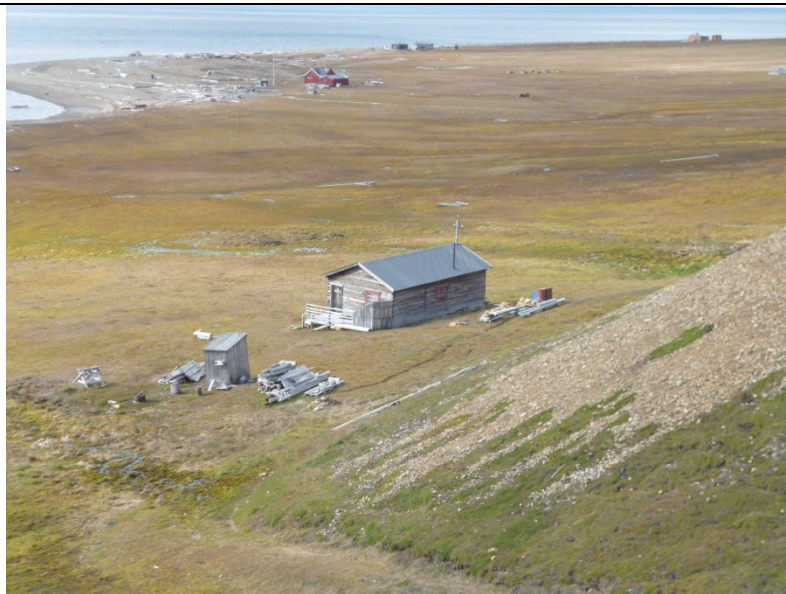
Løkken after Hoel, in Johannessen 1997.

Winter 1917/18

This map is an overview of which buildings had been moved from Advent City to Hiorthhamn by winter 1917/18.

Kruse (2014) has previously dealt with the development of Hiorthhamn, but in the report, it has been overlooked that “M older building” is in fact a former **WORKERS’ BARRACK** from Advent City.

Why would this building be “older” than the others?! It may already have been brought here during Hiorth’s expeditions in 1914 or 1915.



F. Kruse, fieldwork August 2016.

Cultural heritage

“M older building” at Hiorthhamn is an original **WORKERS’ BARRACK** from Advent City.



F. Kruse, fieldwork August 2016.

Cultural heritage

“M older building” at Hiorthhamn is an original **WORKERS’ BARRACK** from Advent City.

The text reads “[...]ck Hiorth Eiendom” and suggests that Hiorth used this as a claim hut.

The left window has been enlarged since to overlap with the text.



Martin “from Lyr Camping”, site visit August 2016.

Cultural heritage

This building up at the mine at Hiorthhamn is also an original **WORKERS’ BARRACK** from Advent City.

The origins of the various extensions is unclear.

In order to establish if all houses and plant of Advent City have now been accounted for, we can use the document "The Spitzbergen Coal & Trading Co. Limited. Actual original cost of plant, machinery, houses, stores, etc." (MTU Archive and Copper Country Collection, Longyear Collection, MS-031, Box 4, folder 20). The costs have been omitted. The items are checked against the site formation processes as outlined in this report.

Actual original [...] plant, machinery, houses, stores, etc.	Post-abandonment destination
Gas producer plant with three 40 H.P. gas engines and a 2 ¼ H.P. oil engine for starting complete	Identified on site at Advent City.
Electric plant including three 40 H.P. dynamos, switch board, distribution board, cables for power and lighting, electric fan 5 feet diameter, 12 ½ H.P. motor for driving lathes, saw, drilling machines, etc.	Probably taken by Arctic Coal Company, electric fan mentioned in written sources.
1 electrical coal cutter and spare parts	Partly identified on site at Advent City, probably salvaged for parts.
Houses:	
- 8 barracks for 16 men (two not erected)	One identified in a photo of Longyear City, three more probably taken by ACC. Two identified on site at Hiorthhamn, two more probably taken by Hiorth.
- 1 barrack for married people	Probably taken by ACC.
- 1 store & shop	Identified on site in Hiorthhamn.
- 1 club house	Identified on site in Hiorthhamn.
- 1 official house	Identified on site in Hiorthhamn.
- 1 manager's house	Identified on site in Hiorthhamn.
- Office	Identified on site in Hiorthhamn.
- 1 surgery & sick ward (not erected)	Not identified. Were mystery foundations (Kruse 8a, Askeladden 93035-26 perhaps meant for this building?)
- 1 large engine house	Identified on site at Hiorthhamn.
- 2 hunting huts with stables	Identified in photos, former and present locations unknown.
Colliery stores including drilling machine, picks, shovels, hammers, oils, ropes, iron, timber, explosives, Wills lights, etc.	Completely removed from site.
Stores, including food, clothing, furniture, stoves, household utensils, boots, tobacco, etc.	Completely removed from site.
30 tons rails 21 lbs per yard	Mostly removed, only a handful have been found on site.
70 pit tubs	Completely removed from site with the exception of one or two.
1 lathe & tools	Removed from site.
1 saw bench and 17 saws	Removed from site.
1 punching & shearing machines	Removed from site.
2 drilling machines	Removed from site.
Stock & dies	Removed from site.
1 dial & 1 level with legs 7 surveying instruments	Removed from site.

Actual original [...] plant, machinery, houses, stores, etc.	Post-abandonment destination
1 sewing machine	Removed from site.
3 carts	Identified in photos; removed from site.
3 sledges	Removed from site.
5 lighters (70 tons) at 210 each	Removed from site.
4 boats	Removed from site.
1 wooden pier	Identified in photos; removed from site.
1 pig house & stables	Identified in a photo of Longyear City.
1 explosives magazine	Probably identified on site at Advent City and in a photo; removed from site.
1 blacksmith's shop	Is this the smithy erected in 1903? Ruin identified on site at Advent City.
1 tub weighing machine & house	Not identified; removed from site.
Electric fittings	Completely removed.
Self-acting incline from pit to shore	Foundations identified on site at Advent City, mostly removed from site.

The removal of items by disgruntled winter watchmen, the Arctic Coal Company, Hiorth, and probably others makes the site of Advent City an unusually 'clean' site in archaeological terms.