

DOI: 10.5281/zenodo.5879916

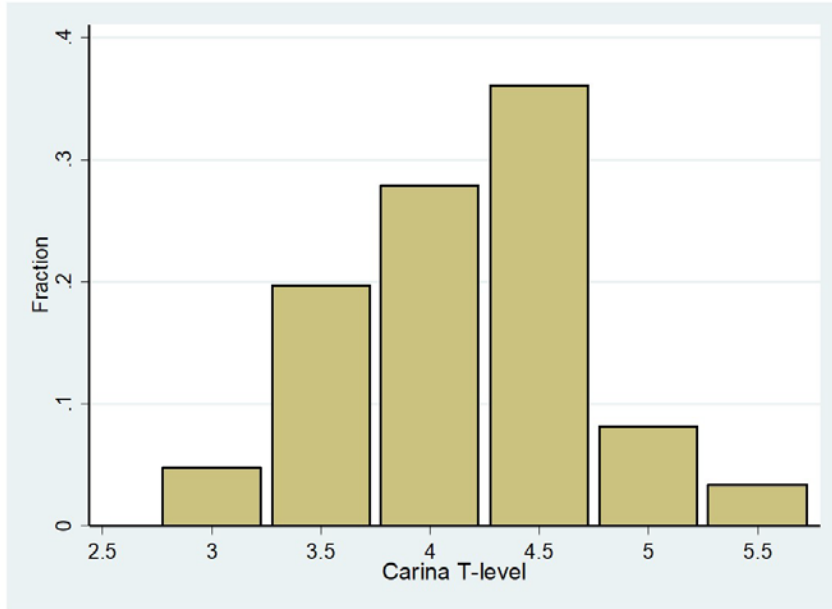
Cerone, Jennifer B., & Pinheiro, Joaquim M. B. (2021). Tracheal length in intubated neonates - supplemental figures.

Zenodo. <https://doi.org/10.5281/zenodo.5879916>

[HTTPS://ZENODO.ORG/RECORD/5879916#.YCOLO2JMLRY](https://ZENODO.ORG/RECORD/5879916#.YCOLO2JMLRY)

SUPPLEMENTAL FIGURE 1:

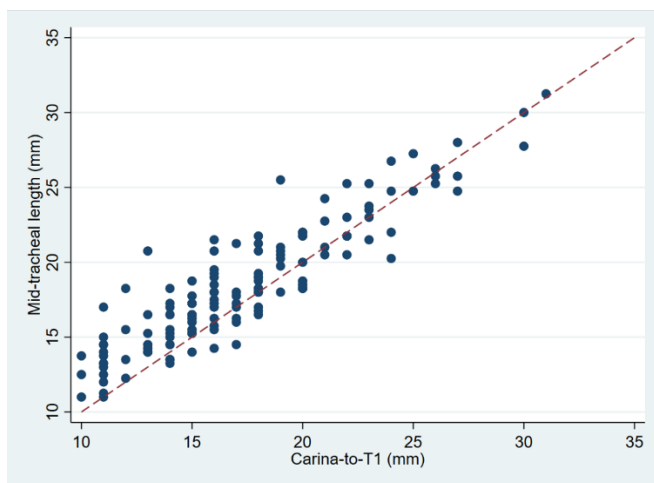
Histogram showing the frequency distribution of the carina level, ranging from T3 to T5.5



SUPPLEMENTAL FIGURE 2:

Carina to mid-tracheal length, assuming that the mid-trachea overlies either the T1 or T1.5 vertebral levels. Dashed line is identity, where mid-tracheal length would equal carina to mid-T1 length, or carina to T1.5 length.

A) Carina to T1



B) Carina to T1.5

