

Principal Components Report

Page/Date/Time 1 01-Dec-21 21:10:57
 Database D:\ONEDRIVE\LP5 LIPIDOMIKA\KLASTERNA JETRA.S0

Descriptive Statistics Section

Variables	Count	Mean	Standard Deviation	Communality
jetra_c	18	123.1307	119.3745	1.000000
jetra_s	18	138.1656	124.9316	1.000000
jetra_m_s	18	159.904	151.8847	1.000000

Correlation Section

Variables	jetra_c	jetra_s	jetra_m_s
jetra_c	1.000000	0.985982	0.973163
jetra_s	0.985982	1.000000	0.991668
jetra_m_s	0.973163	0.991668	1.000000

Phi=0.983635 Log(Det|R)=-7.726903 Bartlett Test=117.19 DF=3 Prob=0.000000

Bar Chart of Absolute Correlation Section

Variables	jetra_c	jetra_s	jetra_m_s
jetra_c			
jetra_s			
jetra_m_s			

Phi=0.983635 Log(Det|R)=-7.726903 Bartlett Test=117.19 DF=3 Prob=0.000000

Eigenvalues

No.	Eigenvalue	Individual Percent	Cumulative Percent	Scree Plot
1	2.967229	98.91	98.91	
2	0.027337	0.91	99.82	
3	0.005434	0.18	100.00	

Eigenvectors

Variables	Factor1	Factor2	Factor3
jetra_c	-0.575770	0.761426	0.297857
jetra_s	-0.579385	-0.122926	-0.805731
jetra_m_s	-0.576890	-0.636490	0.511936

Principal Components Report

Page/Date/Time 2 01-Dec-21 21:10:57
 Database D:\ONEDRIVE\LPS LIPIDOMIKA\KLASTERNA JETRA.S0

Bar Chart of Absolute Eigenvectors



Factor Loadings

Variables	Factor1	Factor2	Factor3
jetra_c	-0.991801	0.125893	0.021958
jetra_s	-0.998027	-0.020324	-0.059397
jetra_m_s	-0.993731	-0.105236	0.037739

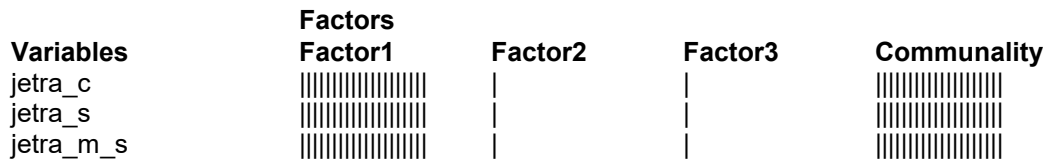
Bar Chart of Absolute Factor Loadings



Communalities

Variables	Factor1	Factor2	Factor3	Communality
jetra_c	0.983669	0.015849	0.000482	1.000000
jetra_s	0.996059	0.000413	0.003528	1.000000
jetra_m_s	0.987501	0.011075	0.001424	1.000000

Bar Chart of Communalities



Principal Components Report

Page/Date/Time 3 01-Dec-21 21:10:57
Database D:\ONEDRIVE\LPS LIPIDOMIKA\KLASTERNA JETRA.S0

Factor Structure Summary

	Factor1	Factor2	Factor3
jetra_s			
jetra_m_s			
jetra_c			

Residual Section

Row	T2	T2 Prob	Q0	Q1	Q2
1	.11	0.9918	0.02	0.00	0.00
2	.80	0.8702	2.29	0.00	0.00
3	7.90	0.1162	2.43	0.15*	0.01
4	.81	0.8690	1.12	0.01	0.00
5	.77	0.8773	2.25	0.00	0.00
6	1.16	0.7952	2.66	0.00	0.00
7	8.18	0.1080	14.10	0.02	0.02
8	.43	0.9437	1.10	0.00	0.00
9	3.14	0.4534	0.72	0.03	0.01
10	11.12	0.0507	7.82	0.08	0.04*
11	.74	0.8821	1.08	0.00	0.00
12	1.36	0.7556	2.34	0.01	0.00
13	.77	0.8764	1.53	0.00	0.00
14	.80	0.8696	1.03	0.01	0.00
15	.72	0.8862	2.09	0.00	0.00
16	.87	0.8557	2.51	0.00	0.00
17	.75	0.8809	2.16	0.00	0.00
18	10.57	0.0582	3.76	0.24*	0.00

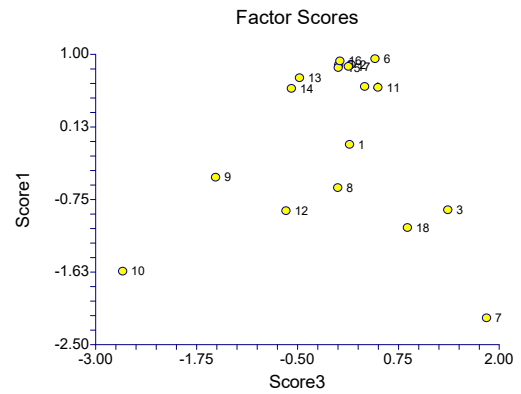
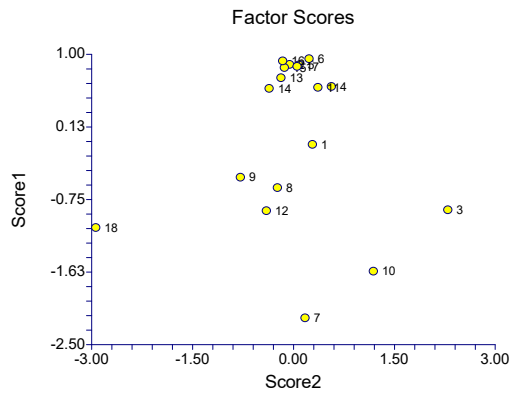
Principal Components Report

Page/Date/Time 4 01-Dec-21 21:10:57
Database D:\ONEDRIVE\LPS LIPIDOMIKA\KLASTERNA JETRA.S0

Factor Score

Row	Factor1	Factor2	Factor3
1	-0.0870	0.2842	0.1474
2	0.8776	-0.0561	0.1652
3	-0.8751	2.2969	1.3647
4	0.6111	0.5667	0.3346
5	0.8711	0.0842	0.0132
6	0.9463	0.2335	0.4621
7	-2.1782	0.1745	1.8448
8	-0.6085	-0.2362	0.0009
9	-0.4829	-0.7868	-1.5124
10	-1.6156	1.1907	-2.6637
11	0.6006	0.3651	0.4987
12	-0.8865	-0.4006	-0.6407
13	0.7165	-0.1833	-0.4726
14	0.5881	-0.3595	-0.5734
15	0.8395	-0.1332	0.0067
16	0.9194	-0.1581	0.0278
17	0.8530	0.0562	0.1323
18	-1.0895	-2.9380	0.8644

Plots Section



Principal Components Report

Page/Date/Time
Database

5 01-Dec-21 21:10:57
D:\ONEDRIVE\LP5 LIPIDOMIKA\KLASTERNA JETRA.S0

