



**CARL
ABRC**

Portage

Shared Stewardship of Research Data

COAR May 10, 2017
Martha Whitehead, President, CARL

Mission: Shared Stewardship of Research Data in Canada

Portage contributes actively to research data management in Canada through a sustainable network of library-based services and collaborative infrastructure

portage

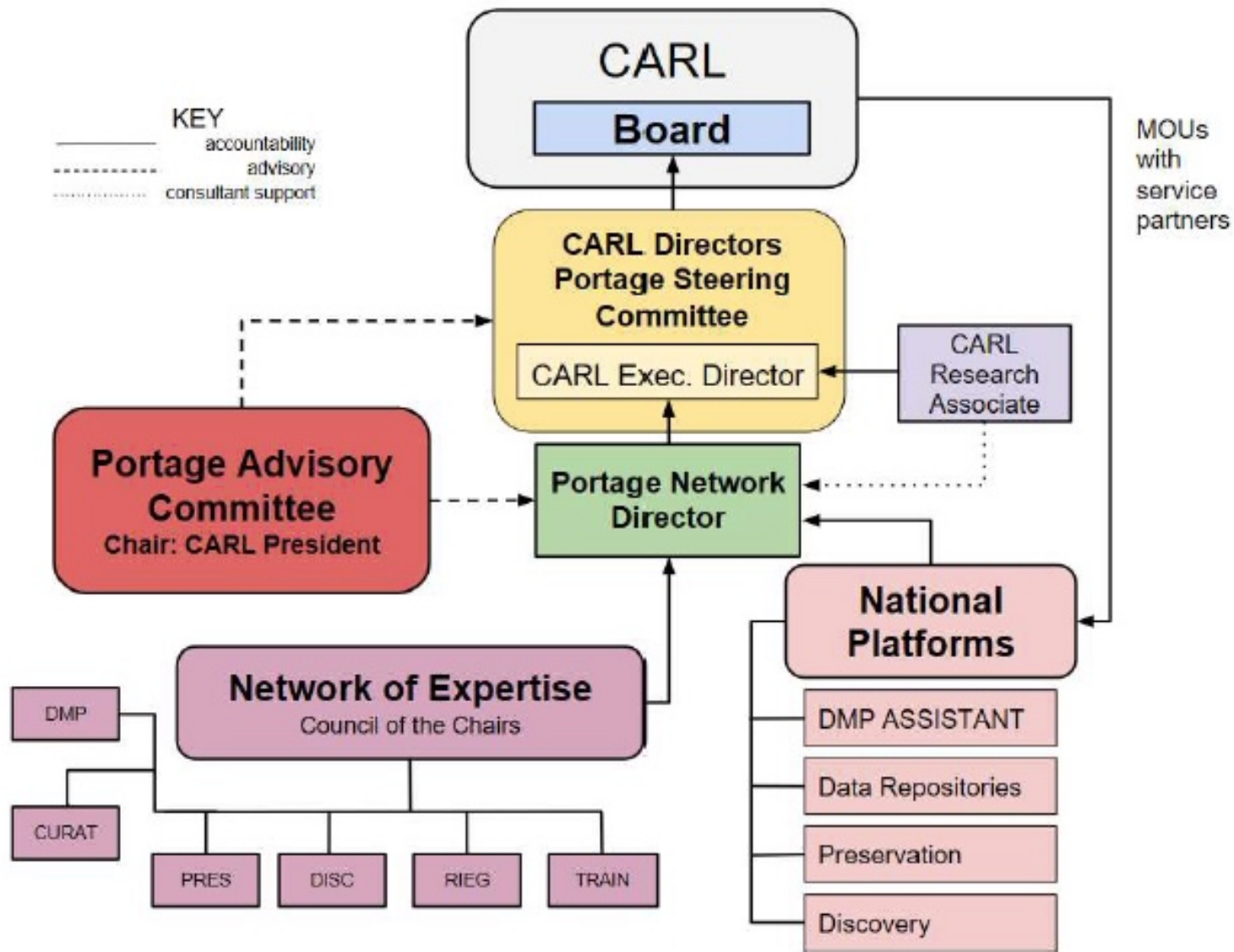
CARL  **ABRC**

Why is this important?

- Canada has been lacking a comprehensive digital infrastructure to support the collection, management and reuse of research data
- Research data management is too big and complex to deal with only at the local or regional level: we must collaborate across regions and with a variety of stakeholders
- Portage leverages library expertise in data management, discovery and long-term preservation

Who is Portage?

- Launched by CARL in 2015
- Currently funded by the research library community, with significant in-kind support from members and other stakeholder organizations
- Managed by a Director, who is accountable to the CARL Board, and receives strategic advice from a multi-stakeholder external Advisory Committee and from the Chairs of its expert groups serving as a Council



Building on strong academic library collaborations



**Council of Atlantic
University Libraries**

**Conseil des bibliothèques
universitaires de l'Atlantique**

OCUL Ontario Council of
University Libraries



and with multiple RDM stakeholders



THE LEADERSHIP COUNCIL
LE CONSEIL DU LEADERSHIP

compute | calcul
canada | canada



Canada



canarie



CARL ABRC portage

RDC  DRC

Research Data Canada – Données de Recherche Canada



casrai

Portage Goals

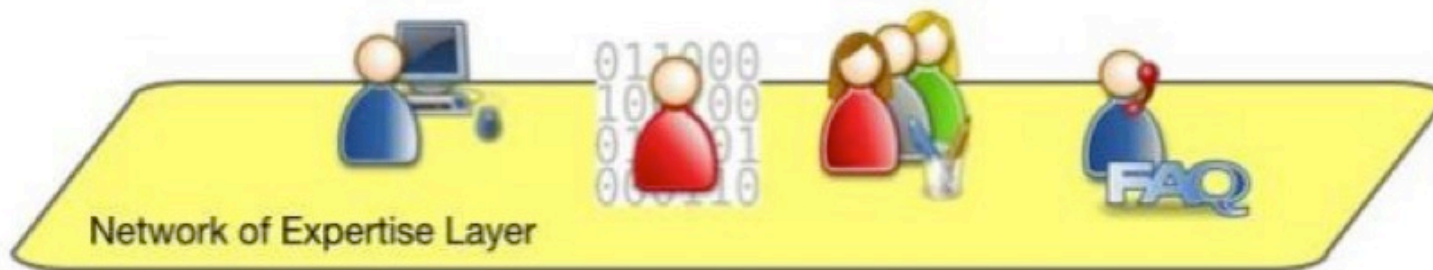
1. Foster a **community of practice** for research data management (RDM)
2. Facilitate and provide leadership in the **development of RDM infrastructure**
3. Engage and advocate for RDM with **stakeholder communities**

1. Foster a community of practice for RDM

Portage Network of Experts, with groups focused on:

- Curation
- Data Discovery
- Data Management Plan
- Preservation
- Research Intelligence
- Training

Layers of a Community of Practice



2. Facilitate and provide leadership in the development of RDM infrastructure

- *DMP Assistant*
- *Federated Research Data Repository*
- *Dataverse North*

DMP Assistant is a bilingual tool for preparing data management plans (DMPs). The tool follows best practices in data stewardship and walks researchers step-by-step through key questions about data management.

Sign in

If you have an existing account with DMP Assistant or previous

Step 1

Sign up with DMP Assistant

Step 2

Sign in and select a template under Organizations. The Portage template is the default.

Step 3

Answer the questions that are relevant to your work. Guidance and examples are provided.

Step 4

Revisit the tool throughout your research to review or revise your answers.

single sign-in authentication. For
ent. You will have the option to
s ID when that feature

DMP Assistant as a significant “quick win”

Model of network collaboration and trust-building

- Host institution, many in-kind contributors
- Bilingual development – truly national platform
- Drawing on and contributing to international community
- Foundation for strong engagement with Tri-Agency (federal research funding agencies)
 - “Portage has made the data management policy possible.”

Federated Research Data Service

Envisioned national service of several components: repositories, preservation pipeline, discovery engine and support

Two aspects:

- Discover and access research data held in repositories across the country
- Operate a new research data repository that can handle large data files and large datasets

Federated Research Data Repository

- Partnership of Portage and Compute Canada to develop scalable software framework for long-term retention and discovery of research data, using Globus Connect, Globus Publication and Archivematica
- January 2016: project launch
- March 2017: alpha phase concluded
- April 2017: prototype interface and software beta testing
- January 2018: production

See <https://www.computecanada.ca/techrenewal/rdm/about/>

The federated data repository and discovery service is not intended to serve as a monolithic solution for all of Canada's research data needs.

Rather, it is meant to provide a framework that allows existing and future data repositories to be federated within a coherent system.

Dataverse North

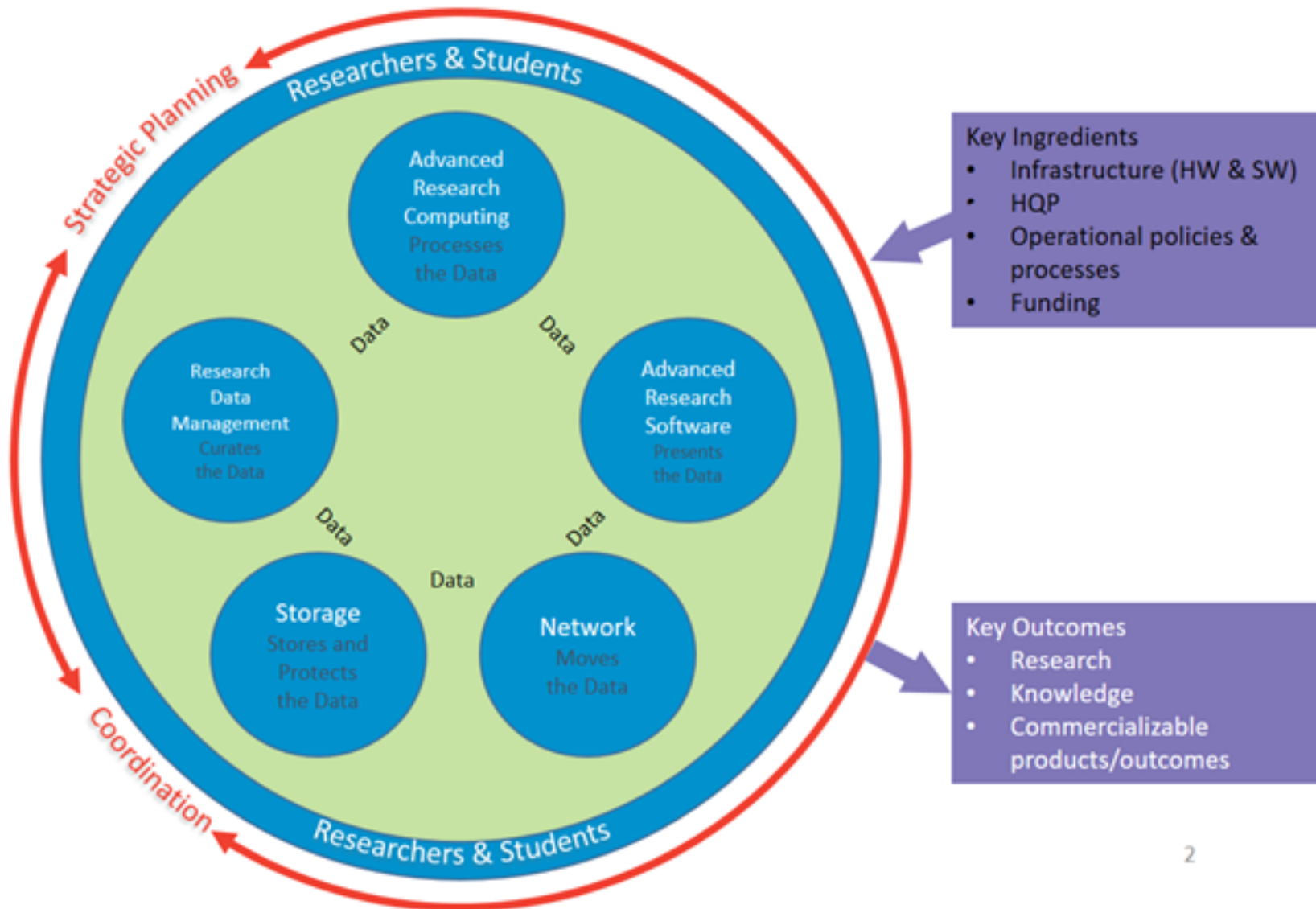
- Portage in conjunction with Canadian institutions hosting local Dataverse instances in two regions
- Working to develop a community of practice for libraries using or interested in using Dataverse
- Investigating gaps and opportunities that could be addressed by nationally coordinated strategies and services for Dataverse, including training, infrastructure development, and support for researchers and librarians, including hosting services offered by regional providers

3. Engage and advocate for RDM with stakeholder communities

For example,

- Social Sciences and Humanities Research Council of Canada (SSHRC) DMP Workshop
- Outreach to the Natural Sciences and Engineering Research Council of Canada (NSERC)
- RDM modules for the Canadian Institutes of Health Research (CIHR)
- Leadership Council on Digital Infrastructure

Challenges and Opportunities: Digital Research Infrastructure Ecosystem



Opportunities

- Research libraries at national tables
- Funding
- Collaboration

Challenges

- Institutional needs – hands-on & high-level
- Funding
- Collaboration

THE PORTAGE NETWORK is dedicated to the shared stewardship of research data in Canada through:

- Developing a national research data culture
- Fostering a community of practice for research data
- Building national research data services and infrastructure

Launched in 2014 by the [Canadian Association of Research Libraries](#), Portage works within the library community to coordinate expertise, services, and technology in research data management, seeking to collaborate with other research data management stakeholders.

Research data culture represents widely shared values and principles for digital data management.



DMP Assistant

[Sign In](#)

[Sign Up](#)

If you have an existing account with DMP Assistant or previous version of DMP Builder.

New to DMP Assistant? Sign up today.

NEWS

UBC Library Contributes Search Interface to Federated Research Data Repository
OCTOBER 24, 2016

Portage at Acfas
SEPTEMBER 28, 2016

Tweets by [@portageCARLABRC](#)

 Portage Retweeted

Thank you!

Questions? Thoughts?