



Supporting researchers in managing data

COAR RDM Working Group

Venice, 10 May, 2017







Robin Rice
Data Librarian and Head, Research Data Support
EDINA and Data Library
Information Services
R.Rice@ed.ac.uk





Overview

-  The UoE Research Data Service – tools & support for working across the data lifecycle
-  User journey workflow
-  Focus on support for Data Management Planning
-  Edinburgh DataShare repository current status



RDM as part of research support: tools & support for working across the data lifecycle



Service developed as part of RDM Roadmap, 2012-2017, and in support of the University Research Data Management Policy (2011)

Information Services RESEARCH DATA SERVICE

Research Data Service home

Planning data

Working with data

Sharing & preserving data

Data training

About the research data service

Home > Information Services > Research Support > Research Data Service

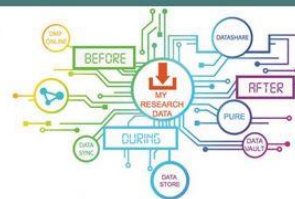
Contact us

Research data management planning



Tools and support for creating data management plans

Working with active research data



Tools and support for sourcing, managing and using data during a project

Sharing & preserving research data



Ensuring that research data are shared and preserved at the end of a project

About the Research Data Service

The Service is a suite of tools and support that helps staff and students be effective with their research data before, during and after their project.

Training

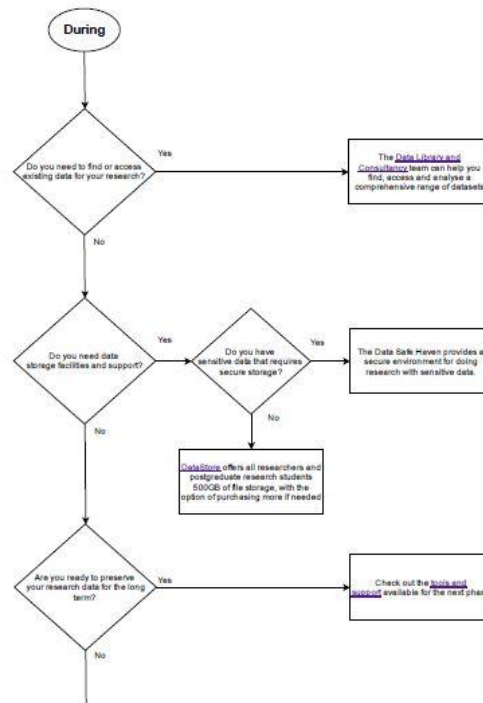
A range of training programmes on using data and on research data management (RDM): scheduled workshops, online courses, how to request a tailored workshop for your group.

Edinburgh Research Data Blog

The Data Blog features updates on services, projects and events from the Research Data Service team.

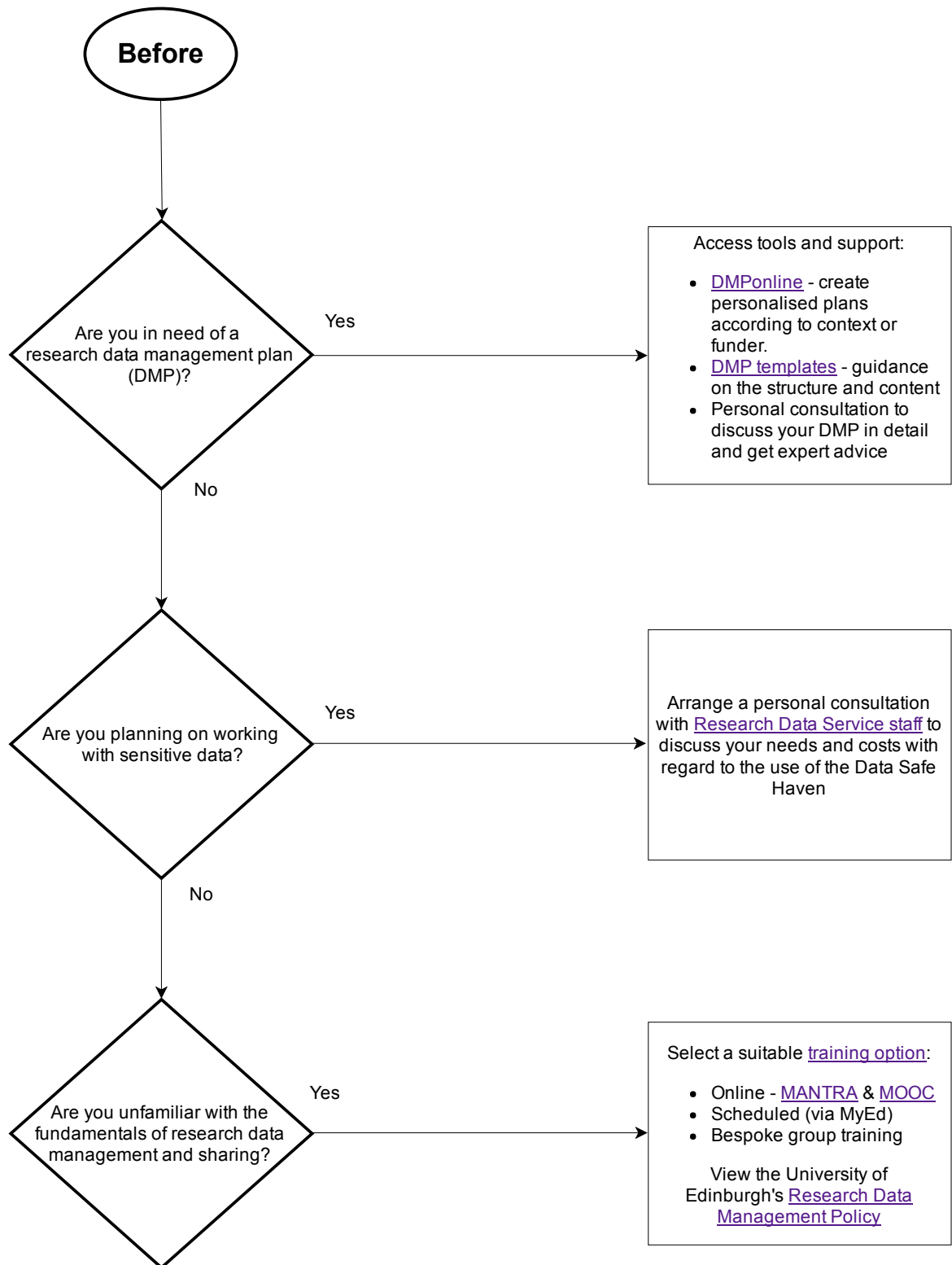


User journey workflow



Research Data Service

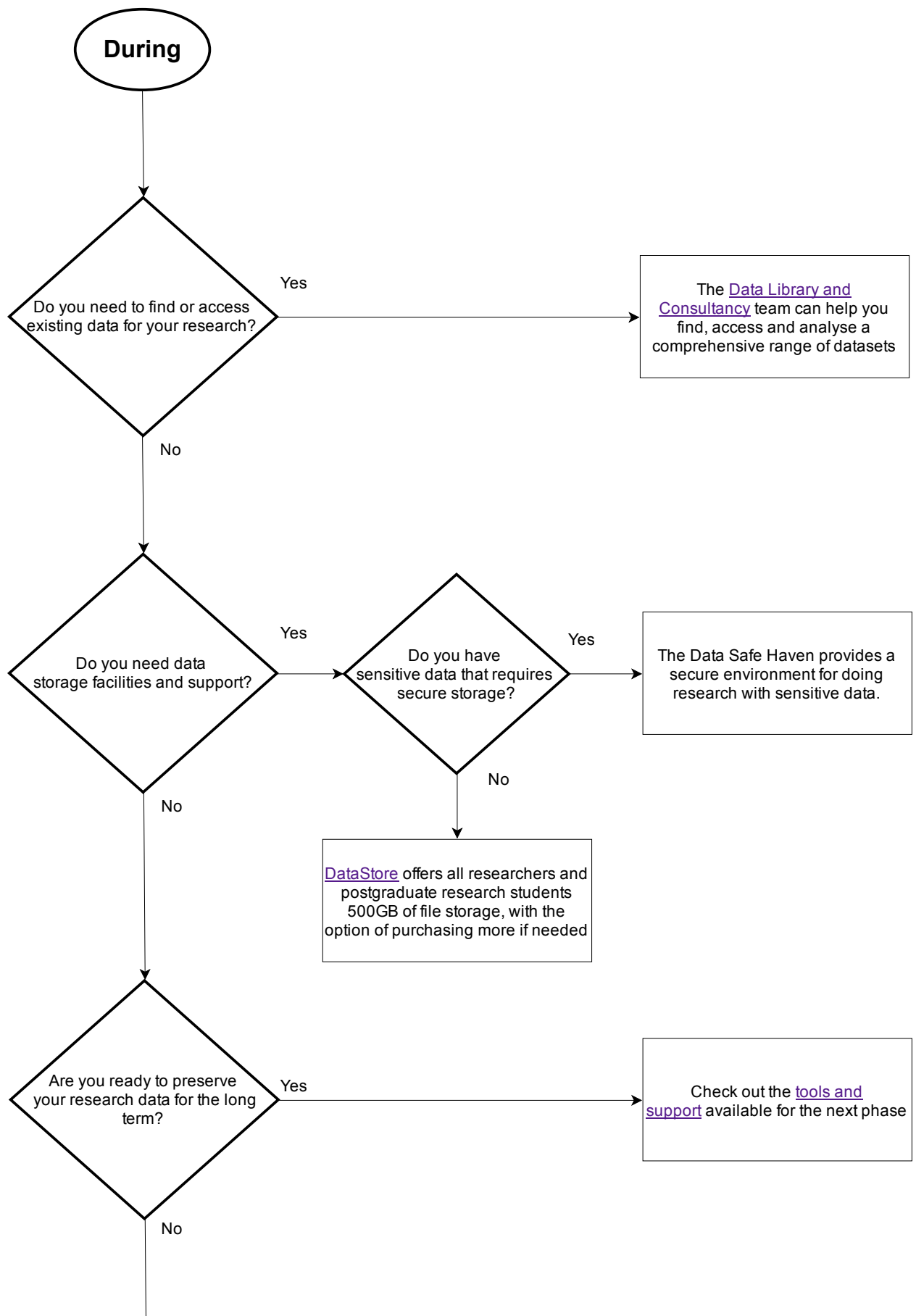
Providing a suite of tools and support for all stages of the research data management process

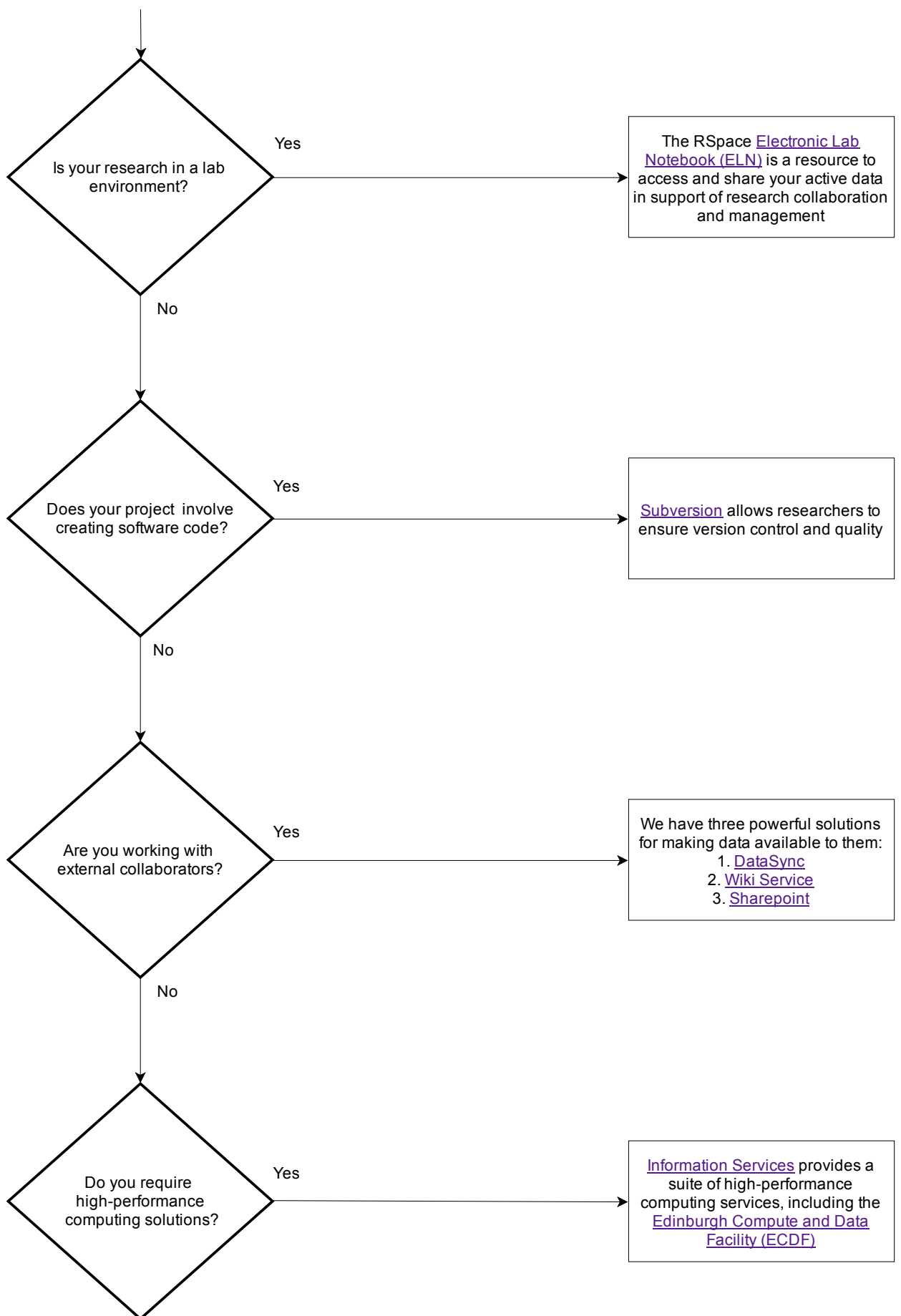


Looking for specific advice and support? Contact the Research Data Service team: data-support@ed.ac.uk, tel: 515277

Research Data Service

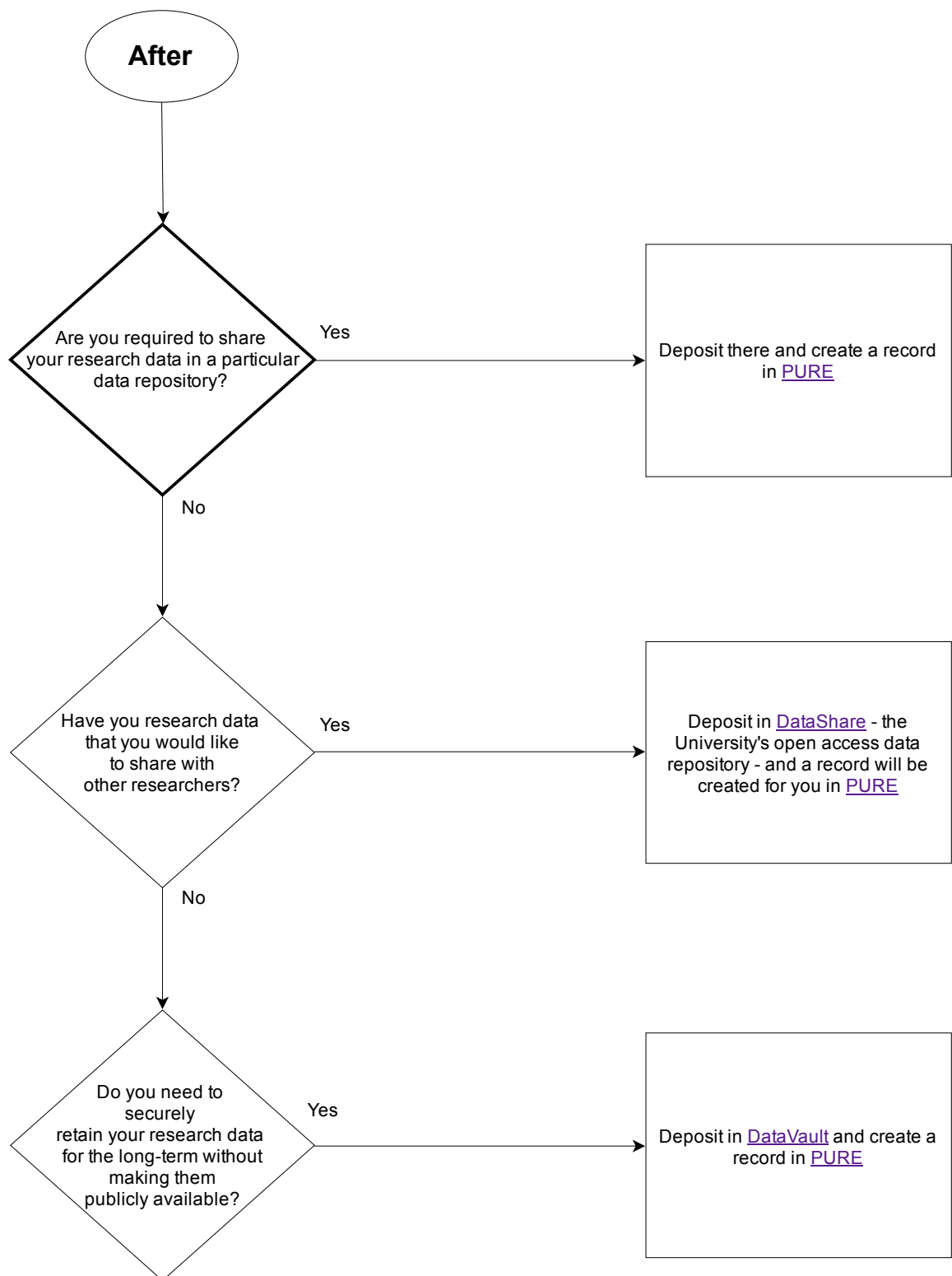
Providing a suite of tools and support for all stages of the research data management process





Research Data Service

Providing a suite of tools and support for all stages of the research data management process



Looking for specific advice and support? Contact the Research Data Service team: data-support@ed.ac.uk, tel: 515277



RDM Training



Open, online

- Research Data Management Training (MANTRA)
- Research Data Management & Sharing MOOC (Coursera)



Scheduled workshops (postgrads)

- Creating a data management plan for your grant application
- Managing your research data: why is it important and what should you do?
- Good practice in research data management
- Working with personal & sensitive research data



Bespoke training (academic staff)









Focus: support for DMPs

- 🌱 Awareness raising around DMP requirements and benefits; training available
- 🌱 Devolved & centralised support: reviewing DMPs
 - ~ 41 DMP enquiries answered since August 2016
- 🌱 Sample DMPs (more local the better)
- 🌱 DMPOnline tool, with UoE customisation
- 🌱 *Could be more proactive in conjunction with research office: at start and completion of grant*



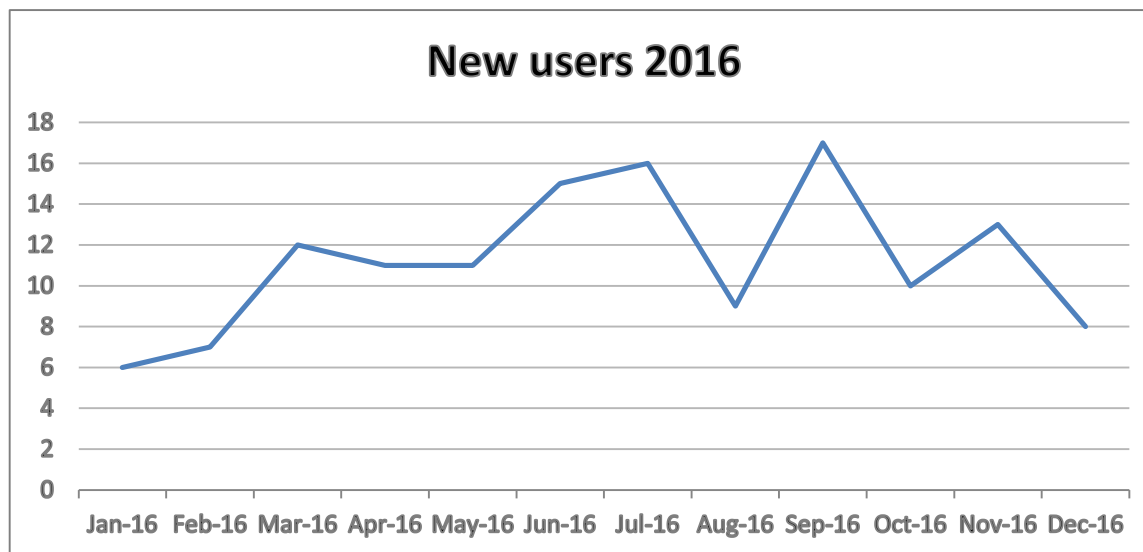
Emphasise benefits over compliance

Eg, Writing DMPs can help you to:

-  Make informed decisions to anticipate & avoid problems.
-  Avoid duplication, data loss and security breaches.
-  Develop procedures early on for consistency.
-  Ensure data are accurate, complete, reliable and secure.
-  Save time and effort to make your lives easier.
-  Plan to share data early on and increase impact.



DMPonline users @ Edinburgh



Total of users in 2015	118
New users 2016	
Jan-16	6
Feb-16	7
Mar-16	12
Apr-16	11
May-16	11
Jun-16	15
Jul-16	16
Aug-16	9
Sep-16	17
Oct-16	10
Nov-16	13
Dec-16	8
Total of users	135

- An average of 11 new users per month
- Peaks in June, July & September
- 14% increase on total users in 2016 compared to previous year

Slide by Sarah Jones, DCC

RESEARCH DATA SERVICE



INFORMATION SERVICES


Deposit data 

How to deposit
Checklist for deposit
Benefits of deposit



Item submission

[Describe](#) [Upload](#) [Review](#) [License](#) [Depositor Agreement](#) [Complete](#)

Type	Date Accessioned
image (1098)	2017 (325)
dataset (622)	2016 (345)
sound (156)	2015 (1077)
... View all	2014 (111)
	2013 (24)
	2012 (44)
	2011 (5)
	2010 (3)

Total Visits

	Views
RCrO3-xNx ChemComm 2016	6758
International Stroke Trial database (version 2)	4771
Database of Dedications to Saints in Medieval Scotland	3807



THE UNIVERSITY of EDINBURGH



Thank you

R.Rice@ed.ac.uk

<http://datablog.is.ed.ac.uk>

