

An unusually rich scuttle fly fauna (Diptera, Phoridae) from north of the Arctic Circle in the Kola Peninsula, N.W. Russia

R. H. L. Disney^{1,†}

¹ Department of Zoology, University of Cambridge, Downing Street, Cambridge, CB2 3EJ, U. K.

[†] <http://zoobank.org/C834B880-232A-4890-9EA7-E604B8F8862D>

Corresponding author: R. H. L. Disney (rhld2@hermes.cam.ac.uk)

Academic editor: Martin Hauser | Received 11 June 2013 | Accepted 20 September 2013 | Published 14 October 2013

<http://zoobank.org/0595F354-6199-4ECE-95CE-8E978389AD85>

Citation: Disney RHL (2013) An unusually rich scuttle fly fauna (Diptera, Phoridae) from north of the Arctic Circle in the Kola Peninsula, N. W. Russia. ZooKeys 342: 45–74. doi: 10.3897/zookeys.342.5772

Abstract

64 species of Phoridae, in 6 genera, are reported from the Kola Peninsula, north of the Arctic Circle. The new species *Megaselia elenae* and *M. kozlovi* are described. 33 species of *Megaselia*, only known from females, are given code numbers. Keys to the species of all the females of *Megaselia* and *Phora* are provided; and also a key to the males European *Megaselia* species with a notopleural cleft.

Keywords

Taxonomy, Phoridae, new species, Kola Peninsula

Introduction

The only published record of scuttle flies (Diptera: Phoridae) from the Kola Peninsula refers to *Megaselia opacicornis* Schmitz parasitizing the pupae of the leaf beetle *Chrysomela lapponica* (L.) (Chrysomelidae) (Disney et al. 2001). The town of Monchegorsk (67°55'N, 32°50'E) is situated north of the Arctic Circle. It is the centre for the smelting of copper and nickel in the Kola Peninsula and is one of the most polluted towns in the Russian Federation (Kozlov et al. 2009; Eeva et al. 2012). During 2009

and 2010 a study of the impact of this pollution on the insect fauna was undertaken (by Dr Mikhail Kozlov (University of Turku). The analysis of the results for all insect families will be reported elsewhere. For this study the samples of Phoridae were sent to me for identification. These samples included 64 species of scuttle flies, of which 3 proved to be undescribed and the females of a further 34 species of *Megaselia* can not be named until linked to their males. One new *Megaselia* (Disney 2011b) and a new species of *Abaristophora* are described elsewhere (Pape et al. 2013). Two new species are described below and females are characterized by means of keys to those of all the species of *Megaselia* and *Phora* obtained.

Materials and methods

Samples were collected in 10 study sites located between 1 km North and 40 km South of Mochegorsk. In 2009 insects were collected in traps baited with dead mice, the trap being described by Ermakov (2010). In 2010 yellow traps (manufactured by Russell IPM) were employed. These traps have the inner walls of the container treated with a contact insecticide. The specimens were preserved in about 70–80% ethanol and subsequently mounted on slides in Berlese Fluid (Disney 2001). This method allows examination of gut contents and whether females are gravid, etc. The samples from the yellow traps exhibited a much higher frequency of damaged specimens than those collected in 2009.

The species

BT refers to specimens caught in the traps baited with dead mice in 2009. 1335 scuttle flies were obtained. YT refers to those caught in the yellow traps in 2010. 344 scuttle flies were trapped. Voucher specimens, including all the type material, are deposited in the University of Cambridge, Museum of Zoology (UCMZ).

The gut contents has been noted for several specimens. Amorphous detrital material is almost certainly derived from carrion fluids.

Abaristophora kolaensis Disney: YT - 1 male. This species has been recently described (Pape et al. 2013).

Anevrina thoracica (Meigen): BT - 2 females. A new record for Russia west of the Urals.

Anevrina unispinosa (Zetterstedt): BT - 155 males, 140 females. The males were 11.6% of the phorids obtained in the traps baited with dead mice and the females were 10.5%. Together they were 22.1%. None were collected in the yellow traps. A new record for Russia west of the Urals. This species has been reared from dead snails (Keilin 1919) and carrion baits, including liver, dead molluscs and earthworms, and from rotting wheat flour, vegetation and mushrooms (Buck 1997, 2001).

Megaselia albiclava Schmitz: BT - 3 males, 10 females. YT - 1 female. None of the females were gravid. One had amorphous detrital material in the gut.

Megaselia basseti Disney: BT - 7 females. YT - 1 male, 13 females. The recognition of this species has recently been clarified (Disney 2011b). About half the females were gravid and some had amorphous detrital material in the gut.

Megaselia breviterga (Lundbeck): BT - 13 females. Some females had amorphous detrital material in the gut, which in one case included a few fungus spores. Gravid females had 5 or 7 eggs. The recognition of this species has been recently clarified (Disney 2012) and its supposed occurrence in the Nearctic Region called into question.

Megaselia cirriventris Schmitz: BT - 1 male. YT - 1 male. This species is prevalent in Greenland. When providing a redescription of this species Schmitz (1958: 482) erroneously synonymised *M. piliventris* Schmitz (1937: 119; a replacement name for *M. pilifera* Schmitz, 1936: 227) with it and then produced a hybrid description (Disney 2004). Both sexes of *M. piliventris* are keyed, and critical features illustrated, by Disney (2009).

Megaselia coccyx Schmitz: YT - 1 male, 1 female.

Megaselia crellini Disney: YT - 1 male. This species belongs to a species complex previously treated as a single species (Disney 2011a).

Megaselia eccoptomera Schmitz: BT - 1 male, 8 females. YT - 2 males, 2 females.

***Megaselia elenae* sp. n.**

<http://zoobank.org/788A81AD-928F-45A6-929D-9B0FCC74CE80>

http://species-id.net/wiki/Megaselia_elenae

Fig. 1

Diagnosis. In the key to the males of the species of the British Isles (Disney 1989) the males will run to couplet 291. At least six other European species will run to this couplet, two of which have been described since this key. However, it belongs to a subgroup of species within those reviewed by Buck and Disney (2001). This subgroup comprises species with a bare mesopleuron, only two bristles on the notopleuron and in front of these a notopleural cleft. This subgroup is keyed below and includes this new species.

Etymology. Named after Elena Zvereva, who asked me to identify the Phoridae obtained in this study.

Description. Male. Frons brown, clearly broader than long, with 50-60 hairs and dense but very fine microtrichia. Supra-antennal bristles (SAs) with the lower pair clearly shorter and less robust than the upper pair. [Note: the right side of frons lacks its antial bristle but has 2 pre-ocellars. The following positions of these bristles is based on the left side]. The antials slightly lower on frons than upper SAs and anterolaterals, which are about level with the latter, and about midway between upper SAs and AL bristles. Pre-ocellars slightly further apart than either is from a mediolateral bristle, which is about the same level on frons. Cheek with 4 bristles and jowl with two. The subglobose postpedicels brown, each with more than 40 subcutaneous pit sensilla (SPS) vesicles which are about 0.01 mm in diameter. Palps yellow, at most a third as broad as postpedicel but slightly longer than breadth of latter, with 6-7 bristles, the most apical being shorter



Figure 1. *Megaselia elenae* sp. n. male, anterior face of hind femur.

than a lower SA but the longest subequal to latter, and as many hairs. Labrum yellowish brown and about half as wide as a postpedicel. Labella coloured as palps but with light brown bands on upper sides towards margins and with very few short spinules below. Thorax brown. Two notopleural bristles and a cleft in front of these, which ends just before reaching a c-shaped ridge across its path. Mesopleuron bare. Scutellum with an anterior pair of small hairs and a posterior pair of bristles. Abdominal tergites brown with small hairs except for clearly longer hairs at rear of T6. Venter brown, and with a few hairs on segments 3–6, those at rear of segment 5 being longer, and those at rear of T6 being clearly the longest. The (damaged) hypopygium is brown, with a pale brown anal tube, which is clearly longer than the length of the dorsal face of the epandrium. Each side of the latter 16–18 hairs, which are longer and stronger anteriorly but are smaller and weaker behind, and with a strong bristles (about 0.13 mm long). The hairs of the proctiger are as long and clearly thicker than hairs of the cerci. The left lobe of the hypandrium is pale grey, about 0.06 mm long, and lacking micritrichia. The right lobe is also pale grey and bare, but is only 0.02 mm long (and only 0.03 mm wide at its base). With 4 rectal papillae. Legs yellowish brown with the hind femora being the darkest and the front legs the more yellowish. Fore tarsus with a posterodorsal hair palisade on segments 1–5 and 5 a little longer than 4. Dorsal hair palisade of mid tibia extends about two thirds of its length. Hairs below basal half of hind femur clearly longer than those of anteroventral row of outer half, which are themselves long (Fig. 1). Hind tibia with 10 differentiated posterodorsal hairs and spinules of apical combs simple. Wings 1.4 mm long. Costal index 0.54 Costal ratios 3.1 : 2.7 : 1. Costal cilia (of section 3) 0.13–0.14 mm long. Hair at base of vein 3 as small as costal cilium at base of costa. With 3 axillary bristles, all shorter than costal cilia. Sc not reaching R1. All veins yellowish grey, with thin veins 4–6 being darkest. Membrane lightly tinged grey (just evident to naked eye when viewed against a white background). Haltere knob yellow.

Type material. Holotype ♂, RUSSIA, Kola Peninsula, near Monchegorsk, in yellow trap, 26.vi–6.vii.2010, M. Kozlov (UCMZ, 17-89).

Megaselia haraldlundii Disney: YT – 1 female.

Megaselia humeralis (Zetterstedt): BT – 1 male. This species parasitizes the pupae of the leaf beetle *Chrysomela lapponica* (Chrysomelidae) (Disney and Zvereva 2008).

Megaselia immodensior Disney: BT – 1 male, 1 female. YT – 1 male. This species is a little variable and the specimens from the Kola Peninsula extend the range of variation a little. For example the costal index of the male is only 0.42, but in the type series it is more than 0.44 (Buck and Disney 2001). The CI of the female from the Kola Peninsula is 0.45 to 0.46.

Megaselia fallobreviseta Disney: BT – 3 females. YT – 5 males, 2 females. This is sibling species of *M. breviseta*. The males are almost indistinguishable but the females of the two species are readily distinguished (Disney 2011b). It has been reared from the caterpillar tents of an ermine moth (*Yponomeuta* sp.) in Germany.

Megaselia fuscovariana (Schmitz): BT – 1 male, 1 female. YT - 1 male, 1 female.

***Megaselia kozlovi* sp. n.**

<http://zoobank.org/33869855-A189-4460-B780-E546125885AD>

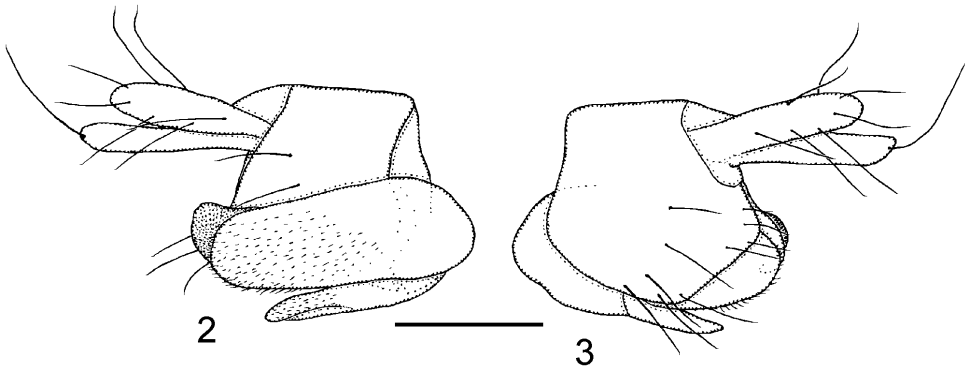
http://species-id.net/wiki/Megaselia_kozlovi

Figs 3–7

Diagnosis. In the key to the males of the species of the British Isles (Disney 1989) the males will run to couplet 245, Lead 1, where one is directed to return to couplet 241. It runs out there to Lead 1, but the species of this lead is covered by a revision of a group of species (Buck and Disney 2001) from which the new species is immediately excluded by having 3, not 2, bristles on the notopleuron. Furthermore, the small anterior pair of hairs on the scutellum contrast with the bristle like anterior scutellars of the species it most resembles in this complex.

Etymology. Named for its collector Mikhail Kozlov.

Description. Male. Frons brown, clearly broader than long, with 30–42 hairs and very dense but very fine microtrichia. Supra-antennal bristles (SAs) unequal, the lower pair being about as long as the longest (apical) bristle of the palp but less robust than it. The antials lower on frons than anterolaterals, and more than twice as far from upper SAs as either is from an AL bristle. Pre-ocellars slightly closer together than either is from a mediolateral bristle, which is very slightly higher on frons. Cheek with 2–3 short bristles and jowl with one long and one short bristle. The subglobose postpedicels brown, without SPS vesicles. Palps yellow, at most a third as broad as postpedicel but about 1.4 times as long as breadth of latter, with 5–8 bristles, 3–4 being long and the rest short, and 1–3 hairs. Labrum pale yellow and about 0.8 times as wide as a postpedicel. Labella a little paler than palps, with only a few short spinules below but with several pale teeth along their inner edges.. Thorax brown. Three notopleural bristles and no cleft in front of these. Mesopleuron bare. Scutellum with an anterior pair of small hairs and a posterior pair of bristles. Abdominal tergites brown with T6 being longest and with longer hairs at its rear margin than on the rest of the tergites. Venter



Figures 2–3. *Megaselia kozlovi* sp. n. male, hypopygium. **2** right face **3** left face. Scale line: 0.1 mm.

grey, and with fine hairs on segments 3–6. Hypopygium brown, with a light brown anal tube, and as Figs 2–3. Legs with yellowish brown hind femora and otherwise dusky yellow (apart from the largely brown mid coxae). Fore tarsus with segments 1–3 somewhat stout and with at least one row of hairs below each reduced to short pale spinules. A posterodorsal hair palisade on segments 1–4 and 5 about as long or slightly shorter than 4. Dorsal hair palisade of mid tibia extends about two thirds its length. Hairs below basal half of hind femur longer than those of anteroventral row of outer half. Hind tibia with 11–12 differentiated posterodorsal hairs and spinules of apical combs simple. Wings 1.3–1.4 mm long. Costal index 0.48–0.50. Costal ratios 3.0–3.6 : 2.0–2.4 : 1. Costal cilia (of section 3) 0.07–0.08 mm long. No hair at base of vein 3. With 2 axillary bristles, the outer being a little longer than costal cilia. Sc not reaching R1. Thick veins and vein 7 yellowish grey, thin veins 4–6 grey. Membrane tinged grey (evident to naked eye when viewed against a white background). Haltere knob yellow.

Female. Head similar to male except palps with 7–8 bristles, the longer ones being a little shorter than those of male, and with 3–7 hairs. Thorax as male. Abdominal tergites brown. T3–T7 as Fig. 4. Venter grey, and with hairs below segments 3–6. Sternite 7 an isosceles triangle tapering to an anterior point and with 4 longer hairs at its straight hind margin and at least as many smaller hairs further forward. The single lobe at rear of sternum 8 as Fig. 6. Cerci and epiproct as Fig. 5. With 4 rectal papillae. Furca not evident. Dufour’s crop mechanism as Fig. 7. Legs similar to male except the front tarsus has segment 1–3 as slender as the rest, segment 5 is a little longer than 4 and 5 may or may not have a posterodorsal hair palisade. Wing as male except 1.4–1.6 mm long. Costal index 0.47–0.49. Costal ratios 2.8–3.9 : 1.5–2.5 : 1. Costal cilia 0.08–0.09 mm long. Otherwise it and haltere as male. Two females were gravid, one with 5 eggs and the other with 6. These eggs measured 0.3–0.4 mm long and 0.16–0.17 mm wide.

Type material. Holotype ♂, RUSSIA, Kola Peninsula, near Monchegorsk, at dead mouse, 18–25.vii.2009, M. Kozlov (UCMZ, 17-40). Paratypes, 2F the same except (17-48 & 72), 1 F, 25.vii–1.viii.2009 (UCMZ, 17-44), 1 male, in yellow trap, 6-16.vii.2010 (UCMZ, 17-83).



Figure 4. *Megaselia kozlovi* sp. n. female, abdominal tergites 3–7.



Figure 5. *Megaselia kozlovi* sp. n. female, tip of abdomen from above.

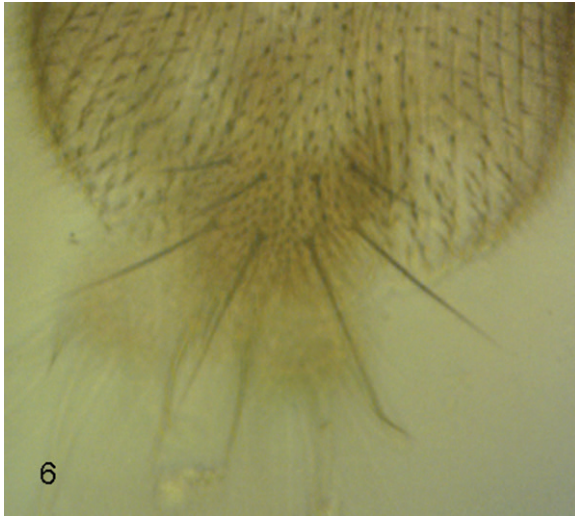


Figure 6. *Megaselia kozlovi* sp. n. female, lobe at rear of abdominal sternite 8.

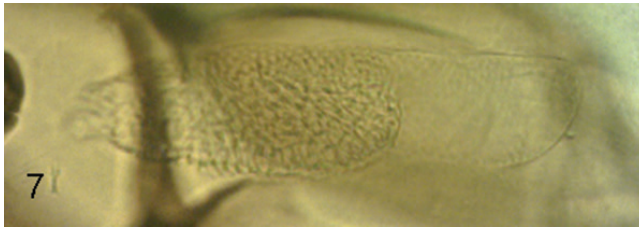


Figure 7. *Megaselia kozlovi* sp. n. female, Dufour's crop mechanism (anterior end to left).

Megaselia limburgensis (Schmitz): YT – 1 male.

Megaselia nudiventris (Wood): YT – 1 male. This species has recently been rescued from synonymy (Disney 2011a).

Megaselia parnassia Disney: BT – 1 male, 10 females. YT – 2 males. A gravid female had 4 eggs (HF = 0.8–0.9 mm long). Some females had amorphous detrital material in the gut, which in two cases included several fungus spores. This is mainly a boreo-alpine species of northern Europe and Canada.

Megaselia petraea Schmitz: BT – 2 males, 12 females. One female was gravid.

Megaselia sordida (Zetterstedt): BT – 744 females, which is 56.3% of the phorids obtained in the traps baited with dead mice. This was the commonest species in the traps. YT – 12 males, 74 females. Thus the males were 3.4% of the phorids obtained in yellow traps and the females were 20.8%. Only a few had amorphous detrital material in the gut. Only a few were gravid. Of these one had 19 eggs, which measured 0.67 mm long and 0.25 mm wide (HF = 1.02 mm long). One had 32 half developed eggs (HF = 0.99 mm long).

The following species are only known in the female sex and are given code numbers only until they can be linked to their males. The sequence of numbers is incomplete as some females were subsequently linked to their males.

Megaselia species 3: BT – 25 females. YT – 3 females. None were gravid but more than 40 immature eggs were recorded. There was no evidence of feeding on carrion fluids.

Megaselia species 4: YT – 1 female.

Megaselia species 5: BT – 30 females. These were 2.2% of phorids caught at dead mice. YT – 94 females, which was 27.3% of the phorids in the yellow traps. None were gravid and one had amorphous detrital material in the gut.

Megaselia species 6: BT – 6 females. One with 2 relatively large eggs, that were 0.74 mm long and 0.28 mm wide (HF = 0.91 mm long). There was no evidence of feeding on carrion fluids.

Megaselia species 7: BT – 2 females. None was gravid and there was no evidence of feeding on carrion fluids.

Megaselia species 8: BT – 11 females. YT – 8 females. None were gravid and there was no evidence of feeding on carrion fluids.

Megaselia species 10: BT – 7 females. YT – 1 female. None were gravid but one had fungus spores in the crop.

Megaselia species 11: BT – 1 female. With amorphous detrital material in the gut.

Megaselia species 12: BT – 1 female. With amorphous detrital material in the gut.

Megaselia species 13: BT – 1 female.

Megaselia species 16: BT – 29 females. YT – 7 females. Most had amorphous detrital material in the gut and in one case this included short, thick walled, fungus bodies. One had 2 mature eggs remaining, the rest of the batch evidently having been deposited.

Megaselia species 17: BT – 2 females.

Megaselia species 18: BT – 5 females. Three with amorphous detrital material in the gut, one of which included a few spindle-shaped fungus spores.

Megaselia species 19: BT – 20 females. Three with amorphous detrital material plus fungus spores in the gut, the spores being round in one case and spindle shaped in two. A few pollen grains were present in guts of two specimens. One with 24 half developed eggs.

Megaselia species 20: BT – 3 females.

Megaselia species 21: BT – 2 females.

Megaselia species 24: BT – 1 female, with dark amorphous material in the gut.

Megaselia species 25: BT – 1 female.

Megaselia species 26: BT – 1 female.

Megaselia species 27: BT – 1 female. With amorphous detrital material in the gut.

Megaselia species 28: BT - 1 female.

Megaselia species 29: BT – 1 female. With amorphous detrital material in the gut.

Megaselia species 30: BT – 1 female. With pollen grains in gut.

Megaselia species 31: BT – 2 females. One was gravid, with 8 eggs which measured 0.51 long and 0.25-0.26 mm wide (HF = 0.90 mm long). The other with amorphous detrital material in the gut.

Megaselia species 33: BT – 2 females. One had a single egg remaining. It measured 0.32 mm long and 0.12 mm wide (HF = 0.49 mm long).

Megaselia species 34: BT – 3 females. One had two eggs remaining, they measured 0.51–0.54 mm long and 0.21–0.23 mm wide (HF = 0.73 mm long). Another had granular material in the gut.

Megaselia species 36: BT – 1 female. With a little amorphous detrital material in the gut.

Megaselia species 37: BT – 1 female. YT – 10 females.

Megaselia species 38: BT – 1 female.

Megaselia species 39: BT – 1 female.

Megaselia species 40: BT – 1 female. The gut had fine amorphous debris. Fungus mycelium was present in the abdomen.

Megaselia species 42: BT – 2 females. Both had fungus spores in the gut. One was gravid. The eggs are 0.99–1.00 mm long and 0.32 mm wide and have a plastron running the length of the dorsal face. There were 14 eggs (HF = 1.21 mm long).

Megaselia species 46: BT – 1 female.

Megaselia species 47: BT – 1 female. There was a single relatively large egg measuring 0.66 mm long and 0.29 mm wide; this egg being longer than the length of the hind femur (at 0.47 mm).

Microselia forsiusi (Schmitz): BT – 1 female. This species was previously only known from Finland.

Concerning the genus *Phora*

The recognition of the species in this genus is based on the males, with particular attention to the hypopygium. In his keys to the Palaearctic species, Schmitz (1953, 1955) divided the species into three groups. Section I species have 2 or 3 anterior bristles on the basal half of the hind tibia. Those of Section II have only 1 such bristle on the hind tibia, and 2 anterior bristles on the basal half of the mid tibia. The species of Section III have only 1 of each of such bristles on the mid and hind tibiae. However, *P. dubia* in Section I (under a synonym, *loc. cit.*, 1955: 342) has 1 or 2 bristles on its hind tibia, and in some specimens there is 1 on one leg and 2 on the other. Likewise *P. stictica* in Section II occasionally has 2 bristles on the hind tibia and only 1 bristle on the mid tibia; and *P. artifrons* in the same section likewise sometimes has only 1 bristle on the mid tibia. Such variation has to be taken into account when trying to match up females with their males. In addition there is evidently some sexual dimorphism in these bristle number differences. For example for some *P. atra* (Meigen) males I have obtained mating there were 4 or 5 dorsal bristles on the mid tibia, but only 2 or 3 on those of their female partners. Furthermore, some males of this species occasionally have 2 anterior bristles on at least one mid tibia; which means they would be in Schmitz's Section II instead of Section III. One specimen attributed to *P. holosericea* has no anterior bristles on the mid tibiae. Other variation occurs with respect to colour, such as the costa, the thin veins and the wing membrane (including the extent of the regions devoid of microtrichia), and the front tibia and tarsus. As none of the females were gravid, apart

from one with immature eggs, some of the paler specimens were probably only recently emerged from their pupae and were not fully darkened. The result of these variations is that females are still poorly known in this genus. However, Cook and Mostovski (2002) have shown the use of 16S mitochondrial sequences in linking unknown females to their correct males, and then correlating these molecular signatures with small morphological differences. In the collections from the Kola Peninsula only five species represented by males were obtained. I have therefore identified the females on the assumption that only these five species needed to be considered. A tentative key to the species of females from the Kola Peninsula is given below.

Phora artifrons Schmitz: YT – 1 male.

Phora dubia (Zetterstedt): BT – 2 females. YT – 1 male, 2 females.

Phora holosericea Schmitz: BT – 41 females, which was 3.1% of the phorids caught at dead mice. YT – 4 males, 83 females. Thus the females were 23.4% of the phorids caught in the yellow traps. Larvae prey upon the root feeding Aphididae and Pemphigidae (Yarkulov, 1972).

Phora pubipes Schmitz: BT – 5 females. YT – 3 males, 1 female. One female had 20 immature eggs (HF = 1.9-2.0 mm long).

Phora stictica Meigen: YT – 2 males, 11 females. These represented 3.7% of the phorids caught in the yellow traps.

Triphleba palposa (Zetterstedt): Bt – 1 female.

The female of this species was only briefly described by Schmitz (1943) and without any figures. The abdominal sternite 7 was described thus “anscheinend gross, an den Seiten weit hinaufreichend”. Figs 8–9 illustrate this.

Triphleba renidens Schmitz: YT – 1 female.

Key to *Megaselia* females of species recorded in the Kola Peninsula

This key provides a preliminary sorting only. Identification requires checking out the details given under the brief description of each species.

Note: Variable species are keyed both ways at several couplets

- 1 Mesopleuron with hairs and sometimes with differentiated bristles near rear margin **2**
- Mesopleuron bare **32**
- 2 With three bristles on the notopleuron **3**
- With two bristles on the notopleuron. (Vein Sc runs into vein 1 and fuses with it. Abdominal tergite 3 with concave hind margin and shorter than both T2 and T4. (Hind femora yellow. Haltere knobs yellow. Scutellum with an anterior pair of hairs and a posterior pair of bristles. Mesopleuron with hairs only) **Species, 30**

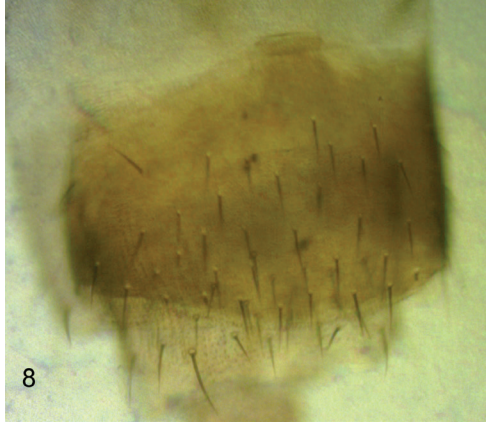


Figure 8. *Tripleba palposa* female, abdominal sternite 7.

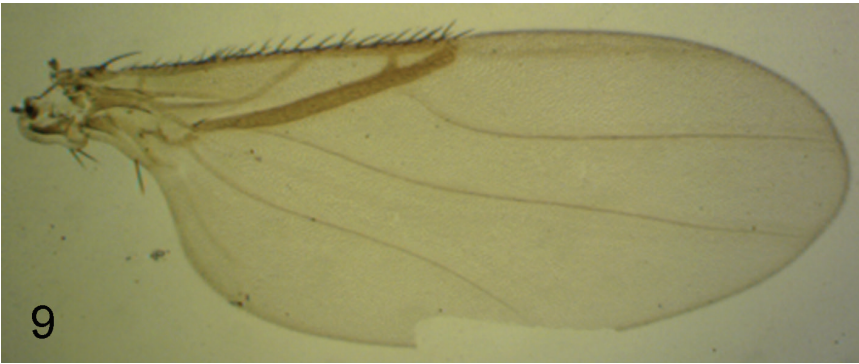


Figure 9. *Tripleba palposa* female, right wing.

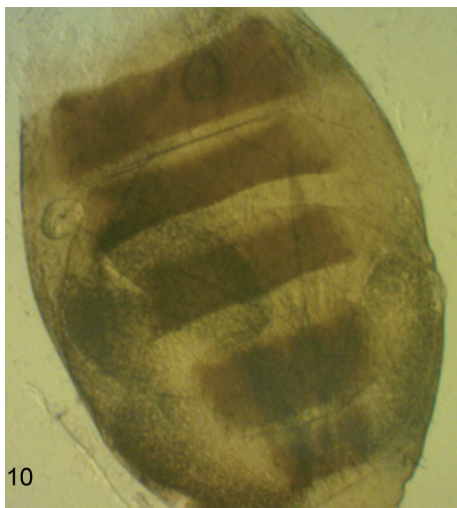


Figure 10. *Megaselia breviterga* female, abdominal tergites 2–6.

3	Vein Sc runs into vein 1 (R1) and fuses with it.....	4
–	Vein Sc ends before reaching vein 1.....	5
4	Scutellum with two pairs of robust bristles, but the anterior pair are shorter than those behind. Palps dusky yellow or brown.....	5
–	Scutellum with an anterior pair of hairs and a posterior pair of bristles. Palps clear yellow.....	Species, 24
5	Haltere knob brown or greyish brown.....	6
–	Haltere knob yellow.....	20
6	Mesopleuron in addition to hairs with one or more short bristles near hind margin.....	7
–	Mesopleuron with hairs only.....	8
7	Scutellum with two pairs of robust bristles, but the anterior pair are shorter than those behind. Palps yellow.....	<i>basseti</i> Disney
–	Scutellum with an anterior pair of hairs and a posterior pair of bristles Palps brown.....	8
8	Palps yellowish brown to brown.....	9
–	Palps yellow.....	10
9	Ventral edge of hind femur slightly concave just beyond base. Wings distinctly grey when viewed against a white background.....	<i>eccoptomera</i> Schmitz
–	Ventral edge of hind femur straight. Wing only faintly grey when viewed against a white background.....	10
10	Hind femora yellow.....	11
–	Hind femora light brown or darker.....	12
11	Scutellum with two pairs of robust bristles, but the anterior pair are shorter than those behind. Cerci about 3× as long as broad.....	20
–	Scutellum with an anterior pair of hairs and a posterior pair of bristles. Cerci less than twice as long as broad.....	Species, 21
12	Base of vein 3 with a hair, which is sometimes minute.....	13
–	No hair at base of vein 3.....	18
13	Scutellum with an anterior pair of hairs and a posterior pair of bristles.....	14
–	Scutellum with two pairs of robust bristles, but the anterior pair are shorter than those behind.....	20
14	The hairs below basal half of hind femur about as long or shorter than those of anteroventral row in outer half.....	15
–	Some of these hairs clearly longer than hairs of anteroventral row in outer half.....	Species, 49
15	The lower faces of labella with only a few short spinules.....	16
–	Lower faces of labella with numerous short spinules (at least 40 on each).....	Species, 36
16	The costal cilia of section 3 clearly longer than outermost axillary bristle ...	17
–	The costal cilia of section 3 about as long as outermost axillary bristle.....	20
17	Costa less than half length of wing.....	18
–	Costa more than half length of wing.....	20

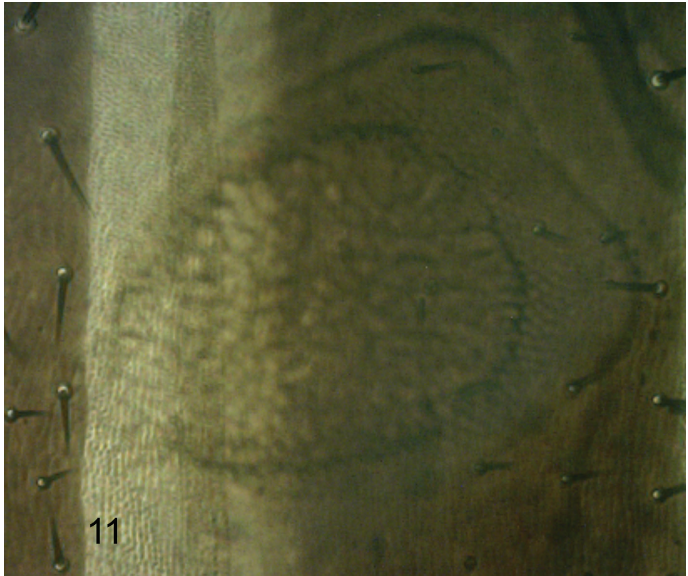


Figure 11. *Megaselia breviterga* female, Dufour's crop mechanism (anterior end to left).

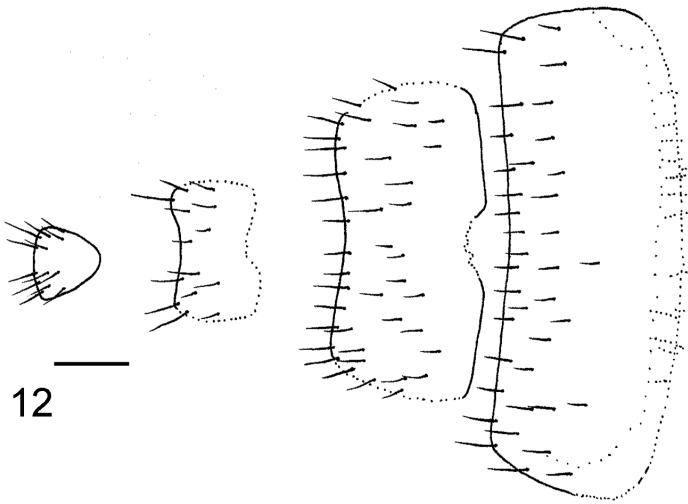
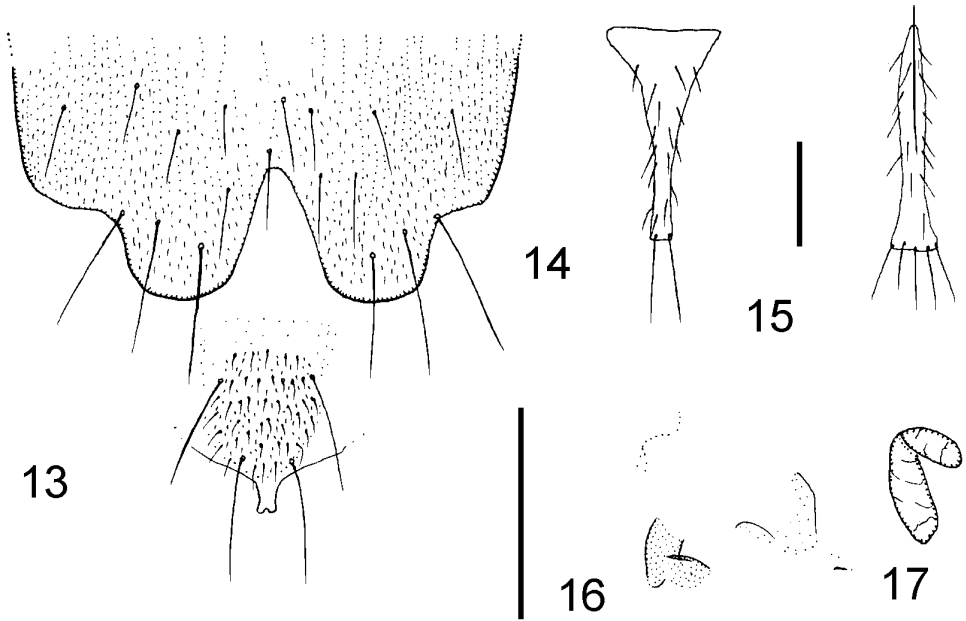


Figure 12. *Megaselia cirriventris* female, abdominal tergites 5–8.

- 18 Mesopleuron with hairs only gradually increasing in size towards rear margin... **19**
- Mesopleuron with small hairs contrasting strongly with the single bristle at rear margin. (Abdominal tergites 5 to 8 as Fig. 10)*cirriventris* **Schmitz**
- 19 With more than 3 bristles on axillary ridge of wing. Labrum brown and wider than diameter of postpedicel..... **Species, 5**
- With only 2 axillary bristles. Labrum pale yellow and not as wide as postpedicel..
- **Species, 13**

- 20 Scutellum with two pairs of robust bristles, but the anterior pair are shorter than those behind **1**
- Scutellum with an anterior pair of hairs and a posterior pair of bristles (or rarely with a single pair of bristles only) **23**
- 21 Wing more than 2.5 mm long and costa extends at least half the length of wing **22**
- Wing less than 2.5 mm long and costa less than half length of wing **24**
- 22 Hind femora yellow with brown tips and hairs below basal halves clearly longer than those of anteroventral rows in outer halves **Species, 39**
- Hind femora pale chestnut brown and the hairs below basal halves clearly shorter than those of anteroventral rows in outer halves **Species, 16**
- 23 Hind femora yellow or yellow with brown tips, or shading to brown in outer half **24**
- Hind femora uniformly brown **26**
- Note. Variable species are keyed both ways.
- 24 Hind femora with at least their tips brown. Axillary ridge with at least four bristles. Vein 3 with a hair at base, but it may be very small (and occasionally absent) **25**
- Hind femora entirely yellow. Axillary ridge of wing with fewer than four bristles. No hair at base of vein 3. (Postpedicels yellowish grey. Labella large, pale and with numerous microtrichia and small spinules below) **Species, 34**
- 25 With at most 6 axillary bristles. Hairs below basal halves of hind femora shorter than those in anteroventral rows of outer halves **26**
- With more than 6 axillary bristles. Hairs below basal halves of hind femora about as long as those in anteroventral rows of outer halves **Species, 26**
- 26 Lower faces and apical lateral regions of labella with relatively few short spinules (less than 20 below each) **27**
- Lower faces and apical lateral regions of labella with numerous short spinules (at least 30 on each) **29**
- 27 Hind femora entirely brown **28**
- Hind femora yellow with brown tips. (Postpedicels with SPS vesicles. Labrum yellow. DCM with narrow posterior region) ***fuscovariana* (Schmitz)**
- 28 Hairs below basal half of hind femur shorter than those of anteroventral row of outer half. Front femora usually almost as dark as mid and hind femora. Labrum typically chestnut brown. Wings lightly tinged grey. DCM narrow, the width being at most a quarter of the length ***sordida* (Ztetterstedt)**
- Hairs below basal half of hind femur at least as long as those of anteroventral row of outer half. Front femora usually distinctly more yellowish brown than mid and hind femora. Labrum yellow to yellowish brown. Wings darker and more yellowish grey. DCM broader, its width being about half its length ***albiclava* Schmitz**
- 29 All femora dark brown. Lower supra-antennal bristles (SAs) longer and more robust than bristles on palps **30**



Figures 13–17. *Megaselia fallobreviseta* female, details of abdomen. **13** rear of sternum 8 and hypoproct **14** tergite 7 **15** sternite 7 **16** furca **17** tubular organ. Scale lines: 0.1mm.

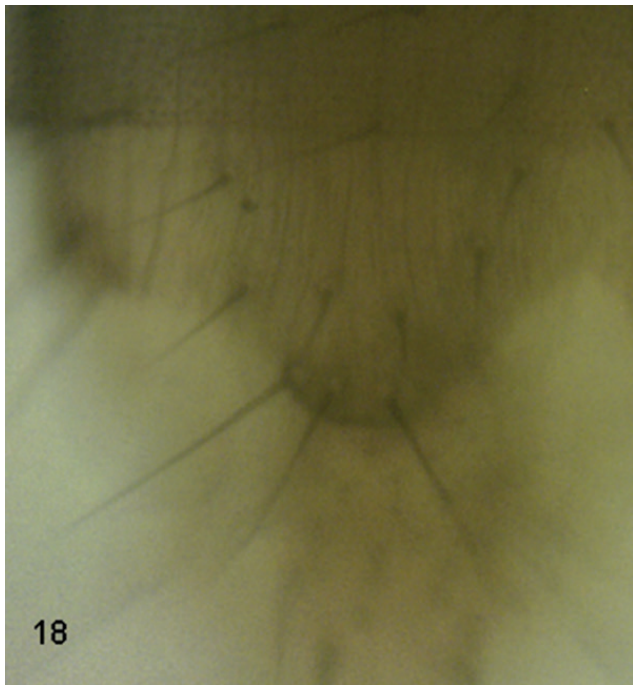
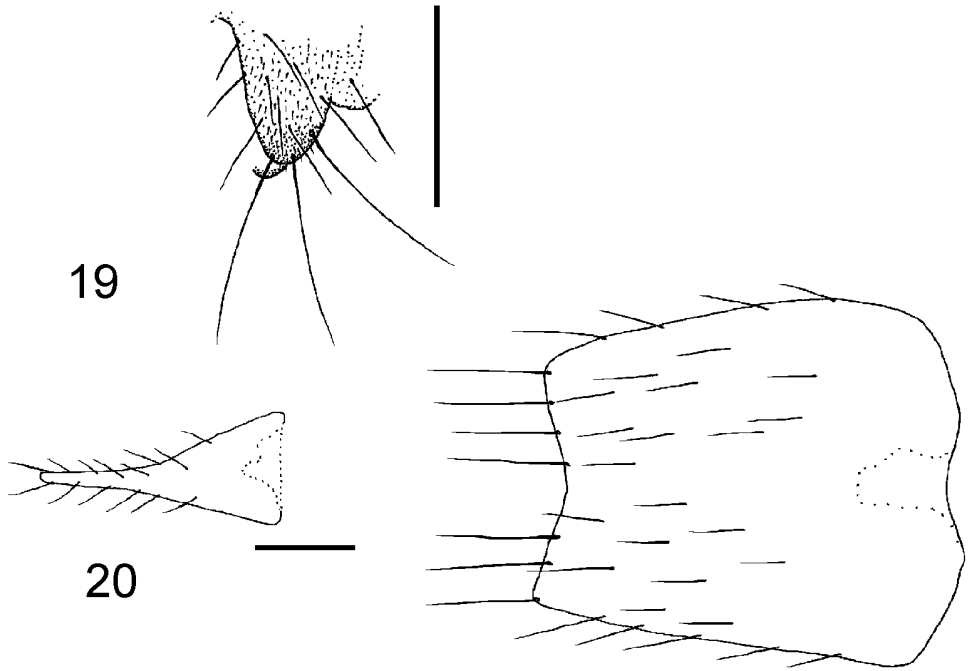


Figure 18. *Megaselia haraldlundii* female, left lobe at rear of abdominal sternum 8.

- Front and middle femora more yellowish brown or paler. Lower SAs shorter and less robust than bristles on palps **31**
- 30 Palps clear yellow. Abdominal tergite 7 broader than long **coccyx Schmitz**
- Palps yellowish brown. T7 clearly longer than broad **Species 37**
- 31 Costal cilia (of section 3) less than 0.12 mm long. Sc almost always reaching vein 1..... **limburgensis (Schmitz)**
- Costal cilia more than 0.12 mm long. Sc clearly ending before vein 1... **Species, 8**
- 32 Vein Sc runs into vein 1 (R1) and fuses with it..... **33**
- Vein Sc ends before reaching vein 1 **45**
- 33 Hind femora brown and haltere knob brown or if a little yellowish the hind femora are clearly brown..... **34**
- Hind femora yellowish brown to yellow with brown tip and haltere knob yellow, but when a little dusky the hind femora are mainly yellow..... **40**
- 34 Notopleuron with three bristles **35**
- Notopleuron with only two bristles **36**
- 35 Scutellum with an anterior pair of hairs (subequal to those near rear of scutum) and a posterior pair of robust bristles. Abdominal tergite 2, apart from anterolateral processes, clearly narrower than T1 and with a concave hind margin. T3 with its front margin narrower than its hind margin, T7 a Y shape and clearly narrower than T6 **Species, 11**
- Scutellum with four robust bristles. T2 a little wider than T1 and with a straight hind margin. T3 with front margin slightly wider than hind margin. T7 broader than long and wider than T6. (T6 is longer than broad) **Species, 42**
- 36 Scutellum with four robust bristles **37**
- Scutellum with a posterior pair of robust bristles and an anterior pair of hairs (at most subequal to those near rear of scutum or rarely absent) **38**
- 37 Abdominal tergite 6 longer than greatest breadth and its rear margin is narrower than the front margin of T7. The outermost axillary bristles are longer than the costal cilia of costal section 3. DCM rounded behind ... **Species, 42**
- T6 clearly broader than long and wider than the narrow T7. The outermost axillary bristles are shorter than the costal cilia of section 3. DCM bilobed behind **Species, 38**
- 38 Cerci at least 2.5× as long as broad. Lobes at rear of abdominal sternum 8 short and broader than long..... **39**
- Cerci at most twice as long as broad. The lobes at rear of S8 at least 3× as long as broad **Species, 12**
- 39 Abdominal tergite 7 broad, its greatest width being about half that of rear margin of T6 **Species, 46**
- T7 narrow, being at its widest at most only a third as wide as rear margin of T6 **petraea Schmitz**
- 40 Scutellum with a posterior pair of robust bristles and an anterior pair of hairs (at most subequal to those near rear of scutum or rarely absent) **41**



Figures 19–20. *Megaselina humeralis* female details of abdomen. **19** right lobe at rear of sternum 8 **20** tergites 6 and 7.

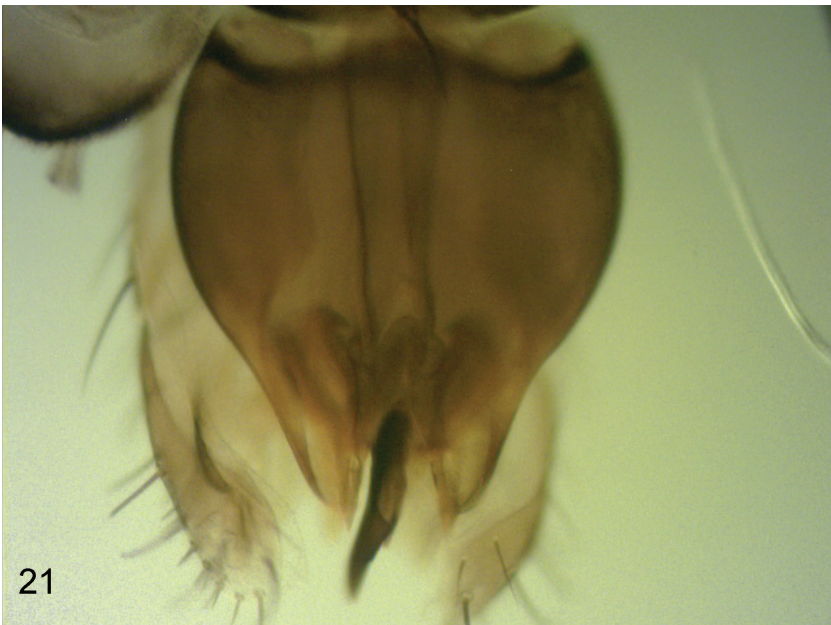


Figure 21. *Megaselina humeralis* female, labrum.

- Scutellum with four robust bristles. (The lobes at rear of S8 taper to a point. Abdominal tergite 4 not as wide as front margin of 3) **Species, 28**
- 41 Wing more than 1.6 mm long **42**
- Wing less than 1.5 mm long (its membrane pale and likewise veins 4–6) ... **45**
- 42 Abdominal tergite 3 with a more-or-less straight hind margin and at least as long as T4..... **43**
- T3 with a concave hind margin and typically shorter than T4 (Fig. 10). (Dufour’s crop mechanism as Fig. 11)..... *breviterga* (**Lundbeck**)
- 43 Cerci with rounded tips. Hypoproct with small denticles as well as the larger microtrichia **44**
- Cerci tapered towards tips. Hypoproct lacks small denticles. (S8 lobes symmetrical so that their rounded tips are directed rearwards) **Species, 7**
- 44 Hairs below basal half of hind femur clearly longer than adjacent hairs of anterior face. Postpedicels with SPS vesicles. (Lobes of abdominal sternite 8 asymmetrical and with the sides longer than the inner edges, so that the tips are inclined towards the midline)..... **Species, 19**
- Hairs below basal half of hind femur about as long or only slightly longer than adjacent hairs of anterior face. Postpedicels without SPS vesicles **Species, 4**
- 45 Scutellum with four robust bristles, but the anterior pair may be a little shorter and less robust than those behind **46**
- Scutellum with a posterior pair of robust bristles and an anterior pair of hairs (at most subequal to those near rear of scutum or rarely absent) **54**
- 46 Abdominal sternite 7 a narrow bar that is narrowest at the rear end where it bears a single bristle. The lobes at the rear of sternum 8 are rounded with dusky bare rims beyond the bristles..... **Species, 20**
- Without this combination **47**
- 47 All femora yellow or dusky yellow apart from brown tips to hind femora ... **48**
- All femora essentially brown to dark brown **51**
- 48 Abdominal tergite 6 longer than broad (Fig. 20). Posterodorsals of hind tibia strongly differentiated **49**
- Not so **50**
- 49 Labrum massive (Fig. 21). Postpedicels yellow at base, darker apically and without SPS vesicles. Vein 3 with 1–2 hairs at base. Hairs below basal half of hind femur shorter than those of the anteroventral row in the outer half *humeralis* (**Zetterstedt**)
- Labrum less massive (e.g. Fig. 22). Postpedicels uniformly brown and with SPS vesicles. Vein 3 with minute hair (shorter than width of vein) or without hair. Hairs below hind femur longer than those of a-v row of outer half ... **51**
- 50 With more than 30 hairs on segments 3 to 5 of abdominal venter as well as many on 6, which has longer hairs at rear margin. Furca not evident. Lobes at rear of sternum 8 as Fig. 18. (Costal index exceeds 0.46. Costal cilia of section 3 at least 0.10 mm long) *haraldlundi* **Disney**



Figure 22. *Megaselia parnassia* female, labrum.

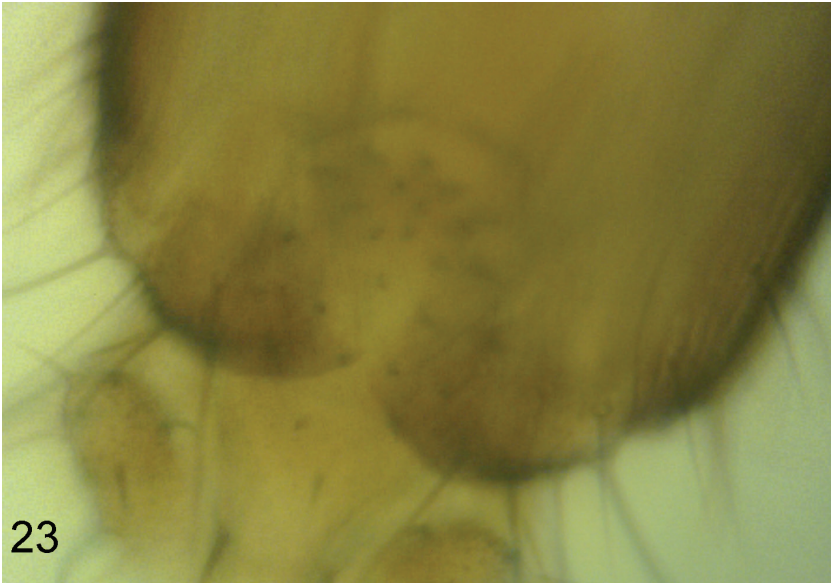


Figure 23. *Megaselia parnassia* female, lobes at rear of abdominal sternum 8.

- With less than 15 hairs on segments 3–5 of venter. A strongly sclerotised furca present (Fig. 25). Lobes at rear of abdominal sternum 8 rounded as Fig. 24 ...
.....**Species, 6**
- 51 Abdominal tergite 7 as Fig. 14. Sternite 7 as Fig. 15. Lobes at rear of S8 and hypoproct as Fig. 13. Internal tubular organ as Fig. 17. Furca as Fig. 16
.....***fallobreviseta* Disney**
- Without these features combined.....**52**
- 52 The S8 lobes, with their bare rounded extremities beyond the most posterior bristles, are pale.....**53**
- The S8 lobes are conspicuously brown (Fig. 23). (Labrum as Fig. 22).....
.....***parnassia* Disney**
- 53 Abdominal tergite 6 clearly broader than long. Arista pale (as palp). Furca absent**Species, 25**
- The greatest breadth and length of T6 subequal. Arista brown. A long, heavily sclerotised, furca present**Species, 29**
- 54 Notopleuron with three bristles (or rarely four)**55**
- Notopleuron with only two bristles**60**
- 55 Cerci short (at most 1.6 times as long as greatest breadth, e.g. Figs 5 and 28) .**56**
- Cerci longer (at least twice as long as wide).....**57**
- 56 Hairs below basal half of hind femur longer than those of the anteroventral row in outer half. A single lobe with many hairs at rear of abdominal sternum 8 (Fig. 6).....***kozlovi* sp. n.**
- Hairs below basal half of hind femur shorter than those of the anteroventral row in outer half. A pair of lobes at rear of S8.....**Species, 18**
Note. This is one possibility for the undescribed female of *M. crellini* Disney, but it is more likely the poorly diagnosed female of *M. nudiventris* (Wood)
- 57 Hind femora brown, even if a little paler in basal halves. Postpedicels and labrum brown.....**58**
- Hind femora yellow with brown tips. Postpedicels yellowish brown. Labrum straw yellow**Species, 3**
Note. This is another possibility for the undescribed female of *M. crellini* Disney
- 58 Knob of haltere yellow.....**59**
- Knob of haltere dark brown. (T6 longer than greatest breadth)**Species, 31**
- 59 Abdominal venter dark grey. Tergite 6 longer than T5. Cerci light brown....
.....**Species, 40**
- Abdominal venter light grey. T6 at most as long as T5. Cerci whitish yellow .
.....**Species, 27**
Note. If neither applies and hairs below basal half of hind femur are shorter than those of the anteroventral hairs of outer half try couplet 50, lead 2.
- 60 Haltere knob yellow. Postpedicels lack SPS vesicles. Hind femur yellow with brown tip and hairs below basal half of hind femur are longer than those of the anteroventral hairs of outer half. With a strongly sclerotised furca

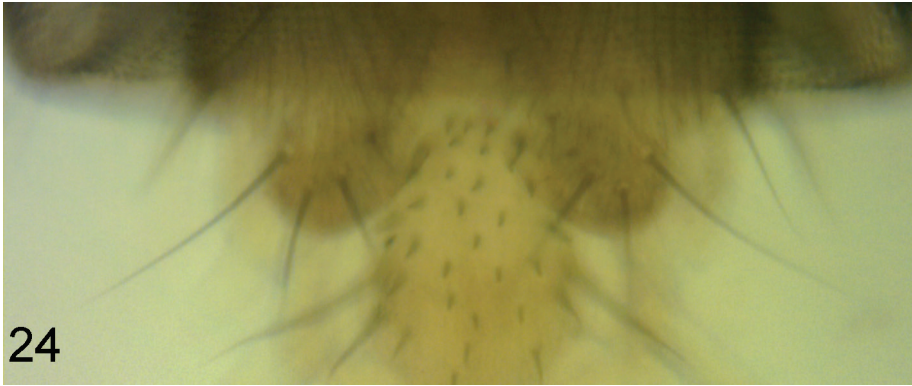


Figure 24. *Megaselia* Species 6, female, lobes at rear of abdominal sternum 8.

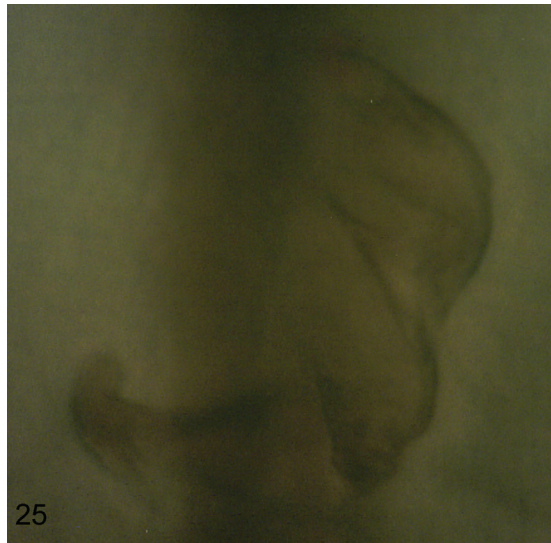


Figure 25. *Megaselia* Species 6, female, furca.

- (Fig. 26). (Lobes at rear of sternum 8 as Fig. 27. Costal index less than 0.45 and costal cilia less than 0.10 mm long)..... **Species, 17**
- Without this combination **61**
- Note. If it agrees except it lacks such a furca return to couplet 50, as *M. haraldlundii* sometimes has its anterior scutellars only 0.6 times as long as the posterior pair.
- 61 Haltere knob brown. Postpedicels lack SPS vesicles **62**
- Haltere knob yellow. Postpedicels with SPS vesicles..... **63**
- 62 Palps and labrum brown and cerci pale brown. (T6 with maximum width greater than length. Venter light grey. Front femora yellowish brown)..... **Species, 10**
- Palps, labrum and cerci pale yellow (Upper supra-antennal bristles further apart than pre-ocellar bristles) **Species, 33**

- 63 Cercus less than 3 times as long as broad. Apical bristles of palp longer than glossa **64**
- Cercus more than 4 times as long as broad. Apical bristles of palp shorter than glossa *immodensior* **Disney**
Note. The unknown female of *M. elenae* sp. n. will run to this lead.
- 64 At least mid and hind femora brown. Wing length more than 1.8 mm. Costal cilia more than 0.13 mm long. Lobes at rear of abdominal sternum 8 with 3 bristles **Species, 2**
- All femora yellow. Wing length less than 1.5 mm and costal cilia less than 0.12 mm long. Lobes at rear of S8 with only 2 bristles..... **Species, 47**

Key to the males of European species of *Megaselia* with a notopleural cleft

Fig. 29 depicts the notopleural cleft of *M. giraudii*. Reference to most figures are in D (Disney 1989) or in B (Buck and Disney 2001) unless indicated otherwise.

- 1 Thorax brown **2**
- Thorax yellow. (Hypopygium as B figs 15 and 16. Hind femur yellow with brown tip) *hexanophila* **Buck**
- 2 Halteres entirely brown..... **3**
- Haltere knob pale yellow **5**
- 3 Palps brown and labella with only a few small spinules below **4**
- Palps yellow and labella with numerous, densely crowded, small spinules below. (Hypopygium as D fig. 380) *hendersoni* **Disney**
- 4 Hypopygium as D fig. 494. Costa clearly less than half wing length. Postpedicels lack SPS vesicles..... *subnudipennis* (**Schmitz**)
- Hypopygium as Fig. 30. Costa about half wing length. Postpedicels with SPS vesicles..... *prodroma* (**Lundbeck**)
- 5 Hind femora brown..... **6**
- Hind femora yellow with brown tips. (Hypopygium as Fig. D fig. 393. Palps with short bristles and as B fig. 1) *malhamensis* **Disney**
Note: *M. intermedia* (Santos Abréu), only known from the Canary Islands, will run down here. Its hypopygium (Fig. 37 in Disney et al. 2010) will immediately distinguish it from *M. malhamensis*.
- 6 Postpedicels with SPS vesicles **7**
- Postpedicels without SPS vesicles. (Hypopygium as D fig. 437. Upper supra-antennal bristles clearly wider apart than pre-ocellars (D fig. 432. Palps brown) Front coxae partly yellow) *minuta* (**Aldrich**)
- 7 Labella densely spinose below (each with more than 80 small spinules). Postpedicels with at most a dozen SPS vesicles **8**
- Labella with many fewer spinules (less than 50 on each). Postpedicels more than a dozen SPS vesicles **9**



Figure 26. *Megaselia* Species 17, female, furca.



Figure 27. *Megaselia* Species 17, female, left lobe at rear of abdominal sternum 8.

- 8 Notopleural cleft ends behind where it encounters a curved dorsoventral ridge (as Fig. 29). Hypopygium as D fig. 397, each circus having more than 10 hairs.....**albicans (Wood)**
- Notopleural cleft does not end behind by encountering such a ridge. Hypopygium as B fig. 19, each cercus having fewer than 10 hairs **offuscata (Schmitz)**
Note. The unknown male of *M. septentrionalis* may key out here, if it has a notopleural cleft.
- 9 Cerci at least twice as long as broad (B fig. 17 and D fig. 400). Wing with at least 3 axillary bristles and costal cilia (of section 3) more than 0.1 mm long **10**
- Cerci clearly less than twice as long as broad (D fig. 446). With only 2 axillary bristles and costal cilia less than 0.1 mm long **brevicostalis (Wood)**
- 10 Left lobe of hypandrium with numerous microtrichia (D figs 400 and B 17) **11**
- Left lobe of hypandrium lacks microtrichia..... **elenae sp. n.**
- 11 Hypopygium as D fig. 400, the left hypandrial lobe being tinged brown and the microtrichia below proctiger tend to be recurved forwards.... **parnassia Disney**
- Hypopygium as B fig. 17, the left hypandrial lobe being pale and the microtrichia below proctiger being semi-erect and pointing rearwards.....**giraudii (Egger)**

Tentative key to *Phora* females of species recorded in the Kola Peninsula

- 1 Basal half of mid tibia with two anterior bristles. Wing length more than 2.4 mm..... **2**
- Basal half of mid tibia with only one anterior bristle (very rarely with none). Wing length less than 2.4 mm **4**
- 2 Hind tibia with a single anterodorsal bristle in basal half **3**
- At least one hind tibia with two anterodorsal bristles in basal half..... **dubia (Zetterstedt)**
- 3 Costal cilia at level of tip of vein 1 at most two thirds the length of axillary bristles. Segments 2–5 of front tarsus relatively stout **stictica Meigen**
- Costal cilia at level of tip of vein 1 at least four fifths the length of axillary bristles. Segments 2–5 of front tarsus not so stout.....**artifrons Schmitz**
- 4 The separation of the females of *P. pubipes* Schmitz and *P. holosericea* Schmitz has been based on minute differences in the distribution of microtrichia on the hind trochanters and microsculpture on the hind femora. However, there are probably better differences in the proboscis. At present I only have two poor females of *P. holosericea* that were procured mating with males. Until better voucher specimens of both species, and other species of *Phora*, are available for both these species reliable differences cannot be proposed with any confidence. Apart from mating pairs, reared series or specimens for which molecular barcodes have been determined are required.



Figure 28. *Megaselia* Species 18, female, cerci from above.

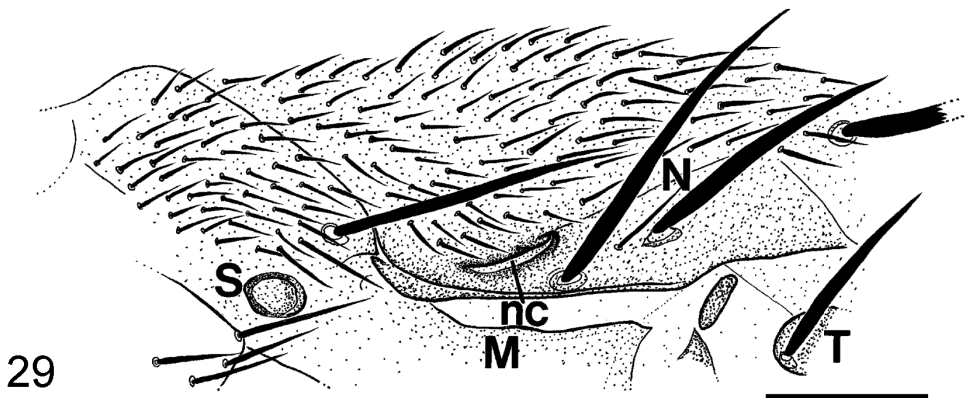
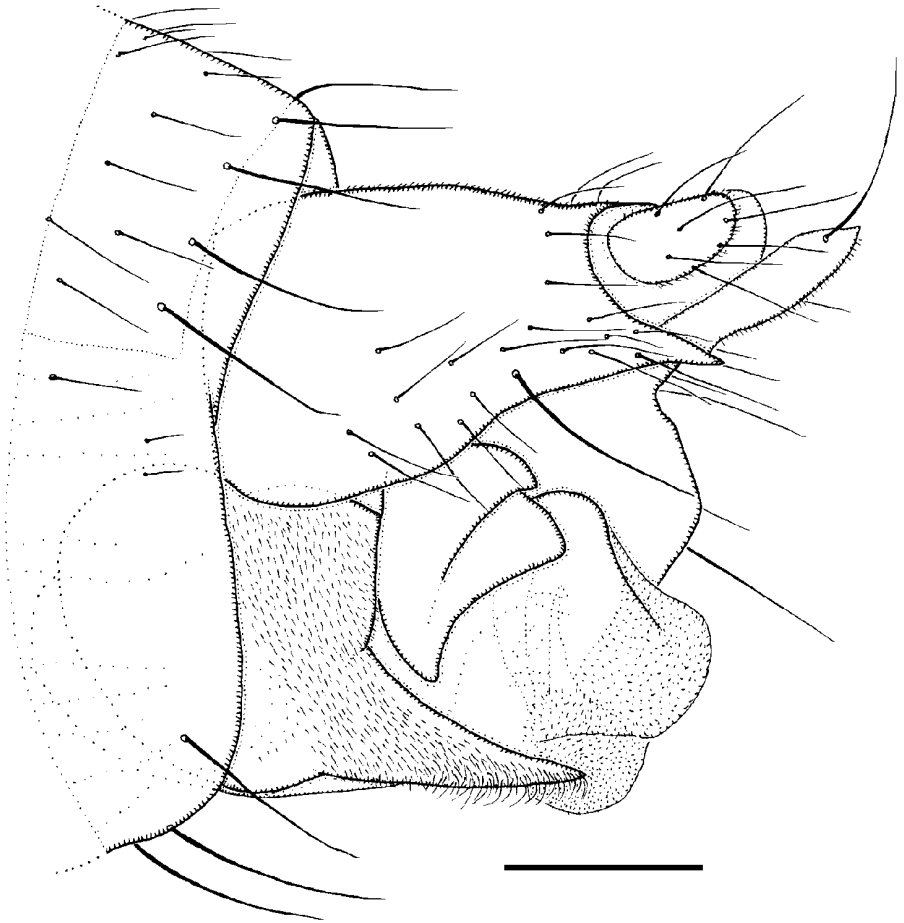


Figure 29. *Megaselia giraudii* male, left notopleuron (nc = notopleural cleft M= mesopleuron, n = notopleural bristles S= anterior spiracle T= tegula at base of wing).



30

Figure 30. *Megaselia prodroma* male, left face of hypopygium. Scale line: 0.1 mm.

Discussion

The number species recorded above is far larger than expected. Only six species are known to occur in Greenland, with only three established north of the Arctic Circle (Disney, in press). For Iceland, which lies immediately south of the Arctic Circle, 11 species have been recorded (Prescher et al. 2005). For the British Isles more than 340 species have been recorded so far, with at least 80 of these being recorded in my suburban garden in Cambridge. In the Antarctic one species being accidentally introduced by man has been reported (Nickolls and Disney 2001) and a second species introduced by man has become established on islands in the South Atlantic Ocean to the north of the Antarctic Circle (Hänel and Disney 2006, Jones et al. 2003). It would seem that the impoverished faunas of these situations is due more to their remoteness than to their high latitudes. By contrast the Kola Peninsula is attached to the mainland of Europe.

Acknowledgements

The specimens were collected within the frameworks of the project 124152 supported by the Academy of Finland. My studies of Phoridae are currently supported by grants from the Balfour-Browne Trust Fund (University of Cambridge) and the Systematics Research Fund of the Linnean Society and the Systematics Association (UK).

References

- Buck M (1997) Untersuchungen zur ökologischen Einnischung saprophager Dipteren unter besonderer Berücksichtigung der Phoridae und Sphaeroceridae (Brachycera/Cyclorhapha). Cuvillier Verlag, Göttingen. [Doctoral Thesis, Universität Ulm]
- Buck M (2001) Protogyny, protandry, and bimodal emergence patterns in necrophagous Diptera. *The Canadian Entomologist* 133: 521–531. doi: 10.4039/Ent133521-4
- Buck M, Disney RHL (2001) Revision of the *Megaselia giraudii* and *M. densior* species complexes of Europe, including ecological notes (Diptera, Phoridae). *Beiträge zur Entomologie* 51: 73–154.
- Colyer CN (1957) A new species of *Plastophora* (Dipt., Phoridae) from England; a short discussion of the evolution of the present concept of the genus and a key to the identification of the world species. *Broteria* 46: 75–89.
- Colyer CN, Elberg K (1969) New data on Phoridae (Diptera). *Eesti NSV Teaduste Akadeemia Toimetised (Biologia)* 18: 154–169.
- Cook CE, Mostovski MB (2002) 16S mitochondrial sequences associate morphologically dissimilar males and females of the family Phoridae (Diptera). *Biological Journal of the Linnean Society* 77: 267–273. doi: 10.1046/j.1095-8312.2002.00109.x
- Brown BV (1995) Review of the species of *Anevrina* Lioy (Diptera: Phoridae), with a new species and a revised world key. *Entomological Problems* 25(2): 1–10 (1994).
- Disney RHL (1987) A new species of *Triphleba* from Spain and two new synonyms in this genus (Dipt., Phoridae). *Entomologist's Monthly Magazine* 123: 191–194.
- Disney RHL (1989) Scuttle Flies - Diptera Phoridae Genus *Megaselia*. *Handbooks for the Identification of British Insects* 10(8): 1–155.
- Disney RHL (2001) The preservation of small Diptera. *Entomologist's Monthly Magazine* 137: 155–159.
- Disney RHL (2004) Rescue of *Megaselia piliventris* (Schmitz) (Dipt., Phoridae) from synonymy. *Entomologist's Monthly Magazine* 140: 27–29.
- Disney RHL (2009) Insects of Arabia scuttle flies (Diptera: Phoridae) Part II: the genus *Megaselia*. In: Krupp F (Ed) *Fauna of Arabia* 24. Senckenbergische Naturforschende Gesellschaft, Frankfurt a. M, Germany and King Abdulaziz City for Science and Technology, Riyadh, Kingdom of Saudi Arabia, 249–357.
- Disney RHL (2011a) A new sibling species of *Megaselia discreta* (Wood) (Dipt., Phoridae) from the British Isles. *Entomologist's Monthly Magazine* 147: 55–60.

- Disney RHL (2011b) A newly recognised sibling species of *Megaselia breviseta* (Wood) (Dipt., Phoridae) from Germany. *Entomologist's Monthly Magazine* 147: 61–68.
- Disney RHL (2011c) A new sibling species of *Megaselia spinigera* (Wood) (Dipt., Phoridae) from Europe. *Entomologist's Monthly Magazine* 147: 81–87.
- Disney RHL (2011d) A new species of *Megaselia* Rondani (Dipt., Phoridae) from Finland. *Entomologist's Monthly Magazine* 147: 49–53.
- Disney RHL (2012) Revisionary notes on Palaearctic and Nearctic Phoridae (Dipt.). *Entomologist's Monthly Magazine* 148: 217–226
- Disney RHL (in press) Diptera Phoridae (Scuttle Flies). In: Böcher J, Kristensen NP, Lyneborg L, Michelsen V, Pape T, Vilhelmsen L (Eds) Identification handbook of the Greenland entomofauna. Copenhagen.
- Disney RHL, Chapman JW (2001) A scuttle fly (Diptera: Phoridae) new to Britain caught in a net suspended 200 metres above the ground. *British Journal of Entomology and Natural History* 14: 39–43.
- Disney RHL, Prescher S, Assmole NP (2010) Scuttle flies (Diptera: Phoridae) of the Canary Islands. *Journal of Natural History* 44: 107–218. doi: 10.1080/00222930903371813
- Disney RHL, Zvereva EL, Mostovski MB (2001) A scuttle fly (Diptera: Phoridae) parasitizing a beetle (Coleoptera: Chrysomelidae) in Russia. *Entomologica Fennica* 12: 59–63.
- Eeva T, Belskii E, Gilyazov AS, Kozlov MV (2012) Pollution impacts on bird population density and species diversity at four non-ferrous smelter sites. *Biological Conservation* 150: 33–41. doi: 10.1016/j.biocon.2012.03.004
- Ermakov AI (2010) Structure and functional activity of necrophagous invertebrates in industrially polluted environments. In: Lozovskaya MV (Ed) Man and animals. Materials of 5th International scientific and practical conference (Astrakhan, 14–16 May 2010). Astrakhan State University, Astrakhan, 48–53. [in Russian]
- Gori M (1999) I foridi della collezione Rondani (Diptera Phoridae). *Bollettino della Società Entomologica Italiana* 131: 139–146.
- Gori M (2000) Due nuove specie di foridi Italiani: *Billotia papii* n. sp. e *Triphleba ausoniae* n. sp. (Diptera Phoridae). *Bollettino della Società Entomologica Italiana* 132: 175–180.
- Hänel C, Disney RHL (2006) Phoridae (Dipt.) from Nightingale Island, South Atlantic. *Entomologist's Monthly Magazine* 142: 127–128.
- Jones AG, Chown SL, Webb TJ, Gaston KJ (2003) The free-living pterygote insects of Gough Island, South Atlantic Ocean. *Systematics and Biodiversity* 1: 213–273. doi: 10.1017/S1477200003001142
- Kozlov MV, Zvereva EL, Zverev VE (2009) Impacts of point polluters on terrestrial biota: Comparative analysis of 18 contaminated areas. Springer, Dordrecht, XVII+466 pp. ISBN: 978-90-481-2466-4
- Nickolls P, Disney RHL (2001) Flies discovered at Casey station. *Australian Antarctic Magazine* 1: 54.
- Pape T, Ulefors S-O, Disney RHL (2013) *Abaristophora arctophila* Schmitz, 1927: confirmation from Europe, description of female, and lectotype designation, and description of a new species from NWRussia (Diptera: Phoridae). *Zootaxa* 3681: 249–256. doi: 10.11646/zootaxa.3681.3.4

- Prescher S, Bonet J, Tschirnhaus M von (2005) New records of scuttle flies (Diptera: Phoridae) from Iceland, with a survey of all simultaneously collected Dipteran families. *Entomologica Fennica* 16: 237–245.
- Schmitz H (1936) Phoriden von der fransoesich-spanischen Grenze bei Hendaya. *Tijdschrift voor Entomologie* 79: 222–229.
- Schmitz H (1943) Phoridae. In: Lindner E (Ed) *Die Fliegen der palaearktischen Region* 4(33) (Lieferung 147, 149), E Schweizerbart'sche Verlagsbuchhandlung, Stuttgart, 129–192.
- Schmitz H (1953) Phoridae. In: Lindner E (Ed) *Die Fliegen der palaearktischen Region* 4(33) (Lieferung 171), E Schweizerbart'sche Verlagsbuchhandlung, Stuttgart, 273–320.
- Schmitz H (1955) Phoridae. In: Lindner E (Ed) *Die Fliegen der palaearktischen Region* 4(33) (Lieferung 180), E Schweizerbart'sche Verlagsbuchhandlung, Stuttgart, 321–368.
- Schmitz H (1956) Phoridae. In: Lindner E (Ed) *Die Fliegen der palaearktischen Region* 4(33) (Lieferung 187), E Schweizerbart'sche Verlagsbuchhandlung, Stuttgart, 369–416.
- Schmitz H (1958) Phoridae. In: Lindner E (Ed) *Die Fliegen der palaearktischen Region* 4(33), (Lieferung 202), E Schweizerbart'sche Verlagsbuchhandlung, Stuttgart, 465–512.
- Smith PT, Brown BV (2010) A molecular phylogenetic analysis of genus *Anevrina* (Diptera: Phoridae), with the description of a new species and updated world key. *Zootaxa* 2397: 29–40.
- Wood JH (1908) On the British species of *Phora* (Part II). *Entomologist's Monthly Magazine* 44:164–174, 215–218, 253–254.
- Yarkulov F (1972) Mukha-gorbatka *Phora holosericea* (Diptera, Phoridae). khishchnik korneykh tley [The scuttle fly *Phora holosericea* (Diptera, Phoridae) – a predator of root aphids]. *Zoologicheskii Zhurnal* 51: 1415–1418.