

Perlesta ephelida, a new Nearctic stonefly species (Plecoptera, Perlidae)

Scott A. Grubbs^{1†}, R. Edward DeWalt^{2‡}

1 Department of Biology and Center for Biodiversity Studies, Western Kentucky University, Bowling Green, KY 42101 USA **2** University of Illinois, Prairie Research Institute, Illinois Natural History Survey, 1816 S Oak St., Champaign, IL 61820 USA

† [urn:lsid:zoobank.org:author:249E192C-5D94-414F-BD08-454913B47C97](https://doi.org/urn:lsid:zoobank.org:author:249E192C-5D94-414F-BD08-454913B47C97)

‡ [urn:lsid:zoobank.org:author:6140264D-C2B4-4AAA-8517-DB31958648C2](https://doi.org/urn:lsid:zoobank.org:author:6140264D-C2B4-4AAA-8517-DB31958648C2)

Corresponding author: Scott A. Grubbs (scott.grubbs@wku.edu)

Academic editor: Terry Erwin | Received 19 February 2012 | Accepted 9 May 2012 | Published 17 May 2012

[urn:lsid:zoobank.org:pub:FCAD4524-5983-4D2B-AD08-BECC7121C812](https://doi.org/urn:lsid:zoobank.org:pub:FCAD4524-5983-4D2B-AD08-BECC7121C812)

Citation: Grubbs SA, DeWalt RE (2012) *Perlesta ephelida*, a new Nearctic stonefly species (Plecoptera, Perlidae). ZooKeys 194: 1–15. doi: 10.3897/zookeys.194.2972

Abstract

A new Nearctic species of Perlidae (Insecta, Plecoptera), *Perlesta ephelida* sp. n., is described from the male, female, and egg stages. This species has been previously reported as, or confused with, *P. shubuta* Stark from several central and eastern U.S. states. *Perlesta ephelida* is distinctive from *P. shubuta* and other regional Nearctic congeners mainly according to male genitalic and egg characteristics. *Perlesta ephelida* is a widely-distributed eastern Nearctic species, whereas *P. shubuta* appears to be restricted to a narrow latitudinal belt in the Gulf Coast region from Louisiana east conservatively to the Florida panhandle. The egg of *P. shubuta* is depicted with scanning electron microscopy for the first time.

Keywords

Perlesta, Perlidae, Plecoptera, stonefly, new species

Introduction

Perlesta shubuta Stark (Plecoptera: Perlidae) is a small-bodied, darkly-pigmented stonefly described from southern Mississippi (Stark 1989). This species has since been reported from Alabama (Graves and Ward 2011), Arkansas, Missouri and Oklahoma (Poulton and Stewart 1991), Florida (Ray et al. 2012), Illinois (DeWalt et al. 2001),

Indiana (DeWalt and Grubbs 2011), Iowa (Heimdal et al. 2004), Kentucky (Tarter et al. 2006), Michigan (Grubbs and Bright 2001), North Carolina (Kondratieff et al. 2011), and West Virginia (Tarter and Nelson 2010). In addition, there are unpublished records for Florida (Pescador et al. 2000) and South Carolina (Pescador et al. 2004) as well as material that resemble *P. shubuta* from several additional central and eastern U.S. states obtained via loans or collected by both authors since the mid-1990s.

The male aedeagus of *P. shubuta* bears a thumb-shaped caecum, a common feature for the genus (Stark 2004) and part of the reason why this species is somewhat difficult to identify with complete certainty. The female subgenital plate is likewise similar to other species. Although the morphology of the egg appears to be distinctive (Stark 1989) it has yet to be studied with scanning electron microscopy to reveal fine structural details of the chorion.

The type locality for *P. shubuta* is a sandy-bottom headwater stream. Poulton and Stewart (1991), DeWalt et al. (2001), and Heimdal et al. (2004), however, reported *P. shubuta* from large stream systems. DeWalt and Grubbs (2011) suggested that the Illinois and Indiana specimens they tentatively determined as *P. shubuta* may represent a new species. Stark (1989) and Poulton and Stewart (1991) both commented on “extremely freckled” and “speckled” nymphs, respectively, from the Ozark and Ouachita Mountain region, and the latter authors stated that “...our specimens are tentatively placed under *P. shubuta* and may represent an undescribed species”.

Our material that we only tentatively identified as *P. shubuta* from throughout the central and eastern U.S. has been obtained mainly from larger systems, including low elevation Appalachian Mountain rivers in Alabama, Maryland and West Virginia, and sandy-bottom lowland rivers in Illinois, Indiana and Michigan. Associated nymphs and exuviae obtained through rearings bear a head mask that is freckled to a much greater degree compared to regional congeners. Because of the uncertainty regarding the identity of *P. shubuta* from localities other than at/near the type locality in southern Mississippi, a comparative study was undertaken to examine available material from across the central and eastern U.S.

Materials and methods

Fresh specimens of *P. shubuta* were obtained from eastern Mississippi and western Alabama in May 2011. A visit to the type locality was unsuccessful. Recently collected material of *P. shubuta*, in addition to all specimens determined tentatively as *P. shubuta*, was reexamined with light microscopy to study fine details of the paraprocts, dorsal and lateral aedeagal spinule patterns, and the subgenital plate. Material were obtained from collections from the Bill P. Stark Collection, Mississippi College, Mississippi (BPS), Brigham Young University, Monte L. Bean Museum, Provo, Utah (BYU), Canadian National Collection, Ottawa (CNC), Illinois Natural History Survey, insect collection series, Champaign, Illinois (INHS), Illinois Natural History Survey, Plecoptera catalog series, Champaign, Illinois (INHSPle), A.J. Cook Arthropod Research Collection, Michigan State

University, East Lansing, Michigan (MSUC), Ohio Biological Survey, Columbus (OBS), Purdue University Research Collections, West Lafayette, Indiana (PURC), the Royal Ontario Museum, Toronto (ROME), University of Michigan Zoology Collection, Ann Arbor, Michigan (UMMZ), Scott A. Grubbs Collection, Western Kentucky University, Bowling Green, Kentucky (WKU), and University of Wisconsin Entomological Research Center, Madison, Wisconsin (WIRC). All material examined is stored in ethyl alcohol.

Scanning electron micrographs (SEM) of eggs and male dorsal terminalia were prepared from the Alabama and Mississippi samples of *P. shubuta*. Egg and male SEMs were also prepared for several, tentatively-identified *P. shubuta* specimens from a broad geographic coverage of the central and eastern U.S.

Taxonomy

Perlesta shubuta Stark

http://species-id.net/wiki/Perlesta_shubuta

Figs 8, 22–24

Perlesta shubuta Stark 1989: 282 [Type locality: USA, Mississippi, Simpson Co., Mill Creek; National Museum of Natural History; male]. DeWalt et al. 2011 [distribution].

Material examined. USA: Alabama: Choctaw Co., Bogue Chitto Creek, 20 km NW Butler, 32.1872, -88.3969, 17.v.2011, S.A. Grubbs, ♂, 2♀ (WKU); tributary to Yantley Creek, 13 km NW Cromwell, 32.3004, -88.3837, 17.v.2011, S.A. Grubbs, ♂ (WKU); Sumter Co., Brockway Creek, 8 km SE Ward, 32.3369, -88.1977, 17.v.2011, S.A. Grubbs, ♂, ♀ (WKU). **Louisiana:** Natchitoches Parish, Kisatchie Bayou, Kisatchie Bayou Campground, Forest Rd. 366, 31.4416, -93.0893, 18.v.1992, at light, R.E. DeWalt, 2♂, ♀ (INHS), same but 9.vi.1992 (reared), R.E. DeWalt, 3♂, ♀ (INHS). **Mississippi:** Clarke Co., tributary to Long Creek, 20 km E Enterprise, 32.1673, -88.6260, 16.v.2011, S.A. Grubbs, ♂, ♀ (WKU); Rolling Creek, 8 km E Stonewell, 32.1470, -88.7076, 16.v.2011, S.A. Grubbs, 2♂, 2♀ (WKU); Simpson Co., Mill Creek, 14 May 1981, B.P. Stark, ♂ (Paratypes – BPS).

Egg. Oblong (Fig. 22). Collar wide but short, highly-infolded, and flanged distally (Figs 23–24). Chorion covered completely by shallow depressions that are visible at higher magnification (1000×; Fig. 23–24).

Comments. If the aedeagus is extruded fully, the combination of the updated taxonomic key provided in Stark (2004) and descriptions of *P. shubuta* by Stark (1989, 2004) are sufficient to identify males of this species. In absence of eggs, however, females cannot be reliably identified to species. The distally-flanged, short egg collar is similar only to *P. nelsoni* Stark, 1989 (see Grubbs 2005, Fig. 7), a species known from southern and central Appalachian drainages from Tennessee north to Pennsylvania and northward into New York (Stark 2004, Kondratieff and Myers 2011). The line drawing of *P. shubuta* provided by Stark (see Stark 1989, Fig. 93) does not show the flanged egg collar.

***Perlesta ephelida* Grubbs & DeWalt, sp. n.**

urn:lsid:zoobank.org:act:C5983849-EE20-4A42-BEB6-B5588AA1500A

http://species-id.net/wiki/Perlesta_ephelida

Figs 1–7, 9–21

Material examined. Holotype: male, in alcohol, **USA: Kentucky:** Warren Co., Trammel Fork, Drakes Creek, Alvaton, 36.8704, -86.3683, 2.vi.1999, S.A. Grubbs (INHS).

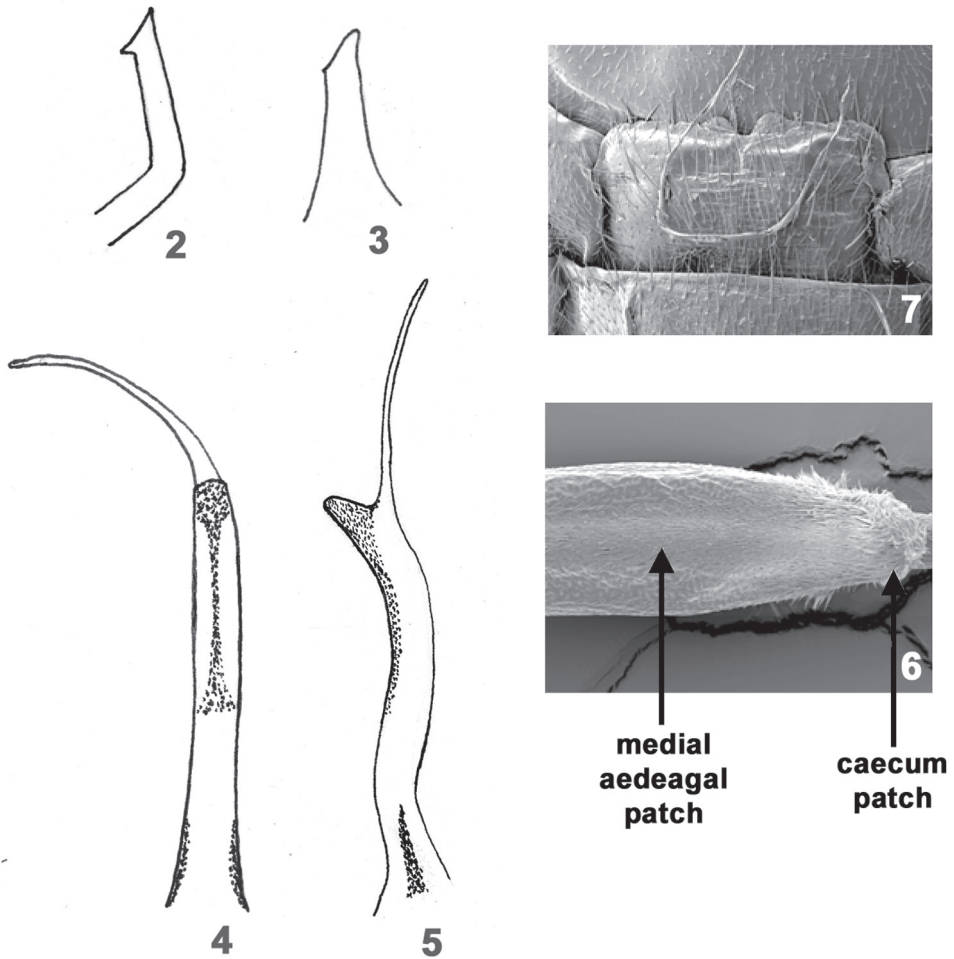
Paratypes. USA: Alabama: Clay Co., Enitachopco Creek, CR 35, 9 km ESE Millersville, 33.1602, -85.8352, 18.v.2008, S.A. Grubbs, 3♂, 2♀ (WKU). **Illinois:** Winnebago Co., Sugar River, Sugar River Forest Preserve, 42.4604, -89.2399, 22.vi.2010, R.E. DeWalt, E.W. Hernandez and M.M. Brown, 15♂ (INHS-516704). **Indiana:** Bartholomew Co., East Fork White River, Azalia Bridge, 1.5 km SW Azalia, 39.0849, -85.8598, 11.vi.2000, S.A. Grubbs, 4♂, 3♀ (WKU), same but 9.vii.2008, S.A. Grubbs, ♀ (WKU); Pulaski Co., Tippecanoe River, 8 km NNE Winamac, 41.1316, -86.5880, 28.vi.2006, R.E. DeWalt, 4♂, 3♀ (INHS-164863); Steuben Co., Pigeon River, Rte. 327, 14 km N Helmer, 41.6513, -85.1744, 23.vi.2006, S.A. Grubbs, 3♂, 4♀, 2 nymphs (WKU). **Kentucky:** Warren Co., same data as Holotype but 24.v.1999, S.A. Grubbs, ♂, 3♀ (WKU), same but 30.v.1999, S.A. Grubbs, ♂ (WKU), same but 19.vi.1999, S.A. Grubbs, ♀ (WKU), same but 20.vi.1999 (reared), S.A. Grubbs, ♀, nymph, exuvia (WKU), same but 22.vi.1999 (reared), S.A. Grubbs, ♀, exuvia (WKU), same but 26.vi.1999, S.A. Grubbs, ♀ (WKU), same but 29.vi.1999, S.A. Grubbs, ♀ (WKU), same but 2.vii.1999, S.A. Grubbs, ♂, ♀ (WKU), same but 9.vii.1999, S.A. Grubbs, ♀ (WKU), same but 20.v.2001, S.A. Grubbs, ♀ (WKU), same but 30.v.2011, S.A. Grubbs, ♂, ♀ (WKU). **Maryland:** Washington Co., Licking Creek, 1 km N Pectonville, 39.6760, -78.0430, 3.viii.1996, S.A. Grubbs, 7♂ (WKU), same but 6.viii.1996, S.A. Grubbs, ♂ (WKU), same but 12.vii.1997, S.A. Grubbs, 25♂, 69♀ (WKU). **Michigan:** Calhoun Co., South Branch Kalamazoo River, M-60, Homer, 42.1469, -84.8023, 25.vii.2006, S.A. Grubbs, 6♂, 8♀ (WKU); Ionia Co., Flat River, 2 km N Belding, Flat River State Game Area, 43.1197, -85.2243, 21.vi.2006, S.A. Grubbs, 3♂, 2♀, 4 nymphs (WKU); St. Joseph Co., Rocky River, 1 km SW Moore Park at Floating Bridge Rd., 42.0056, -85.6461, 9.vi.2010, R.E. DeWalt, M. Pessino and E.W. Hernandez, 6♂, 3♀ (INHS-549882). **Missouri:** Oregon Co., Eleven Point River, Rte.160, Riverton Access, 36.6489, -91.2004, 27.vi.2011, S.A. Grubbs, 2♂, ♀ (WKU). **Ohio:** Portage Co., Cuyahoga River, 6 km E Streetsboro Coits Rd., 41.2493, -81.2694, 25.vi.2006, R.E. DeWalt, 11♂, 14♀ (INHS-163781). **Wisconsin:** Sawyer Co., Namekagon River, NE Hayward, public canoe put-in, 46.0720, -91.4170, 25.vi.2010, R.E. DeWalt, E. Hernandez and M.M. Brown, 5♂, 6♀ (INHS-516414).

Additional material examined. CANADA: Flood River, [5 km S Atikokan], 48.7107, -91.5968, ROM Field Party, 3.vii.1984, 4 nymphs (ROM-9496); Ottawa River, Remic Rapids Champlain Bridge, 45.4078, -75.7544, 3.vii.1935, F. P. Ide, 2 nymphs (CNC-1282). **USA, Alabama:** Calhoun Co., Terrapin Creek, U.S. 278 at CR 33, 4 km NE Piedmont, 33.9550, -85.5712, 17.v.2008, S.A. Grubbs, ♂, ♀ (WKU); Cleburne Co., Tallapoosa River, CR 72, 21 km ENE Heflin, 33.7140,



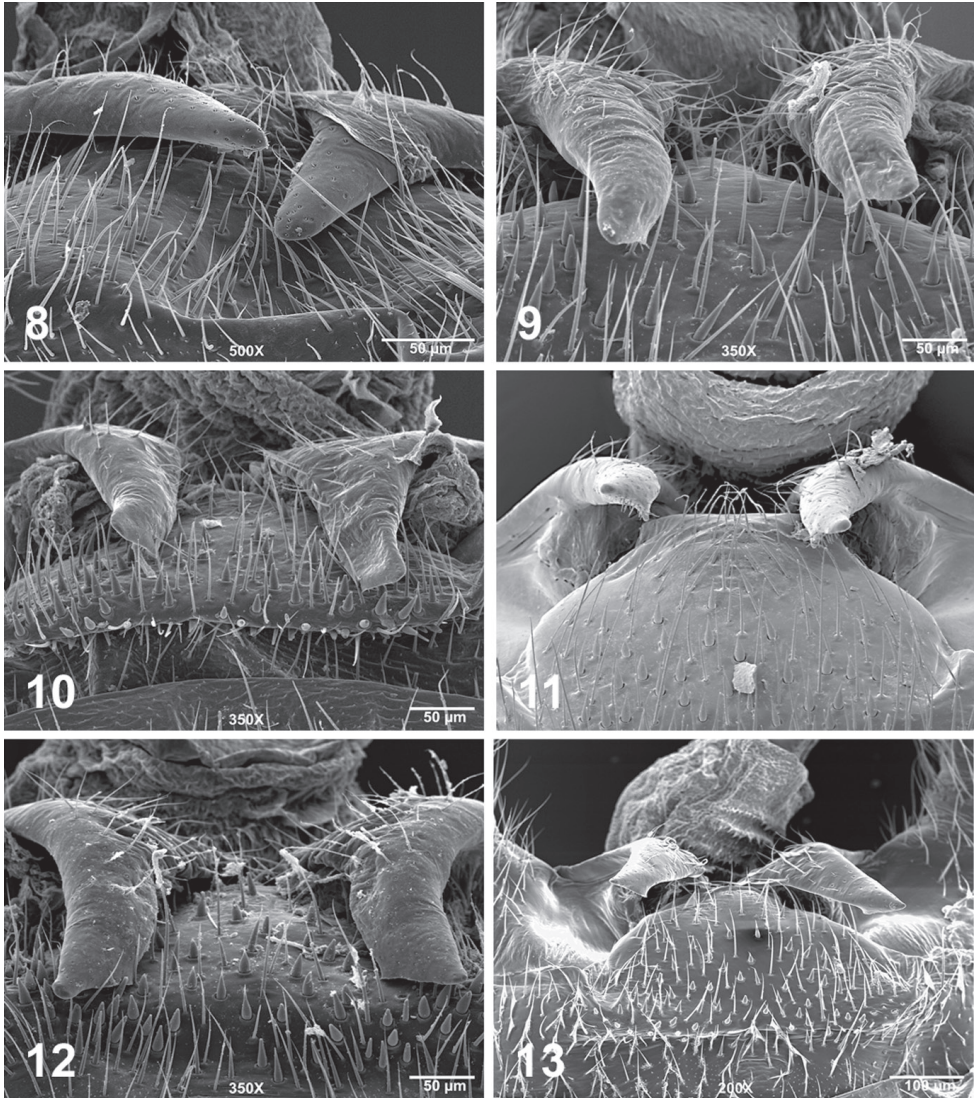
Figure 1. *Perlesta ephelida*. 1. Adult head and pronotum, dorsal.

-85.3733, 8.vi.2007, S.A. Grubbs, ♀ (WKU); Talladega Co., Cheaha Creek, CR 005, 12 km NE Talladega, 33.5319, -86.0415, 18.v.2008, S.A. Grubbs, 5♀ (WKU); Talladega Creek, CR 303, 6 km S Talladega, 33.3826, -86.0790, 18.v.2008, S.A. Grubbs, 3♀ (WKU); Tallapoosa Co., Hillabee Creek, 15 km NE Alexander City, 33.0657, -85.8798, 18.v.2008, S.A. Grubbs, ♀ (WKU). **Arkansas:** Lawrence Co., Spring River, 1 km S Ravenden, 36.2246, -91.2505, 27.vi.2011, S.A. Grubbs, 2♀ (WKU); Sharp Co., Martins Creek, 5 km NE Wilford, 36.2722, -91.3326, 27.vi.2011, S.A. Grubbs, ♂ (WKU). **Illinois:** Clark Co., Big Creek, 6.5 km NNW Marshall, 39.4480, -87.7170, 21.vi.1993, D.W. Webb, 3♂, 2♀ (INHSple-2978); Franklin Co., Big Muddy River, Zeigler, 37.8914, -89.0199, 6.viii.1976, S. Herbert, ♂ (INHS-487359). **Indiana:** Allen Co., Cedar Creek, 1 km W Cedar Canyons at Auburn Rd., 41.2351, -85.1027, 27.vi.2007, R.E. DeWalt, 14♂ (INHS-454376); Cass Co., Eel River, 1 km NE Adamsboro, along CR 600E, 40.7970, -86.2571, 24.v.2006, R.E. DeWalt, ♂, nymph (INHS-164562); Elkhart Co., Little Elkhart River, 5 km E Bristol, Bonnieville Mill County Park, 41.7192, -85.7630, 23.vi.2006, S.A. Grubbs, ♂, 3♀ (WKU); Franklin Co., West Fork Whitewater River, nr. U.S. 52, 1 km W Metamora, 39.4550, -85.1562, 6.vi.2009, S.A. Grubbs, ♀ (WKU); Johnson Co., Sugar Creek, 4.2 km NW Edinburgh, 39.3821, -85.9978, 21.vi.2006, R.E. DeWalt, ♂ (INHS-163722); Kosciusko Co., Cherry Creek, Winona Lake, 41.2270, -85.8220, 30.vi.1947, F. E. Mockford, ♂ (CNC-1288); Monroe Co., Bloomington, 39.1653,



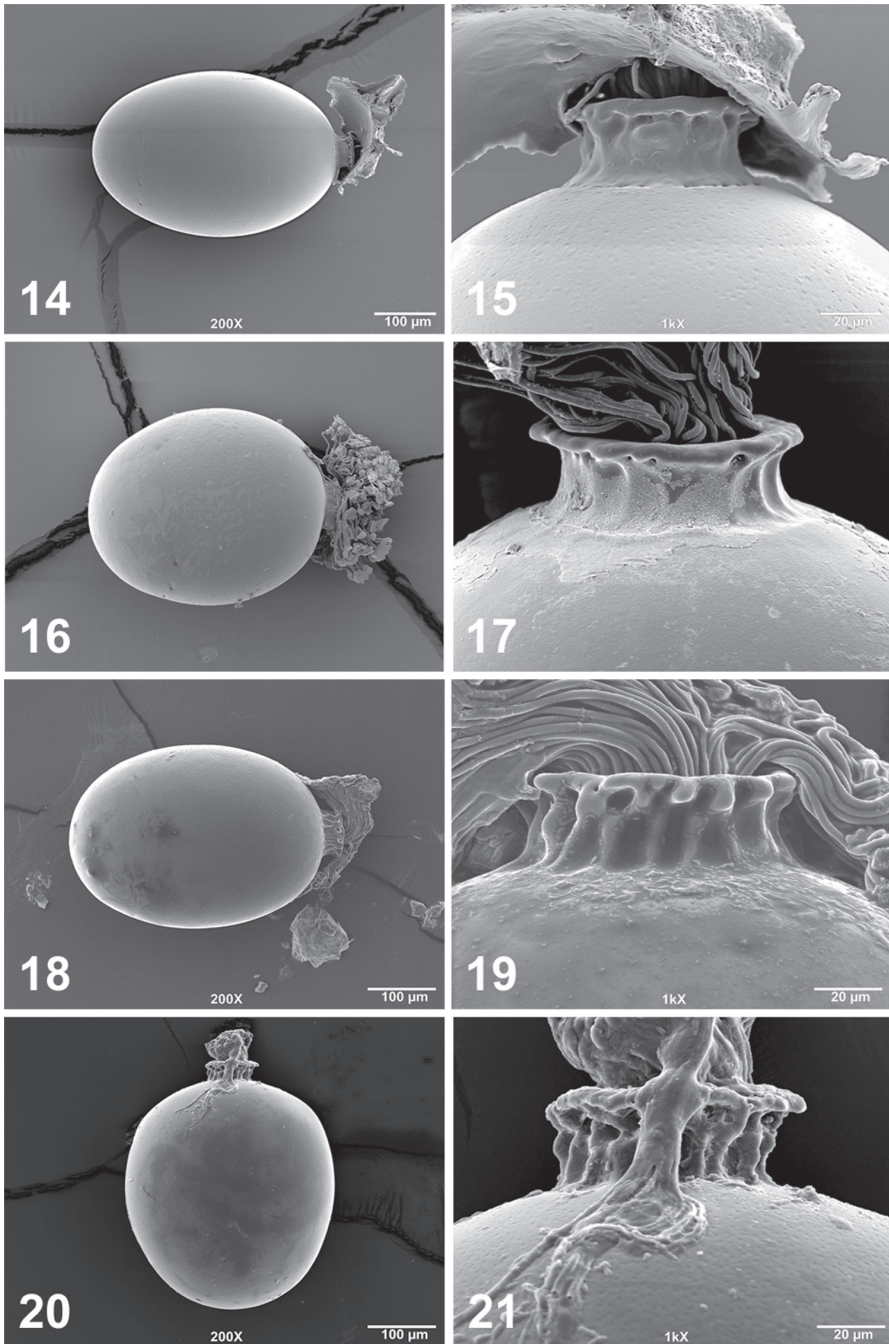
Figures 2–7. *Perlesta ephelida*. **2** Left paraproct, lateral **3** Left paraproct, caudal **4** Aedeagus, dorsal **5** Aedeagus, lateral **6** SEM micrograph, aedeagus, dorsal, 500X **7** SEM micrograph, female terminalia, ventral, 150X.

-86.5264, 9.vii.1938, Sherrill, ♀ (CNC-1305); Morgan Co., 39.6206, -86.2819, 28.vi.1933, Musgrave, ♀ (PURC-4261); Newton Co., Beaver Lake Ditch, 0.8 km NE Conrad, 41.1073, -87.4373, 8.vii.1998, E. H. Metzler, ♀ (OBS-2910); Starke Co., Kankakee River, 0.25 km N English Lake, 41.2720, -86.8246, 27.vi.2006, R.E. DeWalt, ♀ (INHS-164854); Tippecanoe Co., Wabash River, Lafayette, 40.4202, -86.8971, 16.vii.1923, G. M. Sterrett, ♂ (CNC-1834). **Iowa:** Buchanan Co., Lime Creek, 3.2 km NE Brandon, 42.3296, -91.9805, 8.vi.2000, D. Heimdal, ♂, ♀ (INHS-36090). **Kentucky:** Allen Co., Long Creek, Rte. 100, 10 km SE Scottsville, Barren River Lake WMA, 36.6965, -86.0469, 14.vi.2001, S.A. Grubbs and J.M. Taylor, ♂, 15♀ (WKU); Bell Co., Cumberland River, NE of Pineville along US-119,



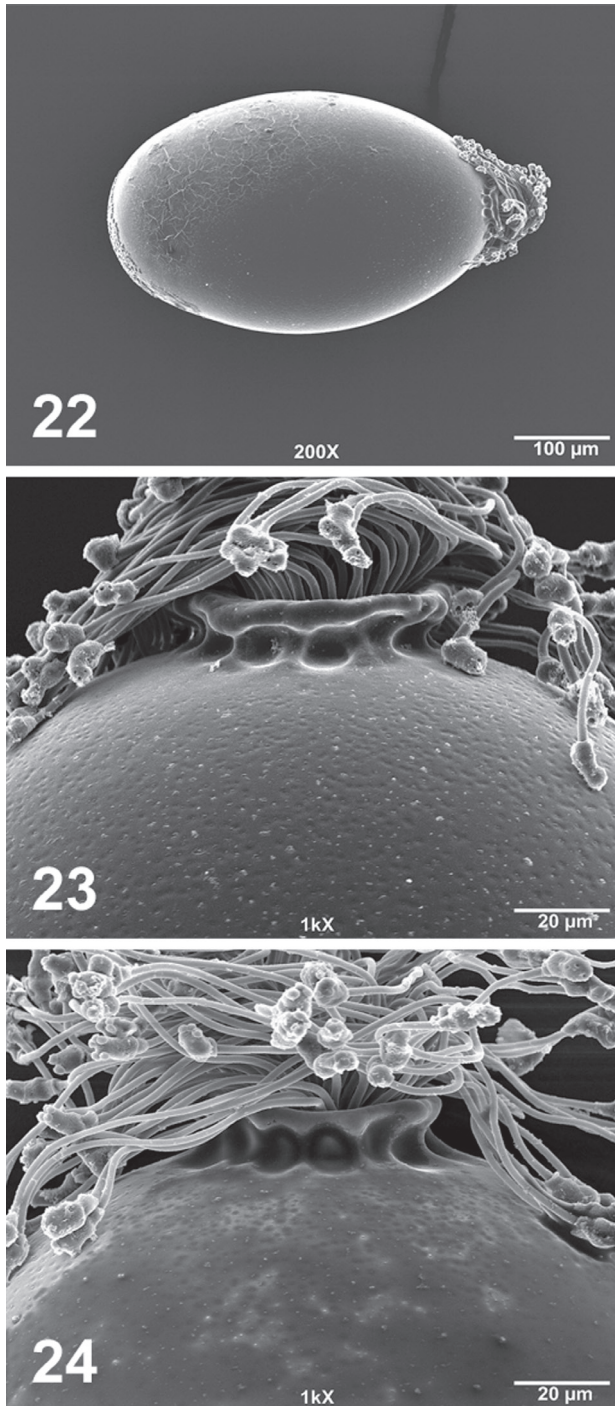
Figures 8–13. Male terminalia, posterodorsal view, SEM micrographs (**8** *Perlesta shubuta*, USA, Mississippi, Clarke Co., Rolling Creek, 16 May 2011, 500X **9–13** *Perlesta ephelida* **9** USA, Alabama, Clay Co., Enitachopco Creek, 18 May 2008, 350X **10** USA, Indiana, Bartholomew Co., East Fork White River, 11 June 2000, 350X **11** USA, Maryland, Washington Co., Licking Creek, 12 July 1997, 350X **12** USA, Michigan, Calhoun Co., South Branch Kalamazoo River, 25 July 2006, 350X **13** USA, Missouri, Oregon Co., Eleven Point River, 27 June 2011, 200X.

36.7226, -83.6398, 7.vi.2007, R.E. DeWalt and L. Fennema, 5♂, ♀ (INHS-454363); Green Co., Little Brush Creek, 5 km WNW Summersville, 37.3344, -85.5913, 3.vi.2006 (reared), S.A. Grubbs, ♂ (WKU); Brush Creek, Rte. 61, 10 km NW Summersville, 37.3909, -85.6105, 3.vi.2006 (reared), S.A. Grubbs, ♀ (WKU);



Figures 14–21. *Perlesta ephelida* egg SEM micrographs (14–15 USA, Kentucky, Warren Co., Trammel Fork, Drakes Creek, 24 May 1999 16–17 USA, Maryland, Washington Co., Licking Creek, 12 July 1997 18–19 USA, Michigan, Calhoun Co., South Branch Kalamazoo River, 25 July 2006 20–21 USA, Arkansas, Lawrence Co., Spring River, 27 June 2011) 14, 16, 18, 20 Entire egg, 200X; 15, 17, 19, 21. Anterior pole and collar, 1000X.

Warren Co., Middle Fork Drakes Creek, 19 km NE Franklin, 36.8187, -86.3944, 10.vi.1999, S.A. Grubbs, ♂, ♀ (WKU); at confluence of Barren River and Green River, 15 km NW Richardsville, 37.1809, -86.6232, 4.vi.1999, S.A. Grubbs, ♂ (WKU); **Maryland:** Allegany Co., Flintstone Creek, Flintstone, 14.viii.1995, 39.7079, -78.5664, S. A. Grubbs, ♀ (WKU), same but 4.vii.1996, S.A. Grubbs, 9♂, 4♀ (WKU), same but 2.viii.1996, S. A. Grubbs, ♂, 3♀ (WKU); Sideling Hill Creek, Scenic U.S. 40, nr. Bellegrove, 39.7044, -78.3284, 3.viii.1996, S.A. Grubbs, 7♀ (WKU), same but 23.vi.1997, S.A. Grubbs, 3♀ (WKU), same but 14.vii.1998, S.A. Grubbs, 3♂ (WKU); Sideling Hill Creek, 1 km NE Bellegrove, 39.7084, -78.3313, 4.vii.1996, S.A. Grubbs, ♂, 6♀ (WKU); Town Creek, 5 km NE Oldtown, Green Ridge State Forest, 39.5744, -78.5468, 4.vii.1996, S.A. Grubbs, 2♂, 10♀ (WKU), same but 8.vi.1998, S.A. Grubbs, 3♂, 2♀ (WKU); Harford Co., Deer Creek, 7 mi NW Bel Air, Rocks State Park, 39.6314, -76.4052, 12.vii.1998, S.A. Grubbs, ♂, 2♀ (WKU); Washington Co., Conococheague Creek, 1 km E Fairview, 39.7163, -77.8256, 14.vii.1998, S.A. Grubbs, 10♂, 24♀ (WKU); Tonoloway Creek, Hancock, 39.6981, -78.1565, 3.viii.1996, S.A. Grubbs, 2♀ (WKU). **Massachusetts:** Hampshire Co., Ware River, Rte. 32, 3 km S Gilbertsville, 42.2847, -72.2161, 28.vi.2006, S.A. Grubbs, ♂ (WKU). **Michigan:** Allegan Co., Rabbit River, 10 km W Wayland, 42.6779, -85.7612, 19.vi.2006, S.A. Grubbs, ♂, ♀ (WKU); Benzie Co., [Platte River], Benzie State Park, 44.7183, -86.1165, 23.viii.1960, R.A. Scheibner, ♀ (MSUC-8317); Berrien Co., Dowagiac Creek, U.S. 31, Niles, 41.8452, -86.2621, 30.vii.1994, S.A. Grubbs, 5♂, 4♀, 2 nymphs (WKU), same but 7.vi.2001, S.A. Grubbs, 4♂, 2♀ (WKU); Dowagiac Creek, M-51, 2 km N Niles, 41.8643, -86.2416, 19.vi.2006, S.A. Grubbs, 8♂, 9♀ (WKU); Galien River, New Buffalo, 41.8084, -86.7154, 22.vi.1957, J. Lowe, 2♂, ♀ (CNC-500); Clare Co., Middle Branch Tobacco River, 11 km NE Clare, 43.9092, -84.7006, 24.vii.2006, S.A. Grubbs, ♂, 2 nymphs, exuviae (WKU); Clinton Co., Vermillion Creek, Bath, 42.8345, -84.3692, 15.vii.1955, R.L. Fischer, ♂ (MSUC-7832); Gladwin Co., Cedar River, 5 km N Beaverton, 43.9308, -84.4760, 24.vii.2006, S.A. Grubbs, ♀ (WKU); Hillsdale Co., East Branch St. Joseph River, 14 km W Hudson, Lost Nation State Game Area, 41.8635, -84.5145, 23.vi.2006, S.A. Grubbs, ♂, ♀ (WKU); East Fork West Branch St Joseph River, 14 km S Hillsdale at Dimmers Road, 41.7960, -84.6380, 27.vii.2000, J. Mandrelle, 5♂, 11♀ (OBS-6338); West Branch St. Joseph River, Boy Scout Camp Property, 5 km E State Rte. 49 at Territorial Road, 41.7071, -84.6903, 27.vi.2000, J. Mandrelle, ♂, 7♀ (OBS-6324); Ingham Co., [Grand River], Lansing, 42.7325, -84.5497, 23.vi.1981, ♂ (MSUC-2368); Isabella Co., Pine River, 8 km N Cedar Lake, Edmond State Game Area, 43.4733, -84.9701, 21.vi.2006, S.A. Grubbs, 3♀ (WKU); Kalamazoo Co., Kalamazoo River, 1.5 km SW Galesburg at 35th St., 42.2803, -85.4285, 19.vi.2010, R.E. DeWalt, M. Pessino and E.W. Hernandez, 3♂, ♀ (INHS-550553); Lake Co., Pere Marquette River, 7 km E Baldwin, 43.8869, -85.9370, 23.vii.2006, S.A. Grubbs, 2♂ (WKU); Lenawee Co., River Raisin, 10 km NE Adrian, 41.9492, -83.9415, 23.vi.2006, S.A. Grubbs, ♂ (WKU); [River Raisin], Clinton, 42.0718, -83.9796, 28.vi.1941, T.H. Frison and H.H. Ross, ♂



Figures 22–24. *Perlesta shubuta* egg SEM micrographs (22–23 USA, Mississippi, Clarke Co., Rolling Creek, 16 May 2011 23 USA, Alabama, Choctaw Co., Bogue Chitto Creek, 17 May 2011) 22 Entire egg, 200X 23–24 Anterior pole and collar, 1000X.

(INHSPle-3828); Livingston Co., Portage River, 3 km SE Hell at Dexter-Town Hall Rd, 42.4242, -83.9497, 9.vi.2010, R.E. DeWalt, M. Pessino and E.W. Hernandez, 12♂, 12♀ (INHS-514942); Menominee Co., Little Cedar River, 6 km W Carney at G18, 45.5799, -87.6332, 9.vii.2011, R.E. DeWalt, 2♀ (INHS-552590); Montcalm Co., Fish Creek, Carson City, 43.1773, -84.8566, 21.vi.2006, S.A. Grubbs, 3♂ (WKU); Flat River, Greenville, 43.1771, -85.2478, 21.vi.2006, S.A. Grubbs, ♂ (WKU); Flat River, at Hunter Lake, T11N R8W Sec. 33, 43.2921, -85.2592, 8.vii.1966, J. P. Donahue, 3♀ (MSUC-7480); Presque Isle Co., 45.3077, -83.8724, 5.viii.1948, ♂ (MSUC-7839); Saginaw Co., Bad River, 10 km W St. Charles, 43.2987, -84.2689, 21.vi.2006, S.A. Grubbs, ♂ (WKU); St. Clair Co., Bad River, 15 km SE Yale, 43.0926, -82.6181, 22.vi.2006, S.A. Grubbs, 3♂, 2♀ (WKU); St. Joseph Co., Pigeon River, 7 km WSW Pigeon River, 41.7764, -85.7213, 19.vi.2006, S.A. Grubbs, 3♂, ♀ (WKU), same but 21.vii.2006, S.A. Grubbs, ♂, ♀ (WKU); Portage River, Parkville, 42.0146, -85.5480, 19.vi.2006, S.A. Grubbs, ♂, 2♀ (WKU); Prairie River, Centreville, 41.9291, -85.5284, 21.vii.2006, S.A. Grubbs, ♀ (WKU); Washtenaw Co., Huron River 3 km SE Dexter, 42.3283, -83.8531, 22.vi.2006, S.A. Grubbs, 2♂, ♀ (WKU); Huron River, Scio township, 42.3235, -83.8404, 20.vi.1988, T.E. Moore, ♂, ♀ (UMMZ-2807). **Missouri:** St. Francois Co., Big River, Adjacent to picnic grounds, 37.9669, -90.5346, 19.vi.2008, R.E. DeWalt, ♂ (INHS-515558). **Ohio:** Ashland Co., Clear Fork [Mohican] River, SE Pleasant Hill Reservoir, 40.6082, -82.2540, ♀, T. Yamamoto, L. Kohalmi, 1.viii.1968, ROME-9773); Ashtabula Co., Ashtabula River, 1.9 km WNW Gageville, 41.8486, -80.6895, 15.vii.1998, M. Silvaggio, 5♀ (OBS-3047); Columbiana Co., Little Beaver Creek, Wayne Twp. [at Steubenville Rd], 40.6947, -80.7658, 14.vii.1997, E.G. Chapman, 2♀ (OBS-6653); Coshocton Co., Bucklew Run, 5 km E Warsaw at Twp. 28 Rd., 40.3323, -81.9378, 26.vi.1999, S.W. Chordas III and J. Thompson, 5♂, 2♀ (OBS-3212); Defiance Co., Mud Creek, 13 km WNW Defiance, 41.3339, -84.4968, 17.vii.2000, S.W. Chordas III and E.G. Chapman, ♀ (OBS-6372); Lake Co., Paine Creek, SE Lane, 41.7208, -81.1761, 22.vi.1999, ♀ (INHS-163045); Licking Co., North Fork Licking River, 3 km S Utica, 40.2095, -82.4428, 13.vii.1999, S. O'Dee, ♀ (OBS-2904); Miami Co., Rush Creek, 5 km NE Piqua, 40.1821, -84.2151, 17.vii.2000, S.W. Chordas III and E.G. Chapman, ♀ (OBS-3064); Paulding Co., Maumee River, 16 km NW Paulding, 41.1983, -84.7467, 17.vii.2000, S.W. Chordas III and E.G. Chapman, ♂, ♀ (OBS-6330); Pike Co., Pike State Forest, 39.1031, -83.2682, 1.vi.1938, C.R. Neiswander, 2♂, ♀ (INHSPle-3907); Richland Co., Rocky Fork Mohican River, SE Mansfield, 40.7025, -82.3666, 27.vii.1999, E.G. Chapman, 2♀ (OBS-6313); Scioto Co., 38.8371, -83.0445, 1.vi.1925, C.H. Kennedy, ♂ (OSU-10765); Vinton Co., Pike Run, at SR 327 deadend, 39.3074, -82.7315, 7.vii.1996, J. McCreery, ♀ (OBS-7229); Wayne Co., Killbuck Creek, 9 km SW Wooster, 40.6945, -81.9798, 22.vi.1999, E.G. Chapman, 8♀ (OBS-6327); Williams Co., East Branch St. Joseph River, 4 km N Pioneer, 41.6950, -84.5107, 27.vii.2000, J. Mandrelle, 3♀ (OBS-6339). **West Virginia:** Morgan Co., Cacapon River, Rte. 9, 39.5286, -78.3478, 12.vi.1998, S.A. Grubbs, 3♂, 3♀ (WKU). **Wisconsin:** Burnett Co., St. Croix River,

Riverside, 46.0772, -92.2461, 25.vi.2010, R.E. DeWalt, E. Hernandez and M.M. Brown, 2♂, 3♀ (INHS-516406); Dane Co., 43.0186, -89.5498, 30.vi.1949, W. McNeel, ♀ (WIRC-7152); Fond Du Lac Co., T13N, R19E, S23, 43.6687, -88.1938, 24.vi.1975, ♀ (WIRC-14414); Jackson Co., Halls Creek, , 44.3594, -90.7845, 18.vi.1968, ♀ (WIRC-14729); Lincoln Co., Prairie River, WI-17, 45.3361, -89.4650, 20.viii.1992, R.W. Baumann and C.R. Nelson, ♂, ♀ (BYU-1); Marinette Co., Menominee River, 18 km NE Amberg at CR-Z, 45.5814, -87.7866, 26.vi. 2010, R.E. DeWalt, E. Hernandez and M.M. Brown, 10♂ (INHS-550141); Price Co., [South] Fork Flambeau River, Fifield, 45.8798, -90.4156, 18.vi.1934, T.H. Frison and C.O. Mohr, ♂ (INHSPle-3908); Vilas Co., Trout River, Trout Lake, 46.0350, -89.7059, 22.vii.1937, T.H. Frison and H.H. Ross, ♂ (INHSPle-3811).

Adult habitus. Head yellow with a dark brown subquadrate ocellar patch and a small, light brown subtriangular patch anterior to the anterior ocellus, pronotum golden-brown with a very faint lighter medial stripe in some specimens (Fig. 1). Wing membrane and veins amber except for pale costal region. Femora dorsally brown, laterally and ventrally yellow; tibia brown. Abdominal terga and sterna yellow. Cerci pale yellow proximally, brown distally.

Male. Forewing length 7.5–8.5 mm. Tergum 10 mesal sclerites brown, sensilla basiconica patch distinct with interspersed long hairs (Figs 9–13). Paraproct broadest basally, apically acute, with distinct subapical tooth directed anteromedially (Fig. 2) and typically seen dorsally (Figs 9–13), in caudal view resembling a hypotenuse triangle and tooth visible (Fig. 3). Penis tube + sac long, caecum moderately-sized and thumb-shaped (Fig. 4), lateral sclerite distinct, dorsal patch broad basally, narrowing to narrow strip before expanding apically over caecum and tube (Fig. 5). At higher magnification the dorsal aedeagal patch hairs are noticeably shorter than the expanded portion over the caecum (Fig. 6).

Female. Forewing length 9.0–11.0 mm. Subgenital plate lobes comprise medial half of 7th sternite, extending scarcely past anterior margin of 8th sternite, outer margins rounded, inner margins rounded and expanded slightly distally, separated by a shallow v-shaped notch (Fig. 7).

Egg. Oval. Collar wide and distinctly stalked, highly-infolded, and flanged distally. Chorion smooth or finely pitted (Figs 14–21). Micropyles located ca. ¼ from posterior pole.

Nymph. Undescribed.

Etymology. The species name is a derivation of the Greek word (“ephelis”) for freckle (Brown 1956), in reference to the heavily-freckled head mask of the nymphs and associated exuviae.

Diagnosis. The males of *P. ephelida* will key to couplets 11 and 12 in Stark (2004), with a paraproct spine visible in lateral view and a group that includes *P. shubuta* Stark, *P. puttmanni* Kondratieff & Kirchner, 2003, and *P. decipiens* (Walsh, 1862). Although the paraproct spine of *P. ephelida* is directly somewhat anteriorly, it is mainly mesally-directed and typically seen in dorsal aspect (Figs 9–13), and superficially similar to *P. puttmanni* (see Kondratieff and Kirchner 2003, Fig. 10). The paraproct spine of *P. shubuta* is

not visible in dorsal aspect and the tips are rounded apically (Fig. 8); the epiproct tips are pointed apically in *P. ephelida* (Figs 9–13). The paraproct spine in *P. puttmanni* is visible caudally (see Kondratieff and Kirchner 2003, Fig. 12), which is also seen in this aspect in *P. ephelida* (Fig. 3), but is not visible in *P. shubuta* (see Stark 2004, Fig. 7.352). The narrow aedeagal dorsal patch of *P. ephelida* (Fig. 4) is slightly broader than *P. puttmanni* (see Stark 2004, Fig. 7.367), whereas both *P. shubuta* (see Stark 2004, Fig. 7.369) and *P. decipiens* (see Stark 2004, Fig. 7.306) bear conspicuously broader patches. The egg of *P. ephelida* possesses a wide, well-developed, and distally-flanged collar (Figs 15, 17, 19, 21), resembling *P. decipiens* (Stark 2004, Fig. 7.397) but easily contrasted from the short collars of *P. shubuta* (Figs 23–24), and *P. puttmanni* (see Kondratieff and Kirchner 2003, Fig. 15). The subgenital plate of *P. decipiens* (see Stark 2004, Fig. 7.379) has prominent truncate lobes and a deep v-shaped notch while the medial notch of *P. ephelida* is shallow and v-shaped (Fig. 7). The female of *P. ephelida* can only be confidently identified if mature eggs are present and associated with a male with a fully-extruded aedeagus.

Remarks. The type locality is a 5th-order gravel-bottom stream positioned in the Western Pennyroyal Karst Plain Level IV Ecoregion. Additional stonefly species obtained from the type locality were *Allocapnia granulata* (Claassen, 1924), *A. nivicola* (Fitch, 1847), *A. recta* (Claassen, 1924), *A. rickeri* Frison, 1929, *Amphinemura alabama* Baumann, 1996, *A. nigritta* (Provancher, 1876), *Strophopteryx fasciata* (Burmeister, 1839), *Taeniopteryx maura* (Pictet, 1841), *Acroneuria frisoni* Stark & Brown, 1991, *Perlinella drymo* (Newman, 1839), *P. ephyre* (Newman, 1839), *Neoperla catharae* Stark & Baumann, 1978, *N. stewarti* Stark & Baumann, 1978, *Clioperla clio* (Newman, 1839), *Isoperla decepta* Frison, 1935, and *Pteronarcys dorsata* (Say, 1823).

Perlesta ephelida is distributed broadly across the central and eastern U.S. from eastern Alabama northeast to Massachusetts, north to the Great Lakes region and Iowa, and northwest to the Interior Highlands region of Arkansas, Missouri, and Oklahoma. *Perlesta ephelida* is expected to be collected from intervening states (e.g. Pennsylvania, Tennessee) where this species has yet to be reported. In contrast, *P. shubuta* appears to be restricted to a narrow latitudinal belt in the Gulf Coast region of the southeastern U.S., known currently from Louisiana east to northern Florida panhandle and likely to South Carolina.

The *P. shubuta* records reported from Illinois (DeWalt et al. 2005, DeWalt and Grubbs 2011), Indiana (DeWalt and Grubbs 2011), Iowa (Heimdal et al. 2004), Michigan (Grubbs and Bright 2001), and Ohio (DeWalt et al. 2012) refer to *P. ephelida*. Similarly, the *P. decipiens* records from Calhoun (Terrapin Creek) and Clay (Enitachopco Creek) counties noted in Grubbs (2011) are now of *P. ephelida*.

Modified key to couplets 11 and 12 in Stark (2004) to identify males of *Perlesta ephelida*:

- 11 Dorsal aedeagal patch covers about 1/3 of tube surface length (Stark 2004, Fig. 7.369); forewing length 6–7 mm ***P. shubuta* Stark**
 – Dorsal aedeagal patch covers most of tube surface length (Stark 2004, Fig. 7.367); paraprocts forewing length 8–10 mm **12**

- 12 Paraproct spine directed mesad, visible in caudal aspect (Stark 2004, Fig. 7.344)..... **12a**
 – Paraproct spine directed forward, not visible in caudal aspect (Stark 2004, Fig. 7.310)..... *P. decipiens* (Walsh)
 12a Dorsal aedeagal patch narrower *P. puttmanni* Kondratieff & Kirchner
 – Dorsal aedeagal patch wider..... *P. ephelida* Grubbs & DeWalt, sp. n.

Acknowledgments

We thank the following individuals for loan of specimens for this project: Bill P. Stark (BPS), Richard W. Baumann and Shawn Clark (BYU), Ian Smith (CNC), Gary Parsons (MSUC), Brian Armitage (OBS), Norman Johnson (OSU), Arwin Provonsha (PURC), Antonia Guidotti (ROME), Mark F. O'Brien (UMMZ), and Steven Krauth (WIRC). Funding to support this research has been provided by Western Kentucky University Faculty Scholarship Grants and Summer Fellowships to SAG, a United States of America National Science Foundation DEB 09-18805 ARRA award to the authors, and a United States Department of Interior grant X-1-R-1 to RED.

References

- Brown RW (1956) Composition of Scientific Words: A Manual of Methods and a Lexicon of Materials for the Practice of Logotechnics. Smithsonian Institution Press. Washington DC, 882 pp.
- DeWalt RE, Grubbs SA (2011) Updates to the stonefly fauna of Illinois and Indiana. *Illiesia* 7: 31–50.
- DeWalt RE, Webb DW, Kompare TN (2001) The *Perlesta placida* (Hagen) complex (Plecoptera: Perlidae) in Illinois, new state records, distributions, and an identification key. *Proceedings of the Entomological Society of Washington* 103: 207–216.
- DeWalt RE, Favret C, Webb DW (2005) Just how imperiled are aquatic insects? A case study of stoneflies (Plecoptera) in Illinois. *Annals of the Entomological Society of America* 98: 941–950. doi: 10.1603/0013-8746(2005)098[0941:JHIAAI]2.0.CO;2
- DeWalt R, Cao Y, Tweddle T, Grubbs S, Hinz L, Pessino M, Robinson J (2012) Ohio USA stoneflies (Insecta, Plecoptera): species richness estimation, distribution of functional niche traits, drainage affiliations, and relationships to other states. *ZooKeys* 178: 1–26. doi: 10.3897/zookeys.178.2616
- Graves PH III, Ward GM (2011) Mayfly and stonefly distribution in the mainstem Cahaba River, Alabama. *Southeastern Naturalist* 10: 477–488. doi: 10.1656/058.010.0307
- Grubbs SA (2004) Studies on Indiana stoneflies (Plecoptera), with an annotated and revised state checklist. *Proceedings of the Entomological Society of Washington* 106: 865–876.
- Grubbs SA (2005) *Perlesta shawnee*, a new stonefly species from eastern North America. *Aquatic Insects* 27: 63–69. doi: 10.1080/01650420400010485

- Grubbs SA (2011) A review of stonefly (Insecta; Plecoptera) taxonomic research in Alabama, with new state records and an updated checklist. *Illiesia* 7: 24–30.
- Grubbs SA, Bright E (2001) *Arcynopteryx compacta*, a Holarctic stonefly confirmed from Lake Superior, with a review and first checklist of the stoneflies of Michigan. *Great Lakes Entomologist* 34: 77–84.
- Heimdal DP, DeWalt RE, Wilton TF (2004) Annotated list of the stoneflies (Plecoptera) of Iowa. *Proceedings of the Entomological Society of Washington* 106: 761–778.
- Kondratieff BC, Kirchner RF (2003) Two new species of *Perlesta* (Plecoptera: Perlidae) from eastern North America. *Proceedings of the Entomological Society of Washington* 105: 933–939.
- Kondratieff BC, Myers LW (2011) A new species of *Perlesta* (Plecoptera: Perlidae) from New York. *Illiesia* 7: 197–201.
- Kondratieff BC, Zuellig RE, Lenat DR (2011) A new species of *Perlesta* (Plecoptera: Perlidae) from North Carolina with additional records for North Carolina and Virginia. *Illiesia* 7: 297–301.
- Pescador ML, Rasmussen AK, Richard BA (2000) A guide to the stoneflies (Plecoptera) of Florida. Florida Department of Environmental Protection, Division of Water Resource Management, 94 pp.
- Pescador ML, Richard BA, Rasmussen AK (2004) An aquatic invertebrate survey for the Congaree Swamp National Park, Richland County, South Carolina. Entomology/Center for Water Quality, Florida A&M University, 103 pp.
- Ray DH, Abad RL, Rasmussen AK, Stark BP (2012) New records and an updated checklist of the stoneflies (Plecoptera) from Florida. *Illiesia* 8: 1–9.
- Stark BP (1989) *Perlesta placida* (Hagen), an eastern Nearctic species complex (Plecoptera: Perlidae). *Entomologica Scandinavica* 20: 263–286. doi: 10.1163/18763187631289X00339
- Stark BP (2004) Perlidae (The Stones). IN: Stark BP, Armitage BJ (Eds) Stoneflies (Plecoptera) of Eastern North America. Vol. II. Chloroperlidae, Perlidae, and Perlodidae (Perlodinae). *Bulletin of the Ohio Biological Survey New Series* 14: 61–148.
- Tarter DC, Nelson CH (2010) New state, county, and drainage basin records of West Virginia (USA) stoneflies (Plecoptera). *Entomological News* 121: 159–162. doi: 10.3157/021.121.0206
- Tarter DC, Chafee DL, Grubbs SA (2006) Revised checklist of the stoneflies (Plecoptera) of Kentucky, U.S.A. *Entomological News* 117: 1–10. doi: 10.3157/0013-872X(2006)117[1:RCOTSP]2.0.CO;2