

On the Austral-Antarctic stenothoids *Proboloides*, *Metopoides*, *Torometopa* and *Scaphodactylus* (Crustacea Amphipoda) Part 2: the genus *Proboloides*, with description of two new genera and the transfer of two nominal species to *Metopoides*

Traudl Krapp-Schickel

Museum Alexander Koenig, Adenauerallee 160, 53113 Bonn, Germany

urn:lsid:zoobank.org:author:E1B1DCCF-04CB-4B1A-A69B-A7C25EC95A38

Corresponding author: Traudl Krapp-Schickel (traudl.krapp@uni-bonn.de)

Academic editor: Charles Coleman | Received 8 December 2010 | Accepted 2 March 2011 | Published 19 March 2011

urn:lsid:zoobank.org:pub:93C85819-F400-42B0-84A0-21E5D0CFDFDC

Citation: Krapp-Schickel T (2011) On the Austral-Antarctic stenothoids *Proboloides*, *Metopoides*, *Torometopa* and *Scaphodactylus* (Crustacea Amphipoda) Part 2: the genus *Proboloides*, with description of two new genera and the transfer of two nominal species to *Metopoides*. ZooKeys 86: 11–45. doi: 10.3897/zookeys.86.752

Abstract

This is the second part of a revision of the most plesiomorphic genera in the amphipod family Stenothoidae sensu lato (see Krapp-Schickel and Koenemann 2006 for an overview and Krapp-Schickel 2008 for the first part). 41 species not belonging to *Metopoides* were plotted in a matrix using the same 61 characters as in the first part. The resulting group of *Proboloides* species (most probably not existing in the Austral-Antarctic region) is discussed, a key for the members given and two new genera erected. Some species described as *Proboloides* are redescribed and 2 species transferred to *Metopoides*. A key for all actual members of *Proboloides* and a revised key for *Metopoides* is added. The remaining species, i.e. those actually being in the genera *Torometopa* and *Scaphodactylus*, will be dealt with in the final part of this series, together with a key to all of them.

Keywords

Stenothoidae sensu lato; systematics; phylogenetic analysis; gen. *Proboloides*; *Malvinometopa* gen. n.; *Vic-tometopa* gen. n.; *Victometopa rorida* sp. n.

Introduction

Barnard and Karaman (1991: 694 ff.) list 23 species belonging to the genera *Metopoides* and *Probolooides*, which were always difficult to differentiate. Since this publication the number of species has increased, while our knowledge on character states did not grow the same way. The results of a phylogenetic analysis of the entire family Stenothoidae sensu lato by Krapp-Schickel and Koenemann (2006) showed not only that the genera treated therein had many plesiomorphic character states, but also that too many characters were still unknown or poorly described. Thus before further studies of the phylogenetic relationships, several species required redescription or at least checking of new characters not described so far.

Material and methods

As many species as possible of this group were studied and redescribed, in order to replace the (initially numerous) question marks in the start-up matrix. Species were borrowed from different Museums.

Acronyms for Museums

AMS	Australian Museum Sydney
BMNH	British Museum (Natural History), London
MNVCr	Museo civico di Storia Naturale Verona
NMV	Museum of Victoria, Melbourne, Australia
ZMUC	Zoological Museum, University of Copenhagen or København

Abbreviations in taxonomical descriptions as well as figures

A1, 2	antenna 1, 2
acc.	accessory
art	article
Cx	coxal plate
Ep	epimeral plate
flag	flagellum
Gn1, 2	gnathopod 1, 2
IP	inner plate
LL	lower lip
Md	mandible
Mx1, 2	maxilla 1, 2
Mxp	maxilliped
OP	outer plate
P3-7	peraeopod 3–7
ped	peduncle

T	telson
U1–3	uropod 1–3
UL	upper lip
Us	urosome

Character matrix

The chosen characters were as follows:

Head

- (1.) *A1 length* (0) > A2; (1) ≤ A2
- (2.) *A2 peduncle article 1 ratio length: breadth* (0) ≤ 3; (1) > 3
- (3.) *ratio A1: body length* (0) ≥ 0.66% body; (1) < 0.66% body
- (4.) *A1 flagellum acc.* (0) many articles; (1) 2–1 articles; ; (2) lacking
- (5.) *A1 peduncle art 2* (0) < article 1; (1) ≥ article 1
- (6.) *A1 peduncle art 1* (0) < ceph.; (1) = ceph.; (2) > ceph.
- (7.) *A1 peduncle art 3* (0) ≤ 0.3 art 1 ; (1) 0.3–0.5 art 1; (2) ≥ 0.5 art 1
- (8.) *A1 flagellum arts* (0) <10; (1) 11–20; (2) 21–30; (3) >30
- (9.) *A2 peduncle art 5* (0) < flag.; (1) = flag.; (2) > flag.
- (10.) *A2 peduncle art 4* (0) >art 5; (1) =art 5; (2) <art 5
- (11.) *A2 nr. flagellum arts* (0) <9; (1) 10–15; (2) >15
- (12.) *Lateral cephalic lobes* (0) rounded; (1) subacute, blunt
- (13.) *Eyes* (0) medium; (1) small to absent; (2) large

Mouthparts

- (14.) *Mandible palp art 3* (0) ≥ half art 2; (1) < half 2 or lacking
- (15.) *Mandible palp art 2* (0) ≥3 setae; (1) 3–1 setae; (2) lacking
- (16.) *Mandible palp art 3* (0) ≥2 setae; (1) one distally; (2) lacking
- (17.) *Maxilliped outer plate : merus* (0) ≥ 0.5; (1) 0.5–0.2; (2) <0.2

Coxal plates

- (18.) *Ratio length Cx2 : Cx1* (0) <2; (1) 2–2.5; (2) 2.5–3; (3) >3
- (19.) *Cx2 ratio length : breadth* (0); ≥1.5; (1) < 1.5
- (20.) *Cx4 ratio length : breadth* (0) l>b; (1) l=b; (2) l<b
- (21.) *Cx4 distally excavated* (0) no; (1) yes

Gnathopods

- (22.) *Gnathopod 1 dactylus* (0) ordinary; (1) spoon-shaped
- (23.) *Gn 1 palm* (0) < half propodus length; (1) ≥ half propodus
- (24.) *Gn 1 palm angle about* (0) no one = 180°; (1) blunt = 180–150° ; (2) acute = 120°; (3) transverse = 90°

- (25.) *Gn 1, 2 propodus shape* (0) similar; (1) different
 (26.) *Gn 1 propodus shape* (0) rounded; (1) linear-rectangular; (2) triangular
 (27.) *Gn1 carpus* (0) short, length < 2 breadth; (1) l=2b; (2) l<2b
 (28.) *Gn1 merus* (0) short; (1) elongate; (2) freeprojecting
 (29.) *Gn1 ratio carpus : propodus* (0) < prop.; (1) = prop.; (2) > prop.
 (30.) *Ratio length propodus Gn1 : Gn2* (0) ≥0.75; (1) 0.75–0.33; (2) <0.33
 (31.) *Gn2 ratio propodus : coxa male* (0) ≥1; (1) 1–0.66; (2) <0.66
 (32.) *Gn2 ratio propodus:basis male* (0) ≥1; (1) 1–0.66; (2) <0.66
 (33.) *Gn2 ratio propodus:basis female* (0)) ≥1; (1) 1–0.66; (2) <0.66
 (34.) *Gn2 ratio propodus : coxa female* (0) ≥1; (1) 1–0.66; (2) <0.66
 (35.) *Gn2 palm male* (0) smooth; (1) toothed-serrated; (2) incision(s)
 (36.) *Gn2 palm female* (0) smooth; (1) toothed-serrated; (2) incision(s)
 (37.) *Gn2 carpus shape* (0) short, l<b; (1) ; elongate, l≥b
 (38.) *Gn2 merus shape* (0) not lobate; (1) lobate

Peraeopods

- (39.) *P4 ratio posterior margin of merus : propodus* (0) ≤1.33; (1) >1.33
 (40.) *P5 basis* (0) ovoid widened; (1) rectangularly widened; (2) slim like basis P4
 (41.) *P5 ratio anterior margin of merus : propodus* (0) ≤1.25; (1) >1.25
 (42.) *P5 merus tip reaching* (0) no carpus; (1) 0.25–0.75 carpus; (2) full carpus
 (43.) *P5 basis posterodistally* (0) no lobe; (1) small lobe; (2) medium lobe; (3) lobe wide and deep, reaching merus
 (44.) *P5 basis width ratio maximum : minimum* (0); 1–1.1 (1) 1.1–1.4; (2) 1.4–1.6; (3) 1.6–1.8; (4) >1.8
 (45.) *P6 basis* (0) ovoid widened; (1) narrow like P5; (2) rectangularly widened
 (46.) *P6 basis hindmargin* (0); harmonically rounded (1) straight
 (47.) *P6 basis posterodistal corner* (0) rounded lobe; (1) no lobe
 (48.) *P6 merus length anterior: posterior margin* (0) =1; (1) >1
 (49.) *P7 basis shape* (0) rounded; (1) narrow like P5; (2) rectangularly widened
 (50.) *P7 merus reaching* (0) no carpus; (1) <0.5 carpus; (2) >0.5 carpus; (3) all carpus
 (51.) *P7 ratio dactylus: propodus* (0) <0.5; (1) ≥0.5
 (52.) *P7 basis posterior margin* (0); convex; (1) concave; (2) straight *Epimeral plates, Uropods + Telson*
 (53.) *Ep3 posterodistally* (0) rectangular corner; (1) acute, 60–70°
 (54.) *U1 rami* (0) equal; (1) very different
 (55.) *U1 ratio peduncle : longer ramus* (0) ≤1; (1) 1–1.33; (2) >1.33
 (56.) *U2 ratio of rami* (0) > 66%; (1) ≤ 66%;
 (57.) *U2 ratio peduncle : longer ramus* (0) < 1; (1) > 1
 (58.) *U2 peduncle spination* (0) no to weak; (1) strong
 (59.) *U3 ramus ratio art 1 : art 2* (0) <1; (1) =1; (2) 1.1–1.9; (3) >2
 (60.) *U3 ramus spination* (0) no; (1) 1–3 spines; (2) many
 (61.) *Telson* (0); *length : breadth* ≤2 (1) ; *length : breadth* >2 (2) 3-dimensional

Schiecke (1973: 80 ff.) published in his doctoral thesis many suggestions about the morphological characters and their states in stenothoids in general. He surmises that the enlarged coxal plates are an advantage in a very densely structured environment such as cylindrical ramified branches in hydroids, bryozoans or algae, allowing stenothoids to “ride” on a branch gripping it with the paired anterior peraeopods from one side and with the posterior peraeopods from the other one, and hiding eggs or juveniles as well as the (usually) very thin posterior legs and uropods. Many species are known as associates with hydroids or bryozoans where they are observed to “steal” the little crustaceans collected and already paralyzed by the host from the tentacle-crown. But of course with stronger enlargement of Cx4 the vagility gets diminished and species with very large coxae are certainly very bad swimmers and probably detritus feeders. However, many stenothoids are excellent swimmers with an enlarged propodus on Gn2 and often with a long basis which affords great mobility, while Gn1 (inclusively Cx1) is extremely small.

It is remarkable that all mouthparts are always unusually long and narrow and it could be imagined that they all together function as a sucking device (it is said that the name steno-thoids stems from the narrow mouthparts, stenos meaning narrow in Greek). Mxp has reduced plates and Md has more or less reduced molars and palps, while pars incisivus and lacinia mobilis are very well developed with acute and robust “teeth”; also both maxillae have robust setae, which could help to divide the food parts already cut by the mandible.

In many stenothoids P3 4 are longer but weaker than P5–7, and all are kept parallel to the coxae and never twisted. Interesting are the quite often acutely lengthened meri (in P3, 4 anteriorly, in P5–7 posteriorly) which warrant an additional capacity against falling off the substrate.

Taxonomy

Genus *Proboloides* Della Valle

Della Valle, 1893: 907

Type species. *Metopa gregaria* Sars, 1882: 93, t. 4, fig. 6

Proboloides mainly occurs in the Atlantic, but nominal *Proboloides* species have been reported also from the Pacific, Indian and Antarctic oceans. Its species are often found living in deep waters and show a clear sexual dimorphism, usually their gnathopods are quite different in size and shape, often with a strongly incised Gn2 palm, with palmar corner well defined in females, but not defined in males, and robust peraeopods.

Diagnostic characters. A1 peduncle art 1 usually short, length < 3× width, subequal to cephalon; A1 usually shorter than 2/3 body length, A1 accessory flagellum

lacking. Md palp with a very short or lacking art3, poorly setose; Mx1 palp 2 arts; Mx2 inner plate ordinary; Mxp inner plates well separated, outer plates usually reduced (less than 0.2 of merus length). Ratio Cx2:Cx1 > 3. Cx2 length equal or more than 1.5 × the width. Gn1, 2 different in size and shape; Gn1 small, almost simple, rarely subchelate; carpus length equal to propodus; length of propodus Gn1 about half or less than half length of propodus Gn2; Gn2 palm has serrations or teeth, usually no incisions; Gn2 propodus is in males often, in females always smaller than Cx2; carpus shorter than wide, merus elongate. P5 basis linear, without posterodistal lobe; merus anterior margin shorter than 1.25 length of propodus anterior margin. P6, 7 basis expanded and lobate, merus tip reaching half to full length of carpus. Ep3 with acute posterodistal corner. U1 peduncle is longer than longer ramus. T length is shorter to equal the double width, triangular, laminar.

At the beginning of this study 16 species were known:

11 from the Atlantic, Pacific and Indian Ocean: *P. anophthalmus* Ledoyer, 1986, *P. calcaratus* (Sars, 1882), *chypeatus* (Stimpson, 1853), *P. grandimanus* (Bonnier, 1896), *P. gregarius* (Sars, 1895), *P. holmesi* Bousfield, 1973, *P. pacificus* (Holmes, 1908), *P. schokalskii* Gurjanova, 1946, *P. schuleikini* Gurjanova, 1946, *P. tundus* Barnard, 1962, *P. zubovi* Gurjanva, 1951.

5 members from Antarctic-Subantarctic region: *P. porcellanus* KH Barnard, 1932, *P. rotundus* (Stebbing, 1917), *P. stephensi* Ruffo 1949, *P. typicamimus* Andres, 1995, *P. typicus* (Walker, 1906).

The differences between the current diagnoses of *Metopoides*, *Probolooides*, *Scaphodactylus* and *Torometopa* are still quite small and not satisfactory:

Metopoides. Mouthparts ordinary. Long antennae with 2-articulate flag. acc.; unspecialized gnathopods; short coxal plates; basis P6, 7 with weakly lengthened merus.

Probolooides. Md palp may have a shortened third article, the inner plates of Mxp may be fused. Antennae robust with 0–1 articulate acc. flag.; gnathopods with sexual dimorphism, Gn1 much smaller than Gn2; coxal plates enlarged; basis P6, 7 with strongly lengthened and widened merus.

Scaphodactylus. Mouthparts ordinary. Antennae with 2-articulate acc. flag.; gnathopods without or with sexual dimorphism (there are two groups within the genus); Gn1 dactylus spoon-shaped excavated; coxal plates small; basis P5 rectilinear with posterodistal lobe lengthened and widened; P6, 7 merus very weakly lengthened and widened.

Torometopa. Mouthparts ordinary. Antennae with 0–2-articulate acc. flag.; gnathopods without or with sexual dimorphism; coxal plates small or large; basis P5 rectilinear with posterodistal lobe lengthened and widened to varying degrees; P6, 7 merus weakly to strongly lengthened and widened. In short, characters of *Metopoides* and *Probolooides* together, but P5 basis with posterodistal lobe, which might have evolved independently. Thus this genus was the least convincing one.

To fill the gaps with question marks in the first matrix (see also Krapp-Schickel 2009), I studied the following species in detail:

1) *Probolooides porcellanus* KH Barnard, 1932: 111–112, fig. 61

This species has a small posterodistal lobe on P5 basis (like *Torometopa* and different from all other *Probolooides*), but P6, 7 bases are not rounded (like in all *Torometopa*), but narrowing distad. Gn1, 2 show a striking similarity with those of *Mesometopa sinuata* Shoemaker, 1964 (female) from the American west coast, but P5–7 in that species are totally different, and the other *Mesometopa* species are Pacific arctic-boreal (southernmost locality is S. California).

This species thus fits in no existing genus, and a new one is erected:

***Malvinometopa* gen. n.**

urn:lsid:zoobank.org:act:17A26AB9-5D20-46FE-B5BA-4075DF82B8BD

Type species. *Probolooides porcellanus* KH Barnard, 1932

Diagnostic characters. Md palp with 3 arts, Mxp IP separated; Mx1, 2 unknown; A1, 2 peduncle strong, flagellum reduced to 4–6 arts. Cx4 not much wider than Cx2+3. P5 basis rectilinear, with small posterodistal lobe. P6, 7 basis narrowing distad, both with posterodistal small lobe reaching along half of ischium.

Etymology. The type species was collected from the pharynx of a large ascidian in the Falkland Islands, in Spanish Islas Malvinas.

Remarks. This genus has a posterodistal lobe on P5 basis like the members of *Torometopa*; it is different from all other known stenothoid genera by the rectangularly widened, distally narrowing basis of P6,7. In *Metopella* and *Mesoprobaloides* P5 is rectilinear without a posterodistal lobe, P6,7 are differently widened; in *Hardametopa* P5–7 all have a slender basis. The genera *Metopelloides*, *Stenothoides*, *Vonimetopa* and *Zaikometopa* differ in having a 1-articulate Md palp, while the palp is absent in *Parametopella*.

***Malvinometopa porcellana* (KH Barnard, 1932)**

Figs 1, 2

Probolooides porcellanus KH Barnard 1932: 111–112, fig. 61

Torometopa porcellana Barnard and Karaman 1991: 700

Material examined: Type material BMNH.

Redescription of type material:

Body smooth. Eyes rounded, large.

Length: 5–9 mm.

Antennae. A1 less than half of body length, peduncle robust, art 1 length about three times the width; acc. flag. absent, flagellum 6–7 arts. A2 subequal in length to A1, peduncle robust, art 4 < art 5, flagellum about as long as or shorter than peduncle art 5, with 7 arts.

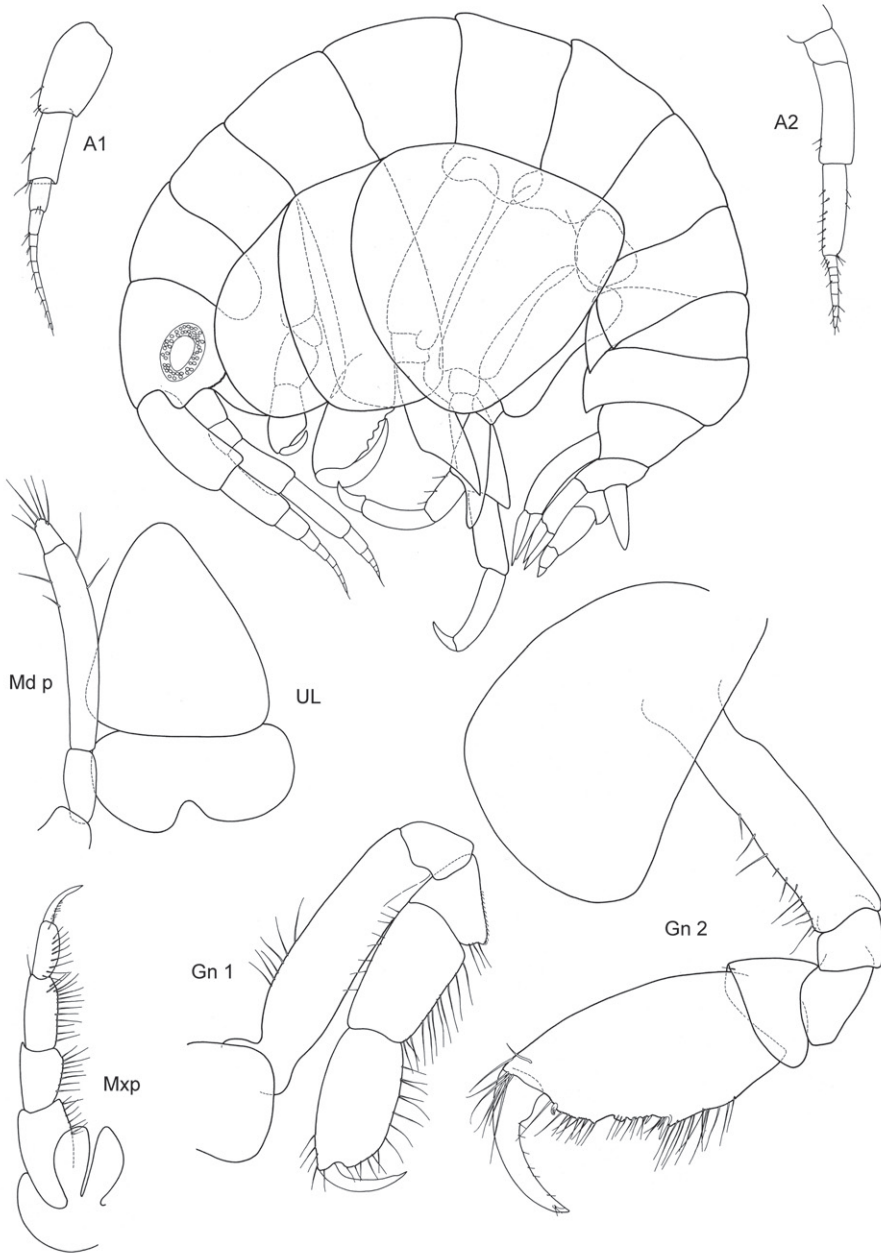


Figure 1. *Malvinometopa porcellana* (K.H. Barnard, 1932): Discovery Reports St. 51, Falklands.

Mouthparts. Md palp with 3 arts, art 1 and 2 unusually long, art 3 much shorter than $1/3$ length of art 2, with many distal setae. Mx 1, 2 unknown; Mxp IP not fused, $2/3$ length of ischium; OP vanishing; dactylus long, subequal to propodus.

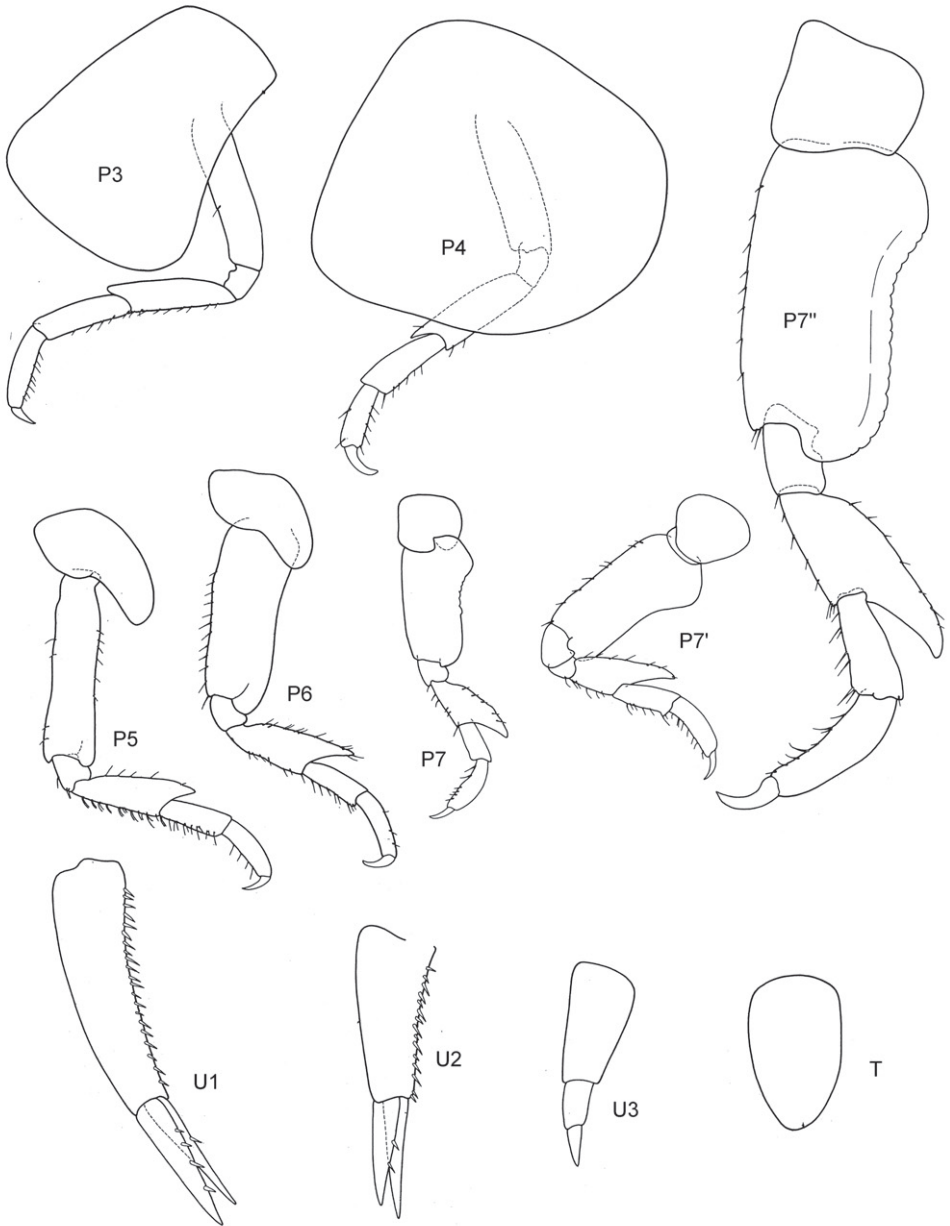


Figure 2. *Malvinometopa porcellana* (K.H. Barnard, 1932): Discovery Reports St. 51, Falklands.

Coxae. Cx2 with rounded anterior margin, straight behind, angle rounded without tooth; Cx3 trapezoid-shaped, distally widening, Cx4 not excavated, anterior and posterior margin rounded, about as long as wide.

Gnathopods. Gn1, 2 propodi similar in shape, different in size. Gn1 dactylus ordinary; propodus with parallel margins, palm not defined, about twice as long as wide; carpus longer than propodus, subtriangular, longer than wide, proximally wider than distally; merus incipiently chelate; all articles densely beset with setae. Gn2 length of propodus more than $2/3$ of Cx2; propodus subelliptical, twice the size of propodus Gn1; hind margin subequal to length of palm which has shallow incisions, palmar corner well defined by small tooth-shaped prolongation but no U-shaped incision. Dactylus same length as palm. Gn2 carpus shorter than wide, cup-shaped, merus not lobate.

Peraeopods. P4 merus anterodistal margin somewhat lengthened. P5 dactylus half length of slim propodus; merus posterodistal margin not reaching half of carpus length, basis rectilinear with short posterodistal lobe. P6 basis hind margin straight, with posterodistal lobe similar to P5, merus posterodistal corner acutely lengthened and somewhat widened, not reaching to half of carpus length. P7 basis proximally widened with lobe, distad narrowing with small posterodistal lobe, hind margin crenulate and excavated; merus lengthened and widened, reaching about half carpus length.

Uropods. U1 peduncle with many short robust setae, nearly twice as long as subequal rami; U2 peduncle also beset with many small robust setae, longer than longer ramus, rami somewhat unequal; U3 totally unarmed, peduncle longer than ramus, art 1 of ramus longer than art 2.

Telson. Not reaching end of peduncle U3; less than twice as long as wide; distally tongue-shaped rounded, naked.

Sexual differences. Small.

Distribution. Falkland Islands.

Ecology. From pharynx of a large ascidian.

Remarks. *M. porcellanus* has extremely shortened A1, 2, no Mxp OP, a stout Gn1 and aberrant P6, 7: is this an adaptation to the life inside the pharynx of ascidians, where they certainly cannot swim but only crawl? All we know is that space there is at a premium.

2) *Proboloides typicus* (Walker)

Also this species is very sparsely described and figured. I found material at the Australian Museum Sydney, and compared it with one specimen deposited at the Verona Museum by Bellan-Santini. Both fit the written description by Schellenberg well, and this species clearly belongs in *Metopoides*:

Metopoides typicus (Walker, 1906)

Figs 3, 4

Proboliella typica Walker 1906: 14; 1907: 20–21 t.6 fig. 10

Proboloides typica Schellenberg 1926: 323–24 fig, 41; De Broyer et al. 2007: 213 not *Proboloides typica* KH. Barnard 1932: 109, f. 57
Metopoides sp. Bellan-Santini and Ledoyer 1974: 700 fig. 38 B

Material examined: Cape Bird, EBS, C3-C4, 70–100m, 14.12. 1971, several spec.; tide crack, near Cape Spencer, White Island, Ross Ice Shelf, 78°01'S, 167°20'E, 28.XII. 1976, coll. P. Ensor (AMS P 25504); Southern Rookery, Cape Bird, Ross Island, Antarctica (approx. 77°13'S, 166°27'E) AM P.80875 (1 slide); slide of "*Metopoides* sp.", Kerguelen, MNVCR.

Redescription after material from the Australian and Verona Museum:

Body smooth. Eyes rounded, medium size.

Length. 3–3,5 mm.

Antennae. A1 less than 2/3 of body length, peduncle robust, art 1 shorter than three times wide; acc. flag. with 2 (very small) articles, flagellum 10 arts. A2 subequal in length to A1, peduncle robust, art 4 somewhat > art 5, flagellum about as long as peduncle art 5, with 7 arts (Walker: without acc. flag., A1 reaching to the middle of the flagellum of A2).

Mouthparts. Md incisor and raker spine row well developed; no clear molar cusp; palp with 3 arts, art 3 about 1/3–1/2 length of art 2, with 3 distal long setae (Walker: Md palp lacking third art, therefore creating a new genus *Proboliella*; but Schellenberg already noticed 1926: 323 fig. 41, that there is a well-developed third article). Mx 1 IP with 1 distal seta, OP with 6 strong robust setae, palp with 2 arts; Mx 2 inner plate ordinary, shorter than outer; Mxp IP not fused, 2/3 length of ischium; OP narrow, well developed, reaching more than half of merus length; dactylus long, subequal to propodus.

Coxae. Cx2 with rounded anterior margin straight behind, angle rounded with small tooth; Cx3 narrow with parallel margins, Cx4 not excavated, inferior and posterior margin rounded, about as long as wide.

Gnathopods. Gn1, 2 propodi different in size and shape. Gn1 dactylus ordinary; propodus with parallel margins, palm well defined (corner about 120°), somewhat longer than half length of propodus, about twice as long as wide; carpus shorter than propodus, triangular, longer than wide, merus incipiently chelate. Gn2 length of propodus more than 2/3 of basis in male, less in female; propodus subelliptical, twice the size of propodus Gn1; hind margin half length of palm which is in male and female with incisions, palmar corner well defined by acute tooth-shaped prolongation and U-shaped incision. Dactylus clearly shorter than palm, probably working together with robust setae of palmar corner. Gn2 carpus shorter than wide, cup-shaped, merus not lobate.

Peraeopods. P4 merus anterodistal margin somewhat lengthened. P5 dactylus long, weak, much longer than half of slim propodus; merus posterodistal margin not reaching half of carpus length, basis slender without lobe. P6 basis hind margin harmonically rounded, clearly longer than wide, merus posterodistal corner acutely lengthened but not widened, not reaching to half of carpus length. P7 basis and merus similar to P6.

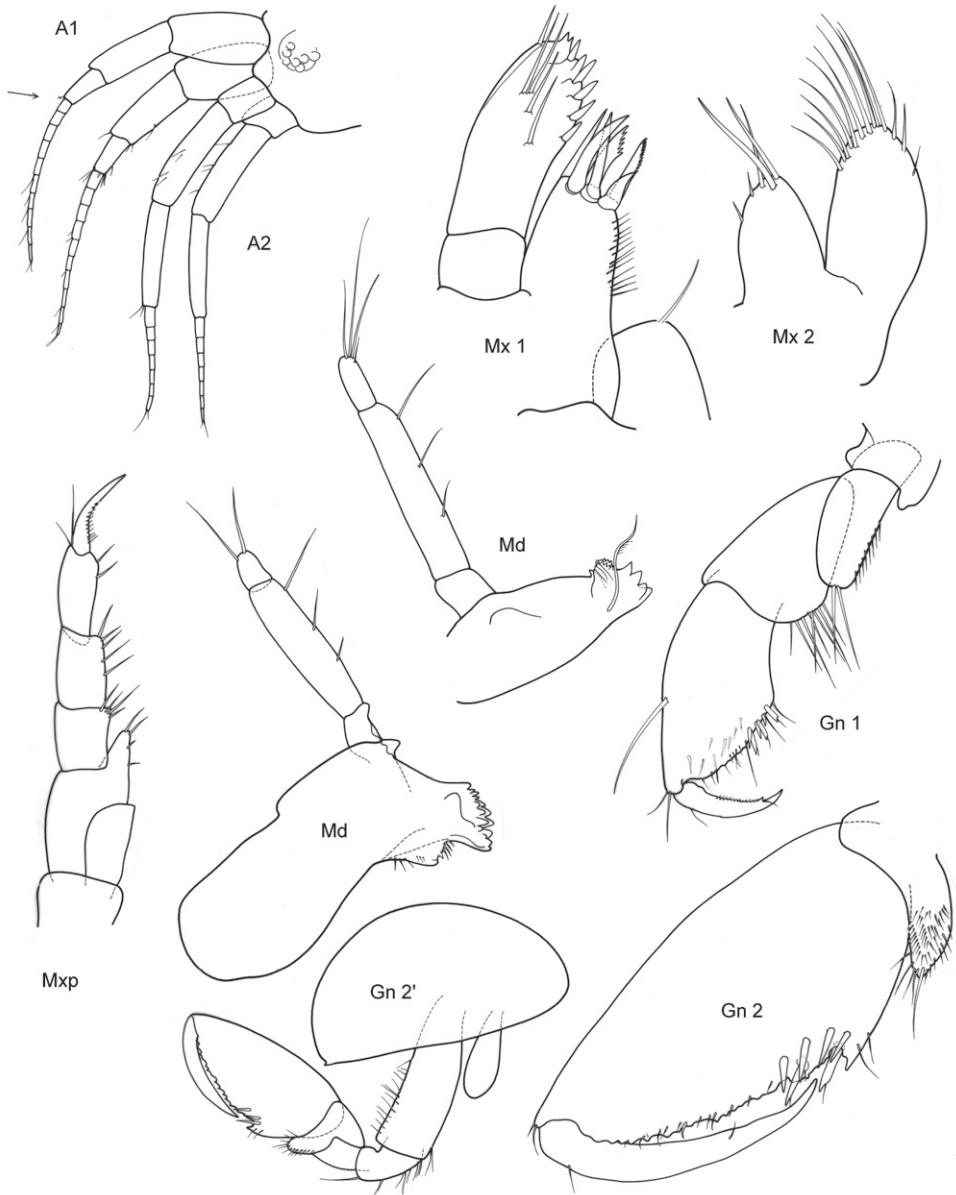


Figure 3. *Metopoides typicus* (Walker, 1906): Cape Bird, Southern Rookery; AMS.

Epimeral plates. Ep3 posterodistally lengthened to triangular corner.

Uropods. U1 peduncle slightly longer than subequal rami, with many robust setae; U2 peduncle longer than shorter ramus, rami clearly unequal; U3 peduncle shorter than ramus, first article of ramus shorter than peduncle, ramus art 2 about $\frac{3}{4}$ of art 1.

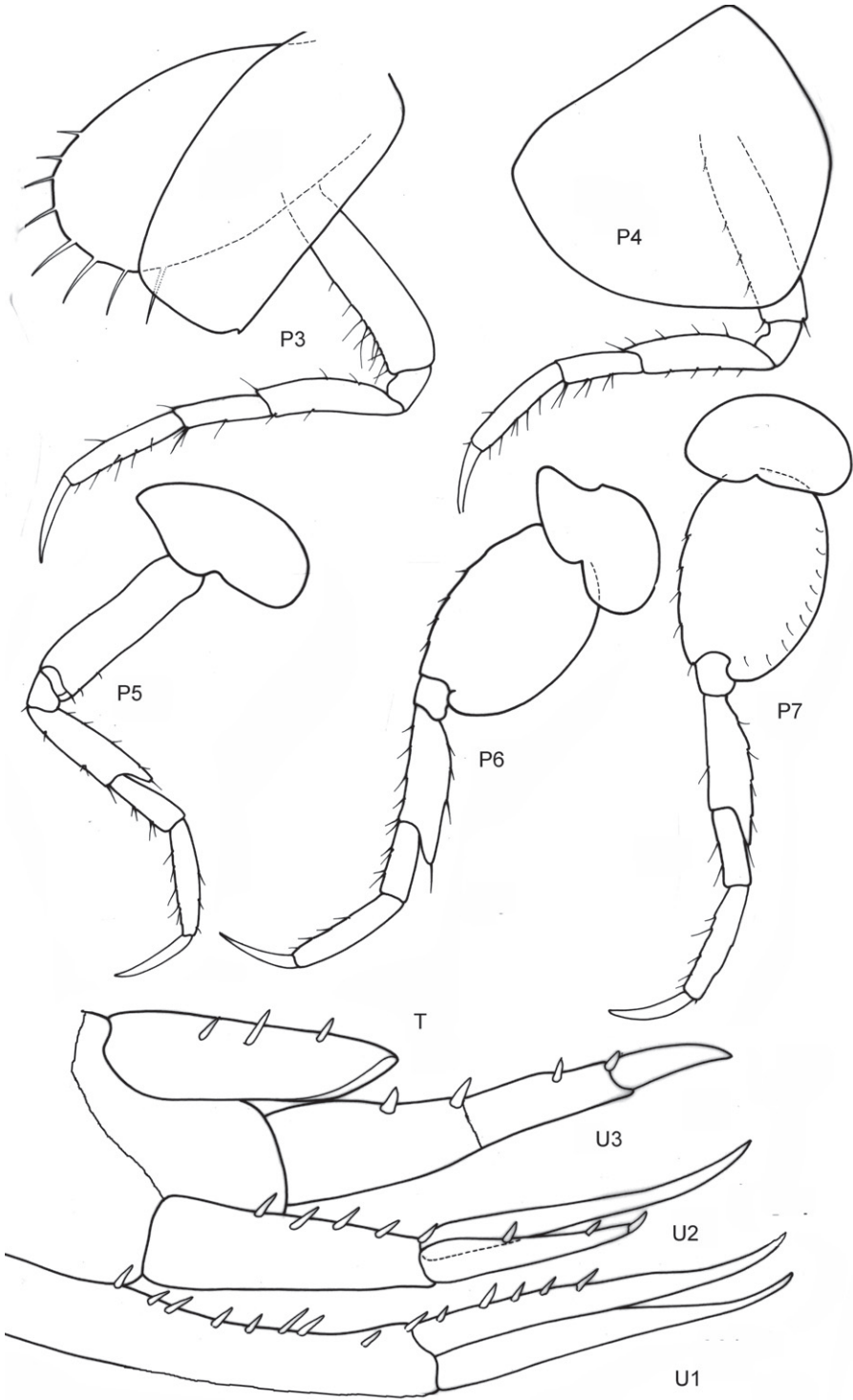


Figure 4. *Metopoides typicus* (Walker, 1906): Cape Bird, Southern Rookery; AMS.

Telson. Not reaching end of peduncle U3; about twice as long as wide; distally triangularly pointed, medio-laterally with 2–3 robust setae.

Sexual differences. Probably small.

Distribution. Antarctica, Hut Point near Mc Murdo, 77.47°S (Walker, 1906, 1907); S-Victoria Land, Gauß Station (Schellenberg 1926); White Island, Ross Ice Shelf, 78°01'S, 167°20'E, (AMS P 25504); Cape Bird, Ross Island, Southern Rookery, 77°13'S, 166°28'E (AMS P 80875).

Ecology. Steeply sloping rock bottom with encrusted bryozoans and hydroids.

Remarks: As this species clearly has an accessory flagellum (although tiny), unspecialized gnathopod propodi and neither much lengthened nor widened merus on P5–7, it has to be placed in the genus *Metopoides*, and even is a very “typical” representative of that genus.

3) *Proboloides stephensi* Ruffo, 1949

Shortly after the war the possibility to check foreign literature was restricted. As only few characters were illustrated, the character states included in the matrix most probably were not always appropriate.

Until type material of *Metopa rotunda* can be checked, this species is synonymized with question mark to Stebbing's species “*Metopa rotunda*”. In any case it should belong to *Metopoides* for many plesiomorphic character states.

Metopoides rotundus (Stebbing, 1917)

Fig. 5

Metopa rotunda Stebbing, 1917: 39–40, pl. XCVIB; K.H. Barnard, 1940:444; Griffiths, 1974: 326

? *Proboloides stephensi* Ruffo, 1949: 15, fig. 1 (12–18), fig. 2 (1–5), fig. 3 (1)

? *Torometopa stephensi* Barnard & Karaman, 1991: 700

Proboloides rotundus Barnard & Karaman, 1991: 696

Material examined. Type material of *Proboloides stephensi* MNVCr.

Redescription: Body smooth. Eyes rounded, large.

Length. Male 3,5 mm.

Antennae. A1 = A2, A1 less than half of body length, peduncle robust, art 1 length about three times the width; acc. flag. with 2 arts, flagellum 12 arts. A2 subequal in length to A1, peduncle robust, art 4 ≥ art 5, flagellum about as long as peduncle art 5, with 9 arts.

Mouthparts. Md palp with 3 arts, art 1 and art 3 subequal, art 3 longer than 1/3 art 2, with 2 long distal setae. Mx 1 palp with 2 arts. Mxp IP separated, OP longer than half ischium; dactylus as long as propodus.

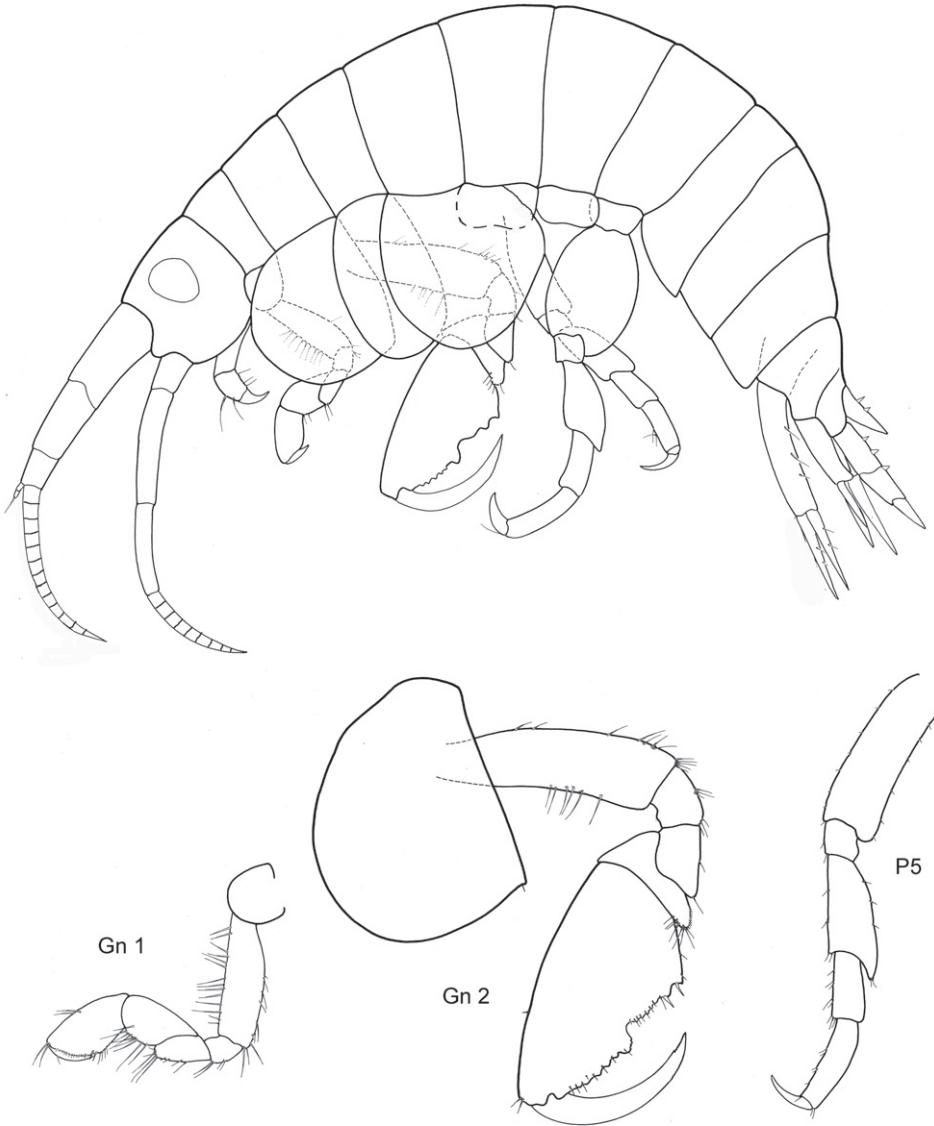


Figure 5. *Proboloides stephensi* Ruffo, 1949: Antarctica (70°23'S, 82°47'W); MCV.

Coxae. Cx2 with rounded anterior margin, straight posterior one, angle rounded with small tooth; Cx3 with parallel margins, Cx4 not excavated, anterior and posterior margin rounded, about as long as wide.

Gnathopods. Gn1, 2 propodi similar in shape, different in size. Gn1 dactylus ordinary; propodus triangular, palm well defined, about twice as long as wide, about as long as hind margin; carpus shorter than propodus, trapezoid, longer than wide, with parallel margins; merus with very short distal free margin. Gn2 length of propodus =

Cx2; propodus more than twice the size of propodus Gn1; hind margin much shorter than length of palm which has shallow incisions and crenulations, palmar corner well defined by small tooth-shaped prolongation but no U-shaped incision. Dactylus shorter than palm. Gn2 carpus shorter than wide, cup-shaped, merus not lobate.

Peraeopods. P5 dactylus half length of slim propodus; merus posterodistal margin not reaching half of carpus length, basis rectilinear, width proximally and distally subequal, posterodistally rounded, but not lobed. P6, 7 similar, basis hind margin rounded, merus posterodistal corner shortly lengthened and somewhat widened, not reaching to half of carpus length.

Epimeral plates. Ep3 posterodistal corner rectangular, but rounded.

Uropods. U3 peduncle shorter than ramus, art 1 of ramus longer than art 2; peduncle with one short robust seta distally, ramus art 1 with 2 robust setae.

Telson not reaching end of peduncle U3; less than twice as long as wide; distally pointed, marginally two robust setae.

Sexual differences. Females unknown.

Distribution. Antarctica, 70°23'S, 82°47'W (?*P. stephensi* Ruffo, 1949). South Africa (*P. rotunda* Stebbing, 1917).

Depth. 42 fathoms = 76,8 m (*P. rotunda*, Stebbing 1917: 40)

After Barnard and Karaman (1991: 696) the genus *Probolooides* has its distribution in the Atlantic Ocean, S-Africa and the Antarctica. Therefore it was important to check also non-Antarctic species.

4) ? *Probolooides holmesi* Bousfield, 1973

? *Probolooides holmesi* Bousfield, 1973

Figs 6, 7

Probolooides holmesi Bousfield, 1973: 89, fig. 16 (2)

Remarks. Although the shape of the gnathopods (especially the simple Gn1) creates doubt if it could not belong in *Metopa* or *Stenula*, checking of the mouthparts showed at least that this species has a Md palp with 3 arts and a palp of Mx1 with ? 2 arts (although the articulation is not clear, see Bousfield 1973: 98). It is different from the other Atlantic members, but for the time being it should remain in the genus *Probolooides*.

At the Verona Museum I found a tiny specimen called "*Metopa* sp." (1,5 mm) which is extremely similar to *Probolooides holmesi*, except the rounded palmar corner (see Fig. 6, 7 and compare to Bousfield 1973 fig. 16 (2)); also here there seems to be a fine indistinct line in Mx1 palp. I am adding the illustration also to stress the fact how small the differences between the genera are, and to show that also the genus *Metopa* has to be included in this basic group of stenothoid genera.

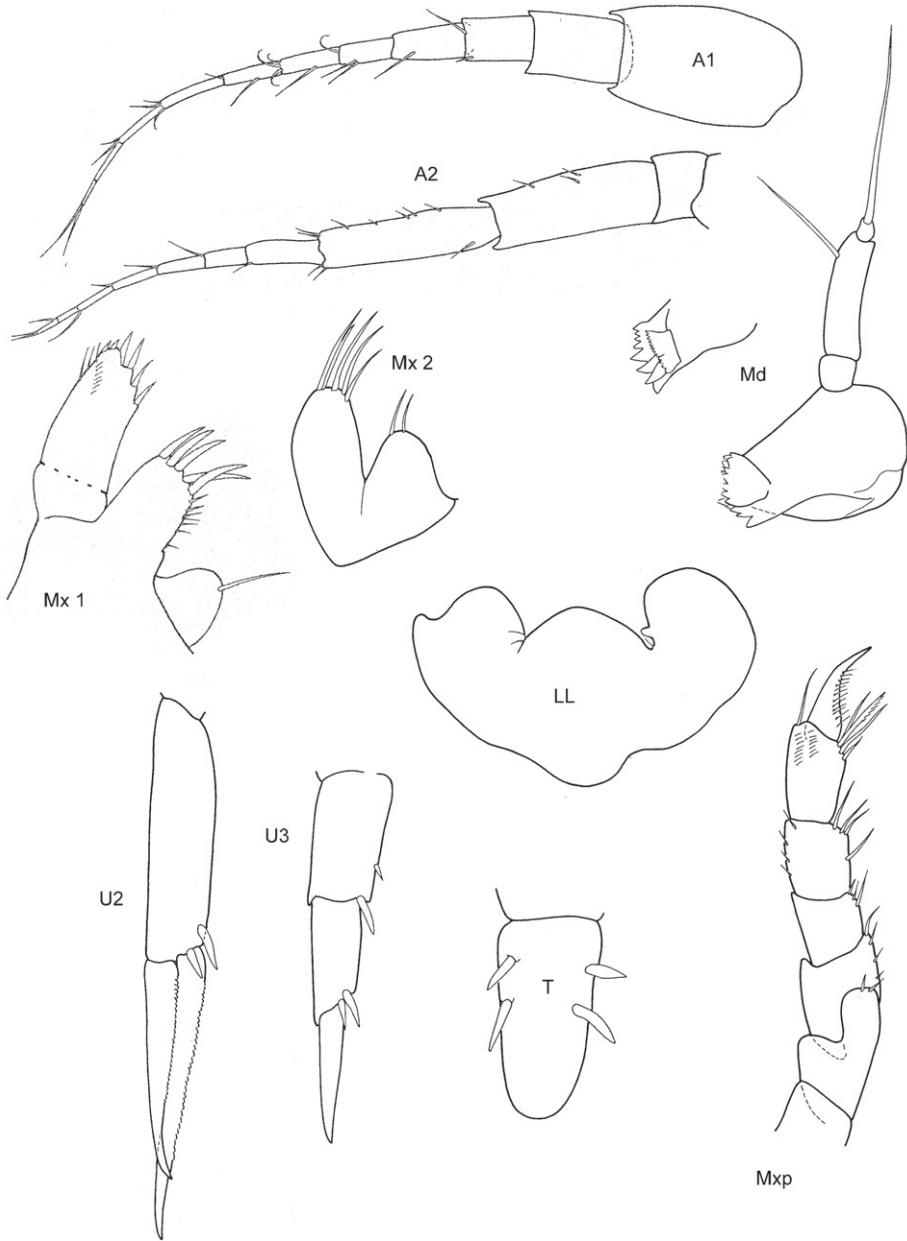


Figure 6. *?Proboloides holmesi* Bousfield, 1973: Raunefjorden near Bergen; MCV.

Distribution. S of Cape Cod; Vineyard Sound, Elizabeth Islands, Buzzard Bay (Bousfield 1973).

Ecology. Mainly on sandy and shelly sand bottoms, among hydroids and bryozoans, in depth of 5–30 m (Bousfield 1973: 89).



Figure 7. *?Proboloides holmesi* Bousfield, 1973: Raunefjorden near Bergen; MCV.

5) *Stenothoe aequicornis* Stephensen, 1931

During a stay at the Copenhagen Museum I checked Stephensen's type material of this species, as Barnard and Karaman (1991: 698) remarked "gnathopod 1 wrong, mouth-parts unknown". And they were right: there is no doubt about a clearly developed 3-ar-

articulated Md palp and therefore this species cannot be a member of *Stenothoe*, where there is no Md palp at all. Less clear is the structure of the palp of Mx1: as often in other specimens, the articulation is not easily seen (Fig. 8, 9). But this character should not be the only one deciding if a species belongs to *Metopa* or to *Proboloidea*, and the shape of gnathopods brings this material into the vicinity of the latter.

***Proboloidea aequicornis* (Stephensen, 1931)**

Figs 8–10

Stenothoe aequicornis Stephensen, 1931: 198, fig. 59

Material examined. Type material of *Stenothoe aequicornis* ZMUC.

Redescription.

Body smooth. Eyes rounded, small.

Length. Male 5 mm.

Head. Lateral cephalic lobes bluntly angular.

Antennae. A1 subequal A2 or A1 scarcely > A2. A1 peduncle robust, art 1 length about 2–3 x the width; art 3 only 1/3 of art 1 length; acc. flag. with 2 arts, flagellum about 1,5 x length of peduncle, 12–14 arts. A2 subequal in length to A1, peduncle subequal to flagellum, peduncle robust, art 4 ≥ art 5, flagellum with 9–11 arts.

Mouthparts. Md palp with 3 arts, art 1 and art 3 subequal, art 3 longer than 1/3 art 2, with 1 long distal seta. Mx 1 palp with 2 arts (but articulation not easy to see, cf. fig. 8, 9). Mxp IP separated, OP longer very short; dactylus as long as propodus.

Coxae. Cx2 with rounded anterior margin, straight or even somewhat concave behind, front angle rounded without tooth; Cx3 with trapezoid-shaped margins, Cx4 not excavated, anterior and posterior margin rounded, wider than long.

Gnathopods. Gn1, 2 propodi different in size and shape. Gn1 dactylus ordinary; propodus elongate, about 3x as long as wide, palm well defined, much shorter than hind margin; carpus longer than propodus, triangular, nearly 3x longer than wide, with parallel margins; merus with very long distal free margin. Gn2 length of propodus > Cx2; propodus about 3x the size of propodus Gn1; hind margin much shorter than length of palm which has shallow incisions and crenulations, palmar corner scarcely defined by group of robust setae, no U-shaped incision. Dactylus subequal to palm. Gn2 carpus very short, cup-shaped, merus acutely lobate.

Peraeopods. P5 dactylus > half length of slim propodus; merus posterodistal margin not reaching end of carpus length, basis rectilinear, width proximally and distally subequal, posterodistally rounded, but not lobed. P6 basis hind margin straight, merus posterodistal corner acutely lengthened and widened, reaching to end of carpus length; P7 similar to P6, but basis hind margin regularly rounded.

Epimeral plates. Ep3 posterodistal corner acute, but rounded at the apex.

Uropods. U3 peduncle shorter than ramus, art 1 of ramus subequal to art 2; peduncle with 3 robust setae distomarginally, ramus art 1 with 1 robust seta.

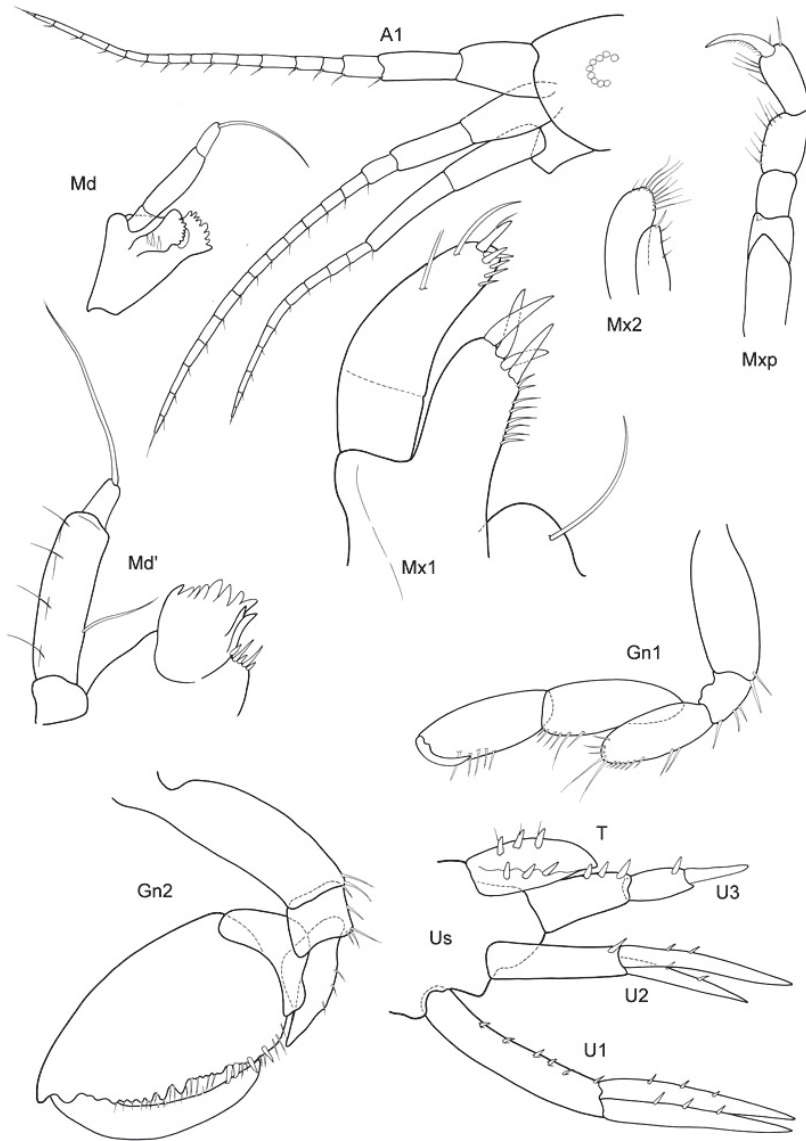


Figure 8. *Probolooides aequicornis* (Stephensen, 1931): after typical material from Atlantic, between Faroes and Iceland.

Telson. Not reaching end of peduncle U3; less than twice as long as wide; distally pointed, marginally 3 robust setae.

Sexual differences. Females unknown.

Distribution. Between Faroes and Iceland, 375 m depth.

At the Verona Museum I looked for the only species of the genus *Torometopa* cited in Barnard and Karaman (1991), where there is a question mark behind the genus name:

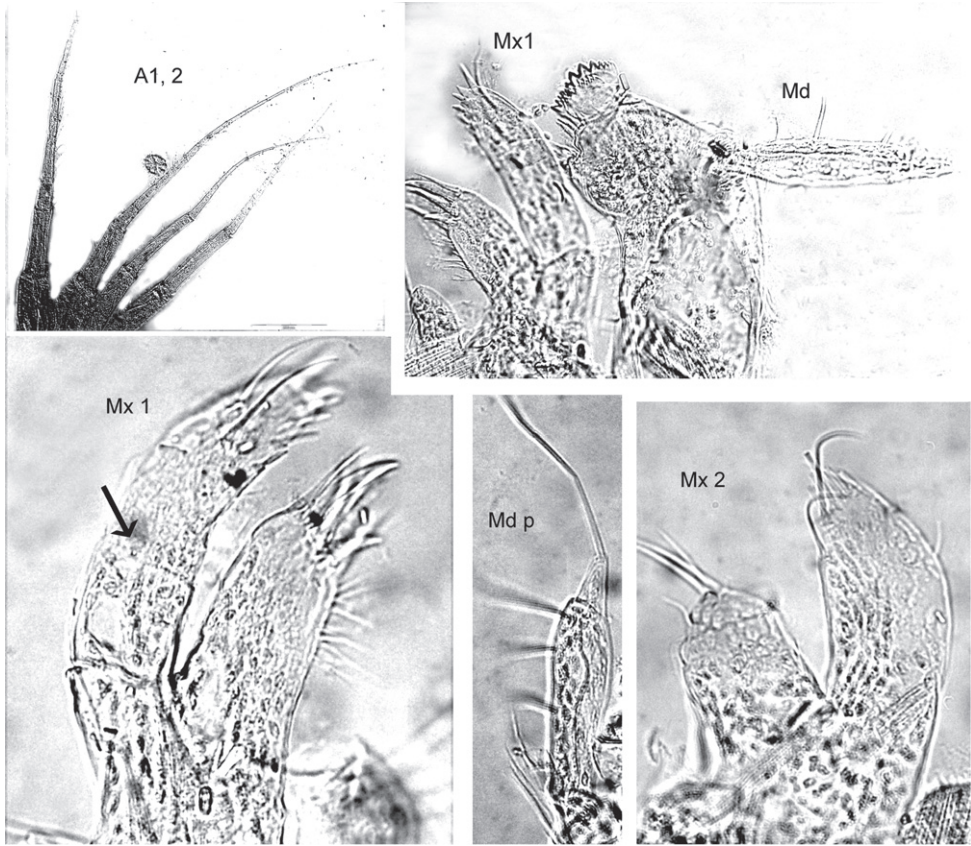


Figure 9. *Proboloides aequicornis* (Stephensen, 1931): as above, photographs of the material taken with Olympus BX51 with cell imaging software.

6) *Proboloides armata* Ledoyer, 1986: 966, fig. 381, 382 A

Torometopa? armata Barnard & Karaman, 1991: 700

It is the unique (female) type specimen from Îles Glorieuses N of Madagascar, from 3718 m depth.

Unfortunately I could not examine the slide and confirm the drawings of the sub-rectangularly widened Gn1 propodus and the 1-articulated Md palp, both very unusual characters in our treated group, as this type must be deposited elsewhere.

But at the Victoria Museum Melbourne I found a species from the Bass Strait from 770 m clearly belonging also to this basic species-complex of stenothoids, having a posterodistal lobe on P5 basis. To my big surprise it turned out that this species too had a 1-articulate Md palp.

As this character-combination does not fit any of the extant stenothoid genera, a new one was erected:

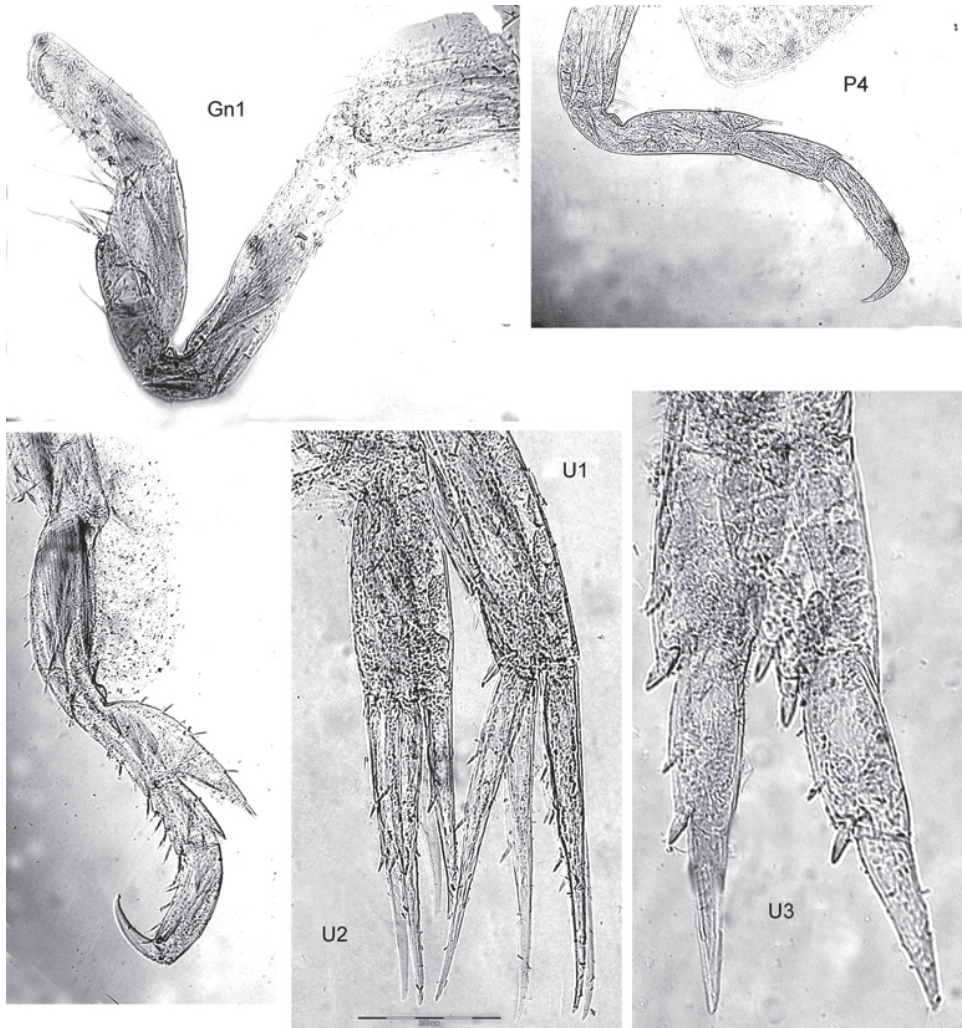


Figure 10. *Proboloides aequicornis* (Stephensen, 1931): as above, photographs of the material taken with Olympus BX51 with cell imaging software.

***Victometopa* gen. n.**

urn:lsid:zoobank.org:act:5DA70786-2BC5-415E-9953-E2FA6850218F

Type species. *Victometopa rorida* sp. n.

Probably also included: *Victometopa armata* (Ledoyer, 1986), comb. n.

Diagnostic characters. Md palp with 1 art, Mxp OP reduced. P5 basis rectilinear, with posterodistal lobe. P6, 7 basis widening.

Etymology. The stem -metopa combined with the first letters of “Victoria”, for expressing admiration for the rich collection at the Victoria Museum Melbourne (Australia).

***Victometopa rorida* sp. n.**

urn:lsid:zoobank.org:act:29F3DCFA-418C-4865-BA45-98F22273BFB8

Figs 11, 12

Holotype. Male 4.4mm. Cruise 79-K-1, Stn 34, 30°38.7'S, 148°49.4'E, Flinders Canyon, eastern Bass Strait, 770 m, 27.3.1979. Sediment: shell/sand, gear: dredge. MVM J 39597.

Paratype. Male 4.2mm. Same locality.

Etymology. The Latin adjective *roridus* means “set with dew” and should stress the “pearls” on the Cx3 in this species.

Description. *Length.* 4.2 - 4.4 mm

Body. Smooth. P3–7 all clearly prehensile, with falcate-concave, strikingly long merus and strong dactylus opposing with spinose propodus.

Head. Lateral cephalic lobes subacute or blunt, triangular. Eyes rounded, medium.

Antennae. A1: body length ≥ 0.66 body, ped. art 1 l:b >3 ; ped. art 2 \geq art 1; art 1 = cephalon; ped. art 3 ≤ 0.3 art 1; acc. flag. absent; flagellum arts 11–20. A2 ped. art 5 $>$ flag., ped. art 4 = art 5, nr. flag. arts ≤ 9 (A2 broken into pieces, thus indications not totally sure).

Mouthparts. Mdb palp one long article, on tip a fine articulation-line visible, marginally no setation, distally 1 long and 1 shorter seta. Mxp outer plate reduced.

Coxae. Cx2:Cx1 ratio of length >3 . Cx2 l:b (l=parallel post. margin) < 1.5 . Cx3 unusually widened, nearly as long as wide, distoposterior margin with strong “pearls” or stridulation ridges. Cx4 l**<**b, distally not excavated.

Gnathopods. Gn1 dactylus ordinary. Gn1 palm subequal to half propodus length; propodus palm angle 180–150°, blunt; propodus shape rounded, l ≤ 2 b; carpus l > 2 b; merus free projecting; carpus longer than propodus. Gn1 propodus < 0.33 Gn2 propodus. Gn1, 2 propodus shape different. Gn2 propodus \geq coxa and basis in male, palm in male smooth, only at dactylus-insertion some serrations; carpus very short, merus small, subquadrangular, not lobate.

Peraeopods. In all dactylus clearly longer than propodus. P3, 4 merus long, falcate curved, nearly twice the length of propodus. P5 basis distally somewhat widened but strongly lengthened to lobe maximal to minimal breadth 1.4–1.6; merus also nearly twice the length of propodus, posterodistal tip neither lengthened nor widened. P6 basis hind margin with straight margins, merus anterior and posterior margin subequal, distally not lengthened, reaching no carpus. P7 basis wider than in P6, but posterior margin also rather straight.

Epimeral plates. Ep3 posterodistally rectangular corner.

Urosome. U1 rami equal. U1 peduncle longer than ramus. U2 rami different, the shorter is longer than 0.66 % of the longer one, peduncle is longer than rami, spination weak. U3 with very long peduncle, much longer than ramus; ramus art 1:2 < 1 , spination poor.

Telson. l:b ≤ 2 , distally rounded, marginally with two strong robust setae.

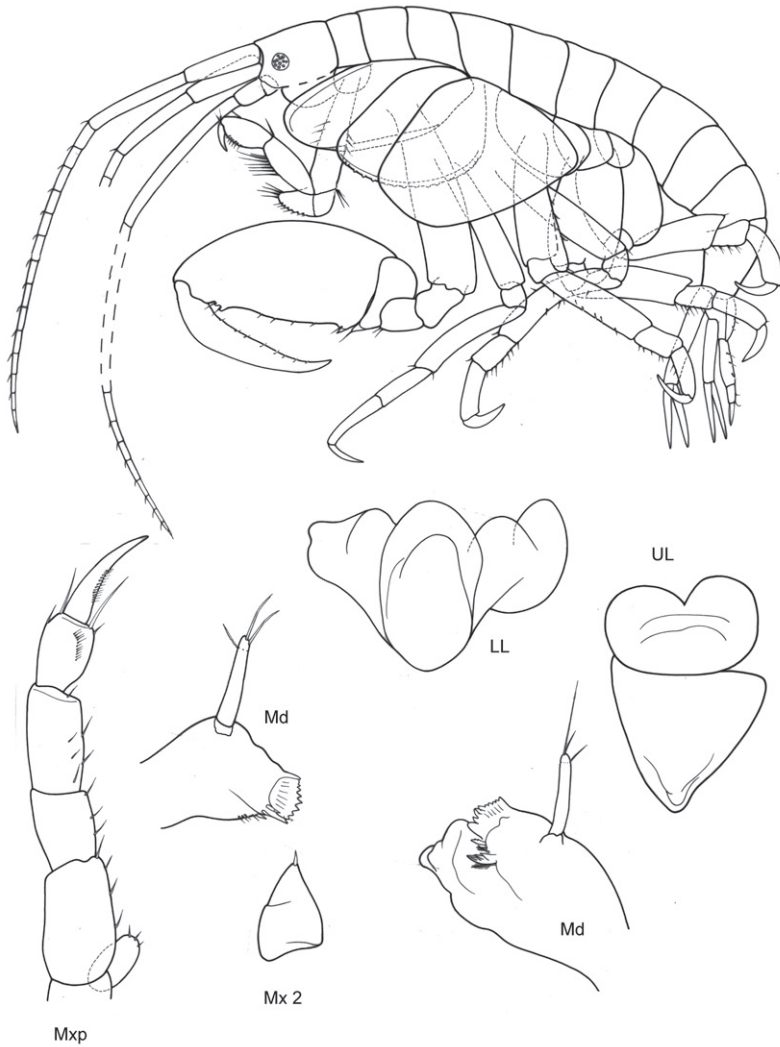


Figure 11. *Victometopa rorida* gen. n. sp. n.: Habitus ? male 4.4 mm; mouthparts UL, Mx1, 2 Md, LL, Mxp.

Cladistic analysis

Figure 13, 14.

A matrix of 38 species and 61 characters was built (Fig. 13): all presently known species in the genera *Proboloides*, *Torometopa* and *Scaphodactylus* were included. A hypothetical *Gammarus* species was chosen as out-group (see also Krapp-Schickel 2009, Fig. 5 without the species of *Metopoides*).

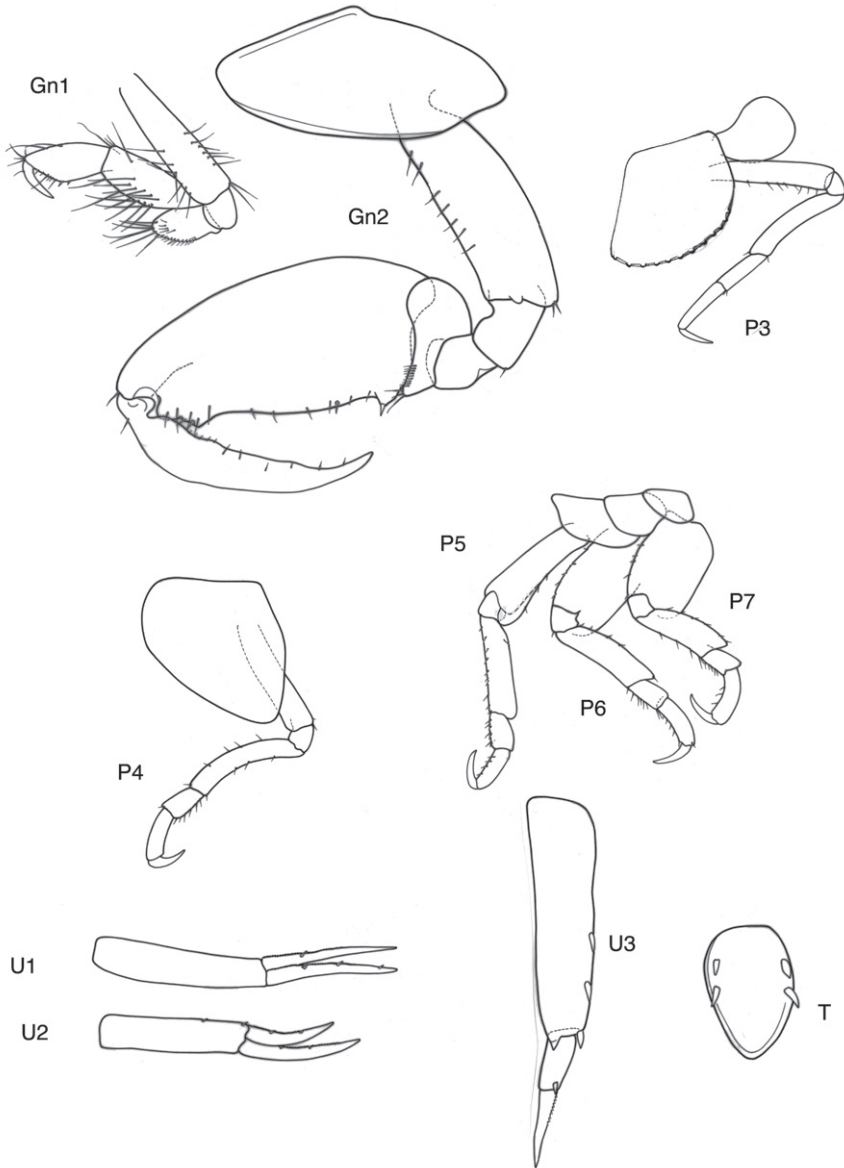


Figure 12. *Victometopa rorida* gen. n. sp. n.: Gn1, 2 = gnathopod 1, 2; P3-7 = pereopods 3-7; U1-3 = uropods 1-3; T = telson.

The programs MacClade 4.06 (Maddison and Maddison 2003) and PAUP 4.0B.10 (Swofford 2002) were applied. Using 38 taxa and 61 characters a heuristic analysis with a hypothetical *Gammarus* as an outgroup - species was performed and the majority rule consensus tree of 28 trees illustrated in Fig. 14. The difference between the trees concerned only the arrangement within the groupings.

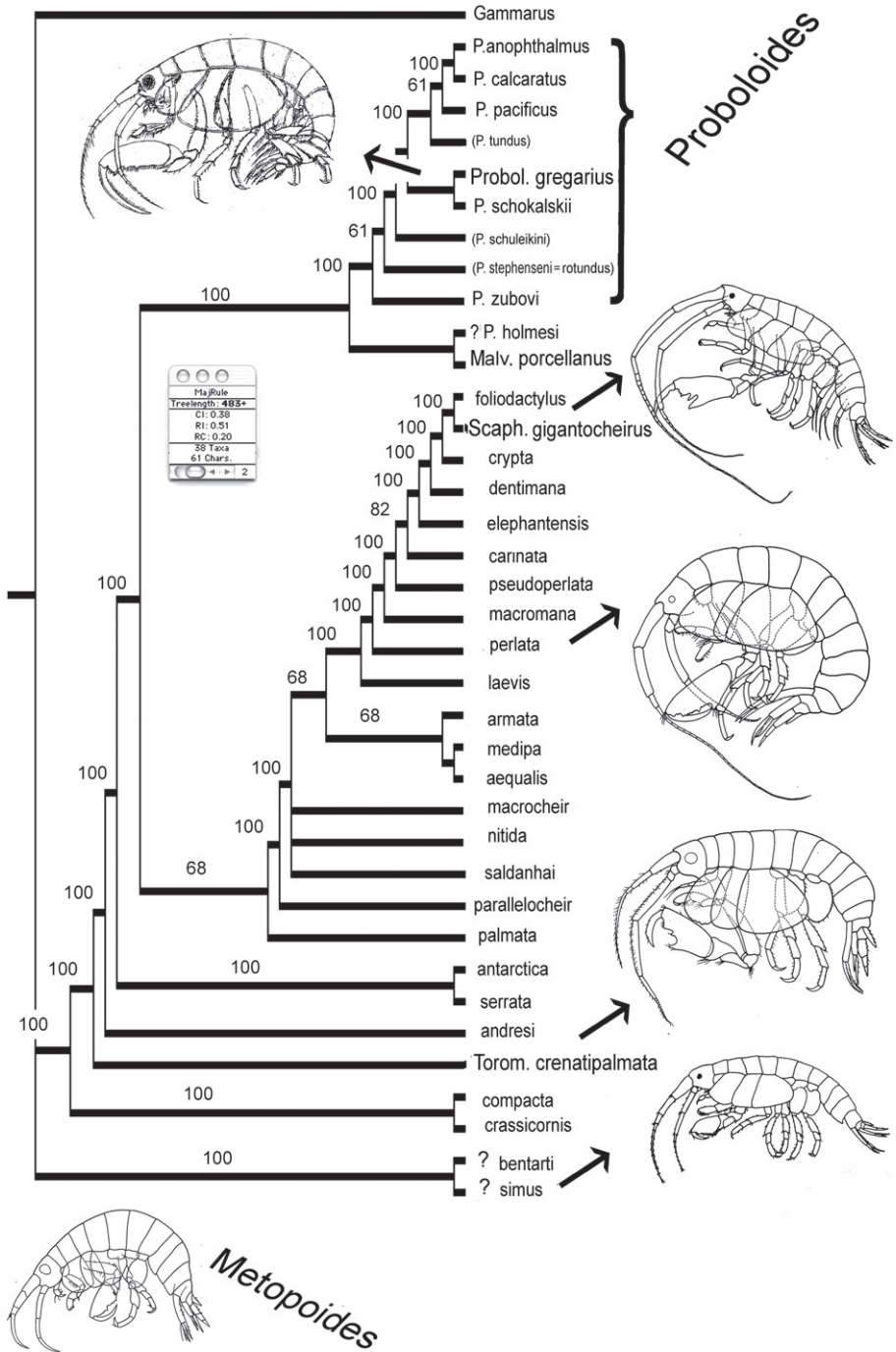


Figure 14. Heuristic analysis using 38 taxa and 61 characters: majority rule tree of 28 trees with length = 483. Genera abbreviated with more than one letter indicate type species; names written with small letters indicate that species are put in synonymy.

Heuristic search settings:

Optimal criterion = parsimony
Characters were unweighted and unordered
Gaps are treated as “missing”
Multistate taxa interpreted as polymorphism
Starting tree(s) obtained via stepwise addition
Addition sequence: random
Number of replicates = 50
Starting seed = 1191736759
Number of trees held at each step during stepwise addition = 7
Branch-swapping algorithm: tree-bisection-reconnection (TBR)
Steppest descent option not in effect
Initial “MaxTrees” setting = 200 (will be auto-increased by 100)
Branches collapsed (creating polytomies) if maximum branch length is zero
‘MulTrees’ option in effect
Topological constraints not enforced
Trees are unrooted
Total number of rearrangements tried = 46863460
Score of best tree(s) found = 486
Number of trees retained = 28
Tree length = 483
CI = 0,38
RI = 0,51
RC = 0,20

Results

At the beginning of the present analysis 16 species were cited for *Proboloidea*:

Eight species were reported from the Atlantic or Arctic Ocean: *P. calcaratus*, *clypeatus*, *grandimanus*, *gregarius*, *holmesii*, *schokalskii*, *schuleikini*, *zubovi*. In most species at least the females have a pronounced palmar corner in Gn2, while Gn1 is weak and slender. In the deep-water species *P. calcaratus* and *P. gregarius* the males have Gn2 propodus + dactylus very much lengthened and the eyes large, Cx3 has no parallel margins, but becomes wider distally and is not much narrower than Cx4, while *P. holmesii* has a narrow Cx3 with parallel margins, very different from Cx4.

P. clypeatus must remain a species dubia, as it is too poorly described.

The species *P. gregarius* and *schuleikini* (originally only subspecies of *P. gregarius*) show differences only in the even more elongated Gn1 in the latter, and I think *P. schuleikini* is a big female of *P. gregarius*. I have also my doubts about the description of *P. grandimana* (Bonnier), where all details match *P. gregarius* except the big and triangular Cx1 which should be even larger than Cx2, an extremely unusual character in stenothoids; it seems quite probable that this is an error and that Cx2 is repeated.

- Branch et al. (1991) illustrate a *Probolooides* sp. with U3 with 2 rami, which undoubtedly is also an error of the drawing.

Thus the only certain Atlantic-Arctic members are *P. calcaratus*, *gregarius*, *schokalskii* and *zubovi*.

There are 5 nominal *Probolooides* species from S-Africa and the Antarctic-Subantarctic region: *P. porcellanus*, *rotundus*, *stephensi*, *typicamimus*, *typicus*. The species *P. stephensi* and *P. rotundus* are morphologically similar and may be synonymized; *P. typicus* is redescribed and both could be transferred to *Metopoides*, as they have more plesiomorphic character states than members of *Probolooides*. - *P. porcellanus* is redescribed and is the type of a new monotypic genus *Malvinometopa*.

The remaining species *P. typicamimus* would then be the only member of the genus *Probolooides* living in the Antarctic, but it seems quite probable that also this species does not belong to this genus. But it is incompletely described though, based on a single specimen and knowledge about its character states is still very inadequate.

There are two nominal Pacific species of *Probolooides* remaining, *P. tundus* and *pacificus*, which may well be synonymous: the shape of Gn2 matches (the only illustrated detail of the first), and the written description of the shape of P5-7 merus in *P. tundus* "narrow, scarcely produced" matches the description by Shoemaker, 1964 for *P. pacificus* "very slightly expanded". Furthermore both species were found off California at greater depth (302 fathoms = 552 m and 718 fathoms = 1313 m, among hydroids on the back of a spider crab). - Shoemaker describes and illustrates *P. pacificus* with slender P5-7 merus, but at the end of his remarks he adds: "as shown here, the merus [of the last peraeopods] is widely expanded", which must be a lapsus linguae.

Probolooides anophthalmus is the only species living in the Indian Ocean (Madagascar). It is very similar to the Atlantic species *P. holmesi*, however there are some differences in the shape of T, the presence of pearls on the Cx3 margin and the shape of A1, 2. This deep-sea species has no eyes.

Two species can be added here:

"*Metopa nordmanni*" sensu Shoemaker, 1955: 128 fig. 10 a-j (non *Metopa nordmanni* Stephensen) has to be described as new member of *Probolooides*, but as I could not see the material it must be cited as *Probolooides* sp. (Shoemaker, 1955) for the time being.

Probolooides aequicornis (Stephensen, 1931), as explained above.

After the thorough check of 16 species, eight (plus one doubtful member) remain belonging to *Probolooides* and show that the title in this series of papers is no longer appropriate, as none of them was found in the Austral-Antarctic region:

aequicornis (Stephensen, 1931: 198 fig. 59); between Faroes and Iceland, N-Atlantic.
anophthalmus Ledoyer, 1986: 965-66 (Madagascar, 335-450 m); Indian Ocean.

calcaratus (Sars, 1882: 92, t.4 sub *Metopa* c., 1895: 247, t. 85 sub *Probolium* c.; 1992: 247 t. 85), Atlantic.

gregarius (Sars, 1882: 93; 1895: 245 pl. 84), Atlantic; = probably *grandimanus* (Bonnier, 1896: 638 sub *Probolium grandimanum*), species dubia, Atlantic; = probably *schuleikini* Gurjanova, 1946: 283 sub *Proboloides gregarius* ssp. *schuleikini*, Arctic.

? **holmesi** Bousfield, 1973: 89 fig. 16/2, Atlantic.

pacificus (Holmes, 1908: 524), Pacific O, = ? *tundus* JL Barnard, 1962: 147–149, Pacific.

schokalskii Gurjanova, 1946: 283, Arctic, Kara Sea

sp. Shoemaker, 1955: 128, Arctic, Point Barrow

zubovi Gurjanova 1951: 412–13, Arctic, Kara Sea

Species dubia.

Proboloides clypeatus (Stimpson, 1853: 51 sub *Stenothoe clypeata*), Atlantic.

Species incertae sedis.

? *Metopoides typicamimus* Andres 1995: 355–364, Antarctica. [This species may very well belong to *Metopoides*, but has very elongate antennae and lacks OP on Mxp, or at least not seen with certainty, both advanced character states. More material is needed for solving this question].

? *Proboloides holmesi* Bousfield 1973: 89, fig. 16(2). [Aberrant member of this genus. May belong in *Metopa*].

Species transferred to Metopoides.

Metopoides rotundus (Stebbing, 1917) (= ? *P. stephensi* Ruffo, 1949)

Metopoides typicus (Walker, 1906)

Key to 15 members of Metopoides species (including ?Metopoides typicamimus)

- | | | |
|---|---|--|
| 1 | P7 basis posterodistally regularly rounded..... | 2 |
| – | P7 basis distally clearly narrowing..... | 13 |
| 2 | Gn2 male palm with incisions, excavations and teeth; palmar corner about 90°..... | 3 |
| – | Gn2 male palm smooth or serrated..... | 4 |
| 3 | Gn1 carpus < propodus; P5–7 merus distoposteriorly lengthened, clearly reaching more than half length of carpus, in P7 even more than full carpus length; U3 ramus art 1 = art 2, peduncle and ramus art 1 with 1 robust seta each..... | <i>M. pollex</i> Krapp-Schickel, 2008 (3–4 mm) |
| – | Gn1 carpus > propodus; P5–7 merus posterodistal tip not reaching half length of carpus; U3 ramus art 1 > art 2, peduncle and ramus art 1 with many robust setae..... | ? <i>M. typicamimus</i> Andres, 1995 (3–3,5 mm) |

- 4 Gn1 carpus twice as long as wide; propodus widening distad, with concave palm and upturned palmar corner.....***M. clavatus* Schellenberg** (5.5–8 mm)
- Gn1 carpus not as long; propodus not as above**5**
- 5 P6 basis widened, but anterior and posterior margin parallel, not convex ... **6**
- P6 basis posterior margin convex, rounded as P7**7**
- 6 Gn1 short and wide, propodus and carpus $l < 2b$; Gn2 palm $1/3$ of total length of propodus; U3 ramus art 1 subequal length of peduncle
.....***M. sarsii* (Pfeffer)** (2.8–6.5 mm?!)
- Gn1 elongate, propodus and carpus $l > 2b$; Gn2 palm $> 1/3$ of total length of propodus; U3 ramus art 1 $<$ length of peduncle.....
.....***M. lanceolatus* Rauschert** (3–4 mm)
- 7 Cx4 inferior margin distinctly excavated, concave.....**8**
- Cx4 inferior margin convex or only slightly excavate**9**
- 8 Gn2 fem. propodus with parallel margins, palmar corner about 150° , width $<$ half length of anterior margin
.....***M. cf. heterostylis*** (3 mm), ***M. heterostylis* Schellenberg** (2.8–3.3 mm)
- Gn2 fem. propodus widest at palmar corner, which is $< 120^\circ$, width $>$ half length of anterior margin..... ***M. latus* Rauschert** (2.8–3.4 mm)
- 9 Gn 1, 2 propodus with parallel margins, shape very similar; P7 merus twice as wide as carpus, reaching half length of carpus
.....***M. curvipes* Schellenberg** (juv. fem. 2 mm)
- Gn2 propodus widening **10**
- 10 Gn2 crenulated, in the middle of the long palm a semicircular excavation
.....***M. rotundus* (Stebbing, 1917)**, ?=***M. stephensi* (Ruffo, 1949)** (3.5 mm)
- Gn2 palm serrated or smooth **11**
- 11 Gn2 palmar corner well defined by short and acute tooth as well as shallow excavation; P6,7 merus distoposterior tip not reaching half length of carpus...
.....***M. typicus* (Walker, 1906)** (3–3.5 mm)
- Gn2 palmar corner smooth..... **12**
- 12 U3 peduncle = ramus, strongly spinose; P7 basis posteriorly semicircularly rounded.....***M. bellansantinae* (Bushueva)** (3 mm)
- U3 peduncle $<$ ramus, naked; P7 basis oval.....
.....***M. magellanicus* (Stebbing)** (2.8–3 mm)
- 13 Gn2 propodus twice as long as wide; $A1 > A2$ **14**
- Gn2 propodus clearly much more than twice as long as wide; $A1 < A2$ **15**
- 14 Gn1 length of propodus = carpus length; P7 basis proximally twice as wide as distally and about twice as long as the distal width.....
.....***M. longicornis* Schellenberg** (2–3 mm)
- Gn1 length of propodus $<$ carpus length; P7 basis proximally only a little wider than distally, about three times as long as the distal width
.....***M. angustus* Rauschert** (3.2 mm)

- 15 P6 basis elliptical, distally and proximally about the same width; P7 posterior margin regularly convex, but posterodistally no lobe.....
 *M. ellipticus* Schellenberg (4.5 mm)
- P6, 7 basis trapezoid shaped, distally distinctly narrower than proximally.....
 *M. leptomanus* Rauschert (3.6–3.9 mm)

Key to 9 members of *Proboloides* (including ? *P. holmesi* and *P. sp.*)

- 1 Gn2 male palm identical to propodus length; propodus longer than 2× width..... **2**
- Gn2 male palm not identical to propodus length; propodus shorter than 2× width..... **3**
- 2 Gn2 male propodus with short serrated margin near dactylus-insertion, then rectangular corner, two humps along the remaining palmar margin; Gn2 female palm with similar serrated part near dactylus insertion, remaining palmar margin somewhat excavated.....
 *P. gregarius* (Sars, 1882) (5–6 mm, N-Atlantic, Arctic)
- Gn2 male propodus with short serrated margin near dactylus insertion, defined by blunt corner, remaining palmar margin smooth; Gn2 female propodus rounded, smooth, palm = hind margin.....
 *P. calcaratus* (Sars, 1882) (5–6 mm, N-Atlantic)
- 3 Gn2 male palmar margin not defined by acute tooth..... **4**
- Gn2 male palmar margin defined by acute tooth..... **5**
- 4 Gn2 propodus l:b about 3:2, palm about the length of remaining hind margin, corner rounded; Gn1 simple, triangular carpus < propodus.....
 ?*P. holmesi* Bousfield, 1973 (2,5 mm, Pacific)
- Gn2 propodus l:b about 2:1, palm not defined, dactylus reaching along 2/3 of palm which is unregularly serrated; Gn1 subchelate, elongate carpus with parallel margins, > propodus.....
 *P. aequicornis* (Stephensen, 1931) 5 mm, Faroes, N-Atlantic
- 5 Gn2 male, female palm longer than remaining hind margin of propodus; Gn1 propodus triangular, palmar corner about 120°.....
 *P. schokalskii* Gurjanova (5 mm, Kara Sea)
- Gn2 male, female palm not longer than remaining hind margin of propodus... **6**
- 6 Gn2 male next to dactylus insertion strongly serrate; besides the palm-defining strong and acute tooth in the middle of the palm another one, followed by a small narrow incision; in male, female P7 basis oval.....
 *P. pacificus* (Holmes, 1908) (6 mm, Pacific)
- Gn2 palm not divided by additional tooth, regularly serrated from dactylus-insertion to corner..... **7**

- 7 Gn1 carpus clearly longer than propodus, more than 4× longer than wide...
 ...*P. sp.* (see “*Probolooides nordmanni*” in Shoemaker, 1955 p. 30 fig. 10(a-j))
- Gn1 carpus subequal to propodus..... **8**
- 8 Gn1 propodus l:b = 2; P6 basis with regularly rounded margin, merus reaching end of carpus ... *P. anophthalmus* Ledoyer, 1986 (2,5 mm, Madagascar)
- Gn1 propodus l > 2b; P6 with straight, parallel margins, merus not reaching end of carpus *P. zubovi* Gurjanova, 1951 (5 mm, Kara Sea)

The habitus sketches added to the resulting tree in Fig.14 (from above: *Probolooides*, a large *Scaphodactylus*, *Torometopa* with A1 > A2, *Torometopa* with A1 < A2, small *Scaphodactylus* and *Metopoides*) may give an idea about the differences in the body shapes in this basic group of stenothoids: e.g. members of *Probolooides* have a disto-posteriorly lengthened and widened merus on the last three pereopods, which is much less the case in all other groups. Ed Bousfield (in litteris) opines that this must have an important hydrodynamic function, which could well be imagined. Also the relative length and width of Cx 4 (in *Scaphodactylus gigantecheirus* strikingly small) or the relation of the antennae (in the group near *Torometopa antarctica* and *crenatipalmata* with the second one always being longer and stronger) could tell us something about the swimming (or even digging?) ability, if we would know more about their life style. However, it seems probable that *Probolooides* members are mainly free-living and do not live in association with, or at least not inside of, other animals; they ought therefore to be good swimmers and have a rather strong sexual dimorphism.

The remaining species in Fig. 14., not belonging to the genus *Probolooides*, will be treated in the following and final part.

Acknowledgements

As already written in part 1 (Krapp-Schickel 2009), this paper developed during more than a decade, and the card-files of these species accompanied me to every Museum's visit or even during my stay in hospital. In addition to the friends already mentioned in part 1 (Hans-Georg Andres, Stefan Koenemann, Jim Lowry, Gary Poore, Sandro Ruffo and Wim Vader), I want to thank this time also Ed Bousfield, with whom I had a lively correspondence. As was nearly always the case when publishing, also here Wim Vader helped with very constructive critical remarks.

References

- Andres H-G (1995) Notes on *Probolooides typica* (Walker), KH Barnard, with a description of *Metopoides typicamimus* sp. n. (Crustacea, Amphipoda, Gammaridea). Mitteilungen aus dem hamburgischen zoologischen Museum und Institut 92: 355–364.
- Barnard KH (1932) Amphipoda. Discovery Report 5, 326 pp., 174 Figs, 1 pl.

- Barnard KH (1940) Contributions to the crustacean fauna of South Africa. XII. Further additions to the Tanaidacea, Isopoda, and Amphipoda, together with keys for the identification of the hitherto recorded marine and fresh-water species. *Annals of the South African Museum* 32/5: 381–543.
- Barnard JL (1962) Benthic marine Amphipoda of southern California: 1) Families Aoridae, Photodae, Ischyoceridae, Corophiidae Podoceridae. 2) Families Tironidae to Gammariidae. 3) Families Amphilochidae, Leucothoidae, Stenothoidae, Argissidae, Hyalidae. *Pacific Naturalist* 3/1,2,3: 1–163.
- Barnard JL, Karaman G (1991) The Families and Genera of Marine Gammaridean Amphipoda (Except Marine Gammaroids), Part 1, 2. *Records of the Australian Museum, Suppl.* 13 (1/2): 1–866.
- Bonnier J (1896) Edriophthalmes. Resultats scientifiques de la campagne du “Caudan” dans le golfe de Gascogne. *Annales de l’Université de Lyon* 26: 527–689, pls. 28–40.
- Bellan-Santini D, Ledoyer M (1974) Gammariens (Crustacés Amphipoda des Îles Kerguelen et Crozet. *Tethys* 5 (4): 635–708.
- Bousfield EL (1973) Shallow-water gammaridean amphipoda of New England. London, National Museums of Canada. Cornell Univ. Press, 312 pp, 60 pl.
- DeBroyer C, Lowry JK, Jazdzewski K, Robert H (2007) Census of Marine Life. Synopsis of the Amphipoda of the Southern Ocean. vol. 1. Catalogue of the Gammaridean and Corophiidean Amphipoda (Crustacea) of the Southern Ocean with distribution and ecological data. *Bulletin de l’institut royal des sciences naturelles de Belgique, Biologie* vol 77, suppl. 1: 1–324.
- Griffiths CL (1974) The Amphipoda of southern Africa. Part 4. The Gammaridea and Caprellidea of the Cape Province east of Cape Agulhas. *Annals of the South African Museum* 65. 251–336, 18 Figs.
- Gurjanova E (1946) New species of Isopoda and Amphipoda from the Arctic Ocean. Works of Drifting Ice Expedition in the Central Arctic Ocean in Icebreaker Steamer G. Sedov 272–297, 26 Figs. [in Russian]
- Gurjanova E (1951) Amphipoda - Gammaridae. *Izdatelstvo Akademii Nauk, Bokoplavy morej SSSR USSR*. Moskva: 1031, 705 Figs.
- Holmes SJ (1908) The Amphipoda collected by the U.S. Bureau of Fisheries Steamer “Albatross” off the west coast of North America in 1903–1904, with descriptions of a new family and several new genera and species. *Proceedings of U.S. National Mus.* 35(1654): 489–543.
- Krapp-Schickel T, Koenemann S (2006) Cladistic analysis on the family Stenothoidae (Amphipoda, Crustacea). *Contributions to Zoology* 75 (3/4):169–188.
- Krapp-Schickel T (2009) On the Austral-Antarctic stenothoids *Proboloides*, *Metopoides*, *Torrometopa* and *Scaphodactylus* (Crustacea, Amphipoda). Part 1: genus *Metopoides*: *Zoosystematics and Evolution* 85 (1): 93–115.
- Ledoyer M (1986) Crustacés amphipodes gammariens. *Faune de Madagascar* 59(2): 599–1112.
- Maddison DR, Maddison NP (2003) *MacClade* 4.06. Sinauer Ass., Sunderland, Massachusetts.

- Ruffo S (1949) Amphipodes (II). Résultats du voyages de la Belgica en 1897–99. Rapports Scientifiques, Zoologie. Anvers, Commission administrative du Patrimoine de l'Institut royal des Sciences naturelles de Belgique, 58 pp., 18 Figs.
- Sars GO (1882) Oversigt af Norges Crustaceer med forelobige Bemaerkninger over de nye eller mindre bekjendte Arter. I. Forhandlinger Videnskabs-Selskabs i Christiania 18/124 pp., 6 pls.
- Sars GO (1895) An account of the Crustacea of Norway. Sars. 1. Amphipoda 1, 2 vols. Christiania and Copenhagen. Alb. Cammermeyers Forlag. 1: VIII + 711 pp., 240 pls., 8 suppl. pls.
- Schellenberg A (1926) Die Gammariden der Deutschen Südpolarexpedition 1901–1903. Deutsche Südpolar-Expedition 18/ Zoologie 10: 235–414, 68 Figs.
- Schiecke U (1973) Ein Beitrag zur Kenntnis der Systematik, Biologie und Autökologie mariner Peracarida (Amphipoda, Isopoda, Tanaidacea) des Golfes von Neapel. Inaugural-Dissertation zur Erlangung der Doktorwürde der Mathematischen - Naturwissenschaftlichen Fakultät der Christian-Albrechts-Universität Kiel, 408 pp., 91 tav.
- Shoemaker CR (1955) Amphipoda collected at the Arctic Laboratory, office of Naval Research, Point Barrow, Alaska, by G.E. Macginitie. Smithsonian Miscellaneous Collections 128 (1): 1–78, 20 Figs.
- Shoemaker CR (1964) Seven new amphipods from the West coast of North America with notes on some unusual species. Proceedings U.S. Natural Museum Washington 115 (3489): 391–429.
- Stebbing TRR (1917) South African Crustacea (Part IX. of S. A. Crustacea, for the marine investigations in South Africa). Annals of the South Africa Museum 17 (I/2): 23–46.
- Stephensen K (1931) The Danish Ingolf-Expedition III (11), Crustacea Malacostraca VII (Amphipoda III) pp. 179–290, 28 Figs, 20 charts.
- Stimpson W (1853) Synopsis of the marine Invertebrata of Grand Manan or the region about the mouth of the Bay of Fundy, New Brunswick: Smithsonian Contributions to Knowledge 6 (i-iv): 5–66, 3 pls.
- Swofford DL (2002) PAUP version 4.0B.81. Sinauer Ass., Sunderland, Massachusetts.
- Walker AO (1906) Preliminary descriptions of new species of Amphipoda from the “Discovery” Antarctic Expedition, 1902–1094. Annals and Magazine of Natural History series 7 17: 13–18.