

PIDs service for Research Data in China

Computer Network Information Center, Chinese Academy of Sciences

Xiaolei Xia



01

Background

02

Statement

03

Challenge

04

Future vision

A variety of PIDs are being used in scientific research



PMID: 28339860 **Handle.Net**[®]



[arXiv:2111.06845](#) | **CSTR**

Bibcode: 1974AJ.....79..819H ?

Using in different data type



Using in different area



Using in different object



Using the identifier to share the scientific data.

- **Locate the resource**

Using PIDs to disambiguation, help the researcher find the right resource.

HANDLE (Global)

Example:

21.86116.6/SCIENCEDB.P00001.00001

- **View the resource**

The PIDs has the persistent URL, help the researcher view the resource.

CSTR (China)

Example:

CSTR:31253.11.SCIENCEDB.170.25

01

Background

02

Statement

03

Challenge

04

Future vision

2016

Research and
develop CSTR



科技资源标识

Science and technology resource identification

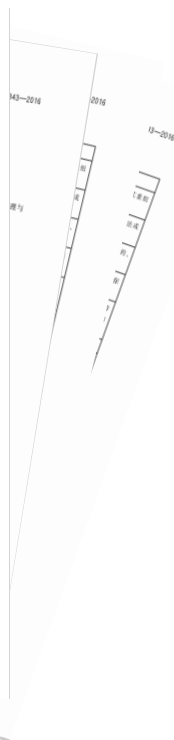
2016-08-29 发布

2017-09-01 实施

中华人民共和国质量监督检验检疫总局
中国国家标准化管理委员会 发布

2017

CSTR identifier
national standard
issued



2018

CSTR association
platform is
established



NOW

Many **universities, research institutes and repositories** are using the CSTR identifier



◆ Example:

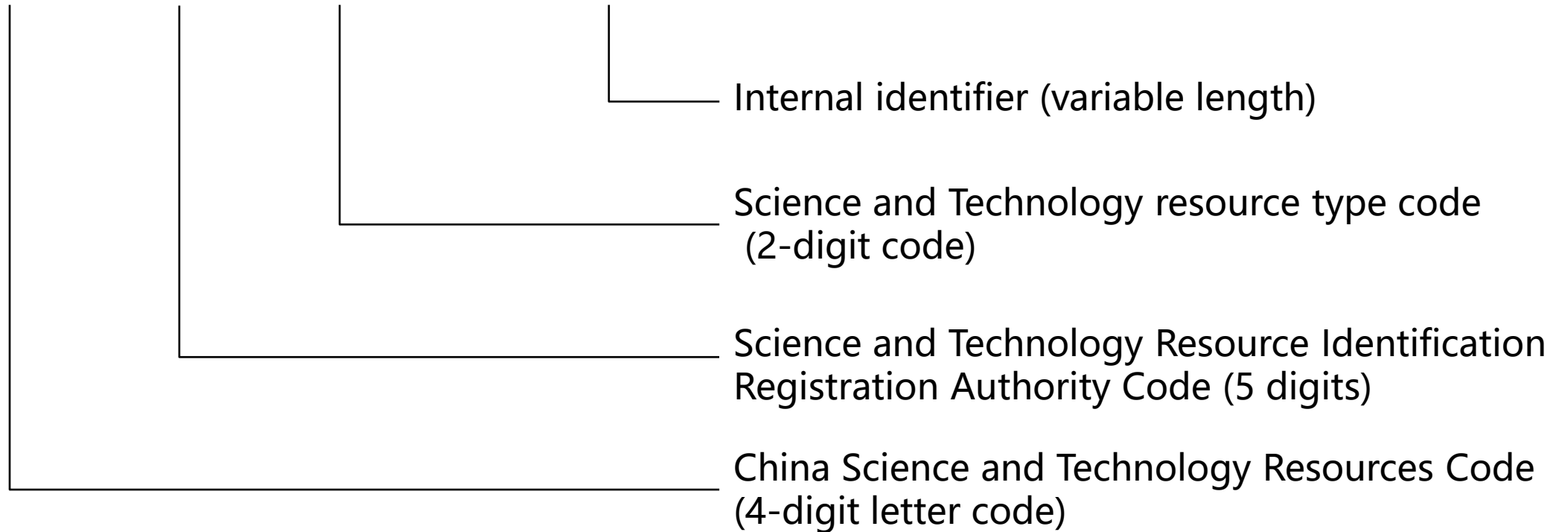
The internal code for the datasheet registered use **hierarchical** encoding as follows:

CSTR:31253.11.sciencedb.170.25

Among them:

- *"31253" is the Identification Registration Authority Code*
- *"11" is the Scientific data code*
- *"sciencedb.170.25" is the internal code.*

CSTR : XXXXX . XX . XXX ... XXX



Registration agency **45**

10 fields

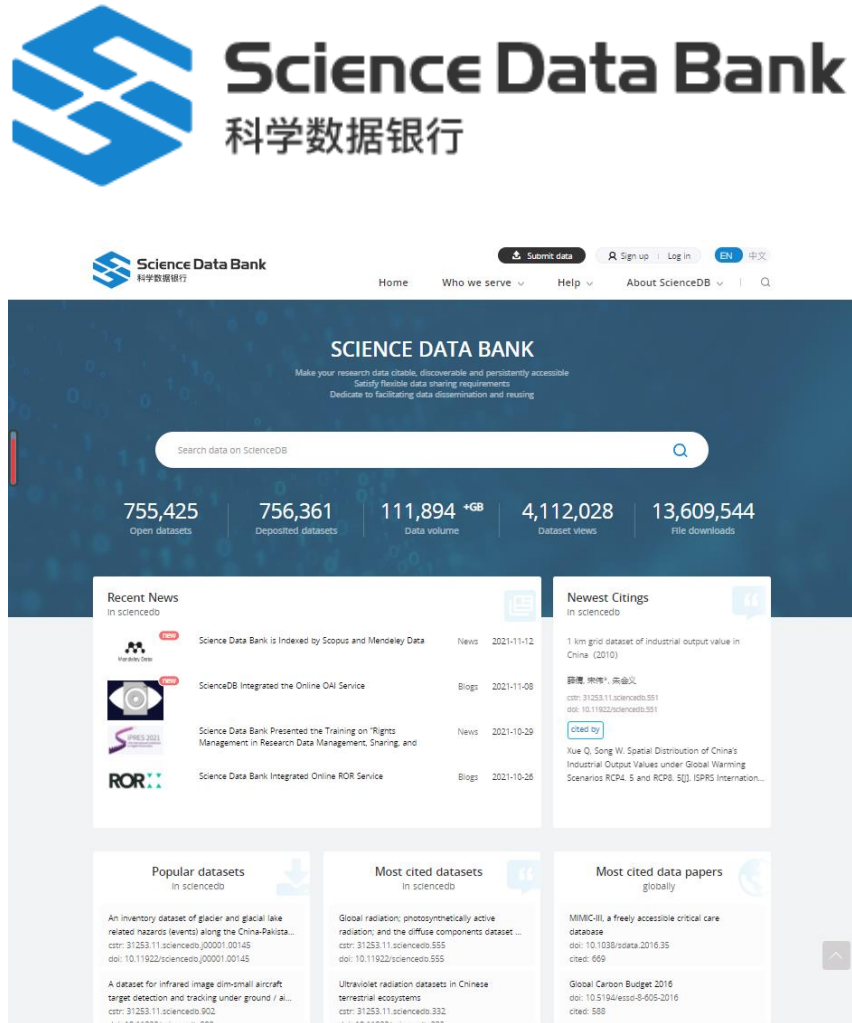
registrations: **2,363,115**

Data submission agency **91**

resolve: **135,796**



Statement—Supporting SDB



Science Data Bank
科学数据银行

Science Data Bank
科学数据银行

Home Who we serve Help About ScienceDB

SCIENCE DATA BANK
Make your research data citable, discoverable and persistently accessible
Settle flexible data sharing requirements
Dedicate to facilitating data dissemination and reusing

Search data on ScienceDB

755,425 Open datasets | 756,361 Deposited datasets | 111,894 +GB Data volume | 4,112,028 Dataset views | 13,609,544 File downloads

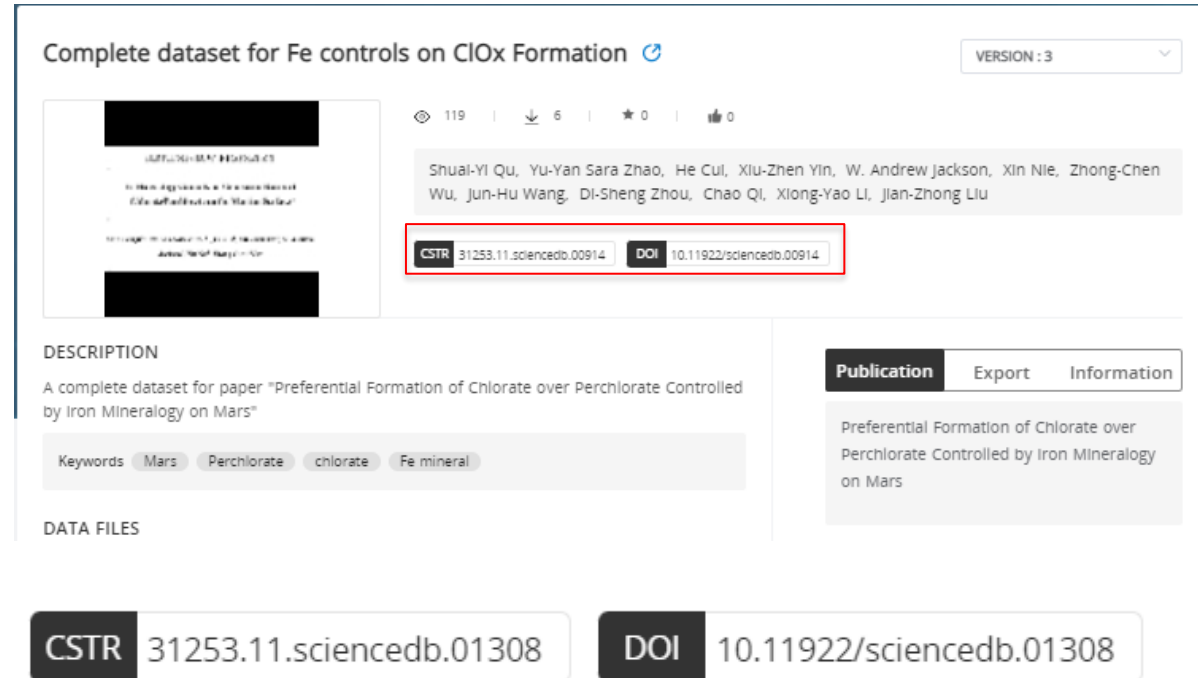
Recent News
Science Data Bank is Indexed by Scopus and Mendley Data
ScienceDB Integrated the Online OAI Service
Science Data Bank Presented the Training on 'Rights Management in Research Data Management, Sharing, and
Science Data Bank Integrated Online ROR Service

Newest Citings
1 km grid dataset of industrial output value in China (2010)
Yue Q, Song W. Spatial Distribution of China's Industrial Output Values under Global Warming Scenarios RCP4.5 and RCP8.5QJ. ISPRS International...

Popular datasets
An inventory dataset of glacier and glacial lake related hazards (events) along the China-Pakista...
Global radiation: photosynthetically active radiation, and the diffuse components dataset...
MIMIC-III, a freely accessible critical care database
Global Carbon Budget 2016

Most cited datasets
Global radiation: photosynthetically active radiation, and the diffuse components dataset...
Ultraviolet radiation datasets in Chinese terrestrial ecosystems

Most cited data papers
MIMIC-III, a freely accessible critical care database
Global Carbon Budget 2016



Complete dataset for Fe controls on ClOx Formation VERSION: 3

Shuai-Yi Qu, Yu-Yan Sara Zhao, He Cul, Xiu-Zhen Yin, W. Andrew Jackson, Xin Nie, Zhong-Chen Wu, Jun-Hu Wang, Di-Sheng Zhou, Chao Qi, Xiong-Yao Li, Jian-Zhong Liu

CSTR 31253.11.sciencedb.00914 DOI 10.11922/sciencedb.00914

DESCRIPTION
A complete dataset for paper "Preferential Formation of Chlorate over Perchlorate Controlled by Iron Mineralogy on Mars"

Keywords Mars Perchlorate chlorate Fe mineral


DATA FILES


CSTR 31253.11.sciencedb.01308 DOI 10.11922/sciencedb.01308

Publication Export Information
Preferential Formation of Chlorate over Perchlorate Controlled by Iron Mineralogy on Mars

Science Data Bank (ScienceDB) is a public, general-purpose data repository aiming to provide data services for researchers, research projects/teams, journals, institutions, universities, etc.

Complete dataset for Fe controls on ClOx Formation

VERSION : 3 

 118 | 6 | 0 | 0

Shuai-Yi Qu, Yu-Yan Sara Zhao, He Cui, Xiu-Zhen Yin, W. Andrew Jackson, Xin Nie, Zhong-Chen Wu, Jun-Hu Wang, Di-Sheng Zhou, Chao Qi, Xiong-Yao Li, Jian-Zhong Liu


CSTR 31253.11.sciencedb.00914 **DOI** 10.11922/sciencedb.00914


DESCRIPTION

A complete dataset for paper "Preferential Formation of Chlorate over Perchlorate Controlled by Iron Mineralogy on Mars"

Keywords Mars Perchlorate chlorate Fe mineral

DATA FILES

Refresh Get All URLs 

Complete dataset for Fe controls on ClOx Formation.xlsx
MD5:11b86cf1a11d6d2cb44b05c18bd69b9b (128.22 KB) 

INFO

Corresponding authors email :zhaoyuyan@mail.gyig.ac.cn

Data volume : 128.22 KB

File counts : 1

Publication Export Information

Preferential Formation of Chlorate over Perchlorate Controlled by Iron Mineralogy on Mars

RECOMMENDATIONS (DATASET)

An inventory dataset of glacier and glacial lake related hazards (events) along the China-Pakistan Economic Corridor

China-Pakistan Economic Corridor; glacier related hazards; Karakoram Mountains

A dataset for infrared image dim-small aircraft target detection and tracking under ground / air background
Infrared dim-small target; fixed wing target; target detection; target tracking; Infrared Image sequence

MODIS daily cloud-free snow cover product over the Tibetan Plateau

How to use

Though adding the CSTR identifiers, to help the researchers find corresponding resources

CITE THIS DATASET

GB/T 35294-2017 

Shuai-Yi Qu; Yu-Yan Sara Zhao; He Cui; Xiu-Zhen Yin; W. Andrew Jackson; Xin Nie; Zhong-Chen Wu; Jun-Hu Wang; Di-Sheng Zhou; Chao Qi; Xiong-Yao Li; Jian-Zhong Liu. Complete dataset for Fe controls on ClOx Formation(V3). 2021. Science Data Bank.

2021-07-23 **cstr:31253.11.sciencedb.00914;**

<https://datapid.cn/31253.11.sciencedb.00914>

Shuai-Yi Qu; Yu-Yan Sara Zhao; He Cui; Xiu-Zhen Yin; W. Andrew Jackson; Xin Nie; Zhong-Chen Wu; Jun-Hu Wang; Di-Sheng Zhou; Chao Qi; Xiong-Yao Li; Jian-Zhong Liu. Complete dataset for Fe controls on ClOx Formation. (V3). 2021. Science Data Bank.

2021-07-23. doi:10.11922/sciencedb.00914;

<http://www.doi.org/10.11922/sciencedb.00914>

<https://datapid.cn/31253.11.sciencedb.00914>

Statement—Supporting industry

In the manufacturing industry, CSTR identifiers can be added to products to help workers on the assembly line quickly understand the next step of work and improve production efficiency.



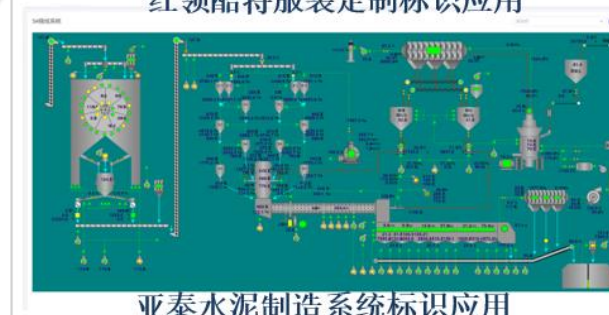
Manufacturing industry area



Clothing



红领酷特服装定制标识应用



亚泰水泥制造系统标识应用

Cement manufacturing

Mine



东杰黄金矿山标识应用



曙光电力数据标识平台

Electric power

Statement—Supporting research

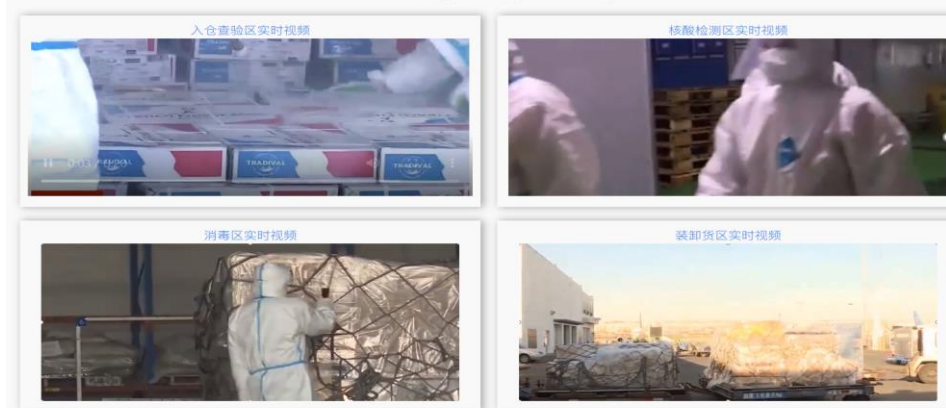
CSTR identifiers not only support scientific data, but also have many achievements in applications. CSTR identifiers support the COVID-19 research and management area.



浙江省-杭州市-钱塘区集中监管仓



钱塘新区一仓(ZJC 85469)



01 Background

02 Statement

03 **Challenge**

04 Future vision



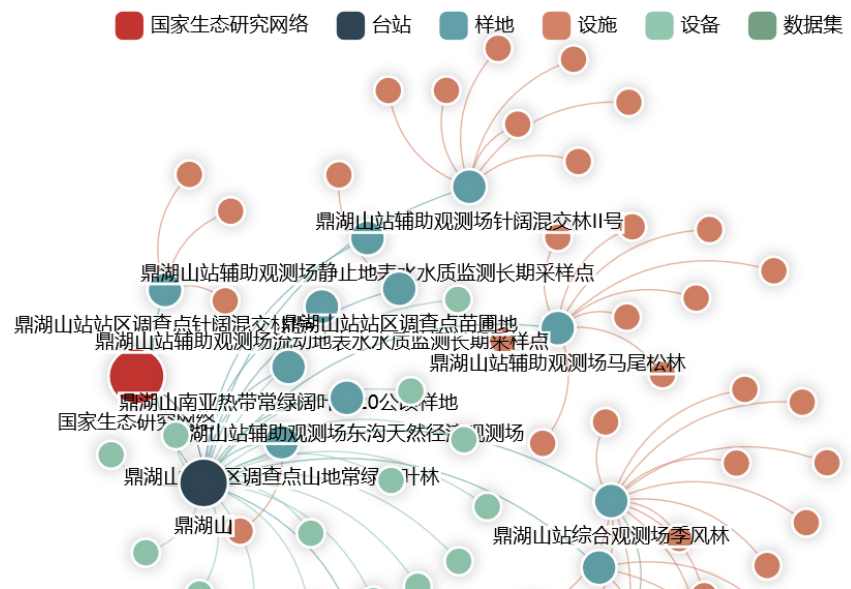
Lack of international PIDs data sharing



Correlation between papers and data needs to be strengthened

Lack of international PIDs data sharing

Using the CSTR identifier, we had create the Identifier graph between the **datasheet, equipment, sample, place and person**. In the **international PIDs field**, correlation has not been realized yet.



Correlation between papers and data needs to be strengthened



The researchers behind the publications need to be seen

01

Background

02

Statement

03

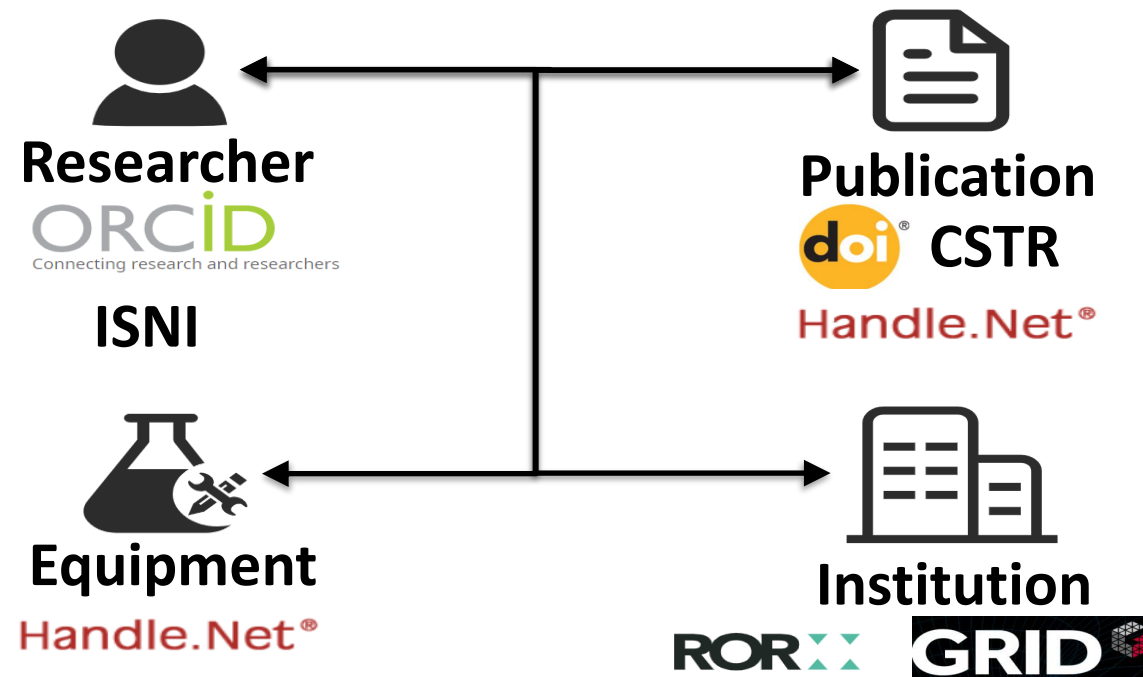
Challenge

04

Future vision

At present, the identification system used in science and technology resource field is in the situation of multi-identification coexistence for a long time.

Looking forward to international cooperation with other **PIDs** to create a **PIDs network** together.



THANK YOU