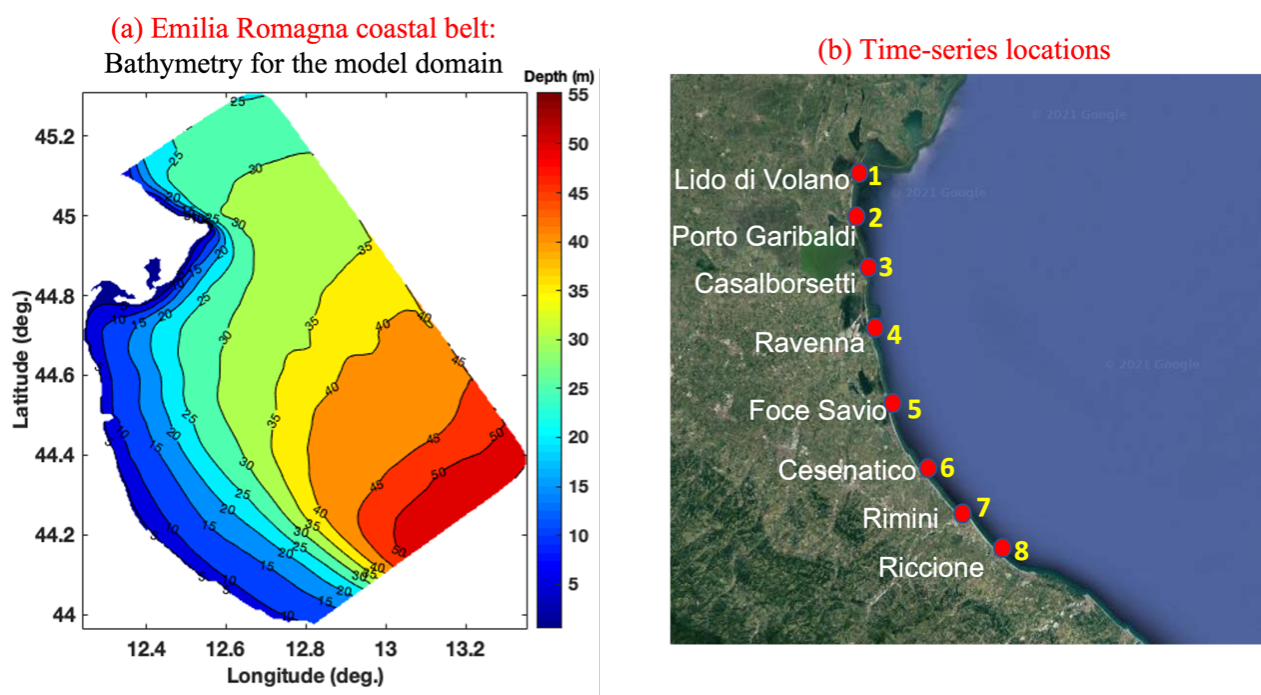


## Time Series Location Details

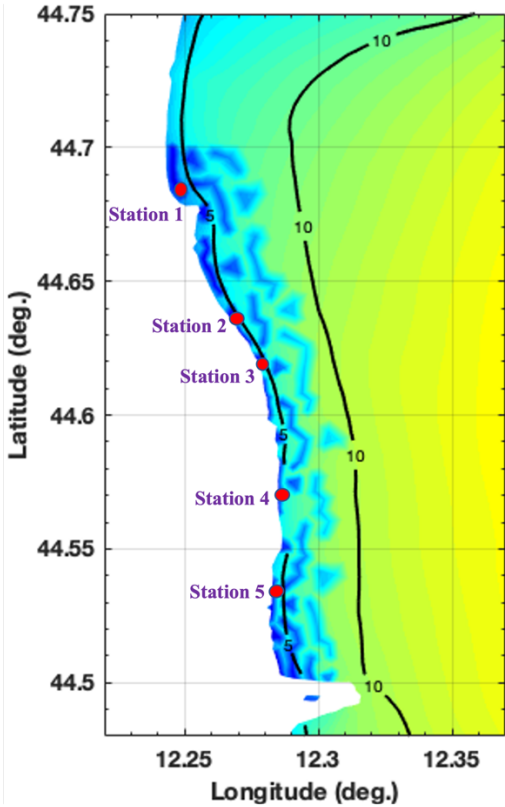
**Figure 1:** (a) Bathymetry of the WW3 model domain, and (b) selected locations for the time series in the Emilia-Romagna coastal belt during the period 2010-19 (present climate), and 2040-49 (future climate).



**Table 1:** Details of the point locations (Figure 1b) in the Emilia-Romagna coastal belt for the time-series data during the period 2010-19, and 2040-49.

Location No:	Station Name	LON (°E)	LAT (°N)	Depth (m)
1.	Lido di Volano	12.26	44.76	4.3
2.	Porto Garibaldi	12.26	44.66	5.1
3.	Casalborsetti	12.29	44.55	5.0
4.	Ravenna	12.29	44.47	2.3
5.	Foce Savio	12.35	44.33	5.3
6.	Cesenatico	12.47	44.21	10.4
7.	Rimini	12.59	44.08	8.1
8.	Riccione	12.64	44.03	6.2

**Figure 2:** Selected locations in the Emilia-Romagna coastal belt for the time series comparison (with and without vegetation) during the period 2010-19, and 2040-49.



**Table 2:** Details of the point locations (Figure 2) in the Emilia-Romagna coastal belt for the time-series comparison (with and without vegetation) during the period 2010-19, and 2040-49.

Location No:	LON (°E)	LAT (°N)	Depth (m)
1.	12.24	44.68	3.1
2.	12.26	44.63	3.8
3.	12.27	44.62	4.9
4.	12.28	44.57	4.2
5.	12.28	44.53	3.7