



atlas

UNDERSTANDING DEEP ATLANTIC ECOSYSTEMS



WP6 Case Study: Rockall Bank

Atlas 2nd General Assembly, Mallorca, April 2017

Francis Neat and David Stirling, Marine Scotland Science





Rockall Bank – Step 1a : Location and area of extent





Step 1 b Goals: main Blue Growth activities

- Fishing
- 29 M Euro per year
- Oil and Gas
- Exploration phase only



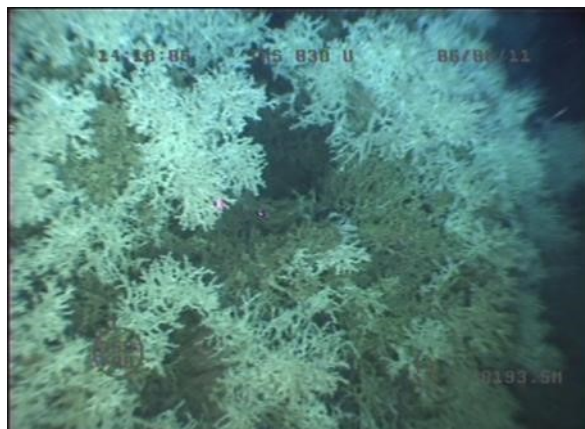
Conservation of VMEs





Step 2: identify main ecosystem components

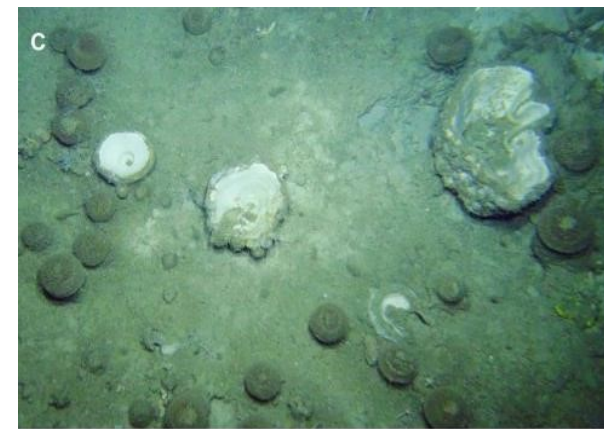
Coral reefs



Cold seeps



Sponges

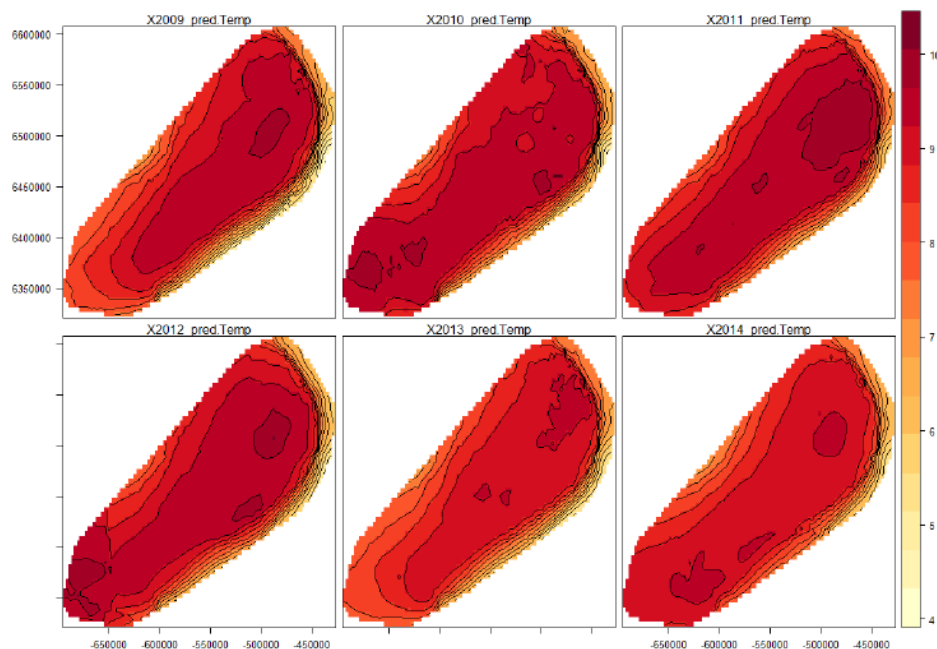


Data from ICES and Ospar, Atlas surveys



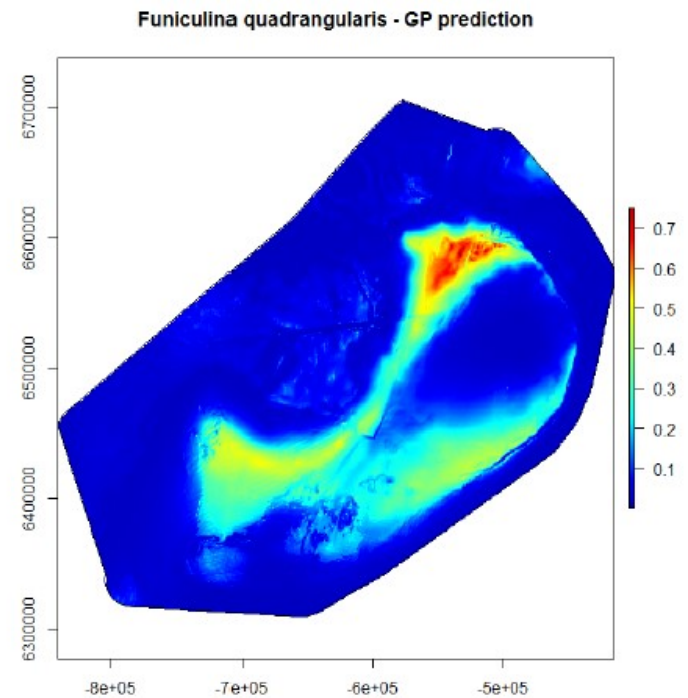
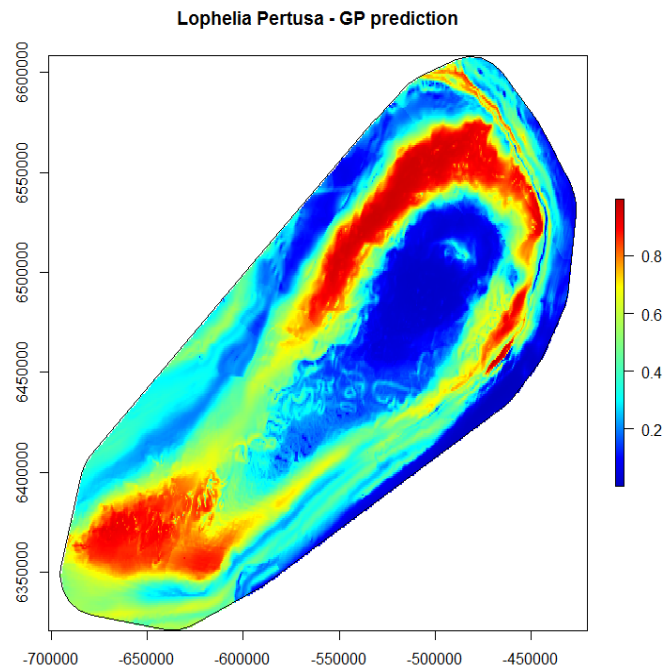
Step 2: Collate Physical and Environmental Data

Bathymetry
CTD
Sediments
Currents
Remote sensing





Species Distribution models

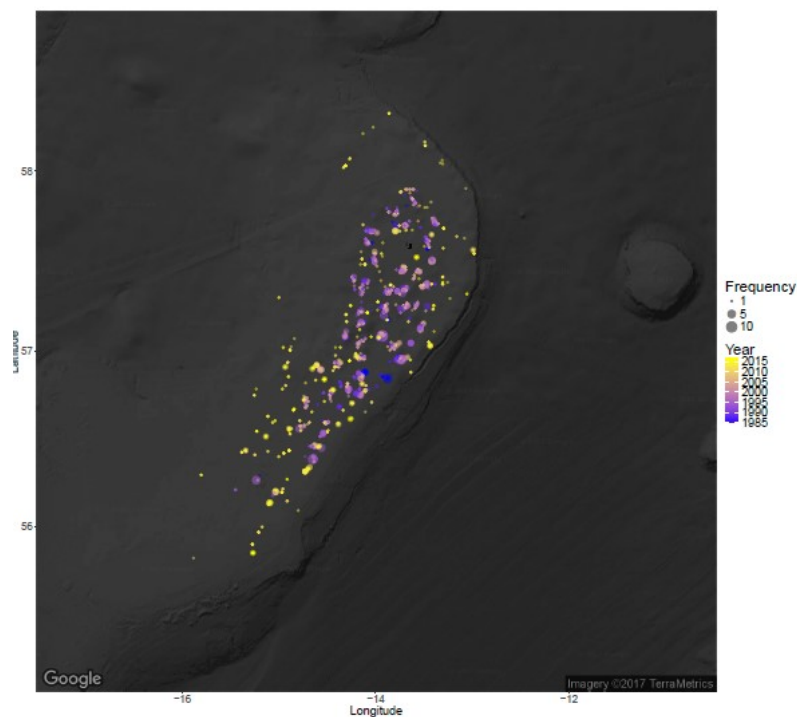




Step 2: Fish Community



Species = Angler (Monk fish)

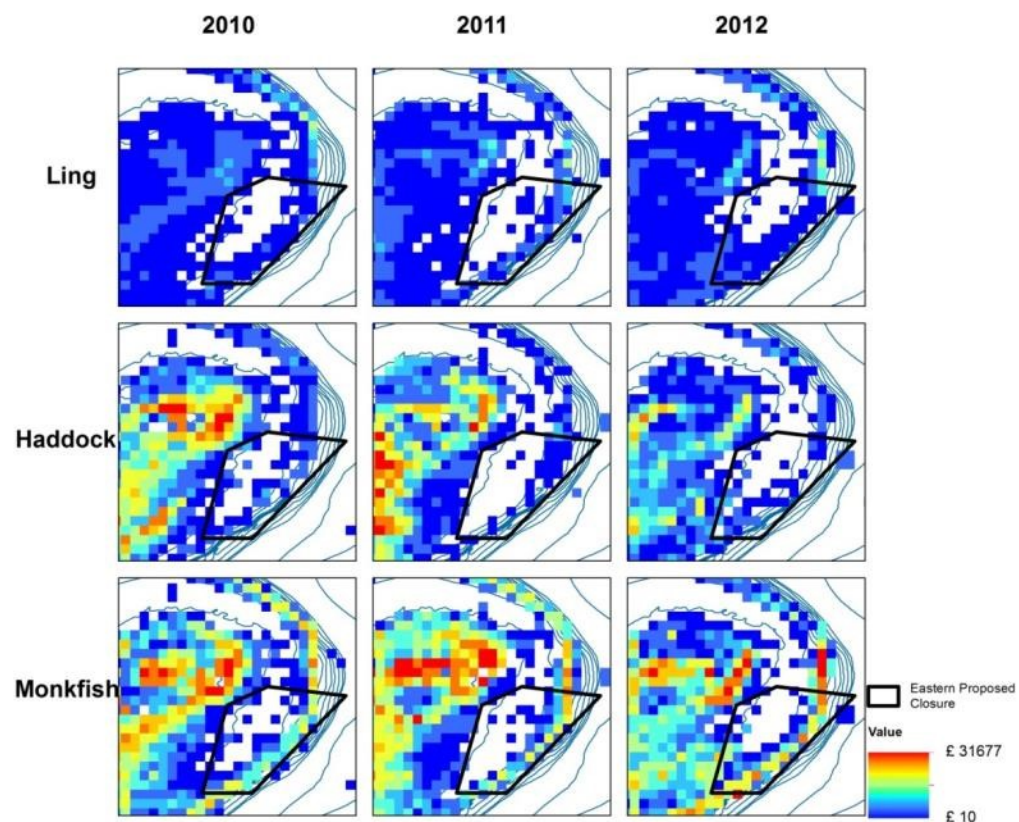


MSS data from 1986 to
present



Step 2b: pressures and impacts - Fishing

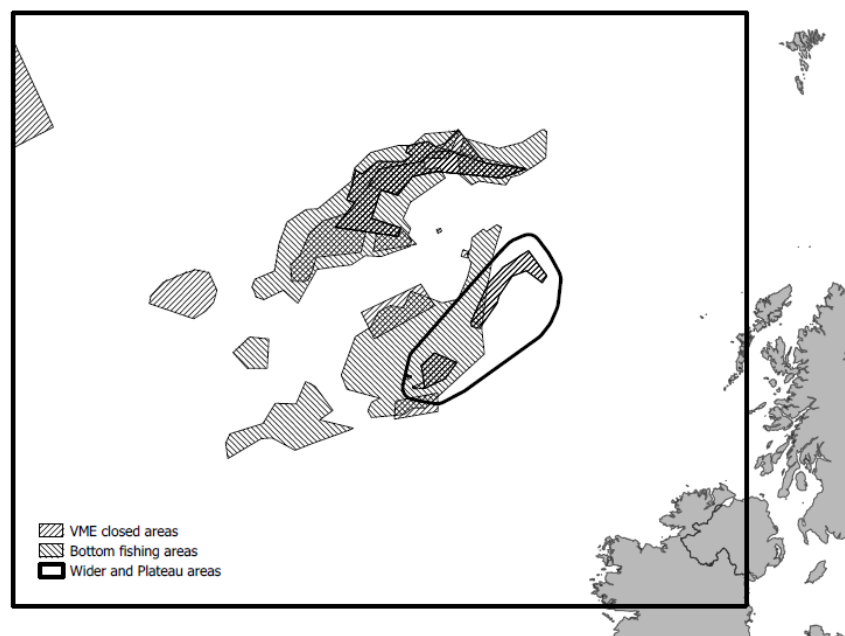
- VMS
- E-logs books
- Assess the economic value
- Spatially evaluate
- EC/NEAFC





Step 2c: Management measures

- Fisheries management by TAC
- Areas closed to bottom fishing
- EC/NEAFC





Next step: Develop a set of indicators for use in the DEVOTES application NEAT.

Areal hierarchy

- NE Atlantic
- Rockall Bank
- Plateau
- Slopes
- Basins

Fish

- CPUE
- Large Fish Indicator
- Bycatch of vulnerable species
- Species richness

Habitats

- Species richness of benthic inverts
- Areal extents of coral

Thank You!



Presenter details:

Francis Neat

f.neat@marlab.ac.uk

d.a.stirling@marlab.ac.uk

Project Contact Details:

Coordination: Professor Murray Roberts

murray.roberts@ed.ac.uk

Project Management: Dr. Katherine Simpson

katherine.simpson@ed.ac.uk

Communication & Press: Dr. Claudia Junge

claudia@aquatt.ie

Follow us:  [@eu_atlas](https://twitter.com/eu_atlas)

 [@EuATLAS](https://www.facebook.com/EuATLAS)

www.eu-atlas.org

