

# A Description of the Anime Characters Database Dataset and Ontology Used in the Japanese Visual Media Graph Project

Senan Kiryakos<sup>1</sup> and Magnus Pfeffer<sup>2</sup>

<sup>1,2</sup> Stuttgart Media University, Stuttgart, Nobelstraße 10, 70569 Stuttgart, Germany

<sup>1</sup>kiryakos@hdm-stuttgart.de

<sup>2</sup>pfeffer@hdm-stuttgart.de

## 1. Intro

This document serves to describe the ontology created by the Japanese Visual Media Graph (JVMG) project for the Anime Characters Database dataset. Following this introduction, the contents of this document are as follows: The Anime Characters Database website will be briefly introduced, followed by a table of the dataset, which includes its primary entities, relationships, and descriptive properties. In a future version, the document will also describe the RDF ontology created based on the source data for use with the JVMG knowledge graph.

In addition to this document, the Zenodo archive includes the full RDF ontology created by the JVMG project in the Turtle serialization, as well as an html document which catalogues the ontology.

## 2. Introduction to the Anime Characters Database

The Anime Characters Database<sup>1</sup> (ACDB) is an online database primarily focused on describing characters from a variety of Japanese Visual Media genres, such as anime, manga, and video games. The site refers to itself as a *visual search engine for all animated characters*. This ‘visual search engine’ designation is reflected in the entity structure and description style of characters; rather than hundreds of descriptive tag options, characters are primarily described using a small number of physical characteristics, enabling users to search based on traits such as eye color, hair color and length, and age.

## 3. Entities, Relationships, and Properties in the Anime Characters Database Dataset

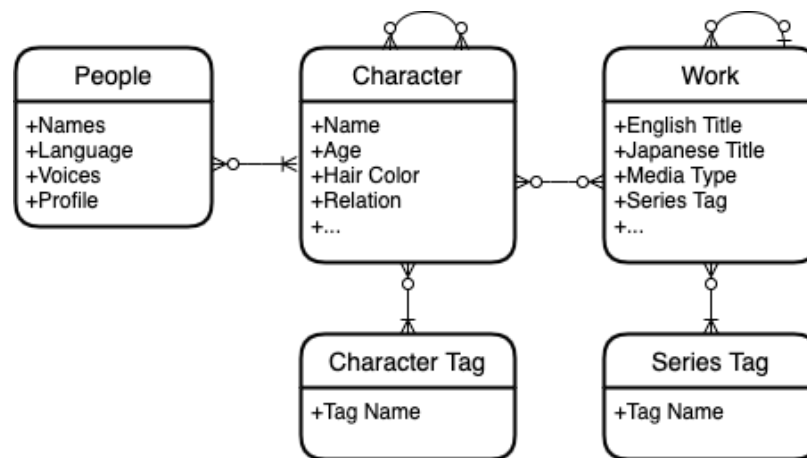
This section serves to list the exact entities, relationships, and properties featured in the ACDB dataset; these are listed in Table 1.

**Table 1.** ACDB

Entity	Property	Value Description	Relationship
Work	English Title	Title in English	
	Japanese Title	Title in Japanese	
	Romaji Title	Japanese title in the Roman alphabet	
	Furigana Title	Title in Furigana	
	Media Type	Media type of the Work (e.g. Manga, Animation)	
	Parent	If part of a series, the related parent Work	Work
	Studio	Primary corporate body responsible for the Work	
	Romaji Studio	Japanese studio name in the Roman alphabet	

<sup>1</sup> <https://www.animecharactersdatabase.com/>

	Work Tag	Descriptive tag	Work Tag
	Content Rating	Content rating for the Work, from Everyone to Mature	
Character	Name	Character name in the Roman alphabet	
	Age	Character age	
	Animal Ears	Indicates the character features animal ears	
	Appearance	Additional Works the Character appears in	Work
	Character Tag	Descriptive tag	Character Tag
	Extra Details	Additional character details	
	Relation	Related characters	Character
	Relation Type	Type of relationship between other characters	
	Work	Primary Work the Character appears in	Work
	Role	Role in the primary Work	
	Clone	Other instances of a Character	Character
	Eye Color	Character eye color	
	Hair Color	Character hair color	
	Hair Length	Character hair length	
Sex	Character sex		
Work Tag	Tag Name	Name of the Work Tag	
Character Tag	Tag Name	Name of the Character Tag	
People	Names	Name and aliases of an individual	
	Language	Primary language spoken	
	Voices	Characters which the individual voices	Character
	Profile	A short description of the individual	



**Fig 1.** Entities, relationships, and a sample set of properties for the Anime Characters Database dataset.

**Character.** These entities describe individual characters, primarily according to physical rather than personality traits. Most traits are unique properties, such as age and hair color, while others, such as generic personality traits or clothing, are listed as *Character Tags*. Relationships for this entity are to those *Character Tags*, Works that a *Character* appears in, *People* if the *Character* has been voiced, and other related *Characters*.

**Work.** *Work* entities are for creative works that *Characters* appear in. Works feature English and Japanese title names in various transliterations, responsible corporate studios, and the media type, such as franchise, manga, or live action production. Relationships for *Works* include those to descriptive *Work Tags*, and to any *Character* entities that appear in the *Work*. There is also a connection to other *Work* entities reserved for child members of a parent series or franchise.

**People.** The *People* entity represents individuals who have voiced a *Character*. Descriptions are limited to names and aliases, language spoken, and a short profile or homepage / social media link. The single relationship type links the entity to any *Characters* they have voiced.

**Character Tag.** *Character Tag* entities lack any further description beyond their names, and serve solely to act as descriptive properties for *Character* entities.

**Work Tag.** Like the *Character Tag* entity, *Work Tags* are not given any additional properties beyond their name, and are used to describe *Works*.