

Citizen Science Knowledge Centre at SDU – from a network to a local hub

18th November 2021

Anne Kathrine Overgaard

University of Southern Denmark

Anne Kathrine Overgaard

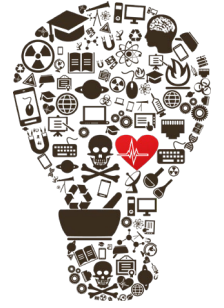
- **Head of External Projects, the Faculty of Health Science, SDU**
- **Co-founder of the SDU Citizen Science Competence Centre**
- **Project Manager of several Citizen Science projects**
- **Member of the LIBER Citizen Science Working Group**



Thomas Kaarsted

- **Deputy Library Director, SDU**
- **Co-founder of the SDU Citizen Science Competence Centre**
- **Project Manager of several CS-projects**
- **Project Manager of The Danish Research Libraries CS-project**
- **Vice-Chair of the LIBER Citizen Science Working Group**
- **Library Fellow at University College London 2020**





The start in 2016

The first workshop

30 delegates:

- Professors from all faculties and the University Hospital
- Media
- Museums
- Citizens

Aim: Can we describe a Citizen Science project?

Idea: Make citizens prioritize which research project that should be funded with 1 mio. dkr. (135.000 euro)

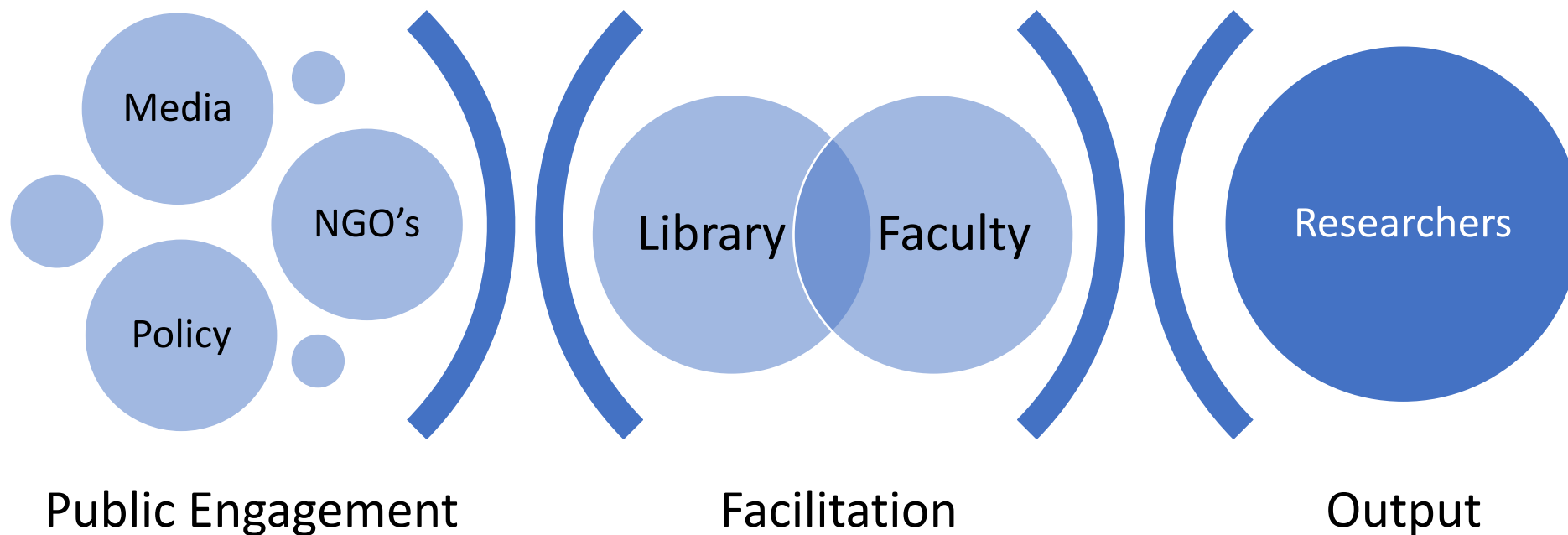
A HEALTHIER SOUTHERN DENMARK

| | 2017 | 2018 | 2019 |
|--------------------------|---------|---------|---------|
| Total Reach | 272.725 | 192.889 | 487.452 |
| Facebook (videos viewed) | 134.279 | 130.552 | 159.939 |
| Web (articles viewed) | 44.003 | 51.518 | 74.682 |
| Votes | 11.895 | 6.985 | 17.990 |





A NETWORK OF PARTNERS



The Power of Many: The Citizen Science Network started as a partnership between the faculties at SDU, Odense University Hospital and University Library of Southern Denmark.

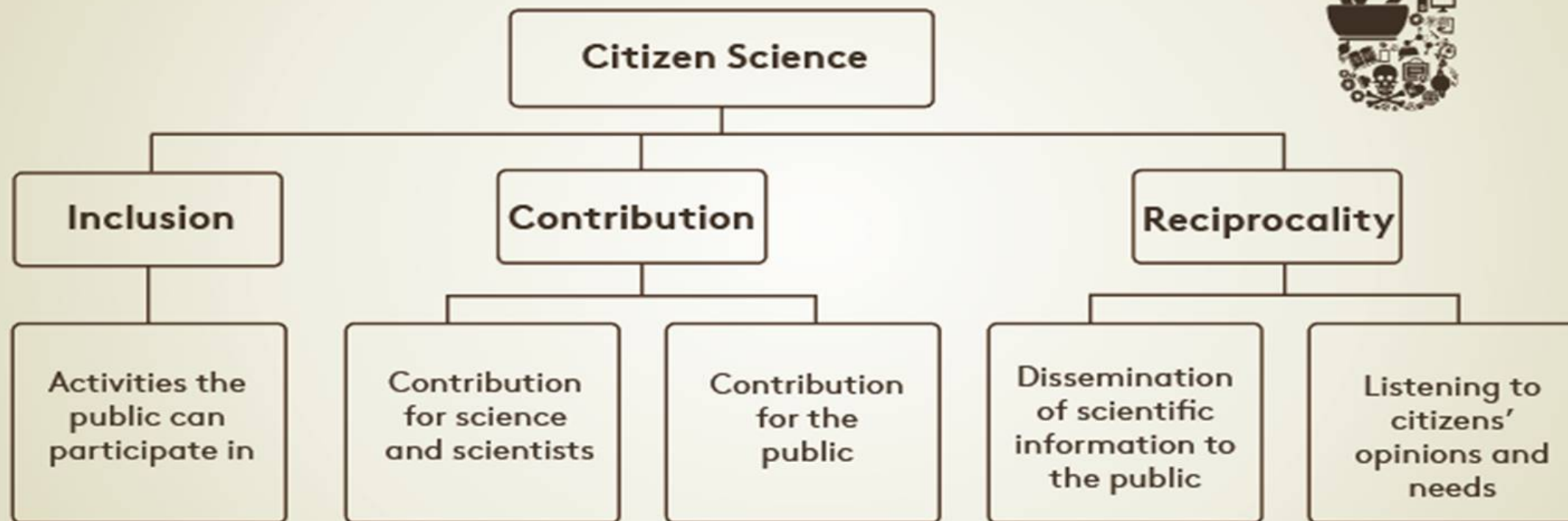
WHAT IS CS at SDU?

CITIZEN SCIENCE AT SDU

Citizen Science is often used for data collection and mapping of nature areas, but at SDU we see Citizen Science as more than that.

Citizen Science is about generating interaction and dialogue between citizens and researchers, thereby reducing the distance between them in order to encourage a debate based on knowledge and facts.

Hvad er Citizen Science?



KOMMUNIKATION – PARTNERSKABER – TVÆRVIDENSKABELIGE FORSKNINGSPROJEKTER

(Kilde: Golumbic et al. 2017)

Participation in citizen science

Level 4 'Extreme'

- Collaborative science – problem definition, data collection and analysis

Level 3 'Participatory science'

- Participation in problem definition and data collection

Level 2 'Distributed intelligence'

- Citizens as basic interpreters

Level 1 'Crowdsourcing'

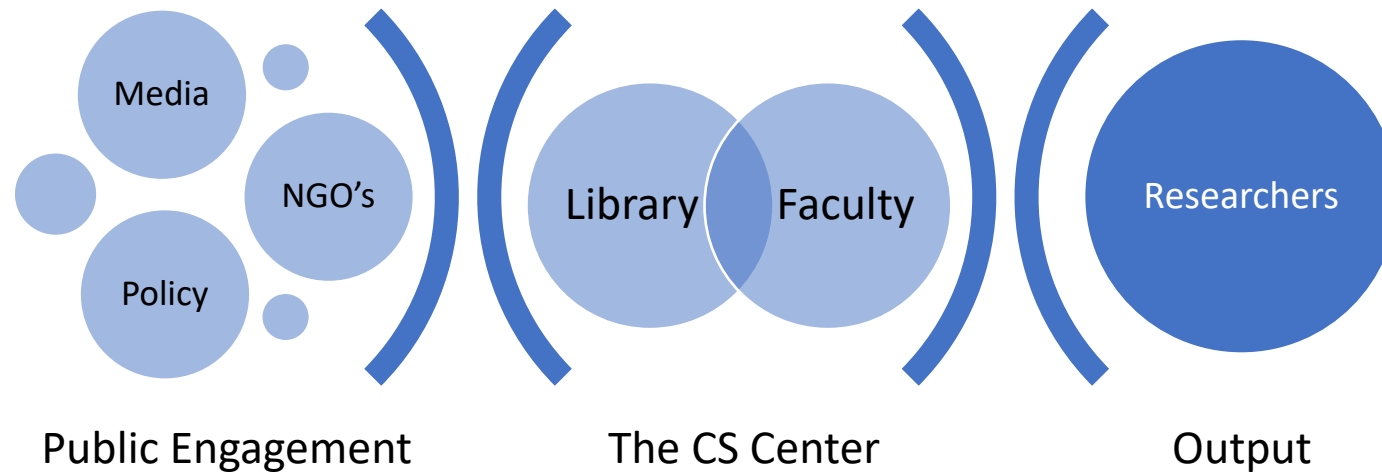
- Citizens as sensors



Drawing: Frits Ahlefeldt during the first Citizen Science-symposium på SDU

SDU: CITIZEN SCIENCE KNOWLEDGE CENTRE 1.1.2021

THE CENTRE: STILL A PARTNERSHIP





THE MISSION

For society:

To bring citizens closer to science – and scientists closer to society

To broker knowledge sharing about Citizen Science

To open the research process for citizens across all levels of education and social groups through communication, education and learning

For researchers:

To enable researchers to conduct excellent research with regards to Citizen Science

To provide relevant services for researchers – and enable them to act themselves

To support the UN SDG's

SDU committed in 2019 on the UN SDG's

The CS Knowledge Center supports and consolidates the SDU strategy of “creating value for and together with society by working with the UN’s SDGs” and is working to attract and maintain present and future generations of talents, learners and citizen scientists.

CS-SDG projects :

SDU Moves (SDG 3)

Active Living Area (SDG 3, 11)

Find a lake (SDG 15)

Going with the heart (SDG 3) – 2022

SUSTAINABLE DEVELOPMENT GOALS





THE TASK IS:

The task of the Center is to create impact by (1) initiating projects aimed at dissolving traditional divisions between research professionals, Faculties and the other links in the chain of education and (2) initiating projects in collaboration with the public including new and established media. An important aspect is (3) supporting researchers in managing research projects in order to conduct ethical sound community-based research, collect data, and do excellent research as well as (4) promoting Open Science.

Thus, the Center aims to support relevant research for and with citizens of high quality and in that way not only differentiate SDU and OUH as institutions but also aims to strengthen the status and legitimacy of research in society including public debate in the media, civil society and amongst decisionmakers.

SO, WHAT EXACTLY DO WE DO AT SDU?

ADVOCACY

PROJECT DEVELOPMENT

COMMUNICATION

FAIR DATA / RDM

COMMUNITY BUILDING

EVENTS AND WORKSHOPS

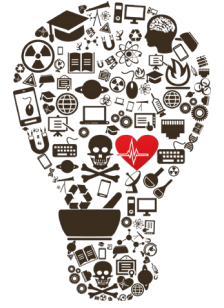
PROJECT MANAGEMENT

MEDIA PARTNERSHIPS

EVALUATION / SCIENCE LITERACY

TALENT PROGRAMME 20+10 ECTS

WHY IN THE LIBRARY?



- The faculties see the library as a neutral ground
- The library has a central function in Open Science
- The library is a well-known bridge between public and research, between citizen and researchers
- The library has resources with professional competence and skills useful for Citizen Science such as dissemination, public communication and engagement, setting up workshops and facilitating dialogue, partnerships with external non-academic partners, engaging public schools and high schools, ..
- The library has a strong network – also with public libraries

CS is good fun!!



22 PROJECTS SINCE 2017

+1.000.000 CITIZENS IN 'REACH'

THANK YOU!

Anne Kathrine Overgaard, ako@sdu.dk