



The Turing Way Community: your guide to reproducible research

18 November 2021

Esther Plomp





Esther Plomp

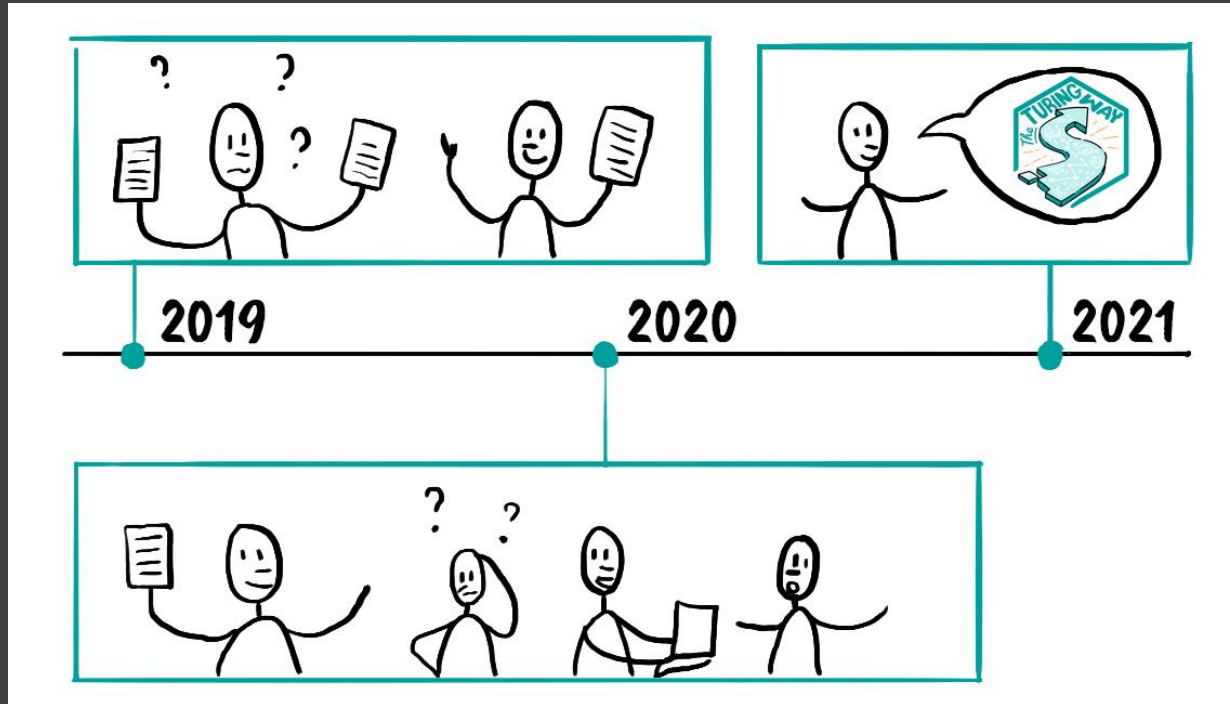
She/her

e.plomp@tudelft.nl / [website](#) / [Twitter](#)



- [Data Steward](#) @TU Delft, Faculty of Applied Sciences
- Open Science enthusiast
- Core contributor @ Turing Way

Esther - ReproHack Nov 2019 / May 2020



The Turing Way



An Open Source project, handbook, community & collaboration

We involve and supports a **diverse community** to make **data science** reproducible, ethical, collaborative and **inclusive for everyone.**

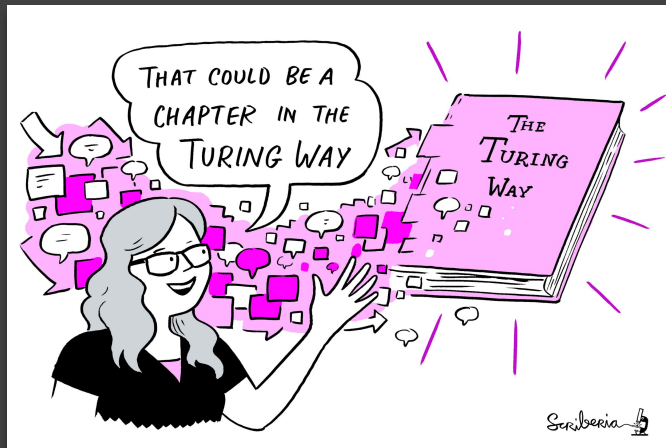
A note on the name

- We are creating guidance together, **the way** is a journey not a set of rules
- It's not a Turing only project

<https://www.turing.ac.uk/research/impact-stories/changing-culture-data-science>



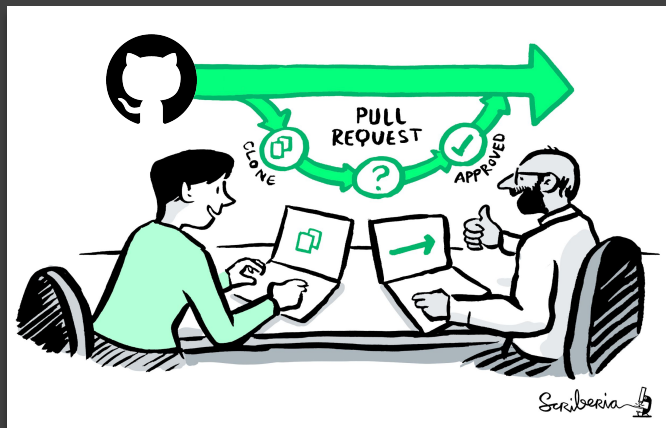
A Book



A Community



An Open Source Project

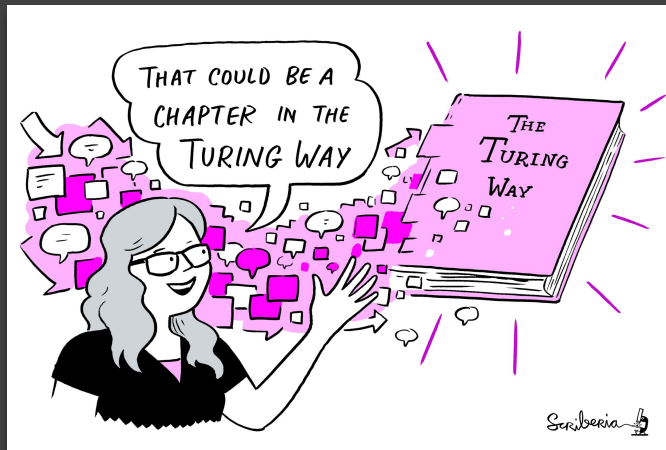


A Culture of Collaboration



@turingway, CC-BY 4.0,
[The Turing Way](#)

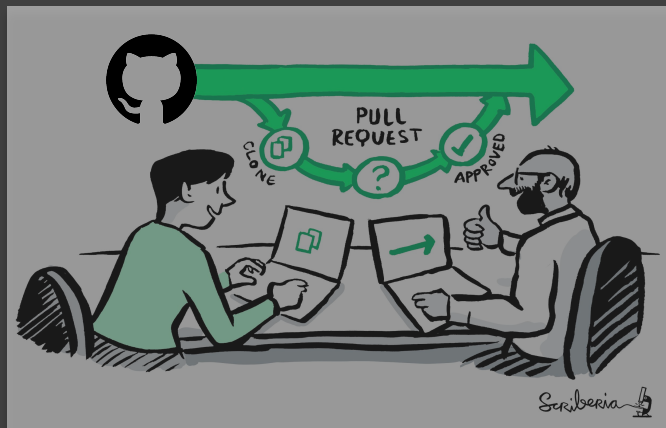
A Book



A Community



An Open Source Project



A Culture of Collaboration



@turingway, CC-BY 4.0,
[The Turing Way](#)



The Turing Way

🔍 Search this book...

Welcome

Guide for Reproducible Research

Guide for Project Design

Guide for Communication

Guide for Collaboration

Guide for Ethical Research

Community Handbook

Afterword

The Turing Way is an open source community-driven guide to reproducible, ethical, inclusive and collaborative data science.

Our goal is to provide all the information that data scientists in academia, industry, government and the third sector need at the start of their projects to ensure that they are easy to reproduce and reuse at the end.

The book started as a guide for reproducibility, covering version control, testing, and continuous integration. However, technical skills are just one aspect of making data science research "open for all".

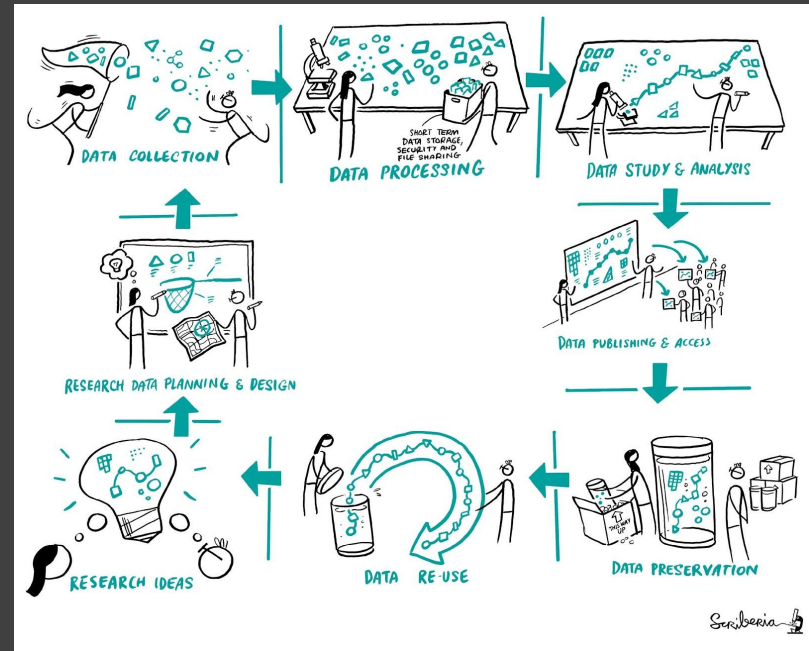
In February 2020, *The Turing Way* expanded to a series of books covering reproducible research, project design, communication, collaboration, and ethical research.



Started as a book on reproducibility

Same analysis steps on the same dataset produces same answer

This process is overwhelming.

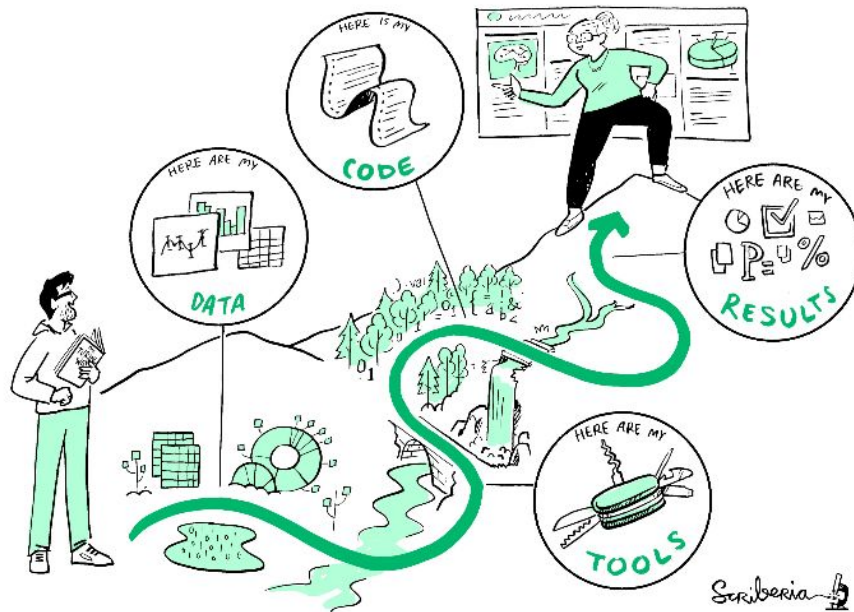


Guide for Reproducible Research

This guide covers topics related to skills, tools and best practices for research reproducibility.

The Turing Way defines reproducibility in data research as data and code being available to fully rerun the analysis.

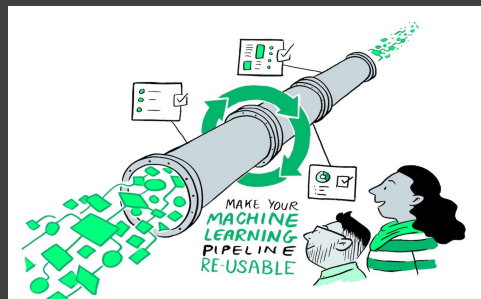
There are several definitions of reproducibility in use, and we discuss these in more detail in the [Definitions](#) section of this chapter. While it is absolutely fine for us each to use different words, it will be useful for you to know how *The Turing Way* defines *reproducibility* to avoid misunderstandings when reading the rest of the handbook.



<https://the-turing-way.netlify.app/reproducible-research/reproducible-research.html>

- Overview ✓
- Open Research ✓
- Version Control ✓
- Licensing ✓
- Research Data Management ✓
- Reproducible Environments ✓
- BinderHub ✓
- Code quality ✓
- Code Testing ✓
- Code Reviewing Process ✓
- Continuous Integration (CI) ✓
- Reproducible Research with Make ✓
- Research Compendia ✓
- Risk Assessment ✓
- Case Studies ✓

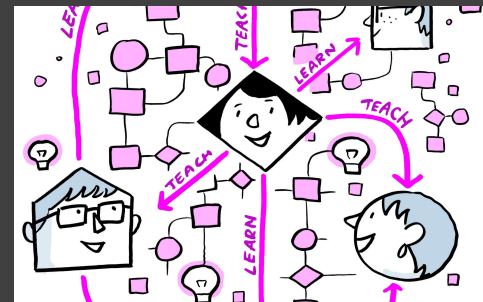
The Turing Way Guides



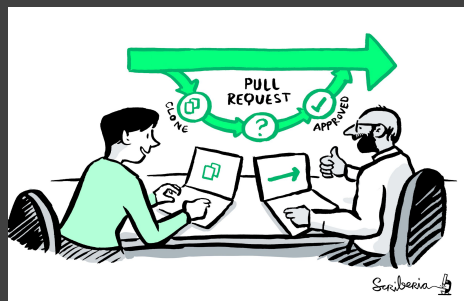
Reproducibility



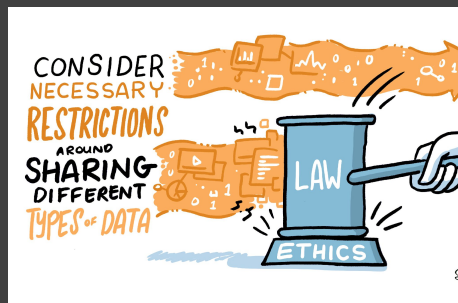
Project Design



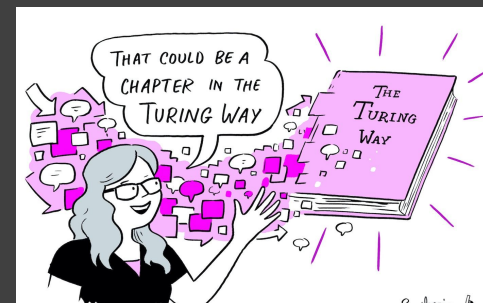
Communication



Collaboration



Ethical Research

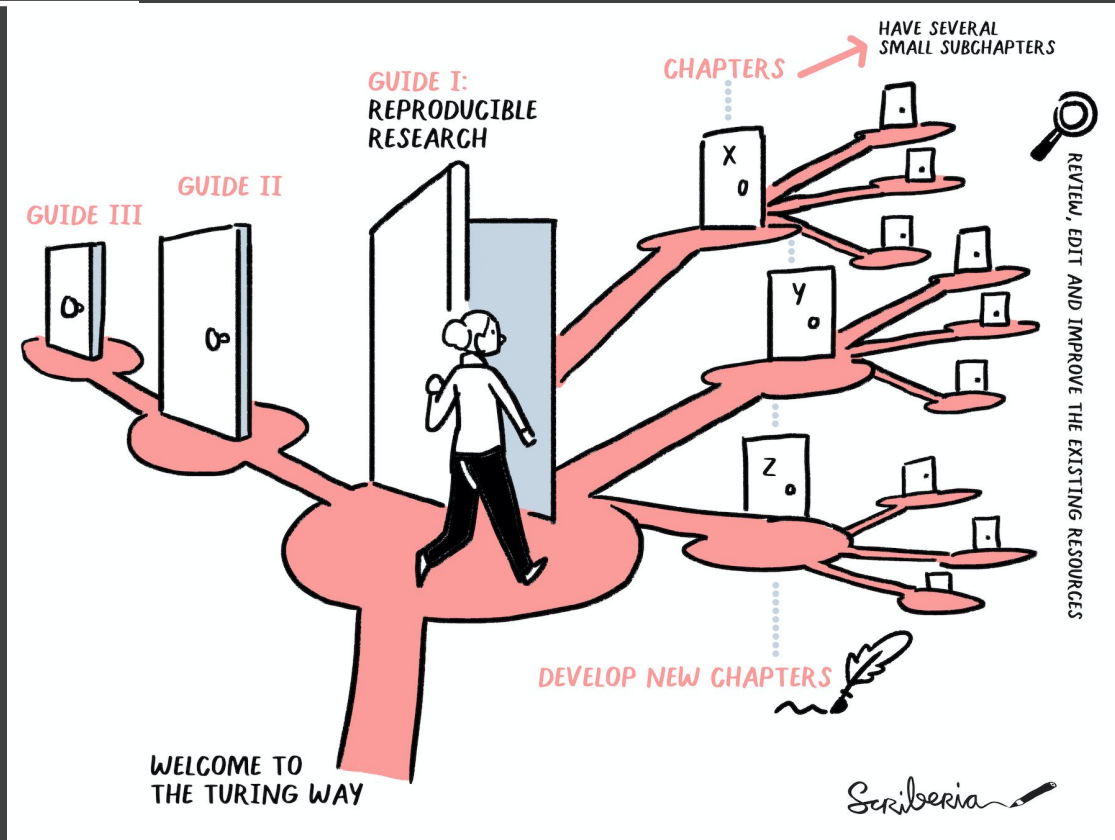


Community Handbook

Book's Structure

Chapters with short modular subchapters (200!).

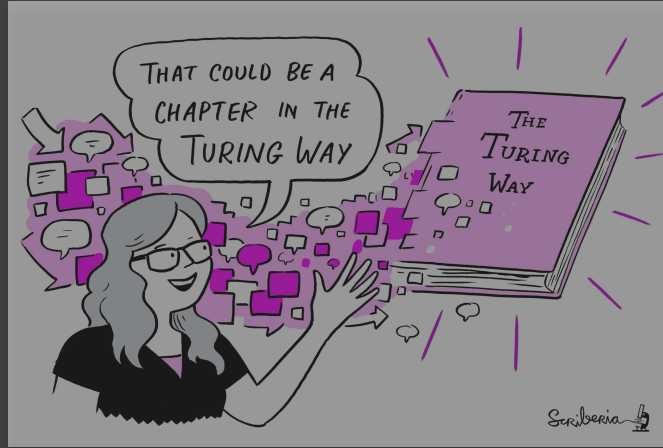
Don't reinvent what is already out there - highlight them!





@turingway, CC-BY 4.0,
[The Turing Way](#)

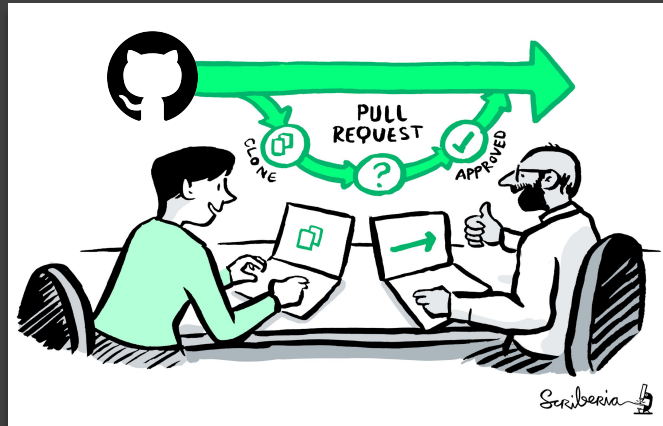
A Book



A Community



An Open Source Project



A Culture of Collaboration



Open Source Project

- Everyone can freely read, reuse, distribute, modify and develop.
- The project **belongs to *The Turing Way* community**.
- **Built on open source** infrastructure:
Git, Jupyter Book, Binder, Netlify:
the-turing-way.netlify.app/welcome



Contributions via GitHub

<https://github.com/alan-turing-institute/the-turing-way>

The Turing Way

read [the book](#) receive [our newsletter](#)   chat [on gitter](#) DOI [10.5281/zenodo.3233853](https://doi.org/10.5281/zenodo.3233853)  TuringWay [I want to contribute!](#)

all contributors [206](#)

This README.md file is also available in Dutch ([README-Dutch](#)), Italian ([README-Italian](#)), Portuguese ([README-Portuguese](#)), and Spanish ([README-Spanish](#)) (listed alphabetically).

The Turing Way is a lightly opinionated guide to reproducible data science. You can read it here: <https://the-turing-way.netlify.com> You're currently viewing the project GitHub repository where all of the bits that make up the guide live, and where the process of writing/building the guide happens.

Our goal is to provide all the information that researchers need at the start of their projects to ensure that they are easy to reproduce at the end.

| | | |
|-----------------------------|--------------------------------------------------------------------------|---------------|
| 📁 .github | Remove prettier configuration | last month |
| 📁 book | minor update | 5 days ago |
| 📁 communications | Fix typos | 14 days ago |
| 📁 conferences | Add KW formatting pedantry | last month |
| 📁 project_management | Update online-collaboration-cafe.md | 14 days ago |
| 📁 templates | Updating Github templates | 11 months ago |
| 📁 tests | Add "et cetera" as a deprecated Latinism | 6 days ago |
| 📁 workshops | Remove mis-pasted text | 13 days ago |
| 📄 .all-contributorsrc | Merge pull request #991 from alan-turing-institute/all-contributors/a... | 5 days ago |
| 📄 .gitignore | ignore pptx in workshop folder | 9 months ago |
| 📄 .travis.yml | add html-proof file again | last month |
| 📄 <u>CODE_OF_CONDUCT.md</u> | her -> their | 6 months ago |
| 📄 <u>CONTRIBUTING.md</u> | Update CONTRIBUTING.md | 2 months ago |
| 📄 GOVERNANCE.md | Read through months later | 5 months ago |
| 📄 LICENSE.md | Fix typo in licence | 2 months ago |
| 📄 <u>README.md</u> | Merge pull request #991 from alan-turing-institute/all-contributors/a... | 5 days ago |
| 📄 book_skeleton.md | Update book_skeleton.md | 13 months ago |
| 📄 <u>contributors.md</u> | Add myself to contributors.md | 11 months ago |

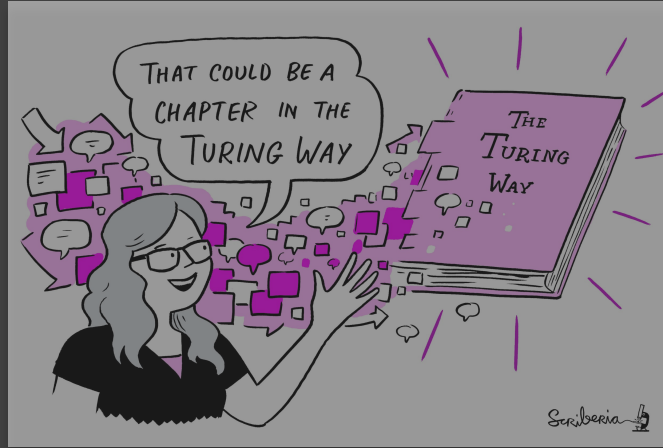
GitHub:

[https://github.com/
alan-turing-institute/
the-turing-way](https://github.com/alan-turing-institute/the-turing-way)



@turingway, CC-BY 4.0,
[The Turing Way](#)

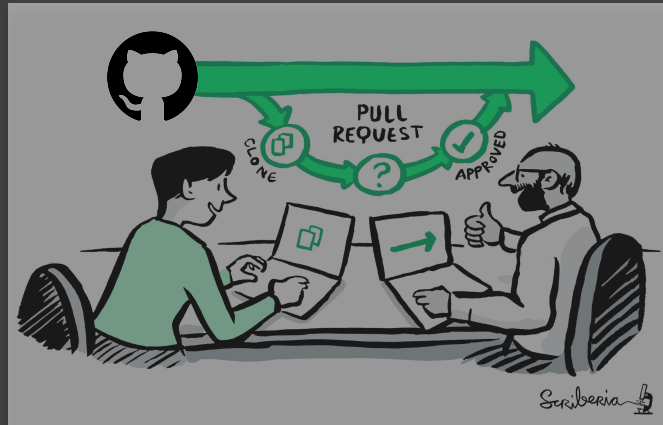
A Book



A Community

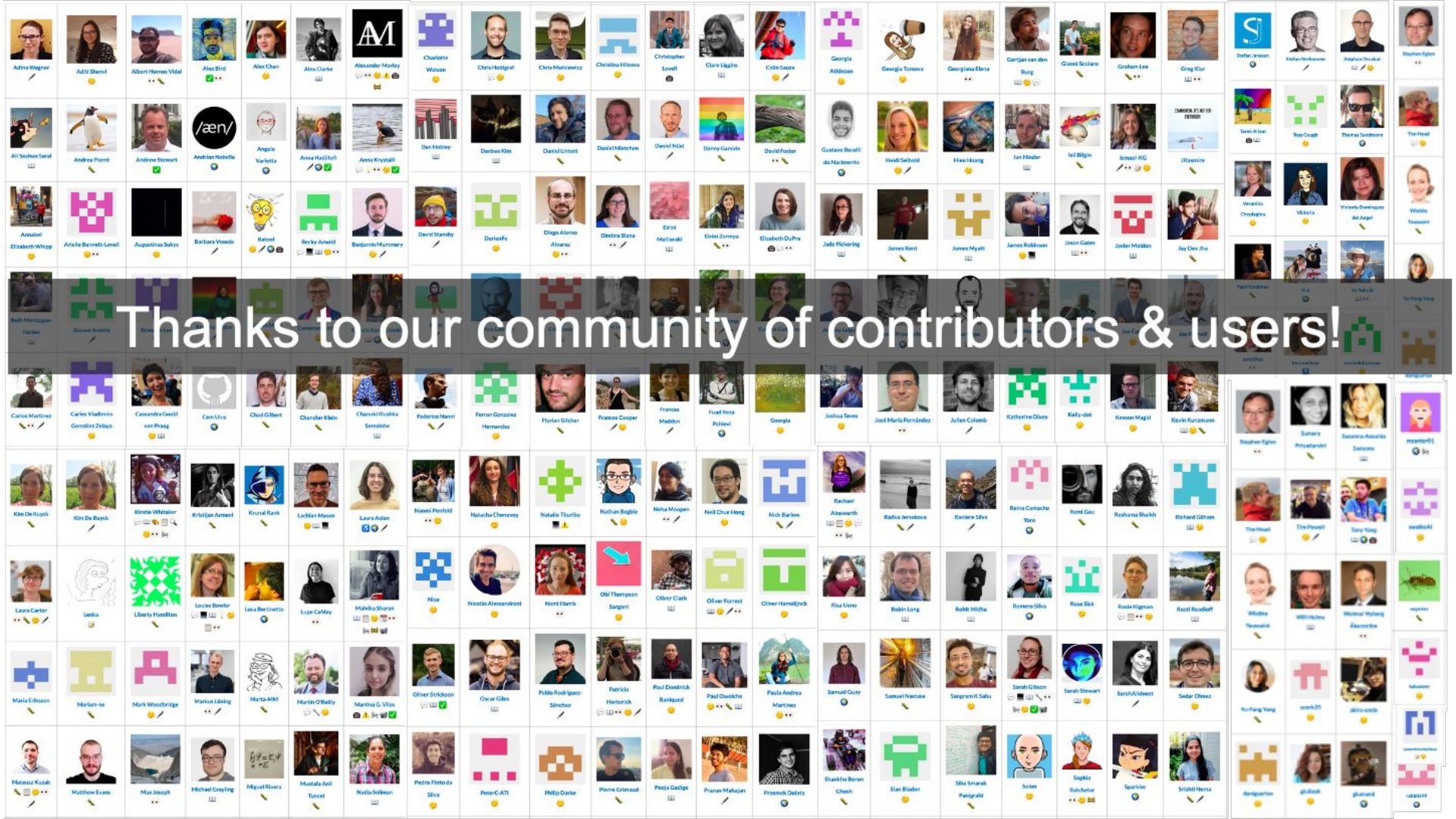


An Open Source Project



A Culture of Collaboration



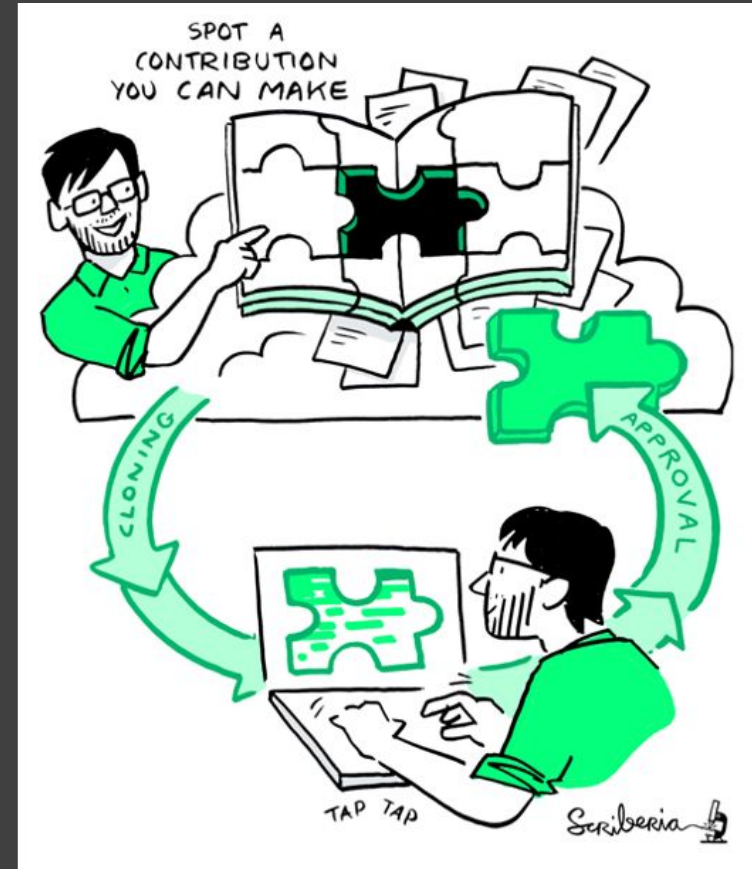


Thanks to our community of contributors & users!

Meeting where you are!

- I. Connect with others
- II. Learn a new skill
- III. Share your skills
- IV. Discuss ideas & collaborate
- V. Mentor others' contributions
- VI. Represent this community

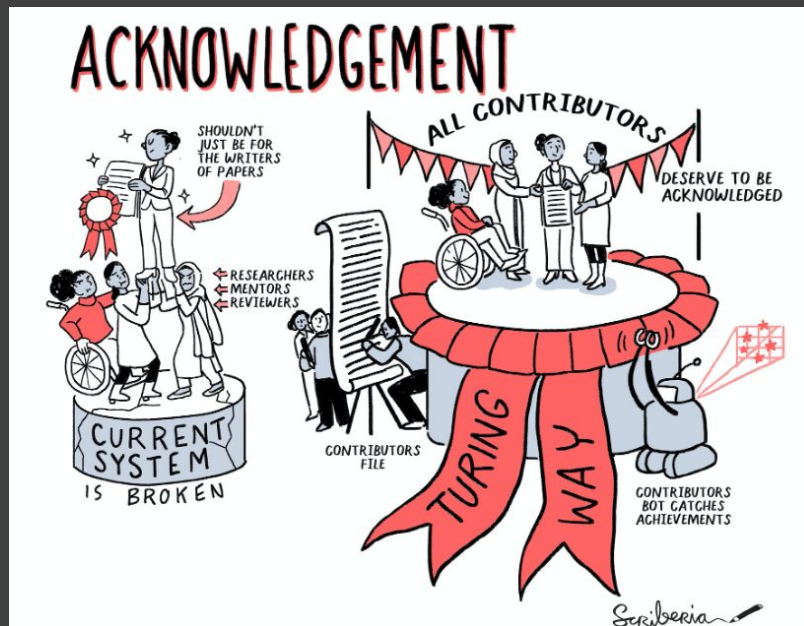
We value your participation!



Acknowledging your work

- All-contributors bot to add your name to the **README.md**
- Adding your personal highlights and impact story in **contributors.md**
- Published on the afterword of online **Contributors Record**

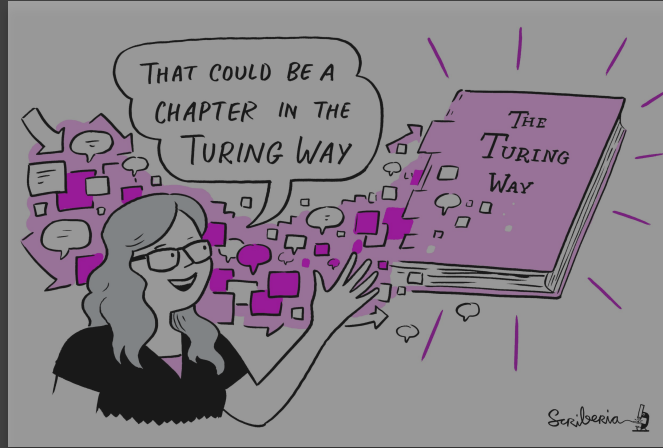
<https://the-turing-way.netlify.app/afterword/contributors-record.html>





@turingway, CC-BY 4.0,
[The Turing Way](#)

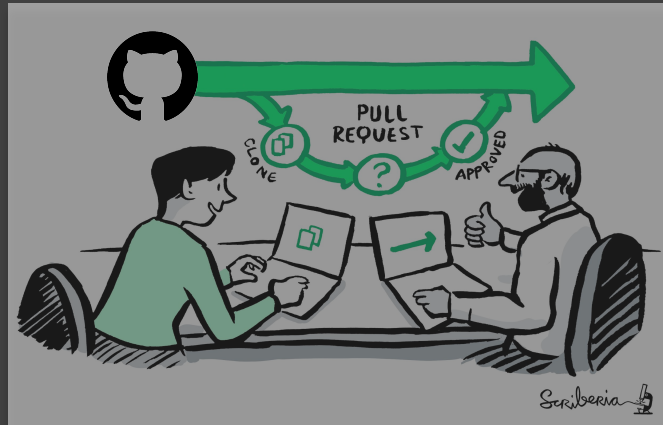
A Book



A Community



An Open Source Project



A Culture of Collaboration



Every contribution counts

The Turing Way fosters a culture of collaboration



Open Leadership principles

Mozilla Open Leadership principles: <https://mozilla.github.io/olm-whitepaper/>
https://github.com/alan-turing-institute/the-turing-way/blob/master/CODE_OF_CONDUCT.md



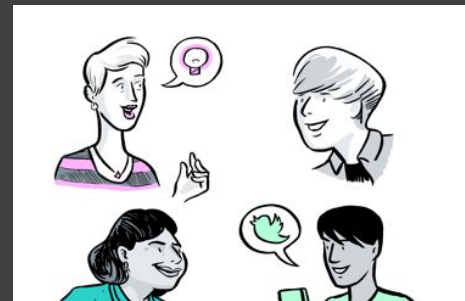
Pathways for Collaboration



Contribute



Maintain & improve



Share resources and discuss



Review and update



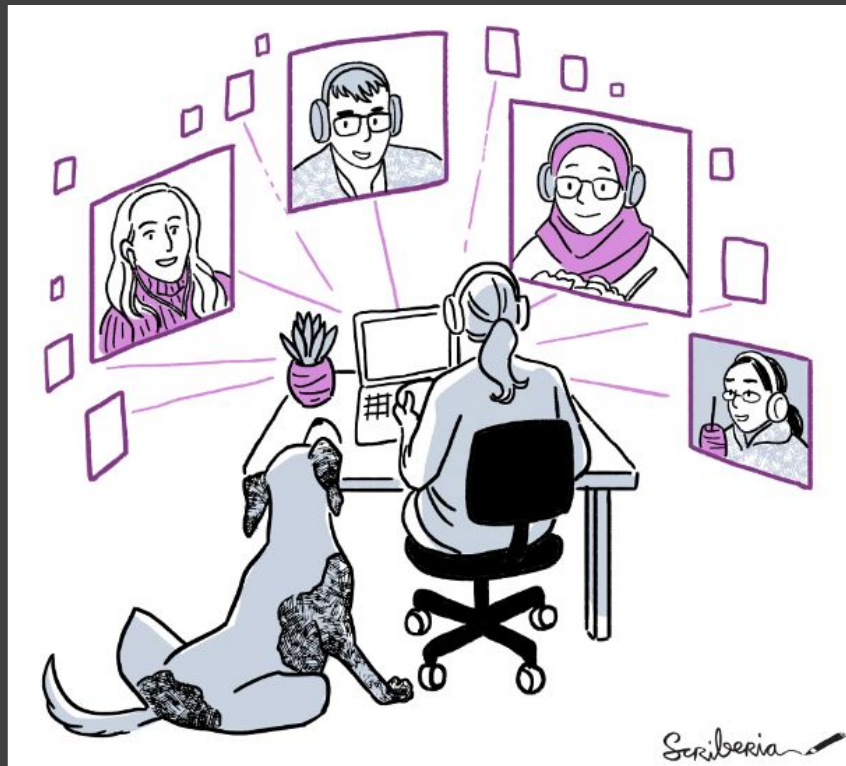
Make it global



Share recommended practices

Community events

- [Collaboration Cafes](#)
 - 1st & 3rd Wednesdays (15:00 UTC)
- [Community coworking](#)
 - Mondays (11:00 UTC)
- [Fireside Chat](#)
 - 3rd or 4th Friday



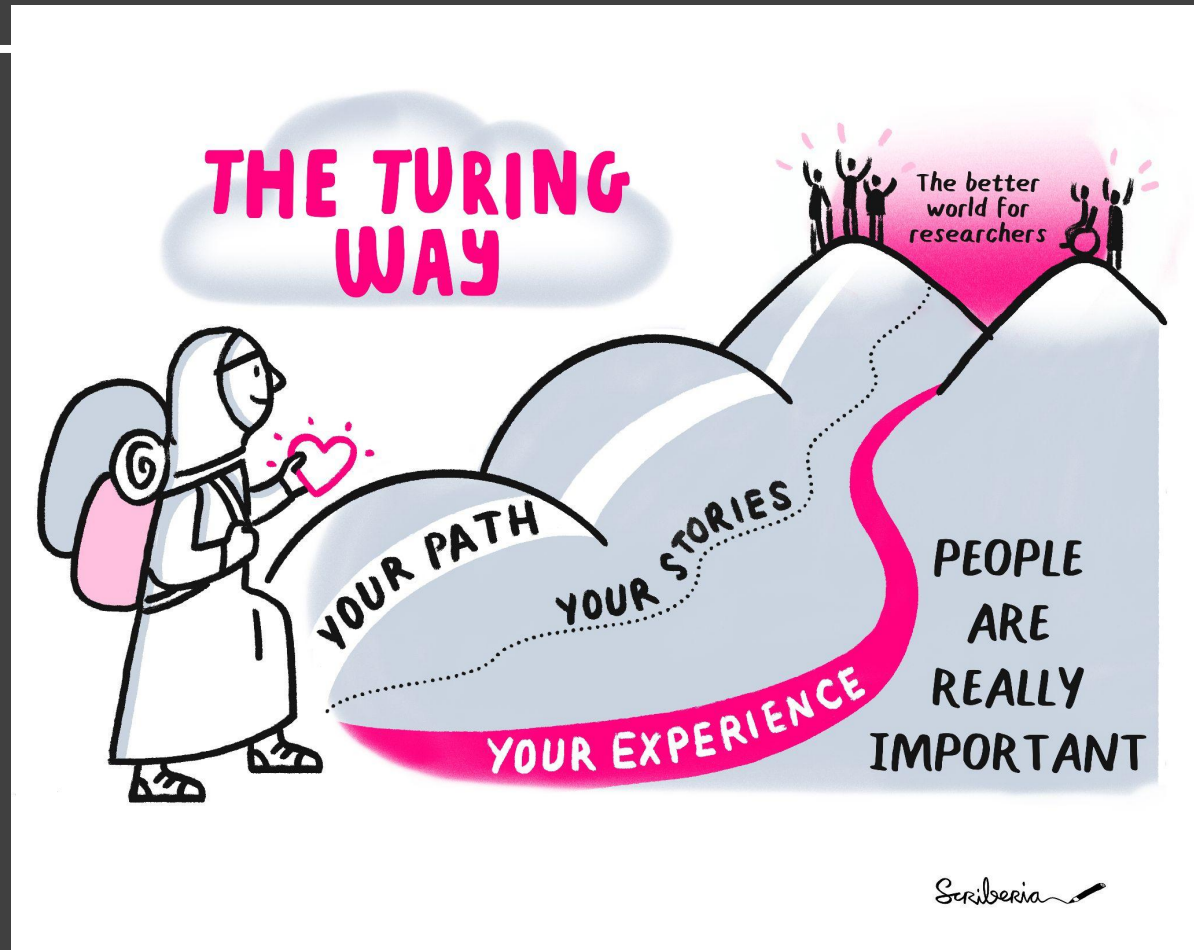
Contributing to *The Turing Way*

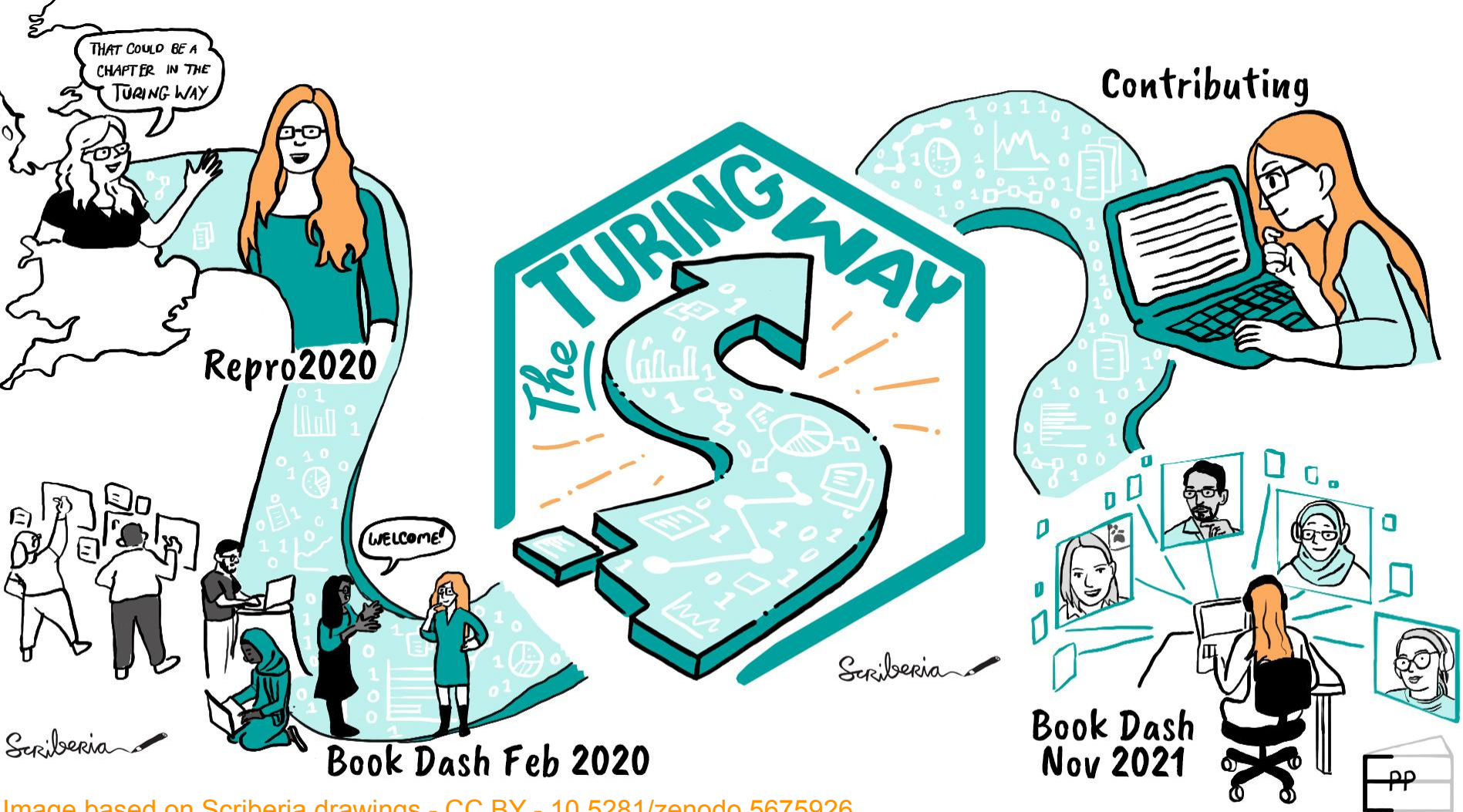


Examples of contributions include:

- science **communication** and **technical writing** skills
- **case studies** of reproducible research
- **editing and reviewing**
- technical **tools and methods** in data science
- reusable resources for **AI and ethics**
- illustrations, sketch notes, and infographics
- **improve accessibility**
- **data visualisation** skills and best practices
- make content more **engaging**
- [Get started!](#)

Your way!





THAT COULD BE A CHAPTER IN THE TURING WAY

Repro2020

The TURING WAY

WELCOME!

Book Dash Feb 2020

Contributing

Book Dash Nov 2021

pp