

## Questioning as we learn: An introduction to critical thinking

### Material for Higher Education students in Sierra Leone by INASP, UK



Provided by the Critical Thinking Taskforce (CTTF) within the project AQHEd-SL

#### Unit 4 - Snippet 94

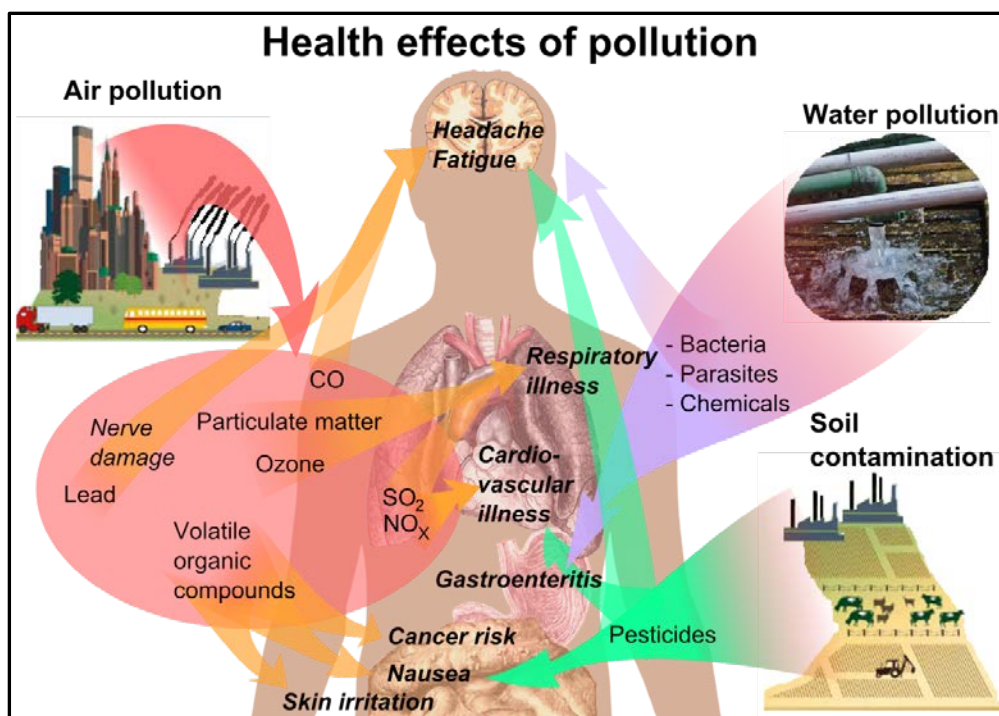


#### Exploratory activity – Diagram 1

Look at the diagram below and answer the following questions. Make notes.

- What items does the diagram depict?
- What kind of relationship do the items have? Are there any causal relationships?
- What happens with the other items if one item increases or decreases?

You only need to think through a couple of relationships; pick two or three items in this info-graphic that are related and answer the questions above.



Info-graphic 'Health effects of pollution' by Mikael Haggström, used with permission. [https://commons.wikimedia.org/wiki/File:Health\\_effects\\_of\\_pollution.png](https://commons.wikimedia.org/wiki/File:Health_effects_of_pollution.png), retrieved 9 May 2017