

Machine learning of cloud types for evaluation of climate models and constraining climate sensitivity

Peter Kuma^{1,*} and Frida Bender¹

¹Stockholm University, Sweden

25 October 2021

*peter.kuma@misu.su.se, peterkuma.net/science

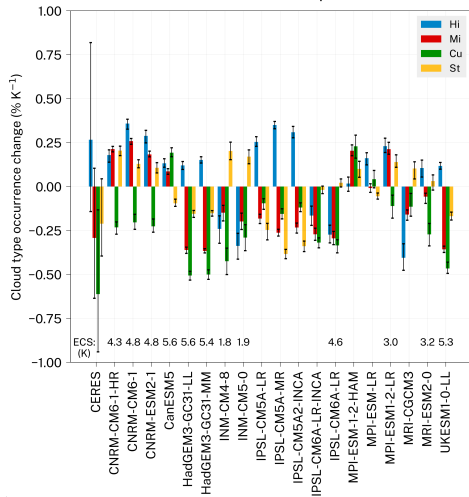
Introduction

- Deep convolutional artificial neural network (TensorFlow) for determination of cloud types in low-resolution daily mean top-of-atmosphere shortwave and longwave radiation images, corresponding to the classical cloud types recorded by human observers in the Global Telecommunication System (GTS).
- Training phase: CERES top of atmosphere radiation.
- Samples: 4000×4000 km samples, 20 per day, centred at random geographical points.
- Labels: Cloud genera as reported by stations within a sample.
- Cloud classes grouped into four classes: cumuliform (Cu, Cb), stratiform (St, Sc), middle (As, Ac), high (Ci, Cs, Cc).
- Application phase: CERES and CMIP6 historical and abrupt-4xCO₂ experiment to determine long-term change in cloud type occurrence in these models with increasing CO₂ concentration.

Comparison of the CMIP abrupt-4xCO₂ experiment with CERES

Cloud type occurrence change with global near-surface air temperature

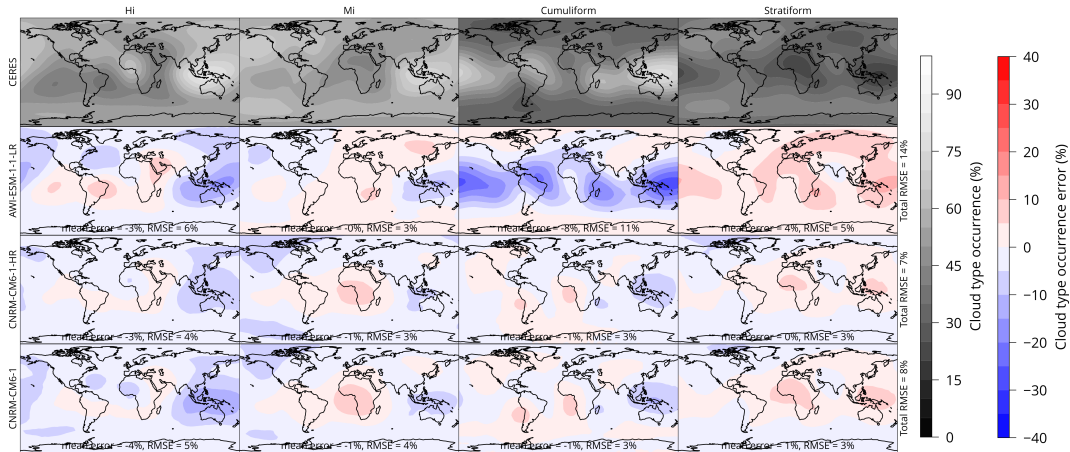
CERES 2003–2020 and CMIP6 abrupt-4xCO₂ 1850–1949*



* 68% error bars and confidence bands.

Comparison of the CMIP historical experiment with CERES

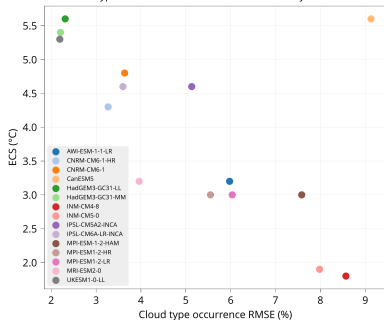
Cloud type occurrence: historical



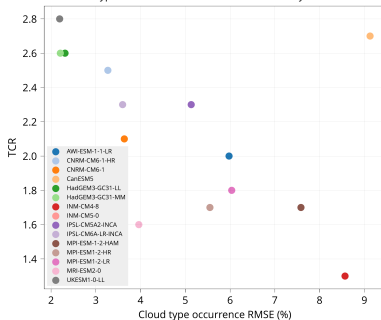
and more models (see our poster on Wednesday)...

Relationship between cloud biases and climate sensitivity

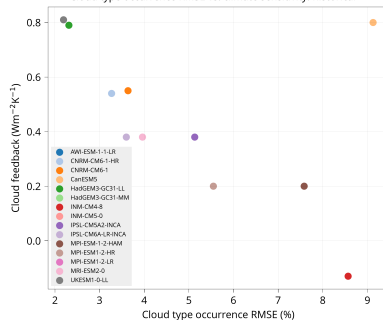
Cloud type occurrence RMSE vs. climate sensitivity: historical



Cloud type occurrence RMSE vs. climate sensitivity: historical



Cloud type occurrence RMSE vs. climate sensitivity: historical



Conclusions

- We developed an artificial neural network (ANN) to identify the occurrence of cloud types in satellite and model data.
- The types correspond to WMO cloud genera, grouped into 4 groups: high, middle, cumuliform and stratiform.
- The training was based on WMO ground station reports and CERES.
- We find large differences between CMIP6 models in their cloud type occurrence relative to CERES.
- The root mean square error (RMSE) of a model correlates strongly with the model equilibrium climate sensitivity (ECS).
- Models with smaller error have greater ECS, transient climate response (TCR) and cloud feedback.