

20190810_BearTrap_Grave01

Processing Report

27 Oktober 2021



Survey Data

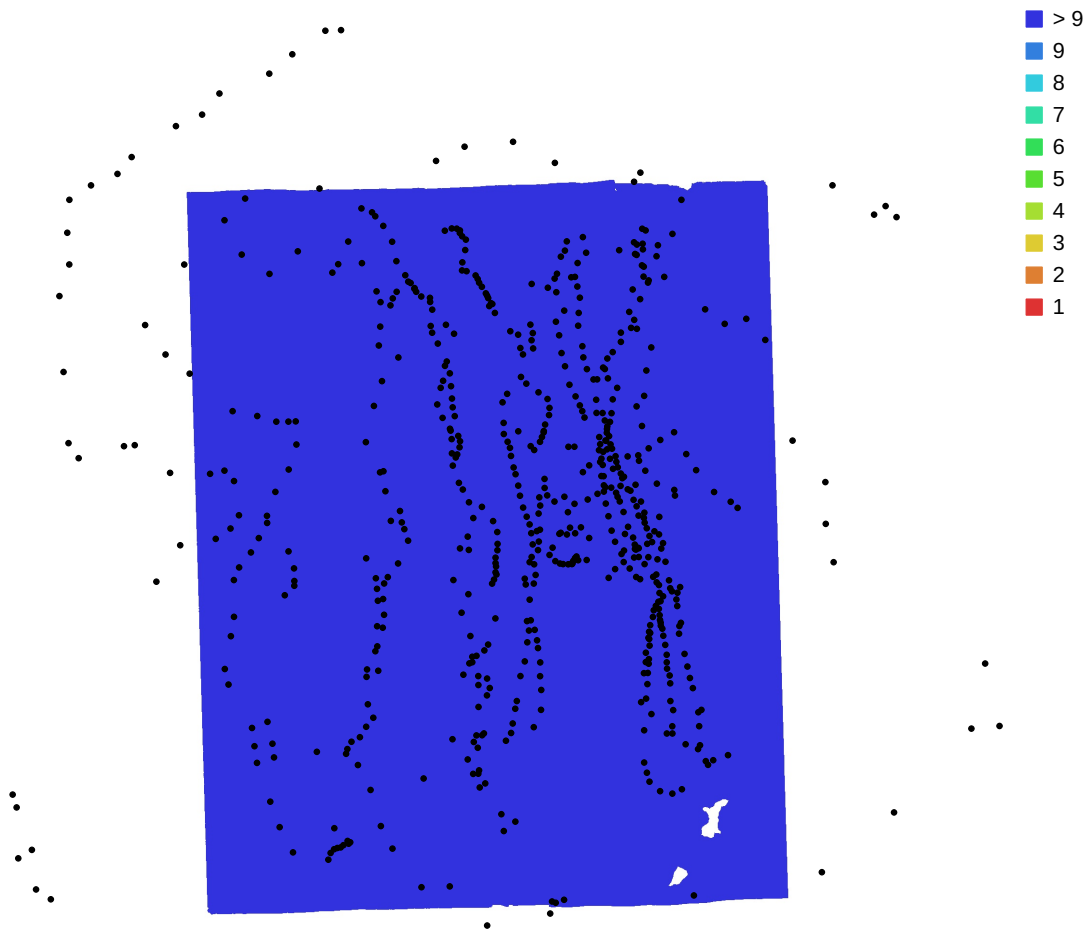


Fig. 1. Camera locations and image overlap.

Number of images: 641

Camera stations: 639

Tie points: 607,327

Projections: 1,751,346

Reprojection error: 0.358 pix

Camera Model	Resolution	Focal Length	Pixel Size	Precalibrated
ILCE-6000 (16mm)	6000 x 4000	16 mm	4 x 4 μ m	No

Table 1. Cameras.

Camera Calibration

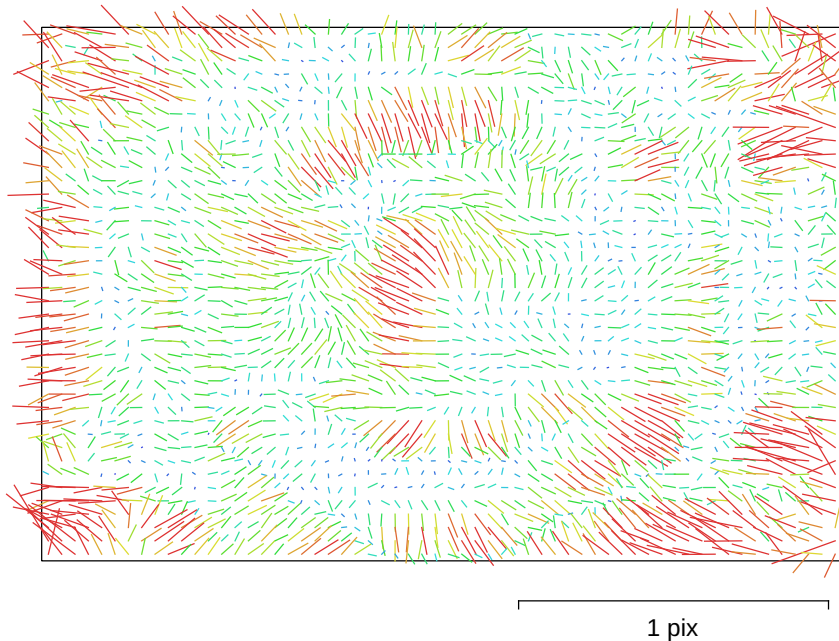


Fig. 2. Image residuals for ILCE-6000 (16mm).

ILCE-6000 (16mm)

641 images

Type	Resolution	Focal Length	Pixel Size
Frame	6000 x 4000	16 mm	4 x 4 μm
F:	4083.8		
Cx:	-63.3208	B1:	-0.111849
Cy:	-29.5147	B2:	-0.405142
K1:	-0.00558067	P1:	-0.000856224
K2:	-0.00368711	P2:	0.000202483
K3:	0.0153141	P3:	0
K4:	-0.00966728	P4:	0

Digital Elevation Model

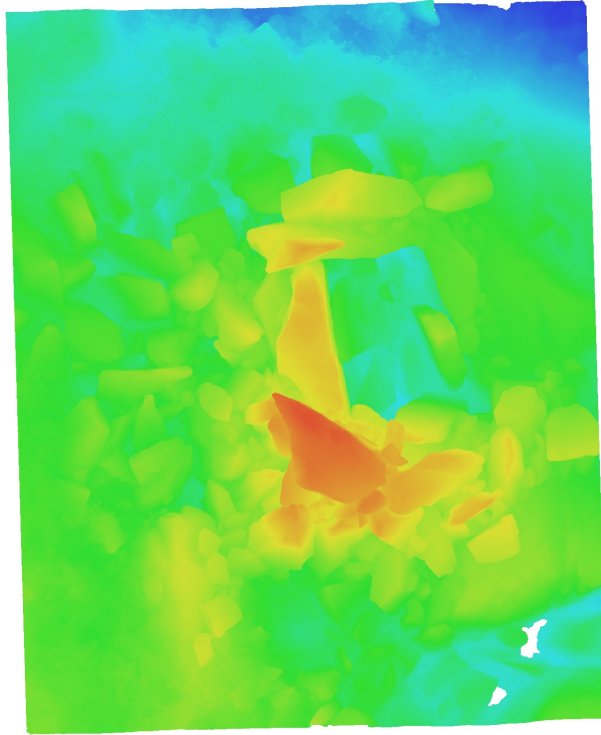


Fig. 3. Reconstructed digital elevation model.

Processing Parameters

General

Cameras	641
Aligned cameras	639
Coordinate system	Local Coordinates (m)
Rotation angles	Yaw, Pitch, Roll

Point Cloud

Points	607,327 of 3,003,225
RMS reprojection error	0.119995 (0.358147 pix)
Max reprojection error	0.264431 (3.15182 pix)
Mean key point size	2.89242 pix
Point colors	3 bands, uint8
Key points	No
Average tie point multiplicity	5.21063

Alignment parameters

Accuracy	High
Generic preselection	Yes
Key point limit	60,000
Tie point limit	0
Filter points by mask	Yes
Mask tie points	No
Adaptive camera model fitting	No
Matching time	1 hours 26 minutes
Alignment time	24 minutes 38 seconds

Optimization parameters

Parameters	f, cx, cy, k1-k3, p1, p2
Adaptive camera model fitting	Yes
Optimization time	12 seconds
File size	261.36 MB

Depth Maps

Count	638
-------	-----

Depth maps generation parameters

Quality	High
Filtering mode	Mild
Processing time	5 hours 1 minutes
Memory usage	10.12 GB
Software version	1.7.1.11797
File size	5.06 GB

Dense Point Cloud

Points	86,872,038
Point colors	3 bands, uint8

Depth maps generation parameters

Quality	High
Filtering mode	Mild
Processing time	5 hours 1 minutes
Memory usage	10.12 GB

Dense cloud generation parameters

Processing time	3 hours 30 minutes
Memory usage	26.69 GB
Software version	1.7.1.11797
File size	2.54 GB

Model

Faces	25,634,607
Vertices	12,825,488
Vertex colors	3 bands, uint8
Texture	4,096 x 4,096, 4 bands, uint8
Depth maps generation parameters	
Quality	High
Filtering mode	Mild
Processing time	5 hours 1 minutes
Memory usage	10.12 GB
Reconstruction parameters	
Surface type	Arbitrary
Source data	Depth maps
Interpolation	Enabled
Strict volumetric masks	No
Processing time	1 hours 31 minutes
Memory usage	11.90 GB
Texturing parameters	
Mapping mode	Generic
Blending mode	Mosaic
Texture size	4,096
Enable hole filling	Yes
Enable ghosting filter	Yes
UV mapping time	6 minutes 15 seconds
UV mapping memory usage	5.64 GB
Blending time	1 hours 3 minutes
Blending memory usage	9.19 GB
Software version	1.7.1.11797
File size	1.09 GB
System	
Software name	Agisoft Metashape Professional
Software version	1.7.1 build 11797
OS	Linux 64 bit
RAM	125.62 GB
CPU	Intel(R) Core(TM) i7-9800X CPU @ 3.80GHz
GPU(s)	Quadro P1000