

Open Science Days in Greece
21-22 October 2021

Challenges in Open Data and Open Science: Tools and Practices

Branko Marović, Vasilije Rajović - University of Belgrade Computer Centre
Milica Ševkušić - Institute of Technical Sciences of SASA
Panagiota Koltsida, Marianna Katrakazi, Christos Liatas, George Panagiotopoulos,
Elli Papadopoulou, Electra Sifakaki, Panoraia Spiliopoulou, Eleni Toli - ATHENA RC

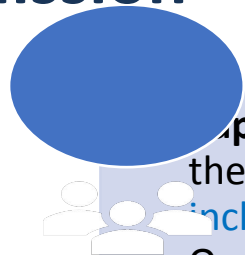
Challenges

- As a researcher, librarian, infrastructure or solution provider I want to do my job and cut on all peripheral grunt work and ceremonies.
- OS is Open, but not unregulated – participation includes a learning curve and, worse, continuous readjustments.
- Requirements, practices, rules, policies, etc. are becoming increasingly complicated and difficult to track and comply with.
- We often hear promises of silver bullets that will provide us one-click solutions for our problems and OS, ORDM, FAIR... nirvana.
- Tools do help, but how to find the right and simple means to your ends?
- How make tools as accessible, future-proof and, still, suitable and fully featured?

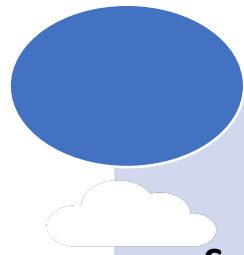
NI4OS - National Initiatives for Open Science in Europe

One of INFRAEOSC-05 projects, 22 partners from 15 countries

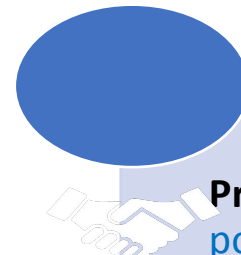
Mission



Support the **development and inclusion** of the national Open Science Cloud (OSC) initiatives in 15 Member States and Associated Countries in the overall scheme of EOSC governance



Spread the **EOSC and FAIR principles** in the community and train it



Provide technical and policy support in on-boarding of the existing and future service providers into EOSC

- NI4OS services for researchers and others
 - Agora catalogue (<https://agora.ni4os.eu/>) of 76 repositories, thematic and generic services that gradually migrate to EOSC Market Place
 - A catalogue of generally available tools - 139 classified tools with rich descriptors
 - <https://docs.google.com/spreadsheets/d/1Sk8YmcUbxoMDelcyEKyXGPxDG61zEmDc>
 - <https://zenodo.org/record/3820880#.YIBfYD-xVQI>
 - EOSC candidate thematic services and demonstrators: examples in life sciences, digital cultural heritage, climate
- Trainings - announcements on the site, invitations to the national community, training materials: <https://training.ni4os.eu/>

NI4OS-Europe developed tools

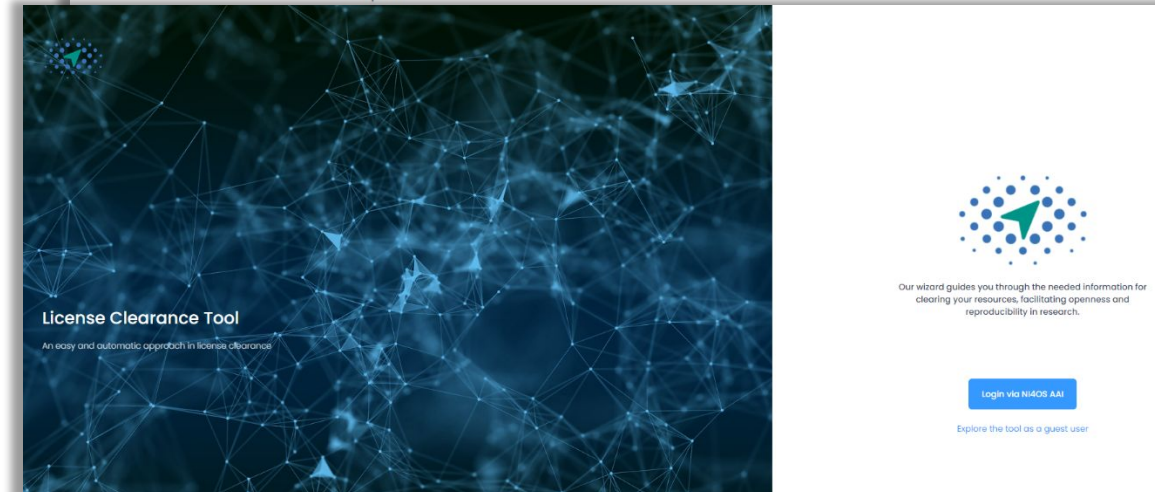
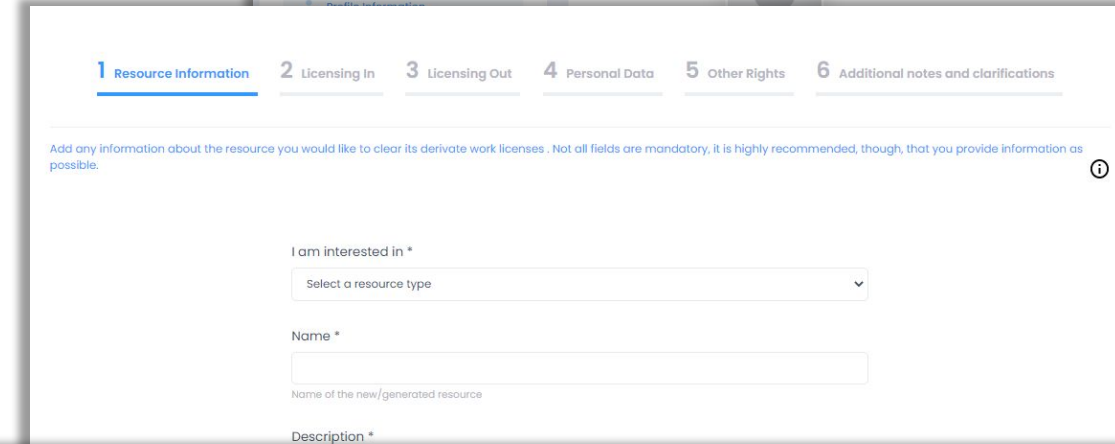
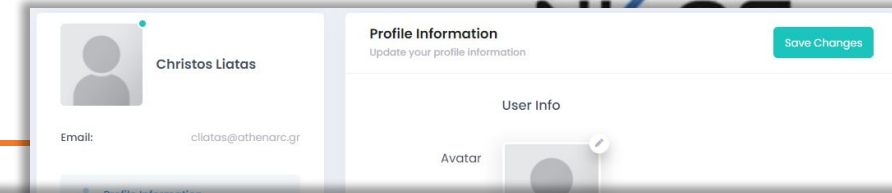
- Address local issues with solutions for the wider EOSC community
- In compliance with EOSC FAIR service requirements from the outset
- Tools for researchers
 - LCT – facilitating IPR decisions
 - RoLECT – dealing with legal and ethical aspects
- Tool for repository and service managers
 - RePol – drafting of repository policies
- Will on-board to the EOSC Marketplace; currently in NI4OS-Europe Agora

LCT – License Clearance Tool

- An intuitive tool for resource license clearance
- Automates the clearance of rights for **derivative** works
- Facilitates FAIRness and **reusability**
- Mitigates legal uncertainty and diminishes costs in the clearance of licensing issues

LCT features

- Wizard-based form to guide you through the required fields
- Two distinct workflows for derivative works
 - Resource driven
 - License driven
- Available for registered and guest users
- Custom report generation with all clearance information
 - Personal & ethics information included if available
- Clearance history for registered users



LCT status and prospects



↗ <https://lct.ni4os.eu/>

Wiki: https://wiki.ni4os.eu/index.php/License_Clearance_Tool_-_Description_and_Documentation

Source: <https://github.com/ni4os-europe/license-clearance-application>

License: [EUPL \(European Union Public License 1.2+\)](#)

OSFair21 demo: <https://youtu.be/LYo5FLnJYJI?t=668s>

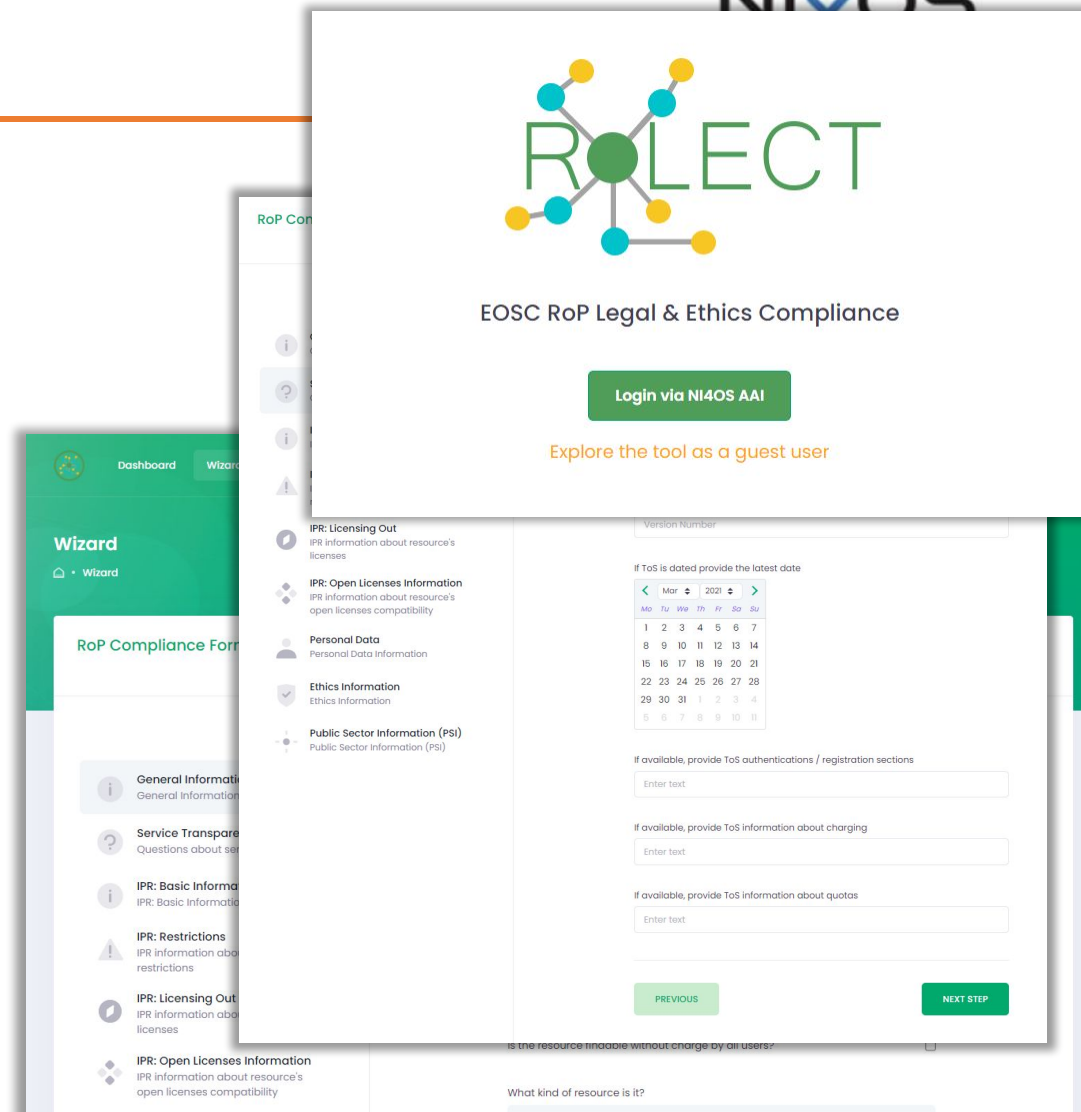
- Extended usability evaluation
- ○ Work on upcoming features: clearance of custom licenses
- Embrace community of legal experts
 - Develop community-driven clearance
 - Crowdsourced license clearance

RoLECT - EOSC RoP Legal & Ethics Compliance Tool

- Self-assessment tool against EOSC RoP focusing on Legal & Ethics aspect
- Designed to promote compliance with EOSC RoP & raise awareness.
- Understand the main priorities of EOSC RoP
- Before starting the onboarding process, prospective resource providers can verify if the resources meet the legal & ethics standards of EOSC RoP
- Quick look at the main priorities of RoP to
 - Proceed to corrective actions for onboarding or
 - Proactively integrate features ensuring compliance into the resource

RoLECT features

- Guided compliance self-assessment for legal and ethics EOSC RoP
- Targets service providers, researchers and research organisations
- Mitigates legal uncertainty and ensures compliance with the key legal and ethical aspects
- Successfully reduces the time for compliance evaluations
- Mainstreams EOSC RoP compliance procedure, tracking changes, identifying and constructing a series of legal and ethical rules
- Will evolve aiming to become a standard assessment for EOSC RoP



RoLECT status and prospects



↗ <https://rolect.ni4os.eu/>

Wiki:

https://wiki.ni4os.eu/index.php/EOSC_RoP_Legal_%26_Ethics_Compliance_-_Description_and_Documentation

Source: <https://github.com/ni4os-europe/rolect-application>

License: [EUPL \(European Union Public License 1.2+\)](#)

OSFair21 demo: <https://youtu.be/LYo5FLnJYJI?t=189>

- Testing use, collection of feedback on the current version
- Ongoing extended usability evaluation
- Various usability enhancements
- Work on validation of user inputs

RePol – Repository Policy Generator

- Managing the repository policy is a serious business - RePol helps guided customisation of predefined content
- Using a template, it drafts the policy that follows good practices
- The result is human- and machine-readable and in line with typical requirements and expectations
- It goes beyond OpenDOAR with Creative Commons licensing, CTS and CORE requirements and extra details on privacy

Repository Policy

2021-05-17 10:30

General Information

Repository name
Enter the name of the repository for which you wish to generate a policy.

Repository URL
Enter the full URL of the repository's home page.

Open Access URL
Enter the URL of the user manual, if available.

Owning organization(s)
Provide the name of the legal entity or legal entity owning the repository. This field is mandatory because the policy must be issued in its name.

Parent organization
If the owner of the repository is a unit within a larger legal entity (e.g., a faculty or an institute within a university), provide the name of the parent organization.

Institutional Open Access/Science policy URL

Policy renewal interval in years 3

Include preamble
Check to include a policy preamble. It contains the basic descriptive information about the repository. You may edit the text even you download the generated policy.

Preferred OpenDOAR policy Bureau Optimum
Formulations describing submission, curricula and preservation policies rely on the wording used by OpenDOAR.

Include Creative Commons license explanation
Check to include a customized explanation of the CC license mentioned in the policy.

Date of the policy document 2021-05-17

Metadata

Restricted access to some metadata
Check the box if the repository contains metadata that is not publicly available.

Flavour of the metadata license CC0 - Creative Commons zero - www.creativecommons.org/licenses/by/4.0/
CC0 - Creative Commons zero - www.creativecommons.org/licenses/by/4.0/

Warn repository owner to use valid metadata
Check to encourage users to use the repository as the source of metadata, even if the metadata license does not require attribution.

Data/Content Access

Restricted access to some items
Check the box if the repository contains some items that are restricted to the general public. Restricted access is usually due to legal limitations, copyright agreements, privacy protection, etc.

Flavour of the content license Descriptive - OpenDOAR style content policy
Some repositories use a number of different license types. If this is the case in your repository, check all applicable options. You may manually edit all licenses, if necessary, once you download the generated policy.

Commented out of items allowed

Content

Repository type institutional

Multi-departmental repositories should be considered institutional, while subject-based ones may additionally require deposits.

Repository subjects

Available	Selected
Arts and humanities general	
Agricultural sciences	
Medical and health sciences	
Natural sciences	
Social sciences	
Engineering and technology	
Applied sciences (biotechnology, digital sciences, biotechnology)	
Mathematics	

Principal languages

Available	Selected
Arabic	
French	
Spanish	
Russian	
Albanian	
American	
Bosnian	
Bulgarian	
Croatian	

Submission

Allowed depositors

Available	Selected
Librarians	
Staff members	
Researcher	
Anonymous	
Alumni	
Students	
General public	

Disallowed items available after embargo expiration
Items may be deposited at any time but will not be available after the expiration of the embargo period.

Accepted content types All types of metadata

File size limit (MB) 0

Size limit is the size that can be uploaded to the repository without requesting special permission. Set 0 for no file size limit.

Versioning

Records are versioned
Links to the latest version of these
Check if your search form has a persistent link to the latest version.

Links between versions
Record versions have links to the older and/or newer versions.

Privacy

Collected user data

Available	Selected
IP address or internal domain of the browser	
IP location (not hidden) with the webpage from which the records were fetched	
Type of browser and operating system access and OS	
Referral time	
Pages visited	

Select all options that apply and add new ones if needed.

Repository is using Google Analytics
Check to include a reference to Google Privacy Policy.

Harvesting

Allow full harvesting of items by robots and aggregators
Most aggregators only harvest metadata. However, some harvest deposited files. Check this if you want to preserve the items in the repository only. Full harvesting is still allowed for full indexing or citations.

Curator

Curator level

- Content is distributed as deposited (without any changes)
- Basic metadata curators (item sharing, linking to related items, etc.)
- Enhanced curators (curators in one format, enhancement of documentation)
- Extra level curators (conversion to new formats, enhancement of documentation and additional curation for accuracy)

Check all options that apply.

Preservation

Retention period in years 0
From the date of depositing items or after the retention period.

If the repository is performed Backup
Check if the repository is regularly backed up.

Migration to new formats
Items will be migrated to new formats to ensure continuity and accessibility, if possible.

Withdrawn records are preserved
Check if records removed from public view remain preserved in the repository.

Links to withdrawn items
Check if withdrawn items' identifiers (URLs and related identifiers)

Long term preservation website
Check if the database is going to be updated to long-term preservation regarding if the repository is closed down.

RePol status and prospects



↗ <https://repol.ni4os.eu/>

Wiki: <https://wiki.ni4os.eu/index.php/RePol>

Source: <https://github.com/RestlessDevil/RePol/>

License: [EUPL \(European Union Public License 1.2+\)](#)

OSFair21 demo: <https://youtu.be/LYo5FLnJYJI?t=1235s>

- Already recognised as ‘the tool’ for **repository polices**
- Now also provides general **Privacy Policy** creation (for GDPR compliance)
- Simple choice-based creation of policy documents
- Multi-step wizard
- Policies can be later recreated with the same or changed data
- Templates and inputs can be easily updated to reflect new needs

Questions?



Thank You!
on behalf of the NI4OS team

Join NI4OS-Europe Community:
<https://ni4os.eu/contact-us>



@NI4OS



@NI4OS_eu



@NI4OS.eu