

How to read the catalog/ list

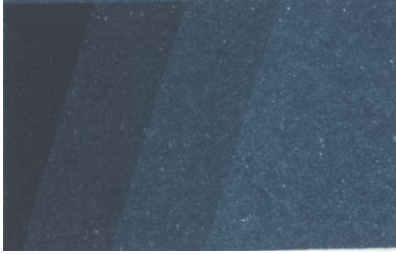
In this document, there are 19 pigment groups. In each pigment group, there will be square images with text below it. The square images are a color rendering of corresponding hyperspectral images of pigment patches. The text below them are information regarding filename, pigment number, and pigment names/ description. In general, they will look like below:



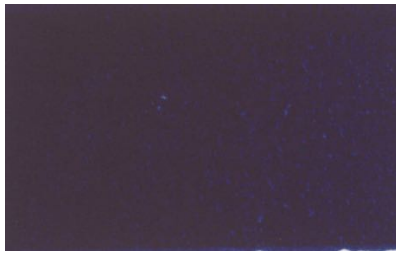
filename

pigment number, pigment name and description

1 Blue-1, Blue Colors 1



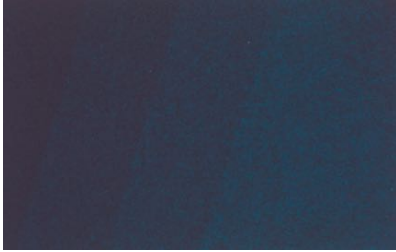
Kremer_BL_1_1_p1
36003, indigo made of woad



Kremer_BL_1_2_p1
23100, indanthren® blue



Kremer_BL_1_3_p1
36009, indigo, synthetic



Kremer_BL_1_1_p2
23080, phthalo blue



Kremer_BL_1_2_p2
23060, phthalo blue royal blue



Kremer_BL_1_3_p2
36000, indigo, genuine



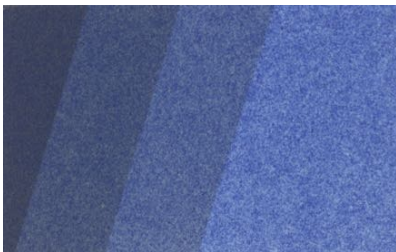
Kremer_BL_1_1_p3
23050, phthalo blue



Kremer_BL_1_2_p3
10200, azurite natural standard



Kremer_BL_1_3_p3
23070, phthalo blue reddish



Kremer_BL_1_1_p4
10010, smalt, very fine



Kremer_BL_1_3_p4
10550, lapis lazuli bright pure blue

2 Blue-2, Blue Colors 2



Kremer_BL_2_1_p1
45820, cobalt violet, light



Kremer_BL_2_2_p1
55900, studio pigment violet



Kremer_BL_2_3_p1
56450, fluorescent pigment violet



Kremer_BL_2_1_p2
45350, manganese violet



Kremer_BL_2_2_p2
45800, cobalt violet, dark



Kremer_BL_2_3_p2
45810, cobalt violet brilliant, dark



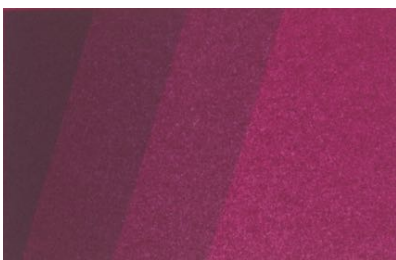
Kremer_BL_2_1_p3
45100, ultramarine violet, medium



Kremer_BL_2_2_p3
45110, ultramarine violet, reddish



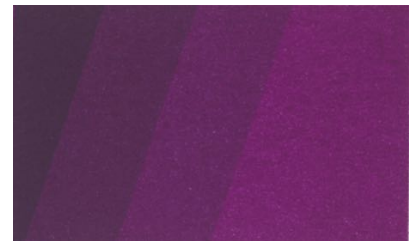
Kremer_BL_2_3_p3
45120, ultramarine violet, light reddish



Kremer_BL_2_1_p4
23401, hostaperm pink, transparent

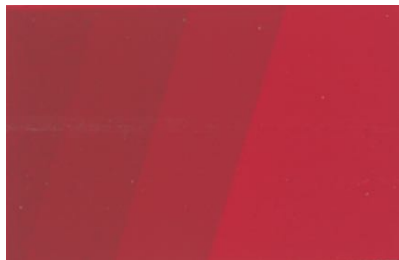


Kremer_BL_2_2_p4
23451, dioxazine violet

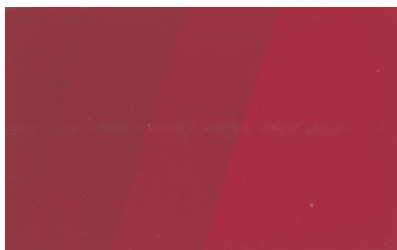


Kremer_BL_2_3_p4
23750, alizarine violet

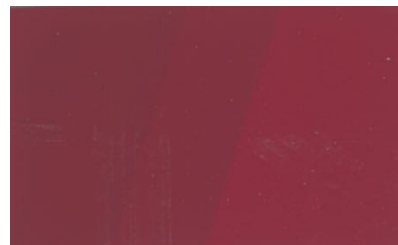
3 Cadmium



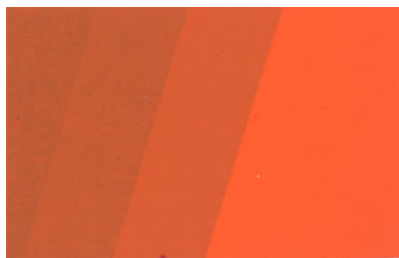
Kremer_CD_1_1_p1
21120, cadmium red no.1, light



Kremer_CD_1_2_p1
21130, cadmium red no.2, medium



Kremer_CD_1_3_p1
21140, cadmium red no.3, dark



Kremer_CD_1_1_p2
21090, cadmium orange no.0.5,
light



Kremer_CD_1_2_p2
21100, cadmium orange no.1,
medium



Kremer_CD_1_3_p2
21110, cadmium orange no.2, ver-
milion



Kremer_CD_1_1_p3
21040, cadmium yellow no.6,
medium



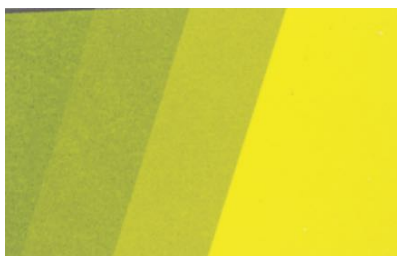
Kremer_CD_1_2_p3
21060, cadmium yellow no.9, dark



Kremer_CD_1_3_p3
21080, cadmium orange no.0, very
light



Kremer_CD_1_1_p4
21010, cadmium yellow lemon no.1



Kremer_CD_1_2_p4
21020, cadmium yellow no.2, very
light



Kremer_CD_1_3_p4
21030, cadmium yellow no.4, light

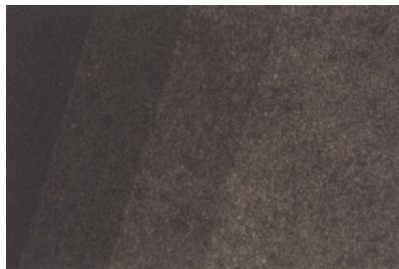


Kremer_CD_2_1_p1
44510, cadmium green, dark

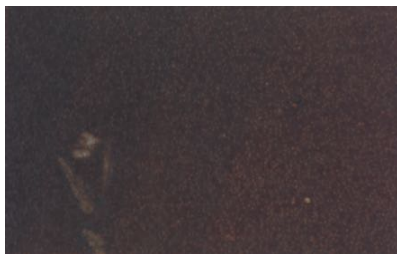


Kremer_CD_2_1_p2
44500, cadmium green, light

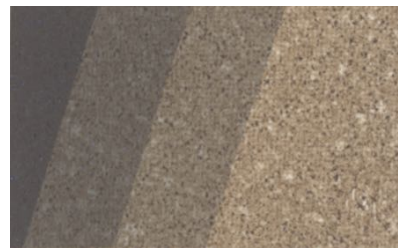
4 Earth-Brown-Black, Earth Colors (Brown, Black)



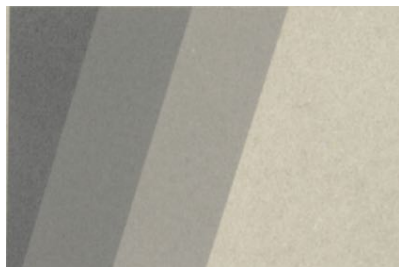
Kremer_EB_1_1_p1
41000, van dyck brown



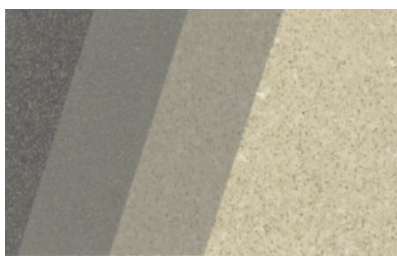
Kremer_EB_1_2_p1
41050, cassel brown, wood stain



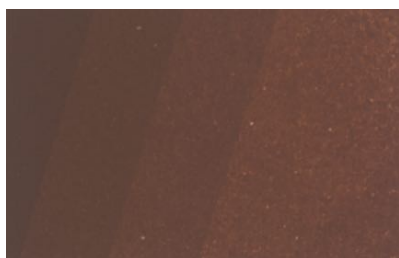
Kremer_EB_1_3_p1
40960, pencil clay, powder



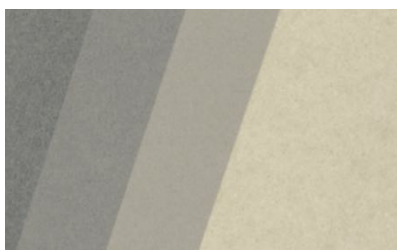
Kremer_EB_1_1_p2
40920, slate gray, gray-green



Kremer_EB_1_3_p2
40911, slate gray, light, greenish

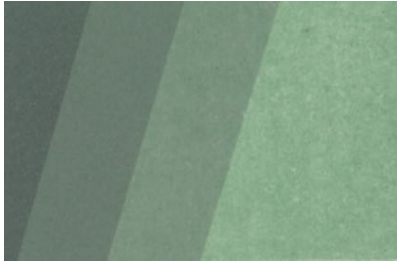


Kremer_EB_1_1_p3
40231, brown ochre light

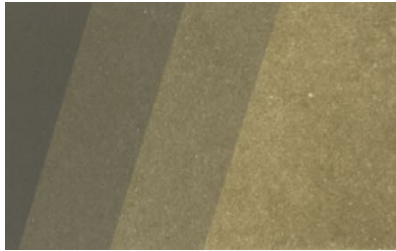


Kremer_EB_1_2_p3
40900, slate gray, extra light

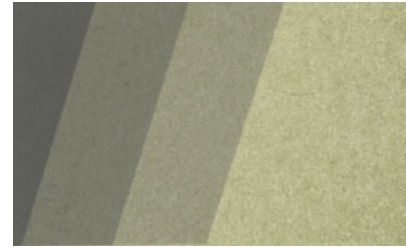
5 Earth-Green, Earth Colors (Green)



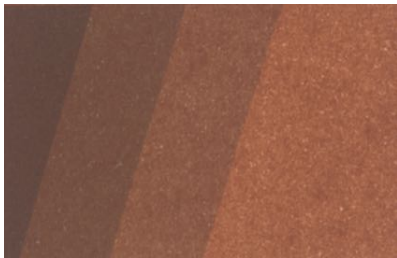
Kremer_EG_1_1_p1
41770, nicosia green



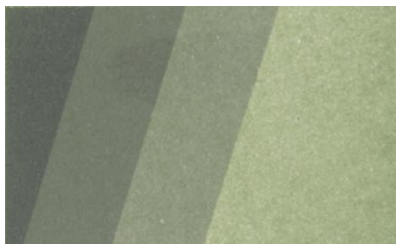
Kremer_EG_1_2_p1
41800, bohemian green earth, im-
itation



Kremer_EG_1_3_p1
41820, verona green earth, imita-
tion



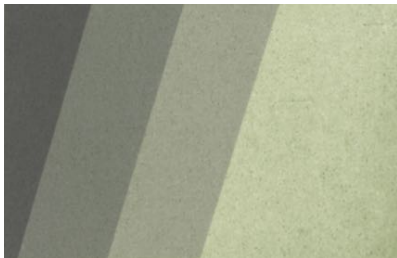
Kremer_EG_1_1_p2
40850, burnt green earth



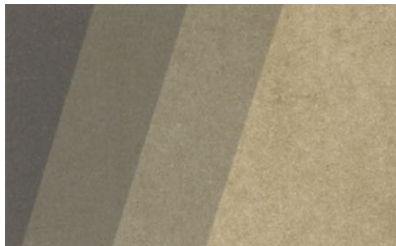
Kremer_EG_1_2_p2
41700, verona green earth



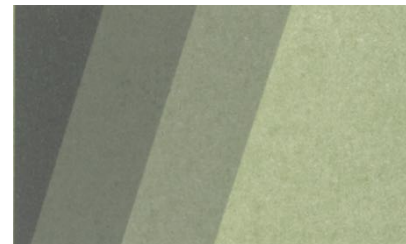
Kremer_EG_1_3_p2
41750, vagone green earth



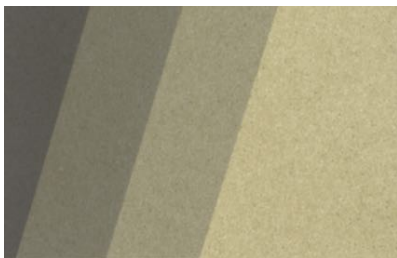
Kremer_EG_1_1_p3
40810, bohemian green earth



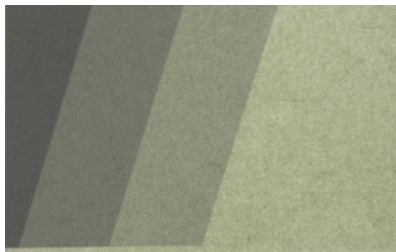
Kremer_EG_1_2_p3
40821, green earth from verona



Kremer_EG_1_3_p3
40830, green earth from france



Kremer_EG_1_1_p4
17400, green earth, from cyprus

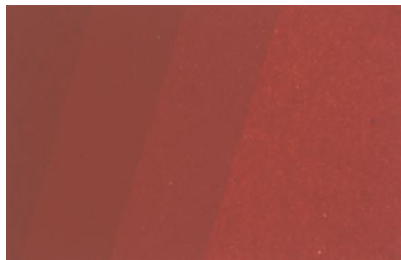


Kremer_EG_1_2_p4
17410, bluish green earth, from
cyprus

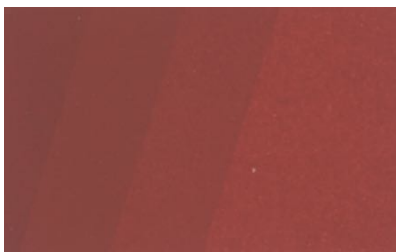


Kremer_EG_1_3_p4
40800, green earth light

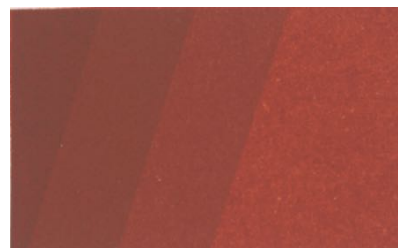
6 Earth-Red, Earth Colors (Red)



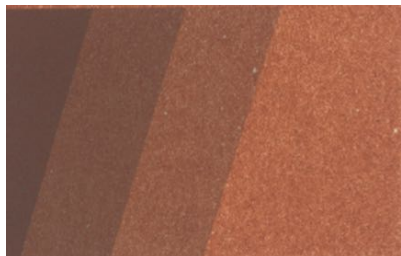
Kremer_ER_1_1_p1
40542, english red light



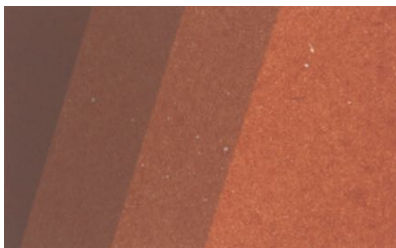
Kremer_ER_1_2_p1
40545, english red deep



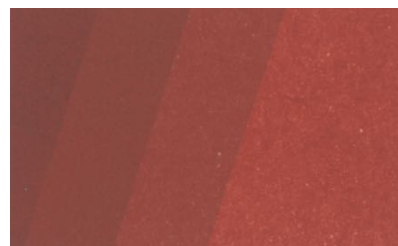
Kremer_ER_1_3_p1
41550, terra pozzuoli



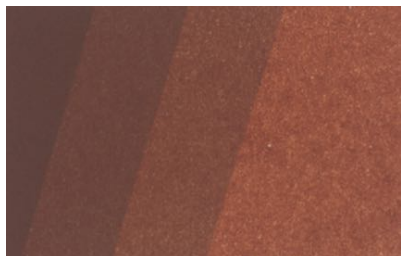
Kremer_ER_1_1_p2
40490, rosso sartorius



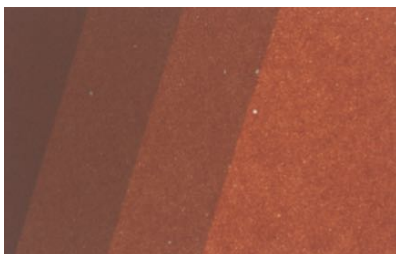
Kremer_ER_1_2_p2
40503, red bole



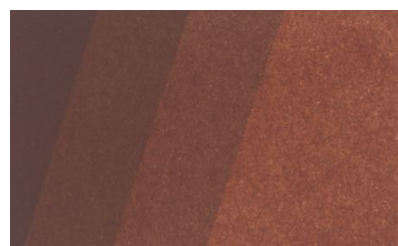
Kremer_ER_1_3_p2
40510, venetian red



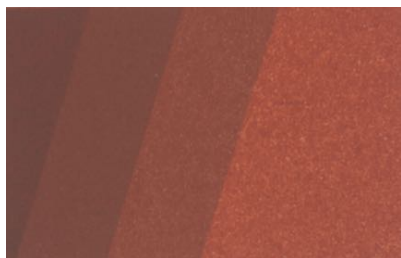
Kremer_ER_1_1_p3
40430, dark burnt sienna



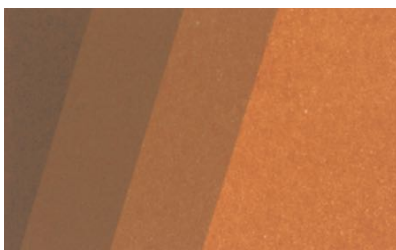
Kremer_ER_1_2_p3
40440, pompeii red



Kremer_ER_1_3_p3
40470, burnt sienna, from france



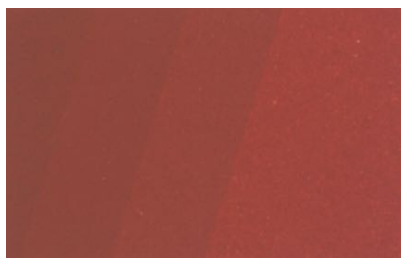
Kremer_ER_1_1_p4
40020, french ochre RTFLES



Kremer_ER_1_2_p4
40080, french ochre HAVANE

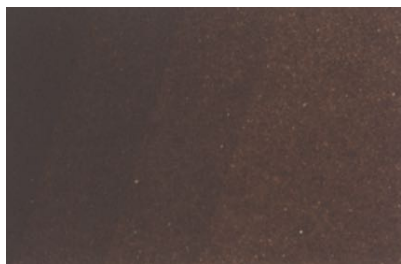


Kremer_ER_1_3_p4
40090, french ochre SOFOROUGE

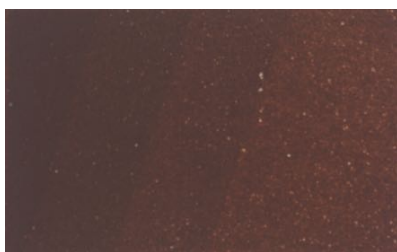


Kremer_ER_2_1_p1
41600, terra ercolano

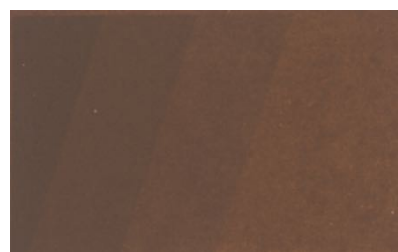
7 Earth-Umbrae, Earth Colors (Umbrae)



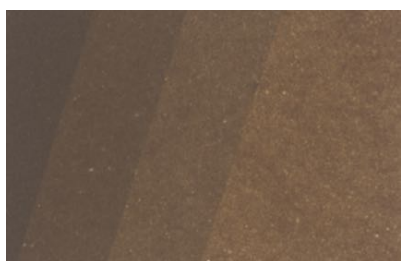
Kremer_EU_1_1_p1
40720, burnt umber, dark brown



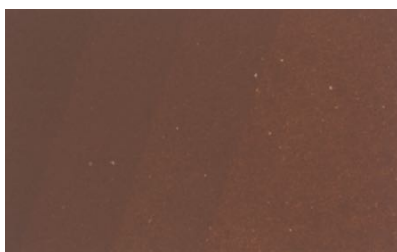
Kremer_EU_1_2_p1
40723, burnt umber, type B



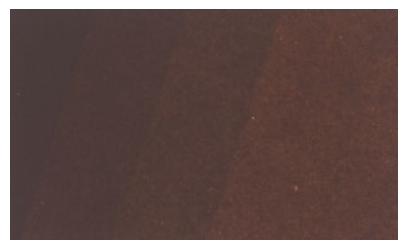
Kremer_EU_1_3_p1
40730, burnt umber light,
reddish-brown



Kremer_EU_1_1_p2
40660, raw umber, dark



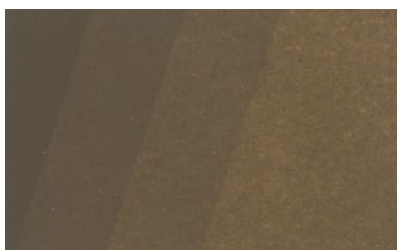
Kremer_EU_1_2_p2
40700, burnt umber, reddish



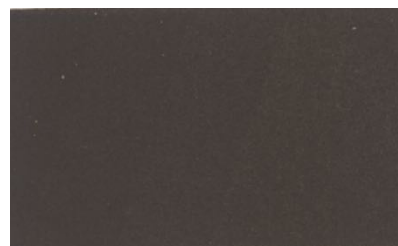
Kremer_EU_1_3_p2
40710, burnt umber, brownish



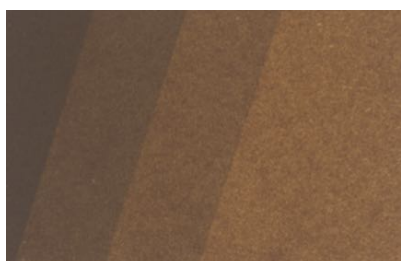
Kremer_EU_1_1_p3
40623, manganese brown intense



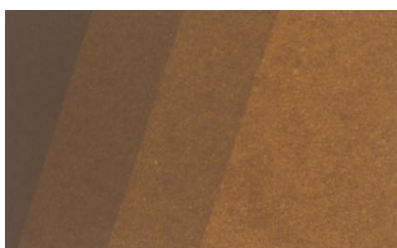
Kremer_EU_1_2_p3
40630, raw umber greenish dark



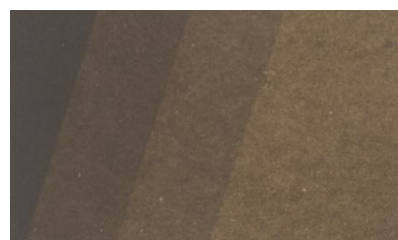
Kremer_EU_1_3_p3
40650, chromite



Kremer_EU_1_1_p4
40610, raw umber

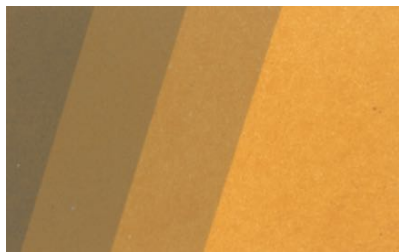


Kremer_EU_1_2_p4
40611, raw umber, light

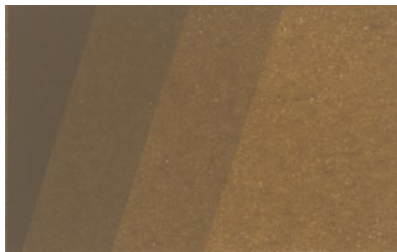


Kremer_EU_1_3_p4
40612, raw umber, greenish

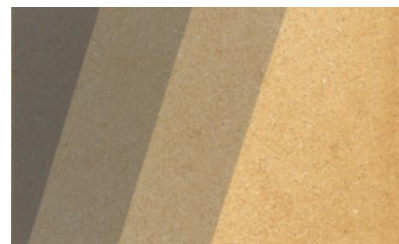
8 Earth-Yellow-1, Earth Colors (Yellow)



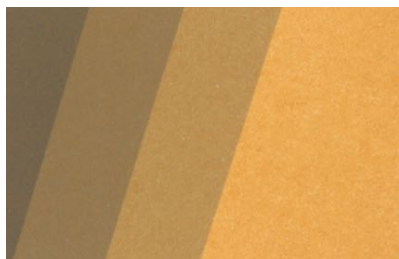
Kremer_EY_1_1_p1
40070, french ochre SOFODOR



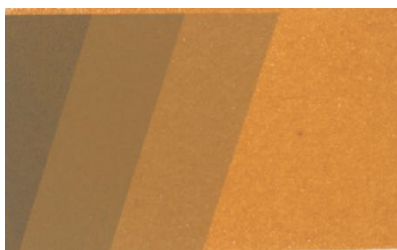
Kremer_EY_1_2_p1
40130, french ochre SAHARA



Kremer_EY_1_3_p1
40195, gold ochre, from poland



Kremer_EY_1_1_p2
40040, french ochre JCLES



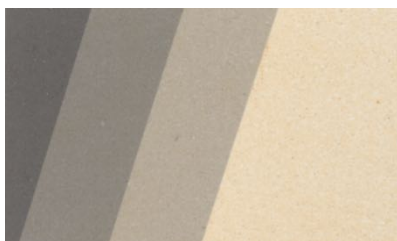
Kremer_EY_1_2_p2
40050, french ochre JFLES



Kremer_EY_1_3_p2
40060, french ochre JALS



Kremer_EY_1_1_p3
40012, french ochre, very light



Kremer_EY_1_2_p3
40013, french ochre, extra light



Kremer_EY_1_3_p3
40030, french ochre JOLES



Kremer_EY_1_1_p4
17000, jarosite, from cyprus



Kremer_EY_1_2_p4
17050, natural sienna, monte ami-
ata

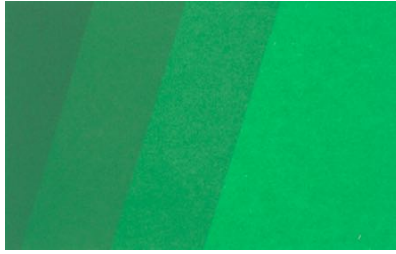


Kremer_EY_1_3_p4
40010, french ochre, JTCLES

9 Green-1, Green Colors 1



Kremer_GR_1_1_p1
55700, studio pigment light green



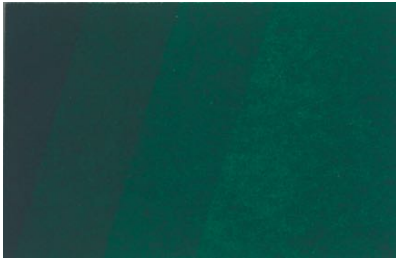
Kremer_GR_1_2_p1
55800, studio pigment dark green



Kremer_GR_1_1_p2
44500, cadmium green, light



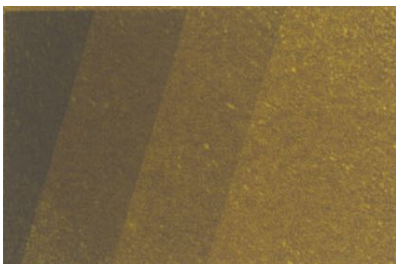
Kremer_GR_1_2_p2
44510, cadmium green, dark



Kremer_GR_1_1_p3
23000, phthalo green dark



Kremer_GR_1_2_p3
23010, phthalo green, yellowish

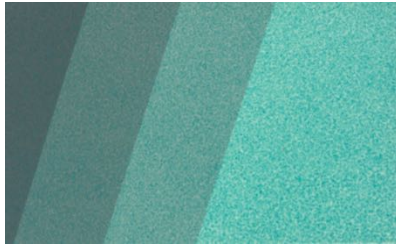


Kremer_GR_1_1_p4
28020, kremer color paste -
irgazin® yellow, greenish

10 Green-2, Green Colors 2



Kremer_GR_2_1_p1
44400, malachite, synthetic



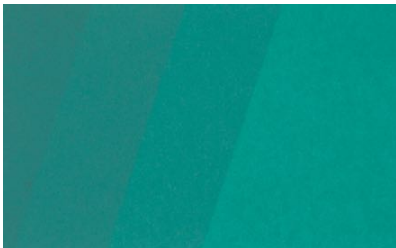
Kremer_GR_2_2_p1
44450, verdigris, synthetic



Kremer_GR_2_1_p2
44204, chrome oxide green DD



Kremer_GR_2_2_p2
44250, viridian green



Kremer_GR_2_1_p3
44151, cobalt green bluish A



Kremer_GR_2_2_p3
44190, pastel green, victoria green



Kremer_GR_2_1_p4
44100, cobalt green



Kremer_GR_2_2_p4
44110, cobalt oxide green blue

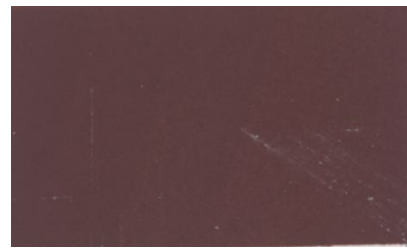
11 Iron-Oxides-1, Iron Oxides and Translucent Pigments 1



Kremer_IR_1_1_p1
48600, iron oxide red, natural



Kremer_IR_1_2_p1
48651, haematite, intense tinting



Kremer_IR_1_3_p1
48700, caput mortuum reddish



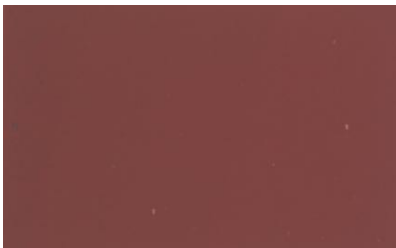
Kremer_IR_1_1_p2
48220, caput mortuum synthetic
180 M



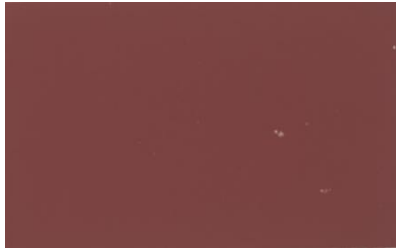
Kremer_IR_1_2_p2
48250, iron oxide red 222, dark



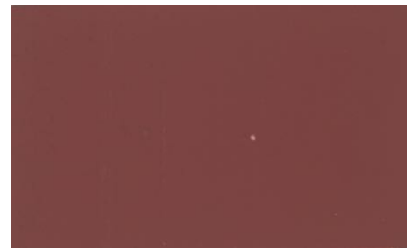
Kremer_IR_1_3_p2
48289, iron oxide red micronized



Kremer_IR_1_1_p3
48120, iron oxide red 120 M



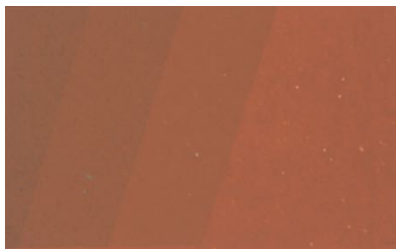
Kremer_IR_1_2_p3
48150, iron oxide red 130 B,
medium



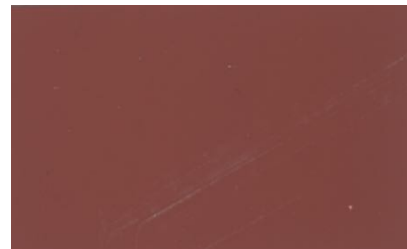
Kremer_IR_1_3_p3
48200, iron oxide red 130 M,
medium



Kremer_IR_1_1_p4
48050, iron oxide yellow-orange,
gamma

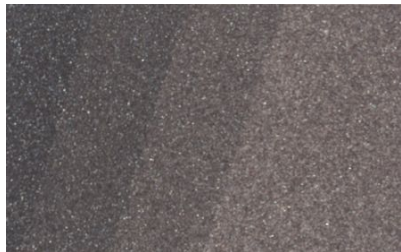


Kremer_IR_1_2_p4
48060, iron oxide orange 960,
light

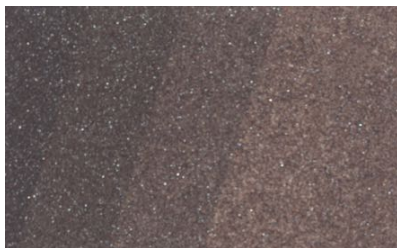


Kremer_IR_1_3_p4
48100, iron oxide red 110 M, light

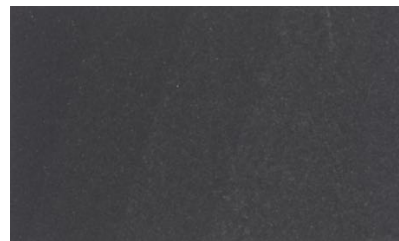
12 Iron-Oxides-4-5, Iron Oxides and Translucent Pigments 4 and 5



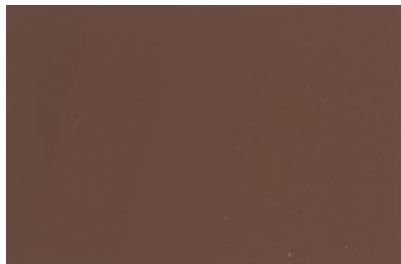
Kremer_IR_4_2_p1
48910, natural iron glimmer



Kremer_IR_4_3_p1
48930, iron glimmer violet



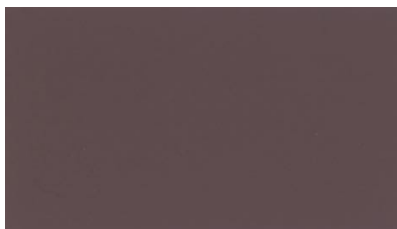
Kremer_IR_4_3_p2
48804, magnetite fine



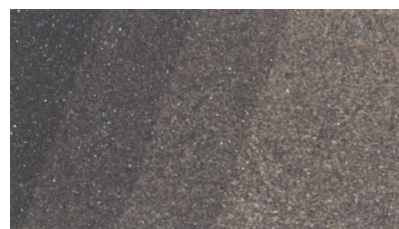
Kremer_IR_4_1_p4
48300, iron oxide brown 610, light



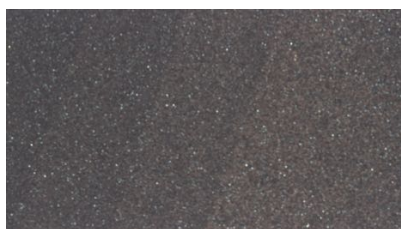
Kremer_IR_5_1_p1
48941, iron glimmer from morocco, very fine



Kremer_IR_5_1_p2
48933, iron glimmer violet, extra fine

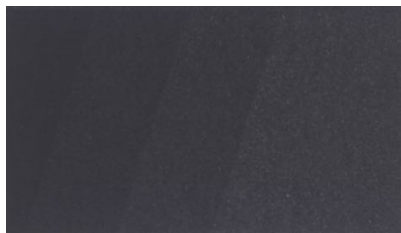


Kremer_IR_5_2_p2
489623, spanish haematite, medium

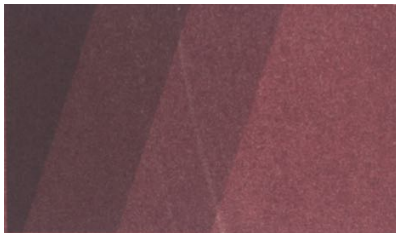


Kremer_IR_5_2_p3
489621, spanish haematite, fine

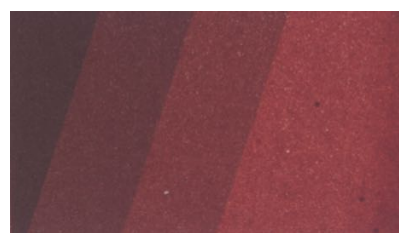
13 Organic-Brown-Green, Organic Pigments (Brown/ Black, Green)



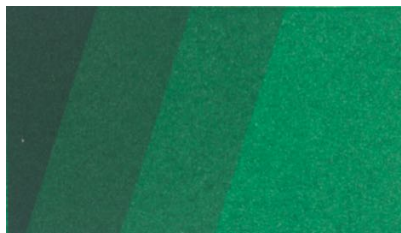
Kremer_OB_1_1_p1
24100, aniline black



Kremer_OB_1_1_p2
23500, paliogen® maroon



Kremer_OB_1_1_p3
23480, cinquasia® chestnut
brown

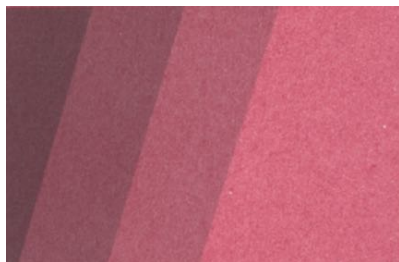


Kremer_OG_1_1_p1
23010, phthalo green, yellowish



Kremer_OG_1_1_p2
23000, phthalo green dark

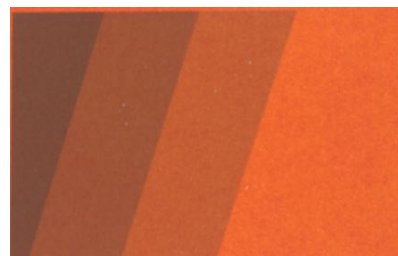
14 Organic-Orange-2, Organic Pigments (Orange, Red)



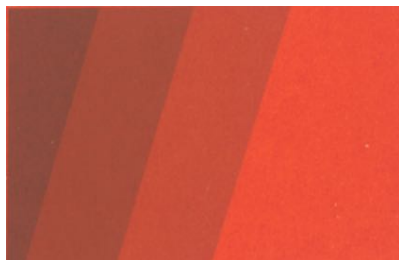
Kremer_OO_2_1_p1
23610, alizarine crimson dark



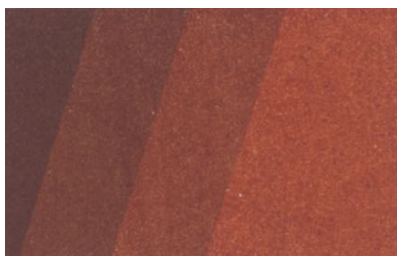
Kremer_OO_2_2_p1
23720, hostaperm® red



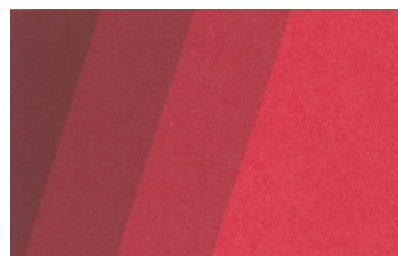
Kremer_OO_2_3_p1
23800, isoindolol orange



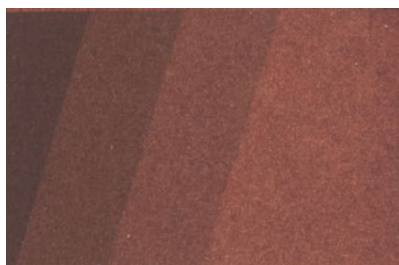
Kremer_OO_2_1_p2
23570, pyranthrone orange



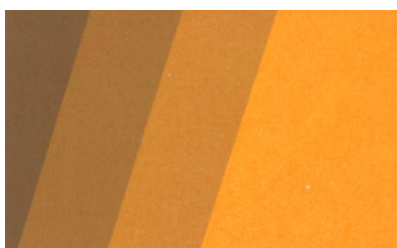
Kremer_OO_2_2_p2
23585, cinquasia® gold, red-gold



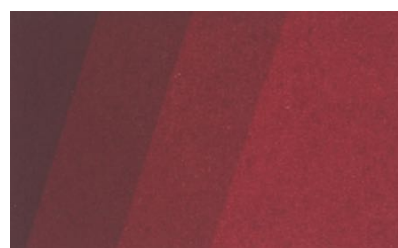
Kremer_OO_2_3_p2
23600, alizarine crimson light



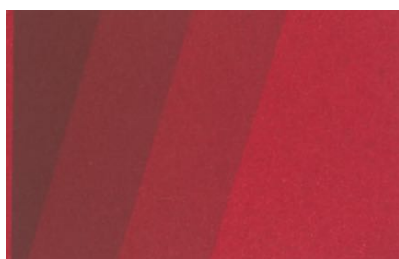
Kremer_OO_2_1_p3
23493, gubbio red



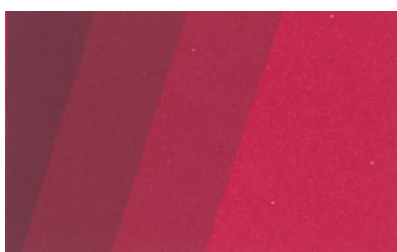
Kremer_OO_2_2_p3
23540, paliotol® orange



Kremer_OO_2_3_p3
23490, purple-red

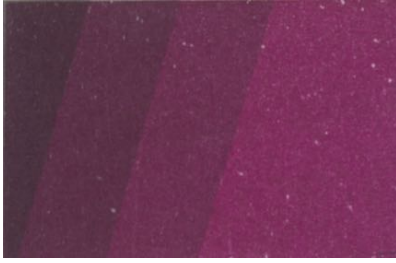


Kremer_OO_2_1_p4
23293, CPT - red

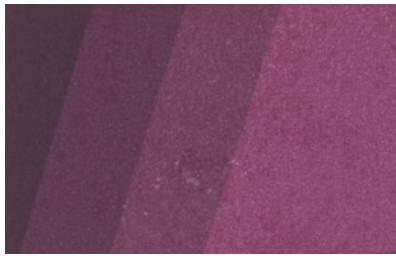


Kremer_OO_2_2_p4
23402, quindo® pink D

15 Organic-Blue-Violet, Organic Pigments (Blue, Violet)



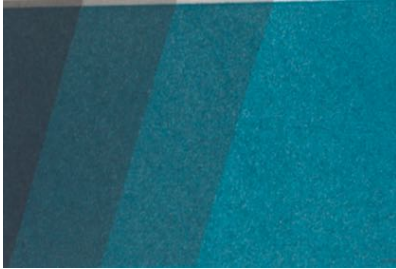
Kremer_OV_1_1_p1
23700, thioindigo red



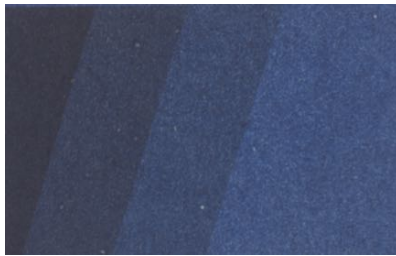
Kremer_OV_1_2_p1
23710, cinquasia® violet RT 201 D



Kremer_OV_1_3_p1
23750, alizarine violet



Kremer_OV_1_1_p2
23080, phthalo blue



Kremer_OV_1_2_p2
23100, indanthren® blue



Kremer_OV_1_3_p2
23451, dioxazine violet



Kremer_OV_1_1_p3
23050, phthalo blue

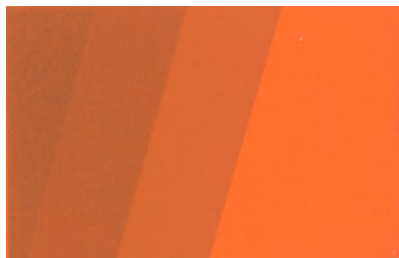


Kremer_OV_1_2_p3
23060, phthalo blue, royal blue

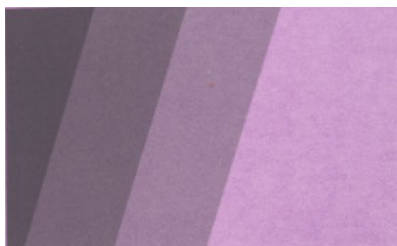


Kremer_OV_1_3_p3
23070, phthalo blue reddish

16 Red-2, Red Colors 2



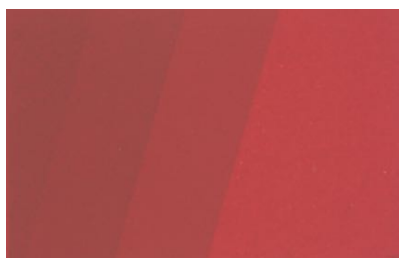
Kremer_RD_2_1_p1
42500, red lead, minium



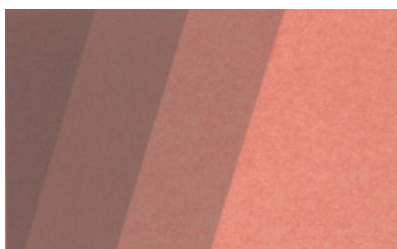
Kremer_RD_2_2_p1
42601, ultramarine red, violet pink



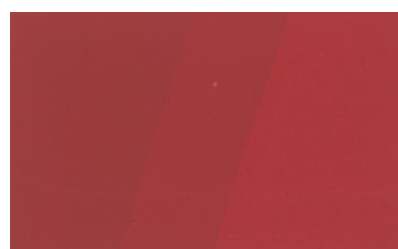
Kremer_RD_2_3_p1
42605, ultramarine red B, dark pink



Kremer_RD_2_1_p2
42000, vermillion



Kremer_RD_2_2_p2
42050, zirconium red



Kremer_RD_2_3_p2
42300, cerium red



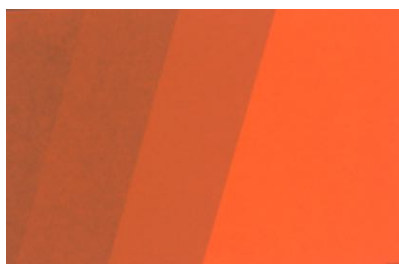
Kremer_RD_2_1_p3
21120, cadmium red no.1, light



Kremer_RD_2_2_p3
21130, cadmium red no.2, medium



Kremer_RD_2_3_p3
21140, cadmium red no.3, dark



Kremer_RD_2_1_p4
21090, cadmium orange no.0.5, light

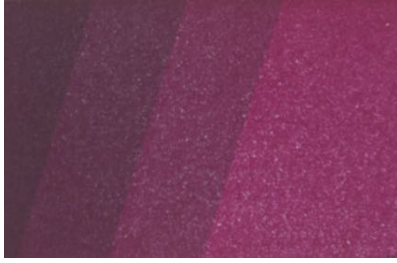


Kremer_RD_2_2_p4
21100, cadmium orange no.1, medium

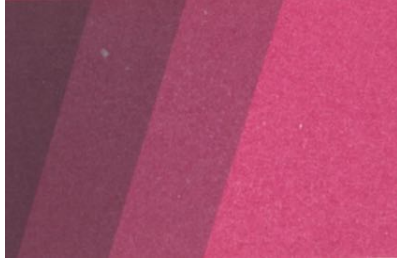


Kremer_RD_2_3_p4
21110, cadmium orange no.2, vermillion

17 Red-3, Red Colors 3



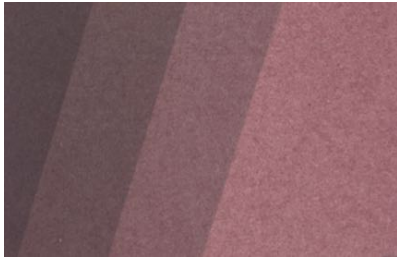
Kremer_RD_3_1_p1
23710, cinquasia® violet RT 201 D



Kremer_RD_3_2_p1
23720, hostaperm® red



Kremer_RD_3_3_p1
23950, studio red, helio



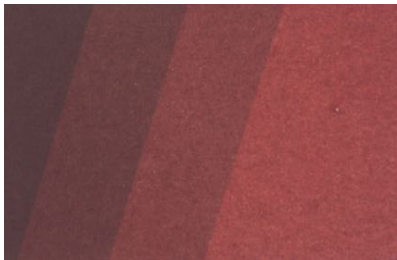
Kremer_RD_3_1_p2
23502, maroon



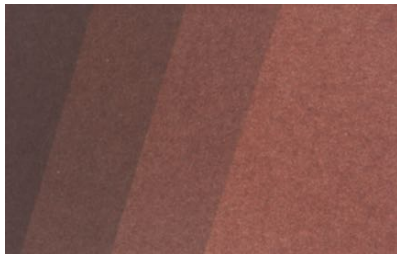
Kremer_RD_3_2_p2
23504, paliogen® maroon very fine



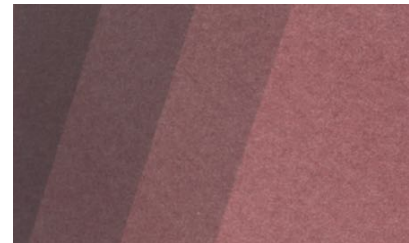
Kremer_RD_3_3_p2
23700, thioindigo red fine



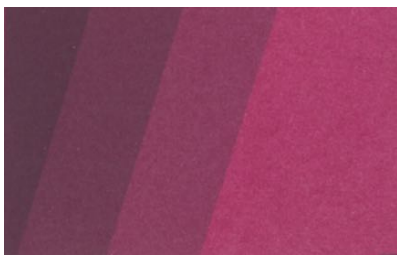
Kremer_RD_3_1_p3
23480, cinquasia® chestnut brown



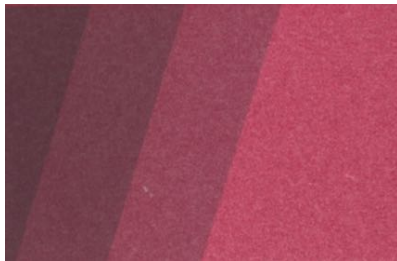
Kremer_RD_3_2_p3
23493, gubbio red



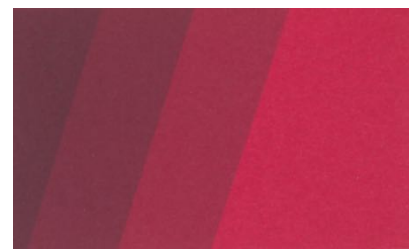
Kremer_RD_3_3_p3
23500, paliogen® maroon



Kremer_RD_3_1_p4
23153, hostaperm® pink E



Kremer_RD_3_2_p4
23230, permanent red A



Kremer_RD_3_3_p4
23402, quindo® pink D

18 Yellow-3, Yellow Colors 3



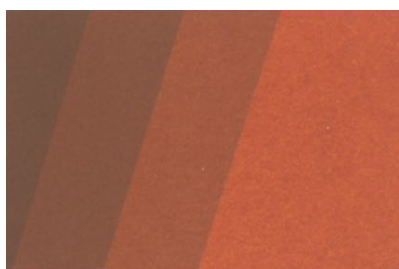
Kremer_YL_3_1_p1
43918, bismuth-vanadate yellow,
medium



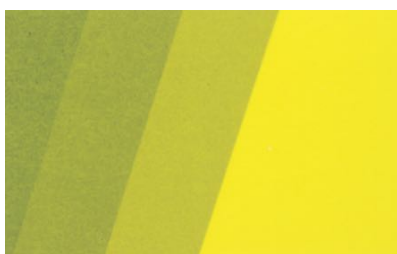
Kremer_YL_3_2_p1
43920, bismuth-vanadate yellow,
dark



Kremer_YL_3_3_p1
43915, bismuth-vanadate yellow,
light



Kremer_YL_3_1_p2
43600, antimony red



Kremer_YL_3_2_p2
43910, bismuth-vanadate yellow
lemon



Kremer_YL_3_3_p2
43500, cobalt yellow



Kremer_YL_3_1_p3
43130, naples yellow, reddish



Kremer_YL_3_2_p3
43131, bristol yellow, reddish



Kremer_YL_3_3_p3
43125, naples yellow, dark

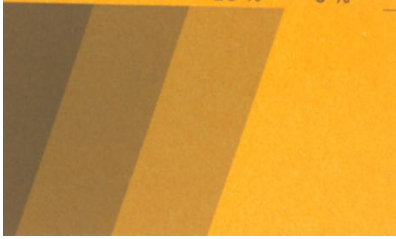


Kremer_YL_3_1_p4
43101, bristol yellow pale



Kremer_YL_3_2_p4
43111, bristol yellow, medium

19 Yellow-4, Yellow Colors 4



Kremer_YL_4_1_p1
24000, paliotol® yellow-orange



Kremer_YL_4_2_p1
43340, hokkaido-orange



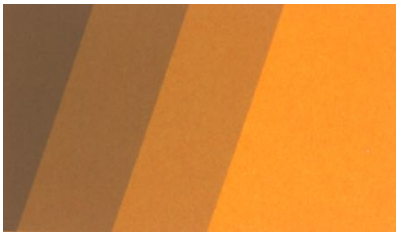
Kremer_YL_4_3_p1
55100, studio pigment yellow



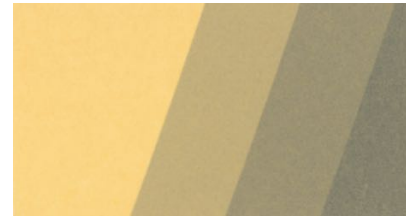
Kremer_YL_4_1_p2
23670, irgazin® yellow



Kremer_YL_4_3_p2
55125, studio pigment egg yolk
yellow



Kremer_YL_4_1_p3
23540, paliotol® orange



Kremer_YL_4_3_p3
55140, studio pigment yellow sun
gold