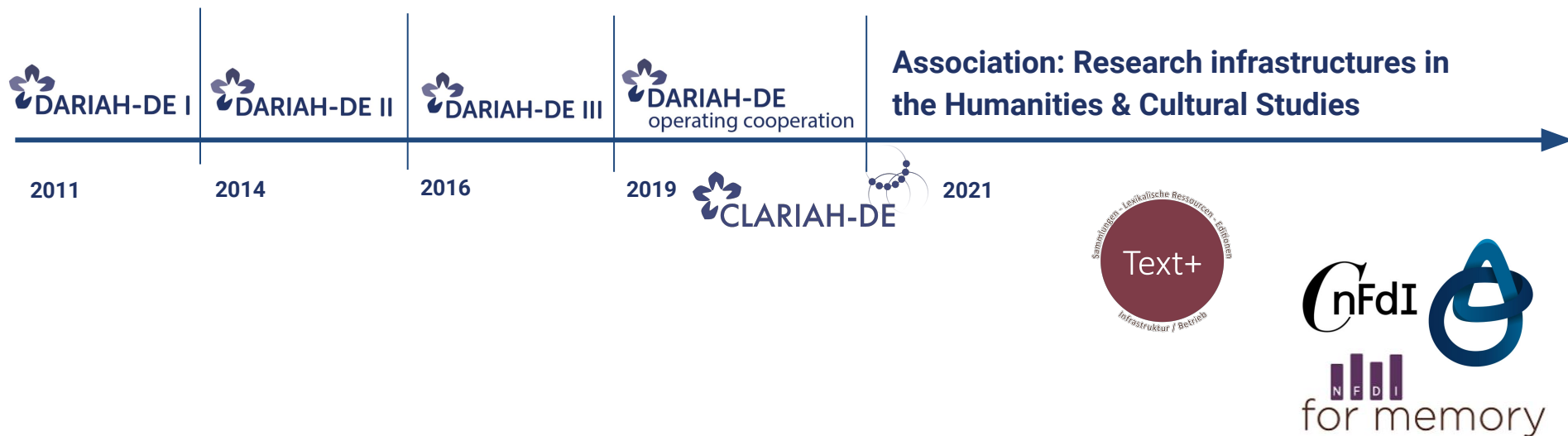


Highlights and Challenges: The Landscape of Services in DARIAH-DE and CLARIAH-DE

PD Dr. Nanette Reißler-Pipka, Göttingen State and University Library, rissler-pipka@sub.uni-goettingen.de

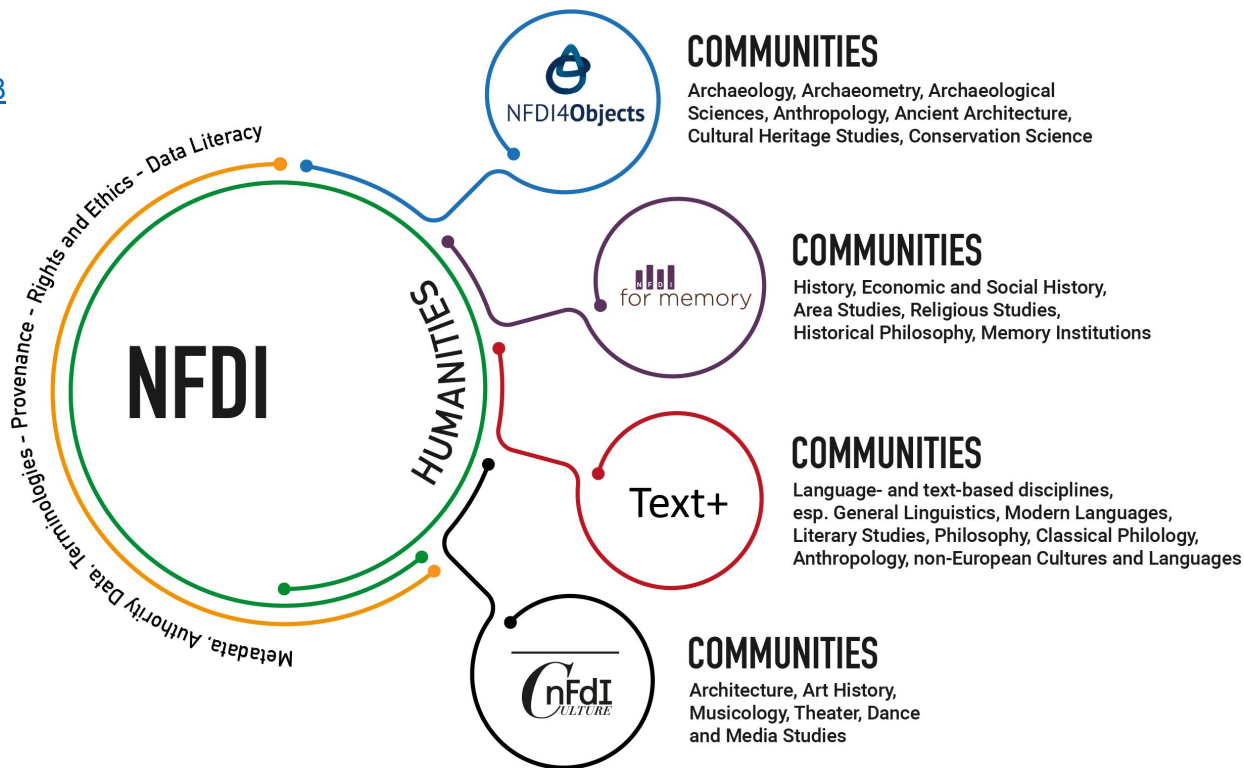
DARIAH-CZ National Workshop 2021, 21.10.21

DARIAH-DE: Its history and future



MoU in Humanities NFDI consortia

<https://doi.org/10.528>



Dynamic of the network



15 partners and 4 associate partners



16 partners and 5 Memorandum of Understanding partners



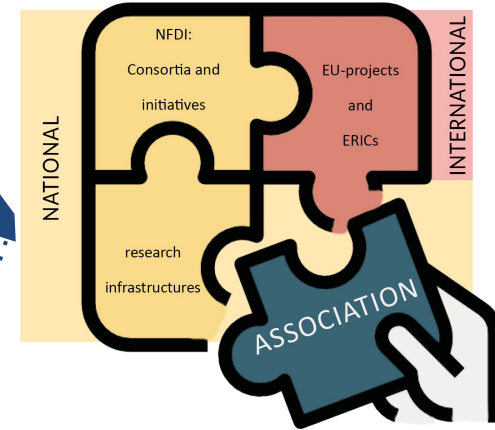
12 partners and 13 associate partners



29 actively participating institutions and many further partners, incl. 14 DARIAH-DE partners



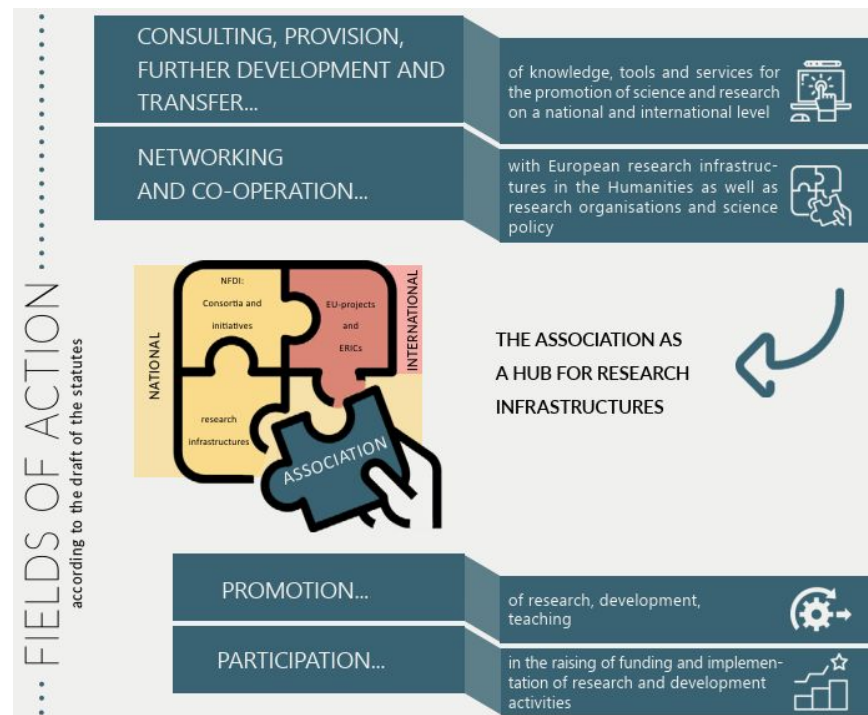
incl. 4 DARIAH-DE partners



Towards Sustainability?

Association: Research infrastructures in the Humanities & Cultural Studies

- Transformation of the existing **TextGrid** association (26 members) (<http://www.textgrid-verein.de/>)
- As an association, it is **not bound to project runtimes** or **project funding**.
- Members of the association offer their services and tools **voluntarily**.



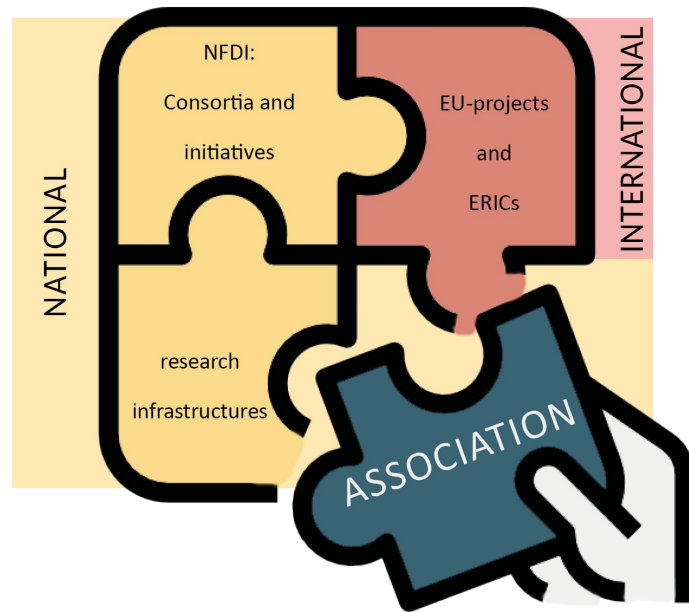
Membership

Eligibility of Full and Associate Members - no membership fee

ADVANTAGE	FULL MEMBER	ASSOCIATE MEMBER
Inclusion into a large community	yes	yes
Use and promotion of the offers and infrastructure	yes	yes
Inclusion of own offers	yes	no
Part of the plenary	yes	yes
Participation in working groups	yes	yes
Is electable for the executive board and coordinating council	yes	yes
Elects the executive board	yes	yes
Elects the coordinating council	yes	no

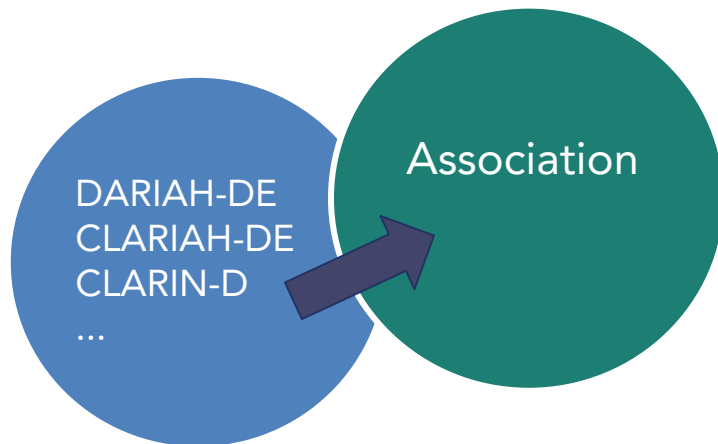
Impact on the in-kinds and the in-kind process

- The association serves as a **fixed point of contact** and is **permanently responsible** for the in-kinds.
- The in-kinds are offered by members of the association who make them available **independently of project funding** and run them on their **own initiative**.
- The association is **open for further in-kinds**, also beyond the limited scope of the DARIAH partners.



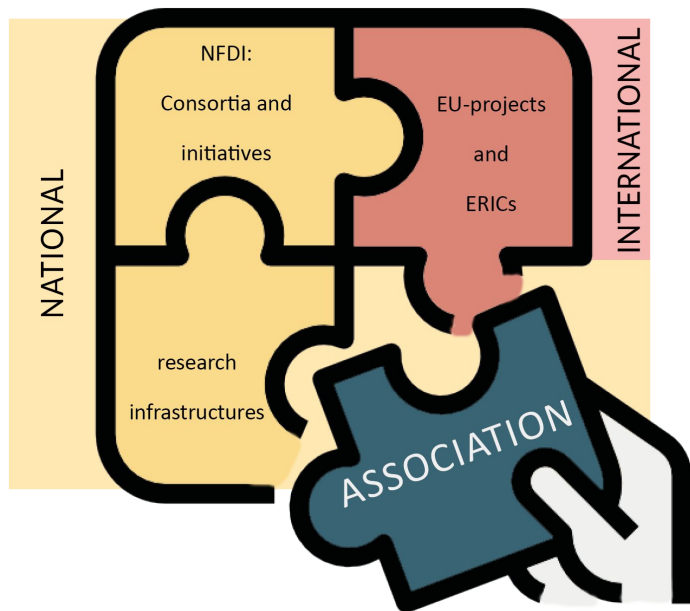
Impact on the in-kinds and the in-kind process

- in-kinds were / are **contractually bound**
→ dependent on project funding and run-time
- project partners were / are responsible for **delivering their in-kinds annually**
- in-kind contributions have a **monetary value** fixed to them



- **fixed point of contact**
→ **permanently responsible** for the in-kinds
- in-kinds are offered by members of the association → they make them available **independently of project funding** and run them on their **own initiative**
- **open to further in-kinds**, also beyond the scope of the DARIAH-DE partners

Integrating new partners

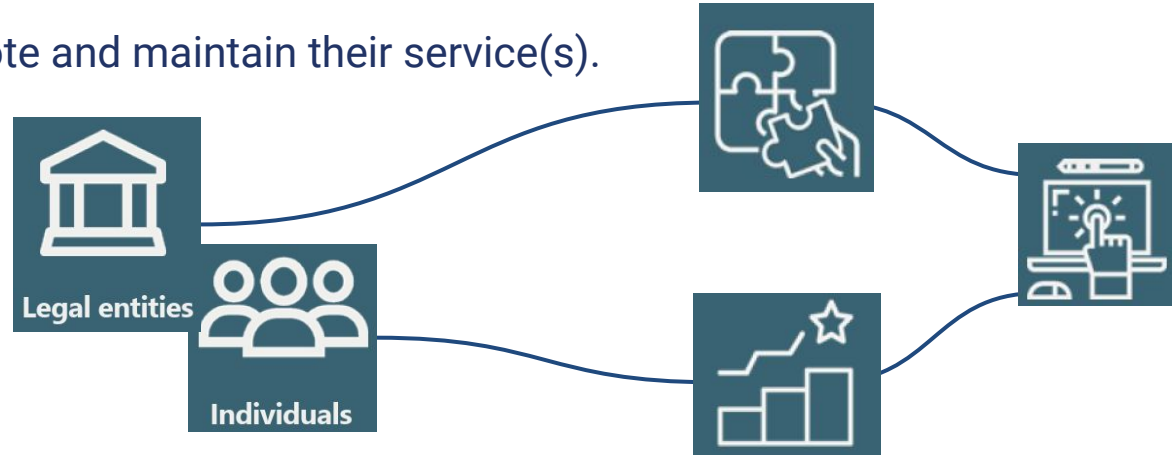


- The association is open to any members who want to
 - integrate and promote their **own services**,
 - take part in **working groups** (and thus, shape the landscape of infrastructures in the Humanities & Cultural Studies),
 - **be involved** in current developments,
 - etc.
- With their admission, members become part of a **comprehensive community**.
- This community supports **national and international cooperations** with established infrastructures (e.g., DARIAH and CLARIN).
- The association is **self-organised** and offers room for their members' **interactive participation**, e.g., in working groups.

Sustainability

Sustainability is ensured through the association's members:

→ Full members offer, promote and maintain their service(s).



⇒ Dependency between the members' engagement and the association's sustainability.

Service catalogue

- **Joint service catalogue** for all national nodes of ERICs represented by the association
- Definition of **criteria for** integration of **new services**
- Discussion of **Service Life Cycle**
- Decision regarding **core services** (offer on the European level)

Transformation process

- Integration of the **community and new partners**
- **Institutional membership** and commitment
- Possible activities for **individual researchers**
- Integration of all **NFDI consortia** in the Humanities (MoU)

Examples for Core Services

- DARIAH-DE Repository
 - allows for storing research data sustainably and securely, providing them with metadata, and finding them through the Repository Search as well as the DARIAH-DE Generic Search
- DARIAH AAI
 - enables authentication and authorisation via eduGAIN or DARIAH
- CLARIAH-DE Help Desk
 - provides assistance and advice on the CLARIAH-DE offers via a comprehensive network of experts
- TextGrid Repository
 - offers an extensive searchable and adaptable corpus of XML/TEI encoded texts
- TaDiRAH (Taxonomy of Digital Research Activities in the Humanities)
 - DH resources can be classified, annotated and structured

**DARIAH-DE**Digitale Forschungsinfrastruktur für die
Geistes- und Kulturwissenschaften

REPOSITORY SEARCH

The DARIAH-DE Repository is a central component of the DARIAH-DE research data federation architecture. It aggregates various services and applications which makes its use very convenient. The repository allows for storing research data sustainably and securely, providing them with metadata, and finding them through the generic search.

267 collections | 1 documents

 [Extended search](#)<https://repository.de.dariah.eu/search/>

Publish Data in the DARIAH-DE Repository



Help ▾

Repository Search



English



DARIAH ▾

DARIAH-DE Publikator

Welcome to the DARIAH-DE Publikator! With this interface you can upload and publish your research data into the DARIAH-DE Repository. To use this service you need to login with your DARIAH or DFN AAI account.

Documentation and User Guide

Please have a look at the [Documentation and User Guide](#).

Note: After the first login you are asked to give the permission for you user account for accessing the DARIAH-DE Storage. You have to allow the access in order to use this service.

→ Start with the DARIAH-DE Publikator

<https://repository.de.dariah.eu/publikator/>

[ABOUT](#)[NETWORK](#)

Federated Identity Management for DARIAH (FIM4D)



Login zu den DARIAH-Diensten

Für den Login über einen DARIAH-Account bitte hier klicken

[DARIAH >](#)

Oder Login über die Heimatinstitution **ohne** DARIAH-Account

Organisation

- ☒ Auswahl für die laufende Webbrowser Sitzung speichern.
- ☐ Auswahl permanent speichern und diesen Schritt von jetzt an überspringen.

[AUSWÄHLEN](#)

<https://de.dariah.eu/en/aai>

Helpdesk

Dear CLARIAH-DE User,

our helpdesk offers assistance and advice on the CLARIAH-DE offers via a comprehensive network of experts. We support you in your work with the services developed in CLARIAH-DE as well as the offers known from CLARIN-D and DARIAH-DE.

Please use our web form to contact us and write us your request. You will immediately receive an email confirming receipt and your enquiry will be forwarded to a contact person in CLARIAH-DE. If you do not receive a confirmation, please write an email to support@clariah.de.

Full name:

* Email:

* Subject:

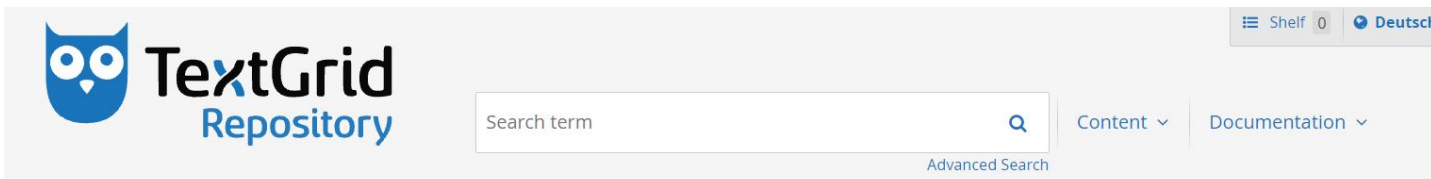
* Your message:

File attachment (optional) Keine ausgewählt

☐ I agree with the privacy policy



<https://www.clariah.de/en/support-helpdesk>



Mission Statement

Corpus and Digital Library of TextGrid

The TextGrid Repository offers an extensive searchable and adaptable corpus of XML/TEI encoded texts and images. Amongst the continuously growing corpus is the [Digital Library of TextGrid](#), which consists of works of more than 600 authors of German fiction (prose, verse and drama), as well as nonfiction from the beginning of the printing press to the early 20th century. The files are saved in different output formats (XML, ePub, PDF), published and made searchable. Different tools e.g. viewing or quantitative text-analysis tools can be used for visualization or to further research the text.

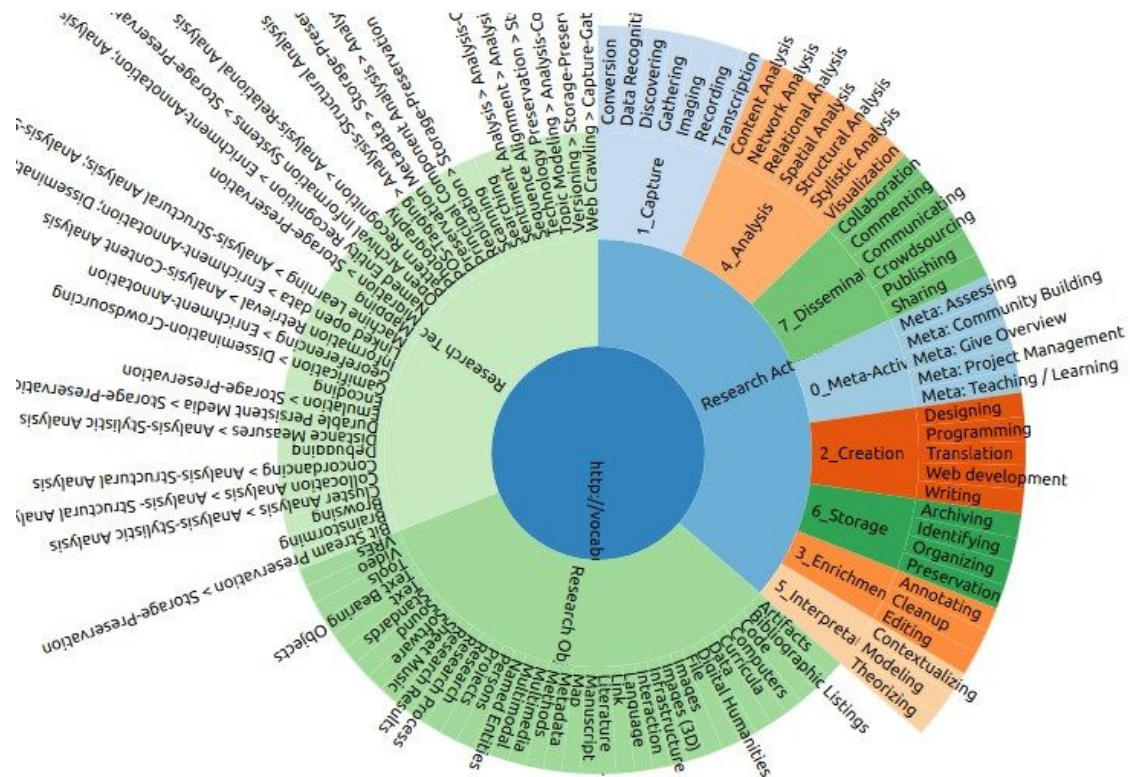
You can search within the corpus by entering a search term; alternatively “Explore” will lead you to predefined categories (e.g. “author”, “genre”).

The search function supports the query language [Lucene](#); in addition to the free text search it allows queries with the following pattern:

`edition.agent.value:goethe AND pudel`

More information on search syntax, search categories and filters are covered in the [Help](#) section.

<https://textgridrep.org/>



<https://de.dariah.eu/en/tadirah>

References

1. Blümm, Mirjam, Neuroth, Heike and Schmunk, Stefan. "DARIAH-DE – Architecture of Participation". Bibliothek Forschung und Praxis, vol. 40, no. 2, 2016, pp. 165-171. <https://doi.org/10.1515/bfp-2016-0026>
2. Buddenbohm, Stefan, Jander, Melina Leonie, Trippel, Thorsten, Weimer, Lukas, & Walker, Nathalie. (2021). "In-kind Contributions for two ERICs in one National Initiative: Practices and Experiences in CLARIAH-DE". Zenodo. <https://doi.org/10.5281/zenodo.5516817>
3. Buddenbohm, Stefan, Matoni, Markus, Schmunk, Stefan and Thiel, Carsten. "Quality Assessment for the Sustainable Provision of Software Components and Digital Research Infrastructures for the Arts and Humanities". Bibliothek Forschung und Praxis, vol. 41, no. 2, 2017, pp. 231-241. <https://doi.org/10.1515/bfp-2017-0024>
4. Eckart, Thomas, Gradl, Tobias, Jegan, Robin, Helfer, Felix, Margaretha, Eliza, Werthmann, Antonina, & Buddenbohm, Stefan. (2021). "CLARIAH-DE Cross-Service Search - Prospects and Benefits of Merging Subject-specific Services". DARIAH-DE Working Papers, 41, 29. <https://doi.org/10.5281/zenodo.4714894>
5. Matoni, Markus, Schmunk, Stefan, Thiel, Carsten. "Basic DARIAH Services and Demonstrators". [Other] Göttingen State and University Library; DARIAH. 2017. <hal-01574981>. <https://hal.archives-ouvertes.fr/hal-01574981>.
6. Reißler-Pipka, Nanette, Barthauer, Raisa, Buddenbohm, Stefan, Calvo Tello, José, Friedrichs, Sonja, & Weimer, Lukas. (2021). "Community Involvement in Research Infrastructures: The User Story Call for Text+ (1.0.0)". Zenodo. <https://doi.org/10.5281/zenodo.5384085>

<https://de.dariah.eu/en/tadiraH>

Thank you!

PD Dr. Nanette Reißler-Pipka, rissler-pipka@sub.uni-goettingen.de & Göttingen Team: Melina Jander, Stefan Buddenbohm, Lukas Weimer, Sonja Friedrichs

For further information visit:

<https://www.text-plus.org/>
<https://clariah.de>
<https://de.dariah.eu>

Contact us:

kontakt@forschungsinfrastrukturen.de
support@clariah.de
support@de.dariah.eu