

Description of a new catfish genus (Siluriformes, Loricariidae) from the Tocantins River basin in central Brazil, with comments on the historical zoogeography of the new taxon

Gabriel S. C. Silva¹, Fábio F. Roxo¹, Luz E. Ochoa¹, Claudio Oliveira¹

¹ *Laboratório de Biologia e Genética de Peixes, Departamento de Morfologia, IBB–UNESP, Campus de Botucatu, 18618–970, Botucatu, São Paulo state, Brazil*

Corresponding author: *Fábio F. Roxo* (roxoff@hotmail.com.br)

Academic editor: *N. Bogutskaya* | Received 5 December 2015 | Accepted 25 May 2016 | Published 14 June 2016

<http://zoobank.org/5331A38A-1FE8-460C-B4C2-49E9D7ECC3FA>

Citation: Silva GSC, Roxo FF, Luz E. Ochoa LE, Oliveira C (2016) Description of a new catfish genus (Siluriformes, Loricariidae) from the Tocantins River basin in central Brazil, with comments on the historical zoogeography of the new taxon. *ZooKeys* 598: 129–157. doi: 10.3897/zookeys.598.7400

Abstract

This study presents the description of a new genus of the catfish subfamily Neoplecostominae from the Tocantins River basin. It can be distinguished from other neoplecostomine genera by the presence of (1) three hypertrophied bicuspid odontodes on the lateral portion of the body (character apparently present in mature males); (2) a large area without odontodes around the snout; (3) a post-dorsal ridge on the caudal peduncle; (4) a straight tooth series in the dentary and premaxillary rows; (5) the absence of abdominal plates; (6) a conspicuous series of enlarged papillae just posterior to the dentary teeth; and (7) caudal peduncle ellipsoid in cross section. We used maximum likelihood and Bayesian methods to estimate a time-calibrated tree with the published data on 116 loricariid species using one nuclear and three mitochondrial genes, and we used parametric biogeographic analyses (DEC and DECj models) to estimate ancestral geographic ranges and to infer the colonization routes of the new genus and the other neoplecostomines in the Tocantins River and the hydrographic systems of southeastern Brazil. Our phylogenetic results indicate that the new genus and species is a sister taxon of all the other members of the Neoplecostominae, originating during the Eocene at 47.5 Mya (32.7–64.5 Mya 95% HPD). The present distribution of the new genus and other neoplecostomines may be the result of a historical connection between the drainage basins of the Paraguay and Paraná rivers and the Amazon basin, mainly through headwater captures.

Keywords

Molecular phylogeny, Freshwater fishes, headwater capture, catfish, taxonomy

Introduction

The Loricariidae, an endemic Neotropical family of freshwater fish, is the largest group of catfish, with about 900 valid species (Eschmeyer and Fong 2015). Within the Loricariidae, the subfamily Neoplecostominae has a long complex taxonomic and systematic history, with a number of major morphological and molecular studies being conducted since the nineteenth century (e.g. Eigenmann and Eigenmann 1890; Regan 1904; Gosline 1947; Isbrücker 1980; Howes 1983; Schaefer 1987; Montoya-Burgos et al. 1998; Armbruster 2004; Chiachio et al. 2008; Roxo et al. 2012a, 2014).

The neoplecostomines are small-bodied catfishes which were, until now, restricted to southern and southeastern Brazil, where they are found in small- to medium-sized streams with clear and shallow water, of up to 1 m in depth (Langeani 1990). Previous studies (e.g. Chiachio et al. 2008; Roxo et al. 2012a, 2014) concluded that the considerable diversity of this subfamily can be accounted for primarily by the geomorphological processes (i.e. tectonics and erosion) that have shaped the South American continent over the past 100 Mya, influencing fish distribution and speciation patterns (Ribeiro 2006; Albert and Reis 2011). In this context, one of the principal processes is river capture (also known as stream capture or headwater capture), an important landscape-level mechanism that can isolate lineages and promote diversification (Waters et al. 2006; Winemiller et al. 2008; Albert and Crampton 2010) by changing the connectivity of adjacent river basins (Smith 1981; Hocutt and Wiley 1986; Mayden 1988; Lundberg et al. 1998). The consequences of this process for the local fauna can be profound, changing watershed boundaries and allowing previously isolated species to disperse and colonize new environments (Grant et al. 2007; Muneeppeerakul et al. 2008; Bertuzzo et al. 2009).

Here, we recognize a new genus and species of neoplecostomine catfish based on specimens collected during a recent expedition to the Tocantins River basin in Goiás state, Brazil. The new taxon is described in detail below.

Material and methods**Morphological analysis**

Body plate nomenclature follows Schaefer (1997) and measurements, Armbruster (2003), except for the dorsal-adipose distance, adipose-spine length, dorsal adipose-caudal distance, ventral adipose-caudal distance, adipose-anal distance and mouth width. Measurements and counts were taken on the left side of the specimens and were taken point to point, to the nearest 0.1 mm with digital calipers. Specimens were

cleared and stained (c&s) according to the method of Taylor and Van Dyke (1985). Dorsal fin ray counts include the spinelet as the first unbranched ray. Counts of vertebrae include the five vertebrae that comprise the Weberian apparatus, while the compound caudal centrum (PU1 + U1) was counted as a single element. Zoological nomenclature follows the International Code of Zoological Nomenclature (International Commission on Zoological Nomenclature 1999).

Molecular analysis

Taxon sampling

The molecular analysis included 157 specimens representing 116 loricariid species (115 species from the study of Roxo et al. [2014], and one sample of the new genus, see Suppl. material 1 for all taxa). *Diplomystes mesembrinus* (Ringuelet, 1982) was used as the outgroup to root all phylogenies (Arratia 1987; de Pinna 1993, 1998; Grande 1987; Grande and de Pinna 1998; Mo 1991; Sullivan et al. 2006). Samples of *Corydoras imitator* Nijssen & Isbrücker, 1983, *Corydoras oiapoquensis* Nijssen, 1972, *Hoplosternum littorale* (Hancock, 1828), *Callichthys callichthys* (Linnaeus, 1758), *Astroblepus* spp. 1 and 2, *Hemipsilichthys gobio* (Lütken, 1874), *H. papillatus* Pereira, Oliveira & Oyakawa, 2000, *Delturus parahybae* Eigenmann & Eigenmann, 1889b, *Rineloricaria lanceolata* (Günther, 1868), *Spatuloricaria* sp. 1, *Hypostomus ancistroides* (Ihering, 1911), *H. nigromaculatus* (Schubart 1964) and *H. microstomus* Weber, 1987 were also included in the analysis as outgroups.

Vouchers of the samples were those catalogued by Roxo et al. (2014), except for the samples of the new genus, which was deposited in the collection of Auburn University Natural History Museum (AUM), Auburn; Laboratório de Biologia e Genética de Peixes (LBP), Botucatu; and Museu de Zoologia da Universidade de São Paulo (MZUSP), São Paulo.

DNA extraction and sequencing

Total DNA was extracted from muscle samples collected from two specimens of the new genus preserved in ethanol using the protocol described by Aljanabi and Martinez (1997). Partial sequences for two genes, Cytochrome B (CytB), forward 5'-CCA TCC AAC ATC TCA GCA TGA TGA AA 3', reverse 5'-AAC CTC CGA TCT TCG GAT TAC AAG AC 3' (Oliveira et al. 2011), and 16S rRNA, forward 5'-ACG CCT GTT TAT CAA AAA CAT-3', reverse 5'-CCG GTC TGA ACT CAG ATC ACG T-3' (Kocher et al. 1989) were amplified by polymerase chain reaction (PCR). The amplification was conducted in a total volume of 12.5 µl with 1.25 µl of 10 X buffer (10 mM Tris-HCl+15 mM MgCl₂), 0.5 µl of the dNTPs (200 nM of each), 0.5 µl of each 5 mM primer, 0.05 µl of platinum Taq polymerase (Invitrogen), 1 µl of template

DNA (12 ng), and 8.7 μ l of dd H₂O. The PCR reactions consisted of 30–40 cycles, 30 s at 95 °C, 15–30 s at 48–58 °C, and 45–90 s at 72 °C. All the PCR products were first identified visually on a 1% agarose gel and then purified using ExoSap-IT (USB Corporation) following the manufacturer's instructions. The purified PCR products were sequenced using the Big Dye™ Terminator v 3.1 Cycle Sequencing Ready Reaction kit (Applied Biosystems), purified by ethanol precipitation and loaded into a 3130-Genetic Analyzer automatic sequencer (Applied Biosystems).

Sequencing and phylogenetic analysis

The individual sequences of each species were initially analyzed in the BioEdit 5.0.9 software (Hall 1999), and a consensus sequence was obtained for each DNA segment. The sequences were then aligned in MUSCLE (Edgar 2004) using the default parameters, and inspected visually. To evaluate the saturation of the matrix by substitution, we calculated the index of substitution saturation (Iss), as described by Xia et al. (2003) and Xia and Lemey (2009), and the transition/transversion rate, in DAMBE 5.2.31 (Xia and Xie 2001). The Iss was calculated without taking gaps into account.

Maximum likelihood analyses were run in RAxML Web-Servers (Stamatakis et al. 2008). Bootstrap (BS) resampling (Felsenstein 1985) was used to evaluate the support for each node, based on 1000 replicates. Random starting trees were used for each independent ML tree search, while all other parameters were set at the default values. The ML analyses were based on the GTR model.

Time calibration and estimates of ancestral ranges

The uncorrelated relaxed (lognormal) molecular clock was calibrated using BEAST v.1.7.5. All clade-age estimates are presented as the mean and 95% highest posterior density (HPD) values. We included two calibration points to constrain the divergence dates for the 157 clades identified in our phylogenetic tree. The first calibration point was implemented as a normally-distributed prior, with an offset of 125 million years ago (Mya), and a standard deviation of 15 million years. Data from the stratigraphic record and the geographic distribution of living taxa indicate that the Siluriformes originated during the Lower Cretaceous (145–100 Mya; Lundberg 1993; Sullivan et al. 2006; Lundberg et al. 2007).

The second calibration point was implemented using a log-normal prior set at 55 Mya, with a mean and standard deviation of 1 for the origin of the family Callichthyidae. The oldest known callichthyid fossil, *Corydoras revelatus* Cockerell (1925) was dated to the Paleocene by Marshall et al. (1997), assuming 55 Mya as a minimum age. We used a macroevolutionary Birth–Death model to estimate diversification likelihood values, with a starting tree obtained from the RAxML analysis. These analyses were conducted under the GTR model. The ML tree obtained in this analysis was used as a starting tree for the MCMC searches. This analysis was run for 100 million generations and sampled every

10,000th generation. Stationarity and the sufficient mixing of parameters (ESS>200) were verified using Tracer v1.5 (Rambaut and Drummond 2007a). A consensus tree was built in TreeAnnotator v1.7.5 (Rambaut and Drummond 2007b).

Data on the geographic distribution of the species in each of the three subfamilies analyzed here (Hypoptopomatinae, Neoplecostominae and Otothyriinae) were obtained from the original species descriptions and the catalog of Eschmeyer (2015), with the species classification following Roxo et al. (2014). Species ranges are located within five biogeographic regions: A, Drainage basins of the Atlantic coast of southeastern Brazil; B, Upper Paraná basin; C, Paraguay, Lower Paraná and Uruguay basins; D, Amazon and Orinoco basins; E, São Francisco basin and the coastal drainage basins of northeastern Brazil.

We estimated the likelihood of ancestral range evolution using the Dispersal-Extinction-Cladogenesis (DEC: Ree and Smith 2008) and jumping (DECj: Matzke 2013a) models of species range evolution. These models are composed of two (DEC) or three (DECj) parameters including: 1) dispersal (D), where ancestral ranges expand by adding new geographic units, 2) extinction (E), where ancestral ranges are reduced by extirpating geographic units, and 3) jumping events (j), where j specifies the weight of the jumping events beyond an ancestral range (Matzke 2014). The two models of range evolution (i.e. DEC and DECj) were implemented in the R package BioGeoBEARS (Matzke 2013b). The global likelihood of the six biogeographic scenarios found using the two models (i.e. DEC and DEC+J models) were compared using the Akaike Information Criterion (AIC) (Akaike 1973) (Suppl. material 2). The model that obtained the lowest AIC values was model 2 with the DEC+J model (M2 – DEC + J), which constrained the dispersal rates between adjacent areas at 1.0 and areas separated by one or more intercalated areas at 0.5.

Results

Microplecostomus gen. n.

<http://zoobank.org/077BD513-6BF2-47D9-AB4C-4A496FE33115>

Figs 1, 6

Type species. *Microplecostomus forestii* sp. n.

Diagnosis. The new genus and species differs from all members of the Loricariidae by having (1) three hypertrophied bicuspid odontodes on the lateral portion of the body (character apparently present only in mature males – observed in the holotype, but not present in the paratypes) (Fig. 2a, b); and differs from all members of the Neoplecostominae by having (2) a large area without odontodes around the snout, observed in all specimens, Fig. 3 (*vs.* margin of snout bearing odontodes); and from all members of the Neoplecostominae, except *Hirtella carinata* Pereira, Zanata, Cetra & Reis, 2014, *Pareiorhina carrancas* Bockmann & Ribeiro, 2003 and *Pareiorhina hypthorhachis* Silva, Roxo & Oliveira, 2013 by (3) the presence of a post-dorsal ridge on



Figure 1. *Microplecostomus forestii* sp. n., MZUSP 118673, holotype, male, 38.3 mm SL, Goiás state, Brazil, Tocantins River basin.

the caudal peduncle, see dorsal view of holotype in Figs 1, 4 (*vs.* the absence of a post-dorsal ridge). *Microplecostomus forestii* sp. n. differs from species of the genera *Isbrueckerichthys*, *Neoplecostomus* and *Pseudotocinclus* by (4) the absence of abdominal plates, Fig. 1 (*vs.* abdomen covered by pentagonal or hexagonal platelets); from *Kronichthys* by having (5) the tooth series in dentary and premaxillary rows straight (*vs.* tooth series strongly curved medially); from *Neoplecostomus* by (6) the absence of a conspicuous

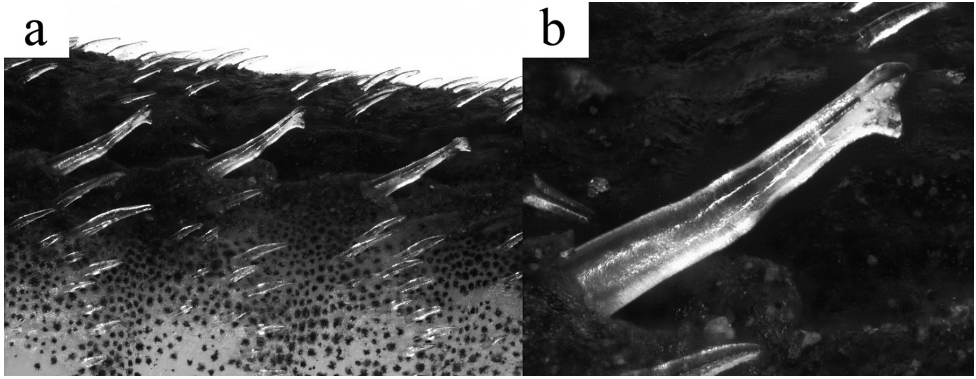


Figure 2. Photographs showing **a** the three hypertrophied bicuspid odontodes on the lateral portion of the body of the holotype of *Microplecostomus forestii* sp. n., MZUSP 118673; **b** Detail of the hypertrophied bicuspid odontodes.

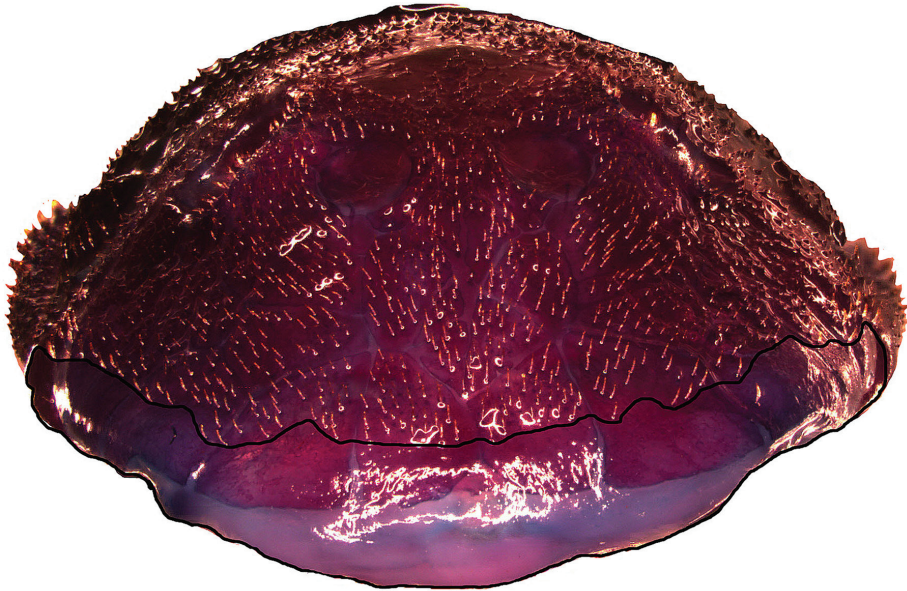


Figure 3. *Microplecostomus forestii* sp. n. showing a large area without odontodes around the snout, LBP 19017, 29.0 mm SL.

series of enlarged papillae just posterior to the dentary teeth (*vs.* presence of enlarged papillae); and from *Pseudotocinclus* by having (7) the caudal peduncle ellipsoid in cross section (*vs.* caudal peduncle square in cross-section).

Etymology. The generic name is a combination of Greek, *micro* (mikrós) = small, related to the small size of the adult type-specimen, and *plecostomus* = a former generic name of species currently included in Loricariidae, also in reference to the small adult size of the type-species. A masculine name.

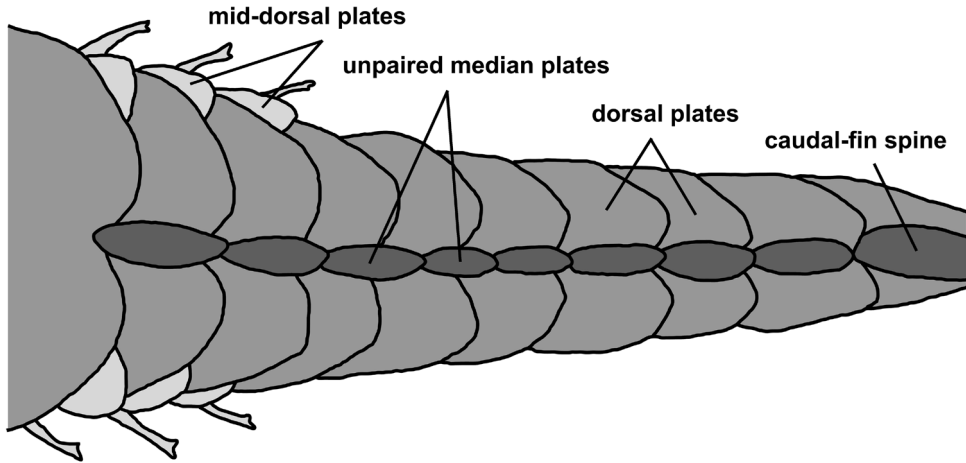


Figure 4. Dorsal view of the caudal peduncle in *Microplecostomus forestii* sp. n., LBP 19017, 29.0 mm SL, showing the presence of a series of unpaired median plates that form a post-dorsal ridge.

***Microplecostomus forestii* sp. n.**

<http://zoobank.org/2A1A0D93-ED90-4C5F-9562-D3209D951630>

Figs 1, 6; Table 1

Holotype. MZUSP 118673 (adult male, 38.3 mm SL), Brazil, Goiás state, municipality of São João D’Aliança, Roncador Stream, a tributary of das Brancas Stream, tributary of the Tocantizinho River, Tocantins River basin, 14°53’47.2”S, 47°34’58.4”W, 9 November 2014, FF Roxo, GSC Silva, LEO Ochoa, LH Roxo.

Paratypes. All from Brazil, Goiás state, Tocantins River basin (15 specimens). AUM 67015, 1, 29.4 mm SL, municipality of Água Fria de Goiás, córrego das Brancas, tributary of rio Tocantizinho, 14°53’47.2”S, 47°34’58.4”W, 9 November 2014, FF Roxo, GSC Silva, LEO Ochoa, LH Roxo. LBP 17318, 2, 24.2–30.3 mm SL, municipality of São João D’Aliança, Roncador Stream, a tributary of das Brancas Stream, 14°43’51.3”S, 47°32’34.0”W, 21 November 2012, BF Melo, GSC Silva, JHM Martinez, R Devidé. LBP 19000, 2, 29.8–32.2 mm SL, collected with the holotype. LBP 19017, 1, 24.8 mm SL, 1 c&s 29.0 mm SL, municipality of Água Fria de Goiás, das Brancas Stream, a tributary of the Tocantizinho River, 14°53’47.2”S, 47°34’58.4”W, 30 June 2014, FF Roxo, GSC Silva, LE Ochoa. LBP 19319, 3, 24.4–28.4 mm SL, municipality of Água Fria de Goiás, das Brancas Stream, tributary of the Tocantizinho River, 14°53’47.2”S, 47°34’58.4”W, 16 August 2014, BF Melo, C Oliveira, GSC Silva, MI Taylor. LBP 19467, 2, 27.6–28.4 mm SL, municipality of Água Fria de Goiás, das Brancas Stream, a tributary of the Tocantizinho River, 14°53’47.2”S, 47°34’58.4”W, 9 November 2014, FF Roxo, GSC Silva, LEO Ochoa, LH Roxo. LBP 19468, 1, 27.7 mm SL, municipality of São João D’Aliança, Roncador Stream, a tributary of das Brancas Stream, 14°43’51.3”S, 47°32’34.0”W, 9 November 2014, FF Roxo, GSC Silva, LE Ochoa, LH Roxo. MZUSP 113919, 2, 21.7–25.0 mm SL, municipality of Água Fria

de Goiás, das Brancas Stream, a tributary of the Tocantinzinho River, 14°53'47.2"S, 47°34'58.4"W, 27 November 2012, AM Zanata, P Camelier, M Melo, OT Oyakawa.

Diagnosis. Same as for the genus.

Description. Morphometric and meristic data in Table 1. In lateral view, dorsal profile of head strongly convex from snout tip to distal margin of supraoccipital; straight from supraoccipital to dorsal-fin origin; concave and slightly decreasing to end of caudal peduncle. Ventral surface of body, slightly concave at head, straight to convex from posterior end of head to pelvic-fin insertion, and straight but angled to posterior caudal peduncle. Snout tip rounded in dorsal view. Nostril small. Trunk and caudal peduncle rectangular in cross-section. Greatest body depth at dorsal-fin origin. Body progressively narrowing posteriorly from cleithrum to caudal peduncle. Head flat to slightly convex between orbits; superior margin of orbits elevated. Head lacking crests. Head and body plates covered with minute, uniformly sized and evenly distributed odontodes. Head with large area without odontodes around snout. Eye small, situated dorsolaterally just posterior of midpoint.

Tip of snout formed by two triangle rostral plates, without odontodes. Nasal plates almost rectangular forming medial nostril margin and contacting pre-nasals anteriorly. Nasal plates posteriorly contacting frontal bones. Lateral margin of head formed by four or five postrostral plates. Complete infraorbital plate series composed of five plates; all infraorbital plates containing latero-sensory canals; first and second infraorbitals largest and third, fourth and fifth smallest. Preopercle elongate, bearing a branch of laterosensory canal. Subocular cheek plates present ventral to preopercle plate. Top of head composed of compound pterotic, supraoccipital, prefrontal, frontal, and sphenotic (Fig. 5); compound pterotic as with fenestrae irregularly distributed and with different sizes and shapes. Anterior margin of mesethmoid pointed and projected anteriorly to condyle.

Lateral ethmoid exposed without odontodes in dorsal view. Lateral ethmoid strut short and broad, nasal capsule partially closed, lateral ethmoid surrounding more than 50% of nasal capsule. Compound pterotic roughly quadrangular, without posterior process, with several fenestrae non-uniform in shape and size. Parieto-supraoccipital not contributing to dorsal portion of swimbladder capsule. Metapterygoid channel present. Hyomandibular square and not sutured to compound pterotic, hyomandibular adductor palatine crest present. Quadrangle triangle. Lips large; oral disk rounded and papillose. Premaxillary teeth 44–65 (mode 46). Dentary teeth 45–69 (mode 48). Teeth bicuspid. Maxillar barbel short. Upper pharyngeal tooth-plate small and triangular. Five ceratobranchials with accessory process present and long. Five teeth in ceratobranchial. Four branchiostegal rays.

Dorsal-fin rays II,7; dorsal-fin originating at vertical through posterior end of pelvic-fin base; distal margin slightly convex; dorsal-fin spinelet short and oval in shape. Pectoral-fin rays I,6; distal margin slightly convex; unbranched pectoral-fin ray reaching pelvic-fin origin; unbranched pectoral-fin ray covered with large and pointed odontodes. Pectoral girdle not exposed ventrally. Arrector fossae, partially enclosed by ventral lamina of coracoids, opening relatively large, extending laterally towards base

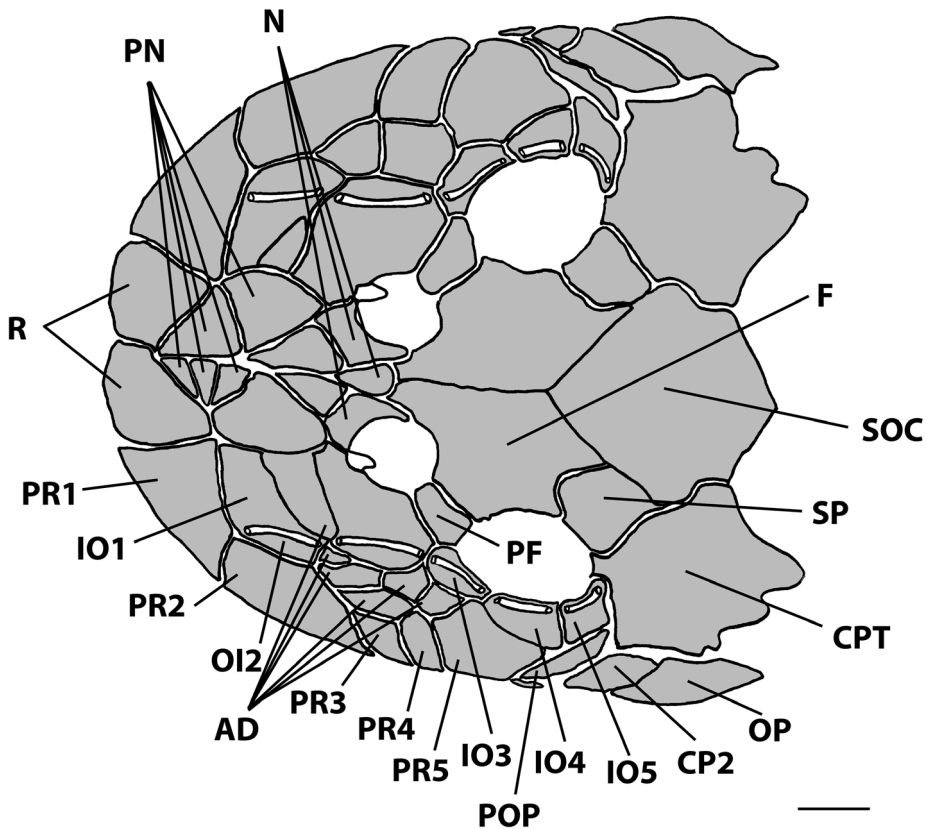


Figure 5. Dorsal view of the head plates in *Microplecostomus forestii* sp. n., LBP 19017, 29.0 mm SL. CPT = compound pterotic; F = frontal; IO1-5 = infraorbitals; N = nasal; OP = opercle; PR1-4 postrostral plates; PF = prefrontal; PN = prenasal; POP = preopercle; R = rostral plate; SP = sphenotic; CP2 = subocular cheek plate; SOC = parieto-supraoccipital; AD = additional plates.

of pectoral fin. Pelvic-fin rays I,5; distal margin of fin slightly convex; tip of adpressed pelvic-fin almost reaching anal-fin origin; unbranched pelvic-fin ray covered with conspicuously pointed, and uniformly distributed odontodes, larger at ventral portion. Pelvic girdle with slender lateropterigium. Basipterygium lacking anterior fenestrae. Anal-fin rays I,5; distal margin slightly convex. Adipose-fin absent. Caudal-fin rays I,7-7,I, truncated with ventral unbranched principal ray longer than dorsal ray.

Compound hypurals 1 and 2 almost completely fused to compound hypurals 3-5, and lower and upper halves fused to last vertebra. Upper and lower lobes of hypural plates of same length. Epural present and separated from hypural plate. Body entirely covered by bony plates, except for ventral surface of head, abdomen and region between compound pterotic and first medial plate. Dorsal series of plates 22-23, mid-dorsal 4-7, median perforated plates 22-23, mid-ventral 11, and ventral 18-20. Trunk with conspicuous, elongated, post-dorsal ridge formed by 14-15 raised, unpaired, median



Figure 6. *Microplecostomus forestii* sp. n., live specimen, LBP 19319, paratype, 28.4 mm SL, Tocantins River, Goiás state, Brazil. Photograph: MI Taylor.

Table 1. Morphometric data for *Microplecostomus forestii* sp. n. SD = standard deviation.

	<i>Microplecostomus forestii</i> sp. n., 15 paratypes and the holotype			
	Holotype	Range	Mean	SD
SL	38.3	21.7–38.3	27.9	–
Percentage of SL				
Predorsal length	45.5	44.5–50.8	47.9	1.8
Head length	34.9	34.5–39.9	37.4	1.5
Head-dorsal length	12.5	10.0–13.5	11.4	1.1
Cleithral width	32.5	31.2–35.2	33.3	1.0
Head-pectoral length	29.7	22.4–32.7	30.1	2.4
Thorax length	19.1	17.1–20.5	19.1	1.0
Pectoral-spine length	19.9	19.2–25.3	21.4	1.7
Abdominal length	21.8	19.4–24.3	21.8	1.2
Pelvic-spine length	20.8	17.0–22.3	20.3	1.6
Post-anal length	34.2	31.8–34.9	33.2	0.9
Anal-fin spine length	12.2	10.6–13.6	12.1	0.8
Dorsal-pectoral distance	25.7	25.3–34.5	28.1	2.2
Dorsal spine length	19.4	18.2–23.0	20.9	1.4
Dorsal-pelvic distance	20.2	16.8–22.3	20.1	1.6
Dorsal-fin base length	18.5	15.1–19.4	17.6	1.2
Caudal peduncle depth	9.5	8.1–10.5	9.6	0.6
Dorsal-anal distance	13.6	13.6–16.8	15.0	1.0
Pelvic-dorsal distance	22.5	20.3–25.7	23.2	1.6
Percentage of HL				
Head-eye length	32.3	30.9–36.7	33.9	1.9
Orbital diameter	15.8	13.2–17.2	15.1	1.2
Snout length	61.8	52.9–61.8	57.8	2.8
Internares width	17.0	14.8–19.2	16.7	1.2
Interorbital width	31.5	28.8–34.3	32.1	1.5
Head depth	58.8	55.8–66.6	61.1	2.6
Mouth length	55.8	45.6–66.9	58.7	5.8
Barbel length	4.8	1.2–5.5	3.2	1.2
Dentary tooth cup length	24.2	20.1–27.0	23.3	1.6
Premaxillary tooth cup length	21.7	18.3–25.2	23.3	1.8

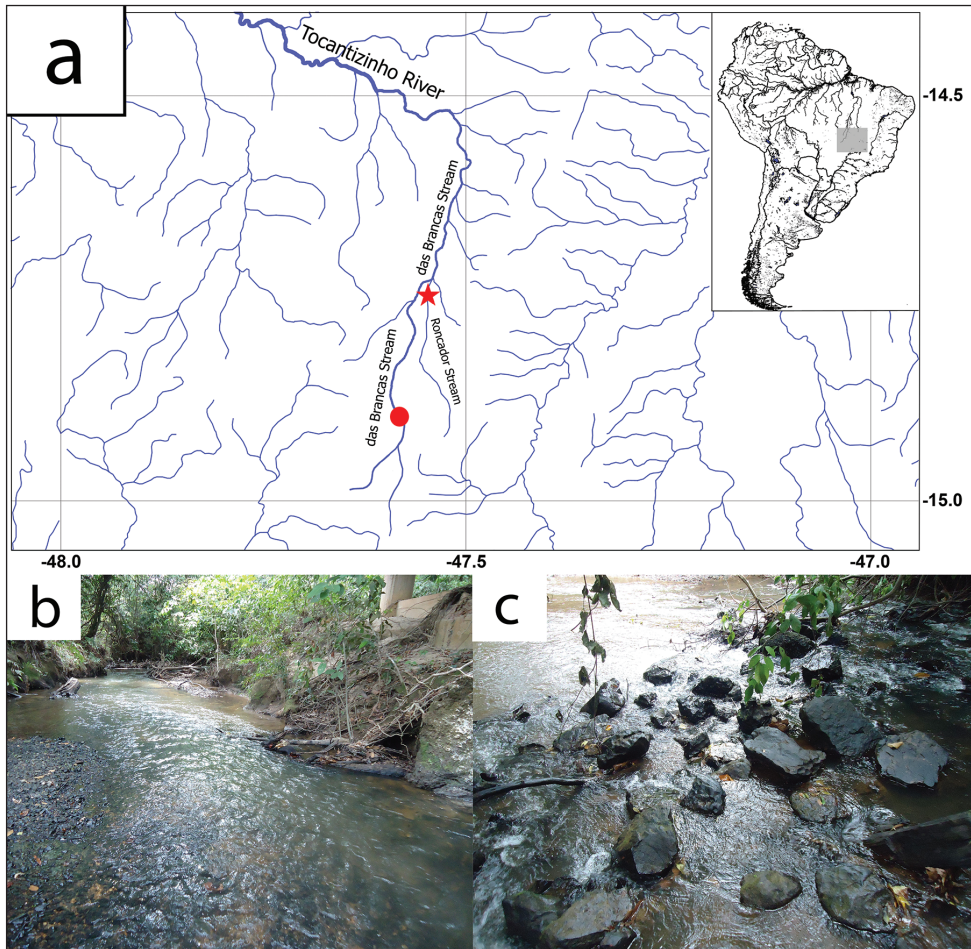


Figure 7. **a** Map showing the distribution of *Microplecostomus forestii* sp. n. Type locality at Roncador Stream, red star – $14^{\circ}43'51.3''\text{S}$, $47^{\circ}32'34.0''\text{W}$. Paratype locality at das Brancas Stream, red circle – $14^{\circ}53'47.2''\text{S}$, $47^{\circ}34'58.4''\text{W}$. Habitat where *Microplecostomus forestii* sp. n. is found at **b** Roncador Stream and **c** das Brancas Stream. These are small size streams with a depth of less than 1 m, clear water, the bottom covered with loose stones and shaded margins. Photographs: LH Roxo.

plates; ridge continuous posteriorly with procurrent caudal-fin rays. Six pairs of ribs associated with vertebrae 7–13. Ribs slender and poorly ossified. Total vertebrae 27.

Color in life. Background color of dorsal and ventral surfaces of body yellowish tan. Dorsal surface of head dark brown. Four dark brown saddles on dorsal surface of trunk, most anterior inconspicuous and below dorsal-fin origin, second below end of dorsal-fin, third typically in adipose-fin region, and fourth at end of caudal peduncle. Lateral portion of body with inconspicuous dark stripe from head to caudal fin. Pectoral, pelvic and dorsal fins with three irregular, poorly defined bands. Caudal fin with variegated blotches (Fig. 6).

Color in alcohol. Similar to pattern described for living individuals, but with darker brown color, and darker saddles and stripes (Fig. 1).

Sexual dimorphism. Specimens lacking main sexual dimorphic characters usually present in loricariid species, particularly in Neoplecostominae members, such as (1) a papilla present posteriorly to urogenital opening; (2) an expanded flap skin on dorsal surface of first pelvic-fin ray; and (3) a larger pelvic-fin and body size (all characters present in males), but absent in females. Three hypertrophied bicuspid odontodes are present on lateral portion of body (a characteristic that may be related to mature males), however it is only present in holotype.

Etymology. The specific name, *forestii*, is given in honor of Fausto Foresti, Professor of the university of São Paulo state “Júlio de Mesquita Filho” (Unesp) in Brazil, for his contributions to fish genetics, with more than 250 papers published in this field.

Distribution. *Microplecostomus forestii* sp. n. is known from two localities, the Roncador Stream and the das Brancas Stream, both tributaries of the Tocantinzinho River, in the Tocantins basin (Fig. 7a).

Habitat. *Microplecostomus forestii* sp. n. was collected in shallow, clear waters of about 0.5 m in depth and fast-flowing currents, with an underlying substrate of rock, in areas of flat terrain. The fishes captured were associated with pebbles (Fig. 7b, c). This species is relatively hard to collect and is not abundant. In seven expeditions to the Roncador and das Brancas streams in different periods of the year, we were able to collect only 16 specimens. *Microplecostomus forestii* sp. n. is sympatric with species such as *Creagrutus* sp., *Rhinolekos capetinga* Roxo, Ochoa, Silva & Oliveira, 2015, *Hypostomus* sp., *Phenacorhamdia* sp., *Ancistrus* sp., and *Ituglanis* sp.

Sequencing and phylogenetic analysis

The sequences of all 157 specimens are shown in Suppl. material 1 (the same list of species presented by Roxo et al. 2014, but with the inclusion of the voucher and GenBank accession numbers for the specimens of the newly described genus). The concatenated dataset resulted in a matrix of 4,102 base pairs (bps), used in all the phylogenetic and biogeographic analyses, of which 1,361 bps were conserved and 2,657 bps were variable. There was no evidence of saturation in these data, considering that the Iss.c value is higher than the Iss, and the R^2 value is higher than 0.8 for transitions and transversions, for the concatenated matrix.

Our results are very similar to those of Roxo et al. (2014), in particular, that the Hypoptopomatinae, Neoplecostominae and Otothyriinae clades are monophyletic (Figs 8–9) with strong statistical support (BS = 99 for Hypoptopomatinae; BS = 80 for Neoplecostominae; BS = 84 for Otothyriinae), that the Neoplecostominae is more closely related to the Otothyriinae than to the Hypoptopomatinae (BS = 95), and that these two clades together form the sister group of the Hypoptopomatinae (BS = 96). The new genus *Microplecostomus forestii* sp. n. was placed in the subfamily Neoplecostominae (Fig. 8), forming a sister group with all its members, with strong statistical support (BS = 80).

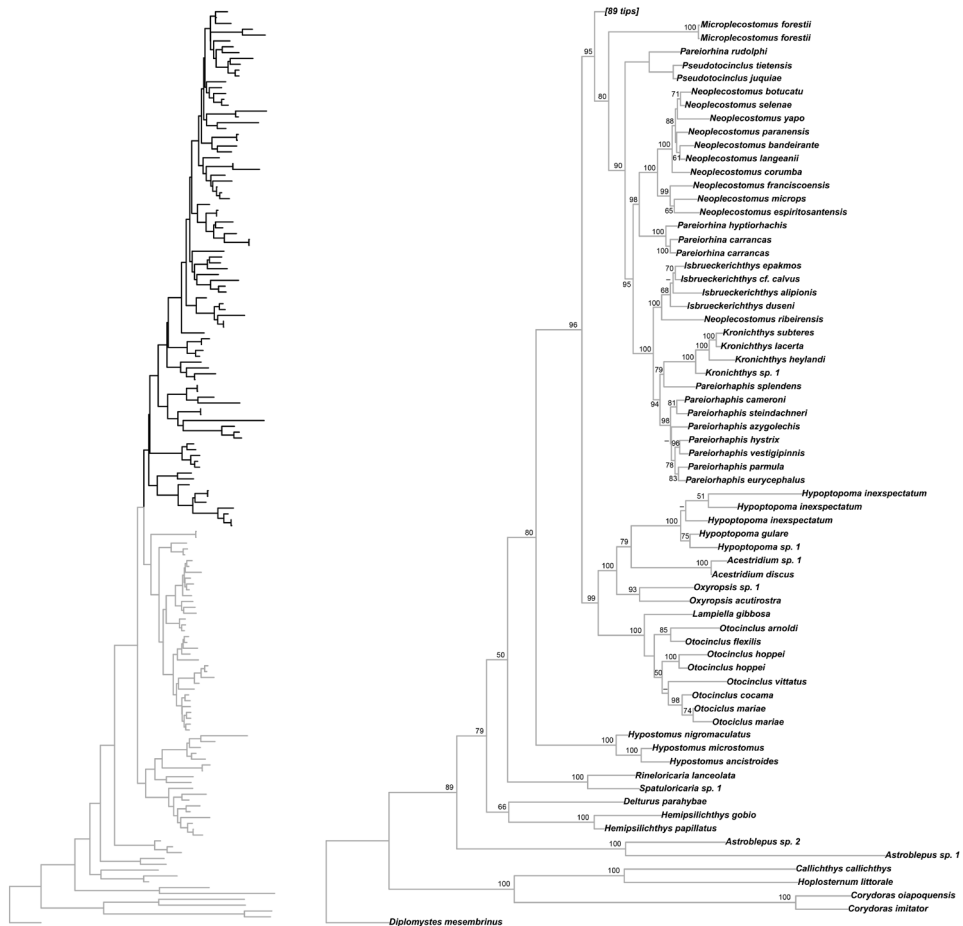


Figure 8. Partial ML tree showing the relationship among the species of the subfamilies Hypoptopomatinae and Neoplecostominae. Numbers above the branches are bootstrap values from 1000 bootstrap pseudoreplicates obtained from the ML analysis. Bootstrap values below 50% (-) are not shown.

Time calibrated tree and historical biogeography

Our time-calibrated tree estimated that the origin of the hypoptopomatine lineage was in the Paleocene, about 63.1 Mya (44.5–83.8 Mya 95% HPD), and is inferred by the DEC+J model to have been located in areas A (Atlantic Coast drainage basins) + D (Amazon and Orinoco basins) (Fig. 10 Region AD). The clade composed of the Neoplecostominae (Fig. 10 Region AD) + Othothyriinae (Fig. 11 Region AD) is estimated by BEAST to have also originated during the Paleocene, about 59.1 Mya (41.4–77.6 Mya 95% HPD), and once again, according to the DEC+J model, in areas A and D. *Microplecostomus forestii* sp. n. is found in the headwaters of the Tocantins River, one of the principal rivers of the Amazon basin (Area D). Our time-calibrated phylogeny estimated that the lineage of the new genus and species arose during the Eocene, 47.5 Mya (32.7–64.5 Mya 95% HPD).



Figure 9. Partial ML tree showing the relationship among the species of the subfamily Otothyriinae. Numbers above the branches are bootstrap values from 1000 bootstrap pseudoreplicates obtained from the ML analysis. Bootstrap values below 50% (-) are not shown.

Discussion

Taxonomy and phylogenetic relationship

The results of our molecular analyses indicated that *Microplecostomus forestii* sp. n. is the sister-group of all the other members of the Neoplecostominae (Fig. 8), with strong statistical support. *Microplecostomus forestii* sp. n. is distinguished from all other

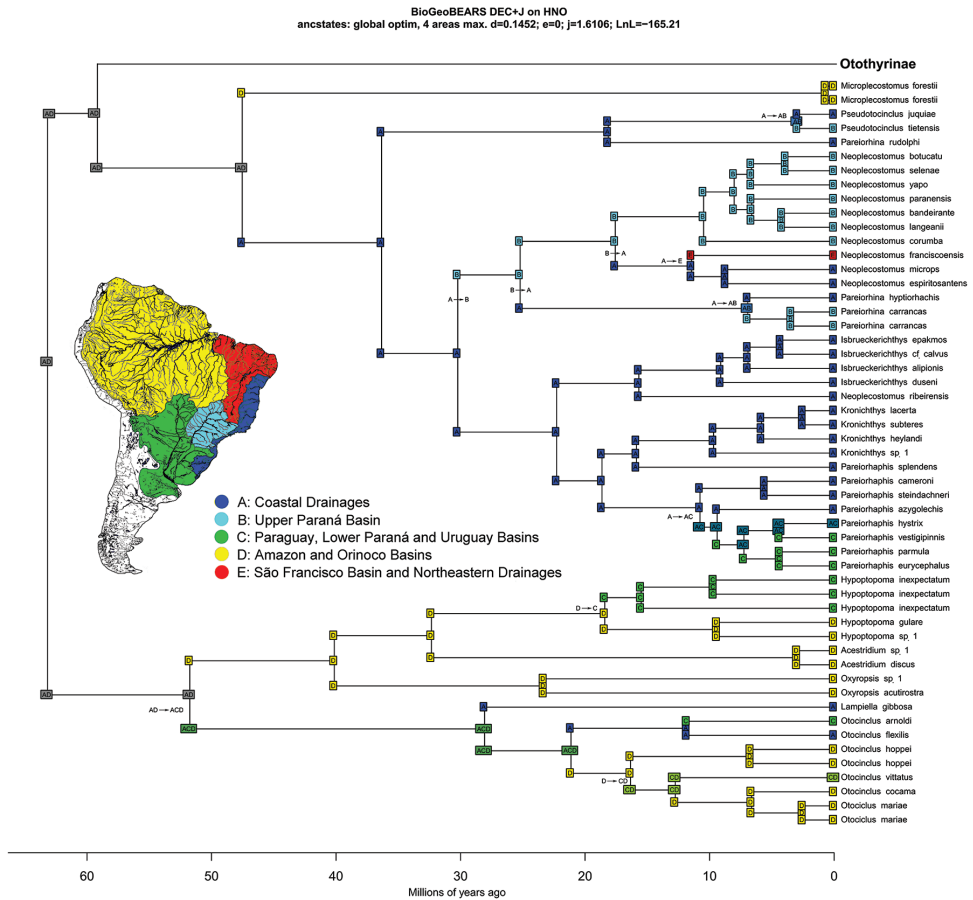


Figure 10. Time-calibrated phylogeny and ancestral range estimates for the Hypoptopomatinae and Neoplecostominae. Divergence ages were calibrated by the origins of the Siluriformes (120 Mya) and the Callichthyidae (55 Mya).

neoplecostomine species by the presence of two autapomorphic characters: (1) three hypertrophied bicuspid odontodes on the lateral portion of the body and (2) a large area without odontodes around the snout, observed in all specimens. Only one (the holotype) of the 16 specimens analyzed presented the three hypertrophied bicuspid odontodes on the lateral portion of the body. We believe that this is a sexually dimorphic character found only in large mature males, although this remains uncertain because the new taxon does not have any other obvious sexual dimorphism, and the trait is only present in the holotype, which cannot be dissected. Sexual dimorphism is very common in other neoplecostomines, in particular species of the genera *Neoplecostomus* (Langeani 1990; Zawadzki et al. 2008; Roxo et al. 2012b) and *Pareiorhaphis* (Pereira and Reis 2002; Pereira 2005). As in the present study, these species have been diagnosed primarily on the basis of the characteristics of the mature males.

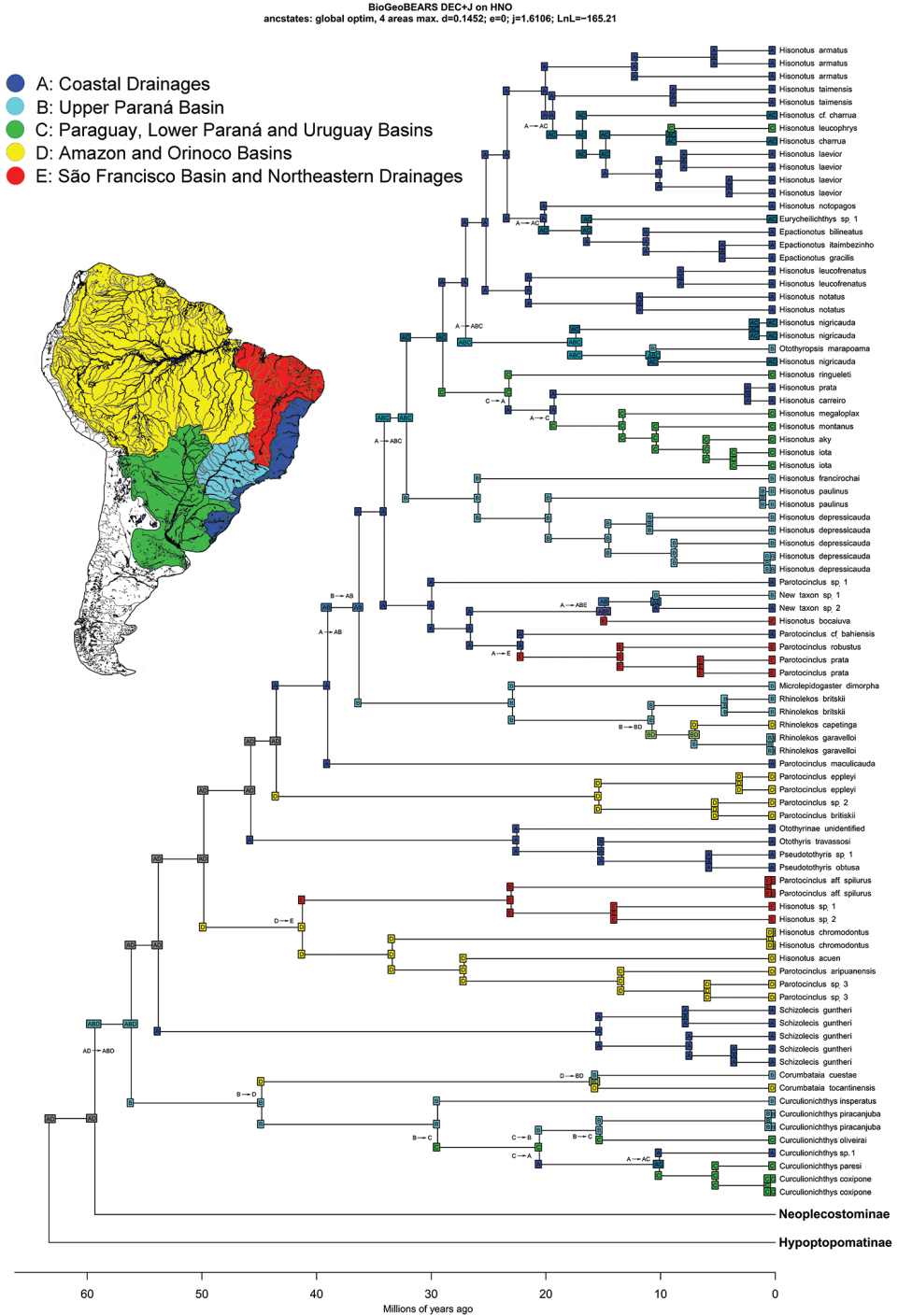


Figure II. Time-calibrated phylogeny and ancestral range estimates for the Otothyridae. Divergence ages were calibrated by the origins of the Siluriformes (120 Mya) and the Callichthyidae (55 Mya).

Another character used to distinguish *Microplecostomus forestii* sp. n. from other neoplecostomines is the presence of a post-dorsal ridge on the caudal peduncle. Bockmann and Ribeiro (2003) were the first authors to report this character in a neoplecostomine species (*Pareiorhina carrancas*), and Silva et al. (2013) also reported the structure in a second new species of the same genus, *P. hyptiorhachis*. This character is also present in species of *Corymbophanes* (Armbruster et al. 2000), a genus assigned to the subfamily Hypostominae, which is found throughout the Potaro River in Guyana, northern South America. Considering that these species are not closely related (Armbruster 2004; Roxo et al. 2014), the presence of a post-dorsal ridge appears to have arisen more than once during the evolution of these species.

The subfamily Neoplecostominae, as defined by Roxo et al. (2014), appears to be monophyletic and forms a sister group to the Otothyriinae, which together form a sister group to the Hypoptopomatinae (this relationship was first reported by Chiachio et al. 2008). The main deviation that we found from the arrangement proposed by Roxo et al. (2014) is in the relationship among the members of the genus *Hisonotus*. In the present study, the species *H. depressicauda* (Miranda Ribeiro, 1918b), *H. francirochai* (Ihering, 1928) and *H. paulinus* (Regan, 1908) appeared as a monophyletic group which includes most of the *Hisonotus* species found in southern Brazil, the type species of *Hisonotus* (i.e. *H. notatus* Eigenmann & Eigenmann, 1889), *Otothyropsis marapoama* Ribeiro, Carvalho & Melo, 2005, *Eurycheilichthys* and *Epactionotus*. In Roxo et al. (2014) *Hisonotus depressicauda*, *H. francirochai* and *H. paulinus* were not closely related to the former species, but formed a clade with *Parotocinclus* and *Hisonotus* species from the São Francisco River basin, albeit with reduced statistical support (see Fig. 4 in Roxo et al. 2014).

Historical biogeography

Using the DEC model to estimate ancestral species ranges, Roxo et al. (2014) suggested that the ancestral lineages of the Hypoptopomatinae, Neoplecostominae and Otothyriinae subfamilies (the HNO-Clade) originated on the Atlantic Coast of southeastern Brazil (area A, see Fig. 5 in Roxo et al. 2014). However, in a geographic area dominated by headwater capture events, ancestral lineages would be expected to be more widely distributed in adjacent hydrographic systems (see e.g. Albert et al. 2011). Given this, Roxo et al. (2014) did not reject the hypothesis that the ancestral lineages of the HNO-clade were more widely distributed in South America during the early Cenozoic, including much of the modern Atlantic Coast (area A), upper Paraná (area B), Paraguay, lower Paraná and Uruguay (area C), and Amazon and Orinoco basins (area D).

Our ancestral range estimates found, using the DECj model and including *Microplecostomus forestii* sp. n. in the HNO phylogeny, that the ancestral lineages of these three subfamilies were widely distributed on the Atlantic Coast (area A) and in the Amazon and Orinoco basins (area D). While these two areas are not adjacent (i.e. they

do not share an endpoint or border), a number of studies have found evidence of the historical mixing of the faunas of the headwaters of the Amazon and Paraná rivers, and the drainage basins of the Atlantic Coast. The historical connection between the Paraguay and Amazon basins has been known for more than a century (e.g. Eigenmann and Eigenmann 1891; Jordan 1896; Eigenmann 1906; Pearson 1937; Carvalho and Albert 2011; Ribeiro et al. 2013), and may account for the geodispersal (*sensu* Albert and Reis 2011) from the Amazon drainage basins (in particular the Madeira, Tocantins and Xingu) located on the Brazilian Shield. Even so, geodispersal events in the reverse direction, i.e., from south to north should also be expected (Roxo et al. 2014), and the dispersal of the hypoptopomatine lineages (*sensu* Chiachio et al. 2008) is considered to be the result of historical connections among the Amazon, Orinoco and Paraguay basins (Albert et al. 2011; Roxo et al. 2014). A number of authors have proposed headwater capture as the likely mechanism determining the distribution of ancestral fish lineages in the Tietê, Paraíba do Sul, São Francisco and Ribeira de Iguape basins on the Brazilian Shield (Ab'Saber 1957; Ab'Saber 1998; Ribeiro 2006; Roxo et al. 2012c; 2014). The historical dispersal of ancestral fish lineages between areas A and D is thus quite conceivable.

All neoplecostomine lineages are found in southern and southeastern of South America, except *Microplecostomus forestii* sp. n. and *Pareiorhaphis regani* (Giltay, 1936), which are from the Amazon basin (area D). In a paper on the evolution of plants, Stebbins (1974) discussed the concepts of evolutionary museum and evolutionary cradle, which are used to define species occurrence patterns within an area. An evolutionary cradle is defined as an area of high speciation rates, while an evolutionary museum is an area with low extinction rates, where environmental conditions combine to preserve lineages over long periods of time. Roxo et al. (2014) suggested that in the Hypoptopomatinae, the *Lampiella gibbosa* (Miranda Ribeiro, 1908) and *Otocinclus affinis* (Steindachner, 1877b) lineages are relicts of the Atlantic Coast drainage basins, considering that other *Otocinclus* species are widely distributed in the lowland Amazon and Paraná-Paraguay basins. The new genus and species described here, *Microplecostomus forestii* sp. n., also appears to be a relict lineage of the Tocantins River basin (Amazon basin), given that all other neoplecostomine species, except *Pareiorhaphis regani*, are present in the upper Paraná, lower Paraná-Paraguay, and coastal drainage basins of the Brazilian Shield.

Comparative material

Chauliocheilos saxatilis Martins, Andrade, Rosa & Langeani, 2014: paratype, MZUSP 114758, 2, 38.9–40.2 mm SL, municipality of Itamarandiba, Minas Gerais state, Brazil, tributary of the Itamarandiba River.

Curculionichthys insperatus Britski & Garavello, 2003: LBP 4945, 5, 27.3–28.5 mm SL, 2 c&s, 28.2–29.9 mm SL, municipality of Botucatu, São Paulo state, Brazil, Tietê River basin.

- Gymnotocinclus anosteos* Carvalho, Lehmann A. & Reis, 2008: LBP 17125, 3, 18.8–33.0 mm SL, municipality of Alto Paraíso de Goiás, Goiás state, Brazil, Tocantins River basin.
- Hisonotus acuen* Silva, Roxo & Oliveria, 2014: holotype, MZUSP 115350, 25.9 mm SL, municipality of Querência, Mato Grosso state, Brazil, Xingu River basin; paratype, LBP 15755, 16, 19.5–26.0 mm SL, municipality of Ribeirão Cascalheira, Mato Grosso, Xingu basin.
- Hisonotus bocaiuva* Roxo, Silva, Oliveira & Zawadzki, 2013: holotype, MZUSP 112204, 24.2 mm SL, municipality of Bocaiúva, Minas Gerais state, Brazil, São Francisco River basin; paratype, LBP 9817, 9, 3 c&s, 18.3–23.2 mm SL, municipality of Bocaiúva, Minas Gerais state, Brazil São Francisco River basin.
- Hisonotus notatus* Eigenmann & Eigenmann, 1889a: LBP 18472, 7, 30.1–38.3 mm SL, municipality of Silva Jardim, Rio de Janeiro state, Brazil, coastal drainage basin.
- Isbrueckerichthys alipionis* (Gosline, 1947): LBP 7373, 17, 31.7–81.6 mm SL, municipality of Iporanga, São Paulo state, Brazil, Ribeira de Iguape River basin;
- Kronichthys subteres* Miranda Ribeiro 1908: LBP 515, 31, 28.4–61.9 mm SL, municipality of Iporanga, São Paulo state, Brazil, Ribeira de Iguape River basin.
- Lampiella gibbosa* (Miranda Ribeiro, 1908): LBP 7430, 5, 25.6–26.1 mm SL, municipality of Jacupiranga, São Paulo state, Brazil, Ribeira de Iguape River basin.
- Microlepidogaster arachas* Martins, Calegari & Langeani, 2013: LBP 10882, 3, 22.8–35.3 mm SL, municipality of Araxás, Minas Gerais state, Brazil, Paraná River basin.
- Nannoplecostomus eleonorae* Ribeiro, Lima & Pereira, 2012: LBP 19016, 51, 19.9–25.4 mm SL, municipality of Guarani de Goiás, Goiás state, Brazil, Tocantins River basin.
- Neoplecostomus microps* (Steindachner, 1877a): LBP 8036, 38, 41.3–65.0 mm SL, municipality of Piquete, São Paulo state, Brazil, Paraíba do Sul River basin.
- Neoplecostomus franciscoensis* Langeani, 1990: LBP 6489, 50, 42.8–55.9 mm SL, municipality of São Bartolomeu, Minas Gerais state, Brazil, São Francisco River basin.
- Neoplecostomus paranensis* Langeani, 1990: holotype, MZUSP 38572, 71.4 mm SL, municipality of Cajuru, Minas Gerais state, Brazil, Grande River basin.
- Otocinclus affinis* (Steindachner, 1877b): 19, 19.5–28.9 mm SL, municipality of Pocóné, Mato Grosso state, Brazil, Paraguay River basin.
- Otocinclus vittatus* Regan, 1904: 27, 18.2–21.7 mm SL, municipality of Cáceres, Mato Grosso state, Brazil, Paraguay River basin.
- Otothyropsis marapoama* Ribeiro, Carvalho & Melo, 2005: LBP 4698, 6, 23.9–36.3 mm SL, municipality of Marapoama, São Paulo state, Brazil, Tietê River basin.
- Pareiorhaphis splendens* (Bizerril, 1995): LBP 1117, 20, 32.0–100.0 mm SL, municipality of Morretes, Paraná state, Brazil, Atlantic Coast drainage basins.
- Pareiorhaphis steindachneri* (Miranda Ribeiro, 1918a): LBP 739, 6, 33.8–49.0 mm SL, municipality of Jaraguá do Sul, Santa Catarina state, Brazil, Atlantic Coast drainage basins.
- Pareiorhina brachyrhyncha* Chamon, Aranda & Backup, 2005: LBP 12240, 50, 26.4–36.9 mm SL, municipality of Pindamonhangaba, São Paulo state, Brazil, Paraíba do Sul River basin.

- Pareiorhina cepta* Roxo, Silva, Mehanna & Oliveira, 2012d: holotype, MZUSP 111095, 41.5 mm SL, municipality of São Roque de Minas, Minas Gerais state, Brazil, São Francisco basin, paratypes, LBP 10287, 13, 21.5–43.6 mm SL, municipality of São Roque de Minas, Minas Gerais, Brazil, Paraíba do Sul River basin.
- Pareiorhina rudolphi* (Miranda Ribeiro, 1911): LBP 8044, 18, 31.7–48.9 mm SL, municipality of Piquete, São Paulo state, Brazil, Paraíba do Sul River basin.
- Parotocinclus maculicauda* (Steindachner, 1877b): LBP 2869, 15, 20.2–44.7 mm SL, municipality of Miracatu, São Paulo state, Brazil, Ribeira de Iguape River basin.
- Plesioptopoma curvidens* Reis, Pereira & Lehmann A, 2012: LBP 17394, 39, 26.1–81.7 mm SL, municipality of Cristiano Ottoni, Minas Gerais state, Brazil, São Francisco River basin.
- Pseudotocinclus juquiaie* Takako, Oliveira & Oyakawa, 2005: LBP1081, 2, 29.0–31.9 mm SL, municipality of Juquitiba, São Paulo state, Brazil, Atlantic Coast drainage basins.
- Pseudotocinclus tietensis* (Ihering, 1907): LBP 2931, 3, 38.6–62.3 mm SL, municipality of Salesópolis, São Paulo state, Brazil, Tietê River basin.
- Schizolecis guntheri* (Miranda Ribeiro, 1918b): LBP 14335, 18, 18.3–35.3 mm SL, municipality of São Sebastião, São Paulo state, Brazil, Atlantic Coast drainage basins.

Acknowledgements

The authors wish to thank Angela M. Zanata, Bruno F. Melo, Jefferson M. Henriques, Luiz H. Roxo, Marcelo Melo, Martin Taylor, Oswaldo T. Oyakawa, Priscila Camelier, Renato Devidé for their help during the collection of specimens, Maria Thereza P. Jorge for the review of the English text, Victor A. Tagliacollo for help with the biogeographic analysis, and Jonathan W. Armbruster for reading the manuscript and providing valuable suggestions. Furthermore, the authors would like to thank the editorial team for handle this study. This research was supported by the Brazilian agencies FAPESP (Fundação de Amparo à Pesquisa do Estado de São Paulo, proc. 2014/05051–5 and 2015/00691–9 to FFR, 2014/06853–8 to LEO and 2012/01622–2 to GSCS) and MCT/CNPq (Conselho Nacional de Desenvolvimento Científico e Tecnológico) (Edital Universal, proc. N. 441347/2014–2 coord. FFR).

References

- Ab'Saber AN (1957) O problema das conexões antigas e da separação da drenagem do Paraíba e Tietê. *Boletim Paulista de Geografia* 26: 38–49.
- Ab'Saber AN (1998) Megageomorfologia do Território Brasileiro. In: Cunha SB, Guerra AJT (Eds) *Geomorfologia do Brasil*. Bertrand, Rio de Janeiro, 71–106.
- Akaike H (1973) Information theory and an extension of the maximum likelihood principle. In: Petrov BN, Caski F (Eds) *2nd International Symposium on Information Theory*. Akademiai Kiado, Budapest, 267–281. doi: 10.1007/978-1-4612-1694-0_15

- Albert JS, Crampton WGR (2010) The geography and ecology of diversification in Neotropical freshwaters. *Nature Education Knowledge* 1: 13–19.
- Albert JS, Reis RE (2011) *Historical Biogeography of Neotropical Freshwater Fishes*. University of California Press, Berkeley, 408 pp.
- Albert JS, Petry P, Reis RE (2011) Major biogeographic and phylogenetic patterns. In: Albert JS, Reis RE (Eds) *Historical Biogeography of Neotropical Freshwater Fishes*. University of California Press, Berkeley, 21–57. doi: 10.1525/california/9780520268685.001.0001
- Aljanabi SM, Martinez I (1997) Universal and rapid salt-extraction of high quality genomic DNA for PCR-based techniques. *Nucleic Acids Research* 22: 4692–4693. doi: 10.1525/california/9780520268685.003.0002
- Arratia G (1987) Description of the primitive family Diplomystidae (Siluriformes, Teleostei, Pisces): morphology, taxonomy and phylogenetic implications. *Bonner Zoologische Monographien* 24: 1–120. doi: 10.1093/nar/25.22.4692
- Armbruster JW (2003) *Peckoltia sabaji*, a new species from the Guyana Shield (Siluriformes: Loricariidae). *Zootaxa* 344: 1–12.
- Armbruster JW (2004) Phylogenetic relationships of the sucker-mouth armored catfishes (Loricariidae) with particular emphasis on the Hypostominae and the Ancistrinae. *Zoological Journal of the Linnean Society* 141: 1–80. doi: 10.1111/j.1096-3642.2004.00109.x
- Armbruster JW, Sabaj MH, Hardman M, Page LM, Knouft JH (2000) Catfish genus *Corymbophanes* (Loricariidae: Hypostominae) with description of one new species: *Corymbophanes kaiei*. *Copeia* 2000(4): 997–1006. doi: 10.1643/0045-8511(2000)000[0997:CG-CLHW]2.0.CO;2
- Bertuzzo E, Muneeppeerakul R, Lynch HJ, Fagan WF, Rodriguez-Iturbe I, et al. (2009) On the geographic range of freshwater fish in river basins. *Water Resources Research* 45(11). doi: 10.1029/2009WR007997
- Bizerril CRSF (1995) Description of new species of *Hemipsilichthys* (Loricariidae, Hypostominae) from the state of Santa Catarina, Brazil. *Acta Biologica Leopoldensia* 17(1): 115–122.
- Britski HA, Garavello JC (2003) *Hisonotus insperatus*: new species, from the upper rio Paraná basin (Pisces: Ostariophysi: Loricariidae). *Copeia* 2003(3): 588–593. doi: 10.1643/CI-02-23R
- Bockmann FA, Ribeiro AC (2003) Description of a new suckermouth armored catfish of the genus *Pareiorhina* (Siluriformes: Loricariidae), from southeastern Brazil. *Ichthyological Exploration of Freshwaters* 14(3): 231–242.
- Carvalho TP, Albert JS (2011) The Amazon-Paraguay divide. In: Albert JS, Reis RE (Eds) *Historical Biogeography of Neotropical Freshwater Fishes*. University of California Press, Berkeley, California, 193–202. doi: 10.1525/california/9780520268685.003.0011
- Carvalho TP, Lehmann PA, Reis RE (2008) *Gymnotocinclus anosteos*, a new uniquely-plated genus and species of loricariid catfish (Teleostei: Siluriformes) from the upper rio Tocantins basin, central Brazil. *Neotropical Ichthyology* 6(3): 329–338. doi: 10.1590/s1679-62252008000300006
- Chamon CC, Aranda AT, Buckup PA (2005) *Pareiorhina brachyrhyncha* (Loricariidae: Siluriformes): a new species of fish from the Paraíba do Sul slope of Serra da Mantiqueira, southeastern Brazil. *Copeia* 2005(3): 550–558. doi: 10.1643/ci-04-276r

- Chiachio MC, Oliveira C, Montoya-Burgos JI (2008) Molecular systematic and historical biogeography of the armored Neotropical catfishes Hypoptopomatinae and Neoplecostominae (Siluriformes: Loricariidae). *Molecular Phylogenetics and Evolution* 49: 606–617. doi: 10.1016/j.ympev.2008.08.013
- Cockerell TDA (1925) A fossil fish of the family Callichthyidae. *Science* 62: 397–398. doi: 10.1126/science.62.1609.397-a
- Edgar RC (2004) Muscle: a multiple sequence alignment method with reduced time and space complexity. *BMC Bioinformatics* 5: 1–19. doi: 10.1186/1471-2105-5-113
- Eigenmann CH (1906) The freshwater fishes of the South and Middle America. *Popular Science* 68: 515–530.
- Eigenmann CH, Eigenmann RS (1889a) Preliminary notes on South American Nematognathi. *Proceedings of the California Academy of Sciences* 1: 119–172. doi: 10.5962/bhl.part.3477
- Eigenmann CH, Eigenmann RS (1889b) Preliminary notes on South American Nematognathi. *Proceedings of the California Academy of Sciences* 2: 28–56. doi: 10.5962/bhl.part.3477
- Eigenmann CH, Eigenmann RS (1890) South America Nematognathi. PhD Thesis, California Academy of Science, San Francisco.
- Eigenmann CH, Eigenmann RS (1891) A catalogue of the freshwater fishes of South America. *Proceedings of the United States National Museum* 14: 1–81. doi: 10.5479/si.00963801.842
- Eschmeyer W (Ed.) (2015) Catalog of Fishes. <http://researcharchive.calacademy.org/research/ichthyology/catalog/fishcatmain.asp> [Electronic version accessed 25 February 2015]
- Eschmeyer WN, Fong JD (2015) Catalog of fishes. <http://researcharchive.calacademy.org/research/ichthyology/catalog/SpeciesByFamily.asp> [Electronic version accessed 24 March 2015]
- Felsenstein J (1985) Confidence limits on phylogenies: an approach using the bootstrap. *Evolution* 39: 783–791. doi: 10.2307/2408678
- Giltay L (1936) Notes Ichthyologiques. XI. Revision du genre *Hemipsilichthys* (Loricariidae). *Bulletin du Musée Royal d'Histoire Naturelle de Belgique* 12(14): 1–7.
- Gosline WA (1947) Contributions to the classification of the loricariid catfishes. *Arquivos do Museu Nacional* 41: 79–134.
- Grande L (1987) Redescription of *Hypsidoris farsonensis* (Teleostei: Siluriformes), with a reassessment of its phylogenetic relationships. *Journal of Vertebrate Paleontology* 7: 24–54. doi: 10.1080/02724634.1987.10011636
- Grande L, de Pinna MCC (1998) Description of a second species of *Hypsidoris* and a reevaluation of the genus and family Hypsidoridae. *Journal of Vertebrate Paleontology* 18: 451–474. doi: 10.1080/02724634.1998.10011074
- Grant CEH, Lowe WH, Fagan WF (2007) Living in the branches: population dynamics and ecological processes in dendritic networks. *Ecology Letters* 10: 165–175. doi: 10.1111/j.1461-0248.2006.01007.x
- Günther A (1868) Diagnoses of some new freshwater fishes from Surinam and Brazil, in the collection of the British Museum. *Annals and Magazine of Natural History* 1(6): 475–481. doi: 10.1080/00222936808695733
- Hall TA (1999) BioEdit: a user-friendly biological sequence alignment editor and analysis program for Windows 95/98/NT. *Nucleic Acids Symposium Series* 41: 95–98.

- Hancock J (1828) Notes on some species of fishes and reptiles, from Demerara, presented to the Zoological Society by John Hancock, Esq., corr. memb. Zool. Soc. In a letter addressed to the secretary of the Society. Zoological Journal, London 4: 240–247.
- Hocutt CH, Wiley EO (1986) Zoogeography of the Freshwater Fishes of North America. John Wiley and Sons, New York, 866 pp.
- Howes GJ (1983) The cranial muscles of loricarioid catfishes, their homologies and value as taxonomic characters (Teleostei: Siluroidei). Bulletin of the British Museum (Natural History), Zoology 45: 309–345. doi: 10.5962/bhl.part.28003
- Ihering R von (1907) Diversas espécies novas de peixes nematognathas do Brazil. Notas preliminares. Revista do Museu Paulista (NS) 1(1): 13–39.
- Ihering R von (1911) Algumas espécies novas de peixes d’água doce (Nematognatha) (*Corydoras*, *Plecostomus*, *Hemipsilichthys*). Revista do Museu de São Paulo 8(1910): 380–404.
- Ihering R von (1928) Uma nova espécie de *Otocinclus* (Pisces. Nematognatha) “cascudinho” de S. Paulo. Boletim Biológico, Trabalho do Laboratório de Parasitologia da Faculdade de Medicina de São Paulo 11(42): 1–3.
- International Commission on Zoological Nomenclature (1999) International code of zoological nomenclature. Fourth Edition. The International Trust for Zoological Nomenclature, London.
- Isbrücker IJH (1980) Classification and catalogue of the mailed Loricariidae (Pisces, Siluriformes). Institute of Taxonomic Zoology, University of Amsterdam 22: 1–181.
- Jordan DS (1896) Science sketches. A.C. McClurg and Company, Chicago. doi: 10.5962/bhl.title.57764
- Kocher TD, Thomas WK, Meyer A, Edwards SV, Pääbo S, Villablanca FX, Wilson A (1989) Dynamics of mitochondrial DNA evolution in animals: Amplification and sequencing with conserved primers. Proceedings of the National Academy of Sciences 86: 6196–6200. doi: 10.1073/pnas.86.16.6196
- Langeani F (1990) Revisão do gênero *Neoplecostomus*, com a descrição de quatro espécies novas do sudeste brasileiro (Ostariophysi, Siluriformes, Loricariidae). Comunicações do Museu de Ciências e Tecnologia da PUCRS, série Zoologia 3: 3–31.
- Linnaeus C (1758) Systema Naturae (Ed. X). (Systema naturae per regna tria naturae, secundum classes, ordines, genera, species, cum characteribus, differentiis, synonymis, locis. Tomus I. Editio decima, reformata.). Holmiae, 824 pp.
- Lundberg JG (1993) African South America freshwater fish clade and continental drift: problems with a paradigm. In: Goldblatt P (Ed.) The Biotic Relationship between Africa and South America. Yale University Press, 156–199.
- Lundberg JG, Marshall LG, Guerrero J, Horton B, Malabarba MCSL, et al. (1998) The stage for Neotropical fish diversification: A history of tropical South American rivers. In: Malabarba LR, Reis RE, Vari RP, Lucena ZMS, Lucena CAS (Eds) Phylogeny and Classification of Neotropical Fishes. Edipucrs, Porto Alegre, 13–48.
- Lundberg JG, Sullivan JP, Rodiles-Hernandez R, Hendrickson DA (2007) Discovery of African roots for the Mesoamerican *Chiapas* catfish, *Lacantunia enigmatica*, requires an ancient intercontinental passage. Proceedings of the Academy of Natural Sciences of Philadelphia 156: 39–53. doi: 10.1635/0097-3157(2007)156[39:DOARFT]2.0.CO;2

- Lütken CF (1874) Ichthyographiske bidrag. I. Nogle nye eller mindre fuldstaendigt kjendte Pandsermaller, især fra det nordlige Sydamerica. Videnskabelige Meddelelser fra den Naturhistoriske Forening i Kjøbenhavn, Aaret 1873(13–14): 202–220.
- Marshall LG, Sempere T, Butler RF (1997) Chronostratigraphy of the mammal-bearing Paleocene of South America. *Journal of South America Earth Sciences* 10: 49–70. doi: 10.1016/S0895-9811(97)00005-9
- Martins FO, Calegari BB, Langeani F (2013) *Microlepidogaster arachas*, a new species of hypoptopomatine catfish (Siluriformes: Loricariidae) from the upper rio Paraná basin, Brazil. *Zootaxa* 3608: 379–388. doi: 10.11646/zootaxa.3608.5.6
- Martins FO, Andrade BN, Rosa AC, Langeani F (2014) *Chauliocheilos saxatilis*, a new genus and species of Hypoptopomatinae from rio Jequitinhonha basin, with a unique labial appendix (Teleostei: Loricariidae) *Ichthyological Exploration of Freshwaters* 25(3): 193–204.
- Matzke NJ (2013a) Probabilistic historical biogeography: new models for founder event speciation, imperfect detection, and fossils allow improved accuracy and model-testing. *Frontiers of Biogeography* 5: 242–248.
- Matzke NJ (2013b) BioGeoBEARS: BioGeography with Bayesian (and Likelihood) Evolutionary Analysis in R Scripts. Release R package version 0.2.2-2. <http://CRAN.R-project.org/package=BioGeoBEARS>
- Matzke NJ (2014) Model selection in historical biogeography reveals that founder event speciation is a crucial process in island clades. *Systematic Biology* syu056. doi: 10.1093/sysbio/syu056
- Mayden RL (1988) Vicariance biogeography, parsimony, and evolution in North American freshwater Fishes. *Systematic Zoology* 37: 329–355. doi: 10.2307/2992197
- Miranda Ribeiro A (1908) Peixes da Ribeira. Resultados de excursão do Sr. Ricardo Krone, membro correspondente do Museu Nacional do Rio de Janeiro. *Kosmos*, Rio de Janeiro 5(2): 5 unnum. pp.
- Miranda Ribeiro A (1911) Fauna brasiliense. Peixes. Tomo IV (A) [Eleutherobranchios Aspirophoros]. *Arquivos do Museu Nacional de Rio de Janeiro* 16: 1–504.
- Miranda Ribeiro A (1918a) *Hemipsilichthys* Eigenmann & Eigenmann e gêneros aliados. *Revista da Sociedade Brasileira de Ciências (Rio de Janeiro)* 2: 101–107.
- Miranda Ribeiro A (1918b) Três gêneros e dezessete espécies novas de peixes Brasileiros. *Revista do Museu Paulista* 10: 631–646.
- Mo T (1991) Anatomy, relationships and systematics of the Bagridae (Teleostei, Siluroidei) with a hypothesis of siluroid phylogeny. *Theses Zoologicae* 17, Koeltz Scientific Books, Koenigstein.
- Montoya-Burgos JI, Muller S, Weber C, Pawlowski J (1998) Phylogenetic relationships of the Loricariidae (Siluriformes) based on mitochondrial rRNA gene sequences. In: Malabarba LR, Reis RE, Vari RP, Lucena ZM, Lucena CAS (Eds) *Phylogeny and classification of Neotropical fishes*. Edipucrs, Porto Alegre, 363–375
- Muneepeerakul R, Bertuzzo E, Lynch HJ, Fagan WF, Rinaldo A, et al. (2008) Neutral meta-community models predict fish diversity patterns in Mississippi–Missouri basin. *Nature* 453: 220–222. doi: 10.1038/nature06813
- Nijssen H (1972) Records of the catfish genus *Corydoras* from Brazil and French Guiana with descriptions of eight new species (Pisces, Siluriformes, Callichthyidae). *Netherlands Journal of Zoology* 21(4): 412–433. doi: 10.1163/002829671X00078

- Nijssen H, Isbrücker IJH (1983) Sept espèces nouvelles de poissons-chats cuirassés du genre *Corydoras* Lacepède, 1803, de Guyane française, de Bolivie, d'Argentine, du Surinam et du Brésil (Pisces, Siluriformes, Callichthyidae). *Revue française d'Aquariologie Herpétologie* 10(3): 73–82.
- Oliveira C, Avelino GS, Abe KT, Mariguela TC, Benine RC, Ort G, Vari RP, Castro RMC (2011) Phylogenetic relationships within the speciose family Characidae (Teleostei: Ostariophysi: Characiformes) based on multilocus analysis and extensive ingroup sampling. *BMC Evolutionary Biology* 11: 275. doi: 10.1186/1471-2148-11-275
- Pearson NE (1937) The fishes of the Beni-Mamoré and Paraguay basin, and a discussion of the origin of the Paraguayan fauna. *Proceedings of the California Academy of Sciences* 23: 99–114.
- Pereira EHL (2005) Resurrection of *Pareiorhaphis* Miranda Ribeiro, 1918 (Teleostei: Siluriformes: Loricariidae), and description of a new species from the rio Iguacu basin, Brazil. *Neotropical Ichthyology* 3(2): 271–276. doi: 10.1590/S1679-62252005000200004
- Pereira EHL, Reis RE (2002) Revision of the loricariid genera *Hemipsilichthys* and *Isbrueckerichthys* (Teleostei: Siluriformes), with descriptions of five new species of *Hemipsilichthys*. *Ichthyological Exploration of Freshwaters* 13(2): 97–146.
- Pereira EHL, Oliveira JC, Oyakawa OT (2000) *Hemipsilichthys papillatus*, a new species of loricariid catfish (Teleostei: Siluriformes) from Minas Gerais, Brazil. *Ichthyological Exploration of Freshwaters* 11(4): 377–383.
- Pereira EHL, Zanata A, Cetra M, Reis RE (2014) A remarkable sexually dimorphic new genus and species of Neoplecostominae catfish (Siluriformes, Loricariidae) from a coastal drainage of eastern Brazil. *Copeia* 4: 673–681. doi: 10.1643/CI-14-075
- de Pinna MCC (1993) Higher-level phylogeny of Siluriformes (Teleostei, Ostariophysi), with a new classification of the order. PhD Thesis, City University of New York, New York.
- de Pinna MCC (1998) Phylogenetic relationships of Neotropical Siluriformes (Teleostei: Ostariophysi): historical overview and synthesis of hypotheses. In: Malabarba LR, Reis RE, Vari RP, Lucena CAS, Lucena ZMS (Eds) *Phylogeny and Classification of Neotropical Fishes*. Museu de Ciência e Tecnologia da PUCRS, Porto Alegre, 279–330.
- Rambaut A, Drummond AJ (2007a) Tracer v1.5. <http://beast.bio.ed.ac.uk/Tracer> [Electronic version accessed 04 November 2013]
- Rambaut A, Drummond AJ (2007b) TreeAnnotator v1.7.5. <http://beast.bio.ed.ac.uk/TreeAnnotator> [Electronic version accessed 09 November 2013]
- Ree RH, Smith SA (2008) Maximum likelihood inference of geographic range evolution by dispersal, local extinction, and cladogenesis. *Systematic Biology* 57: 4–14. doi: 10.1080/10635150701883881
- Regan CT (1904) A monograph of the fishes of the family Loricariidae. *Transaction of the Zoological Society of London* 17: 191–350. doi: 10.1111/j.1096-3642.1904.tb00040.x
- Regan CT (1908) Descriptions of new loricariid fishes from South America. *Proceedings of the Zoological Society of London* 1907(4): 795–800.
- Reis RE, Pereira EHL, Lehmann PA (2012) A new genus and species of Hypoptopomatine catfish (Siluriformes: Loricariidae) from the upper Rio São Francisco basin, Brazil. *Copeia* 2012(1): 6–11. doi: 10.1643/CI-11-068

- Ribeiro AC (2006) Tectonic history and the biogeography of the freshwater fishes from the coastal drainages of eastern Brazil: an example of faunal evolution associated with a divergent continental margin. *Neotropical Ichthyology* 4: 225–246. doi: 10.1590/S1679-62252006000200009
- Ribeiro AC, Carvalho M, Melo ALA (2005) Description and relationships of *Otothyropsis marapoama*, a new genus and species of Hypoptopomatine catfish (Siluriformes: Loricariidae) from rio Tietê basin, southeastern Brazil. *Neotropical Ichthyology* 3(4): 489–498. doi: 10.1590/S1679-62252005000400006
- Ribeiro AC, Jacob RM, Silva RRSR, Lima FCT, Ferreira DC et al. (2013) Distributions and phylogeographic data of rheophilic freshwater fishes provide evidences on the geographic extension of a central-Brazilian Amazonian palaeoplateau in the area of the present day Pantanal Wetland. *Neotropical Ichthyology* 11: 319–326. doi: 10.1590/S1679-62252013000200010
- Ribeiro AC, Lima FCT, Pereira EHL (2012) A new genus and species of a minute suckermouth armored catfish (Siluriformes: Loricariidae) from the Rio Tocantins drainage, central Brazil: the smallest known loricariid catfish. *Copeia* 2012: 637–647. doi: 10.1643/CI-11-137
- Ringuélet RA (1982) Una nueva subespecie del bagre patagonico *Diplomystes viedmensis* Mac Donagh, 1931 en el Rio Senguer (Chubut, Argentina). *Limnobiós* 2(5): 349–351.
- Roxo FF, Zawadzki CH, Costa Silva GJ, Chiachio MC, Foresti F et al. (2012a) Molecular systematics of the armored neotropical catfish subfamily Neoplecostominae (Siluriformes, Loricariidae). *Zootaxa* 3390: 33–42.
- Roxo FF, Oliveira C, Zawadzki CH (2012b) Three new species of *Neoplecostomus* (Teleostei: Siluriformes: Loricariidae) from the upper Rio Paraná basin of southeastern Brazil. *Zootaxa* 3233: 1–21.
- Roxo FF, Zawadzki CH, Alexandrou MA, Costa Silva GJ, Chiachio MC, Foresti F, Oliveira C (2012c) Evolutionary and biogeographic history of the subfamily Neoplecostominae (Siluriformes: Loricariidae). *Ecology and Evolution* 2(10): 2438–2449. doi: 10.1002/ece3.368
- Roxo FF, Silva GSC, Mehanna M, Oliveira C (2012d) Description of a new species of *Para-reiorhina* (Siluriformes: Neoplecostominae) from Rio São Francisco basin. *Zootaxa* 3512: 64–74.
- Roxo FF, Silva GSC, Oliveira C, Zawadzki CH (2013) *Hisonotus bocaiuva*, a new species from the rio São Francisco basin, Brazil (Teleostei: Loricariidae). *Ichthyological Exploration of Freshwaters* 23(4): 319–326.
- Roxo FF, Albert JS, Silva GS, Zawadzki CH, Foresti F, Oliveira C (2014) Molecular Phylogeny and Biogeographic History of the Armored Neotropical Catfish Subfamilies Hypoptopomatinae, Neoplecostominae and Otothyrinae (Siluriformes: Loricariidae). *PLoS ONE* 9(8): e105564. doi: 10.1371/journal.pone.0105564
- Roxo FF, Ochoa LE, Silva GSC, Oliveira C (2015) *Rhinolekos capetinga*: a new cascudinho species (Loricariidae, Otothyrinae) from the rio Tocantins basin and comments on its ancestral dispersal route. *ZooKeys* 481: 109–130. doi: 10.3897/zookeys.481.8755
- Schaefer SA (1987) Osteology of *Hypostomus plecostomus* (Linnaeus) with a phylogenetic analysis of the loricariids subfamilies (Pisces: Siluroidei). *Natural History Museum of Los Angeles* 394: 1–31.

- Schaefer SA (1997) The Neotropical cascudinhos: systematics and biogeography of the *Otocinclus* catfishes (Siluriformes: Loricariidae). Proceedings of the Academy of Natural Sciences of Philadelphia 148: 1–120.
- Schubart O (1964) Sobre alguns Loricariidae da bacia do Rio Mogi Guaçu. Boletim do Museu Nacional do Rio de Janeiro, Zoologia, Série Nova, 251: 1–19.
- Silva GSC, Roxo FF, Oliveira C (2013) *Pareiorbina hyptiorbaxis*, a new catfish species from Rio Paraíba do Sul basin, southeastern Brazil (Siluriformes, Loricariidae). ZooKeys 315: 65–76. doi: 10.3897/zookeys.315.5307
- Silva GSC, Roxo FF, Oliveira C (2014) *Hisonotus acuen*, a new and phenotypically variable cascudinho (Siluriformes, Loricariidae, Hypoptopomatinae) from the upper rio Xingu basin, Brazil. ZooKeys 442: 105–125. doi: 10.3897/zookeys.442.7870
- Smith GR (1981) Late Cenozoic freshwater fishes of North America. Annual Review of Ecology, Evolution and Systematics 12: 163–193. doi: 10.1146/annurev.es.12.110181.001115
- Stamatakis A, Hoover P, Rougemont J (2008) A rapid bootstrap algorithm for the RAxML web servers. Systematic Biology 57: 758–771. doi: 10.1080/10635150802429642
- Stebbins GL (1974) Flowering Plants: Evolution above the Species Level. Belknap Press of Harvard University Press, Cambridge, Massachusetts. doi: 10.4159/harvard.9780674864856
- Steindachner F (1877a) Die Süßwasserfische des südöstlichen Brasilien (III). Sitzungsberichte der Kaiserlichen Akademie der Wissenschaften. Mathematisch-Naturwissenschaftliche Classe 74(1): 559–694.
- Steindachner F (1877b) Die Süßwasserfische des südöstlichen Brasilien. (IV). Sitzungsberichte der Kaiserlichen Akademie der Wissenschaften. Mathematisch-Naturwissenschaftliche Classe 76(1): 217–230.
- Sullivan JP, Lundberg JG, Hardman M (2006) A phylogenetic analysis of the major groups of catfishes (Teleostei: Siluriformes) using rag1 and rag2 nuclear gene sequences. Molecular Phylogenetic and Evolution 41: 636–662.
- Takako AK, Oliveira C, Oyakawa OT (2005) Revision of the genus *Pseudotocinclus* (Siluriformes: Loricariidae: Hypoptopomatinae), with descriptions of two new species. Neotropical Ichthyology 3(4): 499–508. doi: 10.1590/S1679-62252005000400007
- Taylor WR, van Dyke GC (1985) Revised procedures for staining and clearing small fishes and other vertebrates for bone and cartilage study. Cybium 9(2): 107–119.
- Waters JM, Allibone RM, Wallis GP (2006) Geological subsidence, river capture, and cladogenesis of galaxiid fish lineages in central New Zealand. Biological Journal of the Linnean Society 88: 367–376. doi: 10.1111/j.1095-8312.2004.00622.x
- Weber C (1987) *Hypostomus microstomus* sp. nov. et autres poissons-chats cuirassés du Rio Parana (Pisces, Siluriformes, Loricariidae). Archives des Sciences (Geneva) 40(3): 273–284.
- Winemiller KO, López-Fernández H, Taphorn DC, Nico LG, Duque AB (2008) Fish assemblages of the Casiquiare River, a corridor and zoogeographical filter for dispersal between the Orinoco and Amazon basins. Journal of Biogeography 35: 1551–1563. doi: 10.1111/j.1365-2699.2008.01917.x
- Xia X, Lemey P (2009) Assessing substitution saturation with DAMBE. In: Lemey P, Salemi M, Vandamme AM (Eds) The Phylogenetic Handbook: A Practical Approach to DNA

and Protein Phylogeny. Cambridge University Press, 615–630. doi: 10.1017/CBO-9780511819049.022

Xia X, Xie Z (2001) DAMBE: Data analysis in molecular biology and evolution. *Journal of Heredity* 92: 371–373. doi: 10.1093/jhered/92.4.371

Xia X, Xie Z, Salemi M, Chen L, Wang Y (2003) An index of substitution saturation and its application. *Molecular Phylogenetic and Evolution* 26: 1–7. doi: 10.1016/S1055-7903(02)00326-3

Zawadzki CH, Pavanelli CS, Langeani F (2008) *Neoplecostomus* (Teleostei: Loricariidae) from the upper Rio Paraná basin, Brazil, with description of three new species. *Zootaxa* 1757: 31–48.

Supplementary material 1

Table S1

Authors: Gabriel S. C. Silva, Fábio F. Roxo, Luz E. Ochoa, Claudio Oliveira

Data type: Microsoft Word document

Explanation note: Species included in the present study with vouchers and GenBank accession numbers.

Copyright notice: This dataset is made available under the Open Database License (<http://opendatacommons.org/licenses/odbl/1.0/>). The Open Database License (ODbL) is a license agreement intended to allow users to freely share, modify, and use this Dataset while maintaining this same freedom for others, provided that the original source and author(s) are credited.

Supplementary material 2

Table S2

Authors: Gabriel S. C. Silva, Fábio F. Roxo, Luz E. Ochoa, Claudio Oliveira

Data type: Microsoft Word document

Explanation note: Models tested to estimate distribution ranges inherited by the descending lineages at each node of the tree.

Copyright notice: This dataset is made available under the Open Database License (<http://opendatacommons.org/licenses/odbl/1.0/>). The Open Database License (ODbL) is a license agreement intended to allow users to freely share, modify, and use this Dataset while maintaining this same freedom for others, provided that the original source and author(s) are credited.