

A Description of the AnimeClick.it Dataset and Ontology Used in the Japanese Visual Media Graph Project

Senan Kiryakos¹ and Magnus Pfeffer²

^{1,2} Stuttgart Media University, Stuttgart, Nobelstraße 10, 70569 Stuttgart, Germany

¹kiryakos@hdm-stuttgart.de

²pfeffer@hdm-stuttgart.de

1. Intro

This document serves to describe the ontology created by the Japanese Visual Media Graph (JVMG) project for the AnimeClick.it dataset. Following this introduction, the contents of this document are as follows: The AnimeClick website will be briefly introduced, followed by a table of the dataset, which includes its primary entities, relationships, and descriptive properties. In a future version, the document will also describe the RDF ontology created based on the source data for use with the JVMG knowledge graph.

In addition to this explanatory document, the Zenodo archive will include the full RDF ontology created by the JVMG project in the Turtle serialization, as well as an html document which catalogues the ontology.

2. Introduction to AnimeClick

AnimeClick¹ is an Italian language fan wiki for various types of Japanese visual media, namely anime, manga, and live action drama. The site covers each of these mediums broadly, and features data on creative works, characters, and producers. The site also features user ratings and recommendations, though these, along with the data for live action drama, have not been incorporated into the JVMG ontology.

3. Entities, Relationships, and Properties in the AnimeClick Dataset

This section serves to list the exact entities, relationships, and properties featured in the AnimeClick dataset; these are listed in Table 1.

Table 1. AnimeClick

Entity	Property	Value Description	Relationship
Animation Work	Type	Indicates the media type	
	Year	Typically the initial broadcast date	
	Title	Primary title on AnimeClick, typically Italian	
	Original Title	Original transliterated title	
	English Title	Title in English	
	Kanji Title	Title in Japanese	
	Staff	Related individuals or groups	Staff
	Nationality	Country of origin	
	Home Country Status	Broadcast status in the country of origin	
	Italy Status	Broadcast status in Italy	
Category	Specific animation type, e.g. film, TV series		

¹ <https://www.animeclick.it/>

	Genre	Animation genres	
	Tags	Free text tags	
	Related Works	Related Work entities	Animation / Comic Work
	Relation Type	Type of relationship between Work entities	
	Episodes	Number of episodes	
	Seasons	Broadcast seasons	
	Synopsis	Plot or content synopsis	
	Characters	Featured character appearances	Character
Comic Work	Type	Indicates the media type	
	Year	Typically the initial publication date	
	Title	Primary title on AnimeClick, typically Italian	
	Original Title	Original transliterated title	
	English Title	Title in English	
	Kanji Title	Title in Japanese	
	Staff	Related individuals or groups	Staff
	Nationality	Country of origin	
	Home Country Status	Publication status in country of origin	
	Italy Status	Publication status in Italy	
	Category	Specific comic type, e.g. manga, shounen	
	Genre	Comic genres	
	Tags	Free text tags	
	Related Works	Related Work entities	Animation / Comic Work
Relation Type	Type of relationship between Work entities		
Volumes	Number of volumes		
Synopsis	Plot or content synopsis		
Character	Name	Character name	
	Voices	Character voice artist	Staff
Staff	Name	Staff name	
	Role	Staff role	
	Kanji Name	Staff name in Japanese	
	Type	Staff type, e.g. person, company	
	Sex	Staff sex	
	Website	External website or blog link	
	Birthdate	Staff birthdate	
	Death date	Staff death date	

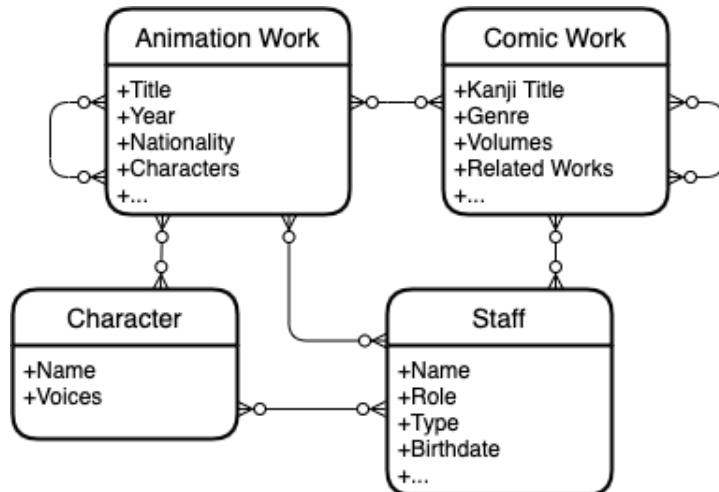


Fig 1. Entities, relationships, and a sample set of properties for the AnimeClick dataset.

Animation Work. This entity type is for various animation forms, such as TV series, films, or original video animations. Descriptive data exists in Italian for genres, plot synopsis, and free text tags, along with other general data such as initial airing date and broadcast status. Relationships to other entities include Staff for contributing individuals or corporate bodies, *Characters* featured, or related *Anime* or *Comic Works*.

Comic Work. Much like the *Animation Work* entity, but for comics and manga. Descriptive properties are also similar, though with medium-specific variations, e.g. publication date rather than TV air date, or number of volumes rather than number of episodes. Relationships to other entities are also similar, connecting *Comic Works* to other related *Comic* or *Animation Works*, as well as *Staff* contributors. Direct connections between *Comic Works* and *Characters*, however, are absent.

Character. *Character* entities lack any descriptive properties. Aside from the character's name, these entities have relationships to any *Staff* who may have voiced the character, as well as any *Animation Works* which the *Character* has appeared in.

Staff. *Staff* entities represent both individuals and corporate bodies. Descriptions include names, type of *Staff*, and the role they had in the connected entities. These connections are to *Characters* voiced, or any *Animation* or *Comic Works* that the individual or group has contributed to.