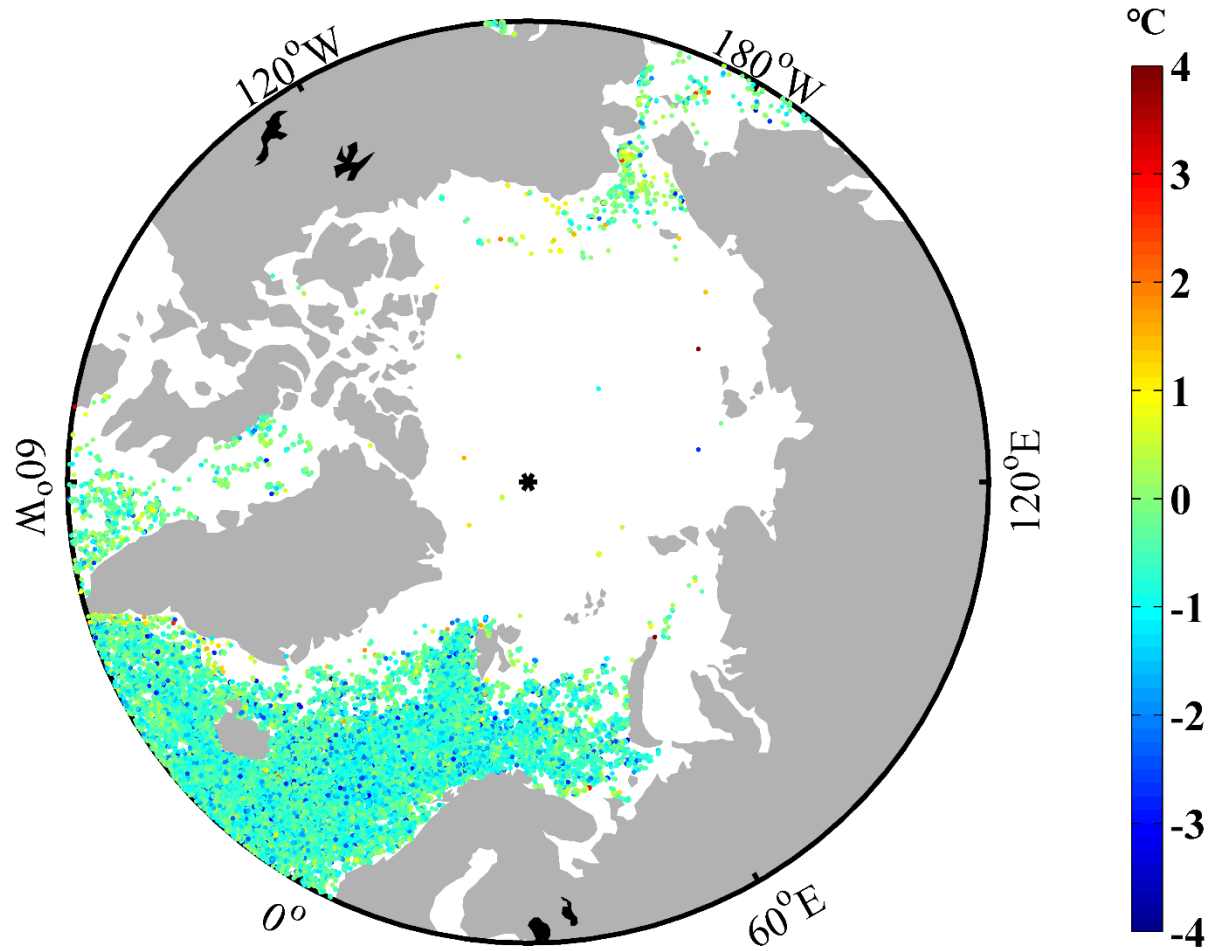


High Latitude Task Team



Sea Ice Remnant Svalbard July 17, 2008
Image credit: Camille Seaman

The Distribution of Δ SST



Collect additional observations

- Request to GHRSSST for research in situ obs
 - Will write email to team from MISST project
 - Set up website / info for contact
- Agree on GHRSSST statement on need for more Arctic in situ obs for algorithm development and validation
- Define high-priority regions for targeted in situ campaign

Objectives:

Investigate SSTs MDB errors

- Cold point due to cloud? Vapor? ?
- Look at PMW algorithms in region, assess errors
- Catalog RFI sources
- Paper on satellite validation with Arctic Sairdrone data