

Skin Cancer Classification using Random Forest

S. Nandhini, Mohammed Abdul Sofiyan, Sushant Kumar, Adnan Afridi



Abstract: Skin cancer is a very big health issue in today's fast-growing population not only for old age people but for all age groups. We are classifying skin cancer of a person according to dermatoscopic images into seven different types. We handle this issue utilizing the HAM10000 (Human-Against-Machine with 10000 training images) data-set. The finalized dataset includes 10001 dermatoscopic pictures which are released as a readiness set for academic machine learning purposes and are openly available through the ISIC archive. We are classifying skin cancer of a person according to dermatoscopic images into seven different types. Through this research a person will get to know that if he/she suffering from any kind of skin cancer or not, so before going to consult any doctor a person will have some assurance about skin cancer.

Keywords: skin cancer, dermatoscopic, HAM10000, ISIC archive

I. INTRODUCTION

The enthusiasm of the biomedical academic network for PC bolstered skin injury examination and portrayal has been expanded during the most recent years. Skin disease is among the most incessant kinds of malignant growth and one of the most dangerous tumors. Its frequency has expanded quicker than that of practically all different malignancies, and the yearly rates have expanded on the request for 3%–7% in reasonable cleaned populace in ongoing decades. As of now, somewhere in the range of 2 and 3 million non-melanoma skin malignant growths and 132000 melanoma skin tumors happen all around every year. In addition, the occurrence rates of skin malignancy have been expanding for as far back as century, it can be found in countries, for example, United Kingdom, where the growth of melanoma has extended 120% since the 90's, or United States of America (from 27,000 cases in 1991 to 91,000 out of 2018). The explanation of this example lies not simply in the reduction of the ozone layer, which has decreased the protection from the Ultraviolet radiation, yet moreover on the harming prologue to the sun or the solarium and the use of tanning.

The medicinal network has contributed a great deal of time and cash in counteractive action crusades, raising the attention to the populace. In any case, changing reckless conduct may not ensure security, as the likelihood of getting skin disease likewise relies upon the quantity of burns from the sun that individuals got for an incredible duration. Subsequently, it is likewise essential to put resources into the improvement of advancements that can be utilized for early finding of skin malignancy. The fundamental plan issues for the best possible portrayal of skin injuries concern the picture securing, the picture handling and investigation, the component extraction, and the characterization technique.

Revised Manuscript Received on November 15, 2019.

* Correspondence Author

MS. S. Nandhini*, Assistant Professor (O.G) at SRM Institute of science and technology.

Mohammed Abdul Sofiyan, Department of B.tech in SRM Institute of science and technology.

Sushant Kumar, Department of B.tech in SRM Institute of science and technology.

Adnan Afridi, Department of B.tech in SRM Institute of science and technology.

© The Authors. Published by Blue Eyes Intelligence Engineering and Sciences Publication (BEIESP). This is an [open access](http://creativecommons.org/licenses/by-nc-nd/4.0/) article under the CC BY-NC-ND license (<http://creativecommons.org/licenses/by-nc-nd/4.0/>)

Two of the real impediments of dermoscopy are its subjectivity and necessity of broad preparing. An extraordinary effort has been made by the exploration network in the improvement of Computer Aided Diagnosis apparatuses that can be utilized by dermatologists to defeat the previously mentioned problems. This system consists of following steps:

- a) Image pre-processing
- b) Lesion-segmentation
- c) Feature-extraction
- d) Feature-selection
- e) Classification.

A. IMAGE PREPROCESSING

Image pre-processing is a significant advancement to manage pictures that don't have adequate quality to be inquired about. This nonappearance of huge worth can be an immediate consequence of the vicinity of old rarities (e.g., hair) that can oppositely influence the presentation of the resulting progresses. Dermoscopy pictures might be procured utilizing various contraptions and light conditions, rendering clashing covering data. Thusly, it might be essential to join a covering correction step in the pre-dealing with organize.

B. LESION-SEGMENTATION

Lesion-Segmentation is an inconvenient assignment that has been completely investigated in the organization. The amazing assortment of lesion shapes, sizes, and tints comparatively as various skin types and surfaces make it hard to build up a strong division figuring. A careful division is recognized to be basic to accomplish a genuine extraction of highlights and following lesion delineation. To evade potential misclassification in perspective on mistaken division, a few computer-aided design structures intertwine self-loader division.

C. FEATURE-EXTRACTION

Feature-extraction is a huge development to get a discriminative depiction of the skin wounds. Finding fitting features is a problematic system and a huge amount of research has been performed in this field, causing it possible to recognize an immense scope of features that to portray skin wounds.

D. FEATURE-SELECTION

Feature-selection is used to reduce the dimensionality of the feature space in a bit of the computer-aided design structures by discarding unnecessary, abundance, or noisy features.

E. CLASSIFICATION

Lesion classification is the last advance of the computer-aided design framework. Here, a classification calculation is set up to envision an investigation.



Most by far of the computer-aided design framework base on the capability among melanoma and friendly or atypical nevi, as a result of significant level of danger related with the past kind of malignant development.

II. RANDOM FOREST CLASSIFIER

A sporadic wood multiway classifier involves different trees, with each tree created using some sort of randomization. The leaf center points of each tree are named by evaluations of the back spread over the image classes. Every inside center point contains a test that best parts the space of data to be described. An image is gathered by sending it down each tree and conglomerating the landed at leaf transports. Assertion can be mixed at two during planning: in subsampling the arrangement data with the objective that each tree is created using a substitute subset; and in picking the center point tests.

III. RANDOM FOREST ALGORITHM

Random Forest include following steps:

1. First picking preparing dataset. Use the bootstrap arbitrary inspecting strategy to recoup K preparing sets from the first dataset of N properties, with the size of each preparation set proportional to that of the first preparing dataset.
2. Amassing the Random Forest model. Make an arrangement relapse tree for the majority of the bootstrap arranging sets to pass on K decision trees to layout a "Forest" these trees are not pruned. Looking improvement of each tree, this methodology doesn't pick the best highlights as internal focus focuses for branches anyway rather the extending system is an arbitrary choice of $m \leq M$ everything being proportional.
3. Make clear casting a ballot. Since the readiness methodology of each choice tree is autonomous, the arrangement of the arbitrary backwoods can work in parallel, which basically improves productivity. The arbitrary woods can be worked by joining K choice trees prepared similarly. When ordering the information tests, the results depend upon the fundamental democratic of the yield of each choice tree. The Random Forest count chooses the examples by building a movement of free and passed on choice trees and chooses the last class of the model according to each choice tree.

The confusion matrix of skin cancer cancer classification:

$$\text{True Positive Rate} = \text{TP} / (\text{TP} + \text{FN}).$$

$$\text{Recall} = \text{True Positive}.$$

$$\text{Positive Rate} = \text{FP} / (\text{FP} + \text{TN}).$$

$$\text{Positive Predictive Value} = \text{TP} / (\text{TP} + \text{FP}).$$

$$\text{Accuracy} = (\text{TP} + \text{TN}) / (\text{FP} + \text{TP} + \text{TN} + \text{FN}).$$

Abbreviation:

TP = True-Positive

FP = False-Positive

TN = True-Negative

FN = False-Negative

$$f_i = \frac{\sum_{j:\text{node } j \text{ splits on feature } i} n_{ij}}{\sum_{k \in \text{all nodes}} n_{ik}}$$

Feature Ranking can be calculated by the formula:

$$RFf_i = \frac{\sum_{j \in \text{all trees}} \text{norm}f_{ij}}{T}$$

The final feature, at the Random Forest level, is its average over all the trees. The sum of the feature's importance value on each tree is calculated and divided by the total number of trees:

General decision tree for random forest algorithm:

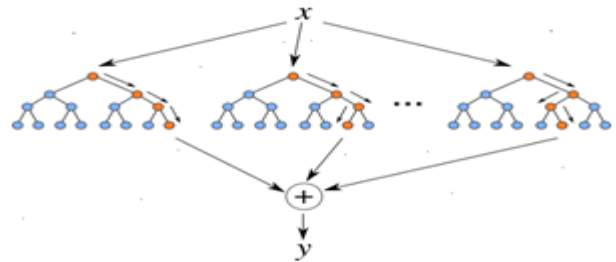


Fig. 1. General Decision Tree

Samples dermatoscopic images for the 7 different types of skin lesions:



Fig. 2. Melanoma

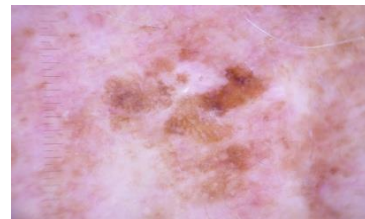


Fig. 3 Benign keratosis-like lesion



Fig. 4. Melanocytic nevi



Fig. 5. Basal Cell Carcinoma

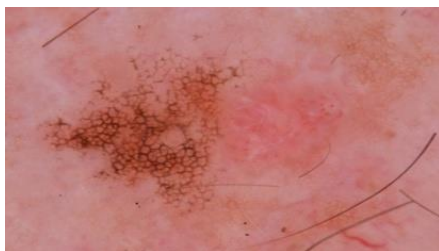


Fig. 6. Vascular Lesions



Fig. 7. Actinic keratosis

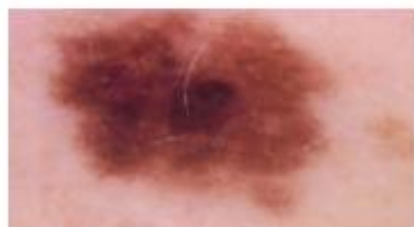


Fig. 8. Dermatofibroma

IV. TYPES OF SKIN CANCER

A. Basal Cell Carcinoma

Basal cell carcinoma is a cancer that creates on parts of your skin that get a lot of sun. This cancer is most likely not going to spread from your skin to various bits of your body, anyway it can move close by into bone or other tissue under your skin. A couple of meds can shield that from happening and discard the cancer. The tumors start off as meager sparkly thumps, as a general rule on your nose or various bits of your face. Regardless, you can get them on any bit of your body, including your trunk, legs, and arms.

B. Benign-keratosis-Lesion

Benign-keratosis-Lesion are the most broadly perceived benign cutaneous tumors, and in adults Benign-keratosis-Lesion skin are warty, keratotic skin advancement that first present after the fourth decade. The measure from two or three millimeters to centimeters the concealing extents from pink to tan to dull dim shaded. Lesions can be particular or different. After some time, patients develop wherever from a couple to a few Benign-keratosis-Lesion. Various patients request removal of Benign-keratosis-Lesion skin,

particularly when different or enormous, considering their ugly appearance.

C. Dermatofibroma

Dermatofibroma is a regular cutaneous handle of obscure etiology that happens considerably more typically in ladies. Dermatofibroma an incredible piece of the time makes on the farthest centers (by and large the lower legs) and is regularly asymptomatic, despite the manner in which that pruritus and delicacy can be open. It is amazingly the most by and large saw inconvenient skin tumor. Diverse well-portrayed, histologic subtypes of dermatofibroma have been spoken to. Clearing of the tumor is generally not usually required except for if definitive shortcoming exists or especially upsetting manifestations are available.

D. Melanocytic Nevi

Melanocytic nevi are liberal neoplasms of melanocytes and appear in a ton of varieties, which all are joined into our game-plan. The groupings may isolate in a general sense from a dermatoscopic point of view. As opposed to melanoma they are commonly symmetric concerning the disseminating of masking and structure.

E. Melanoma

Melanoma is a malignant neoplasm gotten from melanocytes that may show up in various assortments. At whatever point isolated in a beginning time it will when all is said in done be soothed by direct wary extraction. Melanomas can be noticeable or noninvasive. We combined all assortments of melanoma solidifying melanoma, in any case banned non-pigmented, subungual, visual or Melanomas.

F. Vascular

Vascular lesions are generally run of the mill assortments from the standard of the skin and basic tissues, significantly more reliably known as pigmentations. There are three basic classes of vascular lesions: Hemangiomas, Vascular Malformations, and Pyogenic Granulomas. While these skin pigmentations can seem, by all accounts, to be close now and again, they each change like starting stage and essential treatment.

V. RESULT

In this csv file, there are 6 independent features and one target variable.

Independent Features – lesion id, image id, dx_type, age, sex, localization.

Dependent variable: dx

Lesion id and image id is inserted based on image name and used in the dataset. Localization feature in the dataset determines the position of skin where the possibility of skin cancer is detected and further the procedure of classification will be done based on all the independent variables and images given as the input.

Skin Cancer Classification using Random Forest

	lesion_id	image_id	dx	dx_type	age	sex	localization
1	HAM_000	ISIC_0027	bkl	histo	80	male	scalp
2	HAM_000	ISIC_0025	bkl	histo	80	male	scalp
3	HAM_000	ISIC_0026	bkl	histo	80	male	scalp
4	HAM_000	ISIC_0025	bkl	histo	80	male	scalp
5	HAM_000	ISIC_0031	bkl	histo	75	male	ear
6	HAM_000	ISIC_0027	bkl	histo	75	male	ear
7	HAM_000	ISIC_0029	bkl	histo	60	male	face
8	HAM_000	ISIC_0029	bkl	histo	60	male	face
9	HAM_000	ISIC_0025	bkl	histo	70	female	back
10	HAM_000	ISIC_0025	bkl	histo	70	female	back
11	HAM_000	ISIC_0025	bkl	histo	55	female	trunk
12	HAM_000	ISIC_0029	bkl	histo	85	female	chest
13	HAM_000	ISIC_0025	bkl	histo	85	female	chest
14	HAM_000	ISIC_0025	bkl	histo	70	male	trunk
15	HAM_000	ISIC_0032	bkl	histo	70	male	trunk
16	HAM_000	ISIC_0031	bkl	histo	75	male	upper extremity
17	HAM_000	ISIC_0025	bkl	histo	75	male	upper extremity
18	HAM_000	ISIC_0029	bkl	histo	70	male	chest
19	HAM_000	ISIC_0032	bkl	histo	70	male	chest
20	HAM_000	ISIC_0032	bkl	histo	70	female	face
21	HAM_000	ISIC_0025	bkl	histo	60	male	back
22	HAM_000	ISIC_0025	bkl	histo	60	male	back
23	HAM_000	ISIC_0025	bkl	histo	60	male	back



Mohammed Abdul Sofiyan, 3rd year cse undergraduate pursuing B.tech in SRM Institute of science and technology.



Sushant Kumar, 3rd year cse undergraduate pursuing B.tech in SRM Institute of science and technology.



Adnan Afridi, 3rd year cse undergraduate pursuing B.tech in SRM Institute of science and technology.

FIG. 9. TRAINING DATA SET

VI. CONCLUSION

In this paper we have discussed about the classification of 7 different types of skin lesions using step by step algorithm. We have used Random Forest Algorithm to make decision about the type of diagnosis. And overall, we have got the accuracy of 97.3% on training dataset. We hope that our work will be beneficial for any person researching on this field to make further advancement.

REFERENCES

1. Argenziano, G. et al. Interactive Atlas of Dermoscopy (Edra Medical Publishing and New Media: Milan, 2000).
2. Esteva, A. et al. Dermatologist-level classification of skin cancer with deep neural networks. *Nature* 542, 115–118 (2017).
3. Stevenson, A. D., Mickan, S., Mallett, S. & Ayya, M. Systematic review of diagnostic accuracy of reflectance confocal microscopy for melanoma diagnosis in patients with clinically equivocal skin lesions. *Dermatol Pract Concept* 3, 19–27 (2013).
4. Akay, B. N., Kocyigit, P., Heper, A. O. & Erdem, C. Dermoscopy of flat pigmented facial lesions: diagnostic challenge between pigmented actinic keratosis and lentigo maligna. *Br J Dermatol* 163, 1212–1217 (2010).
5. Tschandl, P., Rosendahl, C. & Kittler, H. Dermoscopy of flat pigmented facial lesions. *J Eur Acad Dermatol Venereol* 29, 120–127 (2015).
6. Lallas, A. et al. The dermatoscopic universe of basal cell carcinoma. *Dermatol Pract Concept* 4, 11–24 (2014).
7. Braun, R. P. et al. Dermoscopy of pigmented seborrheic keratosis: a morphological study. *Arch Dermatol* 138, 1556–1560 (2002).
8. Zaballos, P. et al. Dermoscopy of solitary angiokeratomas: a morphological study. *Arch Dermatol* 143, 318–325 (2007).
9. Zaballos, P. et al. Dermoscopy of pyogenic granuloma: a morphological study. *Br J Dermatol* 163, 1229–1237 (2010).
10. Wurm, E. et al. The value of reflectance confocal microscopy in diagnosis of flat pigmented facial lesions: a prospective study. *J Eur Acad Dermatol Venereol* 31, 1349–1354 (2017).

AUTHORS PROFILE



MS. S. Nandhini, Assistant Professor (O.G) at SRM Institute of science and technology. Work experience in area of Image Processing.