

Linzer biol. Beitr.	48/2	1149-1185	19.12.2016
---------------------	------	-----------	------------

**The Chloriontinae, Sceliphrinae and Sphecinae Wasps of the "Biologiezentrum Linz" – Collection in Linz, Austria including the Genera *Chalybion* DAHLBOM, *Chlorion* LATREILLE, *Dynatus* LEPELETIER de SAINT FARGEAU, *Penepodium* MENKE, *Podium* FABRICIUS, *Sceliphron* KLUG, *Stangeella* MENKE and *Trigonopsis* PERTY (Hymenoptera, Apoidea, Sphecidae) and description of the new species *Chalybion ohli* from Madagascar**

Hermann DOLLFUSS

**Abstract:** A total of 3.672 specimens of the genera *Chalybion* (648♀♀, 908♂♂), *Chlorion* (40♀♀, 63♂♂), *Dynatus* (1♂), *Penepodium* (9♀♀, 16♂♂), *Podium* (7♀♀, 5♂♂), *Sceliphron* (1.115♀♀, 822♂♂), *Stangeella* (12♀♀, 22♂♂), and *Trigonopsis* (2♀♀, 2♂♂) were examined. All information on localities, dates of capture and the name of the collectors are listed. The new species *Chalybion ohli* from Madagascar and the hitherto unknown males of *Chalybion dolicho thorax*, *Chalybion sommereni* and the female of *Chalybion mochi* are described.

**Key words:** Apoidea, Sphecidae, Sceliphrinae, Chloriontinae, *Chalybion*, *Chlorion*, *Dynatus*, *Penepodium*, *Podium*, *Sceliphron*, *Stangeella*, *Trigonopsis*.

### Introduction

To complete my previous publications (DOLLFUSS 2001, 2004a, 2004b, 2006, 2008a, 2008b, 2010b, 2013b, 2015b) I have identified the Sceliphrini of the collection of "Biologiezentrum Linz" in Austria.

The following papers were used for determination: Genus *Chalybion*: ARNOLD 1928, BOHART & MENKE 1963, HENSEN 1988, KOHL 1918, STANDFUSS & STANDFUSS 2006. Genus *Chlorion*: de BEAUMONT 1962, KOHL 1890, MENKE 1961, MENKE & WILLINK 1964, WILLINK 1951. Genus *Dynatus*: BOHART & MENKE 1976, KOHL 1902. Genus *Penepodium*: KOHL 1902. Genus *Podium*: BOHART & MENKE 1963, KOHL 1902, MENKE 1973, OHL 1996. Genus *Sceliphron*: ARNOLD 1928, FERNANDEZ & CASTRO-HUERTAS 2014, HENSEN 1987, KOHL 1918, NAUMANN 1983, SCHMID-EGGER 2005, van der VECHT & BREUGEL 1968. Genus *Stangeella*: KOHL 1890, WILLINK 1951. Genus *Trigonopsis*: KOHL 1902, VARDY 1978.

Rarely collected species were compared with specimens from the "Kohl's collection" in the Museum of Natural History in Vienna (NHMW).

**Material examined****Subfamily Chloriontinae FERNALD, 1905****Genus Chlorion LATREILLE, 1802 (40 ♀♀, 63 ♂♂)*****Chlorion aerarium* PATTON, 1879 (1 ♂)**

U S A : 1 ♂, Ariz., Florida, Wash., Santa Cruz Co., 12.VII.2000, leg. ?

***Chlorion cyaneum* DAHLBOM, 1843 (1 ♂)**

U S A : 1 ♂, Ariz., Florida, Wash., Santa Cruz Co., 12.VII.2000, leg. ?

***Chlorion funereum* GRIBODO, 1879 (2 ♀♀, 6 ♂♂)**

O m a n : 1 ♀, 1 ♂, Dhofar province, Rakhyut, 16°45'N 53°24'E, 6.X.2013, leg. J. Halada; 1 ♂, Dhofar province, Takwa, 21.IX.2003, ~ 30m, leg. Jakl; 2 ♂♂, Dhofar province, Wadi al Mughsayl ~ 500m, 30.VIII-7.IX.2007, leg. Jakl.

U n i t e d A r a b E m i r a t e s : 1 ♀, 2 ♂♂, Al Ain, IV.-V.1998, leg. Gillet, det. Guichard.

***Chlorion hemipyrrhum* (SICHEL, 1863) (2 ♀♀, 5 ♂♂)**

A r g e n t i n i a : 1 ♂, W Catamarca, N Chumbicha, ruta 60, 28°48'S 66°23'W, 1000m, 7.II.2010, leg. M. Halada; 1 ♂, ruta 40, 10 km W Belen, 27°44'S 67°10'W, 1000m, 8.II.2010, leg. M. Halada; 2 ♀♀, 1 ♂, Prov. Stgo. Del Estemo Chaya, IV.1962, leg. Walz; 1 ♂, Prov. Santiago del Estero Choya, IV.1962, leg. Harmann.

B r a s i l i a : 1 ♂, Sao Paulo, leg. ?;

***Chlorion hirtum* (KOHL, 1885) (3 ♀♀, 3 ♂♂)**

E g y p t : 1 ♂, Wadi Hof, 5.III.1937, leg. Priesner, det. Guichard; 1 ♀, Sinai Ferrau, V.1934, leg. Priesner.

O m a n : 1 ♀, 1 ♂, 17 km W Súr, 15.III.2015, leg. Snižek; 1 ♂, Dhofar province, Rakhyut, 16°45'N 53°24'E, 5-20m, 23.III.2015, leg. J. Halada; 1 ♀: label in arabic, unreadable!

***Chlorion lobatum* (FABRICIUS, 1775) (7 ♀♀, 9 ♂♂)**

L a o s : 2 ♀♀, 1 ♂, Vientiane province, 55 km N Vientiane, 18°27'N 102°49'E, 100m, 4.-18.V.2005, leg. Kressl; 1 ♀, Province Hua Phan, Phou Pan (Mt.), Ban Saleui (Village), 20°13'30"N 103°59'26"E, 1350-1900m MSL, 1.-3.VI.2009, leg. Holzschuh & locals; 1 ♀, Boli Kham Xai province, 18°21'N 105°08'E, Ban Nape (8kmNE), 600m, 1.-18.V.2001, leg. Kubáň, det. Schmid-Egger 2005; 2 ♀♀, Pakse env., 18.-30.IV.1999, leg. Spevár, det. Schmid-Egger 2005.

N e p a l : 1 ♀, 3 ♂♂, Narayani Zone, Chitawan Distr., Chitawan Nat.Park, Sauraha-Thati-Bagh Mara, 200-500m, 17.-21.V.1996, leg. Čechovsky, det. Schmid-Egger 2005; 4 ♂♂, Kosi Zone, Dhankuta Distr., Arun valley, Dharan env., 500m, 22.-23.V.1996, leg. Čechovsky, det. Schmid-Egger 2005.

T h a i l a n d : 1 ♂, Thimonghata, 350m, 15°02'N 98°35'E, leg. Kubáň, det. Schmid-Egger 2005.

***Chlorion maxillosum* (POIRET, 1787) (20 ♀♀, 36 ♂♂)**

B e n i n : 1 ♀, 15 km SE Save, 8.-25.IV.2000, leg. J. Halada, det. Schmid-Egger 2005.

E t h i o p i a : 1 ♀, Wellega province, 70 km S Nekemte, 5.IV.2007, leg. J. Halada.

- K e n y a** : 1 ♀, E729, Sosoma, 202 km E Thika, 20.XI.2007, leg. Snižek; 1 ♂, W Mwingi, 14.V.2007, leg. M. Halada; 1 ♀, Voi (Tsavo) env., 8.-18.XI.1996, leg. M. Halada, det. Schmid-Egger 2005; 1 ♂, Voi (Tsavo), 11.-14.V.1997, leg. M. Halada, det. Schmid-Egger 2005.
- M a l a w i** : 1 ♂, 4 km S Kasungu, 28.XII.2001, leg. J. Halada, det. Schmid-Egger 2005.
- M o z a m b i q u e** : 1 ♂, 35 km SW Chimoio, 19°08'S 33°09'E, 700m, 14.VII.2005, leg. Kadlecova; 1 ♂, 25 km N Massinga, 23°07'S 35°00'E, 36m, 26.IX.2005, leg. J. Halada; 1 ♀, 40 km SW Chimoio, 19°23'S 33°11'E, 650m, 16.XII.2005, leg. Kadlecova; 1 ♀, 6 ♂, 15 km S Guru, 17°33'S 33°16'E, 800m, 30.XI.2005, leg. Kadlecova; 1 ♀, 65 km S Vlongné, 15°13'S 34°19'E, 1250m, 8.XII.2005, leg. Kadlecova; 1 ♀, 4 ♂, Inhambane province, 25 km N Massinga, 5.+29.XII.2003, leg. J. Halada, det. Schmid-Egger 2005.
- S o u t h A f r i c a** : 1 ♀, KwazuluNatal, Tembe Elephant Park, 50m, Ndume, 27°02'S 32°23'E, 30.XII.2007, leg. M. Halada; 2 ♂, KwazaZulu Natal Mbazwana, 6.XII.2002, leg. M. Halada, det. Schmid-Egger 2005; 1 ♂, KwazaZulu Natal-N, Tembe Elephant Park, 8.XII.2002, leg. M. Halada, det. Schmid-Egger 2005.
- T a n z a n i a** : 2 ♂, Pwani province, 15 km W Kibiti, 07°47'S 38°49'E, 100m, 15.I.2007, leg. Snižek, leg. J. Halada; 1 ♂, Pwani province, 100 km S Dar Salaam, 07°42'S 39°13'E, 45m, 17.I.2007, leg. J. Halada; 1 ♂, Mbeya province, 35 km NE Mbeya, 1150m, 08°46'S 33°41'E, 4.I.2007, leg. J. Halada.
- T u n i s i a** : 1 ♀, Douz, S Kebili, 30.VIII.1979, ex coll. Max Schwarz.
- Z a m b i a** : 1 ♂, 100 km W Solwezi, 12°13'S 25°39'E, 1400m, 10.XI.2005, leg. M. Halada; 2 ♀, 5 ♂, 150 km S Mwinilunga, 13°11'S 24°14'E, 1100m, 18.X.+2.XI.2008, leg. M. Halada; 1 ♀, 50 km E Mwinilunga, 11°43'S 24°47'E, 1400m, 2.XI.2008, leg. M. Halada; 50 km E Mwinilunga, 11°43'S 24°47'E, 1400m, 18.X.2008, leg. M. Halada; 1 ♀, 1 ♂, 100 km NE Livingstone, 26.XII.2002, leg. J. Halada, det. Schmid-Egger 2005; 1 ♀, 30 km W Solwezi, 7.I.2003, leg. J. Halada, det. Schmid-Egger 2005; 1 ♀, 50 km W Kasama, 26.XI.2004, leg. Snižek, det. Schmid-Egger 2005; 1 ♀, Mkushi env. E, 16.-18.XII.2004, leg. Snižek, det. Schmid-Egger 2005; 1 ♀, 60 km N Mpika mts., 6.XII.2002, leg. J. Halada, det. Schmid-Egger 2005; 1 ♂, 50 km SW Luwingu, N lake Bangweulu, 27.XI.2004, leg. Snižek, det. Schmid-Egger 2005.
- Z i m b a b w e** : 1 ♂, S Harare Beatrice Ngezi env., 8.XI.2014, leg. Snižek; 1 ♀, Bubi, Bubi river, 80 km NE Beitbridge, 8.XII.1998, leg. J. Halada, det. Schmid-Egger 2005; 1 ♀, Mvuma, route Gutu, Chatsworth, XI.1998, leg. Snižek, det. Schmid-Egger 2005; 1 ♂, 80 km NE Beitbridge, Bubi, Bubi river, 8.XII.1998, leg. J. Halada, det. Schmid-Egger 2005; 1 ♂, 50 km S Bulawayo, Matobo, 3.-5.XII.1998, leg. J. Halada, det. Schmid-Egger 2005; 1 ♂, 90 km E Masvingo, Nyika, 23.I.1998, leg. M. Halada, det. Schmid-Egger 2005; 1 ♂, 25 km NE Shamva, Nyagui r., 15.XII.1998, leg. M. Halada, det. Schmid-Egger 2005.

***Chlorion maxillosum* ssp. *ciliatum* (FABRICIUS, 1787) (1 ♀)**

**S e n e g a l** : 1 ♀, Oussouye, Casamance, 2.X.1988, leg. Adlbauer.

***Chlorion semenowi* ssp. *occidentale* de BEAUMONT, 1962 (1 ♀)**

**U n i t e d A r a b E m i r a t e s** : 1 ♀, Al Ain, IV.-V.1998, leg. Gillet, det. Guichard.

***Chlorion strandi* WILLINK, 1951 (2 ♀ ♀, 2 ♂ ♂)**

**A r g e n t i n i a** : 1 ♀, 1 ♂, Catamarca Tinogaster, II.1963, leg. Walz, det. Schmid-Egger; 1 ♀, 1 ♂, Pronuniamiento, Province Entre Rios, II.1964, leg. Walz, det. Schmid-Egger.

***Clorion viridicoeruleum* LEPELETIER de SAINT FARGEAU and AUDINET-SERVILLE, 1828 (1 ♀)**

**A r g e n t i n i a** : 1 ♀, N Cordoba, W Ascochinga, Sierra de Cordoba N, 1100m, 8.I.2012, leg. Snižek

**Subfamily Sceliphrinae ASHMED, 1899 (1815)****Tribe Podiinae de SAUSSURE, 1892****Genus *Dynatus* LEPELETIER de SAINT FARGEAU, 1845 (1♂)*****Dynatus burmeisteri* (BURMEISTER, 1861) (1♂)**

A r g e n t i n i a : 1♂, Pronuniamiento, province Entre Rios, II.1964, leg. Walz.

**Genus *Penepodium* MENKE, 1976 (9♀♀, 16♂♂)*****Penepodium egregium* (de SAUSSURE, 1867) (6♀♀, 16♂♂)**

A r g e n t i n i a : 6♀♀, 13♂♂, Pronun Iamiento, province Entre Rios, II.1964, leg. Walz; 1♂, 500 km NW Rosario, 28°57'S 62°47'W, 100m, 2.II.2009, leg. M. Halada; 2♂♂, unreadable, 1986, leg. Pena.

***Penepodium haematogastrum* (SPINOLA, 1851) (1♀)**

S e n e g a l : 1♀, Santa Cruz, Nuflo de Chavez, Ascension, 500m, XI.1963, leg.?

***Penepodium princeps* (KOHL, 1902) (1♀)**

P a r a g u a y : 1♀, Carlos Pfännl, II.1970, leg. Anders.

***Penepodium* sp. near *fumipenne* (1♀)**

A r g e n t i n i a : 1♀, W Catamarca, N Chumbicha, ruta 60, 28°48'S 66°23'W, 1000m, 9.I.2012, leg. M. Halada.

**Genus *Podium* FABRICIUS, 1804 (7♀♀, 2♂♂)*****Podium denticulatum* F. SMITH, 1856 (5♀♀, 4♂♂)**

E c u a d o r : 5♀♀, 3♂♂, Napo province, 8 km S Tena, Puerto Napo, 400m, 16.-22.II.2002, leg. Ma. Halada; 1♂, Tungurahua province, Banos, 1500m, 14.II.2002, leg. M. Halada.

***Podium rufipes* FABRICIUS, 1804 (2♀♀)**

F r e n c h G u i a n a : 1♀, Matouri, 3.-17.IX.1992, leg. Marek.

N i c a r a g u a : 1♀, Granada, Laguna de apoyo, 20.-22.V.2005, leg. van den Berghe.

*Podium* sp. (1♂)

B r a s i l i a : 1♂, Sao Paulo, leg. ?.

**Genus *Trigonopsis* PERTY, 1833 (2♀♀, 2♂♂)*****Trigonopsis cameroni* (KOHL, 1902) (1♀)**

F r e n c h G u i a n a : 1♀, Relais de Patawa, 35 km S Roura, 17.VI.-16.VII.2000, leg. Kadlec, det. S Kays 2004.

***Trigonopsis intermedia* de SAUSSURE, 1867 (2♂♂)**

F r e n c h G u i a n a : 2♂♂, Relais de Patawa, 35 km S Roura, 17.VI.-16.VII.2000, leg. Kadlec. Compared with male det. Vardy in NHMW.

***Trigonopsis rufiventris* (FABRICIUS, 1804) (1 ♀)**

E c u a d o r : 1 ♀, Napo province, 8 km S Tena, Puerto Napo, 400m, 16.-22.II.2002, leg. Ma. Halada, a small specimen (12 mm).

**Tribe S c e l i p h r i n i ASHMEAD, 1899 (1815)****Genus *Chalybion* DAHLBOM, 1843 (648 ♀ ♀, 908 ♂ ♂)*****Chalybion ammophiloides* HENSEN, 1988 (1 ♀)**

K e n y a : 1 ♀, Voi (Tsavo) env., 22.XI.-2.XII.1996, leg. Mi. Halada.

***Chalybion bengalense* (DAHLBOM, 1845) (74 ♀ ♀, 117 ♂ ♂)**

J a v a : 2 ♀ ♀, 2 ♂ ♂, 14.X.1960, leg. ?; 3 ♀ ♀, 4 ♂ ♂, Bogor, Bot. Garden, 250m, 1956, leg. Hamann; 1 ♀, Bogor, Dj. Tjikuwal, 1957, leg. Hamann, det. v.d.Vecht.

K e n y a : 4 ♀ ♀, 6 ♂ ♂, Voi (Tsavo) env., 22.XI.-2.XII.1996, leg. Mi. Halada; 2 ♀ ♀, 3 ♂ ♂, Voi (Tsavo), 23.III.-4.IV.1997, leg. Ma. Halada; 1 ♂, Voi (Tsavo) env., 8.-18.XI.1996, leg. Mi. Halada.

L a o s : 1 ♀, Khoveom District, VI.1998, leg. ?; 1 ♀, Viang Chan province, Vangviang, N Vientiane, 14.-16.V.1997, leg. Becvar; 1 ♀, 2 ♂ ♂, 35 km NE Vientiane, Lao Pako env., 50m, 18°10'N 102°52'E, 1.-4.VI.2004, leg. Jendek & Šauša; 1 ♀, Khammouan province, Nakai, 500-600m, 17°43'N 105°09'E, VI.2001, leg. Jendek.

M a l a y s i a : 3 ♀ ♀, Pahang Banjaran Benom Mts., K. Ulu Dana 10-15 km SSE, 17.-23.IV.1997, leg. Hanek; 4 ♀ ♀, 8 ♂ ♂, Pahang Banjaran Benom Mts., 1500-1900m, 20 km S Kampong Ulu Dong, 17.-23.IV.1997, leg. Čechovský; 1 ♀, 1 ♂, Perak, 25 km NE Ipoh, 1200m, Banjaran Titi Wangsa Mts., Korbu Mt., 11.-16.I.1999, leg. Čekovský; 1 ♀, Pahang Barian Benom Mts., K. Ulu Dona 15 km SE, IV.1997, leg. Hauck.

M y a n m a r : 1 ♂, Rangood Taukhan, XI.1996, leg. Klichá.

N e p a l : 1 ♀, unreadable, 1999, leg. Flejcha; 2 ♂ ♂, 4 km Sw Gorkna Gandaki d. 450m, 26.V.2001, leg. Kressl; 1 ♂, Narayani Zone, Chitawan Distr. Chitawan Nat. P., Sauraha, Thati Bangh Mara, 200-500m, 17.-21.V.1996, leg. Čechovský; 1 ♂, Gandaki District, Gorkha, 800-1100m, 23.-28.V.2001, leg. Kressl.

I n d i a : 25 ♀ ♀, 26 ♂ ♂, Assam Nameri Nat. Park, Tezpur 60 km N, 150m, VIII.1997, leg. Afonin-Siniaev; 6 ♀ ♀, 35 ♂ ♂, Tamil Nadu, Nilgiri Hills, 11 km SE Kotagiri, 1000m, 11°24'N 76°56'E, Kunchappanai, 3.-15.V.2002, leg. Pacholátko; 3 ♀ ♀, Tamil Nadu, 11 km S Kotagiri, Kurichapani ~ 1100m, 11°24'N 76°56'E, V.2003, leg. Pacholátke; 1 ♀, Maharasha Wai, 700m, 15°55'N 73°54'E, 5.VI.2006, leg. Kejval; 1 ♀, Assam Nameri Nat. Park, Tezpur 60 km N, VII.-VIII.1997; leg. Afonin/Siniaev; 2 ♀ ♀, Uttaranchal st., 13 km NW Ainal, ~950m, 18.VII.2003, leg. Kejval & Tryzna; 1 ♀, 3 ♂ ♂, Madhya Prad, 60 km SW Indore, 500m, 22°20'N 75°26'E, VI.2006, leg. Kejval; 1 ♀, Karnatka, 40 km SW Shimoga, 600m, 13°36.74'N 75°07.98'E, 10.V.2005, leg. M. Halada; 1 ♀, Tamil Nadu, Nilgiris, 15 km SE Kotagiri, Kunchappanai, 900m, 11°22'N 76°56'E, 7.-22.V.2000, leg. Rolčik; 1 ♂, Maharastra Karad, 17°15.3'N 74°10.7'E, 600m, 16.V.2005, leg. M. Halada; 2 ♂ ♂, Kerala, Malampuzha, Palakkad, 10°50.1'N 76°39.1'E, 100m, 28.VI.2005, leg. M. Halada.

I n d o n e s i a : 1 ♂, Manna, Benkulu district, XI.2013, leg. Schachl.

S u m a t r a : 1 ♂, Pematang Siantar, 350m, 2°58'N 99°04'E, 18.II.1994, leg. H. Malicky.

T a i w a n : 3 ♂ ♂, Taitung, Taiyan env., 240m, 23.082°N 121.284°E, 12.V.2012, leg. J. Halada; 10 ♂ ♂, Lanyu Isl., 22.068°N 121.567°E, 10-300m, 15.-17.V.2012, leg. J. Halada.

T h a i l a n d : 2 ♀ ♀, Nan, Mae Charim NP, 18°36'4"N 100°59'2"E 270m, 11.V.2012, leg. E. & J. Hüttinger; 2 ♀ ♀, Nan, 8 km S Mae Charim, 18°38'50"N 100°59'55"E, 260m, 16.V.2012, leg. E. & J. Hüttinger; 2 ♀ ♀, 1 ♂, Nan, außerhalb des Mae Charim NP Einganges, 18°36'0"N 100°58'34"E, 260m, 10.+18.V.2012, leg. E. & J. Hüttinger; 1 ♂, Nan, Ban Namwa, 8 Km S Mae Charim, Flußbett, 18°38'30"N 101°0'40"E, 260m, 18.V.2012, leg. E. & J. Hüttinger.

V i e t n a m : 1 ♀, Saigon, VI.1984, leg. Schachl; 1 ♂, Vung Tao, 19.VIII.1988, leg. Kakourk.

***Chalybion bocandei* (SPINOLA, 1851) (11 ♀ ♀, 6 ♂ ♂)**

B e n i n : 1 ♀, Save env., 16.VI.2001, leg. Kantner; 2 ♀ ♀, 15 km SE Save, 8.-25.IV.2000, leg. J. Halada.

G h a n a : 4 ♂ ♂, Eastern, Senchi (NKpong), 6°12'N 0°04'E, 27.VIII.2012, leg. M. & J. Schwarz; 1 ♂, Volta, New Senchi (NE Kpong), 6°12'N 0°05'E, 2.IX.2012, leg. M. & J. Schwarz; 1 ♀, Volta, New Senchi (NE Kpong), 6°12'N 0°05'E, 26.VIII.2012, leg. M. & J. Schwarz.

G u i n e a : 1 ♀, 1 ♂, N Balaki, 12°17.90'N 11°53.23'W, 29.IV.2004, leg. Ma. Halada; 1 ♀, Madina Salambandi, 11°55.65'N 11°53.85'W, 11.VII.2004, leg. Ma. Halada.

S e n e g a l : 3 ♀ ♀, 10 km E Medina Gounas, 13°08.05'N 13°42.03'W, 25.VI.2004, leg. Ma. Halada; 1 ♀, 10 km SW Medina Gounas, 23.-25.VI.2004, leg. Kudrna; 1 ♀, 15 km E Velingara, 28.VI.2004, leg. M. Halada.

***Chalybion bocandei* ssp. *aeronitens* HENSEN, 1988 (1 ♀, 1 ♂)**

C e n t r a l A f r i c a n R e p u b l i c : 1 ♂, 70 km NNE Bangui, 430m, 04°57'N 18°46'E, 8.IV.2010, leg. J. Halada; 1 ♀, Bangui-Binbo, 380m, 04°20'N 18°32'E, 19.-23.XI.2010, leg. J. Halada.

***Chalybion californicum* (de SAUSSURE, 1867) (5 ♀ ♀, 16 ♂ ♂)**

C a n a d a : 4 ♀ ♀, 13 ♂ ♂, ON, Ottawa City garden, 45°21'N 75°42'W, VII.2009, leg. Masner, mal.trap; 2 ♂ ♂, Ontario, London, VII.2002, leg. Pitelka.

M e x i c o : 1 ♀, Hidalgo Metztitlan, 70 km Pachuca, 1500m, 20.-23.V.1997, leg. Kadlec.

U S A : 1 ♂, Tx, Lamar Co., Camp Maxey, 21.V.-21.VI.2004, leg. Godvin.

***Chalybion clypeatum* (FAIRMAIRE 1858) (16. ♀ ♀, 12 ♂ ♂)**

C e n t r a l A f r i c a n R e p u b l i c : 1 ♀, 45 km N Sibut, 530m 06°06'N 19°08'E, 13.IV.2010, leg. J. Halada; 1 ♀, 50 km W Mbaiki, 500m, 04°10'N 17°42 E, 6.XII.2008, leg. J. Halada.

E t h i o p i a : 3 ♂ ♂, Wellega province, 60 km E Nekemte, 14.IV.2007, leg. J. Halada.

G h a n a : 1 ♀, Greater Accra, Aburi Botanical Garden, 470m, 5.85°N 0.17°W, 1.XI.2011, leg. Pühringer; 1 ♀, Volta Region, Likpe Bakua, 320-340m, 7.16°N 0.59°E, 16.X.2011, leg. Pühringer.

K e n y a : 1 ♂, Massaimara, 1.25°S 35.00°E, 10.-14.VIII.1992, leg. Leonhardsberger.

N i g e r i a : 1 ♂, Gashaka Gumfi NP, 25 km SW Serti env., 7°20'N 11°13'E, 400m, 9.-13.V.2011, leg. J. Halada.

S e n e g a l : 1 ♀, 10 km SW Medina Gounas, 23-25.VI.2004, leg. Kudrna.

S o u t h A f r i c a : 2 ♀ ♀, 3 ♂ ♂, North West province, Bothaville, Vaal river, 16.I.2003, leg. Snížek; 1 ♀, Kw.Natal S, 17 km SE Richmond, 3.II.2000, leg. J. Halada; 1 ♀, North west, 50 km S Kimberley Ritchie, 22.I.2000, leg. J. Halada; 1 ♀, Eastern Cape, 30 km WN Kings W's Town, Rodikrans Damm, 12.XII.2002, leg. Ma. Halada; 1 ♀, Maputoland, SE Ndumo, 24.I.2003, leg. Snížek.

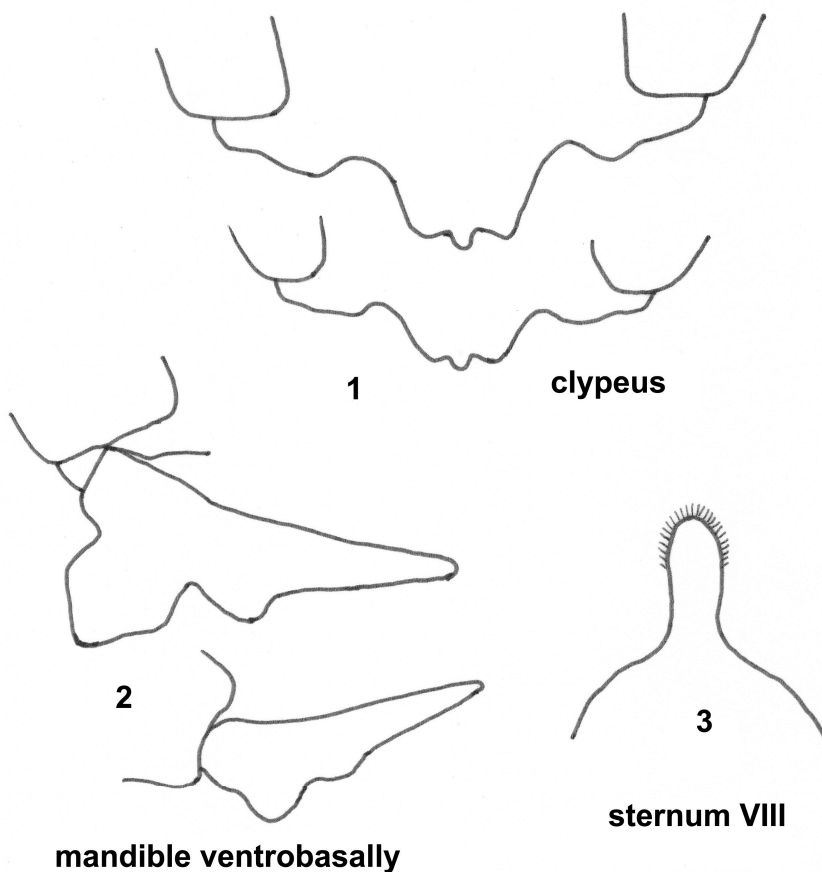
T a n z a n i a : 1 ♀, Shinayanga province, 100 km NWW Kahama, 03°25'S 31°47'E, 1200m, 24.XII.2006, leg. J. Halada; 1 ♀, Mbeya province, Mbeya city, 5.I.2007, leg. J. Halada.

Z a m b i a : 3 ♀ ♀, 100 km W Solwezi, 12°13'S 25°39'E, 1400m, 10.IX.2005, leg. M. Halada; 1 ♂, 40 km W Chingola, 12°27'S 27°35'E, 1200m, 7.XI.2005, leg. M. Halada; 1 ♂, Solwezi env., 1.-8.XII.2002, leg. J. Halada; 1 ♂, 150 km SW Solwezi, 13°02'S 25°45'E, 1300m, 15.XI.2005, leg. M. Halada; 1 ♂, Copperbelt province, 25 km W Chingola, 1600m, 16.I.2006, leg. Kmeko.

***Chalybion dolicho thorax* (KOHL, 1918) (3 ♀♀, 2 ♂♂)**

L a o s : 2 ♀♀, Hua Phan province, Ban Saleui, Phou Pan-Mt., 20°13'30"N 103°59'26"E GPS, 1350-1900m, 14.-18.V.2010, leg. Holzschuh & locals; 1 ♀, Hua Phan province, Ban Saleui (Village), 20°13'30"N 103°59'26"E, 1350-1900m MSL, 20.-31.V.2009, leg. Holzschuh & locals.

Description of the **hitherto unknown male** of *Chalybion dolicho thorax*: Large, body length 22-26.5 mm, length of forewing 15-18 mm. Clypeus distinctly produced and with three teeth, the median narrower than the submedian (Fig. 1). Mandible variably unusually shaped: ventrobasally with one large and one small lobe (Fig. 2). Tyloidea on Flagellomere V – IX. Sternum VIII see Fig. 3. Remaining areas as in female.

***Chalybion dolicho thorax* (KOHL, 1918) ♂**

**Figs 1-3:** *Chalybion dolicho thorax* ♂: (1) Clypeus, (2) mandible ventrobasally, (3) sternum VIII.

L a o s : 1 ♂, Hua Phan province, Phou Pan Mt., Ban Saleui (Village), 20°13'30"N 103°59'26"E. 1350-1900m MSL, 10.-19.V.2009, leg. Holzschuh & locals; 1 ♂, Hua Phan province, Ban Saleui, Phou Pan Mt., 20°13'30"N 103°59'26"E GPS, 1350-1900m, 30.IV.2010, leg. Holzschuh & locals.

***Chalybion femoratum* (FABRICIUS, 1781) (92 ♀ ♀, 142 ♂ ♂)**

A u s t r i a : 1 ♀, Burgenland, Schützengraben, E Minihof-Liebau, 3.VIII.1995, leg. et det. J. Gusenleitner.

B u l g a r i a : 1 ♀, Stara-Zagora, 5.VII.2000, leg. Snižek; 2 ♀ ♀, Sozopol, 8.-22.VIII.1981, leg. Poláček; 1 ♀, 15 km SW Elchovo, Knazevo, 42°06'N 26°30'E, 100m, 19.VI.2008, leg. M. & Z. Halada; 1 ♀, Lozenec, 42°13'N 27°47'E, 15m, 16.VI.2008, leg. M. & Z. Halada; 1 ♀, Sandanski, 25.VII.1966, leg. Kocourek; 1 ♀, Arkutino, VII.1971, leg. Görtler; 1 ♂, Sozopol, 30.VII.1979, leg. Hofer; 1 ♂, Primorsko, 25.VII.1979, leg. Hofer.

C r o a t i a : 2 ♀ ♀, Krk, Otrov, leg. Kocourek; 1 ♀, Krk, leg. Mader; 1 ♀, Istria, Laborika, 20.VII.2002, leg. Ma. Halada; 1 ♂, Krk, Baška, 3.-17.VII.1965, leg. Heinrich; 1 ♀, Istria, Rovinj 2 km SE, 4./1996, leg. et det. J. Gusenleitner; 1 ♀, 2 ♂ ♂, Dalmatien, Hercegovi, VI.1966, leg. Zimmermann; 1 ♀, Krk, Baška, VIII.1970, leg. Heinrich; 1 ♀, 1 ♂, Krk, leg. Schischna & Mader, det. J. Gusenleitner 1990. 1 ♂, Dalmatien, Krk, Baška, 7.-20.VII.1984, leg. Tiefenthaler, det. Riemann; 1 ♂, Split, Orišac, 27.VI.1953, leg. Hamann.

G r e e c e : 1 ♀, Thassos Isl, Trypiti env., 1.-11.VII.2004, leg. Burlisch; 2 ♀ ♀, Pelopones, 40 km N Tripoli, Scotini, 3.VII.1996, leg. Ma. Halada; 1 ♀, Tinos, Panormos, 8.VI.1979, leg. H. Malicky; 1 ♀, Chalkidiki, SE Kassandria, Paliouri env., 6.-11.VI.2013, leg. Snižek; 1 ♀, 1 ♂, Chios, Pyrgi, 8.-30.V.1985, leg. Peraudin; 1 ♂, Samos, Phytagorio, 15 km W Koumaradei, 400m, 37.42°N 26.50°E, 1.-12.VI.1007, leg. Tiefenthaler; 1 ♂, Akrokorinth, 25.V.1964, leg. Aigner; 1 ♀, Korfu, Roda, 20.VI.1998, leg. Bones, det. K. Schmidt 1998; 1 ♀, Delphi, 1.VII.1996, leg. J. Halada, det. Guichard; 1 ♀, Korfu, Roda, 20.VI.1998, leg. Boness, det. Wolf; 1 ♀, Loutraki, 2.VI.1964, leg. Kusdas; 1 ♀, Pelopones, Alt-Korinth, 31.V.1964, leg. Max Schwarz; 2 ♀ ♀, 1 ♂, Pelopones, Alt-Korinth, 3.-5.VI.1960, leg. Kusdas; 1 ♀, Pelopones, Korinth, 24.V.1962m leg. Max Schwarz; 1 ♂, Alt-Korinth, 2.VI.1963, leg. Kusdas; 1 ♂, Acrokorinth, 24.V.1962, leg. Hamann.

I t a l y : 1 ♀, Lago di Bolsena, 5.VII.1972, leg. Pádr.

K y r g y z s t a n : 1 ♀, Dzahal-Abad area, Shamaldy-Say, VI.2000, leg. Gurko; 1 ♀, Osh area, 25 km S Ohs, Aravan, VI.2000, leg. Gurko; 1 ♀, Ferghan, Mt.R. Toskool-Ata, 29.VII.2000, leg. Gurko; 1 ♂, Jalal-Abad, 20 km SSW Ala-Buka, 41°13'08"N 71°23'39"E GPS, 980-1100m, 28.-30.V.2008, leg. E. & J. Hüttinger.

R o m a n i a : 1 ♀, unreadable, 7.VII.1994, leg. ?.

S l o v a k i a : 1 ♀, Štúrovo-Hegyfarok, 3.VII.1993, leg. Batelka.

T a j i k i s t a n : 22 ♀ ♀, 84 ♂ ♂, Tashkent, 40 km vých Čirčik, 4.VII.1981, leg. Kocourek; 2 ♀ ♀, 1 ♂, Vachš, 5.VI.1990, leg. J. & M. Halada; 1 ♀,

T u r k e y : 5 ♀ ♀, 4 ♂ ♂, 25 km E Malatya, Kopeksiz, 8.VII.1997, leg. Ma. Halada; 1 ♀, Province Hakkari, Sat Dag, Shagulut SW Yükekova, 1700m, 4.-8.VIII.1992, leg. Schacht; 1 ♀, Sirmak province, 25 km NW Sirmak, 37.67°N 42.31°E, 1600m, 23.VI.2010, leg. Mi. Halada; 1 ♀, 1 ♂, Akyaka, 37°03'N 28°20'W, 3m, pasture + saltymeadow, IX.2012, leg. Barták; 2 ♀ ♀, 1 ♂, Konya, Mt.Aydos/Eregli, 1600m, 7.VIII.1991, leg. M. Halada; 1 ♀, 1 ♂, Tuzluca/Kars, 1000m, 18.VIII.1991, leg. Halada; 2 ♀ ♀, Urgup (Nevşehir), 4.VII.1997, leg. Ma. Halada; 1 ♀, 1 ♂, 20 km NW Iğdir, 29.VI.1997, leg. Ma. Halada; 1 ♀, vil. Bursa, Kursunlu env., 15.-17.VII.1997, leg. Prudek & Řiha; 1 ♀, 1 ♂, Aciöl, Cardak env., 7.VII.1993, leg. Mi. Halada; 1 ♀, W Mersin, Kuzucubelen, 15.VI.2000, leg. M. Halada; 1 ♂, Denizli, 35 km SSE Denizli, 970m, 37°37'N 29°17'E, 5.VII.2006, leg. M. Halada; 6 ♂ ♂, Burdur, 20 km SW Burdur, 37°37'N 30°09'E, 940m, 7.VII.2006, M. & J. Halada; 6 ♂ ♂, 20 km W Van, 5.VII.1997, leg. Ma. Halada; 1 ♂, Hakkari, Suvani-Halil-Pass, E Beytisebab, 3.VIII.1982, leg. Warnke; 1 ♂, 15 km E Malatya, 27.VI.2000, leg. M. Halada; 1 ♂, Manisa, 15 km SEE Salihli, 38°26'N 28°19'E, 170m, 2.VII.2006, leg. M. Halada; 1 ♂, Seydisehir, Teke Gec., VII.2000, leg. Snižek; 1 ♂, Nearut-Dagi Karedut, 2.VII.1993, leg. M. Halada; 1 ♂, Manisa, 40 km NW Salihli, 38°40'N 27°45'E, 150m, 26.VI.2006, leg. M. Halada; 1 ♂, Denizli, 10 km NE Denizli, 37°56'N 29°07'E, 290m, 4.VII.2006, leg. M. Halada; 1 ♂, 30 km E Tatvan, 7.VII.1997, leg. Ma. Halada; 1 ♀, Sultan Daglari, Yalvac env., 5.VII.1993, leg.



Deneš, det. Guichard; 2♀♀, 2♂♂, Konya, Mt. Aydos/Eregli, 1600m, 7.VIII.1991, leg. M. Halada, det. Guichard; 1♀, E-Anatolien, Gürüh, 10.VII.1988, leg. Wimmer, det. J. Gusenleitner; 1♀, Hakkari, Beytisebab 19 km S, 1200m, 26.VI.1985, leg. Max Schwarz.

**T u r k m e n i s t a n :** 1♀, 2♂♂, Aschabat 15 km N, 25.-31.V.1993, leg. M. Halada; 1♂, Aschabat, 40 km W Firyuza, 6.VI.1993, leg. M. Halada.

**U z b e k i s t a n :** 2♀♀, Hissar N-slope near Tashkurgan, 38°46'N 67°16'E, 2000m, 15.VII.1999, leg. Zonstein; 1♀, 3♂♂, Tashkent env., Iskander, 27.-28.VI.1980, leg. Tyrner; 1♂, 40.10°N 65.35°E, Mts. Muratau, leg. Navoi; 4♀♀, 1♂, Tchatkal Mts., Bashkzyzylsai river canyon, 41°11'N 69°50'E, 1300m, 5.VIII.1999, leg. Makogonova & Zonstein, det. Kazenas & Zonstein; 2♀♀, W-Zeravshan Mts., Dzhindydaria valley, 39°12'N 67°16'E, 1300m, 5.VII.1997, leg. Makogonova, det. Kazenas; 1♂, Hissar Mt.R., N-slope, near Tashkurgan, 38°46'N 67°16'E, 2000m, 15.VII.1999, leg. Makogonova, det. Kazenas 2000; 1♂, Taškent env., Iskander, 27.-28.VI.1980, leg. Tyrner, det. Pádr.

### ***Chalybion flebile* (LEPELETIER de SAINT FARGEAU, 1845) (40♀♀, 62♂♂)**

**E g y p t :** 1♀, Alexandria, VIII.1978, leg. Gottwald; 1♀, Meadi, 6.VIII.1931, leg. Priesner; 2♀♀, 1♂, Cairo, leg. Priesner.

**G r e e c e :** 5♀♀, 1♂, Epidauros, Korfös, 15.-27.IX.1986, leg. Wolf; 3♀♀, 2♂♂, Kletra env., 3.VII.1997, leg. Deneš; 1♀, Alt-Korinth, 24.V.1965, leg. Aigner; 1♀, 3♂♂, Korithos province, ~50 km W Mëgara, 6.-7.VIII.2010, leg. J. Halada; 1♀, 2♂♂, Pelopones, 20 km N Pilos, Marathopoli, 8.VII.1996, leg. Ma. Halada; 1♀, Pelopones, 20 km E Sparta, AG.Angiri, 5.VII.1996, leg. Ma. Halada; 5♂♂, Pelopones, 40 km S Argos, P.Astros, 4.VII.1996, leg. Ma. Halada; 1♂, Karpathos, 200m ob Lefkos, 35.35°N 27.04°E, 19.-24.VI.2010, leg. Tiefenthaler; 1♂, Rhodos, VI.1967, leg. Zimmermann.

**I t a l y :** 2♂♂, Sardinia, Cagliari, 11.VII.1959, leg. Wolf; 1♂, Sicilia, Taormina Naxos, 8.X.1970, leg. Max Schwarz.

**I r a n :** 1♂, Azer. Sh. prov. Sis, 10 km E Shabestar, 38.26°N 45.86°E, 1540m, 19.VII.2010, leg. Mi. Halada.

**J o r d a n :** 2♀♀, N Shuna env., 29.-30.IV.1996, leg. Mi. & Ma. Halada; 2♂♂, Jordan valley, Mubalath, 27.IV.1996, leg. Ma.Halada; 1♂, Zarga-Main, 7.V.1995, leg. Deneš, det. Guichard; 1♂, Jordan valley, S Shuna, 25.-26.1996, leg. Mi. Halada, det. Guichard.

**M o r o c c o :** 1♂, 10 km S Rich, 22.V.1995, leg. Mi. Halada.

**O m a n :** 1♀, Ash Sharqiyah, 25 km SW Sur, Wadi Fulay, 22°25'N 59°21'E, 130m, 16.IV.2013, leg. J. Halada. 7♀♀, 5♂♂, 10 km SE Súr, 14.III.2015, leg. Snižek.

**S p a i n :** 1♂, Alia de las Bojes, Granada, 1200m, 16.V.-8.VI.1983, leg. Peraudin.

**S y r i a :** 1♀, 3♂♂, 60 km S Damascus, Khabab, 14.V.1996, leg. Ma. & Mi. Halada; 6♀♀, 7♂♂, Kafr, Suwayda, 21.VI.2000, leg. M. Halada, det. Ohl; 1♀, 30 km W Damascus, 16.VI.2000, leg. M. Halada.

**T u n i s i a :** 1♀, Tunis, 2.-25.VIII.1972, leg. Bem.

**T u r k e y :** 2♀♀, 25 km W Antalya, 36°13'N 35°51'E, 300m, 27.VI.2001, leg. Straka; 1♀, Province Hakkari, Habur Deeresi-Tal, S Beytisebab, 1100m, 10.VIII.1983, leg. Schacht; 9♂♂, SE Elazig, Hazar Gölü, 29.VI.2000, leg. M. Halada; 4♂♂, Manisia, 15 km SEE Salihli, 38°26'N 28°19'E, 170m, 2.VII.2006, leg. M. Halada; 1♂, Burdur, 5 km NE Yesilova, 37°35'N 29°55'E, 1060m, 6.VII.2006, leg. J. Halada; 1♂, Isparta, Egidir Gölü, 5 km N Akkeçili, 38°06'N 30°46'E, 920m, 10.VII.2006, leg. J. Halada; 1♂, 30 km NW Gaziantep, 2001, leg. Snižek; 1♂, Harbi, Antakya, 17.VI.2000, leg. M. Halada; 1♂, Silifke env., 4.VII.1993, leg. Mi. Halada; 1♀, 1♂, SE Elazig, Hazar Gölü, 29.VI.2000, leg. M. Halada, det. Ohl; 1♂, Hakkari Oramar 10 km NE, 1700m, 29.VI.1985, leg. Max Schwarz.

***Chalybion gracile* HENSEN, 1988 (2 ♀ ♀)**

L a o s : 1 ♀, Vientiane province, 55 km N Vientiane, 18°27'N 102°49'E, 100m, 4.-18.V.2005, leg. Kressl; 1 ♀, Khammouan province, Ban Khoun Ngeun, 18°07'N 104°29'E, 20.-29.V.2004, leg. Jendek & Šauša.

***Chalybion gredleri* (KOHL, 1918) (4 ♀ ♀, 3 ♂ ♂)**

K e n y a : 1 ♀, Coast E Garsen, W Witu, 7.XII.2007, leg. Snížek; 2 ♂ ♂, Mwingi, Kangonde vade, 18.IV.2007, leg. M. Halada; 1 ♂, Voi env., Sagala env., 750m, 13.-19.XI.2011, leg. Snížek.

S o u t h A f r i c a : 1 ♀, Kwazulu Natal province, 20 km N Greytown, 28°58'S 30°34'E, 1140m, 18.I.2010, leg. J. Halada.

Z a m b i a : 1 ♀, 20 km SE Mwinilunga, 8.I.2003, leg. J. Halada; 2 ♀ ♀, 150 km SW Solwezi, 13°02'S 25°45'E, 1300m, 15.XI.2005, leg. M. Halada.

***Chalybion heinii* (KOHL, 1906) (4 ♀ ♀, 3 ♂ ♂)**

K e n y a : 1 ♀, Lake Baringo, 07.50°N 36.05°E, 1000m, 31.VII.-1.VIII.1939, leg. Leonhardsberger; 1 ♀, Lake Baringo, 0.44°N 36.01°E, 5.-6.VIII.1992, leg. Leonhardsberger.

G u i n e a : Variation: flagellum of ♂ with placoids on third to ninth segment: 1 ♂, N Balaki, 12°17.90'N 11°53.23'W, 29.VI.2004, leg. Ma. Halada.

Y e m e n : 1 ♀, Lawdar, NE Aden, 13°53'N 45°48'E, 28.X.2005, leg. J. Halada; 1 ♀, 1 ♂, 20 km STaizz, 1200m, 13°30'N 43°57'E, 23.X.2005, leg. J. Halada; 1 ♂, Wadi Aniz, SSW Sana, 1520m 14°60'N (sic!) 44°09'E, 7.X.2005, leg. J. Halada.

***Chalybion incisum* HENSEN, 1988 (2 ♀ ♀)**

M o z a m b i q u e : 1 ♀, 15 km SE Save, 21°13'S 34°40'E, 65m, 18.-19.XII.2005, leg. Kadlecová.

T a n z a n i a : 1 ♀, Pwani province, 15 km W Kibiti, 07°47'S 38°49'E, 100m, 15.I.2007, leg. Kadlecová.

***Chalybion japonicum* (GRIBODO, 1883) (76 ♀ ♀, 123 ♂ ♂)**

C h i n a : 1 ♀, Wufu, W Beijing, 15.-20.VII.1992, leg. Soldán; 1 ♂, Xienxian, 34.8°N 111.6°E, Zhongtiao Shan mt., 22.-24.V.1996, leg. J. Halada.

J a p a n : 1 ♀, Akatani, Nigata prf., 28.V.1966, leg. Itami; 1 ♀, Niicyta, Shibata City, 18.V.1965, leg. Itami; 1 ♀, 2 ♂ ♂, Kamakura, 2.VII.1951, leg. Nagase; 1 ♀, 1 ♂, Hattoni, Osaka, coll. Kocourek; 1 ♂, Sata (Osumi), Odomari-Hammajiri-Magome, 30.V.1952, leg. Esaki & Hirashima.

L a o s : 52 ♀ ♀, 96 ♂ ♂, Province Hua Phan, Phou Pan, env. Ban Saleui, 20°13'30"N 103°59'26"E, 1350-1900m, 2009–2013, leg. Holzschuh & locals; 2 ♀ ♀, 1 ♂, Hua Phan province, Mt. Phu Pane, ~1500m, 20°12'N 103°59'E, 10.-22.V.2011, leg. Jakl; 1 ♀, Khammouan province, Nakai, 500-600m, 17°43'N 105°09'E, VI.2001, leg. Jendek.

T a i w a n : 9 ♀ ♀, 8 ♂ ♂, Taitung, Taiyan env., 240m, 23.082°N 102.284°E, 12.V.2012, leg. J. Halada; 1 ♀, 3 ♂ ♂, Yilan province, Ssuchi (Siji) env., 24°51'N 121°44'E, 675m, 26.V.2012, leg. J. Halada; 6 ♀ ♀, 7 ♂ ♂, Taoyuan province, Mingehih env., 1975m, 24°05'N 121°42'E, 9.V.2012, leg. J. Halada; 2 ♀ ♀, Lanyu Isl., 22.068°N 121.567°E, 10-300m, 15.-17.V.2012, leg. J. Halada; 1 ♂, Nantou province, Sun Moon lake env., 23.82°N 120.94°E, 800m, 25.V.2012, leg. J. Halada.

***Chalybion klapperichi* (BALTHASAR, 1957) (1 ♀, 1 ♂)**

S y r i a : 1 ♂, Jisr ash Shugur, 26.V.1996, leg. Mi. Halada.

T u r k e y : 1 ♀, Denizli, 35 km SSE Denizli, 37°37'N 29°17'E, 970m, 5.VII.2006, leg. J. Halada.

**Note:** The male of *Chalybion klapperichi* is characterized by a propodeal dorsum longitudinally striate on posterior half (see STANDFUSS & STANDFUSS 2006:311, Fig. 1), the eight sternite has a triangular process and the fourth to ninth flagellomere have tyloidea.

***Chalybion laevigatum* (KOHLE, 1888) (59 ♀♀, 76 ♂♂)**

**Kenya:** 4 ♀♀, 8 ♂♂, Mwingi, Kangonde wadi, 18.IV.2007, leg. M. Halada; 2 ♂♂, Voi (Tsavo) env., 8.-18.XI.1996, leg. M. Halada; 2 ♂♂, Voi (Tsavo) env., 22.XI.-2.XII.1996, leg. M. Halada; 1 ♂, Voi (Tsavo), 8.-18.XI.1996, leg. Snižek; 1 ♂, W Mwingi 6.IV.2007, leg. M. Halada.

**Malawi:** 1 ♀, Nkhotakota, Ike Malawi, 21.I.2002, leg. J. Halada; 1 ♀, Mulanje Mts. env., 23.-26.XII.2001, leg. J. Halada; 1 ♂, Nkhata Bay, lake Malawi, 1.I.2001, leg. J. Halada.

**Mozambique:** 5 ♀♀, Niassa Cuamba Mituque, Centro Paternal MT, 3.-17.IV.2012, leg. Olmi; 2 ♀♀, 55 km NW Chimoio, 13°44'S 33°15'E, 550m, 28.XI.2005, leg. J. Halada; 2 ♂♂, 35 km SW Chimoio, 19°08'S 33°09'E, 700m, 14.XII.2005, leg. Kadlecova; 1 ♂, 15 km SSE Manje, 15°29'S 33°16'E, 530m 2.-4.XII.2005, leg. J. Halada; 1 ♂, 15 km SE Save, 21°13'S 34°40'E, 65m, 18.-19.XII.2005, leg. J. Halada.

**Namibia:** 3 ♂♂, 25 km N Windhoek, 12.I.1993, leg. J. Gusenleitner & Max Schwarz.

**South Africa:** 5 ♀♀, 3 ♂♂, Maputoland, Tembe Elephant Park env., (Jozini), 22.I.2003, leg. Křivan & Snižek; 1 ♀, Krüger-Park, Punda Maria, 7.II.1988, leg. H. Malicky; 1 ♀, KwazaZulu Natal Mbazwana, 6.XII.2002, leg. M. Halada; 1 ♀, North West, 20 km W Bothaville, Klerksdorp Vaal river, 31.I.2001, leg. Snižek; 1 ♀, 1 ♂, Mpumalanga, 30 km NE Lydenbrug NR., Ohrig, 22.-25.XI.2003, leg. J. Halada; 1 ♀, 3 ♂♂, Limpopo province, 35 km W Hoedspruit, 24°23'S 30°40'E, 470m, 19.XII.2009, leg. J. Halada; 1 ♀, Eastern Cape, 40 km S Umbata, 1.II.2000, leg. J. Halada; 2 ♀♀, 5 ♂♂, KwaZulu Natal Tembe Elephant Park, 50m, Ndumo, 27°02'S 32°23'E, 4.I.2008, leg. M. Halada; 2 ♀♀, 2 ♂♂, KwaZulu Natal Elephant Park, 50m, Ndumo, 27°02'S 32°23'E, 30.XII.2007, leg. M. Halada; 1 ♀, KwazaZulu Natal Tembe Elephant Park, 30.XI.2002, leg. M. Halada; 1 ♀, North West, W Bothaville, Vaal river, 1250m, 27°24'S 26°24'E, 23.XII.2007, leg. M. Halada; 3 ♂♂, KwaZulu Natal Tembe Elephant Park, Ndumo, 50m, 27°02'S 32°23'E, 10.I.2008, leg. M. Halada; 2 ♂♂, Maputoland, SW Emanguzi, 29.I.2003, leg. Snižek; 3 ♂♂, West Cape, NEN Clanvilliam Dongbos, 11.X.1999, leg. M. Halada; 1 ♀, NC Limpopo Modimole, 30.XII.2005, leg. Snižek.

**Tanzania:** 1 ♂, Pwani province, 15 km E Utete, 08°03'S 38°53'E, 75m, 16.I.2007, leg. J. Halada.

**Zambia:** 2 ♀♀, 1 ♂, 95 km NW Mpika, 11°06'S 31°14'E, 1500m, 27.XI.2005, leg. M. Halada; 2 ♀♀, 1 ♂, Solwezi env., 1.-3.XII.2002, leg. J. Halada; 1 ♀, 50 km W Chingola, 1.-2.I.2003, leg. J. Halada; 2 ♀♀, 60 km W Solwezi, 4.-6.I.2003, leg. J. Halada; 2 ♀♀, 150 km SW Solwezi, 13°02'S 25°45'E, 1300m, 15.XI.2005, leg. M. Halada; 4 ♀♀, 5 ♂♂, 100 km W Solwezi, 12°13'S 25°39'E, 1400m, 10.XI.2005, leg. M. Halada; 1 ♀, 45 km SE Kitwe, 12.-15.I.2003, leg. J. Halada; 1 ♀, 70 km NE Kapiri Mposhi, 34°41'S 29°18'E, 1250m, leg. M. Halada; 1 ♀, 1 ♂, 140 km NE Kapiri Mposhi, 13°31'S 29°41'48"E, 1500m, 23.XI.2005, leg. M. Halada; 1 ♀, Mkushi env., 16.-18.XII.2004, leg. Snižek; 1 ♀, 150 km S Mwinilunga, 13°11'S 24°15'E, 1100m, 18.X.2008, leg. M. Halada; 1 ♀, 168 km E Mwinilunga, Lumwana East env., 7.XII.2004, leg. Snižek; 1 ♀, 70 km S Mpika, 12°18'S 31°07'E, 1500m, 25.XI.2005, leg. M. Halada; 1 ♀, 150 km W Solwezi Ntambu, 12°18'S 25°10'E, 1350m, 11.XI.2005, leg. M. Halada; 1 ♀, 50 km E Mwinilunga, 11°43'S 24°47'E, 1400m, 2.IX.2008, leg. M. Halada; 1 ♂, 50 km E Mwinilunga, 11°43'S 24°47'E, 1400m, 18.X.2008, leg. M. Halada; 5 ♂♂, 40 km W Chingola, 12°27'S 27°35'E, 1200m, 7.XI.2005, leg. M. Halada; 2 ♂♂, E Mutumbwe, NW Kasempa, 15.XI.2005, leg. Snižek; 1 ♂, 60 km NW Kapiri Mposhi, 8.XII.2002, leg. J. Halada.

**Zimbabwe:** 1 ♀, (ZW) Dete (Hwange NP), 11.XI.1997, leg. Plass; 1 ♀, Chirinda Forest Land, Mt. Selinda, 24.I.1998, leg. M. Halada; 1 ♀, 1 ♂, Khami Ruins Bulawayo, 28.I.1998, leg. M. Halada; 1 ♀, 1 ♂, Bubui river, Bubi, 8.XII.1998, leg. M. Halada; 2 ♀♀, 1 ♂, 100 km S Bulawayo, Antelope, 6.XII.1998, leg. M. Halada; 1 ♀, 7 ♂♂, Mavhuradonha, Šaf.A., 15 km SE Muzarabani, 17.XII.1998, leg. M. Halada; 2 ♂♂, 20 km W Gwanda, 6.XII.1998, leg. J. Snižek; 2 ♂♂, 80 km E Masvingo Nyika, 12.XII.1998, leg. M. Halada; 1 ♀, Bulawayo, Shangani, Naletale ruins env., 23.XI.2014, leg. Snižek; 1 ♀, SE Hwange, 40 km NW Lupane, 15.XI.2014, leg. Snižek.

***Chalybion madecassum* (GRIBODO, 1883) (10 ♀ ♀, 7 ♂ ♂)**

**M a d e g a s c a r :** 2 ♂ ♂, Nosy BE, Special reservation "Locoba", 13.-16.XII.2003, leg. Dolin & Andreeva; 1 ♂, Cap Eat. Nat. Park "Masuala", 27.-30.XII.2003, leg. Dolin & Andreev; 7 ♀ ♀, 3 ♂ ♂, Andasibe env., 25.XI.1999, leg. J. Halada; 1 ♀, Andasibe Nat. Park "Perinot" light, 10.-14.I.2004, leg. Dolin & Andreev.

**S e y c h e l l e n :** 2 ♀ ♀, 1 ♂, Mahé Mount Fleuri, 10m, 4°38'S 55°27'E GPS, 1.-30.IX.1998, leg. Malicky.

***Chalybion minus* (de BEAUMONT, 1965) (13 ♀ ♀, 13 ♂ ♂)**

**G r e e c e :** 2 ♀ ♀, 1 ♂, Crete, Sitia, 18.+20.V.1963, leg. Max Schwarz (Paratypes); 1 ♂, Crete, Sitia, 19.V.1963, leg. K. Kusdas (Paratype).

**T u r k e y :** 4 ♀ ♀, 8 ♂ ♂, Denizli, 10 km NE Denizli, 37°56'N 29°07'E, 290m, 4.VII.2006, leg. J. Halada; 3 ♀ ♀, 2 ♂ ♂, Denizli, 35 km SSE Denizli, 37°37'N 29°17'E, 970m, 5.VII.2006, leg. J. & M. Halada; 1 ♀, 15 km E Malatya, 27.VI.2000, leg. M. Halada; 1 ♀, 50 km NE Antalya, 37°07'N 35°13'E, 18.-19.VI.2001, leg. Straka; 1 ♂, SE Elazig, Hazar Gölü, 29.VI.2000, leg. M. Halada.

**N o t e :** The Holotype ♀ of *Sceliphron* (*Chalybion*) *minus* de Beaumont, 1965 (Greece, Island of Crete: Sitia) ex Max Schwarz collection is now in the Biologiezentrum Linz collection.

***Chalybion mochii* HENSEN, 1988 (1 ♀, 7 ♂ ♂)**

**K e n y a :** 2 ♂ ♂, Mwingi, Kangonde vadi, 18.IV.2007, leg. M. Halada; 2 ♂ ♂, Voi (Tsavo), 23.III.-4.IV.1997, leg. Ma. Halada; 2 ♂ ♂, Voi (Tsavo) env., 22.XI.-2.XII.1996, leg. Mi. Halada; 1 ♂, E 729, Sosoma, 202 km E Thika, 20.XI.2007, leg. Snížek.

Description of the **hitherto unknown female** of *Chalybion mochii* HENSEN:

Body length 19 mm, length of forewing 12.5 mm. Body blue, legs slightly violaceous. Wings light brownish hyaline, apical margins infuscated. Head, Thorax and propodeum with conspicuous white tomentum like in male. Clypeus with five distinct teeth. Anterior slope of pronotal collar nearly straight, with distinct median impression. Metapleuron not sunk below level of mesopleuron and propodeum, but forming a continuous smooth surface with these parts; propodeum in dorsal view longer than thorax. Punctuation of pronotum and scutum obsolete, meso- and metapleuron sparsely finely punctate; propodeum finely sparsely punctate, transverse striae on dorsum weak. Claws on hindtarsi without inner tooth. Petiolus as long as hind basitarsus.

The female of *Chalybion mochii* shares with *Chalybion laevigatum* the weak or obsolete punctuation on pronotal collar and scutum and the claws of hind tarsi without basal tooth, but differs in having wings light brownish hyaline and head, thorax and propodeum with conspicuous white tomentum (*Chalybion laevigatum* has dark-brown wings with violaceous reflections and no conspicuous white tomentum on head, thorax and propodeum).

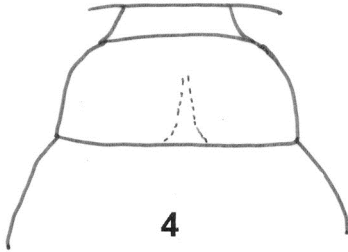
**M a t e r i a l e x a m i n e d :** 1 ♀, SE Kenya, S Mackinnon Road, 13.IV.2007, leg. M. Halada.

***Chalybion ohli* DOLLFUSS nov. sp. (3 ♂ ♂)**

**R e c o r d s :** Holotype: ♂, Madagascar, Andasibe env., 25.XI.1999, leg. J. Halada. Paratypes: 2 ♂ ♂, same locality.

**N a m e d e r i v a t i o n :** In honor of the outstanding specialist of Sphecidae Dr. Michael Ohl, Museum für Naturkunde Berlin, Germany.

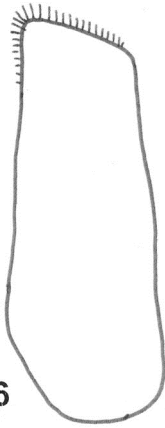
***Chalybion ohli* DOLLFUSS nov.sp. ♂**



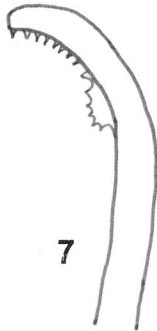
4  
pronotal collar dorsal



5  
pronotal collar lateral



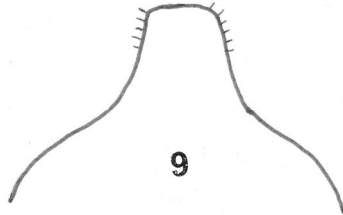
6  
gonostyle lateral



7  
penis valve lateral



8  
clypeus



9  
sternum VIII

***Chalybion sommereni* (R. TURNER, 1920) ♂**



10  
sternum VIII



11  
penis valve lateral

**Figs 4-11:** *Chalybion ohli* ♂: (4) pronotal collar dorsal, (5) pronotal collar lateral, (6) gonostyle lateral, (7) penis valve lateral, (8) clypeus, (9) sternum VIII. *Chalybion sommereni* ♂: (10) sternum VIII, (11) penis valve lateral.

**Recognition:** Tarsi with plantulae; erect setae on head and mesothorax white. Supra-antennal plate ventrally not delimited by a transverse carina which runs along and between the antennal sockets. Tarsal claws without basal tooth. Eight sternum truncate (Fig. 9) and penis valve with teeth along ventral margin (Fig. 7). The male of *Ch. ohli* differs from *Ch. madegassum* in having the supra-antennal plate ventrally not delimited by a transverse carina and the eight sternum is truncate (Fig. 9) (*Ch. madecassum* has the supra-antennal plate ventrally delimited by a transverse carina and the sternum VIII is slender with an apical process (HENSEN 1988: 26, Fig. 37)). The male of *Ch. ohli* differs from *Ch. bonneti* in having the sternum VIII not so broadly truncate (Fig. 9) and the penis valve has teeth along ventral margin (Fig. 7) (*Ch. bonneti* has the sternum VIII more broadly truncate (HENSEN 1988: 26, Fig. 33) and the penis valve has no teeth along ventral margin).

**Description:** Body length 16.5-17.5 mm, length of forewing 12-13 mm. Integument blue, mandible reddish-brown, antennae black, wings subhyaline. Occipital carina with complete circle, separated from hypostomal carina. Clypeus with three lobes (Fig. 8), medial lobe distinctly broader than lateral ones. Antennae with tyloidea on flagellomere VII – IX. Frons densely coarsely punctate, supra-antennal plate ventrally not delimited by transverse carina. Pronotal collar coarsely punctate, medially impressed, short (Figs 4, 5). Scutum, scutellum, metanotum, mesopleuron and metapleuron coarsely densely punctate. Metapleuron sunken below level of mesopleuron and side of propodeum. Propodeal dorsum coarsely punctate to reticulate. Tarsal claws without basal tooth, tarsi with plantulae. Petiole as long as hindbasitarsus, slightly curved. Sternum VIII truncate (Fig. 9), penis valve with teeth along ventral margin (Fig. 7). Gonostyle in lateral view see Fig. 6.

♀ unknown.

### ***Chalybion omissum* (KOHL, 1889) (85 ♀ ♀, 109 ♂ ♂)**

**Bosnia:** 4 ♀ ♀, 1 ♂, Republica Srpska, Radonići, VI.1977, leg. Deneš.

**Bulgaria:** 1 ♀, Pobitite kamani, 11.VI.1985.

**Croatia:** 1 ♀, Krk, leg. Mader; 1 ♀, Krk, VI.1987, leg. Heinrich; 1 ♀, Krk, Baska, 8.-30.VI.1973, leg. Heinrich; 1 ♀, Dalmatia, E Denj, Jurjevo, 200m, 28.VI.1979, leg. Mauerlif; 1 ♀, Makarska, 8.VI.1970, leg. Deneš; 4 ♀ ♀, 3 ♂ ♂, 40 km N Split, 43°47.9'N 16°34.1'E, 370m, 29.V.2005, leg. M. & Z. Halada; 3 ♀ ♀ Dubrovnik, VI.1977, leg. Deneš; 2 ♀ ♀, 1 ♂, Insel Krk, leg. Mader, det. J. Gusenleitner 1090; 1 ♂, Dalmatia, Krk, Baška, 7.-20.VII.1984, leg. Tiefenthaler, det. Riemann 1991; 1 ♀, Insel Krk, leg. Bauer; 1 ♀, 1 ♂, Insel Hvar, 23.VI.1962, leg. Kusdas; 1 ♀, Insel Hvar, 24.VI.1962, leg. Schmied; 1 ♂, Insel Krk, Baska, 10.-22.VI.1986, leg. J. Schmidt.

**Greece:** 13 ♀ ♀, 17 ♂ ♂, Delphi, 9.V.2005, leg. J. Halada; 3 ♀ ♀, 1 ♂, Samos, Pythagorio, Umg. Hotel Maritsa Bay, 37.42°N 26.57°E, 18.-31.V.2006, leg. Tiefenthaler; 1 ♀, Samos, Pythagorio, 15 km W Koumaradei, 400m, 37.42°N 26.50°E, 11.VI.-12.VII.2007, leg. Tiefenthaler; 1 ♀, Samos, Ormos Makro Seitani, 3m, Sandbucht, 37°46.05'N 26°38.15'E, leg. Ebmer; 1 ♀, Rhodos, Kolymbia, 36.14°N 29.09°E, 24.-31.V.2013, leg. Tiefenthaler; 1 ♀, Chios, Pyrgi, 8.-30.V.1985, leg. Perraudin; 1 ♀, Temby Kanyon, 10 km Omolio, 7.VI.2005, leg. Šarovec; 1 ♀, 6 ♂ ♂, Parga env., 4.-14.VI.1996, leg. Kadlec; 1 ♀, 4 ♂ ♂, Ipiros, Ori Pargás Sivota, V.2000, leg. Kantner; 1 ♀, Pelopones, 40 km N Tripoli Scotini, 3.VII.1996, leg. Ma. Halada; 1 ♀, 40 km S Igomienitsa, 16.V.2005, leg. J. Halada & Kadlecova; 1 ♀, 1 ♂, Pelopones, Menalo Mts., Vitina env., V.2007, leg. Simandl; 1 ♂, Pelopones, Arkadien, Pyrgoudi env., SE Poulithra, 37°05'59"N 22°52'11"E, 950m MSL, 8.V.2005, leg. H. & R. Rausch; 1 ♂, Preveca env., 25.V.1997, leg. Deneš; 3 ♂ ♂, Akrokorinth, 25.V.1964, leg. Aigner; 1 ♂, Pelopones, Gythion, 26.V.1979, leg. Hladilovi; 1 ♂, Preveca, St. Thomas, 10.-17.VI.1991, leg. Dvořák; 1 ♂, Thessalia, Parkadon, 5.VI.1992, leg.

Cerný; 1 ♀, Samos, Drakei, 11.VI.2000, leg. Zarre, det. Ohl; 1 ♀, Ipiros, Ori Pargas Sivota, V.2000, leg. Kantner, det Ohl; 1 ♂, A-Korinth, 23.IV.1987, leg. J. Schmidt, det. J. Gusenleitner 1990; 1 ♂, Prov. Preveza SB, 2 km S Kerasona, 140m, 9.-11.VI.1988, leg. Tiefenthaler, det. K. Schmidt; 1 ♂, Pelopones, Lakonien, Halbinsel Mani, Loukádika, 36°39'N 22°28'E, 220-350m, 12.V.1992, leg. Rausch, det. Guichard; 1 ♂, Pelopones, Zachlorou, Kalavr., 23.-28.VI.1958, leg. Klimesch, det. J. Gusenleitner 1990; 5 ♀ ♀, 4 ♂ ♂, Pelopones, Alt-Korinth 5.-31.V.1964, leg. Max Schwarz; 1 ♀, Pelopones, Alt-Korinth 19.V.1964, leg. Kusdas; 2 ♀ ♀, 4 ♂ ♂, Zachlorou, Pelopones, 26.-29.V.1964, leg. Max Schwarz; 1 ♀, Pelopones, Kalavryta, 31.V.1962, leg. Max Schwarz; 1 ♀, 2 ♂ ♂, Kalamata, 11.-14.V.1969, leg. Kusdas; 1 ♀, Kalavryta, Pelopones, 7.VI.1960, leg. Kusdas; 3 ♂ ♂, Zachlorou, 27.V.1964, leg. Kusdas; 7 ♂ ♂, Pelopones, Kalamata, 11.-15.V.1964, leg. Max Schwarz; 1 ♂, Pelopones, Korinth, 23.V.1962, leg. Max Schwarz; 1 ♂, Loutraki, 29.V.1963, leg. Max Schwarz; 1 ♂, Pelopones, Mega Spileon, 23.V.1960, leg. Kusdas; 1 ♀, 2 ♂ ♂, Pelopones, Zachlorou, 27.-30.V.1962, leg. Hamann;

I t a l y : 1 ♂, Triest Conconello env., 11.VI.1957, leg. Kusdas.

M a c e d o n i a : 1 ♂, Petrovac, 18.VI.1957, leg. Hladil; 1 ♂, Petrovac, 1867, Kladil; 1 ♀, Matka, Treska Schlucht, 23.-27.VI.1955, leg. Klimesch, det J. Gusenleitner 1990; 1 ♀, 30 km E Pletvar-P, 200m, 15.VI.1990, leg. Tiefenthaler, det Riemann 1991.

T u r k e y : 3 ♀ ♀, 8 ♂ ♂, Akyaka env., 40m, 37°03'N 28°19'E, 16.-27.V.2011, leg. Barták & Kubik; 5 ♀ ♀, 30 km N Erdemli Aslanli, 17.VI.1998, leg. Ma. Halada; 3 ♀ ♀, 8 ♂ ♂, Mugla University campus, PT+SW, 650m, 18.-21.V.2011, leg. Barták & Kubik; 2 ♀ ♀, Mugla University campus, 700m, 37°09'N 28°22'E, 1.V.-17.VI.2013, leg. Barták & Kubik; 1 ♀, Denizli, 35 km SSE Denizli, 37°37'N 29°17'E, 970m, 5.VII.2006, leg. M. Halada; 1 ♀, 20 km E Alanya, 16.VI.1997, leg. Ma. Halada; 1 ♀, Burdur, 28 km SSE Burdur, 37°40'N 30°28'E, 1350m, 8.VII.2006, leg. M. Halada; 1 ♀, Izmir, Dikili env., 19.VI.1998, leg. J. Halada; 1 ♀, vil. Eskisehir, Sakari Ilica near Gümele, 6.-9.VII.1997, leg. Průdek & Ríha; 1 ♀, 40 km E Mut Cornelek, 18.VI.1997, leg. Ma. Halada; 1 ♂, Mugla University campus, 700m, 37°09'N 28°22'E, SW+PT, 1.-10.V.2013, leg. Barták1; 1 ♂, Antalya province, Alanya, 50-250m, 11.-19.V.2007, leg. Kresl; 1 ♂, 60 km E Mut Kirobasi, 19.VI.1997, leg. Ma. Halada; 1 ♂, Seydisehir, Teke Gec., VII.2000, leg. Snižek; 1 ♂, Van Town bor., 28.VI.1993, leg. Mi. Halada; 1 ♂, Uzuncaburc, 30 km N Silifke, 28.V.1996, leg. Mi. Halada; 1 ♂, Kuzucebelen Mersin, 28.V.1998, leg. Ma. Halada; 1 ♀, Seydisehir, Teke Gec., VII.2000, leg. Snižek, det. Ohl; ♂, Gevas/Van Gölü, 29.VI.1993, leg. Deneš, det. Guichard; 1 ♀, Izmir, Dikili env., 19.VI.1998, leg. J. Halada; 1 ♂, Sirnak province, 25 km NW Sirnak, 37.67°N 42.31°E, 1600m, 23.VI.2010, leg. Mi. Halada; 1 ♂, Eceabat, 29.V.1966, leg. Kusdas; 1 ♂, Hakkari Oramar 10 km NE, 1700m, 29.VI.1985, leg. Max Schwarz.

### ***Chalybion parvulum* HENSEN, 1988, (1 ♂)**

K e n y a : 1 ♂, W Mwingi, 6.IV.2007, leg. M. Halada.

### ***Chalybion schulthessirechbergeri* (KOHL 1918) (1 ♀, 1 ♂)**

C e n t r a l A f r i c a n R e p u b l i c : 1 ♂, 45 km E Nola (GPS) 03°32'N 16°26'E, 8.VI.2009, leg. J. Halada.

N a m i b i a : 1 ♀, 15 km E Swakopmund, 4.II.1993, leg. Max Schwarz.

### ***Chalybion sommereni* (R. TURNER, 1920) (1 ♀, 6 ♂ ♂)**

K e n y a : 1 ♀, (Tsavo), Tai Hills, Wundanyi, 19-21.XI.1996, leg. Mi. Halada.

Description of the **hitherto unknown male** of *Chalybion sommereni*: Body length 13.0-16.5 mm, length of forewing 9.5-10.5 mm. Body bright blue; proximal four antennal segments, tegulae and legs (except coxa) bright ferruginous; wings brownish hyaline, apically brown. Long erect setae of head, thorax and propodeum white. Face and pronotal lobe densely, mesopleuron sparsely covered with appressed silvery setae. Pronotum and scutum sparsely finely punctate; meso- and metapleuron more densely

punctate. Propodeum enclosure densely punctate and with transverse striae. Claws of hind tarsi without inner subbasal tooth; antenna with tyloidea on eight and ninth flagellomere. Sternum VIII with triangular apical process (Fig. 10); penis valve in lateral view Fig. 11.

The male of *Chalybion sommereni* differs from *Chalybion laevigatum* in having ferruginous legs except coxa (*Chalybion laevigatum* has all legs black to violaceous).

**K e n y a** : 5♂♂, (Tsavo) Tai Hills, Wundanyi, 19.-21.XI.1996, leg. Mi. Halada; 1♂, Taita Hills, Wundanyi, 18.-22.III.1997, leg. Ma. Halada.

***Chalybion spinolae* (LEPELETIER de SAINT FARGEAU 1845) (23♀♀, 50♂♂)**

**B o t s w a n a** : 1♂, Nata env., 9.-14.I.1994, leg. Snižek.

**E t h i o p i a** : 1♀, 40 km W Konso, 05°19'N 37°04'E, 600m, 14.V.2015, leg. J. Halada; 2♂♂, Oromia State, Borena region (alt. 1470m), 10 km SE Negele env., 05°18'13"N 39°38'37"E, 19.XI.2014, leg. Kučera.

**K e n y a** : 5♂♂, Voi (Tsavo) env. 8.-18.XI.1996, leg. Mi. Halada; 3♂♂, Taita Hills, Wundanyi, 18.-22.III.1997, leg. Ma. Halada; 1♂, E Mwingi, 14.V.2007, leg. M. Halada; 2♂♂, Voi, 10.XII.1999, leg. Snižek; 2♀♀, Mwingi, Kangonde vadi, 18.IV.2007, leg. Mi. Halada; 1♀, SamburuNat. Park, 00.50°N 37.50°E, 900m, 19.-22.VII.1993, leg. Leonhardsberger; 1♀, Ngon Hills, 8 km S Kiserian, 1°27'S 36°28'E, 17.IV.2006, leg. Jendek; 1♀, 1♂, Voi (Tsavo), 13.-17.XII.1997, leg. Snižek; 1♀, 9♂♂, Voi (Tsavo), 22.XI.-2.XII.1996, leg. Mi. Halada; 1♀, Taita Hills, Voi river, 14.IV.2007, leg. M. Halada.

**M o z a m b i q u e** : 1♀, Manica province, 65 km W Chimoio, 10.-11.XII.2003, leg. J. Halada; 1♀, Manica province, 45 km NW Cimoio, 12.-20.XII.2003, leg. J. Halada; 1♀, 3♂♂, 35 km SW Chimoio, 09°08'S 33°09'E, 700m, 14.XII.2005, leg. J. Halada.

**S o u t h A f r i c a** : 1♀, KwaZulu Natal S, 17 km SE Richmond, 3.II.2000, leg. J. Halada; 1♀, East Cape, Sneeuberg, N Graff Reinet, Lootsberg pass, 1446m, 26.XII.2007, leg. Snižek; 1♀, 2♂♂, West Cape, Klein Karoo Langberg, Grotriver, 15.XII.2002, leg. Ma. Halada; 1♀, KwaZulu Natal, 20 km S Bergville, 5.II.2001, leg. Snižek; 2♂♂, West Cape, Barrydale, 16.XII.2002, leg. Snižek; 1♂, Mpumalanga, 30 km NE Lydenburg NR. Ohrig, 9.-12.I.2004, leg. J. Halada; 3♂♂, West Cape, Klein Karoo, Grotriver, Langberg, 24.XI.2002, leg. Ma. Halada; 1♂, Mpumalanga, 40 km SW Komalipoor, 1.-2.I.2004, leg. J. Halada; 1♂, North West province, Wryburg env., 14.I.2001, leg. Snižek.

**U g a n d a** : 1♂, 1966, leg. Hamann.

**Z a m b i a** : 3♀♀, 2♂♂, 150 km SW Solwezi, 13°02'S 25°45'E, 1300m, 15.XI.2005, leg. M. Halada; 2♀♀, 2♂♂, 140 km NE Kapiri Moshi, 13°31'S 29°48'E, 1500m, 23.XI.2005, leg. M. Halada; 1♀, Coperbelt province, 85 km W Chingola, 16.I.2006, leg. Kmeco; 1♀, NW Kasempa, 13°06'S 25°14'E, 1200m, 5.XI.2008, leg. M. Halada; 1♀, 15 km S Kapiri Moshi, 16.-17.I.2003, leg. J. Halada; 4♂♂, 40 km W Chingola, 12°27'S 27°35'E, 1200m, 7.XI.2005, leg. M. Halada; 1♂, Solvezi env., 1.-3.XII.2002, leg. J. Halada; 1♂, 100 km W Solvezi, 12°13'S 25°39'E, 1400m, 10.XI.2005, leg. M. Halada.

**Z i m b a b w e** : 1♂, Mushandike Sanct. (Masvingo env.), 11.XII.1998, leg. Bečvář; 1♂, Bubi, Bubi river, 80 km NE Beitbridge, 8.XII.1998, leg. J. Halada.

***Chalybion spinolae* ssp. *rufopictum* (MAGRETTI 1884) (3♀♀, 2♂♂)**

**B e n i n** : 1♀, 20 km NW Dhawran, 14°40'N 44°15'E, 1800m, 29.X.2005, leg. J. Halada.

**Y e m e n** : 2♀♀, 15 km SE Save, 8.-25.IV.2000, leg. J. Halada.

**M a l i** : 1♂, 10 km S Mopti, 8.VIII.1991, leg. Max Schwarz.

**O m a n** : 1♀, 1♂, Dhofar province, Pakhyut, 5-20m, 16°45'N 53°24'E 23.III.2015, leg. J. Halada.



***Chalybion tibiale* (FABRICIUS, 1721) (1 ♀, 1 ♂)**

South Africa: 1♀, East Cape, Sneenberg, N Graff Reinet, Lootsberg pass, 1446m, 26.VII.2007, leg. Snižek; 1♂, West Cape, Klein karoo, Langberg, Grot river, 15.XII.2002, leg. Ma. Halada.

***Chalybion tomentosum* HENSEN, 1988 (1 ♂)**

Yemen: 1♂, Hawf NE Albhaydah, 200-730m, 16°40'N 53°05'E, 14.X.2005, leg. J. Halada.

***Chalybion triangulum* HENSEN, 1988 (1 ♂)**

Guinea - NW: 1♂, Madina Salambandi, 11°55.65'N 11°53.85'W, 11.VII.2004, leg. Ma. Halada.

***Chalybion turanicum* (GUSSAKOVSKIJ, 1935) (73 ♀ ♀, 161 ♂ ♂)**

Iran: 1♂, Azer. e Sh.prov. Sis, 10 km E Shabestar. 38°26'N 45°86'E, 15400m, 19.VI.2010, leg. Mi. Halada.

Kazakhstan: 2♂♂, Alma-Ata-Medeo, Zaalijskj Alatau Mts., 1700m, 5.-8.VII.1980, leg. Turner; 1♀, Talasskiy Mts., Aksu-Dzhabagly res., 2400m, leg. Gurko; 1♀, Kotal garden, 15.VI.1992, leg. Deneš; 2♀♀, Darbaza, 40 km N Tachent, 30.V.1994, leg. J. Halada; 1♀, Kuyuk, 40 km SW Djambul, 1.VII.1992, leg. M. Halada; 6♀♀, 14♂♂, Alma Ata, 35 km záp Aksay, 16.VII.1981, leg. Kocourek; 6♂♂, Isik 3 km S, 22.-23.VI.1992, leg. Deneš; 3♂♂, Vanovka, 80 km E Djambul, 30.VI.1992, leg. M. Halada & Jirousek; 3♂♂, 10 km E Djambul, 31.V.1994, leg. J. & Ma. Halada; 2♂♂, 20 km SE Aksay env., 16.-19.VI.1992, leg. J. Halada; 1♂, SE Tichlik env., 20.VI.1992, leg. Deneš; 1♂, Fabriktny, 40 km E Alma Ata, 23.VI.1992, leg. M. Halada; 1♂, Alma Arasan/Alma Ata env., 1400m, 10.VII.1976, leg. Niedl; 1♂, Alma-Ata, VIII.1984, leg. Karlik.

Kyrgyzstan: 1♀, Kurpsaigorge, ~900m, Atoinoksky Mt. R., 41°32'N 72°21'E, 18.VI.1996, leg. Zonstein, det. Ohl; 1♀, Kobusku grg., 2400m, Susamyr Mt. R., S-slope, 41°45'N 74°05'E, 5.VII.1996, leg. Zonstein, det. Kazenas; 1♀, E-Terskei Mt. R., Arashan, 2000m, 42°28'N 78°32'E, 23.VIII.1999, leg. Zonstein, det. Ohl; 2♀♀, 4♂♂, Kirghizky Mt. R., Ala-Archa river, Uzumbulat, V.2000, leg. Gurko, det. Ohl; 1♀, 3♂♂, Kirghizky Mts., Ala-Archa river, Kashka-Suu, 1650m, VII.2000, leg. Gurko, det. Ohl; 1♀, Bishkek, 3.VII.1992, leg. Zonstein, det. Kazenas; 7♀♀, 14♂♂, Kirghizky Mt. R., Uzun-Bulag, Ala-Archa river, VII.2000, leg. Gurko; 6♀♀, 1♂, Kirghizky Mt. R., Kashka-Suu, Ala-Archa river, 1650m, VII.2000, leg. Gurko; 6♀♀, 18♂♂, Kirghizky Mt. R., Kashka-Suu, Ala-Archa river, V.2000, leg. Gurko; 3♀♀, 11♂♂, Tash-Arik, 11 km E Talas, 4.VII.1992, leg. M. Halada; 4♀♀, 5♂♂, Kirghyz. Mt., 1800m, Ala-Archa river, Kashkasi, 1999, leg. Gurko; 2♀♀, Chamanli-Sai, 41.2°N 71.8°E, 30.V.1995, leg. Mučka & J. Halada; 1♀, 1♂, Tshatkalski Mts., Yuzun-Bunek, VII.1998, leg. Gurko; 1♀, Ferghan. Mt. R., Toskool-Ata, 1500m, 29.VII.2000, leg. Gurko; 1♀, Kirghizkiy Mts., Tchon-Aryk, 900m, 11.VII.2001, leg. Gurko; 2♀♀, 6♂♂, Kirghizky Mt.R., Ala-Archa river, Oru-Say, 1650m, VII.2000, leg. Gurko; 1♀, 4♂♂, Kirghizky Mt. R., Ala-Archa river valley, 1650m, 17.VIII.2000, leg. Gurko; 1♀, Terskey Alatau, Arshan, 28.VIII.1999, leg. Gurko; 1♀, 6♂♂, Ala-Buka, 41.5°N 71.2°E, 6.VI.1995, leg. J. Halada & Mučka; 1♀, Alai-Mts., 2200-2300m, 10.-20.VIII.1999, leg. Gurko; 1♀, Narynskaya Distr., Dzhumgalsky, S Kyzyl-Oy, 1750-1800m, Tal des Flusses Kokomeren, 41°56'N 74°09'E, 5.-6.VII.1996, leg. H. Rausch; 1♀, Dzahal-Abad area, Shamaldy-Say, VI.2000, leg. Gurko; 5♂♂, Chamanli-Sai, 41.2°N 71.8°E, 30.V.1995, leg. Mučka; 2♂♂, Ferghansky Mt. R., Kok-Jangak, VI.2000, leg. Gurko; 1♂, Jalal-Abad, Ala-Buka, Umg. Kara-Unkur u. Sovet Sai, 41°13'48"N 71°23'39"E, 980-1100m MSL, 28.-30.V.2008, leg. H. & R. Rausch; 2♂♂, Jalal-Abad, 20 km SSW Ala-Buka, 41°13'8"N 71°23'39"E GPS, 980-1100m, 28.-30.V.2008, leg. E. & J. Hüttinger; 1♂, 10 km S Sari-Tselek, 42°N 72°E, 5.VI.1995, leg. Mučka; 1♂, Osh area, 25 km N Osh Aravan, VI.12000, leg. Gurko.

Tajikistan: 1♀, 3♂♂, Bulbulčašma, Babatagchrebet, 23.V.1974, leg. Deneš; 1♀, Karatag, VI.1966, leg. Deneš; 1♀, Taškent, 40 km vých. Čirčik, 4.VII.1981, leg. Kocourek; 1♂, Nurak, leg. Deneš; 1♂, Vachš, 5VI.1990, leg. J. & M. Halada; 1♂, Dušambe, 40 km vých. Javros, 24.VI.1981, leg. Kocourek.

**T u r k e y** : 1 ♀, Izmir, Dikili env., 19.VI.1998, leg. J. Halada; 1 ♀, 20 km E Alanya, 16.VI.1997, leg. Ma. Halada; 1 ♀, 60 km E Mut, Kirobasi, 19.VI.1997, leg. Ma. Halada; 1 ♂, 20 km N Mardin, 21.VI.1997, leg. Ma. Halada; 1 ♂, Nemrut Dagi Karadut, 2.VII.1993, leg. Mi. Halada; 1 ♂, 10 km S Kayseri, 38°37'N 35°31'E, 1660m, 20.VII.2003, leg. Straka.

**U z b e k i s t a n** : 2 ♀ ♀, W-Zeravshan Mts., Dzhindyaria valley, 39°12'N 67°16'E, 1300m, 3.VII.1999, leg. Zonstein; 1 ♂, Hissar Mt. R., N-slope, near Tashkurgan, 38°46'N 67°16'E, 2000m, 15.VII.1999, leg. Zonstein; 5 ♀ ♀, 11 ♂ ♂, Tshinaz distr. Syr. Darja, 25.V.2003, leg. Gurko; 1 ♀, Czirczik, 41.1°N 69.1°E, 28.V.1994, leg. Ma. Halada; 1 ♀, 15 ♂ ♂, Aktaš, 40 km NE Tachkent, 41.2°N 69.4°E, 27.V.1997, leg. J. & Ma. Halada; 1 ♀, 5 km W Ddjizak, 39.9°N 67.5°E, 23.V.1994, leg. Ma. Halada; 7 ♂ ♂, Samarkand env., 19.-21.V.1994, leg. J. & M. Halda; 1 ♂, Thinz, Syr-Daria riverside, 40°54'N 68°32'E, 25.V.1995, leg. Zonstein; 1 ♂, Zeravshan Mts., Aman-Kutan pass, 1600m, 24.V.2000, leg. Gurko; 1 ♂, Catkakhij Chr. Mts., Mt. Bolšoj, Čimgan, 1800m, 26.VI.1980, leg. Tyrner; 1 ♂, Tashkent env., Iskander, 27.-28.VI.1980, leg. Tyrner.

### ***Chalybion walteri* (KOHL, 1889) (10 ♀ ♀, 19 ♂ ♂)**

**E g y p t** : 1 ♂, Mokkat, 16.VI.1929, leg. H. Priesner.

**G r e e c e** : 1 ♂, Kletra env., 3.VII.1997, leg. Deneš.

**J o r d a n** : 3 ♂ ♂, Lordan Valey Mubalath, 27.IV.1996, leg. Mi. Halada; 1 ♂, Dead See env., 16.IV.1996, leg. Mi. Halada; 2 ♂ ♂, Jordan valey, S Shuna, 25.-26.IV.1996, leg. Ma. & Mi. Halada; 1 ♂, North Shuna, 29.-30.IV.1996, leg. Ma. Halada.

**K y r g y z s t a n** : 1 ♀, Ala Buka, 41.5°N 71.2°E, 6.VI.1995, leg. J. Halada; 1 ♂, Tshatkal Mt. R. Shikaftar, VII.2001, leg. Gurko.

**S y r i a** : 2 ♂ ♂, 60 km S Damascus, Khabab, 14.V.1996, leg. Ma. Halada; 1 ♂, Dibbin, 30 km S Suwayda, 15.-17.V.1996, leg. Mi. Halada.

**T u r k e y** : 1 ♀, 140 km S Kayseri, 37°51'N 35°22'E, 1100m, 17.VII.2003, leg. Straka; 1 ♀, 10 km S Kayseri, 1660m, 38°37'N 35°31'E, 20.VII.2003, leg. Straka; 1 ♀, Nemrut Dagi Karadut, 2.VII.1993, leg. Mi. Halada; 1 ♀, Burdur, 5 km NE Yesilova, 1060m, 37°35'N 29°55'E, 6.VII.2006, leg. Mi. Halada; 1 ♀, vil. Eskisehir Sakar Ilica, near Gümele, 6.-9.VII.1997, leg. Prudek & Řiha; 1 ♂, 30 km NW Gaziantep, 2001, leg. Snižek; 1 ♂, 25 km E Malatya, Kopoksiz, 8.VII.1997, leg. Ma. Halada; 1 ♀, 1 ♂, Pamukkale, Asia minor, 8.+9.VI.1964, leg. J. Gusenleitner; 1 ♀, 1 ♂, Pamukkale, Asia minor, 31.V.1966, leg. Kusdas; 1 ♀, Antakya, 3.VI.1965, leg. M. Schwarz.

**U z b e k i s t a n** : 1 ♂, Tshinaz distr., Syr Darja, 25.V.2003, leg. Gurko.

### ***Chalybion zimmermanni* DAHLBOM, 1843 (36 ♀ ♀, 11 ♂ ♂)**

**M e x i c o** : 33 ♀ ♀, 9 ♂ ♂, Guerrero Acahuizotla, 35 km S Chilpancingo, 1500m, 6.-9.VI.1997, leg. Kadlec; 1 ♀, Veracruz Montepio, 40 km N Catemaco, 30m, 24.-28.V.1997, leg. Kadlec.

**N i c a r a g u a** : 1 ♀, Dept. Jinotega Cerro Diablo, 1300-1500m, 22.V.2005, leg. Berghe; 1 ♀, 1 ♂, Granada Dept., Domitila, Nat. Priv. Reserva, 11°42.506'N 85°57.253'W, 14.-16.V.2006, leg. Dauber; 1 ♂, Granada, Laguna de Apoyo, 20.-22.V.2005, leg. Berghe.

## **Genus *Sceliphron* KLUG, 1801 (1.115 ♀ ♀, 822 ♂ ♂)**

### ***Sceliphron arabs* (LEPELETIER de SAINT FARGEAU, 1845) (2 ♀ ♀, 3 ♂ ♂)**

**S y r i a** : 1 ♀, unreadable, 16.-17.VI.1978, leg. Hradský.

**T u r k e y** : 1 ♀, 20 km NW Iğdir, 29.VI.1997, leg. Ma. Halada; 2 ♂ ♂, 25 km E Malatya Kopeksiz, 2.VII.1977, leg. Ma. Halada.

### ***Sceliphron argentifrons* (CRESSON, 1865) (1 ♀)**

**C u b a** : 1 ♀, X.1984, Escambray, FDJT.

***Sceliphron asiaticum* (LINNAEUS, 1758) (12 ♀ ♀, 30 ♂ ♂)**

- A r g e n t i n a : 7 ♂ ♂, ruta 40, 50 km N Cachi, 2700m, 24°50'S 66°09'W, 19.II.2010, leg. M. Halada; 1 ♀, 20 ♂ ♂, Salta province, 50 km Cachi, 24°50'S 66°09'W, 2700m, 26.I.2009, leg. Marek Haklada; 1 ♂, Salta province, 40 km N Cachi, ruta 40, 24°51'S 66°09'W, 2700m, 16.I.2012, leg. M. Halada; 1 ♀, 1 ♂, Pronun Iamiento, province Entre Rios, 23.II.1964, leg. Walz; 1 ♂, ruta 40, 40 km S Santa Maria, 26°60'S 66°12'W, 2000m 10.II.2010, leg. M. Halada; 1 ♀, ruta 40, 10 km N Belen, 1300m, 27°35'S 67°00'W, 8.II.2010, leg. M. Halada;
- B o l i v i a : 1 ♀, Depto. Sta. Cruz, Rio Seco, 300m, II.1962, leg. Walz.
- B r a s i l i a : 1 ♀, Santarem, 02°26'S 54°41'W, 29.XII.1985, leg. Nimmervoll.
- C h i l e : 1 ♀, Chillan, XI.1991, leg. Stary; 1 ♀, reg. VII, Linares Roblena env., 23.XI.2003, leg. Snížek; 2 ♀ ♀, Santiago Malepillo, X.1986, leg. Penag.
- E c u a d o r : 1 ♀, Loreto, 50 km SW El Coca, 400m, 4.-11.III.2002, leg. Kudrna.
- N i c a r a g u a : 1 ♀, Dept. Tinotega Cerro Diablo, 1300-1500m, 22.V.2005, leg. van den Berghe.

***Sceliphron assimile* (DAHLBOM, 1843) (45 ♀ ♀)**

- M e x i c o : 45 ♀ ♀, Guerrero, El Carrizal, 35 km W Acapulco, 10m, 2.-6.VI.1997, leg. Jelinek.

***Sceliphron caementarium* (DRURY, 1773) (26 ♀ ♀, 34 ♂ ♂)**

- C a n a d a : 1 ♂, Ontario, London, VII.2002, leg. Pitelka.
- C o s t a R i c a : 1 ♀, Kath. Miss., Naking Hopo, Chira, 1935, leg. Kitan.
- C r o a t i a : 2 ♀ ♀, 2 ♂ ♂, Dalmatia, 30 km S Šibernik, 0.-15.IX.2010, leg. J. Halada; 4 ♀ ♀, 6 km NW Schibenik Vodice, 8.IX.2008, leg. Kadleková; 3 ♀ ♀, Isl. Cres, Cres env., 8.-10.IX.2009, leg. J. Halada; 1 ♀, 2 ♂ ♂, Isl. Rab, 3 km NW Lopar, 12.-22.VIII.2010, leg. M. & T. Halada; 1 ♀, 1 ♂, 30 km S Šibernik Dolec, 11.IX.2011, leg. J. Halada; 1 ♀, 2 ♂ ♂, Istria, 10 km S Pula, 7.IX.2009, leg. J. Halada; 1 ♀, Pelješak, Prapratno, 15m, 13.VII.2012, leg. Major; 2 ♂ ♂, Isl. Rab, 3 km NW Lopar, 15.-22.VII.2011, leg. M. Halada; 1 ♂, Villas Rubin, ca. 4 km E Rovinj, 45°27'N 13°43'E, 0m, leg. J. Gusenleitner.
- F r a n c e : 2 ♀ ♀, 1 ♂, Manival St Ismier (38), 460m, 22.+25.VIII.2002, leg. Desse; 1 ♀, 1 ♂, Pyrenées Orient, 10 km S Padres, 42°23'N 2°23'E, 600m, 20.VII.2011, leg. J. Halada; 6 ♂ ♂, Haut-Alpes-Provence, Lac de Ste Croix, Les Salles, 600m, 16.VII.2015, leg. J. Halada.
- I t a l y : 1 ♂, Sardinia, Isola Rosa, Badesi, 5.VII.2012, leg. Volf; 1 ♂, Valle d Chisone, 50 km SWW Torino, 45°02'N 6°58'E, 1450m, 8.VIII.2011, leg. J. Halada.
- J a p a n : 1 ♀, Chiyoda-Ward, Tokyo, 17.VII.1963, leg. Yokokura; 1 ♀, Chiyoda-Ward, Tokyo, 27.VI.1963, leg. Yolokura; 1 ♂, Tokyo, Chiyoda-Ward, 26.VII.1963, leg. Yokokura.
- U S A : 1 ♀, Kentucky, Crail Hope, 27.V.1948, leg. Carl Cook; 2 ♀ ♀, 2 ♂ ♂, Florida, Tallahassee, Leon Co., 1.-10.X.1978, leg. Soldán; 1 ♀, Florida, Dade Co., Everglades NP HQ, 25.VII.1998, leg. Heiss; 1 ♀, Florida, Tallahassee, Leon Co., 5.-20.X.1978, leg. Soldán; 1 ♀, California, Anza Borrego N Park, 29.IX.1975, leg. Nagase; 1 ♀, California, Anza Borrego N Park, 22.IX.1973, leg. Nagase; 2 ♂ ♂, Michigan, Manistee Co., 7.+22.VI.1957, leg. Dreisbach; 7 ♂ ♂, (WA), Beuton Co., Prosser, WSU area, VI.1996, leg. Stary; 1 ♂, Arizona, 4 m. S Wilcox, Cochise Co, 26.VII.1978, leg. ?
- V a r i a t i o n : ♀, hindtibia entirely black, hindtarsi black.
- E r i t h r e a : 1 ♀, 1968, leg. Ing. Kribli.

***Sceliphron coromandelicum* (LEPELETIER de SAINT FARGEAU, 1845) (1 ♀)**

- I n d i a : 1 ♀, Assam Nameri Nat. Park, Tezpur 60 km N, 150m, VIII.1997, leg. Afonin-Siniaev.

***Sceliphron curvatum* (F. SMITH, 1870) (125 ♀ ♀, 46 ♂ ♂)**

- A u s t r i a** : **Burgenland**: 1 ♀, Oberdrosen, 270m, 46°53'N 16°07'E, 5.VIII.1994, leg. J. Gusenleitner; 1 ♀, Oberhenndorf, 360m, 46°59'N 16°08'E, 6.VIII.1995, leg. J. Gusenleitner; 1 ♀, Schützengraben E Minihof-Liebau, 46°53'N 16°05'E, 370m, 6.VIII.1996, leg. J. Gusenleitner; 1 ♀, Marzerkogel ESE Mattersburg, 47°43'N 16°26'E, 11.VIII.2000, leg. Bregant. **K ä r n t e n**: 4 ♂ ♂, Metnitztal, Grades, ca. 800m, 1.-5.V.2004, leg. Heiss. **Niederösterreich**: 1 ♀, Lunz am See, 600m, 47°51'N 15°02'E, 5.VII.2004, leg. H. Malicky; 1 ♀, Lunz am See, 600m, 47°51'N 15°02'E, 5.VIII.2003, leg. H. Malicky; 1 ♀, Lunz am See, 600m, 47°51'N 15°02'E, 9.VI.2003, leg. H. Malicky; 1 ♀, Traisen, 9.VII.2015, leg. Dollfuss; 1 ♀, Purgstall, 11.VII.2008, leg. F. Ressler; 1 ♀, Purgstall, 26.VI.2008, leg. E. Ressler; 7 ♀ ♀, Waidhofen/Ybbs, 30.III.2008, leg. Lichtenberger; 1 ♀, Lunz/See, 3.VIII.2012, leg. H. Malicky; 1 ♀, Lunz/See, 24.VII.2012, leg. H. Malicky; 1 ♀, Scheibbs, 48°025'N 15°09'50"E, 330m, 19.VIII.2007, leg. H. Rausch; 1 ♀, Falkenstein, Steinbruch, 48°43'N 16°35'E, 14.VIII.2000, leg. Bregant; 1 ♂, Lunz/See, 600m, 47°51'N 15°02'E, 13.-28.VII.2005, leg. H. Malicky; 1 ♂, Pulkau, 40°42'N 15°51'30"E, 260m, 20.VI.2005, leg. J. Gusenleitner; 1 ♂, St. Valentin, Rubring, 6.VIII.2011, leg. Hofmann. **Oberösterreich**: 3 ♀ ♀, Linz, Urfahr, Aubrunnerweg 7, 8.V.2009, leg. Janota; 2 ♀ ♀, Linz, 48°18'00"N 14°17'24"E, 16.VI.2004, leg. Füreder; 2 ♀ ♀, Linz, Biozentrum, 48°20'17"N 14°18'49"E, 18.VI.2002, leg. J. H. Schmidt; 1 ♀, Linz, Biozentrum, 48°20'17"N 14°18'49"E, 20.VI.2004, leg. J. H. Schmidt; 1 ♀, Linz-Froschberg, 48°17'N 14°16'E, 345m, 19.VI.2013, leg. J. Gusenleitner; 1 ♀, Linz-Froschberg, 48°17'N 14°16'E, 350m, 8.VI.2007, leg. J. Gusenleitner; 1 ♀, Linz-Froschberg, VI.2002, leg. ?; 2 ♀ ♀, 1 ♂, Linz-Dornach, 26.+29.IV.2004, leg. Moser; 1 ♀, Linz-Urfahr/St. Magdalena, 6.VII.2008, leg. Günther; 1 ♀, Linz-Froschberg, leg. Heutschocek; 2 ♀ ♀, 1 ♂, Linz, IV.2005, leg. Walter; 1 ♀, Linz-Urfahr, KGA Riesenhof, Parzellen 60-61, 48°19'06"N 14°16'13"E, e.p., 28.VII.2006, leg. Tiefenthaler; 1 ♀, Linz-Urfahr, 13.VI.2000, leg. ?; 2 ♀ ♀, Kreutern bei Bad Ischl, 500m, 16.VII.2003, leg. Pöll; 2 ♀ ♀, Linz-Dornach, 48°20'N 14°18'E, 7.IV.2004, leg. ?; 1 ♀, Linz-Ebelsberg, VI.2005, leg. Tiefenthaler; 1 ♀, Linz-Froschberg, 48°17'N 14°16'E, 17.VII.1995, leg. J. Gusenleitner; 1 ♀, Ruffling W Linz, 48°17'N 14°13'E, 20.VI.2007, leg. J. Gusenleitner; 1 ♀, Linz-Dornach, 48.33°N 14.31°E, 21.VII.1999, leg. Traxler; 1 ♀, Wolfem N Steyr, Kroisbach, Rossberg, (Altenhofstr. 9), 350, 10.VI.2009, leg. Hauser; 1 ♀, Linz-Gründberg, 48°20'N 14°17'E, em., 15.VI.2015, leg. Reichl; 1 ♀, Linz-Dornach, 1.VIII.2001, leg. H. Schmidt; 1 ♀, 1 ♂, Kreutern bei Bad Ischl, 500m, em., 29.VI.2003, Lehmtöpfe im Dachboden, XI.2002, leg. Pöll; 1 ♀, Linz-Hafnerstr., 27.III.2002, leg. Auberger; 1 ♂, Linz-Urfahr, Riesenhofstr. 18, 7.VI.2004, e.l., leg. Kunsch; 1 ♂, Linz-Dornach, Biologiezentrum, 48°20'N 14°16'E, 7.VI.2004, leg. F. Gusenleitner; 1 ♂, Langstögen, NE Prambachkirchen, 48°19'40"N 13°55'E, 370m, leg. J. Gusenleitner; 1 ♂, Linz-Dornach, Biologiezentrum, 12.IV.2013, e.l./larva 18.IX.2012, leg. Posser; 1 ♂, Linz-Gründberg, 48°20'N 14°17'E, em., 5.VII.2015, leg. L. Reichl; 1 ♂, Linz-Gründberg, 48°20'N 14°17'E, em., 25.VI.2015, leg. L. Reichl. **Steiermark**: 1 ♀, Bad Gleichenberg, 46°53'N 15°55'E, 320m, 25.VII.1996, leg. J. Gusenleitner; 1 ♀, Bad Gleichenberg, 17.VII.2003, leg. J. Gusenleitner; 1 ♀, Bad Gleichenberg, 2.VIII.1993, leg. J. Gusenleitner; 1 ♀, Pirkwiesen, W St. Marain bei Graz, 47°01'N 15°39'E, 460m, 27.VII.1996, leg. J. Gusenleitner; 1 ♀, Höllgraben SE Jagerberg, 46°50'N 15°46'E, 320m, 8.VII.2003, leg. J. Gusenleitner; 1 ♀, Schattenberg SSW Fehring, Lehmgrube, 24.VII.1995, leg. Bregant; 1 ♀, Windische Bühel, Kranach (Menhart), NNE Leutschach, 46°41'N 15°28'E, 10.VIII.1997, leg. Bregant; 1 ♀, Windische Bühel, NNW Leutschach, Eichberg-Trautenburg, S Kreuzberg, 46°42'N 15°27'E, 31.V.1996, leg. Bregant; 1 ♀, Pirkwiesen W St. Marein bei Graz, 31.VII.1995, leg. Bregant; 1 ♀, Botanisches Institut, Graz, 8.VII.1989, leg. Teppone; 1 ♂, Buchberg N Hohenbrugg/Raab, 46°58'N 16°05'E, 360m, 26.VII.1995, leg. J. Gusenleitner; 1 ♂, Freienberg SW Stubenberg am See, 6.VIII.1995, leg. Bregant; 1 ♂, Graz, Messendorf, Heimgartenanlage, 12.VI.1996, leg. Bregant; 1 ♂, Graz, Messendorf, Heimgartenanlage, 47°02'N 15°29'E, 9.VI.2000, leg. Bregant; 1 ♂, Blumegg bei Lannach SW Graz, X.1981, leg. Krajčiček, geschlüpft XII.1981/I.1982. **Salzburg**: 1 ♀, Salzburg, Tamsweg/Lg. 11.IX.2006, leg. Holzmann. **Tirol**: 1 ♀, Innsbruck, 21.VI.2005, leg. Heiss; 1 ♀, Innsbruck, Mühlau, Hausgarten, 10.VII.2010, leg. Heiss; 1 ♀, Innsbruck, Mühlau, Hausgarten, 30.III.2001, leg. Heiss; 1 ♂ Innsbruck, Mühlau, 20.IV.2000, leg. Heiss.
- B u l g a r i a** : 1 ♀, Trakia, Proslav, 15.VII.1997, leg. Zaykov.
- C r o a t i a** : 1 ♀, Promaina env., 43°20'N 16°58'E, IX.2012, leg. Pacholatko; 1 ♀, 1 ♂, Rovinj, 4.+9.VII.2004, 45°26'N 13°41'E, leg. J. Gusenleitner.

- C z e c h R e p u b l i c : 1 ♀, Moravia, Znojmo, Havraníky, 48°49'N 16°00'E, 320m, 29.VI.2011, leg. M. Halada, det. J. Gusenleitner; 1 ♀, Bohemia mer., Třeboň, 29.VIII.-5.IX.2014, leg. Tichý; 1 ♀, Bohemia mer., Třeboň, Domanín, 25.VII.2014, leg. Snižek; 1 ♀, Moravia mer., Bzenec vill., 5.-6.VI.2005, leg. Řiha; 1 ♀, Moravia mer., Brno-Bohunice, 25.VII.2004, leg. Trojan; 1 ♀, Moravia mer., Oslavany (SE part.), 240m, 49°07.196'N 16°20.084'E, 1.VII.2008, leg. Řiha; 1 ♀, Moravia mer., Brno-Královo pole, 31.V.2003, M. Řiha; 1 ♀, Moravia mer., Brno-Židenice, 29.V.2003, leg. L. Řiha; 1 ♀, Moravia mer., Brno-Královo pole, 24.VII.2006, leg. M. Řiha; 1 ♀, Moravia mer. Brno-Židenice, 21.VI.2005, leg. L. Řiha; 1 ♀, Bohemia-S, Č. Budějovice, D. Voda, 48°58'N 14°31'E, 400m, 22.VII.2013, leg. M. Halada; 1 ♀, Bohemia-S, Č. Budějovice, D. Voda, 48°58'N 14°31'E, 400m, 21.VII.2014, leg. M. Halada; 1 ♀, Bohemia mer., 15 km SW Č. Budějovice, Dívčí Kamen ruin, 450m, 29.VI.2011, leg. J. Halada; 1 ♀, S-Moravia, Brno-Řečkovice, VII.2003, ex pupa, leg. Němez; 1 ♀, S Moravia, Havraníky, Znojmo, 48°49'N 16°00'E, 320m, 11.VII.2013, leg. M. Halada; 1 ♀, Moravia, Březůvky env. (near Zlín), 1.-4.VII.2004, leg. Průdek; 1 ♀, S Moravia, Brno-Královo pole, VII.2003, leg. Řiha; 1 ♀, S Moravia, Znojmo Únanov, 2.VII.2013, leg. Snižek; 1 ♀, Bohemia-S, Dobrá-Voda u. Č.B., 48°58'N 14°31'E, 400m, 18.VI.2014, leg. M. Halada; 1 ♀, Bohemia-S, Č. Budějovice, 48°58.3'N 14°53.0'E, 440m, 21.VI.2009, leg. M. & Z. Halada; 1 ♀, Bohemia-S, Č. Budějovice, Dobra Voda, 48°58'N 14°32'E, 470m, 30.V.2011, leg. M. Halada; 1 ♀, 13 ♂, Bohemia-S, Č. Budějovice, Máj, 48°58'N 14°26'E, 400m, 20.VII.2013, leg. M. Halada; 1 ♀, Moravia, Brno-Královo pole, 12.VI.2003, leg. M. Řiha; 1 ♂, Moravia, Lhota u Pačlavic, 15.VI.2008, leg. Deneš sen.; 1 ♂, Moravia, Lhota u Pačlavic, 1.VII.2007, leg. Deneš sen.; 1 ♂, Moravia, Lhota u Pačlavic, 21.VI.2006, leg. Deneš sen.; 1 ♂, Moravia, Lhota u Pačlavic, 1.VI.2008, leg. Deneš sen.; 1 ♂, Moravia, Lhota u Pačlavic, 1.VI.2007, leg. Deneš sen.; 1 ♂, Moravia, Brno-Židenice, 8.VIII.2011, leg. Řiha; 1 ♂, Moravia, Březůvky env. (near Zlín), 4.-8.VI.2004, leg. Průdek; 1 ♂, Bohemia, Č. Buějovice, Dobra Voda, 48°58'N 14°30'E, 400m, 7.VI.2012, leg. Z. Haladova; 1 ♀, Bohemia, Dobra Voda u Č. B. ch, 48°58'N 14°31'E, 400m, VIII.2015, leg. M. Halada.
- F r a n c e : 1 ♀, Hote Provence, NW Selonet, 1000m, 44°23'N 6°17'E GPS, 24.VI.2004, leg. Malicky, det. J. Gusenleitner.
- G e r m a n y : 1 ♀, Bayern, München, Ramersdorf, 20.III.2014, leg. Sautermeister, det. J. Gusenleitner.
- G r e e c e : 1 ♀, Zakynthos SE, "Banana Beach", 0-5m, 25.-31.VIII.2009, leg. Aistleitner; 1 ♀, SW Skiatos Isl., Koukounaries env., 30.VI.-9.VII.2012, leg. Burlisch; 1 ♀, Peloponissos mer., Mt. Tajetos Oros centr., 28.-31.X.2010, leg. J. Halada; 1 ♀, Thráki NW, Mt. Menikio, 12.VIII.2010, leg. J. Halada; 1 ♀, Atheny env., V.1999, leg. Luhovec.
- H u n g a r y : 1 ♀, Pákozd E Székesfehérvár, 47°13'N 18°31'E, 150m, 25.VI.2015, leg. M. Halada.
- K y r g y z s t a n : 2 ♀ ♀, 1 ♂, Ferghan Mt. R., Toskool-Ata, 1500m, 29.VII.2000, leg. Gurko; 2 ♀ ♀, Ferghana Mt. R., Ak-Terek, 1750m, 41°17'N 72°49'E, 22.VII.2000, leg. Makogonova; 1 ♀, N-slope of Kirghizky Mt. Ridge, Ala-Artcha valley, 1700m, 7.VI.1994, leg. Makogonova; 1 ♀, Bishek reg. Mallnovka, 1500m, VI.2000, leg. Gurko; 1 ♀, Kirghizky Mt. R. Ala Archa river, Ooru-Say, 1650m, VII.2000, leg. Gurko; 1 ♀, Tian-Shan, Dzhungharsky Mts., Boichumka, 10.VII.1997, leg. Gurko; 1 ♀, Kirghizky Mt. R., Ala-Artcha river, 1800m, Kashkasi, 2.VIII.2000m, leg. Gurko; 1 ♀, Ferghansky Mt. R., Kok-Jangak, VI.2000, leg. Gurko; 1 ♀, Kirghizky Mt. R., Uzun-Bulag, Ala-Artcha river, VII.2000, leg. Gurko; 1 ♀, Kighizsky Mts., Ala-Artcha river, Kashka-Suu, 1650m, V.2000, leg. Gurko; 1 ♀, Tshatkal Mt. R., Silikaftai, VII.2001, leg. Gurko; 1 ♀, Tchatkal Mt. R., Khodzha-Ata r. 41°50'N 71°56'E, 5.VII.2000, leg. Makogonova; 1 ♀, 10 km S Sari-Tzelek, 42°N 72°E, 5.VI.1995, leg. Múčka.
- M o n t e n e g r o : 1 ♀, Crna Gora, Bečići p. Budova env., 1.-14.VII.2002, leg. Burlisch.
- S l o v e n i a : 1 ♀, Kranj, 19.VII.1997, leg. Malicky.
- T a j i k i s t a n : 1 ♀, Izinbaiz, 23.VIII.1989, leg.?
- U z b e k i s t a n : 3 ♀ ♀, Tchatkal Mts., Bashkyzylsai river canyon, 1300m, 41°11'N 69°50'E, 5.VIII.1999, leg. Zonstein; 1 ♀, Kashadaria Reg., nr. Shakhrisabz city, 39°03'N 66°50'E, 650m, 6.VII, 1999, leg. Makogonova; 1 ♀, W-Zeravshan Mts., Dzhindyaria valley, 39°12'N 67°16'E, 1300m, 3.VII.1999, leg. Makogonova.

***Sceliphron deforme* (F. SMITH, 1856) (32 ♀ ♀, 9 ♂ ♂)**

- C h i n a** : 2 ♀ ♀, Jingangling, 36.2°N 111.7° E, 50 km W Linfen, 29.-30.V.1996, leg. J. Halada.
- I n d i a** : 1 ♀, Assam Nameri Nat. Park, Tezpur 60 km N, 150m, VIII.1997, leg. Afoniu-Siniaev.
- J a p a n** : 1 ♀, Ogum, Yamacato Ref., 19.VIII.1966, leg. Itami; 1 ♀, Kamakura, 26.VII.1952, leg. Nagak; 1 ♀, 1 ♂, Kamakura, 26.VII.1958, leg. Nagak; 1 ♀, Okayama, Tsuyama-City, 23.VIII.1959, leg. T. Ono.
- L a o s** : 20 ♀ ♀, 7 ♂ ♂, Hua Phan Province, Ban Saleui, Phou Pan-Mt., 20°13'30"N 103°59'26"E, 1350-1900m, 2010-2013, leg. Holzschuh & locals; 1 ♀, Hua Phan Province, Ban Suleui, Phou Pan Mt., env., 6.-18.V.2004, leg. Kantur.
- T h a i l a n d** : 1 ♀, Nan, außerhalb Mae Charim NP Eingang, 18°36'0"N 100°58'34"E, 260m, 13.V.2012, leg. E. & J. Hüttinger; 1 ♀, Pai (Sopong), 6.-9.VI.1997, leg. Snížek.
- T a i w a n** : 1 ♀, 1 ♂, Taoyuan province, Mingehih env., 1075m, 24.65°N 121.42°E, 9.V.2012, leg. J. Halada.
- V i e t n a m** : 1 ♀, Tam Dao, 800-1100m, 21°28'N 105°38'E GPS, 19.V.-13.VI.1995, leg. Malicky; 1 ♂, Tam Dao NP., Tam Dao env., 21°28'N 105°08'E, 1000m, 14.V.2012, leg. Jendek.

***Sceliphron destillatorium* (ILLIGER, 1807) (343 ♀ ♀, 307 ♂ ♂)**

- A l g e r i a** : 1 ♀, 2 ♂ ♂, Hammam Salihine, 24.-25.V.1971, leg. Hoffer & Horák; 2 ♀ ♀, Aures Ain Zaatout, 1.-4.VI.1971, leg. Hoffer & Horák; 1 ♀, G. Kabylia: Ait Hassem, 16.+18.VI.1971, leg. Hoffer & Horák; 1 ♀, Sidi-bell Abbès, leg.?
- A u s t r i a** : 1 ♀, Styria, Graz VIII.St. Peter, 25.VII.1995, leg. Bregant; 1 ♀, Styria, Lormanberg SW Kirchberg/Raab, 46°58'N 15°44'E, 450m, 11.VII.2003, leg. J. Gusenleitner; 1 ♀, Burgenland, Neusiedlersee, Winden env., Jois, 13.VII.1970, leg. Kudas; 1 ♀, Carinthia, Klagenfurt, 10.VII.1964, leg. 1 ♂, Burgenland, Mogersdorf, E Jennersdorf, 230m, 46°47'N 16°14'E, 2.VIII.1995, leg. J. Gusenleitner; 1 ♂, Steiermark, Unterhart, N Oberrakitsch, 46°45'N 15°45'E, 19.VII.1991, leg. J. Gusenleitner; 1 ♂, Steiermark, Am Berg, N Weixelbaum, 46°44'N 15°52'E, 23.VII.1991, leg. J. Gusenleitner; 1 ♀, Niederösterreich, Marchfeld, 11.VIII.1932, leg. Blühweiss; 1 ♀, Niederösterreich, E Schlatten, leg. Blühweiss; 1 ♀, Kärnten, Skutl (Leppen), 5 km E Eisenkappel, 46°29'N 14°40'E, 700m, 31.VII.1989, leg. J. Gusenleitner; 1 ♀, Burgenland, Neusiedl/See, Panzergraben, 15.VII.1960, leg. J. Gusenleitner; 1 ♀, Burgenland, Eisenstadt, VII.1933, leg. Wolfsschlager; 1 ♀, Oberösterreich, Lacken I. M., Oberstraß, 48.37°N 14.1°E, 29.VII.1997, leg. Pühringer; 1 ♀, Oberösterreich, Linz-Stadt, 3.VII.1996, leg. Martzy; 1 ♀, Niederösterreich, Schiltern N Langenlois, 380m, 48°31'N 15°38'E, 2.VII.2006, leg. J. Gusenleitner; 1 ♀, Niederösterreich, Salmhof-Markhof W Marchegg, 48°16'N 16°05'E, 16.VI.2000, leg. Bregant; 1 ♀, Steiermark, Breitenfeld/Rittschheim, 16.VII.1983, leg. Gusenleitner; 1 ♀, Steiermark, Graz VIII, Messendorf, Heimgartenanlage, 1.VI.1996, leg. Bregant; 1 ♀, Steiermark, Lahmbachgraben SE Kapfenstein, 46°52'N 15°59'E, 20.VIII.1996, leg. Bregant; 1 ♀, Steiermark, Windische Bühel NNW Leutschach, Eichberg-Trautenburg, S Kreuzberg, 46°42'N 16°27'E, 5.VII.1996, leg. Bregant & Klingberg; 1 ♂, Burgenland, Eselsbachgraben SE Neuhaus/kl., 46°52'N 16°03'E, 7.VIII.1993, leg. Gusenleitner; 1 ♀, Burgenland, Seewinkel E Apetlon, 27.VIII.1996, leg. Grims; 1 ♀, Burgenland, Jois, 16.VII.1983, leg. Holzmann; 1 ♀, Niederösterreich, Weissenkirchen/Wachau, 48°23'N 15°28'E, VI.1997, leg. Donner; 1 ♀, Steiermark, Jaun, S St. Peter/Ottersbach, 46°48'N 15°45'E, 280m, 3.VIII.1996, leg. J. Gusenleitner; 1 ♀, Steiermark, Dietersdorf bei Fürstenfeld, 260m, 47°01'N 16°06'E, 15.VI.1997, leg. J. Gusenleitner; 1 ♂, Niederösterreich, Breitenfurth-Ost bei Wien, 20.VII.1992, leg. Fuss.
- B u l g a r i a** : 2 ♀ ♀, Albena, 4.+14.VII.1976, leg. Tkalku; 1 ♀, Kaverna, 5.VII.1976, leg. Tkalku; 1 ♀, Slančev Brjag, 50m, 2.VI.-7.VII.2008, leg. Batelka; 1 ♀, 2 ♂ ♂, Staraplanina Place Ortoto, St.Vlas, 150m, 23.-29.VII.2011, leg. Maior; 1 ♀, Arkutino, VII.1966, leg. Görtler; 1 ♀, Plovdi, 24.VI.1984, leg. J. Halada; 1 ♂, Kresna, 41°42'N 23°11'E, 150m, 24.VI.2008, leg. M. & Ž. Halada; 1 ♂, Nessebr, 28.VI.1982, leg. Kocourek; 2 ♂ ♂, Slančev Brjag, 16.-18.VI.1977, leg. Pádr; 4 ♀ ♀, 1 ♂, Albena, 11.VII.1978, leg. Poláček; 4 ♀ ♀, 8 ♂ ♂, Slančev Brjag, 28.VI.-14.VII.1971, leg. Pádr; 6 ♀ ♀, 7 ♂ ♂, Slančev Brjag, 2.VII.1978, leg. Pádr; 1 ♂, Slančev Brjag, 16.VIII.1970, leg. Kocourek; 1 ♂, Slančev Brjag, 20.VII.-5.VIII.1965, leg. Pádr; 1 ♂, Slančev Brjag, VII.1966, leg.

Poláček; 4 ♀ ♀, 1 ♂, Sandanski, 1966-1969, leg. Kocourek; 1 ♀, 2 ♂ ♂, Sandanski, 24.VI.1978, leg. Pádr; 1 ♂, Vel. Tarnovo, 27.VI.1988, leg. Kulhanek; 1 ♂, Kalliakra, 3.VII.1978, leg. Pádr; 1 ♂, Nessebr, 30.VI.1982, leg. Kocourek; 1 ♂, Akutiro, VII.1971, leg. Gürtler; 1 ♀, Ropotam, VIII.1979, leg. Gürtler; 7 ♀ ♀, Plovdiv, 24.VI.1984, leg. J. Halada; 1 ♀, Zlaté Piski, 18.-29.VI.1986, leg. Halada; 1 ♀, Stančev Brjag, VI.1966, leg. Pospíšil; 2 ♀ ♀, Ropotamo, VII.1978, leg. Čach; 1 ♀, Melnik, 11.VII.1966, leg. Kocourek; 1 ♀, Slančev Brjag, 10.VI.1972, leg. Kocourek; 2 ♀ ♀, Sozopol, 8.-22.VII.1986, leg. Poláček; 1 ♀, Sozopol, 25.VI.1978, leg. Dohnal; 2 ♀ ♀, Sandanski, 14.+22.VII.1966, leg. Kocourek.

**C r o a t i a** : 1 ♀, 1 ♂, Krk, V.1998, leg. Drak; 2 ♀ ♀, Crna Gora, Bečići p. Budva env., 1.-14.VII.2002, leg. Bulirsch; 1 ♀, Dalmatia, Ciave, VII.1964, leg. Gürtler; 1 ♀, Pelješac Žuljana, 12.VII.2001, leg. Mavrtil; 4 ♀ ♀, 3 ♂ ♂, Insel Krk, 1967, ex coll. Max Schwarz; 1 ♀, Insel Krk, 30.V.1978, leg. Fuss; 2 ♀ ♀, 4 ♂ ♂, Insel Hvar, 20.VI.1962, leg. Kusdas; 1 ♀, 1 ♂, Split, 9.VI.1962, leg. Kusdas; 1 ♀, Split, 25.VI.1953, leg. Hamann; 1 ♂, Baška, VIII.1970, leg. Heinrich; 1 ♂, Dalmatia, Krk, Baška, 7.-20.VII.1984, leg. Tiefenthaler; 1 ♀, 3 ♂ ♂, Insek Krk, leg. Mader; 1 ♂, Istria, Insel Vegilia, leg. Mader; 1 ♂, Dubrovnik, VI.1974, leg. Deneš; 2 ♀ ♀, Bresë (near Rijeka), VII.1982, leg. Němec; 3 ♀ ♀, Dalmatia, Omis, 19.-26.VII.1979, leg. Tiefenthaler; 1 ♀, Dubrovnik, VI.1977, leg. Deneš; 1 ♀, Baška, VIII.1971, leg. Heinrich; 1 ♀, Krk, 18.VII.1980, leg. ?; 1 ♀, Molunat, coll. Kocourek; 1 ♀, Isl. Rab, 3 km NW Lopar, 12.-22.VIII.2010, M. & T. Halada; 1 ♀, Dalmatia, 18.VI.1962, leg. J. Gusenleitner; 1 ♀, 2 ♂ ♂, Dalmatia, Hvar, 16.-19.VI.1962, leg. J. Gusenleitner; 1 ♂, Dalmatia, Hvar, 17.VI.1962, leg. Kusdas; 1 ♀, Istria, Rovinj 2 km SE, 4.VII.1986, leg. J. Gusenleitner; 1 ♀, Istria, Portorož, VII.1996, leg. Parré; 1 ♀, Trieste, Umag, 1300-1500m, 10.VIII.1984, leg. Zeller; 1 ♀, Dalmatia, Biuprod, 1.VII.1986, leg. Hoffer.

**C z e c h R e p u b l i c** : 3 ♀ ♀, Bohemia mer., Č. Budějovice N. Homole, 9.+13.VIII.2015, leg. Snižek; 1 ♀, Moravia SE Bzenez voi., cvičište PP, 48°57'N 17°18'E, 200m, 22.VI.2012, leg. Ma. Halada. 4 ♂ ♂, Bohemia, Č. Budějovice, N Homele, 17.+29.VII.2014, leg. Snižek; 1 ♂, Bohemia, Č. Budějovice, N Homele 4.VIII.2014, leg. Snižek; 1 ♀, Moravia-S, Popice, Znojmo, 48°49'N 16°01'E, 280m, 16.VII.2015, leg. M. Halada; 1 ♀, Moravia-S, Brno-Holásky, 26.VII.-4.VIII.1998, leg. Trojan; 1 ♀, Moravia-S, Brno-Ivanovice, 15.VII.1998, leg. Trojan; 1 ♀, Moravia-S, Kuželov, 1.VIII.1998, leg. Sillinger; 1 ♀, Moravia, Břeclav, 3.-6.VII.1993, leg. Háva; 2 ♀ ♀, Moravia, Divia, 6.VIII.1991, leg. Pádr; 1 ♀, Lhota u P., 1.VII.1997, leg. Deneš; 8 ♀ ♀, 6 ♂ ♂, Bohemia, Č. Budějovice, N Homole, 14.VII.-4.VIII.2014, leg. Snižek; 1 ♀, Moravia, Znojmo, Havraniki, 48°49'N 16°00'E, 320m 27.VI.2012, leg. Ma. Halada; 1 ♀, Moravia-S, Brno-Mokra Hora, 250m, 49°25.2'N 16°35.7'E, 15.VI.2007, leg. Řiha; 1 ♀, Moravia-S, Brno-Holásky, 26.VII.-4.VIII.1998, leg. Trojan; 1 ♀, Bohemia-S, Třeboň, 9.VIII.2013, leg. Tichý; 2 ♀ ♀, Moravia, Holice, 23.+27.VII.1953, leg. Bernardova; 1 ♀, Moravia, Hr. Voda, 1.VIII.1954, leg. Palásek; 1 ♂, Moravia, unreadable, 10.VII.1991, leg. Pádr; 3 ♀ ♀, vel. Kamanec, 7.VI.1996, leg. Odehnal; 1 ♀, Velky Kamenec, 31.VII.1997, leg. Pádr; 1 ♂, Kamenice, 22.VI.1961, leg. Pádr.

**F r a n c e** : 2 ♂ ♂, Corse, Algajola Dün., 1.-11.1997, leg. Wolf; 1 ♀, Feyance, 28.VII.1963, leg. Diller; 1 ♀, Côte D'Azur, Agay, Meereseiveau, 31.VII.1981, leg. Pfeiler.

**G e o r g i a** : 1 ♂, Gruzia, Gagra, 14.VII.1965, leg. Poláček; 1 ♀, 1 ♂, E Tbilisi, lori river, S Sagarejo, 19.VI.2015, leg. Snižek.

**G r e e c e** : 3 ♀ ♀, 1 ♂, Karpathos Othos, 520m, 35.32N 27.09E, 17.VI.2012, leg. Tiefenthaler; 1 ♀, 1 ♂, Karpathos, 200m ob Lefkos, 35.35.21N 27.04E, 19.-21.VI.2012, leg. Tiefenthaler; 2 ♀ ♀, 2 ♂ ♂, Rhodos, Kolymbia, 36.14N 29.09E, 24.-31.V.2013, leg. Tiefenthaler; 1 ♀, Samos, Pythagorio, 15 km W Koumaradei, 400m, 37.42N 26.50E, 11.-12. VI.2007, leg. Tiefenthaler; 1 ♀, Karpathos, Lefkos, 7.VI.2004, leg. Tkalku; 1 ♀, Karpathos, Amopi, 4.VI.2004, leg. Tkalku; 1 ♀, Kreta sept-occ., Kolymbari, 21.VI.2002, leg. Tkalku; 1 ♀, Tessalia province, Mt. Cssä centr., 8.VIII.2010, leg. J. Halada; 1 ♀, Kreta, Georgiopolis, 19.VI.-4.VII.2001, leg. Hradský; 1 ♀, Pelopones, Zachlorou Kalavr., 13.-28.VI.1958, leg. Klimesch; 1 ♀, Klnetra env., 3.VII.1997, leg. Deneš; 3 ♂ ♂, 30 km S Karpensis, 4.VII.2014, leg. J. Halada; 1 ♂, Samos, Pythagorio, Umg. Hotel Maritsa Bay, 37.42N 26.57E, 18.-31.V.2000, leg. Tiefenthaler; 1 ♂, Pelopones, Argolis Kathenias Geb., SW Karia, 37°38'N 22°32'E, 900m, 19.VII.1990, leg. Rausch; 1 ♂, Kreta, Lasinthiou, Dikti-Geb., NW Mathokotsana, 35°06'N 25°33'E, 900m, 11.VI.1993, leg. H. & R. Rausch; 1 ♂, 28 km NNE Kilbis, 600m, 22.VII.1998, leg. Wimmer; 2 ♀ ♀, 3 ♂ ♂, Crete, Heraklion, 22.+25.V.1963, leg. Max Schwarz; 1 ♀, Loutrekia, Golf von Korinth, 25.V.1962, leg. Max Schwarz; 1 ♀, Loutrekia, 23.V.1964, leg. Max Schwarz; 2 ♀ ♀, Pelopones, Loutraki, 25.V.1962, leg. Hamann;

- 1 ♀, Pelopones, Alt Korinth, 31.V.1964, leg. Max Schwarz; 1 ♀, Athen, Akropolis, 9.VI.1962, leg. Max Schwarz; 1 ♀, 4 ♂, Insel Mykonos, Kyklad. Strand, 7.+8.VI.1962, leg. Max Schwarz; 2 ♀ ♀, 2 ♂ ♂, Insel Mykonos, Kyklad., 7.+8.VI.1962, leg. Hamann; 1 ♂, Crete, Sita, 17.V.1963, leg. Max Schwarz; 1 ♂, Kreta, Lassithi-Hochebene, 17.VI.1993, leg. Tiefenthaler; 1 ♂, Pelopones, 5 km S Monemvasia Lakonia, 22.V.1985, leg. Tiefenthaler; 3 ♂ ♂, Preveza env., 25.VI.1997, leg. Deneš; 6 ♂ ♂, Tinos, Panormos, 8.VI.1979, leg. H. Malicky; 1 ♂, Andros, Ateni, 11.VI.1979, leg. H. Malicky; 1 ♂, Tinos, Kardiani, 8.VI.1979, leg. H. Malicky; 1 ♂, Andros, Stenies, 11.VI.1979, leg. H. Malicky; 1 ♂, Parga env., 4.-14.VI.1996, leg. Kadlec; 1 ♂, Crete, Myrtos, 2.-4.VI.1990, leg. Kudrna; 1 ♂, Pelopones, 40 km N Tripoli Scotini, 3.VII.1996, leg. Ma. Halada; 1 ♂, Samos, Pandroso, 13.VI.2000, leg. Zarre; 1 ♀, Crete, Limni Kourna, 5-20m, 26.V.-10.VI.1998, leg. Probst; 2 ♀ ♀, Korfu, Roda, 20.VI.1998, leg. Boness; 1 ♀, Akrokorinth, 27.VI.1966, leg. Aigner; 1 ♀, Chalkidiki, Sithonia Sarti, 27.VII.-11.VIII.1986, leg. Tiefenthaler; 2 ♀ ♀, Klnetra env., 3.VII.1997, leg. Deneš; 2 ♀ ♀, Preveza env., 25.VI.1997, leg. Deneš; 2 ♀ ♀, Pelopones, Argolis Ktonia-Geb., SW Karia, 37°38'N 22°32'E, 900m, 19.VII.1990, leg. Rausch; 1 ♀, Crete, Iraklion, Südküstenberge, N Sikotógos, 35°01'N 25°31'E, 500-600m, 13.VI.1993, leg. H. & R. Rausch; 2 ♀ ♀, Récko Preveza, VII.1997, leg. Hradský; 1 ♀, Pelopones, Sparti 6 km bor., 12.VI.1989, leg. Němec; 3 ♀ ♀, 1 ♂, Tinos, Panormos, 8.VI.1979, leg. H. Malicky; 4 ♀ ♀, 2 ♂ ♂, Insel Andros, Gavrion, 30.V.1973, leg. H. Malicky; 2 ♀ ♀, 4 ♂ ♂, Pelopones, 40 km N Tripoli Scotini, 3.VII.1996, leg. Ma. Halada; 1 ♀, Pelopones, 40 km S Argos P. Astros, 4.VII.1996, leg. Ma. Halada; 1 ♀, Altkorinth, 31.V.1963, leg. J. Gusenleitner; 1 ♀, Altkorinth, Pelopones, 31.V.1964, leg. J. Schmidt; 1 ♀, Kartherion, 25.VII.1974, leg. H. Malicky; 1 ♂, Kreta, Heraklion-Strand, 22.V.1963, leg. J. Gusenleitner; 1 ♀, Serifos, Koutalas, 37°09'N 24°28'E, 400m, 13.V.1990, leg. H. Malicky; 1 ♀, Pelopones, Tiryns, N Nafplio, 18.VII.1990, leg. Rausch; 1 ♀, Pelopones, 20 km W Kalamata, Petalidi, 6.VII.1996, leg. Ma. Halada; 1 ♀, 10 km NE Ioannina, 1.VII.1996, leg. Ma. Halada; 1 ♀, Patra, 25.VI.1986, leg. Snäll.
- H u n g a r y :** 2 ♀ ♀, Örkény, 16.VII.2006, leg. M. Halada; 1 ♀, Pákozd E Székesfehérvár, 47°13'N 18°31'E, 150m, 25.VI.2015, leg. M. Halada; 1 ♀, SW Kisbér, 21.VI.2015, leg. Z. Haladova; 1 ♀, Kecskemet Kiskunsagi National Park, Bocsa-Bugac, 100m, 46°40'N 19°40'E, 13.VII.1995, leg. Kust & Schubert.
- I r a n :** 1 ♀, 1 ♂, Mazandaran province, 20 km S Amol, 30°14'N 52°22'E, 430m, 6.VI.2014, leg. J. Halada; 1 ♂, Mazandaran province, Kojuk env., 36°23'N 51°40'E, 1560m, 7.VI.2014, leg. J. Halada; 1 ♂, Lorestan province, 10 km SW Dorud, 33°27'N 49°05'E, 1520m, 27.V.2014, leg. J. Halada; 1 ♂, 5 km E Nowshar, 4.VI.1977, leg. Holzschuh & Ressler.
- I t a l y :** 1 ♀, Sicilia, 55 km E Trapani, Castellammare env., 9.-12.VI.2002, leg. J. Halada; 1 ♀, Sardegna N, Nuoro env., 25.-26.VI.2000, leg. J. Halada; 2 ♂ ♂, Sardegna-W, 50 km E Nuoro, Orosei env., 27.V.2013, leg. J. Halada; 2 ♂ ♂, Sardegna-W, Brunella env., 40°41'N 09°41'E, 70m, 28.V.2013, leg. J. Halada; 1 ♂, Sardegna-NW, Sassari province, Torre del Porticcio, camp coastal vegetation, 26.-28.V.2007, leg. Baňar; 1 ♂, Cagliari, 11.VII.1959, leg. Wolf; 1 ♂, Sardinia, Isola Rosa, Badesi, 5.VII.2012, leg. Martin Wolf; 1 ♂, Sicilia, Monti Nebrodi, ~500m, ~10 km S Fratello, 12.VI.2012, leg. J. Halada; 1 ♂, Sicilia, Monti Nebrodi, 1200m, 8 km NE Floresta, 11.VI.2012, leg. J. Halada; 1 ♂, Sicilia, Mt. Madonie S, ~600m, Petralia Sot env., 16.VI.2012, leg. J. Halada; 1 ♀, Friaul, Interneppo env., 13.VII.1953, leg. Koller; 1 ♂, Verona, San Zeno, 26.VII.1972, leg. ?; 1 ♂, Friaul, Mena bei Somplago, 15.VII.1953, leg. Koller; 1 ♂, Noli (Savona), Liguria, 16.VI.1961, leg. Kudas; 1 ♂, Apulien, Siponto, 7.VI.1976, leg. ?; 3 ♀ ♀, 4 ♂ ♂, Sicilia, 55 km E Trapani, Casellammare env., 9.-12.VI.2002, leg. J. Halada; 1 ♀ 1 ♂, Sicilia, Mistretta, Mercuore, 700m, 11.-20.VI.1952, leg. Klimesch; 1 ♂, Sardegna, Calagonona, VII.1979, leg. Kapfer; 1 ♂, Sicilia, ~20 km S Palermo, 800m, 18.VI.2012, leg. J. Halada; 1 ♀ Lazium, Sperlonga, 10.-20.VI.1996, leg. Wolf; 1 ♀, Udine, 11.VII.1978, leg. ?; 5 ♀ ♀, Cagliari, 11.VII.1959, leg. H. Wolf; 1 ♀, Sicilia, 35 km SW Ragusa beach, 18.-22.VI.2002, leg. J. Halada; 1 ♀, Friaul, Mt. Simeone bei Interneppo, 16.VII.1953, leg. Koller; 1 ♂, Sperlonga, 10.-20.VI.1996, leg. Wolf.
- J o r d a n :** 7 ♂ ♂, N Shuna env., 29.-30.IV.1996, leg. Ma. & Mi. Halada; 1 ♂, Rawayshid, 23.IV.1996, leg. Ma. Halada.
- K a z a k h s t a n :** 2 ♀ ♀, 1 ♂, SE Tchilik env., 20.VI.1992, leg. J. Halada; 1 ♀, 3 ♂ ♂, Vanovka, 80 km E Djambul, 25.+30.VI.1992, leg. Jirousek; 1 ♀, Lake Alalok, Koktuma, 22.VI.1995, leg. Múčka; 1 ♀, ridge Malaysari, 144 km N Alma-Ata, 24.VI.1992, leg. Jirousek; 1 ♀, 1 ♂, Alma-Ata, 30 km záp. Aksay, 16.VII.1981, leg. Kocourek; 1 ♀, Alma-Ata, 25.VI.1992, leg. Deneš; 3 ♂ ♂,



- Kuyuk, 40 km SW Djambul, 1.VII.1992, leg. Mi. Halada; 1 ♂, Lepsi, 46.4°N 78.8°E, 19.-20.VI.1995, leg. J. Halada; 1 ♂, Lepsi 8 km SE, 18.VI.1992, leg. M. Halada.
- K y r g h y z s t a n : 1 ♀, Talasskaya Obl., Toktogul Stausee, 20 km W Toktogul, 41°52'N 72°43'E, 950m, 1.+5.VI.1995, leg. H. & R. Rausch, P. Ressler; 1 ♀, Jalaj Abad, Distr. Nookan, Tal des Baches Beketschal, 41°32'10"N 72°29'36"E, 800-930m, 22.-23.VI.2010, leg. E. & J. Hüttinger; 1 ♀, Jal Abad, Distr. Nookan, Tal des Beketschal, 41°32'13"N 72°29'32"E, 830-1100m, MSL, 4.-5.VI.2008, leg. H. & R. Rausch; 1 ♀, Kirghizky Mts., Ala Archa river, Kashka-Suu, 1650m, VII.2000 leg. Gurko; 1 ♀, Tshatkal Mt. R. Shikaftar, VII.2000, leg. Gurko; 1 ♀, Kirghizky Mts., Tschon-Aryk, 900m, 18.VI.2001, leg. Gurko; 1 ♀, Frunse 15 km již Čia-Arik, 8.VII.1981, leg. Kocourek; 3 ♂ ♂, Kirghizky Mt. R. Uzun-Bulag, Ala Archa river, VII.2000, leg. Gurko; 2 ♂ ♂, Chamanli Sai, 41.2°N 71.8°E, 30.V.1995, leg. Múčka; 1 ♂, Tash-Arik, 11 km E Talas, 4.VII.1992, leg. M. Halada; 1 ♂, Kirghizky Mt., 1800m, Ala-Archa river, Kashkasi, 2.VIII.1999, leg. Gurko; 1 ♂, 30 km S Kirovskoe valley, river Kara Buura, Tian Shan Mts., 1500m, Talasskiy Alatan Ridge, 26.-28.IV.1994, leg. Cechovsky; 1 ♂, Kirghizky Mts., Ala-Archa river, Kashka-Suu. 1650m, V.2000, leg. Gurko; 1 ♀, Tchatkal Mt. R., Khodzha-Ata river canyon, 41°50'N 71°56'E, 1400m, 28.VIII.1998, leg. Makogonova;
- M a c e d o n i a : 1 ♀, Oteševo, Petrina plana, 19.VII.1965, leg. Aigner; 1 ♂, Lake Dojran, 10.VII.1968, leg. Pádr; 1 ♂, Ohrid, 16.VII.1995, leg. Aigner; 1 ♀, Matka, Treska Schlucht, 30.VI.-4.VII.1956, leg. Klimesch.
- M o n t e n e g r o : 1 ♂, Ulcinj, Doni Štoj env., 6.-7.VI.2012, leg. Krobot; 2 ♀ ♀, Crna-Gora-Ulcinj, 15.-20.VII.1967, leg. Pádr; 3 ♀ ♀, Pržno, VII.1976, leg. Niedl.
- M o r o c c o : 3 ♂ ♂, Amouguer, 50 km W Rich, 23.V.1995, leg. Mi. Halada; 2 ♂ ♂, 5 km SE Azron, 31.V.1995, leg. Ma. Halada; 1 ♂, 15 km SE Sefrou, 26.-27.V.1995, leg. Ma. Halada; 1 ♂, Bhalil, 10 km NW Sefrou, 28.V.1995, leg. Ma. Halada; 1 ♂, Moulay Bousselham, 21.-22.V.1995, leg. Burlisch; 2 ♂ ♂, 10 km N Rich, 23.VI.1995, leg. Ma. Halada; 1 ♀, 2 ♂ ♂, Oukaimeden, 2500m, 25.-27.VI.1987, leg. Max Schwarz; 1 ♂, Tizi-n-Tichka, 2200m, 1.VII.1987, leg. Max Schwarz; 1 ♂, Tizi-n-Tichka, 2000m, 2.VII.1987, leg. Max Schwarz; 1 ♀, Ht. Atlas, Oukaimeden, 2600-2800m, 8.VII.1975, leg. J. Gusenleitner; 1 ♀, Ht. Atlas, Agaiouar, 1500m, 10.VII.1975, leg. J. Gusenleitner; 1 ♂, Ht. Atlas, 17 km NE Oukaimeden, 1500m, 9.VII.1975, leg. J. Gusenleitner; 1 ♂, Azrou, Zedernwald, 1600m, 7.VII.1975, leg. J. Gusenleitner; 1 ♂, Ht. Atlas, N Oukaimeden, 600-2300m, 1.VII.1977, leg. H. & U. Aspöck, H. & R. Rausch, P. Ressler.
- P o r t u g a l : 1 ♂, Algarve, Hortas do Tabual, 5 km SE Vila do Bispo, 18.V.1995, leg. J. Gusenleitner.
- R o m a n i a : 1 ♀, unreadable, 1994, leg.?: 1 ♂, Dobrogea, camrana., 15.VII.1994, leg. Rzikly; 1 ♀, Dobrogea, Hagiena, 3.VII.1982, leg. Szekely; 1 ♀, Caracal, 1917, leg. Hanslmayer; 11 ♀ ♀, Dobrogea camrana, Petil, 7.+9.VII.1994, leg. Szekely.
- S e r b i a : 1 ♂, Pozarevac, 20.VI.2002, leg. Snižek. 1 ♀, Vojvodina, Lukino Selo b. Z., 2.-4.VI.1986, leg. Tiefenthaler.
- S l o v a k i a : 1 ♀, Vinansky Hrad, 21.VI.1993, leg. Urban; 1 ♀, Král. Chlmec. 1997, leg. Odehnal; 1 ♀, Kováčov, 7.VII.1994, leg. Deneš; 1 ♂, Remetske Hámre, 10.VII.2000, leg. Plecháč; 2 ♀ ♀, 2 ♂ ♂, Somotor, 6.VII.1952, leg. Kocourek; 12 ♀ ♀, 2 ♂ ♂, Somotor, 1959-1969, leg. Kocourek; 2 ♂ ♂, Kováčov, 7.VII.1997, leg. Deneš; 6 ♂ ♂, Vihorlat, Remetske Hamry, 21.-28.VII.1997, leg. Pádr; 5 ♂ ♂, Topolníky, 6.VII.1994, leg. Deneš; 1 ♂, Malacky, 5.VII.1994, leg. Deneš; 1 ♂, Plešivec-Ardovo, 15.IX.1997, leg. Pádr; 1 ♂, Zadiál Turna, 20.VII.1987, leg. Pádr; 14 ♀ ♀, 1 ♂, Král. Chlumec, 7.V.1997, leg. Odehnal; 1 ♂, Rem. Hamry, 17.VII.1959, leg. Kocourek; 1 ♂, Pezlnok-Baba, 39.VI.1952, leg. Kocourek; 1 ♂, Rumino, 19.VII.1999, leg. Pleclac; 1 ♂, Sturovo, 1968, leg. Cach; 3 ♂ ♂, Somotor VI.+VII.1952, leg. Kocourek; 3 ♂ ♂, Vihorlat, VII.1990, leg. Černý; 1 ♂, Vihorlat Mts., Pliče env., 25.VII.1992, leg. Prudek; 1 ♀, Somotor, VII.1970, leg. Deneš; 1 ♀, Hájská dolina Turna, 16.VII.1987, leg. Pádr; 1 ♀, Nová Sedlica, VII.1990, leg. Černý; 1 ♀, Vinohrad, VII.1990, leg. Černý; 1 ♀, Vihorlat, VII.1990, leg. Černý; 3 ♀ ♀, Stúrovo, VIII.1965, leg. Kocourek; 1 ♀, Malacky, 7.VII.1995, leg. Deneš; 1 ♀, Kameninske Slanisko (NPR), 1 km S Kamení, 47°52.4-84'N 18°38.65-92'E, 120m, 27.VI.2011, leg. Řiha; 1 ♂, Zadiel-Turňa, 17.VII.1969, leg. Pádr; 1 ♀, Topolníky, 6.VII.1994, leg. Deneš; 1 ♀, Palovo, Mikalov-Kopoček, 8.VII.1991, leg. Pádr; 1 ♀, Gbelce, VI.1953, leg. Kocourek.
- S l o v e n i a : 1 ♂, Portoroz, 24.VII.-5.VIII.1961, leg. Heinrich.

- S p a i n : 1 ♂, Benidorm, 29.III.1975, leg. ?; 1 ♂, Pirineos central, 15 km SW Seo del Urgel, 2 km NW Guils, 1500m, 23.VII.1990, leg. Martin Schwarz; 1 ♀, Estepona, 12.VII.1985, leg. Wimmer; 1 ♂, Province Caceres, Trujillo, 600m, Pto de Miraveis, 11.+12.VI.1996, leg. Tiefenthaler; 1 ♀, 5 km NE Tarifa (b.Algeciras), 20.VI.1974, leg. Aigner; 1 ♀, Madrid, VI.1990, leg. Parque; 1 ♀, 70 km v Albacete, 27.VI.1974, leg. Aigner; 1 ♀, Jerez de la Frontera 5 km S, 18.VI.1974, leg. Aigner; 2 ♀ ♀, Port Bou, 10.-20.VII.1978, leg. Wimmer; 1 ♀, Malaga, 13.VI.1990, leg. M. Halada.
- S y r i a : 1 ♂, 20 km NE Latakia, 25.V.1996, leg. Mi. Halad; 1 ♂, Homs Al-Muharram env., 7.VI.2000, leg. Deneš jun..
- T a j i k i s t a n : 1 ♀, 1 ♂, Taškent, Čirčik 40 km vych., 4.VII.1981, leg. Kocourek; 1 ♂, Bulbulčašma, Babatag chrebet, 23.V.1974, leg. Deneš; 1 ♀, Taškent 40 km vych., Čirčik, 4.VII.1981, leg. Kocourek; 1 ♀, Karatag, VI.1986, leg. Deneš.
- T u r k e y : 2 ♀ ♀, 2 ♂ ♂, vil. Eskisehir Sakari Ilica, near Gümele, 6.-9.VII.1997, leg. Prudek & Řiha; 1 ♀, Adana province, Feke env., 21.-24.VII.2000, leg. Prudek; 1 ♀, Silifke, 26.V.2001, leg. Snižek; 1 ♀, 15 km E Malatya, 27.VI.2000, leg. M. Halada; 1 ♀, 25 km W Antalya, 330m, 36°13'N 35°51'E, 27.VI.2001, leg. Straka; 1 ♀, Denizli, 10 km NE Denizli, 37°56'N 29°07'E, 290m, 4.VII.2006, leg. M. Halada; 1 ♀, 60 km SW Malatya Erkenek, 26.VI.2000, leg. M. Halada; 5 ♂ ♂, Burdur, 5 km NE Yesilova, 37°35'N 29°55'E, 1060m, 6.VII.2006, leg. J. Halada; 2 ♂ ♂, Muradye, 2.VII.2000, leg. M. Halada; 2 ♂ ♂, Manisia, 15 km SSE Salihli, 38°26'N 28°19'E, 170m, 2.VII.2006, leg. J. Halada; 1 ♂, Denizli, 35 km SSE Denizli, 37°37'N 29°17'E, 970m, 5.VII.2006, leg. M. Halada; 1 ♂, Sirnak province, 25 km SW Sirnak, 37.67°N 42.31°E, 1600m, 23.VI.2010, leg. Mi. Halada; 1 ♂, Canakkale, Gellbou env., 18.VI.1998, leg. J. Halada; 1 ♂, vil Bursa Caglian env., 10-14.VII.1997, leg. Prudek & Řiha; 1 ♂, Burdur, 20 km SW Burdur, 37°37'N 30°09'E, 940m, 7.VII.2006, leg. J. Halada; 1 ♂, Akyaka env., 37°03'N 28°19'E, 40m, 16-27.V.2001, leg. Barkák & Kubin; 1 ♂, Tatvan, Van G., 1.VII.2000, leg. M. Halada; 1 ♂, SE Elazig Hazar Gölü, 29.VI.2000, leg. M. Halada; 1 ♂, Seydisehir Teke Gec., VII.2000, leg. M. Snižek; 1 ♀, Insel Mut, 10.VI.1978, leg. Max Schwarz; 2 ♀ ♀, Urfá, Urfá env., 30.V.1978, leg. Max Schwarz; 2 ♂ ♂, Konya, Karaman 10 km S, 19.VI.1985, leg. Max Schwarz; 1 ♂, Beysehir, 17.VI.1966, leg. J. Schmidt; 4 ♂ ♂, 20 km W Van, 5.VII.1997, leg. Ma. Halada; 1 ♂, Konya, Mt. Avdos/Eregli, 1600m, 7.VIII.1991, leg. M. Halada; 1 ♂, 25 km E Malatya Kopeksiz, 8.VII.1997, leg. Ma. Halada; 2 ♂ ♂, vil. Eskisehir Sakari Ilica, near Gümele, 6.-9.VII.1997, leg. Prudek & Řiha; 2 ♂ ♂, Beysehir, 13.-19.VI.1966, leg. Hamann; 1 ♂, Konya, 30 km S Aksehir, 24.VI.1998, leg. J. Halada; 1 ♂, Nemrut Dagi Karadut, 2.VII.1993, leg. Mi. Halada; 1 ♂, Urfá, 2.VI.1968, leg. J. Gusenleitner; 2 ♂ ♂, Muradiye, 3.VII.2000, leg. M. Halada; 1 ♀, 15 km N Midyat, 22.VI.1997, leg. Ma. Halada; 1 ♀, Porsuk Basaji Sebran, 8.VII.1993, leg. Mi. Halada; 1 ♀, Urfá, 31.V.1970, leg. J. Gusenleitner; 1 ♀, Izmir env., 20.VI.1998, leg. J. Halada; 1 ♀, Muradiye, 3.VII.2000, leg. M. Halada; 1 ♀, SE Elazig Hazar Gölü, 29.VI.2000, leg. M. Halada; 1 ♂, Pamukkale, 8.-9.VI.1964, leg. J. Gusenleitner; 1 ♂, Mut, 8.VI.1968, leg. J. Gusenleitner; 1 ♀, Izmir, Dikili env., 19.VI.1998, leg. J. Halada; 1 ♀, Izmir env., 20.VI.1998, leg. J. Halada.
- T u r k m e n i s t a n : 2 ♀ ♀, Nebit Dag, 25 km NW Jebel, 28.IV.+22.V.1993, leg. M. Halada; 1 ♀, Sandikatzi env., 3.-13.V.1993, leg. J. Halada; 10 ♂ ♂, Aschabat 40 km W Firyuza, 6.VI.1993, leg. M. Halada; 1 ♂, Aschabad env., 10.VI.1993, leg. M. Halada.
- U k r a i n e : 1 ♀, 4 ♂ ♂, Crimea, Eupatoria, 26.VI.1998, leg. Gurko; 1 ♀, Crimea, Simferopol, Anatra, VII.2000, leg. Gurko; 2 ♂ ♂, Crimea, Simferopol, 12.VII.1999, leg. Gurko; 2 ♂ ♂, Crimea, Kerch, 25.VI.1996, leg. Gurko; 1 ♂, 1 ♂, Crimea, Simpheropol, 8.V.1999, leg. Gurko; 1 ♂, Crimea, Sipheropol, 30.VI.1999, leg. Gurko; 1 ♂, Crimea, Eupatoria, 10.VII.1997, leg. Gurko; 1 ♀, 2 ♂ ♂, Crimea, Eupatoria, 22.+25.VI.1999, leg. Gurko; 1 ♀, Crimea, Jalta, 8.+10.VII.1985, leg. Deneš; 1 ♀, Crimea, Simpheropol, 28.VIII.1999, leg. Gurko.
- U z b e k i s t a n : 3 ♀ ♀, 1 ♂, Tchatkal Mts., Bashkylsai river canyon, 41°11'N 69°50'E, 1300m, 5.VIII.1999, leg. Zonstein & Makogonova; 1 ♀, W-Zeravshan Mts., Dzhindydaria valley, 39°12'N 67°16'E, 1300m, 3.VII.1999, leg. Makogonova; 1 ♀, Kashkadaria Reg., Shakhrisabz city, 39°03'N 66°50'E, 650m, 22.VII.1999, leg. Zostein; 1 ♀, Vil. Syr Darja, am Ufer des Syrdar'ya, 40°53'52"N 68°42'22"E/GPS, 330m, 13.-14.VI.1997, leg. H. & R. Rausch; 1 ♀, Yangikichlak, 100 km NW Djizak, 40.3°N 66.9°E, 25.V.1994, leg. J. Halada; 1 ♀, Aktas (Taškent), 18.VII.1979, leg. Dvoršák; 1 ♀, Mrts.-Muratau, 40.10°N 65.35°E, VI.1994, leg. Navoi.

***Sceliphron fistularium* (DAHLBOM, 1843) (9 ♀ ♀)**

**F r e n c h G u i a n a :** 1 ♀, NE Mount de Kaw, Camp Caiman, 23.-31.VIII.2006, leg. Snižek; 1 ♀, NE Mana, 16.VIII.2006, leg. Snižek.

**P a n a m a :** 2 ♀ ♀, Banno, Colorado Island, 9°09'N 79°51'W, 30-150m, 7.II.-24.III.1986, leg. H. Malicky.

**V e n e z u e l a :** 3 ♀ ♀, Maracay, leg. Stejskal; 2 ♀ ♀, East Bolivar Caroni-river, 120 km W Sta. Elena de Uairen, 22.-24.I.1996, leg. Plass.

***Sceliphron formosum* (F. SMITH, 1856) (2 ♀ ♀)**

**I n d o n e s i a :** 1 ♀, Manna, Bengkulu distr., IX.2013, leg. Schachl.

**J a p a n :** 1 ♀, Chojyagahara, Yamagata pref., 24.VII.1965, leg. Itami.

***Sceliphron fossuliferum* (GRIBODO, 1895) (14 ♀ ♀, 1 ♂)**

**B e n i n :** 1 ♀, Cove, Zou river, 16.IV.2000, leg. J. Halada.

**C e n t r a l A f r i c a n R e p u b l i c :** 2 ♀ ♀, 45 km E Nola (GPS), 03°32'N 16°26'E, 8.IV.2009, leg. J. Halada; 1 ♀, ~40 km E Bambio, 03°59'N 17°11'E, 490m, 9.XI.2012, leg. J. Halada; 1 ♀, 90 km NE Nola (GPS), 04°07'N 16°37'E, 560m, 22.IV.2009, leg. J. Halada; 1 ♀, 15 km S Mbaiki, 420m, 03°44'N 18°00'E, 25.XII.2009, leg. J. Halada; 1 ♀, 150 km NWW Mbaiki, 04°03'N 17°02'E, 620m, 14.VI.2009, leg. J. Halada; 1 ♀, 70 km NNE Bangui, 445m, 04°57'N 18°46'E, 24.-28.XI, 2010, leg. J. Halada.

**M a l a w i :** 1 ♀, Nkhotakota, lake Malawi, 2.I.2002, leg. J. Halada.

**N i g e r i a :** 1 ♀, 26 km SEE Abuja, 09°06'N 07°45'E, 400m, 14.V.2011, leg. J. Halada.

**Z a m b i a :** 2 ♀ ♀, 168 km E Mwinilunga, Lumwana East env., 7.XII.2004, leg. Snižek & Tichy; 1 ♀, 50 km E Mwinilunga, 11°43'S 24°47'E, 1400m, 2.XI.2008, leg. M. Halada; 1 ♀, 50 km W Chingola, 1.-2.I.2003, leg. J. Halada.

**Z i m b a b w e :** 1 ♂, 40 km S Chipinge, Mt. Selinda, 13.XII.1998, leg. M. Halada.

***Sceliphron funestum* KOHL, 1918 (19 ♀ ♀)**

**G r e e c e :** 2 ♀ ♀, Epidauros, Korfos, 15.-27.IX.1986, leg. Wolf, det. K. Schmidt; 1 ♀, Pelopones, 20 km E Sparta, AG. Anagiri, 5.VII.1996, leg. Ma. Halada.

**T u r k e y :** 14 ♀ ♀, vil Icel (Mersin), Büyükeceli (Ovacik) env., 50-100m, 14.-18.VII.1998, leg. Řiha & Bezděk; 1 ♀, 45 km N Adana, 37°23'N 35°12'E, 330m, 24.VI.2001, leg. Straka; 1 ♀, SJ Eruh/Siirt, 1100m, 13.VIII.1991, leg. J. Halada, det. Guichard 1992.

***Sceliphron fuscum* KLUG, 1801 (8 ♀ ♀, 4 ♂ ♂)**

**M a d a g a s c a r :** 1 ♀, Antananarivo env., Ivato, 1.-3.VII.2003, leg. Dolin & Andreeva; 2 ♀ ♀, 2 ♂ ♂, Audasibe env., 25.XI.1999, leg. J. Halada; 2 ♀ ♀, Moramango, 80 km E Antananarivo, 5.I.2004, leg. Brantlová & Kubik; 1 ♂, Cap Eat. Nat. Park (Masuala), 27.-30.XII.2003, leg. Dolin, Andeeva & Andreev.

**M a s c a r e n e I s l a n d s :** 1 ♀, Île de la Réunion, Dos d'Ane-Cap Noir, 17.I.2005, leg. Moravec.

**S e y c h e l l e s :** 2 ♀ ♀, La Digue, La Passe Om, 4°21'S 55°50'E GPS, 18.-21.IX.1998, leg. Malicky; 1 ♂, Silhouette, 14.X.1997, leg. Heiss.

***Sceliphron intrudens* (F. SMITH, 1858) (1 ♀, 2 ♂ ♂)**

**I n d o n e s i a :** 2 ♂ ♂, Sulawesi, N Rappang, 7 km E Eurekang, 1.-2.V.1999, leg. Bečvář & Zabranský; 1 ♀, Sulawesi (Celebres), Palu-Valley, 9.V.1955, leg. Hamann, det.v.d. Vecht 1958.

***Sceliphron javanum* (LEPELETIER de SAINT FARGEAU, 1845) (22 ♀ ♀, 7 ♂ ♂)**

- I n d i a** : 1 ♀, Kerala, E Kothamangalam, 10°50.1'N 76°39.1'E, 150m, 1.V.2005, leg. M. Halada.
- I n d o n e s i a** : 1 ♀, Lesser Sundas, Larnaiera v. Lomblen isl., 9.XI.2008, leg. Jakl; 1 ♀, Manna Bengkulu distr., XI.2013, leg. Schachl; 1 ♀, Sundas, Lomblen isl., XI.2006, leg. Obořil; 2 ♀ ♀, West Sumatra, Mont Singgalang, Annaivalley N. P., 60m, VIII.2009, leg. Jakl; 1 ♂, W-Sumatra, Payakumbuh area, Harau Valley, 700m, VIII.2000, leg. Jakl.
- J a v a** : 1 ♀, 2 ♂ ♂, Bogor, Bot. Garden, 250m, 28.I.1961, leg. Hamann; 1 ♀, Bogor, B.P.M.T., 4.V.1956, leg. Harmann, det v.d. Vecht; 2 ♀ ♀, Westend, Insel Pulau, Pentjang, 25.+26.VI.1959, leg. Hamann; 1 ♀, Kosim Bogor BPHT., 7.I.1959, leg. Harmann; 1 ♀, 3 ♂ ♂, Pentjang, 25.VI.1959, leg. Manis; 1 ♂, Udjung-kulon, Küstenwald sweepnet, VI.1959, leg. Hamann.
- L a o s** : 2 ♀ ♀, Hua Phan Prov., Ban Saleui, Phou Pan-Mt., 20°13'30"N 103°59'56"E GPS, 1350-1900m, 21.V.2010, leg. Holzschuh & locals.
- M a l a y s i a** : 1 ♀, Perak, 25 km NE Ipoh, Banjaran Titi Wangsa-mts., Korbu mt., 2100m, 4.-13.III.1998, leg. Čechovský.
- N e p a l** : 1 ♀, Gorkha, 29.V.-3.VI.1999, leg. Kudrna.
- V i e t n a m** : 3 ♀ ♀, Done Nat. Prov. Nan Cattien Res., 6.-18.XI.1989, leg. Soldán; 1 ♀, Thuan Ho Prov., Phan Rang, 20.IV.-7.V.1982, leg. Soldán; 1 ♀, Vung Tau, 30.XI.1988, leg. Bečvář.

***Sceliphron laetum* (F. SMITH, 1856) (6 ♀ ♀, 2 ♂ ♂)**

- A u s t r a l i a** : 2 ♀ ♀, Red Hill, 1955, leg. Holmes; 1 ♀, Batemans Bay, leg. Holmes; 1 ♂, Westaustralia, Karratha, 150 km W Port Hedland, 12.XII.1996, leg. Forster & Lukeneder.
- F i d j i** : 1 ♀, Viti Levu isl., Tavna, 30.III.2010, leg. Safanda.
- I n d o n e s i a** : 2 ♀ ♀, 1 ♂, Tanimbar isl., Yamdena isl., 20 km NE Saumlaki, 150m, IV.2007, leg. Obořil.

***Sceliphron madraspatanum* (FABRICIUS, 1781) (102 ♀ ♀, 146 ♂ ♂)**

**N o t e** : v. d. VECHT & v. BREUGEL (1968: 199) distinguished a number of more or less clearly defined subspecies. This variability is particularly expressed in the extent of the yellow markings. V.d. Vecht wrote: "The presence of populations which are transitional between neighbouring subspecies, as well as the frequent occurrence of aberrant specimens of some of the subspecies, make it impossible to construct a key which could cover all the variations of the colour patterns of the forms recognized here as subspecies". Therefore I do not use the names of these subspecies.

- A f g h a n i s t a n** : 1 ♂, Paghman, 30 km NW Kabul, 2100m, 1.-9.VIII.1962, leg. Vartian.
- B u l g a r i a** : 1 ♂, Slančev Brjag, 28.VI.-14.VII.1971, leg. Pádr.
- C h i n a** : 3 ♀ ♀, 1 ♂, Kunmin, leg. Slapek; 1 ♀, Kunmin, Horki ridlo, leg. Slapak; 1 ♀, Kath. Miss. Naking Hope, 1937, leg. Kitan; 1 ♀, Yunnan Ninglang env., 27.19°N 100.55°E, 6.-10.VII.1992, leg. Becvar; 1 ♂, Yunnan, Dli, 28.V.-9.VI.1994, leg. Kučera.
- C r o a t i a** : 1 ♀, Novi Grad Lanterna, 10.VII.2010, leg. Kafka; 1 ♀, Dalmatia, Makarska Veprik, 5.IX.2013, leg. J. Halada; 1 ♀, Dalmatia, Pirovče, VII.1968, leg. Görtler.
- F r a n c e** : 2 ♀ ♀, Les Baux, 1.VIII.1952, leg. Wolf; 1 ♀, Le Lavandou, leg. Wolf; 1 ♂, Province Bedoin, 25.VI.1990, leg. Peraudin; 1 ♀, 1 ♂, Camarque, Le Sambuc, 4.VIII.1963, leg. Diller.
- G r e e c e** : 12 ♀ ♀, 1 ♂, Aksayi env., 30.VI.1997, leg. Deneš; 1 ♀, Pelopones, 20 km N Pilos Marathopoli, 8.VII.1996, leg. Ma. Halada; 1 ♀, 3 ♂ ♂, Isle of Cos, Marmari, 25.-29.IX.2001, leg. Martin Schwarz; 1 ♀, Insel Kos, Kos Starik-Pselirli, 36.56°N 27.19°E, 29.-31.VIII.2008, leg. Thiefenthaler; 1 ♀, Trakiia Voivodino, 5.IX.1996, leg. Zaykov; 1 ♂, Epeiros, 20 km N Preveza, 29.VIII.1997, leg. J. Halada; 1 ♂, Epeiros, Igoumenitsa, 27.VIII.1997, leg. J. Halada; 1 ♂, Crete, Heraklion, 22.V.1963, leg. Max Schwarz.

- I n d i a** : 2 ♂♂, Maharashtra, Karad, 17°15.3'N 74°10.7'E, 600m, 16.V.2005, leg. M. Halada; 1 ♂, Karnataka, Dandeli, 15°12'N 74°30.9'E, 600m, 14.V.2005, leg. M. Halada; 2 ♂♂, Maharashtra, 30 km W Karad, 17°22'N 73°54'E, 17.VI.2006, leg. Kejval; 1 ♂, Maharashtra, Wai, 700m, 15°55'N 73°54'E, 5.VI.2006, leg. Kejval; 1 ♂, Karnataka, 20 km SE Sagar, 600m, 14°06.37'N 75°08.93'E, 12.V.2005, leg. M. Halada; 1 ♂, Uttaranchal st., 13 km NW Nainital, ~950m, 18.VII.2003, leg. Kejval & Tryzna; 1 ♀, Amritsar, 7.VIII.1970, leg. Nimmervoll.
- I n d o n e s i a** : 1 ♀, C. Moluccas, Obi isl, Seribu Mts., Tapaya, 22 km N Scoast, 22.V.-9.VI.2008, leg. 950m, leg. Jakl; 1 ♀, Ost-Java, Tangkuban prahu 1950, leg. Hamann; 1 ♀, W-Java, Bogor, leg. Hamann; 1 ♀, W-Java, Bogor Umgebung, Gng. Hamba lang, 19.II.1961, leg. Pa Manis; 6 ♂♂, Java, Sindangbarang, 5.I.1960, leg. Sochardjan; 1 ♂, Java, Bogor (Ruderalplatz), 31.VIII.1956, leg. Hanann; 1 ♂, Java, NW Kuck Mauk, 1956, Hamann; 1 ♂, Ost-Java, leg. Hamann.
- I t a l y** : 1 ♂, Sicilia, 25 km E Trapani Castellamare env., 9.-12.VI.2002, leg. J. Halada; 1 ♀, Sicilia, Taormina Naxos, 7.X.1970, leg. Max Schwarz.
- I r a n** : 1 ♂, Hormozga province, 60 km E Banda Abbas, 27°22'N 56°46'E, 125m, 25.V.2014, leg. J. Halada.
- J a p a n** : 2 ♂♂, Minoo, 8.VI.1956, leg. ?; 4 ♂♂, Osaka env., 22.VII.1958, leg. ?; 3 ♂♂, River Calanki, VII.1958, leg. ?; 1 ♂, Osaka, Sumiyoshi, 26.VIII.1957, leg. Ichiro Sato; 1 ♀, 1 ♂, Okinawa pref. Ogimisan, 26.VIII.1979, leg. Nagok & Nagase.
- K y r g h y z s t a n** : 8 ♀♀, Kirghizski Mts., Tchon-Aryk, 900m, 11.VII.2001, leg. Gurko; 2 ♀♀, Kirghizski Mts., Tchon-Aryk, 900m, 18.VI.2001, leg. Gurko; 1 ♀, Ferhana valley near Masy, 3.VIII.2001, leg. Gurko; 1 ♀, Kirghizski Mts., Ala-Archa river, Kashka-Suu, 1650m, VII.2000, leg. Gurko; 1 ♀, 1.5 km E Dzabal-Abad, 850m, 40°55.5'N 73°02'E, 850m, 20.VII.2000, leg. Makogonova.
- L a o s** : 1 ♀, Lao Pako env., 55 km NE Vientiane, 4.V.2004, leg. Kantner; 5 ♀♀, 8 ♂♂, Hua Phan province, Ban Saleui, Phou Pan Mt., 20°13'30"N 103°29'56"E GPS, 1350-1900m, 2010-2013, leg. Holzschuh & locals; 4 ♂♂, 35 km NE Vientiane, Lao Pako env., 50m, 18°10'N 102°52'E. 1.-4.VI.2004, leg. Jendek & Šauša; 1 ♂, Bolikhamsai province, Ban Nape env., 350m, 18°20'N 105°08'E, 7.-16.V.2004, leg. Jendek & Šauša; 1 ♂, Bolikhamsai province, Pakkading, ~300m, 18°20'N 104°00'E, 26.-27.V.2003, leg. Kubán; 3 ♂♂, Vientiane province, Lao Pako, 55 km NE Vientiane near Nam Nqun river, V.2004, leg. Kresl; 1 ♂, Khammouan province, Ban Khoun Ngeun, 18°07'N 104°29'E, 250m, XI.2000, leg. Jendek.
- M a l a y s i a** : 5 ♀♀, 28 ♂♂, Ipoh, 5 km E Tanjung Rambutan, 3.-15.IV.2000, leg. Snižek; 2 ♀♀, 2 ♂♂, Perak, 25 km NE Ipoh, Banjaran Titi Wangsa Mts., Korbu, 4°49'N 101°13'E, ~1200m. 6.-12.V.2001, leg. Řiha; 1 ♀ 1 ♂, Perak, 25 km NE Ipoh, Banjaran Titi Wangsa Mts., Korbu, 4°49'N 101°13'E, ~1200m, 1.-15.IV.2000, leg. Čekovský.
- M o n t e n e g r o** : 1 ♀, Ada Bojane, Ulcinj env., 28.-29.VII.2002, leg. Zieris.
- O m a n** : 2 ♀♀, 2 ♂♂, Ash-Sharqiyah, 25 km SW Sur, Wadi Sulayi, 22°25'N 59°21'E, 130m, 16.X.2013, leg. J. Halada; 5 ♀♀, 6 ♂♂, 17 km W Súr, 15.III.2015, leg. Snižek; 1 ♀, 1 ♂, Ad-Dakhiliyach province, 30 km SW Izky, W Indam, 22°46'N 58°00'E, 480m, 27.III.2015, leg. J. Halada; 1 ♀, 1 ♂, 20 km SW Súr, 22°32'N 59°22'E, 14.III.2015, leg. Černý; 1 ♂, Al-Wusta province, Wadi Warnab, 110m, 18°48'N 56°21'E, 26.III.2015, leg. J. Halada; 1 ♂, Ash Shaqiyah, 25 km SW Súr, Wadi Sulayi, 22°25'N 59°21'E, 130m, 16.IV.2013, leg. J. Halada.
- P a k i s t a n** : 1 ♀, Balochisdtan Tump (90 km W Turbat), 13.-15.IV.?, leg. Becvar.
- R u s s i a** : 1 ♀, Astrachan, IX.1964, leg. Botwald.
- S y r i a** : 1 ♀, 20 km NE Latakia, 25.V.1996, leg. Ma. Halada.
- T a i w a n** : 1 ♀, Yilan province, Chingshui env., 360m 24°61'2"N 121°55'1"E, 28.V.2012, leg. J. Halada.
- T a j i k i s t a n** : 1 ♀, Tigrovaya, Balka reser., 170 km S Dushambe, VIII.2000, leg. Pag; 1 ♀, 10 km S Dbi-Garm Sichicar, VII.2000, leg. Gurko; 1 ♂, Rogun, Surchob river, Sigiry, VII.2000, leg. Gurko.

- T h a i l a n d** : 3 ♀ ♀, Pai (Sopong), 6.-9.VI.1997, leg. Snižek; 2 ♀ ♀, 1 ♂, Loei province, Phu Kradung N.P., 1300m, 16°53'N 101°47'E, 11.-15.V.1999, leg. Řiha; 1 ♀, Chumphon province, Pha To env., 1.-11.V.1998, leg. Prudek & Šigut; 1 ♀, 4 ♂ ♂, Nan, außerhalb Mae Charim NP Eingang, 18°36'0"N 100°38'34"E, 260m, 15.+23.V.2012, leg. E. & J. Hüttinger; 1 ♂, Nan, Ban Namwa, 8 km S Mae Charim, 18°38'30"N 101°0'40"E, 260m, 20.V.2012, leg. E. & J. Hüttinger; 1 ♂, Mae Hong Son province, Soppong env., 600m, 28.V.-2.VI.1999, leg. Řiha.
- T u r k e y** : 2 ♂ ♂, Akyaka, 37°03'N 28°20'E, 3m, pasture+saltymeadow, IX.2012, leg. Barták; 1 ♂, Akyaka env., 37°03'N 28°19'E, 40m, 16.-27.V.2011, leg. Barták & Kubik.
- T u r k m e n i s t a n** : 1 ♀ ♀, 16 ♂ ♂, Aschabat 15 km N, 25.-31.V.1993, leg. M. Halada; 1 ♀, Tzardjou 40 km N Denev, 9.VI.1993, leg. M. Halada; 1 ♀, Aschabat 20 km E Annau, 3.VI.1993, leg. M. Halada; 1 ♂, Tzarschanga, 45 km NE Karlyuk, 6.V.1993, leg. J. Halada.
- U n i t e d A r a b E m i r a t e s** : 6 ♀ ♀, 1 ♂, Al Ain, IV.-V.1998, leg. Gillet.
- U k r a i n e** : 1 ♂, Crimea, Eupatoria, 28.VI.1999, leg. Gurko.
- U z b e k i s t a n** : 1 ♀, Ugam Mt.R., E-slope Sidzhaksai valley, 41°41'N 70°03'E, 1200m, 27.VII.1999, leg. Makogonova; 1 ♀, Syrdarja, 50 km SW Taikent, 30.VI.1997, leg. Kledcha; 1 ♀, 2 ♂ ♂, Papngan, 20 km NW Kokand, 41.2°N 70.6°E, 12.V.1994, leg. Ma. Halada; 6 ♂ ♂, Kashkadaria Reg., Shakhrisabz City, 39°03'N 66°50'E, 650m, 22.VII.1999, leg. Zonstein & Makogonova; 3 ♂ ♂, 50 km W Pahtakor, 40.3°N 67.4°E, 24.V.1994, leg. J. Halada.
- V i e t n a m** : 1 ♀, 70 km NW Hanoi, Tam Dao, 900-1200m, 21.27°N 105.39°E, 4.-19.V.1996, leg. Pacholátko & Dembický; 1 ♀, Hanoi, X.-XI.1984, leg. Soldán; 1 ♀, Dono Nai province, Nam Cattien Hes., 6.-18.XI.1989, leg. Soldán.

### ***Sceliphron pietschmanni* KOHL, 1918 (1 ♂)**

- S y r i a** : 1 ♂, Dsir, 230m, 35°41'N 37°19'E, 17.-18.VI.1998, leg. Hradsky.

### ***Sceliphron quartinae* (GRIBODO, 1884) (61 ♀ ♀, 46 ♂ ♂)**

- B e n i n** : 1 ♀, Zangnanado river Quene, 15.IV.2000, leg. J. Halada, det. Ohl 2012; 1 ♀, Village Akongbere near Save, 24.IV.2000, leg. Kudrna; 1 ♂, Save env., 16.VI.2001, leg. Kantner.
- C e n t r a l A f r i c a n R e p u b l i c** : 1 ♀, 40 km S Nola, 600m, 03°23'N 16°10'E, 13.XII.2008, leg. J. Halada; 1 ♀, 45 km SSW Bamingui, 07°15'N 20°03'E, 14.V.2009, leg. J. Halada; 1 ♀, 90 km S Bozoum, 780m, 05°39'N 16°37'E, 30.V.2009, leg. J. Halada; 1 ♀, 90 km S Bangui, 380m, 05°03'N 18°47'E, 9.V.2009, leg. J. Halada; 1 ♀, 80 km W Boda, 490m, 04°29'N 16°47'E, 21.XII.2008, leg. J. Halada; 1 ♂, 85 km NW Bangui, 380m, 04°46'N 18°04'E, 4.IV.2010, leg. J. Halada.
- E t h i o p i a** : 1 ♂, 10 km NW Shen Husen, 07°46'N 40°36'E, 870m, 1.VI.2015, leg. J. Halada; 1 ♂, Sof Ulmer, 06°54'N 40°51'E, 1200m, 30.-31.V.2015, leg. J. Halada; 2 ♂ ♂, Wellage province, 60 km E Nekemte, 4.+5.IV.2007, leg. J. Halada.
- K e n y a** : 1 ♀, Taita, Mwatate, 9.XII.1999, leg. Snižek; 1 ♀, 2 ♂ ♂, Voi (Tsavo), 23.III.-4.IV.1997, leg. Ma. Halada; 2 ♂ ♂, Voi (Tsavo) env., 22.XI.-2.XII.1996, leg. M. Halada; 3 ♂ ♂, Voi env. (Tsavo), 8.-18.XI.1996, leg. M. Halada; 6 ♂ ♂, Voi, 10.XII.1999, leg. Snižek.
- M a l a w i** : 1 ♀, Mulanje Mts. env., 23.-26.XII.2001, leg. Jiří Halada; 1 ♀, 85 km SE Lilongwe Dedza, 5.-12.I.2002, leg. J. Halada; 5 ♀ ♀, 1 ♂, Nkhotakota, lake Malawi, 2.I.2002, leg. J. Halada; 2 ♂ ♂, 85 km SE Lilongwe Dedza, 17.-19.XII.2001, leg. J. Halada; 1 ♂, 50 km SW Blantyre Chikwawa, 22.XII.2001, leg. J. Halada; 1 ♂, Mulanje, 25.XII.2001, leg. Kantner.
- M a l i** : 1 ♂, Kati, 25 km N Bamako, 23.VIII.1991, leg. Max Schwarz.
- M o z a m b i q u e** : 1 ♀, Manika province, 45 km NW Chimoio, 12.-20.XII.2003, leg. J. Halada; 1 ♀, Manika province, 65 km W Chimoio, 10.-11.XII.2003, leg. J. Halada; 2 ♂ ♂, 35 km SW Chimoio, 19°08'S 33°09'E, 700m, 14.XII.2005, leg. J. Halada.

**S o u t h A f r i c a** : 2 ♀ ♀, Limpopo province, 35 km W Hoedspruit, 24°23'S 30°40'E, 470m, 19.XII.2009, leg. J. Halada; 1 ♀, Maputoland, SE Ndumo, 24.I.2003, leg. Snižek; 1 ♀, Maputoland, 20 km S Emanguzi Mobela, 2.XII.2002, leg. Snižek; 1 ♀, Mpumalanga, 30 km NE Lydenbrug NR, Ohrig, 22.-25.XI.2003, leg. J. Halada; 1 ♀, West Cape, Klein Karoo SE Grot river, 25.X. 1999, leg. M. Halada; 1 ♀, West Cape, Klein Karoo, Grot river, Langberg, 24.XI.2002, leg. Ma. Halada; 1 ♂, Mpumalanga province, Pilgrims Rest, 12.XI.2006, leg. Snäll.

**T a n z a n i a** : 1 ♀, 1 ♂, Mombo or., 9.-11.I.1996, leg. Snižek.

**Z a m b i a** : 13 ♀ ♀, 6 ♂ ♂, Mkushi env. E, 16.-18.XII.2004, leg. Snižek; 5 ♀ ♀, 2 ♂ ♂, Solwezi env., 1.-3.XII.2002, leg. J. Halada; 3 ♀ ♀, 1 ♂, 62 km SW Serenje, 22.XI.2005, leg. Snižek; 1 ♀, 150 km S Mwinilunga, 13°11'S 24°14'E, 1100m, 18.X.2008, leg. M. Halada; 1 ♀, 150 km S Mwinilunga, 13°11'S 24°14'E, 1100m, 2.XI.2008, leg. M. Halada; 2 ♀ ♀, Copperbelt province, 25 km W Chingola, 1600m, 16.I.2006, leg. Kmeko; 1 ♀, 70 km S Mpika, 12°18'S 31°07'E, 1500m, 25.VI.2005, leg. M. Halada; 1 ♂, 50 km W Kasama, 26.XUI.2004, leg. Snižek; 1 ♂, W Solwezi, 1°2°10'S 25°33'E, 1300m, 30.X.2008, leg. M. Halada.

**Z i m b a b w e** : 1 ♀, 30 km W Harare, 29.XI.1998, leg. Bečvář, det. Ohl; 1 ♀, Masvingo env., 22.I.1998, leg. Ma. Halada; 1 ♀, 2 ♂ ♂, 30 km W Harare, 22.XII.1998, leg. J. Halada; 2 ♂ ♂, Mavhuradonha Saf. A., 15 km SE Muzarabani, 17.XII.1998, leg. M. Halada; 1 ♂, 25 km NE Samva Nyagui r. (Bindura), 15.XII.1998, leg. J. Halada.

### ***Sceliphron rectum* (KOHLE, 1918) (2 ♀ ♀)**

Variation: Black, the following parts yellow: scape, band on pronotum, scutellum, metanotum, tegula, large subtegular spot, propodeum with large terminal mark. Legs black, except apical half of fore- and midfemur, fore- and midtibia and tarsus and hindtibia basal third and tarsi. Petiole black and more or less yellow spot on tergum I.

**C r o a t i a** : 1 ♀, N Dalmatia, Biograd na Moru (SE env.), 43°55.5'N 15°28'E, ~30m, 8.-13.VII.2013, leg. M. Řiha.

**I t a l y** : 1 ♀, Emilia Romagna, Spina (E env.), 7 km S Comacchio, 0-5m, 25.-31.VII.2001, leg. M. Řiha.

### ***Sceliphron rufopictum* (F. SMITH, 1856) (1 ♀)**

**I n d o n e s i a** : 1 ♀, Lesser Sundas, Lamaiera v. Lomblen isl., 9.XI.2008, leg. Jekl.

### ***Sceliphron spirifex* (LINNAEUS, 1758) (279 ♀ ♀, 184 ♂ ♂)**

**A l b a n i a** : 1 ♀, Elbasan, IX.1918, Buèsner.

**A u s t r a l i a** : 1 ♂, Vic. Red Hill, 9.II.1970, leg. Holmes, coll. Kocourek.

**B e n i n** : 13 ♀ ♀, 15 km SE Save, 8.-25.IV.2000, leg. J. Halada.

**B o t s w a n a** : 1 ♀, Nata env., 9.-14.I.1997, leg. Snižek.

**B u l g a r i a** : 1 ♀, Sozopol, 8.-22.1986, leg. Poláček; 1 ♀, Sozopol, VII.1978, leg. Čech.

**C a m e r o o n** : 6 ♀ ♀, North-West province, E env. of Big Babanki, 1200m, 06°06.698'N 10°15.938'E, 5.-13.III.2008, leg. Řiha; 1 ♀, North-West province, E of Big Babanki, 06°07'N 10°16'E, 1200m, 10.III.2008, leg. Horák; 1 ♀, Kribi, III.1973, leg. Mühle.

**C e n t r a l A f r i c a n R e p u b l i c** : 2 ♀ ♀, ~40 km E Bambio, 03°59'N 17°11'E, 490m, 9.XI.2012, leg. J. Halada; 1 ♀, 45 km E Nola, 570m, 03°40'N 16°26'E (GPS), 17.XII.2008, leg. J. Halada; 1 ♀, 50 km W Mbaiki, 500m, 04°10'N 17°42'E, 6.XII.2008, leg. J. Halada; 1 ♀, 15 km E Carnot, 04°58'N 15°59'E, 5.VI.2009, leg. J. Halada; 1 ♀, 30 km N Nola fam, 11.+14.XI.2012, leg. J. Halada; 1 ♂, 75 km E Sibut, 510m, 05°50'N 19°38'E, 22.V.2009, leg. J. Halada.

**C r o a t i a** : 14 ♀ ♀, Dalmatia, Seline, VII.1969, leg. Görtler; 1 ♀, Makaraska riv., Drvenik, 16.VI.2000, leg. Kafka; 2 ♀ ♀, Split, 21.VII.1962, leg. Aspöck; 2 ♀ ♀, Insel Krk, leg. Mader; 1 ♀, Dalmatia, Adria Küste, Strand bei Biograd, 7.VIII.1979, leg. Reichl; 1 ♀, Krk, Malinska,

16.VIII.1931, leg. Plásek; 2 ♀ ♀, Rieka, VIII.1968, leg. Niedl; 1 ♀, Rieka, VII.1986, leg. ?; 1 ♀, Krk, U. Baska, 15.IX.2001, leg. Drack; 3 ♂ ♂, Dalmatia sept., Biograd, 1.VII.1966, leg. Hoffer; 3 ♂ ♂, Dalmatia, Podgora, 14.VII.1937, leg. Plásek; 1 ♂, Istria, 10 km N Pula, 25.-27.VIII.1998, leg. J. Halada; 1 ♂, Villas Rubin, 0m, ca. 4 km E Rovinj, 45°27'N 13°43'E, leg. J. Gusenleitner; 1 ♂, Istria, Insel Veglia, leg. Mader; 9 ♀ ♀, 2 ♂ ♂, Krk, 1967, ex coll. Max Schwarz; 1 ♀, Krk, 15.VI.1989, leg. Kollmair; 1 ♀, Split, 7.VI.1962, leg. Kusdas; 1 ♀, Istria, leg. ?; 1 ♀, 1 ♂, Split, 22.VII.1964, leg. Aspöck.

C y p r u s : 1 ♀, Famagusta, 18.III.1997, leg. Boness.

D e m o c r a t i c R e p u b l i c C o n g o : 1 ♀, Rwindi, 31.III.1977, leg. Nimmervoll.

E g y p t : 1 ♀, Kahira, 25.VII.1971, leg. Zouhar; 1 ♀, Gize, 12.V.1969, leg. Zouhar; 1 ♀, 1 ♂, Kahira, 18.+20.VIII.1972, leg. Zouhar; 1 ♀, Meadi, 18.V.1936, leg. Priesner; 1 ♀, Alexandria, VII.1968, leg. Deneš; 1 ♀, Kahira-Gezira, 10.VIII.1974, leg. Zouhar; 6 ♂ ♂, Luxor, 12.VI.1971, leg. Zouhar; 1 ♀, Fayed, leg. Priesner.

E t h i o p i a : 1 ♀, Kaffa province, 40 km W Bonga, 1850m, 9.IV.2007, leg. J. Halada; 1 ♀, Sidamon province, 40 km W Sodo, 1130m, 12.IV.2007, leg. J. Halada; 1 ♀, Shoa province, Lake Langano, 1600m, XII.1090, leg. Werner; 1 ♀, Ilubabor province, 15 km SW Bedele, 5.IV.2007, leg. J. Halada; 1 ♀, 70 km Jima (N.P.), 07°02'N 36°40'E, 1230m, leg. J. Halada; 1 ♀, Nera Dorze, 06°10.84'N 37°34.79'E, 2400m, V.2013, leg. Ströhle; 4 ♂ ♂, Wellega province, 60 km E Nekemte, 4.IV.2007, leg. J. Halada; 1 ♂, Lake Shoa, V.1989, leg. Werner.

F r a n c e : 1 ♀, Les Baux, 1.VI.1952, leg. Wolf; 3 ♂ ♂, Corse, Algaiola Dün., 1.-11.VII.1979, leg. Wolf; 2 ♀ ♀, Feyence ballia, 28.VII.1963, leg. Diller; 3 ♀ ♀, 1 ♂, Bordeaux, 24.VIII.1943, ex coll. Max Schwarz; 1 ♀, Fyaence/Esterel, 350m, 28.VII.1963, leg. Diller; 1 ♀, Camarque, Le Sambuc, 31.VII.1963, leg. Diller.

G h a n a : 1 ♀, leg. ?.

G r e e c e : 5 ♀ ♀, 1 ♂, Chalkidike, Kasandra env., 5.-9.IX.1997, leg. J. Halada; 1 ♀, Preveza St. Thomas, 12.-14.VII.1997, leg. Černý; 1 ♀, Rhodos, Archangelos, 2.-14.VI.1996, leg. Hradský; 1 ♀, Parga env., 4.-14.VI.1996, leg. Kadlec; 1 ♀, Kreta, Skines bei Chania, 20.VIII.1989, leg. Puchberger; 1 ♀, Kreta, Kavros, Georgiopolis, 19.VI.-2.VII.2001, leg. Hradský; 1 ♀, Insel Samos, Limnionas Bay, 10.VIII.2003, leg. ?; 1 ♀, 2 ♂ ♂, Alt Korinth, 24.VII.1965, leg. Aigner; 1 ♀, Mittel-Kreta, Limin Hersonisson, 13.-16.VI.1993, leg. Tiefenthaler; 1 ♀, Pelopones, 20 km E Sparta, Ag. Anagiri, 5.VII.1996, leg. Ma. Halada; 1 ♀, Pelopones, 40 km N Tripolis Scotini, 3.VII.1996, leg. Ma. Halada; 1 ♀, Rhodos, Kremasti, 10.IX.2003, leg. Kafka; 1 ♀, Jonanina, 29.IV.1944, leg. Bayer; 12 ♂ ♂, Korinthos province, ~50 km W Mégara, 6.-7.VIII.2010, leg. J. Halada; 1 ♀, Rhodos, 25.VII.1990, ex coll. Max Schwarz; 1 ♀, Luotraki, 25.VII.1971, leg. Max Schwarz.

G u i n e a : 1 ♀, N' Zerkaoc, 1965, leg. Cisen; 1 ♀, Hadina Salambandi, 11°55.65'N 11°53.85'W, 11.VII.2004, leg. Ma. Halada. 1 ♂, Conakry, 1961, leg. ?.

I s r a e l : 1 ♀, Tiv'on, 1.VIII.2009, leg. Dorchin; 1 ♀, Halbsor reservir, 10V.2009, leg. Dorchin.

I t a l y : 2 ♀ ♀, 1 ♂, Emilia Romagna, Spina (E env.), 7 km S Comacchio, 25.+31.VII.2001, leg. Řiha; 2 ♀ ♀, 3 ♂ ♂, Sardegna, Cagliari, 8.VII.1959, leg. Wolf; 1 ♀, 1 ♂, Sardegna E, Lanusei env., 29.VI.2000, leg. J. Halada; 1 ♀, 5 ♂ ♂, 7 km S Comacchio, Spina, VII.2001, leg. Řiha; 1 ♀, Stresa, 29.VIII.1951, leg. Wolf; 1 ♀, Petrognano bei Lucca (Toscana), 29.VII.1986, leg. Altzinger; 1 ♀, Sardegna, Isola Rosa, Badesi, 5.VII.2012, leg. Martin Wolf; 1 ♀, 4 ♂ ♂, Capri, 30.VI.1972, leg. Pádr; 1 ♀, Lido de Sole, 15.IX.1994, leg. Štrosova; 1 ♀, Calabria, 15 km S Lokri, 1.-2.VIII.1999, leg. J. Halada; 1 ♀, Rapello, VIII.1966, leg. Heinrich; 1 ♂, Sardegna NE, Obia env., 4.VII.2000, leg. J. Halada; 1 ♂, Sicilia, 40 km N Gela, 450m, 20.VI.2012, leg. J. Halada; 3 ♂ ♂, Calabria, Palmi, 3.VIII.1999, leg. J. Halada; 1 ♂, Liguria, Capo di Noli, 23.VIII.1957, leg. Klimesch; 1 ♂, Puglia, Taranto env., 25.VIII.1997, leg. J. Halada; 1 ♀, Pedara, 18.VI.1949, leg. Hamann; 1 ♂, Catania, Plona, 27.VI.1949, leg. Hamann; 1 ♀, Emilia Romagna, Spina (E env.), 7 km S Comacchio, 0-5m, 25.-31.VII.2001, leg. Řiha.

Y e m e n : 1 ♀, 1 ♂, 20 km NW Dhawran, 14°40'N 44°13'E, 1800m, 29.X.2005, leg. J. Halada; 1 ♀, Wadi Dawan NW Mukalla, 950m, 15°09'N 48°26'E, 20.X.2005, leg. J. Halada.

J o r d a n : 2 ♂ ♂, 30 Km N Tafila, 2.V.1996, leg. Ma. Halada; 1 ♂, Wadi Araba, 100 km N Agaba, 14.IV.1996, leg. Mi. Halada; 1 ♂, Safi, 50 km N Karak, 15.IV.1996, leg. Mi. Halada.



- K e n y a :** 2 ♀ ♀, 11 ♂ ♂, Voi env., (Tsavo), 8.-18.XI.1996, leg. Mi. Halada; 6 ♀ ♀, Taita Hills Wundanyi, 5.-10.IV.1997, leg. Ma. Halada; 2 ♀ ♀, Mwingi, Kangonde wadi, 18.IV.2007, leg. M. Halada; 1 ♀, Nairobi, 01°16.40'S 36°46.50'E, 1780m, 4.-10.I.2006, leg. M. Halada; 2 ♀ ♀, Taita Hills, Voi river, 14.IV.2007, leg. M. Halada; 1 ♀, Marsabit, 02°20'N 37°59'E, 23.VII.1993, leg. Leonhardsberger; 1 ♀, 4 ♂ ♂, Mombasa, 04°04'S 39°40'E, 20.-26.VII.1992, leg. Leonhardsberger; 1 ♀, Lake Baringo, 07°50'N 36°05'E, 1000m, 31.VII.-1.VIII.1993, leg. Leonhardsberger; 1 ♂, Maralal, 1°05'N 36°42'E, 4.VIII.1992, leg. Leonhardsberger; 8 ♂ ♂, Voi (Tsavo), 23.III.-4.IV.1997, leg. Ma. Halada; 2 ♂ ♂, Voi (Tsavo) env., 22.XI.-2.XII.1996, leg. Mi. Halada; 1 ♂, Voi (Tsavo), 13.-17.XII.1997, leg. Snižek; 1 ♂, Taita Hills, Wundanyi, 18.-22.III.1997, leg. Ma. Halada; 1 ♂, Mwingi env., 7.IV.2007, leg. M. Halada; 1 ♂, W Mwingi, 6.IV.2007, leg. M. Halada; 1 ♀, Mombasa, 19.VIII.1975, leg. Nimmervoll.
- L i b y a :** 1 ♀, 1 ♂, Misurata, 200 km E Tripolis, 31.VIII.1986, leg. Fragner.
- M a c e d o n i a :** 1 ♀, Drenovo-Kavadar, 25.VII.1961, leg. Turner.
- M a l a w i :** 1 ♀, Chinteche, 1.-5.IV.2000, leg. Pavel; 2 ♀ ♀, 2 ♂ ♂, Nkhotakota, lake Malawi, 2.I.2002, leg. J. Halada.
- M a l i :** 1 ♀, 10 km S Mopti, 20.VIII.1981, leg. Max Schwarz.
- M o r o c c o :** 1 ♀, 1 ♂, 5 km N Agadir, 18.V.1997, leg. J. Halada; 1 ♀, Tiznit Oued Massa, 8.V.2003, leg. Snižek; 1 ♂, 50 km W Meknes, 19.V.1997, leg. J. Halada; 1 ♂, Tanri, 70 km N Agadir, 8.V.1995, leg. Ma. Halada.
- M o z a m b i q u e :** 2 ♀ ♀, 40 km SW Chimoio, 19°23'S 33°11'E, 650m, 16.XII.2005, leg. Kadlekova; 1 ♀, 6 ♂ ♂, 35 km SW Chimoio, 19°08'S 33°09'E, 700m, 14.XII.2005, leg. J. Halada; 1 ♀, Manicala province, 30 km NW Catandica, 17.-18.XII.2003, leg. J. Halada; 1 ♂, Sofala province, 110 km NW Save, 7.XII.2003, leg. J. Halada.
- N a m i b i a :** 1 ♀, Tsuneb centr. 9.I.1995, leg. Snižek; 1 ♀, 1 ♂, 15 km E Swakopmund, 4.II.1993, leg. J. Gusenleitner; 2 ♀ ♀, 1 ♂, Rundu, 17.+24.I.1993, leg. J. Gusenleitner; 3 ♂ ♂, Rundu, 19.I.1993, leg. J. Gusenleitner; 2 ♀ ♀, Rundu, 18.+20.I.1993, leg. Max Schwarz; 1 ♀, Rehoboth, 49 km S Rehoboth, 9.II.1990, leg. Max Schwarz; 3 ♂ ♂, 15 km E Swakopmund, 4.+12.II.1993, leg. Max Schwarz; 1 ♂, Rundu, Kavangogeb., 10.III.1990, leg. Max Schwarz.
- N i g e r i a :** 2 ♀ ♀, Gashaka Gumfi NP, 30 km SE Serti env., 7°21'N 11°32'E, ~450m, 24.IV.-13.V.2011, leg. J. Halada.
- O m a n :** 1 ♀, Dhofar province, Rakhyut, 5-20m, 16°45'N 53°24'E, 32.III.2015, leg. J. Halada; 1 ♀, Dhofar province, Jabal al Qamar, Al-Mugsayl Wadi, 25.VIII.2012, leg. Kučera; 5 ♂ ♂, Dhofar province, Sarfayt env., 16°69.0'N 53°13.4'E, 4.X.2013, leg. J. Halada; 1 ♂, Dhofar province, 10 km W Dhalqut, 16°70.5'N 53°19.6'E, 3.X.2013, leg. J. Halada.
- R u a n d a :** 1 ♀, Kigala, X.1961, leg.?
- S e n e g a l :** 13 ♀ ♀, 20 km W Koungheul, 20.VI.2004, leg. Ma. Halada & Kudrna; 2 ♀ ♀, 10 km E Medina Gounas, 13°08.05'N 13°42.03'W, 25.VI.2004, leg. Ma. Halada & Kudrna; 1 ♀, Nikolo Koba NP, 13°01.13'N 13°18.48'W, 11.VII.2004, leg. Ma. Halada; 1 ♀, 10 km SE Kedougou, 12°33.52'N 12°15.72'W, 22.VI.2004, leg. Ma. Halada.
- S o u t h A f r i c a :** 2 ♀ ♀, North West, 20 km W Bothaville Klerksdorp Vaal Riv, 31.I.2001, leg. Snižek; 4 ♀ ♀, Kapprovince Kalahari Gemsbock Nat. Park, 26°28'S 20°39'E, 750m, 13.II.1988, leg. Rausch; 1 ♀, Kwaz. Natal province, 35 km N Port Edward, 30°46'S 30°09'E, 450m, 28.XII.2009, leg. J. Halada; 2 ♀ ♀, Mpumalanga, 30 km NE Lydenbrug N.R., Ohrig, 9.-12.I.2004, leg. J. Halada; 3 ♀ ♀, 2 ♂ ♂, Mpumalanga, Waterval-Boven, Elans riv., 18.I.2000, leg. J. Halada; 1 ♀, 2 ♂ ♂, Pretoria city, 12.II.2000 leg. J. Halada; 1 ♀, North West, W Bothaville, Vaal river, 27°24'S 26°24'E, 1250m, 23.XII.2007, leg. M. Halada; 1 ♀, Rustenburg, 5.I.2007, leg. Šafanga; 1 ♀, Prov. Gauteng, E Magagnila Heights, I.S.Coll., 26°25'22"S 28°12'37"E, 1700m MSL, 01.II.-20.III.2014, leg. Danner; 7 ♂ ♂, West Cape, Klein-Karoo, Grot river, Langberg, 24.IX.2002, leg. Ma. Halada; 1 ♂, West Cape, Klein-Karoo, Grot river, Langberg, 15.XII.2002, leg. Ma. Halada; 2 ♂ ♂, Limpopo, 10 km E Stockpoort at Limpopo river, 16.-19.XII.2006, leg. Bednařík; 1 ♂, Maputoland, SW Emanguzi, 29.I.2003, leg. Snižek; 1 ♂, East Cape, Graff-Reinet-Nieu-Bethesda, 28.I.2001, leg. Snižek; 1 ♂, North West, 50 km S Kimberley Ritchie, 22.I.2000, leg. J. Halada.
- S p a i n :** 2 ♀ ♀, Gran Canaria, Marbatomas, 9.-11.VI.1995, leg. Hradsky; 4 ♀ ♀, Mallorca, E Cala Torta, 18.VII.2000, leg. Perraudin; 1 ♀, Valencia, VII.1941, leg. ?; 1 ♀, Madrid env., leg. ?; 1 ♀,

- Mallorca, Palma, 1.VII.1990, leg. Heiss; 1 ♀, Mallorca, Ins Balear. Paguera, 1.X.1970, leg. Klunet; 1 ♀, Guadalik (Madrid), VIII.1989, leg.?
- S y r i a : 1 ♀, Kafir, Suwayda, 21.VI.2000, leg. M. Halada; 1 ♀, Croc de Chevallier/Tartuns, 617m, 34°45'N 36°10'E 20.VI.1990, leg. Hransky.
- T a n z a n i a : 5 ♀ ♀, 160 km S Dar Es Salam, 07°51.8'S 38°58.6'E, 40m, 22.XII.2005, leg. Halada & Snižek; 3 ♀ ♀, Pwani province, 15 km W Kibiti, 07°47'S 38°49'E, 100m, 15.I.2007, leg. J. Halada & Kadlecova; 1 ♀, Pwani province, E Utete, 08°03'S 38°53'E, 75m, leg. J. Halada; 1 ♂, Mombo or., 9.-11.I.1996, leg. Snižek; 1 ♂, Utete, Rufiji river, 08°02.8'S 38°52.4'E, 30m, 23.XII.2005, leg. Halada & Snižek.
- T u n i s i a : 1 ♀, 3 ♂ ♂, Sousse, 1.-9.VIII.1981, leg. Wolf; 1 ♀, Tunis, 2.-25.VIII.1972, leg. Belin; 1 ♀, Touzeur, 13.-16.VII.1979, leg. J. Schmidt.
- T u r k e y : 8 ♀ ♀, vil Icel (Mersin) Büyükeceli (Ovacik) env., 50-100m, 14.-18.VII.1998, leg. Bezděk & Riha; 2 ♀ ♀, 1 ♂, Silifke env., 4.VII.1993, leg. Mi. Halada; 1 ♀, 2 ♂ ♂, Akyaka, 37°03'N 28°20'E, 3m, pasfure+saltymeadow, IX.2012, leg. Barták; 1 ♀, Antalya, Bey Daglari, Kemer env., 0-400m, 3.VII.2003, leg. Burlisch; 1 ♀, coast side, 70 km E Antalya, 29.VII.-7.VIII.2001, leg. Tyrmer; 2 ♀ ♀, 5 ♂ ♂, Manisia, 15 km SEE Salihli, 38°26'N 28°19'E, 190m, 2.VII.2006, leg. J. Halada; 1 ♀, Adiyaman province, Nemrut Dagi Mts., Karadut env., 14.-19.VII.2000, leg. Obořil; 1 ♀, 30 km N Erdemli Aslanli, 17.VI.1998, leg. Ma. Halada; 1 ♀, Antalya, Beldibi, 25m, 21.V.-2.VI.1993, leg. Hradky; 2 ♂ ♂, Manisia, 40 km NW Salihli, 38°40'N 27°45'E, 150m, 26.VI.2006, leg. M. Halada; 1 ♀, Köycegiz, 20.VI.1964, leg. F. Ressler; 1 ♂, Antakya, 7.VI.1965, leg. Max Schwarz.
- U g a n d a : 1 ♀, Kasese Kilembe, E Ruwenzori, 23.IX.2001, leg. Snižek.
- Z a m b i a : 5 ♀ ♀, 150 km S Mwinilunga, 13°11'S 24°14'E, 1100m, 2.XI.2008, leg. M. Halada; 1 ♀, NW Kasempa, 13°06'S 25°14'E, 1200m, 5.XI.2008, leg. M. Halada; 1 ♀, 1 ♂, 100 km W Solwezi, 12°13'S 25°39'E, 1400m, 10.XI.2005, leg. M. Halada; 1 ♀, 20 km SE Mwinilunga, 8.I.2003, leg. J. Halada.
- Z i m b a b w e : 9 ♀ ♀, 5 ♂ ♂, 40 km S Chipinga, Mt. Selinda, 13.XII.1998, leg. M. Halada; 4 ♀ ♀, 1 ♂, Mavhuradonha Saf. A., 15 km SE Muzarabani, 17.XII.1998, leg. M. Halada; 1 ♀, Chirinda Forest, Mt. Selinda, 3.II.1998, leg. Ma. Halada; 1 ♀, 200 km SW Bulawayo Lupane, 29.I.1998, leg. Ma. Halada; 1 ♀, (ZW) Dete (Hwange NP), 11.VII.1997, leg. Plass; 1 ♀, 90 km NW Bulawayo, Route A8, 18.XI.2014, leg. Snižek; 1 ♂, Matobo, Bulawayo, 30.I.1998, leg. Ma. Halada; 1 ♂, 80 km E Masvingo Nyika, 12.XII.1998, leg. Ma. Halada; 1 ♂, 50 km S Bulawayo, Matobo, 3.-5.XII.1998, leg. J. Halada; 1 ♂, Nushandike N.P., Masvingo, 10.XII.1998, leg. J. Halada; 1 ♂, 30 km W Harare, 29.XI.1998, leg. Ma. Halada.

## Subfamily S p h e c i n a e LATREILLE, 1802

### Genus *Stangeella* MENKE, 1962 (12 ♀ ♀, 22 ♂ ♂)

#### *Stangeella cyaniventris* (GUÉRIN-MENEVILLE, 1831) (12 ♀ ♀, 22 ♂ ♂)

- A r g e n t i n i a : 3 ♀ ♀, 3 ♂ ♂, ruta 40, 10 km N Belen, 1300m, 27°35'S 67°00'W, 8.II.2010, leg. M. Halada; 3 ♀ ♀, 1 ♂, Andes, 2100m, S Santa Maria, Ruta 40, 22.I.2010, leg. Snižek; 1 ♀, Andes, 2100m, NE Hualfin, ruta 40, (W Tucuman), 24.I.2010, leg. Snižek; 1 ♀, Belen, 2000m, S San Fernando, 13.I.2010, leg. Snižek; 1 ♀, 8 ♂ ♂, Salta province, 50 km Cachi, 24°50'W, 2700m, 26.I.2009, leg. Ma. Halada; 1 ♀, NW Cachi, 2700m, ruta 40, 16.I.2012, leg. Snižek; 2 ♂ ♂, ruta 40, 25 km NE Hualfin, 2200m, 27°07'S 66°39'W, 9.II.2010, leg. M. Halada; 1 ♂, ruta 40, 25 km NE Hualfin, 2200m, 27°07'S 66°39'W, 21.II.2010, leg. M. Halada; 1 ♂, W Catamarca, N Chumbicha, ruta 60, 28°48'S 66°23'W, 1000m, 7.II.2010, leg. M. Halada; 1 ♂, N Santa Maria, ruta 40, 2000m, (W Tucuman), 13.I.2012, leg. Snižek; 1 ♂, N Santa Maria, ruta 40, 2000m, (W Tucuman), 10.II.2012, leg. Snižek; 1 ♀, 1 ♂, Prov. La Rioja, IX.1961, leg. Walz, det. Ascher 2007; 1 ♂, Catamarca, Tinogasta, II.1963, leg. Walz, det. Ascher 2007.
- C h i l e : 1 ♂, Santiago La Canas, 1985, leg. Pena, det. Ascher 2007; 1 ♂, S Canguenes, 5.XII.2003, leg. Snižek; 1 ♂, reg. V, Cabildo, La Vina env., 14.XI.2003, leg. Snižek, det. Ascher 2007; 1 ♀, reg. V, El Sauce, N Los Andes, X.1992, leg. Stary, det. Ascher 2007.

## Acknowledgements

I am obliged to Mag. F. Gusenleitner, curator of the "Biologiezentrum Linz" collection, who made it possible for me to study the material. I am also indebted to Mag. Dominique Zimmermann, curator of the Hymenoptera-collection of the Museum of Natural History of Vienna, who allowed me to examine "Kohl's-collection".

## Zusammenfassung

Es wurden 3.672 Exemplare der Gattungen *Chalybion* (648 ♀♀, 908 ♂♂), *Chlorion* (40 ♀♀, 63 ♂♂), *Dynatus* (1 ♂), *Penepodium* (9 ♀♀, 16 ♂♂), *Podium* (7 ♀♀, 5 ♂♂), *Sceliphron* (1.115 ♀♀, 822 ♂♂), *Stangeella* (12 ♀♀, 22 ♂♂), and *Trigonopsis* (2 ♀♀, 2 ♂♂) untersucht. Alle Informationen über Fundorte, Fangdaten, sowie Namen der Sammler sind aufgelistet. Die neue Art *Chalybion ohli* von Madagascar, die bisher unbekanntenen Männchen von *Chalybion dolicho thorax*, *Chalybion sommereni* und das Weibchen von *Chalybion mochi* werden beschrieben.

## Literature

- ARNOLD G. (1928): The Sphegidae of South Africa. Part X. — *Annals of the Transvaal Museum* **12**: 233-279, pls.
- BOHART R.M. & A.S. MENKE (1962): A reclassification of the Sphecinae with a revision of the Nearctic species of the tribes Sceliphronini and Sphecini. — *University of California Publications in Entomology* **30**: 91-182.
- BOHART R.M. & A.S. MENKE (1976): Sphecid wasps of the world. A generic revision. — *University of California Press, Berkeley, Los Angeles, London*. 1 color plate, IX + 695 pp.
- de BEAUMONT J. (1962): Notes sur les *Sphex* paléarctiques du sous-genre *Chlorion* LATR. (Hymenoptera, Sphecidae). — *Bolletino dell'Istituto di Entomologia della Università di Bologna* **26**: 29-41.
- DOLLFUSS H. (2001): The Sphecid Wasps of the Genus *Pemphredon* LATREILLE 1756, of "Biologiezentrum Linz" Collection in Linz, Austria (Hymenoptera, Sphecidae). — *Linzer biologische Beiträge* **33** (1): 269-273.
- DOLLFUSS H. (2004a): The Pemphredoninae Wasps of "Biologiezentrum Linz" Collection in Linz, Austria (Hymenoptera, Apoidea, Crabronidae). — *Linzer biologische Beiträge* **36** (1): 105-129.
- DOLLFUSS H. (2004b): The Crabroninae Wasps of "Biologiezentrum Linz" Collection in Linz, Austria (Hymenoptera, Apoidea, Crabronidae), Part 1. — *Linzer biologische Beiträge* **36** (2): 761-784.
- DOLLFUSS H. (2006): The Crabroninae Wasps of "Biologiezentrum Linz" Collection in Linz, Austria (Hymenoptera, Apoidea, Crabronidae), Part 2. — *Linzer biologische Beiträge* **38** (1): 505-532.
- DOLLFUSS H. (2008a): The Crabronid Wasps of the Genera *Oxybelus* LATREILLE 1796 and *Brimocelus* ARNOLD 1927 of "Biologiezentrum Linz" Collection in Linz, Austria (Hymenoptera, Apoidea, Crabronidae). — *Linzer biologische Beiträge* **40** (1): 463-505.
- DOLLFUSS H. (2008b): The Sphecini Wasps of the Genera *Chilosphex* BOHART & MENKE, *Isodontia* PATTON, *Palmodes* KOHL, *Prionyx* VANDER LINDEN and *Sphex* LINNAEUS of the "Biologiezentrum Linz" Collection in Linz, Austria (Hymenoptera, Apoidea, Sphecidae). — *Linzer biologische Beiträge* **40** (2): 1399-1434.

- DOLLFUSS H. (2010a): The Ammophilini Wasps of the Genera *Eremnophila* MENKE, *Eremochares* GRIBODO, *Hoplammophila* de BEAUMONT, *Parapsammophila* TASCHENBERG and *Podalonia* FERNALD of the "Biologiezentrum Linz" Collection in Linz, Austria (Hymenoptera, Apoidea, Sphecidae). — Linzer biologische Beiträge **42** (1): 535-560.
- DOLLFUSS H. (2010b): A Key to Wasps of the Genus *Podalonia* FERNALD 1927 (Hymenoptera: Apoidea: Sphecidae) of the Old World. — Linzer biologische Beiträge **42** (2): 1241-1291.
- DOLLFUSS H. (2013a): Revision of the wasp genus *Ammophila* KIRBY 1798 (Hymenoptera: Apoidea: Sphecidae) of the Palearctic Region and India. — Linzer biologische Beiträge **45** (1): 383-564.
- DOLLFUSS H. (2013b): The Ammophilini wasps of the "Biologiezentrum Linz"-Collection in Linz, Austria (part 2) including the Genera *Ammophila* KIRBY and *Podalonia* FERNALD (Hymenoptera, Apoidea, Sphecidae), and description of the hitherto unknown male of *Podalonia erythropus* (F. SMITH, 1856). — Linzer biologische Beiträge **45**: 565-591.
- DOLLFUSS H. (2015a): Revision of the wasp genus *Ammophila* KIRBY 1798 (Hymenoptera: Apoidea: Sphecidae) of the Sub-Saharan Region of Africa. — Linzer biologische Beiträge **47** (1): 307-412.
- DOLLFUSS H. (2015b): The Ammophilini Wasps of the "Biologiezentrum Linz"-Collection in Linz, Austria (part 3) including the genera *Ammophila* KIRBY, *Eremnophila* MENKE, *Eremochares* GRIBODO, *Hoplammophila* de BEAUMONT and *Podalonia* FERNALD (Hymenoptera: Apoidea: Sphecidae). — Linzer biologische Beiträge **47**(1): 413-439.
- FERNÁNDEZ C.F. & V. CASTRO-HUERTAS (2014): Wasps of the genus *Sceliphron* KLUG in Colombia (Hymenoptera, Sphecidae). — *Caldasia* **36**: 393-408.
- HENSEN R.V. (1987): Revision of the subgenus *Prosceliphron* van der VECHT (Hymenoptera, Sphecidae). — *Tijdschrift voor Entomologie* **129**: 217-261.
- HENSEN R.V. (1988): Revision of the nominate Subgenus *Chalybion* DAHLBOM (Hymenoptera, Sphecidae). — *Tijdschrift voor Entomologie* **131**: 13-64.
- KOHL F.F. (1890): Die Hymenopterengruppe der Sphecinen. I. Monographie der natürlichen Gattung *SpheX* LINNÉ (sens. lat.). — *Annalen des k. k. Naturhistorischen Hofmuseums* **5**: 77-194, pls VIII-XII, 317-462.
- KOHL F.F. (1902): Hymenopterengruppe der Sphecinen. II. Monographie der neotropischen Gattung *Podium* Fabr. — *Abhandlungen der k. k. Zoologisch-Botanischen Gesellschaft in Wien* **1**: 1-101, pls I-VII.
- KOHL F. F. (1918). Die Hautflüglergruppe "Sphecinae". IV. Die natürliche Gattung *Sceliphron* KLUG (= *Pelopaeus* LATR.). — *Annalen des k. k. Naturhistorischen Hofmuseums* **32**: 1-171.
- MENKE A.S. (1961): A review of the Nearctic species of *Chlorion* (Hymenoptera, Sphecidae) with the description of a new species from Baja California. — *Annals of the Entomological Society of America* **54**: 667-669.
- MENKE A. S. & A. WILLINK (1964): A survey of the Neotropical species of *Chlorion* (Hymenoptera, Sphecidae). — *Annals of the Entomological Society of America* **57**: 548-552.
- OHL M. (1996): The phylogenetic relationships within the Neotropical Podiinae with special reference to *Podium* FABRICIUS (Hymenoptera: Apoidea: "Sphecidae"). — *Deutsche Entomologische Zeitschrift* **43**: 189-218.
- SCHMID-EGGER Chr. (2005): *Sceliphron curvatum* (F. SMITH 1807) in Europa mit einem Bestimmungsschlüssel für die europäischen und mediterranen *Sceliphron*-Arten (Hymenoptera, Sphecidae). — *Bembix* **19**: 7-28.
- STANDFUSS K. & L. STANDFUSS (2006): Zum aktuellen Artenbestand der Pempredoninae, Bembicinae und Sphecinae (Hymenoptera, Crabronidae p.p. et Sphecidae) der planar - kollinen Vegetationsstufe in Südost Thessalien/Griechenland. — *Entomofauna* **27**: 301-316.

- VARDY C.R. (1978): A revision of the Neotropical wasps genus *Trigonopsis* PERTY (Hymenoptera: Sphecidae). — Bulletin of the British Museum (Natural History). Entomology **37**: 117-152.
- VAN DER VECHT J. & F. M.A. BREUGEL (1968): Revision of the nominate genus *Sceliphron* Latreille (Hymenoptera, Sphecidae) (Studies on the Sceliphronini, Part I). — Tijdschrift voor Entomologie **111**: 185-255.
- WILLINK A. (1951): Las especies argentinas y chilenas de "Chlorionini" (Hymenoptera, Sphecidae). — Acta Zoologica Lilloana **11**: 53-225.

Author's address:

Dr. phil. Mag. rer. nat. Hermann DOLLFUSS  
Dr. Gortgasse 4  
A-3240 Mank, Austria  
E-mail: hermann.dollfuss@aon.at