

Linzer biol. Beitr.	41/2	1253-1268	18.12.2009
---------------------	------	-----------	------------

A revision of Western Palaearctic *Medon*. VII. A new species from southern Turkey and additional records (Coleoptera: Staphylinidae: Paederinae)

V. ASSING

A b s t r a c t : *Medon solitarius* nov.sp. (Turkey: Kahramanmaraş) of the *M. fusculus* group, a close relative of *M. lamellatus* ASSING 2004 and *M. meybohmi* ASSING 2007, is described and illustrated. The genus *Medon* STEPHENS 1833 is now represented in the Western Palaearctic region by 58 species and subspecies; the identities of five additional names are doubtful. Additional records of 33 Western Palaearctic *Medon* species are reported, among them several new country records. The distributions of nine species are mapped.

K e y w o r d s : Coleoptera, Staphylinidae, Paederinae, *Medon*, Western Palaearctic region, Turkey, taxonomy, new species, new records.

Introduction

According to recent revisions and four supplements, the genus *Medon* STEPHENS 1833 is represented in the Western Palaearctic region by 56 species and subspecies, plus five nomina dubia (ASSING 2004a, 2005a, 2006, 2007a, 2007b, 2007c). An additional species was described from Afghanistan by FELDMANN (2007). A catalogue was provided by ASSING (2005a).

In the Western Palaearctic, the country with the highest diversity of *Medon* species is Turkey. So far, as many as 19 species have been recorded from Turkish territory.

Since the latest supplement, more material has been examined from various collections, including a new species from Turkey and several additional records of zoogeographic interest, among them several new country records.

Material, methods, and measurements

The material referred to in this study is deposited in the following public institutions and private collections:

HNHM Hungarian Natural History Museum, Budapest (Gy. Makranczy)

MHNG Muséum d'Histoire naturelle Genève (G. Cuccodoro)

MNHNP	Muséum national d'Histoire naturelle, Paris (A. Taghavian)
MNHUB	Museum für Naturkunde der Humboldt-Universität Berlin (J. Frisch)
NHMW	Naturhistorisches Museum Wien (H. Schillhammer)
SDEI	Senckenberg Deutsches Entomologisches Institut, Müncheberg (L. Zerche)
SMNS	Staatliches Museum für Naturkunde, Stuttgart
cAnl	private collection S. Anlaş, Turgutlu
cAss	author's private collection
cBoh	private collection J. Boháč, České Budějovice
cFel	private collection B. Feldmann, Münster
cGia	private collection P.M. Giachino, Torino
cOro	private collection P. Oromí, La Laguna
cPüt	private collection A. Pütz, Eisenhüttenstadt
cRou	private collection G. de Rougemont, Londinières
cSch	private collection M. Schülke, Berlin
cSha	private collection A. Shavrin, Irkutsk
cShm	private collection L. Schmidt, Hannover
cShm	private collection M. Tronquet, Molitg-les-Bains
cVai	private collection D. Vailati, Brescia

The morphological studies were carried out using a Stemi SV 11 microscope (Zeiss Germany) and a Jenalab compound microscope (Carl Zeiss Jena). For the photographs a digital camera (Nikon Coolpix 995) was used.

Head length was measured from the anterior margin of the clypeus to the posterior margin of the head, elytral length at the suture from the apex of the scutellum to the posterior margin of the elytra.

The maps were generated using the online generic mapping tool (GMT) of the Geomar website at www.aquarius.ifm-geomar.de/omc.

Species descriptions and additional records

Medon maronitus (SAULCY 1864)

Material examined: Turkey: 1 ex., Kahramanmaraş, Çınarınar Dağı, Çınarınar env., 37°39'N, 36°35'E, 575 m, 22.IV.2009, leg. Brachat & Meybohm (cAss); 1 ex., Hatay, Şenköy, 36°02'N, 36°07'E, 900 m, 13.IV.2009, leg. Brachat & Meybohm (cAss). Israel: 1 ex., Mt. Carmel, Little Switzerland, 28.V.1973, leg. Löbl (MHNG); 3 exs., Galilee, Safad, 500 m, 30.V.1973, leg. Löbl (MHNG). Iran: 1 ex., Golestan, 24 km SSW Fazelabad, Mohammadabad, 36°45'N, 54°49'E, 910 m, 7.VI.2006, leg. Frisch & Serri (MNHUB); 1 ex., Gilan province, Rudbar county, 7 km NW Bararu, 36°49'N, 49°38'E, 850 m, sifted, 8.VI.2008, leg. Pütz (cPüt); 1 ex., Gilan province, Fuman county, below Masuleh, 37°10'N, 49°02'E, 670 m, sifted, 8.VI.2008, leg. Pütz (cAss).

Comment: This species is widespread from the southern Balkans (Greece, Macedonia) to Middle Asia, Iran, and the Middle East; for a map illustrating its distribution see ASSING (2004a).

***Medon bucharicus* BERNHAUER 1902**

M a t e r i a l e x a m i n e d : Kyrgyzstan: 5 exs., Ferganskiy Alatau, Yarodar, 1400-1500 m, 16.-19.V.1993, leg. Schawaller (SMNS).

C o m m e n t : *Medon bucharicus* has been recorded from several localities in Middle Asia (Kyrgyzstan, Tajikistan, Uzbekistan) (ASSING 2004a, 2005a, 2006).

***Medon apicalis* (KRAATZ 1857)**

M a t e r i a l e x a m i n e d : Morocco: 2 exs., Ar Rif, Oued Laou env., 35°29'N, 05°07'W, 200 m, 7.-9.VI.2007, leg. Hlaváč (cAss). Spain: 1 ex., Castilla-La Mancha, Sierra de Segura, Rio Zumeta valley, 38°11'N, 2°27'W, 900 m, 16.III.2008, leg. Andújar (cAss); 1 ex., Valencia, Alicante, NW El Castell de Guadalest, Beniarda, 38°41'N, 00°13'W, 400 m, river bank, 9.VIII.2008, leg. Forcke (cAss). France: 6 exs., Landes, Retjons, IX.1998, leg. de Rougemont (cRou); 1 ex., Landes, Mont de Marson, VII.1999, leg. de Rougemont (cRou); 1 ex., Landes, Mont de Marson, at light source, VI.1999, leg. de Rougemont (cRou). Germany: 10 exs., Rheinland-Pfalz, Pirmasens, Eppenbrunn, car-net, 12.V.2008, leg. Renner (cAss, cFel); 1 ex., Sachsen-Anhalt, Thale am Harz, window, 20.V.1955, leg. Dorn (MNHUB); 1 ex., same data, but 20.VI.1953 (cAss). Hungary: 2 exs., Budapest, XII.ker., Petnehazy ret., car-net, 26.V.2002, leg. Merkl (HNHM); 2 exs., Bács-Kiskun county, Kunpeszér, car-net (evening), 22.IV.2006, leg. Merkl (HNHM, cAss); 1 ex., Pest county, Örkény, car-net, 23.IV.2000, leg. Merkl (HNHM).

C o m m e n t : *Medon apicalis* is an expansive Atlanto-Mediterranean element. Its distribution is mapped by ASSING (2006).

***Medon perniger* COIFFAIT 1978**

A d d i t i o n a l t y p e m a t e r i a l e x a m i n e d : *M. p. fraudulentus*: Holotype ♂: Sicilien, Messina, April 43 / leg. Wolfrum / Type / *Medon perniger* fraudulentum H. Coiffait 1978 / Sammlung Dr. Ulbrich (SMNS). Paratypes: 1 ex.: same data as holotype (SMNS); 2 exs.: Sicilien-Messina, 28.II.42 (SMNS); 2 exs., same data, but 13.12.42 (SMNS); 2 exs.: same data, but 6.3.43 (SMNS).

M a t e r i a l e x a m i n e d : Italy: 1 ex., Toscana, Piombino (NHMW); 1 ex., Calabria, Passo Scalone, 744 m, 31.V.1951, leg. Busulini (cAss).

C o m m e n t : The Adriato-Mediterranean distribution of *M. perniger* ranges from Sicily in the south to southeastern France and southern Switzerland in the north (ASSING 2006). Previously, only a paratype of *M. perniger fraudulentus* COIFFAIT 1978, a junior synonym of *M. perniger*, was examined (ASSING 2006).

***Medon oromii* ASSING 2006**

M a t e r i a l e x a m i n e d : Canary Islands: 1 ♀., La Palma, E Puerto de Tazacorte, Bco. de las Angustias, 28°39'N, 17°56'W, 30 m, near small stream, 14.X.2007, leg. Forcke (cAss).

C o m m e n t : The above specimen represents the first record of *M. oromii* since the original description, which is based on a single male from Gran Canaria (ASSING 2006).

***Medon petrochilosi* COIFFAIT 1970**

M a t e r i a l e x a m i n e d : Macedonia: 1 ex., Gorno Nerezi ["Nerezi"], 21.IX.1958, leg. Zora (cBoh). Greece: 2 exs., Grevená, Smixi, Vasilitsa, 1480 m, 15.VI.2006/16.VI.2007, leg. Giachino & Vailati (cVai, cAss); 2 exs., Kózani, Oros Titaros, road Skoteini-Velventós, 1515 m, 14.VI.2006-15.VI.2007, leg. Giachino & Vailati (cVai, cAss); 2 exs., Evritania, Oros Kokinias, above Livadáki, 1495 m, 9.VI.2006-12.VI.2007, leg. Giachino & Vailati (cVai, cAss).

C o m m e n t : *Medon petrochilosi* is a rare species previously known only from Greece and Croatia (ASSING 2004a). The above specimen from Macedonia represents a new country record. The material from Greece was collected with subterranean pitfall traps.

***Medon seleucus* BORDONI 1975**

M a t e r i a l e x a m i n e d : Turkey: H a t a y : 17 exs., Hatay, Kızıldağ, Teknepinar, 36°11'N, 35°59'E, 400 m, 14.IV.2009, leg. Brachat & Meybohm (cAss, cFel); 3 exs., Kızıldağ, W Teknepinar, Çamlıyayla, 36°13'N, 35°57'E, 360 m, 14.IV.2009, leg. Brachat & Meybohm (cAss); 18 exs., Nur Dağları, E Yakacık, 36°42'N, 36°15'E, 520 m, 15.IV.2009, leg. Brachat & Meybohm (cAss); 8 exs., Nur Dağları, E Dörtüol, 36°51'N, 36°17'E, 300 m, 20.IV.2009, leg. Brachat & Meybohm (cAss).

C o m m e n t : The distribution of *M. seleucus* is confined to Osmaniye and Hatay provinces, central southern Anatolia, where this species is common (ASSING 2004a, 2004b, 2007c).

***Medon dilutus dilutus* (ERICHSON 1839)**

M a t e r i a l e x a m i n e d : Germany: 1 ♂, Sachsen-Anhalt, Halle, 1854 (MNHUB). Hungary: 1 ♀, Lake Balatonalmádi near Lake Balaton, Káptalanfüred, 10.IV.1966, leg. Tóth (HNHM).

C o m m e n t : Confirmed records of this extremely rare subspecies, whose distribution is apparently of the Adriatic-Mediterranean type (see map in ASSING 2006), have become known only from Italy, southern Central Europe, and Hungary (ASSING 2006).

***Medon dilutus cephalus* KOCH 1938**

A d d i t i o n a l m a t e r i a l e x a m i n e d : Spain: 1 ex., Murcia, Jumilla, MSS layer, 1.III.2003, leg. Lencina (cAss); 3 exs., Andalucía, Córdoba, Luque, Sima Fuente Alhama, 4.XI.2007, leg. GESP (cAss); 6 exs., same data, but 26.XI.2006 (cAss); 5 exs., Andalucía, Málaga, Antequera, Complejo del Romeral, 23.II.2008, leg. GEV (cAss).

C o m m e n t : The Atlanto-Mediterranean distribution of this subspecies is illustrated by ASSING (2006).

***Medon dilutus quadriceps* (WOLLASTON 1864)**

M a t e r i a l e x a m i n e d : Morocco: 1 ex., Essaouira, XII.2002, leg. de Rougemont (cRou). Spain, Canary Islands: 2 exs., Tenerife, La Laguna, 15.X.2003, leg. Oromí (cOro, cAss).

C o m m e n t : The distribution of this subspecies includes Northwest Africa, the Canary Islands, and Sicily, possibly also the Azores (ASSING 2006). In the Canarian Islands, *M. d. quadriceps* was previously known only from Fuerteventura and Lanzarote; the above specimens from Tenerife represent a new island record.

***Medon dilutus pythonissa* (SAULCY 1864)**

M a t e r i a l e x a m i n e d : Bulgaria: 1 ex., W-Pirin, E Kresna, 41°43'N, 23°14'E, 800 m, dry oak forest, 9.IV.2005, leg. Zerche & Behne (SDEI). Cyprus: 1 ex., Troodos, 34°54'N, 32°52'E, 1200 m, 11.IV.2008, leg. Lompe (cAss). Turkey: 4 exs. [partly teneral], Amasya, Sakarat Dağı, 8.5 km E Amasya, 40°40'N, 35°56'E, 1060 m, stream bank, sifted from moist leaves, 18.VII.2008, leg. Assing & Schülke (cAss, cSch); 1 ex., Kahramanmaraş, Imah, 37°21'N, 36°44'E, 850 m, 21.IV.2009, leg. Brachat & Meybohm (cAss).

Comment: This subspecies is common and widespread in the Eastern Mediterranean region; for maps illustrating its distribution see ASSING (2004a, 2006).

***Medon subcoriaceus* (WOLLASTON 1864)**

Material examined: Canary Islands: Tenerife: 11 exs., El Tanque, 28°22'N, 16°46'W, 500 m, fallow, 12.X.1998, leg. Behne (SDEI); 1 ex., Teno, 2 km W Erjos, 800-900 m, 12.X.1998, leg. Behne (SDEI); 1 ex., Anaga, El Pijaral, 800-850 m, laurisilva, 4.VII.1995, leg. Zerche (SDEI); 1 ex., Anaga, S Bailodera, laurisilva, 2.VII.1995, leg. Zerche (SDEI). L a G o m e r a : 5 exs., El Cedro, Bco. del Cedro, 28°08'N, 17°13'W, 900 m, 6.X.1998, leg. Behne (SDEI).

Comment: *Medon subcoriaceus* is endemic to the Canary Islands, where it has been recorded from all the larger islands except Lanzarote (ASSING 2006).

***Medon antricola* ASSING 2006**

Material examined: Canary Islands, El Hierro: 3 exs. [2 teneral], Cueva Fileba, 20.II.2006, leg. Oromí (cAss).

Comment: This recently discovered cave species is endemic to the Canarian island El Hierro (ASSING 2006).

***Medon castaneus* (GRAVENHORST 1802)**

Material examined: Germany: 1 ex., Fichtelgebirge, Göringsreuth, sifted, 24.IV.1954, leg. Papperitz (SMNS); 1 ex., Bad Hersfeld, in *Talpa* nest, 18.IV.1978, leg. Folwaczny (SMNS); 7 exs., Niedersachsen, Hannoversch-Münden, in *Talpa* nest, 27.XII.1933, leg. Folwaczny (SMNS); 1 ex., Carlshafen, in *Talpa* nest, 10.II.1934, leg. Folwaczny (SMNS); 1 ex., "N. Neuendorf", *Talpa* nest, 24.III.1923 (MNHUB). Italy: 1 ex., Trentino-Alto Adige, Bressanone, 15.XII.1953 (SMNS).

Comment: The distribution of this nidicolous species is of the expansive Atlanto-Mediterranean type; for a map see ASSING (2006).

***Medon rufiventris* (NORDMANN 1837)**

Material examined: Romania: 1 ex., Oravița env., Marilla (HNHM); 2 exs., Băile Herculane (HNHM). Turkey: 1 ex., Isparta, Eğridir; Kovada, V.1973, leg. Bernhauer (SMNS).

Comment: *Medon rufiventris*, which is apparently associated with dead wood, has an expansive Ponto-Mediterranean distribution (Assing 2004a, 2005a, 2005b, 2006). For a map see ASSING (2006).

***Medon africanus* (FAUVEL 1872)**

Material examined: Algeria: 2 exs., Bou Berak near Dellys (MNHNP).

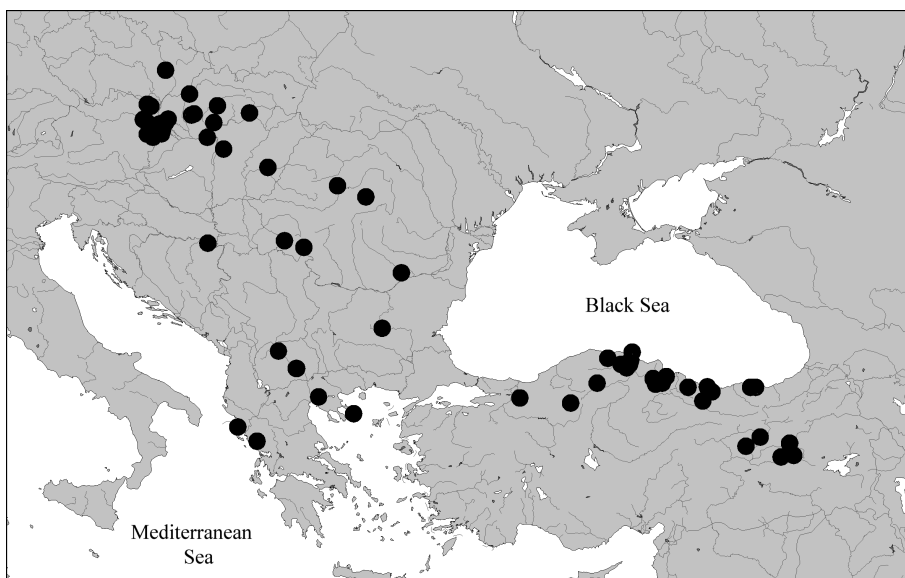
Comment: The distribution of *M. africanus*, the sister species of *M. rufiventris*, is confined to Tunisia and Algeria (ASSING 2006).

***Medon ferrugineus* (ERICHSON 1837) (Map 1)**

Material examined: Slovakia: 1 ex., Nitra env., Jelenec, 6.VI.1978, leg. Dieckmann (MNHUB). Greece: 1 ex., Ipiros, 36 km SE Igoumenitsa, N Gliki, 39°21'N, 20°37'E, 570 m, *Quercus ilex*, 2.X.2007, leg. Behne (cAss); 2 exs., Corfu, 18 km N Kerkira, Loutses, Megali Grava,

39°47'N, 19°53'E, 480 m, oak forest, 23.IX.2007, leg. Behne (SDEI). **Turkey**: **K a s t a m o n u** : 1 ex., 30 km E Taşköprü, SE Hanönü, 41°36'N, 34°33'E, 860 m, mixed pine and oak forest, litter and soil between stones, sifted, 29.III.2009, leg. Assing (cAss); 3 exs., 30 km SE Inebolu, Hasan Dağı, S Yaralıgöz geçidi, 41°46'N, 34°03'E 1370 m, calcareous slope, under stones, 10.IV.2009, leg. Assing (cAss). **S i n o p** : 1 ex., NNE Boyabat, 41°36'N, 34°52'E, 960 m, pasture, under stones, 29.III.2009, leg. Assing (cAss); 1 ex., SSW Sinop, 41°43'N, 34°55'E, 660 m, oak forest, sifted, 29.III.2009, leg. Assing (cAss); 23 exs., 30 km NNE Boyabat, Dıranaz geçidi, 41°38'N, 34°52'E, calcareous grassland, under stones, 5.IV.2009, leg. Assing (cAss); 7 exs., same data, but litter of beech and willow, and grass roots sifted (cAss). **S a m s u n** : 2 exs., 26 km NNE Havza, 41°11'N, 35°46'E, 800 m, *Quercus-Carpinus* forest, litter sifted, 19.VII.2008, leg. Assing (cAss); 4 exs., 33 km SW Samsun, road Kavak-Asarcık, 7 km SE Kavak, 41°03'N, 36°07'E, 470 m, *Quercus-Carpinus* forest, litter sifted, 20.VII.2008, leg. Assing (cAss). **O r d u** : 2 exs., ca. 60 km S Ordu, 18 km SSE Gököy, 40°32'N, 37°41'E, 970 m, N-slope with bushes and small trees, dry litter sifted, 14.VII.2008, leg. Assing (cAss); 13 exs., road Ünye-Akkuş, 18 km NE Akkuş, 40°56', 37°07', 920 m, mixed deciduous forest (predominantly *Fagus*), litter sifted, 15.VII.2008, leg. Assing (cAss, cFel).

C o m m e n t : *Medon ferrugineus*, a Ponto-Mediterranean element whose distribution ranges from eastern Turkey to the southeast of Central Europe (Map 1), is apparently rather common in northern Turkey.



Map 1: Distribution of *Medon ferrugineus* (ERICHSON) based on revised records.

***Medon brunneus* (ERICHSON 1839)**

M a t e r i a l e x a m i n e d : **France**: 5 exs., Bretagne, Finistère, Quimperle, Forêt de Carnoet, IX.1987, leg. Frank (cAss); 1 ex., Alpes-Maritimes, Forêt de Albarée, 500-700 m, 24.VI.2004, leg. Wolf (cSch). **Germany**: **N i e d e r s a c h s e n** : 1 ex., Münden, in mushrooms, 15.IX.1938, leg. Ihssen (MNHUB). **B a d e n - W ü r t t e m b e r g** : 2 exs., Emmendingen-Sexau, Hornwald, oak and beech litter, 18.IX.2008, leg. Wolf (cSch, cAss); 1 ex., Windenreute, 6.X.1952 (MNHUB). **S a c h s e n - A n h a l t** : 1 ex., Wernigerode, in moss near stream, 16.V.1980, leg. Martin (cAss). **T h ü r i n g e n** : 1 ex., Kreis Heiligenstadt, Uder, 21.-29.VI.1990, leg. Uhlig

(MNHUB). S a c h s e n: 1 ex., Sächsische Schweiz, Schwedenlöcher, 1.IX.1970, leg. Linke (MNHUB); 1 ex., Meißen, Zadel, 9.XI.1963 (MNHUB). Austria: 1 ex., Tirol, Lkr. Kufstein, S Kössen, Hinterberg, 1000 m, 21.X.2006, leg. Wolf (cSch); 1 ex., Niederösterreich, Raxalpe, 47°45'N, 15°41'E, 670 m, 3.V.2008, leg. Assing (cAss); 7 exs., Niederösterreich, 4 km SE Hof am Leithaberge, Franz-Joseph-Warte, 47°56'N, 16°37'E, 480 m, mixed forest, 15.X.1998, leg. Zerche (SDEI, cAss). Italy: T o s c a n a: 1 ex., Toscana, Ris. Nat. Castelvecchio, 43°29'N, 10°54'E, 400 m, 9.X.2007, leg. Meybohm (cAss); 2 exs., Toscana, Iano, 43°30'N, 10°52'E, 200-300 m, 10.X.2007, leg. Meybohm (cAss). S a r d e g n a: 1 ex., Sorgono (SDEI). Hungary: 2 exs., SW Sopron, Brennbergbanya, 47°39'N, 16°29'E, 490 m, mixed forest, 16.X.1998, leg. Zerche (SDEI, cAss); 1 ex., SW Sopron, Brennbergbanya, 47°39'N, 16°29'E, 480 m, mixed forest, 16.X.1998, leg. Zerche (SDEI). Poland: 2 exs., Beskidy mts., Rytro, beech forest, 9.VIII.1978, leg. Dieckmann (MNHUB). Croatia: 1 ex., Opatija, VII.1971, leg. Liebmann (MNHUB); 1 ex., Kosinj, leg. Meusel (MNHUB). Bosnia-Herzegovina: 1 ex., Dabarsko polje, Visbaba cave, 17.-22.VI.2003, leg. Hlaváč (cTro). Yugoslavia: 1 ex., Serbia, Dimitrovgrad, Petras, 2.V.2002, leg. Stevanović (cAss). Bulgaria: 15 exs., 1 ex., Ograschden mountain, 15 km NW Petritsch, 41°30'N, 23°03'E, 1000 m, beech forest, 8.IV.2005, leg. Zerche & Behne (SDEI, cAss). Greece: 1 ex., Ipiros, N Metsovo, Milia, 39°51'N, 21°14'E, 1150 m, beech forest, 29.IX.2007, leg. Behne (SDEI); 1 ex., E-Makedonia, Falakró, 41°18'N, 24°00'E, 1200 m, leg. Bahr et al. (cSch); 5 exs., Corfu, 15 km N Kerkira, Pantokratoras mountain, 39°45'N, 19°52'E, 750 m, mixed forest, 22.IX.2007, leg. Behne (SDEI, cAss); 1 ex., Corfu, 13 km S Kerkira, Agios Matheos, 39°29'N, 19°52'E, 430 m, *Quercus ilex*, 26.IX.2007, leg. Behne (SDEI); 4 exs., Corfu, 18 km N Kerkira, Loutsos, Megali Grava, 39°47'N, 19°53'E, 480 m, oak forest, 23.IX.2007, leg. Behne (SDEI). Turkey: 1 ex., Istanbul, Belgrader Wald (MNHUB).

C o m m e n t: In many regions of the Eastern Mediterranean, *M. brunneus* is the most common representative of the genus. Its expansive Adriato-Mediterranean distribution is mapped by ASSING (2006).

***Medon piceus* (KRAATZ 1858)**

M a t e r i a l e x a m i n e d: Portugal: 2 exs., Minho, Covas/Caminha, IX.2000, leg. Messutat (SDEI, cAss). Spain: G a l i c i a: 1 ex., 2 km S Viana do Bolo, 42°10'N, 7°07'W, 700 m, chestnut litter, 5.VIII.2002, leg. Behne (SDEI). C a s t i l l a - L e ó n: 1 ex., S Ponferrada, Montes Aquilianos, Peñalba de Santiago, 42°26'N, 6°33'W, 1000 m, 7.VIII.2002, leg. Behne (cAss). C a s t i l l a - L a M a n c h a: 2 exs., Sierra de Segura, Collado Tornado, 38°22'N, 2°27'W, 850 m, 30.VII.2002, leg. Behne (SDEI); 8 exs., Sierra de Segura, ca. 15 km W Yeste, Calar de Sima, 38°21'N, 02°29'W, 1430 m, deep canyon with *Corylus*, grass, moss, and ferns, sifted, 15.III.2008, leg. Assing (cAss). A n d a l u c í a: 12 exs., Estepona, road to Ronda, 1000 m, X.1968, leg. Benick (MNHUB); 2 exs., W Almeria, Sierra de Gádor, Padules, 36°59'N, 02°46'W, 620 m, barranco, litter near small stream sifted, 18.III.2008, leg. Assing (cAss). France: 1 ex., Bretagne, Morbihan, Groix, 22.VI.1998, leg. Tiberghien (cTro); 3 exs., Hte. Garonne, Bagnères de Luchon, Juzet -> Sode/Artigue, 700-900 m, 17.VI.2004, leg. Wolf (cSch, cAss); 3 exs., "La Neuville", II.1918, leg. Salchert (MNHUB). Germany: B r a n d e n b u r g / B e r l i n: 1 ex., Oderberg, 8.VII.1971, leg. Uhlig (MNHUB); 3 exs., Potsdam, NSG Moosfenn, 13.VII.1975, leg. Uhlig (MNHUB). T h ü r i n g e n: 4 exs., Kyffhäuser, Wüstes Kalktal, 7.IX.1964, leg. Dorn (MNHUB, cAss); 1 ex., Bad Frankenhausen, Kosakenberg, 8.V.1962, leg. Dorn (MNHUB); 2 exs., Naumburg a. S., 5.III.1961, leg. Dorn (MNHUB, cAss). S a c h s e n: 1 ex., Erzgebirge, Schwarzenberg, 1974, leg. Uhlig (MNHUB). B a y e r n: 1 ex., Aschaffenburg, 27.IV.1975, leg. Elbert (cAss).

C o m m e n t: The distribution of *M. piceus* is of the expansive Atlanto-Mediterranean type; for a map see ASSING (2006).

***Medon cauchoisi* JARRIGE 1949**

M a t e r i a l e x a m i n e d : Morocco: 64 exs., Ar Rif, road Chefchaouen-Ksal el Kebr, 35°05'N, 05°25'W, 680 m, 3.-7.VI.2007, leg. Hlaváč (cAss, cFel, cSch); 8 exs., Ar Rif, Chefchaouen region, Bad Bessen env., 34°59'N, 04°51'W, 1120 m, 3.VI.2007, leg. Hlaváč (cAss, cSch); 34 exs. [1 teneral], Ar Rif, Chefchaouen env., 35°12'N, 05°19'W, 270 m, 3.VI.2007, leg. Hlaváč (cAss, cFel); 10 exs., Ar Rif, Oued Laou env., 35°29'N, 05°07'W, 200 m, 7.-9.VI.2007, leg. Hlaváč (cAss); 1 ex., Ar Rif, Chefchaouen region, road Bad Berret - Bad Bessen, 35°01'N, 05°00'W, 1400 m, 3.-6.VI.2007, leg. Hlaváč (cAss); 1 ex., Tétouan (NHMW); 2 exs., "Koriffa", leg. Thery (NHMW, cAss). Spain: 2 exs., Valencia, Sierra de Utiel, 13 km NE Utiel, 39°39'N, 1°09'W, 1200 m, *Quercus ilex* forest, 2.VIII.2002, leg. Behne (SDEI, cAss); 1 ex., Valencia, Alicante, Sierra de Bernia, 38°41'N, 0°03'W, 600 m, 5.X.2008, leg. Meybohm (cAss). France: 6 exs., Pyrénées-Orientales, Col de Quillat, 600 m, 15.VI.2004, leg. Wolf (cSch, cAss).

C o m m e n t : For a map illustrating the Atlanto-Mediterranean distribution of this species see ASSING (2006).

***Medon despectus* (FAIRMAIRE 1860)**

M a t e r i a l e x a m i n e d : Algeria: 1 ex., Algier (MHNG).

C o m m e n t : The distribution of *M. despectus* is confined to Algeria, Tunisia, and the Italian island Pantelleria (ASSING 2005a, 2006). Previous records from Spain and Morocco (see SMETANA 2004) are evidently based on a confusion with the similar *M. cauchoisi*.

***Medon semiobscurus* (FAUVEL 1875)**

M a t e r i a l e x a m i n e d : Greece: S a m o s : 2 exs., Manolates, 100-400 m, 7.-16.VII.2007, leg. Bulirsch (cRou, cAss). Turkey: A n t a l y a : 1 ex., Olimpos, NW Ovacık, 36°39'N, 30°25'E, 1255 m, 12.IV.2008, leg. Brachat & Meybohm (cAss); 5 exs., Köprü valley, N Beşkonak, 37°13'N, 31°13'E, 500 m, 13.IV.2008, leg. Brachat & Meybohm (cAss); 1 ex., Köprü valley, Çaltepe, 37°18'N, 31°11'E, 540 m; 13.IV.2008, leg. Brachat & Meybohm (cAss); 2 exs., Köprü valley, Çaltepe, 37°19'N, 31°11'E, 430 m, 13.IV.2008, leg. Brachat & Meybohm (cAss); 1 ex., Anamur-Gazipaşa, Kalandere, 36°07'N, 32°34'E, 40 m, 24.IV.2008, leg. Brachat & Meybohm (cAss); 3 exs., 5 km NE Gazipaşa, 36°17'N, 32°22'E, 50 m, 24.IV.2008, leg. Brachat & Meybohm (cAss); 3 exs., Alanya-Taşkent, Karapınar, 36°37'N, 32°25'N, 1090 m, 25.IV.2008, leg. Brachat & Meybohm (cAss); 2 exs., Alanya-Taşkent, 30 km from Alanya, 36°32'N, 32°04'N, 1140 m, 25.IV.2008, leg. Brachat & Meybohm (cAss); 5 exs., N Alanya, 5 km W Gündoğmus, 36°49'N, 31°57'E, 980 m, 26.IV.2008, leg. Brachat & Meybohm (cAss); 9 exs., N Side, Yaylaalan, 36°57'N, 31°30'E, 460 m, 27.IV.2008, leg. Brachat & Meybohm (cAss); 3 exs., Köşekbaşı, 36°08'N, 32°46'E, 150 m, 23.IV.2008, leg. Brachat & Meybohm (cAss). I s p a r t a : 1 ex., Kovada Gölü, 37°38'N, 30°52'E, 910 m, lakeshore, 15.IV.2008, leg. Brachat & Meybohm (cAss). A d a n a : 1 ex., Kozan-Mansurlu, 37°35'N, 35°30'E, 500 m, 18.IV.2009, leg. Brachat & Meybohm (cAss). K a h r a m a n m a r a ş : 1 ex., Çınarpinar Dağı, Çınarpinar env., 37°39'N, 36°33'E, 930 m, 22.IV.2009, leg. Brachat & Meybohm (cAss). H a t a y : 1 ex., Kızıldağ, SE Arsuz, 36°21'N, 35°57'E, 445 m, 10.IV.2009, leg. Brachat & Meybohm (cAss); 1 ex., Kızıldağ, Madenli, 36°25'N, 36°07'E, 1120 m, 11.IV.2009, leg. Brachat & Meybohm (cAss); 1 ex., Kızıldağ, Teknepinar, 36°13'N, 35°57'E, 360 m, 11.IV.2009, leg. Brachat & Meybohm (cAss). Israel: 4 exs., North District, Upper Galilee, Ya'ar Bar'am, ca. 1.5 km W Jish (Gush Khalav), 700 m, pine forest, 9.III.2008, leg. Wrase (cSch, cAss).

C o m m e n t : *Medon semiobscurus* is distributed and common in Anatolia and the Middle East, eastwards to Iran. Its distribution borders parapatrically on that of the closely related *M. brunneus*. In Greece, *M. semiobscurus* has been recorded only from the islands Samos, Rhodos, and Lesbos, from where *M. brunneus* is unknown, and in

Turkey, *M. brunneus* is confined to the very northwest, where *M. semiobscurus* is absent (ASSING 2004a, 2005a, 2005b, 2006).

Several specimens collected in Turkey in April are teneral.

***Medon fuscus* (MANNERHEIM 1830)**

M a t e r i a l e x a m i n e d : France: 1 ex., "La Neuville", leg. Salchert (MNHUB). Germany: Nordrhein-Westfalen: 1 ex., Bonn, 22.V. (MNHUB). Bayern: 1 ex., München (MNHUB). Brandenburg: 1 ex., Oderberg, 8.VII.1971, leg. Uhlig (MNHUB); 1 ex. [teneral], Chorin env., 31.VII.1921, leg. Müller (cAss). Thüringen: 2 exs., Bad Kösen, Himmelreich, 30.IV.1950, leg. Dorn (MNHUB, cAss). 1 ex., Kyffhäuser, Grauer Berg, 13.V.1959, leg. Dorn (MNHUB). Sachsen: 1 ex., Leipzig, Kleinzschocher, 13.VI.1950, leg. Dorn (MNHUB); 1 ex., Leipzig, Connewitzer Holz, 6.V.1952, leg. Dorn (MNHUB); 1 ex., Leipzig, Dölzig, 29.XI., leg. Dorn (MNHUB); 1 ex., Wernsdorf, 14.V.1944, leg. Dorn (MNHUB). Romania: 1 ex., Brasov env., Hossufalu, leg. Verhoeff (MNHUB). Greece: Peloponnisos: 1 ex., Feneos, 37°55'N, 22°18'E, IV.-VI.2006, leg. Miksch (cSch); 1 ex., Parnon, S Platanaki, 36°10'N, 22°39'E, 1240 m, *Abies cephalonica* forest, 4.V.2007, leg. Schnitter & Neumann (cApf). Turkey: Kastamonu: 1 ♀, 30 km E Taşköprü, SE Hanönü, 41°36'N, 34°33'E, 860 m, mixed pine and oak forest, litter and soil between stones, sifted, 29.III.2009, leg. Assing (cAss). Sinop: 11 exs., ca. 22 km S Sinop, N Lala, 41°53'N, 35°03'E, 160 m, oak and laurel forest with undergrowth, sifted, 31.III.2009, leg. Assing (cAss); 1 ex., 15 km SW Sinop, S Kılıçlı, 41°57'N, 35°02'E, 80 m, grassy road margin, grass between shrubs, sifted, 3.IV.2009, leg. Assing (cAss); 1 ex., ca. 35 km SW Sinop, 41°54'N, 34°54'E, 325 m, chestnut forest, stream bank, sifted, 1.IV.2009, leg. Assing (cAss). Niğde: 1 ex., N Pozanti, 20 km S Çamardı, 37°40'N, 34°59'E, 21.V.2009, leg. Meybohm (cAss). Gaziantep: 1 ex., Kilis, 2 km S Polateli road, 36°46'N, 37°04'E, 9.III.2008, leg. Yağmur (cAss). Maridin: 1 ex., Yeşilli, 28.I.2008, leg. Anlaş (cAnl). Locality not specified or illegible: 2 exs. (MNHUB).

C o m m e n t : *Medon fuscus* is the most widespread representative of the *M. fuscus* group. The expansive Ponto-Mediterranean distribution of this species is mapped by ASSING (2006).

***Medon lanugo* ASSING 2004**

M a t e r i a l e x a m i n e d : Turkey: Konya: 8 exs., Taşkent, direction Balçılar, 36°55'N, 32°30'E, 1550 m, 21.IV.2008, leg. Brachat & Meybohm (cAss). Hatay: 2 exs., Soğukoluk, 36°30'N, 36°09'E, 800 m, 12.IV.2009, leg. Brachat & Meybohm (cAss); 1 ex., Nur Dağları, E Dörtöyl, 36°51'N, 36°17'E, 300 m, 20.IV.2009, leg. Brachat & Meybohm (cAss).

C o m m e n t : The known distribution of this species is confined to Anatolia (ASSING 2004a, 2005a).

***Medon lydicus* ASSING 2004 (Map 2)**

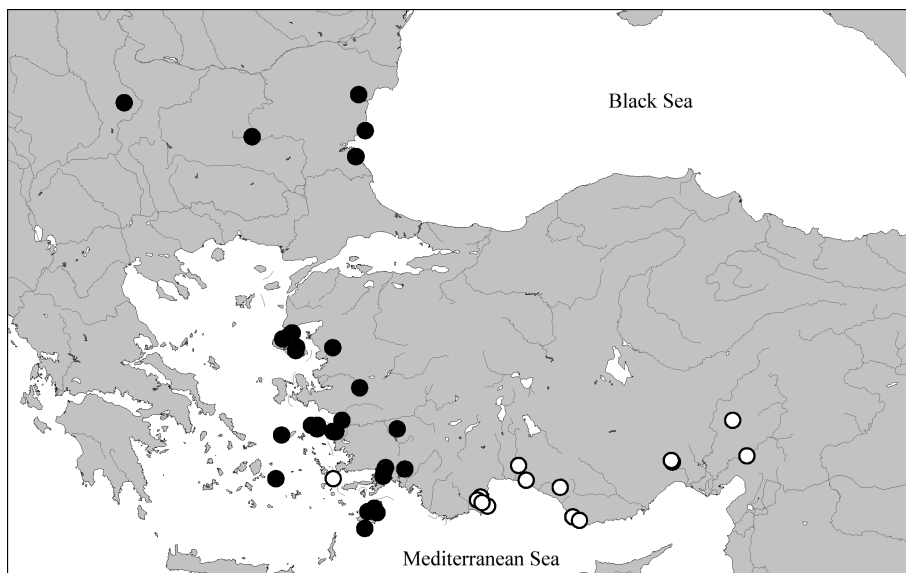
M a t e r i a l e x a m i n e d : Serbia: 1 ex., Pirot env., meadow, under stone, 30.IV.2002, leg. Hlaváč (cAss). Greece: Samos: 2 exs., SW Karlovasi, 100 m, stream in forest, 13.VII.2007, leg. Bulirsch (cRou); 4 exs., Manolates, 100-400 m, 7.-16.VII.2007, leg. Bulirsch (cRou, cAss); 1 ex., Karlovasi, 11.-16.IX.1996, leg. Wendt & Hieke (MNHUB).

C o m m e n t : The distribution of *M. lydicus* ranges from western Anatolia and the Greek islands Rhodes, Samos, Ikaria, and Lesbos across Bulgaria to southeastern Yugoslavia (ASSING 2004a, 2005a, 2005b, 2007b). The specimen from Serbia represents a new country record and considerably expands the known distribution of the species north-westwards (Map 2).

***Medon subfuscus* FAGEL 1969 (Map 2)**

M a t e r i a l e x a m i n e d : Greece: 1 ex., Dodekanes, Kós, X.1984 (SMNS). Turkey: 1 ex., Antalya, Anamur-Gazipaşa, Kalandere, 36°07'N, 32°34'E, 40 m, 24.IV.2008, leg. Brachat & Meybohm (cAss).

C o m m e n t : *Medon subfuscus* was previously known only from southern Anatolia westwards to Antalya (ASSING 2004a, 2005a). The specimen from Kós represents the first record from Greece.



Map 2: Distributions of *Medon lydicus* BORDONI (filled circles) and *M. subfuscus* FAGEL (open circles) based on revised records.

***Medon lindbergi* SCHEERPELTZ 1958**

M a t e r i a l e x a m i n e d : Turkey: 11 exs., Hatay, Harbiye, 36°08'N, 36°08'E, 200 m, 13.IV.2009, leg. Brachat & Meybohm (cAss).

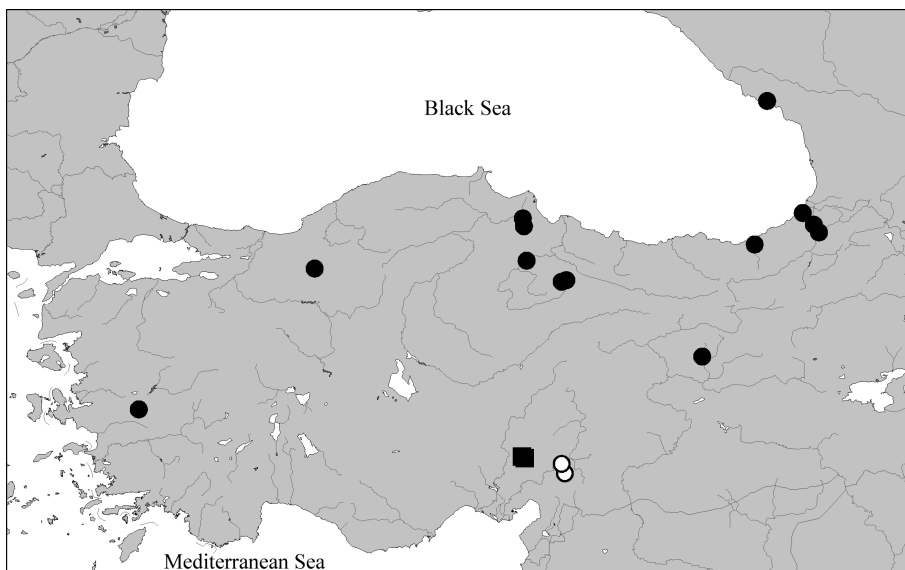
C o m m e n t : The distribution of this species is confined to the Middle East from central southern Anatolia to Israel (ASSING 2004a, 2004b, 2005, 2007a).

***Medon abantensis* BORDONI 1980 (Map 3)**

M a t e r i a l e x a m i n e d : Turkey: Tunceli: 6 exs., Halvoru su kaynağı, 2 km E Karşilar, 39°11'N, 39°28'E, 965 m, 13.IX.2007, leg. Anlaş (cAnl, cAss). A m a s y a : 6 exs., Sakarat Dağı, 8.5 km E Amasya, 40°40'N, 35°56'E, 1060 m, stream bank, sifted from moist leaves, 18.VII.2008, leg. Assing & Schülke (cAss, cSch). T o k a t : 1 ex., 7 km NE Tokat, 40°21'N, 36°38'E, 600 m, flood plain forest (predominantly *Alnus*), litter sifted, 16.VII.2008, leg. Assing (cAss); 3 exs., 16 km ENE Tokat, 40°22'N, 36°44'E, 915 m, mixed deciduous forest (predominantly *Quercus*), moist litter sifted, 16.VII.2008, leg. Schülke (cSch). S a m s u n : 14 exs. [partly teneral], 31 km NE Havza, 41°12'N, 35°52'E, 670 m, *Fagus* forest, litter sifted,

19.VII.2008, leg. Assing (cAss); 27 exs. [partly teneral], 41 km W Samsun, 27 km S Bafra, 41°19'N, 35°51'E, 220 m, stream valley, *Fagus* forest with scattered *Alnus*, litter sifted, 21.VII.2008, leg. Assing & Schülke (cAss, cFel, cSch). Georgia: 3 exs., Abkhazia, W-Caucasus, Novyi Afon, *Fagus orientalis* forest, 26.VII.2002, leg. Koval (cTro, cAss).

C o m m e n t : The distribution of *M. abantensis* ranges from western Anatolia (Izmir) to Georgia (ASSING 2004a, 2004b, 2007b). An updated illustration is given in Map 3. A considerable proportion of the Turkish specimens collected in July are teneral.



Map 3: Distributions of *Medon abantensis* BORDONI (filled circles), *M. solitarius* nov.sp. (open circles), and *M. meybohmi* ASSING (squares), based on revised records.

***Medon meybohmi* ASSING 2007 (Map 3)**

M a t e r i a l e x a m i n e d : Turkey: A d a n a : 2 exs., road Kozan-Feke, 37°35'N, 35°50'E, 395 m, 25.IV.2007, leg. Meybohm & Brachat (cAss); 5 exs., road Kozan-Feke, 37°41'N, 35°51'E, 775 m, 16.IV.2007, leg. Meybohm & Brachat (cAss); 3 exs., road Kozan-Mansurlu, 37°35'N, 35°30'E, 500 m, 18.IV.2007, leg. Meybohm & Brachat (cAss).

C o m m e n t : The above specimens were collected at and near the type locality of this recently described species (ASSING 2007c) (Map 3).

***Medon fusculoides* COIFFAIT 1969 (Map 4)**

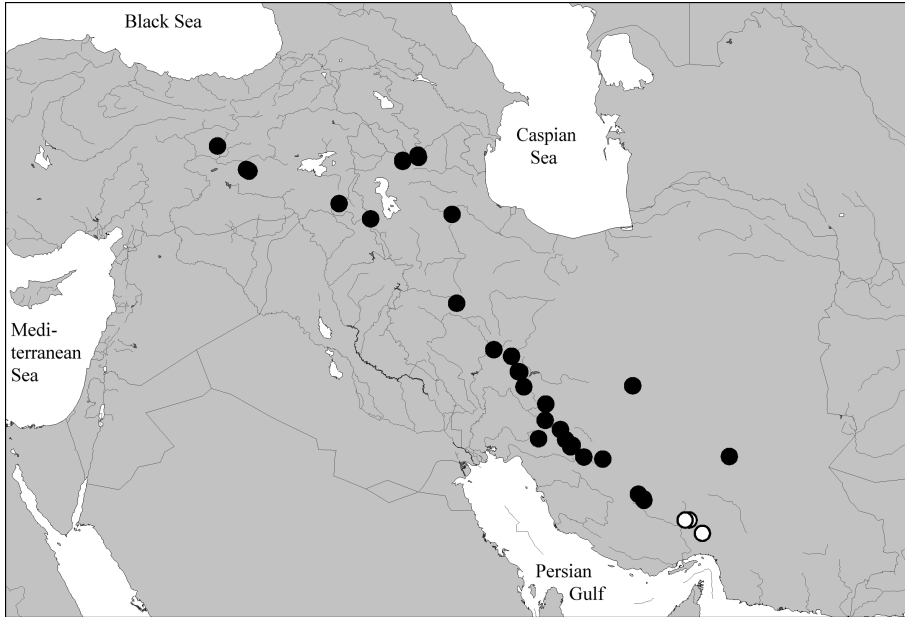
M a t e r i a l e x a m i n e d : Iran: 1 ex., Kerman province, pass Mahan-Sirch, 30°12'N, 57°24'E, 2870 m, 30.IV.2007, leg. Frisch & Serri (MNHUB).

C o m m e n t : The distribution of *M. fusculoides* ranges from eastern Anatolia to southern and eastern Iran (Map 4).

***Medon serriae* ASSING 2007 (Map 4)**

Material examined: Iran: 14 exs., Hormozgan, 9 km SW Hajiabad, 28°15'N; 55°51'E, 840 m, 22.IV.2006, leg. Frisch & Serri (MNHUB, cAss).

Comment: *Medon serriae* has become known only from southwestern Iran (Map 4).



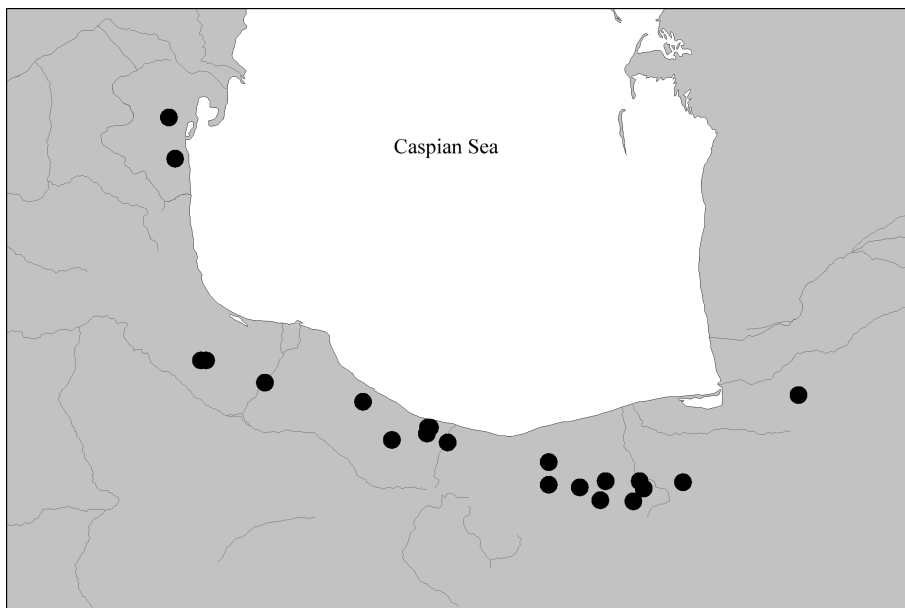
Map 4: Distributions of *Medon fusculoides* COIFFAIT (filled circles) and *M. serriae* ASSING (open circles), based on revised records.

***Medon sparsiventris* EPPELSHEIM 1889 (Map 5)**

Material examined: Iran: Mazandaran: 1 ex., Elburz, 25 km S Amol, western side valley of Heraz, 490-560 m, 29.VI.1978, leg. Martens & Pieper (SMNS); 1 ex., between Marzan and Chalus, 21.-22.V.2007, leg. Anistschenko (cAss); 2 exs., 12 km E Kiyasar, Alikolar, 36°13'N, 53°39'E, 1590 m, 9.VI.2006, leg. Frisch & Serri (MNHUB, cAss); 8 exs., Ramsar county, Eshkatechal, 36°51'N; 50°33'E, 1050 m, sifted, 6.VI.2008, leg. Pütz (cPüt, cAss); 5 exs., Amol county, 10 km S Amol, 36°23'N, 52°21'E, 2040 m, leaf litter sifted, 2.VI.2008, leg. Pütz (cPüt, cAss); 5 exs., Sari county, Mohammadabad, 2.2 km NE Bendela, 36°04'N, 53°10'E, 1530 m, beech forest, 30.V.2008, leg. Pütz (cPüt, cAss); 11 exs., Sari county, Mohammadabad, NE Sangdeh, 36°04'N, 53°10'E, 1530 m, beech forest, 29.V.2008, leg. Pütz (cPüt, cAss); 7 exs., Sari county, Mohammadabad, E Qolqol, 36°10'N, 53°16'E, 920 m, leaf litter sifted, 29.V.2008, leg. Pütz (cPüt, cAss); 4 exs., Sari county, Mohammadabad, 1 km W Afra Chal, 36°14'N, 53°14'E, 520 m, leaf litter sifted, 30.V.2008, leg. Pütz (cPüt, cAss); 16 exs., Chalus county, 10 km SE Abbasabad, 36°39'N, 51°12'E, 150 m, small stream, 4.VI.2008, leg. Pütz (cPüt, cAss); 7 exs., Chalus county, 10 km SE Abbasabad, 36°39'N, 51°11'E, 280 m, leaf litter, 4.VI.2008, leg. Pütz (cPüt, cAss); 7 exs., Chalus county, N Keldardash, 36°36'N, 51°10'E, 1250 m, beech forest, 3.VI.2008, leg. Pütz (cPüt, cAss); 15 exs., Babol county, 2 km SW Firuz Jah, 36°11'N, 52°39'E, 840 m, small stream, 31.V.2008, leg. Pütz (cPüt, cAss); 4 exs., Tonekabon county, 4.5 km SW Khanian, Shezar forest, 36°33'N, 50°50'E, 940 m, leaf litter sifted, 5.VI.2008, leg. Pütz (cPüt, cAss). Gilan: 1 ex., Fuman county, Masuleh-Khalkhal road, 4 km NW Masuleh, 37°10'N, 48°59'E, 1400 m, leaf litter

sifted, 8.VI.2008, leg. Pütz (cPüt); 2 exs., Fuman county, below Masuleh, 37°10'N, 49°02'E, 670 m, sifted, 8.VI.2008, leg. Pütz (cPüt); 14 exs., Rasht county, 29 km S Rasht, 37°00'N; 49°36'E, 140 m, sifted, 7.VI.2008, leg. Pütz (cPüt, cAss); 1 ex., Talysh mts., Hashtpar, 37°48'N, 48°54'E, leg. Boháč (cBoh).

C o m m e n t : This species is distributed in northern Iran and Azerbaijan, near the coast of the Caspian Sea (Map 5). Unlike *M. fusculoides*, which too is widespread and common in Iran and which was predominantly found near streams and rivers, *M. sparsiventris* appears to inhabit the leaf litter layer of forests.



Map 5: Distribution of *Medon sparsiventris* EPPELSHEIM, based on revised records.

Medon ripicola (KRAATZ 1854)

A d d i t i o n a l m a t e r i a l e x a m i n e d : Portugal: 2 exs., Vila do Conde, 10.X.1969, leg. Azevedo (NHMW). Spain: 1 ex., Galicia, Bertamiráns, Rio Saiz, 1.IV.1986, leg. Cobo (MNHUB); 1 ex., País Vasco, Guipúzcoa, Oyarzuu, 25.VII.1969, leg. Besuchet (MHNG); 3 exs., Aragón, Teruel, Rubielos de Mora, 29.IX.1971, leg. Comellini (MHNG). France: Rhône-Alpes: 1 ex., Haute-Savoie, Malagny near Viry, 14.XII.1963, leg. Comellini (MHNG); 1 ex., Hautes-Pyrénées, Tourmalet, leg. Rougemont (cRou); 1 ex., "Hisp. bor." (MNHUB). Germany: 1 ex., Bayern, Garmisch, bank of Loisach river, 4.VII.1932, leg. Ihssen (MNHUB); 1 ex., same data, but 30.VI.1932 (MNHUB); 1 ex., Bayern, Gr. Hesselohhe, 25.VIII.1931, leg. Ihssen (MNHUB); 1 ex., Brandenburg, Kremmer Luch, 28.IV.1912, leg. Spaney & Heyn (MNHUB). Italy: 1 ex., Lago di Garda, Malcesine, 18.V.1956, leg. Benick (cAss). Macedonia: 2 exs., Kumanovo, 14.VI.1958 (cBoh, cAss).

C o m m e n t : A map illustrating the expansive Atlanto-Mediterranean distribution of *M. ripicola* is provided by ASSING (2006). The specimens from Macedonia represent a new country record.

***Medon solitarius* nov.sp.** (Figs 1-9, Map 3)

Type material: Holotype ♂: "N37°19'31,5", E36°42'17,5 / TR - Kahramanmaraş (26), sw Türkoğlu, Str. İmalı-Bahçe, 1050-1100 m, 21.IV.2009, leg. Meybohm & Brachat / Holotypus ♂ *Medon solitarius* sp.n. det. V. Assing 2009" (cAss). Paratype ♀: "N37°28'55 E36°38'10 (30), TR Kahramanmaraş, Cimen Dağı, Büyüksir, 750-800 m, Brachat & Meybohm, 1.5.2007" (cAss).

Description: Body length 5.2-6.0 mm. Habitus as in Fig. 1. Coloration: forebody dark reddish; abdomen reddish-brown with paler apex (segments VII/VIII-X); legs and antennae reddish to reddish-brown.

Head weakly oblong, 1.02-1.06 times as long as wide; punctation very dense, fine, and shallow; interstices very narrow, much narrower than diameter of punctures; surface almost matt (Fig. 2); eyes moderately small (Fig. 3), weakly projecting from contours of head, approximately 0.4 times as long as postocular region in dorsal view. Antennae long (1.9-2.0 mm) and slender; antennomere III approximately 3 times as long as wide, X as wide as long or weakly oblong.

Pronotum approximately as wide as long; surface, except for a weakly shiny longitudinal rudiment in posterior half of midline, matt due to very coarse microsculpture; punctation dense, fine, and shallow, barely visible in the microsculpture (Fig. 2).

Elytra 1.03-1.06 times as long as pronotum (Fig. 2); punctation conspicuously dense, fine, and weakly defined; surface with subdued shine, but somewhat more glossy than head and pronotum. Hind wings fully developed. Legs slender, metatibia approximately as long as elytra.

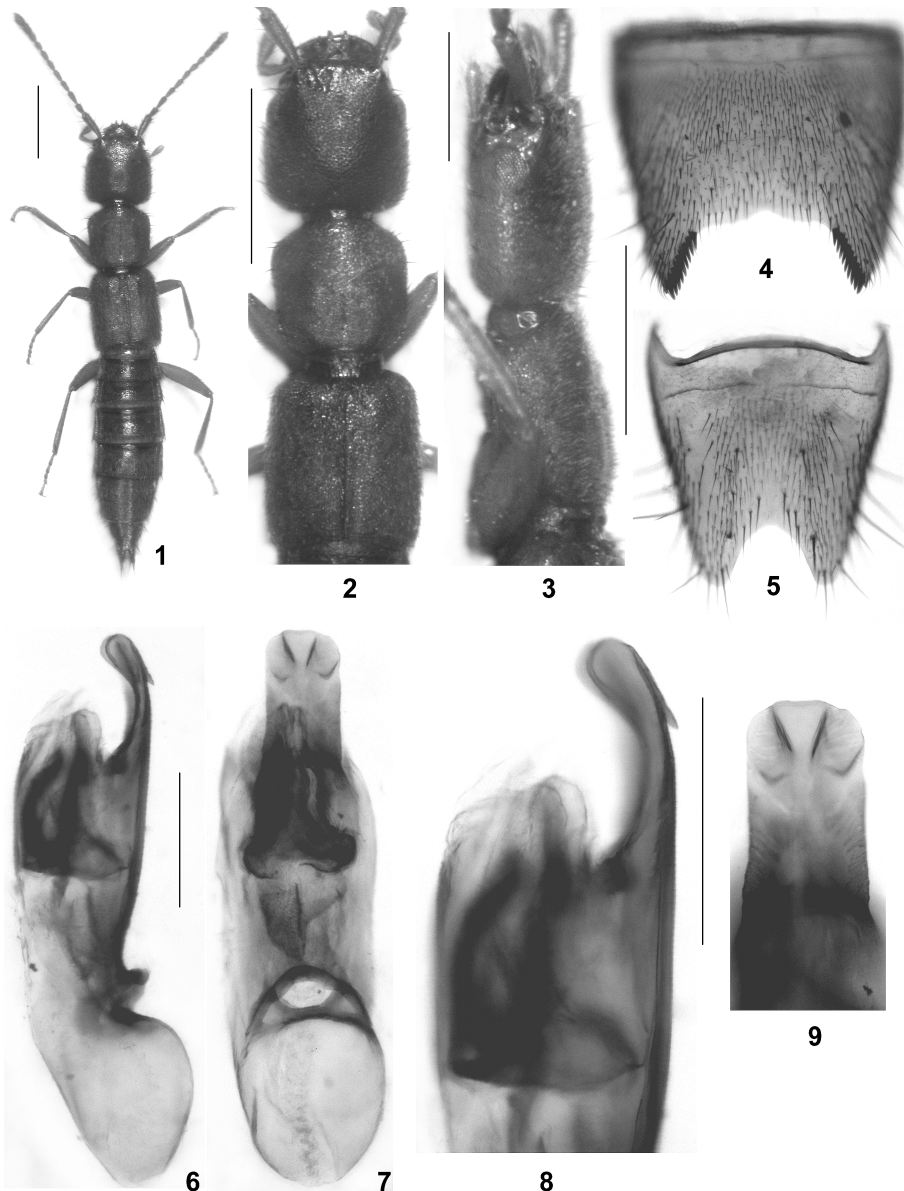
Abdomen slightly narrower than elytra; punctation fine and dense; interstices with distinct microsculpture; posterior margin of tergite VII with pronounced palisade fringe.

♂: posterior excavation of sternite VII deep and of broadly trapezoid shape, on either side without distinct clusters of thin long setae, and with lateral combs each composed of 9-10 palisade setae (Fig. 4); posterior excision of sternite VIII deeply concave (Fig. 5); aedeagus with apex of highly distinctive shape (Figs 6-9).

Comparative notes: Based on the male primary and secondary sexual characters, the new species belongs to the *M. fuscus* group. The similar shape of the ventral process of the aedeagus suggests that it is most closely related to *M. lamellatus* ASSING 2004 from central southern Anatolia. The apex of the ventral process also somewhat resembles that of *M. meybohmi* (known only from Adana province). *Medon solitarius* is readily distinguished from all other representatives of the *M. fuscus* group particularly by its large size, the comparatively large and slender head, the long and slender antennae, the conspicuously fine and dense punctation of the forebody, the almost completely matt head and abdomen, as well as by the distinctive morphology of the aedeagus. For illustrations of the male primary and secondary sexual characters of other species of the *M. fuscus* group see ASSING (2004a, 2004b, 2005a, 2006, 2007b, 2007c).

Etymology: The name (Latin, adjective) refers to the fact that, unlike most other *Medon* species, *M. solitarius* has been collected only in single specimens.

Distribution and bionomics: The species is known only from two localities in Kahramanmaraş province, central southern Anatolia (Map 3). Its morphology (large size, slender appendages, reddish coloration, relatively small eyes), as well as the fact that only two specimens have been collected in an area repeatedly studied by several colleagues suggest that *M. solitarius* apparently lives in a cryptic subterranean habitat (mammal nests?). The holotype was discovered under a stone (BRACHAT pers. comm.).



Figs 1-9: *Medon solitarius* nov.sp.: (1) habitus; (2) forebody; (3) head and pronotum in lateral view; (4) male sternite VII; (5) male sternite VIII; (6-7) aedeagus in lateral and in ventral view; (8) apical portion of aedeagus in lateral view; (9) apical portion of aedeagus in ventral view. Scale bars: 1-2: 1.0 mm; 3-5: 0.5 mm; 6-9: 0.2 mm.

Acknowledgements

I am indebted to the colleagues indicated in the material section for the loan and gift of material, respectively. Special thanks are due to Volker Brachat (Geretsried) and Heinrich Meybohm (Großhansdorf) for the generous gift of the Staphylinidae collected during their 2008 and 2009 field trips to southern Turkey. Benedikt Feldmann (Münster) proof-read the manuscript.

Zusammenfassung

Medon solitarius nov.sp. (Türkei: Kahramanmaraş) aus der *M. fuscus*-Gruppe und nah verwandt mit *M. lamellatus* ASSING 2004 und *M. meybohmi* ASSING 2007 wird beschrieben und abgebildet. Die Gattung *Medon* STEPHENS 1833 ist damit derzeit mit 58 Arten und Unterarten in der Westpaläarktis vertreten; die Identität fünf weiterer Namen ist ungeklärt. Weitere Nachweise von 33 Arten und Unterarten werden gemeldet, darunter mehrere Erstnachweise. Die Verbreitung von neun Arten wird anhand von Karten illustriert.

References

- ASSING V. (2004a): A revision of the *Medon* species of the Eastern Mediterranean and adjacent regions (Insecta: Coleoptera: Staphylinidae: Paederinae). — *Bonner zoologische Beiträge* **52**: 33-82.
- ASSING V. (2004b): A revision of Western Palaearctic *Medon* STEPHENS (Coleoptera: Staphylinidae, Paederinae). Supplement I. — *Linzer biologische Beiträge* **36** (2): 655-662.
- ASSING V. (2005a): A revision of Western Palaearctic *Medon*. IV. A new species and new records from Iran, and a catalogue of species (Coleoptera: Staphylinidae, Paederinae). — *Linzer biologische Beiträge* **37** (2): 1027-1034.
- ASSING V. (2005b): Two new species and new records of Staphylinidae from the Greek island Lesbos (Insecta: Coleoptera). — *Linzer biologische Beiträge* **37** (2): 1035-1046.
- ASSING V. (2006): A revision of Western Palaearctic *Medon*: the species of the Atlantic Islands, the Western Mediterranean, and Europe, except for the southeast (Insecta: Coleoptera: Staphylinidae: Paederinae). — *Bonner zoologische Beiträge* **54** (2005): 25-95.
- ASSING V. (2007a): New species and additional records of Staphylinidae from Turkey V (Coleoptera). — *Stuttgarter Beiträge zur Naturkunde Serie A (Biologie)* **700**: 1-64.
- ASSING V. (2007b): A revision of Western Palaearctic *Medon*. V. A new species from Iran and additional records (Coleoptera: Staphylinidae, Paederinae). — *Linzer biologische Beiträge* **39** (1): 23-32.
- ASSING V. (2007c): A revision of Western Palaearctic *Medon*. VI. A new species from Turkey and additional records (Coleoptera: Staphylinidae, Paederinae). — *Linzer biologische Beiträge* **39** (2): 791-797.
- FELDMANN B. (2007): A new *Medon* species from Afghanistan (Coleoptera: Staphylinidae, Paederinae). — *Linzer biologische Beiträge* **39** (2): 853-856.
- SMETANA A. (2004): Subfamily Paederinae FLEMING, 1821. — In: LÖBL I. & A. SMETANA (eds), *Catalogue of Palaearctic Coleoptera. Volume 2. Hydrophiloidea – Histeroidea – Staphylinoidea*. — Apollo Books, Stenstrup: 579-624.

Author's address:

Dr. Volker ASSING
Gabelsbergerstr. 2
D-30163 Hannover, Germany
E-mail: vassing.hann@t-online.de