

# A new fossil eomeropid (Insecta, Mecoptera) from the Jiulongshan Formation, Inner Mongolia, China

**Junxia ZHANG**  
**Chungkun SHIH**

College of Life Sciences, Capital Normal University,  
105 Xisanhuanbeilu, Haidian District, Beijing, 100048 (P. R. China)  
junxiazhang2008@foxmail.com  
chungkun.shih@gmail.com

**Julián Fernando PETRULEVIČIUS**

Div. Paleozoología Invertebrados, Museo de La Plata-UNLP-CONICET,  
Paseo del Bosque s/n, La Plata 1900 (Argentina)  
levicius@fcnym.unlp.edu.ar

**Dong REN**

College of Life Sciences, Capital Normal University,  
105 Xisanhuanbeilu, Haidian District, Beijing, 100048 (P. R. China)  
rendong@mail.cnu.edu.cn

Zhang J. X., Shih C., Petrulevičius J. F. & Ren D. 2011. — A new fossil eomeropid (Insecta, Mecoptera) from the Jiulongshan Formation, Inner Mongolia, China. *Zoosystema* 33 (4): 443-450. DOI: 10.5252/z2011n4a2.

## ABSTRACT

A new genus and species of eomeropid, *Jurathauma simplex* n. gen., n. sp., is described from the Middle Jurassic of Inner Mongolia, China. It can be distinguished from all known eomeropid genera by a combination of these characters: two rows of cells formed by crossveins between costal margin and ScP; RP + MA with five branches; MP with five branches; and three anal veins. The presence of this new species and *Tsuchingothauma shihi* Ren & Shih, 2005 of the same family in this locality suggests the early diversification of eomeropids with cockroach-like body during the Middle Jurassic.

## KEY WORDS

Insecta,  
Mecoptera,  
Eomeropidae,  
Middle Jurassic,  
China,  
new genus,  
new species.

## RÉSUMÉ

*Un nouveau Eomeropidae fossile (Insecta, Mecoptera) de la Formation Jiulongshan, Mongolie intérieure, Chine.*

Un nouveau genre et une nouvelle espèce d'Eomeropidae, *Jurathauma simplex* n. gen., n. sp., est décrite du Jurassique Moyen de Mongolie intérieure, Chine. Il peut être différencié de tous les genres connus d'Eomeropidae par la combinaison des caractères suivants : deux rangées de cellules formées par des veines transversales entre la marge costale et le ScP ; RP + MA avec cinq branches ; un MP avec cinq branches ; et trois veines anales. La présence de cette nouvelle espèce et de *Tsuchingothauma shibi* Ren & Shih, 2005 de la même famille dans cette localité suggère une diversification précoce des Eomeropidae morphologiquement proches des blattes pendant le Jurassique Moyen.

## MOTS CLÉS

Insecta,  
Mecoptera,  
Eomeropidae,  
Jurassique Moyen,  
Chine,  
genre nouveau,  
espèce nouvelle.

## INTRODUCTION

Mecoptera has a rather diverse fossil record. Up to now, 39 families, 207 genera with 703 species of fossil Mecoptera have been described, based on data from the EDNA site (<http://edna.palass-hosting.org/help.php>). Eomeropidae Cockerell, 1909 (synonym Notiothaumatidae Esben-Petersen, 1921) is a small family of Mecoptera represented by only one extant species, *Notiothauma reedi* M'Lachlan, 1877. This living species, rare, primitive, and often regarded as a "living fossil", has been found only in the western slopes of the Andes of Southern Chile (Remington 1968; Peña 1968). This remarkable and unique insect has flat shaped body and incumbent wings. *Notiothauma reedi* is active during humid nights in *Nothofagus* forests and lays its eggs on ferns in captivity (Peña 1968).

Five fossil genera with eight species have been described hitherto, with ages ranging from the Middle Jurassic to the Late Eocene (Cockerell 1909; Ponomarenko & Rasnitsyn 1974; Willmann 1978, 1987; Carpenter 1992; Novkshonov 1998; Ren & Shih 2005; Archibald *et al.* 2005). Occurrences of these fossil eomeropids indicate that they were more diverse and widespread in the geological past than extant ones. The general external morphology of this family has not changed much from the Mesozoic.

Recently we collected two fossil eomeropids from the lacustrine sedimentary strata of the Jiulongshan Formation in Daohugou Village, Ningcheng County, Inner Mongolia, northeastern China. The

age of the Jiulongshan Formation is considered as the Middle Jurassic (Ren *et al.* 1995, 2002, 2009; Tan & Ren 2002; Chen *et al.* 2004; Gao & Ren 2006; Tan *et al.* 2007).

Despite its Middle Jurassic age, the new Chinese eomeropids show extraordinary morphological similarity to their living relatives found in Chile (Crampton 1930; Mickoleit 1971). This similarity underscores the stasis of anatomical evolution. Indeed, extant eomeropids can be regarded as "living fossils" whose structures have remained little changed for over 165 million years. Furthermore, the new materials from China reveal that the early diversification of eomeropids with cockroach-like body or cockroach-type wings (Crampton 1931; Shields 1988; Whiting 2002) was well underway by the Middle Jurassic.

## MATERIAL AND METHODS

This study is based on two specimens housed in the fossil insect collection of the Key Lab of Insect Evolution & Environmental Changes, College of Life Sciences, Capital Normal University, Beijing, China (CNU, Dong Ren, Curator). The specimens were examined using a Leica MZ12.5 microscope, illustrated with the aid of a camera lucida. The body terminology used here is that of Mickoleit (1971, 1975) and the wing venation nomenclature of fossil and extant Mecoptera follows those of Kukalová-Peck (1991) and Kukalová-Peck & Lawrence (2004).

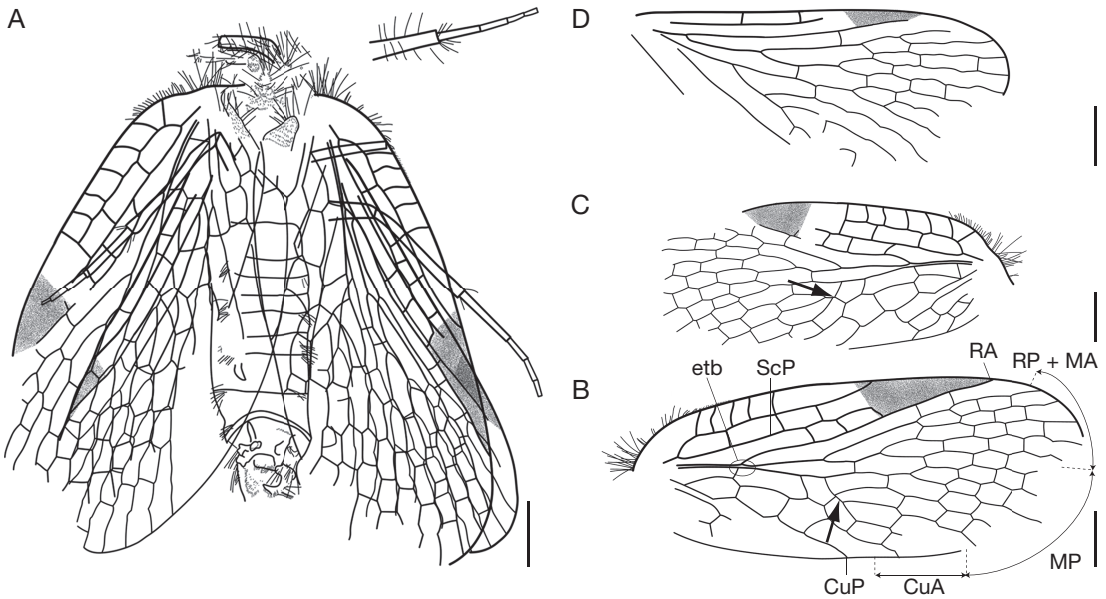


FIG. 1. — *Jurathauma simplex* n. gen., n. sp., holotype (CNU-MEC-NN2009001): **A**, body with wings; **B**, right forewing; **C**, left forewing; **D**, right hind wing. Arrows indicate venational variation. Abbreviations: see Material and methods. Scale bars: 2 mm.

#### ABBREVIATIONS

etb	Eomeropidae triadic branching;
CuA	anterior cubitus;
CuP	posterior cubitus;
MA	anterior media;
MP	posterior media;
RA	anterior radius;
RP	posterior radius;
ScP	posterior subcosta.

DIAGNOSIS. — Simplified venation compared to other genera of the family: costal area traversed by one main veinlet and forming two rows of cells; RP + MA with five branches; MP with five branches; CuA double and CuP simple; three anal veins.

#### *Jurathauma simplex* n. gen., n. sp. (Figs 1; 2A, B, D; 3)

TYPE MATERIAL. — Holotype (CNU-MEC-NN2009001) and paratype (CNU-MEC-NN2009002).

TYPE LOCALITY. — **China**. Daohugou Village, Shantou Township, Ningcheng County, Inner Mongolia; Jiulongshan Formation.

ETYMOLOGY. — The specific name is derived from the Latin *simplex* (meaning “simple”) referring to its simple venation.

MATERIAL EXAMINED FOR COMPARISON. — Two new specimens described herein: *Tsuchingothauma shihi* Ren & Shih, 2005 (CNU-M-NN200401 and CNU-M-NN200402) from the Middle Jurassic of Jiulongshan Formation, Daohugou locality, and *Typhothauma yixianensis* Ren & Shih, 2005 (CNU-M-LB200401) from the Late Jurassic to Early Cretaceous of Yixian Formation, Chaomidian locality.

#### SYSTEMATICS

Class INSECTA Linnaeus, 1758  
Order MECOPTERA Packard, 1886  
Family EOMEROPIDAE Cockerell, 1909

Genus *Jurathauma* n. gen.

*Notiothauma* – M'Lachlan 1877: 427-430 (part).

TYPE SPECIES. — *Jurathauma simplex* n. gen., n. sp.

ETYMOLOGY. — The generic name is a combination of the word Jurassic and *thauma*, a Greek word, meaning a wonderful thing or a marvel, from the recent genus of Eomeropidae *Notiothauma* M'Lachlan, 1877. Gender feminine.

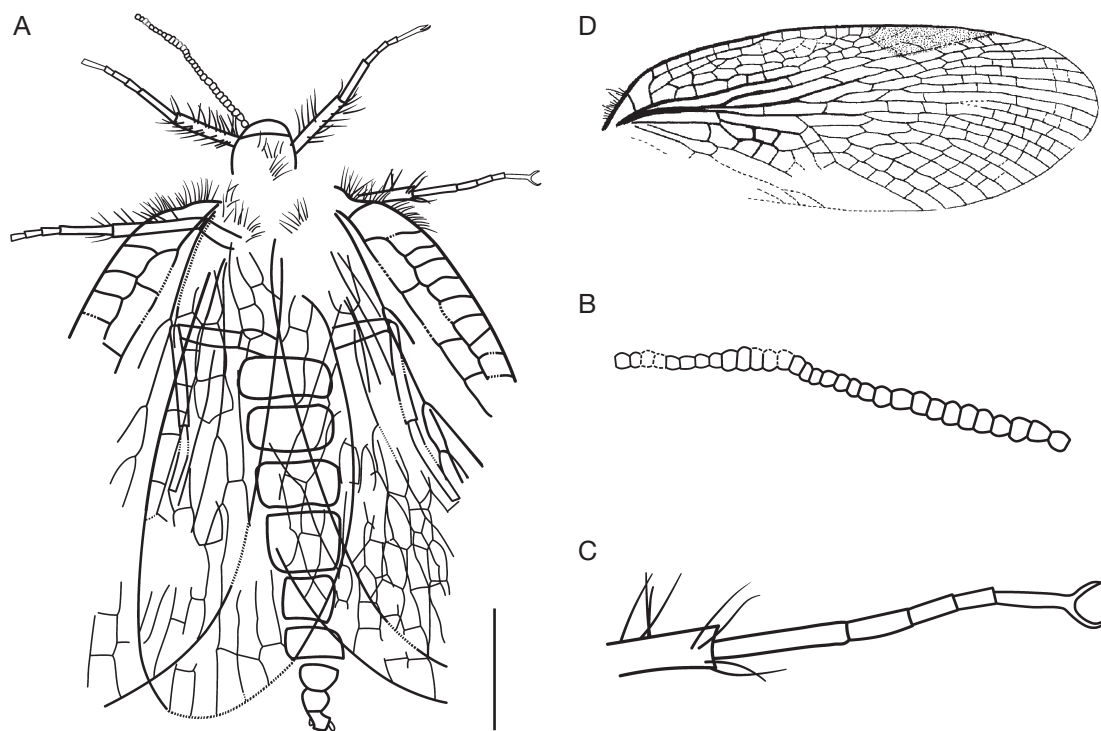


FIG. 2. — *Jurathauma simplex* n. gen., n. sp., ♀ paratype (CNU-MEC-NN2009002): **A**, body with wings; **B**, left antenna; **C**, right middle leg; **D**, *Tsuchingothauma shihi* Ren & Shih, 2005 (CNU-M-NN200401), right forewing. Scale bars: A, 4 mm; B, 5 mm; C, 2 mm; D, 1 mm.

**DISTRIBUTION.** — Daohugou Village, Shantou Township, Ningcheng County, Inner Mongolia, China; Jiulongshan Formation.

#### DESCRIPTION

Based mainly on the holotype, with supplemental information from the paratype.

#### *Holotype*

A complete male specimen preserved in dorsal view; wings almost symmetrically arranged, with a pair on each side slightly overlapped; body length (excluding antennae) 15 mm; head and antennae not preserved (Figs 1A; 3A).

#### *Paratype*

A complete female specimen preserved in dorsal view; forewing and hind wing overlapped and partially preserved; body length (excluding antennae) 20 mm; hypognathous head partially preserved;

antennae incomplete with many antennomeres, filiform (Figs 2A, B; 3B, C).

Forewing length 16.1 mm, width 6.2 mm; apical margin of the forewing somewhat sharp-pointed (Fig. 1A-C). At very base of the costal margin, a cluster of less than 20 heavy setae (up to 1.35 mm long) for an area of about 1.4 mm wide; distally, an area about 2 mm wide with shorter (up to 0.3 mm long) setae (measurements based on left forewing); costal margin continuing pubescent; costal area narrow basally to humeral vein, distally broadened, traversed by two rows of cells and a strong and longitudinal secondary vein parallel to the costal margin with four (in right wing) and seven (in left wing) crossveins; three crossveins from ScP to the secondary longitudinal vein; ScP distally vanishing and not reaching anterior wing margin; pterostigma present, apical part of RA vanishing or obscure in this area; RA, RP + MA and

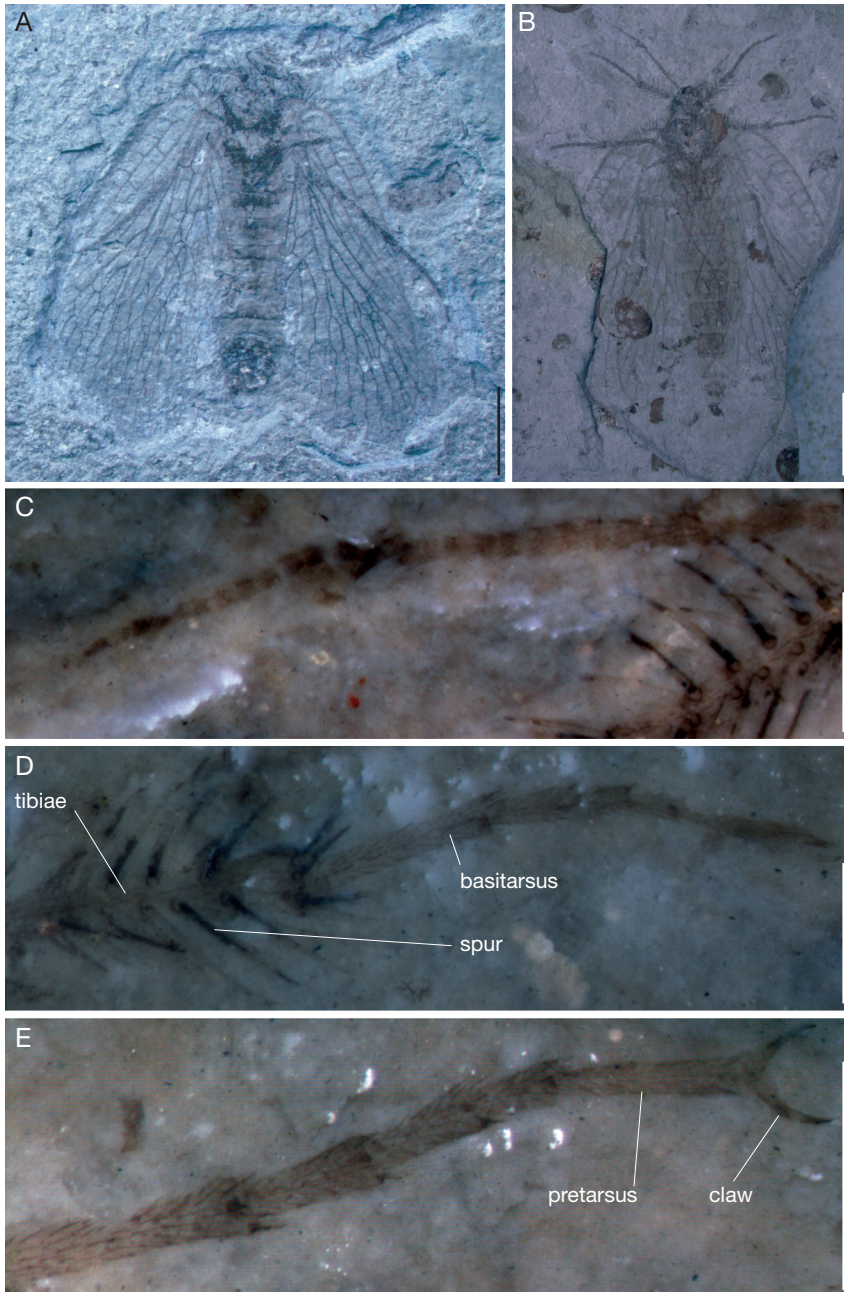


FIG. 3. — *Jurathauma simplex* n. gen., n. sp.: **A**, holotype (CNU-MEC-NN2009001); **B**, paratype (CNU-MEC-NN2009002); **C**, left antenna of paratype; **D**, right fore leg of paratype; **E**, right middle leg of paratype. Scale bars: A, 4 mm; B, 5 mm; C, D, E, 1 mm.

MP forming the “Eomeropidae triadic branching” (Fig. 1B); RA diverging anteriorly from RP + MA, as in *Tsuchingothauma shihi* Ren & Shih, 2005 (Fig. 2D); RP + MA continuing straight with R; RA simple, weakly zigzagged; RP + MA with two main branches, anterior one with three terminal branches, posterior one with two terminal branches; three setae on Cu just before its bifurcation, a longer seta in the beginning of CuA; MP bifurcated into two main branches, MP1 + 2 continuing the same direction, MP3 + 4 diverging posteriorly at a nearly straight angle; MP1 single, MP2 double, MP3 single, MP3 + 4 joined with CuA1 + 2 by a short distance in left wing, MP3 + 4 only touching CuA1 + 2 in right wing (see arrows in Figure 1B, C); CuA1 + 2 free (?); CuA3 + 4 strongly and curvy zigzagged by crossveins, bent sharply posteriad approximately at branching of MP, only with one terminal branch; CuP single, zigzagged by crossveins; three simple anal veins. All veins thickened in basal parts, then narrower; no coloration detected. Entire forewing with many crossveins and long hexagonal cells.

Hind wing length 12.5 mm, width 5.0 mm; veins partly preserved (Fig. 1A, D). Costal area with few (at least three) crossveins; pterostigma present; apical part of RA vanished or obscure in this area; RP + MA arising from RA at acute angle; RA continuing stem of R; RA simple, posteriorly limiting pterostigma; RP + MA divided in two main branches, anterior one with three terminal branches, posterior one with two terminal branches; MP1 single, MP2 double, MP3 single, MP3 + 4 only touching CuA1 + 2 in right wing (as in recent *Notiothauma*); CuA incompletely preserved. All veins thickened in basal parts, then narrower; no trace of coloration. Compared to the forewing, the hind wing smaller in size and with fewer crossveins and long hexagonal cells.

Prothorax poorly preserved. Meso- and metanotum distinctly larger than pronotum. There is a certain amount of crinite on the thorax (Figs 1A; 3A, B).

Legs densely clothed with transverse rows of short setae. Femora stout. Tibiae somewhat longer and slender, with many conspicuous spines and 2 terminal spurs. Tarsi 5-segmented, basitarsus

longest. Pretarsus with 2 lateral claws (Figs 2C; 3D, E).

Abdomen elongate, tapering apically, with 9 visible segments. Segments 8 and 9 abruptly more slender than 1-6. Lateral tergal horns in segment 7. Gonostylus partially preserved (Fig 1A).

## DISCUSSION

The new genus and species is attributed to the Eomeropidae because of several characters and features: the presence of parallel and secondary veins in costal area, “Eomeropidae triadic branching”, presence and distribution of long setae on wings, and the general flat aspect of the insect body with strong and particularly disposed spines and hypognathous head.

The new genus differs from all other genera of the family in its simpler venation, with fewer longitudinal veins and crossveins, resulting in fewer cells. *Jurathauma* n. gen. (Fig. 1B) differs from *Tsuchingothauma* Ren & Shih, 2005 (Fig. 2D) by the presence of two rows of cells in the costal area of forewing vs. five rows in *Tsuchingothauma*; Sc simple; both RP + MA and MP with fewer branches (both RP + MA and MP with five vs. both RP + MA and MP with nine in *Tsuchingothauma*); CuA double, only with one terminal branch, whereas in *Tsuchingothauma*, there are at least 2 or 3 terminal branches; wings with fewer crossveins and cells. The new genus can also be distinguished from *Typhothauma* Ren & Shih, 2005 by the following characteristics: 1) costal area traversed by one main veinlet and forming two rows of cells; 2) CuA double, whereas in *Typhothauma* there are three terminal branches; 3) anal area with only three veins.

There is a difference between the right and left forewings of the holotype in the medial and cubital veins: MP3 + 4 joined with CuA1 + 2 by a short distance in left wing, MP3 + 4 only touching CuA1 + 2 in right wing (see arrows in Fig. 1B, C). Carpenter (1992) also reported differences present in eomeropids. These differences imply possible variations in the venation at individual or species level in Eomeropidae. Such an important variability

could induce to wrong interpretations in taxonomy studies of isolated wings.

The holotype is the first recognized male in the fossil record of Eomeropidae so far. The holotype has a body length of 15 mm, the paratype, a female, a body length of 20 mm, and a female of *T. shihi* has a body length of 22 mm (body length is measured excluding antennae). Based on this limited number of fossil specimens, it seems that the female eomeropids are larger than the males during the Middle Jurassic. Besides potential size difference between females and males, there are many other factors impacting body size, for example, individual diet, nutrition, metabolism, growth, mutations, etc.

The setae and spines of the new species, such as those occurring at the base of the wing, legs, thorax and abdomen, have similar distribution as those of *N. reedi* (Crampton 1930). The preserved fossil specimens of the new species and *Tsuchingothauma shihi* suggest that they held wings in roof-like position when in repose, which is consistent with *N. reedi* holding its wings in the incumbent position in repose (Crampton 1930). *Notiothauma reedi* was reported to have an extremely depressed and flattened form when in a state of repose, indicating that it may hide under loose bark of trees or stones (M'Lachlan 1877). It is likely, by inference, that the fossil eomeropids might have had the same behavior.

### Acknowledgements

We thank Bruce Archibald, André Nel and Annemarie Ohler for their review and their valuable and helpful comments. The research was supported by the National Natural Science Foundation of China (no. 40872022, 31071964), the Beijing Natural Science Foundation (No.5082002) and the Scientific Research Key Program and PHR Project of Beijing Municipal Commission of Education. JFP thanks the National Research Council of Argentina (CONICET) for funds: PIP 6393, PIP 0377 and BEJI. We also thank the USA National Science Foundation (NSF) grants DEB-0345750 and DEB-0919071 for technical support.

### REFERENCES

- ARCHIBALD S. B., RASNITSYN A. P. & AKHMETIEV M. A. 2005. — The ecology and distribution of Cenozoic Eomeropidae (Mecoptera), and a new species of *Eomerope* Cockerell from the Early Eocene McAbee locality, British Columbia, Canada. *Annals of the Entomological Society of America* 98: 503-514.
- CARPENTER F. M. 1992. — *Treatise on Invertebrate Palaeontology*, Part R, *Arthropoda* 4 (3). Geological Society of America and University of Kansas Press, Lawrence: 380-395.
- CHEN W., JI Q., LIU D. Y., ZHANG Y., SONG B. & LIU X. Y. 2004. — Isotope geochronology of the fossil-bearing beds in the Daohugou Area, Ningcheng, Inner Mongolia. *Geological Bulletin of China* 23: 1165-1169.
- COCKERELL T. D. A. 1909. — Description of Tertiary insects, VI. *American Journal of Science* 27: 381-387.
- CRAMPTON G. C. 1930. — The wings of the remarkable archaic mecopteran *Notiothauma reedi* M'Lachlan with remarks on their protoblattoid affinities. *Psyche* 37 (1): 83-103.
- CRAMPTON G. C. 1931. — The genitalia and terminal structures of the male of the archaic Mecopteran, *Notiothauma reedi*, compared with related holometabola from the standpoint of phylogeny. *Psyche* 38 (1): 1-21.
- GAO K. Q. & REN D. 2006. — Radiometric dating of ignimbrite from Inner Mongolia provides no indication of a Post-Middle Jurassic Age for the Daohugou Beds. *Acta Geologica Sinica* 80: 42-45.
- KUKALOVÁ-PECK J. 1991. — *The Insects of Australia*. 2<sup>nd</sup> Edition. Melbourne University Press, Carlton, 141-179.
- KUKALOVÁ-PECK J. & LAWRENCE J. F. 2004. — Relationships among coleopteran suborders and major endoneopteran lineages: evidence from hind wing characters. *European Journal of Entomology* 101: 95-144.
- MICKOLEIT G. 1971. — Das Exoskelet von *Notiothauma reedi* M'Lachlan, ein Beitrag zur Morphologie und Phylogenie der Mecoptera (Insecta). *Zeitschrift für Morphologie der Tiere* 69: 318-362.
- MICKOLEIT G. 1975. — Die Genital und Postgenitalsegmente der Mecoptera-Weibchen (Insecta, Holometabola). I. Das Exoskelet. *Zeitschrift für Morphologie der Tiere* 80: 97-135.
- M'LACHLAN R. 1877. — On *Notiothauma reedi*, a remarkable new genus and species of Neuroptera from Chile, pertaining to the family Panorpidae. *Transactions of the Entomological Society of London*, Part IV: 427-430.
- NOVOKSHONOV V. G. 1998. — Some problems of scorpionfly (Mecoptera) evolution. *Entomological*

- Review* 78 (3): 378-390.
- PENA G. L. E. 1968. — Natural history notes on *Notiothauma*. *Discovery* 4 (1): 42-44.
- PONOMARENKO A. G. & RASNITSYN A. P. 1974. — New Mesozoic and Cenozoic Protomecoptera. *Paleontological Journal* 8: 493-507.
- REMINGTON C. L. 1968. — A rare and primitive winged Insect from Chile. *Discovery* 4 (1): 37-41.
- REN D., LU L. W., GUO Z. G. & JI S. A. 1995. — *Fauna and Stratigraphy of Jurassic-Cretaceous in Beijing and the Adjacent Areas*. Seismic Publishing House, Beijing. 222 p. (in Chinese, English abstract).
- REN D., GAO K. Q., GUO Y. G., JI S. A., TAN J. J. & SONG Z. 2002. — Stratigraphic division of the Jurassic in the Daohugou Area, Ningcheng, Inner Mongolia. *Geological Bulletin of China* 21: 584-591.
- REN D. & SHIH C. K. 2005. — The first discovery of fossil Eomeropids from China (Insecta, Mecoptera). *Acta Zootaxonomica Sinica* 30 (2): 275-280.
- REN D., LABANDEIRA C. C., SANTIAGO-BLAY J. A., RASNITSYN A., SHIH C. K., BASHKUEV A., LOGAN M. A. V., HOTTON C. L. & DILCHER. D. 2009. — A probable pollination mode before angiosperms: Eurasian, long-proboscid scorpionflies. *Science* 326: 840-847.
- SHIELDS O. 1988. — Mesozoic history and neontology of Lepidoptera in relation to Tricoptera, Mecoptera, and angiosperms. *Paleontological Journal* 62 (2): 251-258.
- TAN J., HUANG D. Y. & REN D. 2007. — First record of fossil *Mesocupes* from the Middle Jurassic of Inner Mongolia, China (Coleoptera: Archostemata). *Acta Geologica Sinica* 81 (5): 688-696.
- TAN J. & REN D. 2002. — Palaeoecology of insect community from Middle Jurassic Jiulongshan Formation in Ningcheng County, Inner Mongolia, China. *Acta Zootaxonomica Sinica* 27: 428-434.
- WHITING M. F. 2002. — Mecoptera is paraphyletic: multiple genes and phylogeny of Mecoptera and Siphonaptera. *Zoologica Scripta* 31 (1): 93-104.
- WILLMANN R. 1978. — Mecoptera (Insecta, Holometabola). *Fossilium Catalogus (Animalia)* 124: 1-139.
- WILLMANN R. 1987. — The phylogenetic system of the Mecoptera. *Systematic Entomology* 12: 519-524.

*Submitted on 27 November 2010;  
accepted on 4 April 2011.*