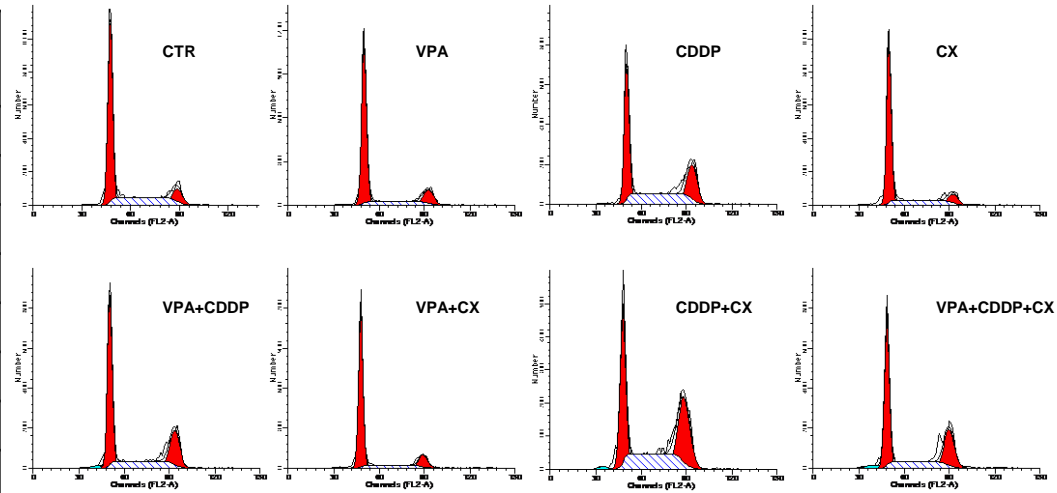
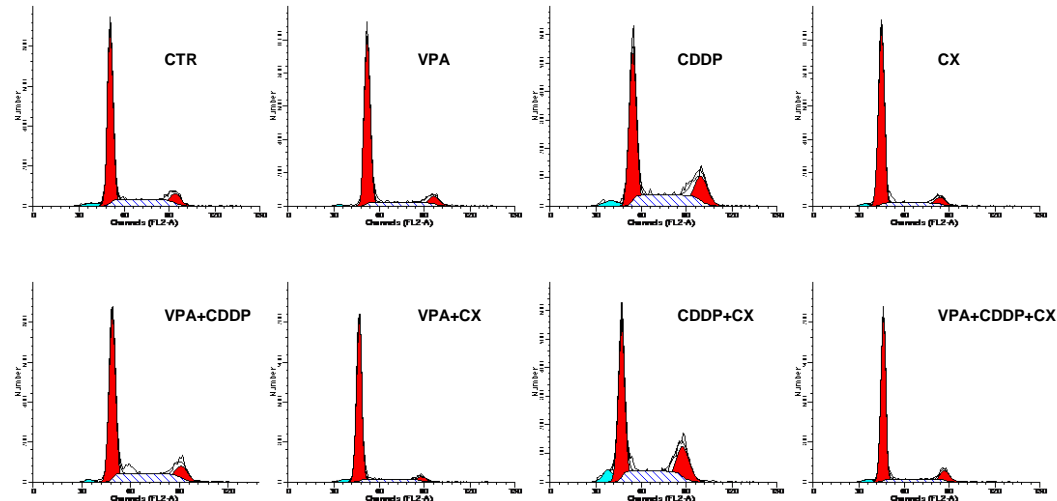


# Cal27

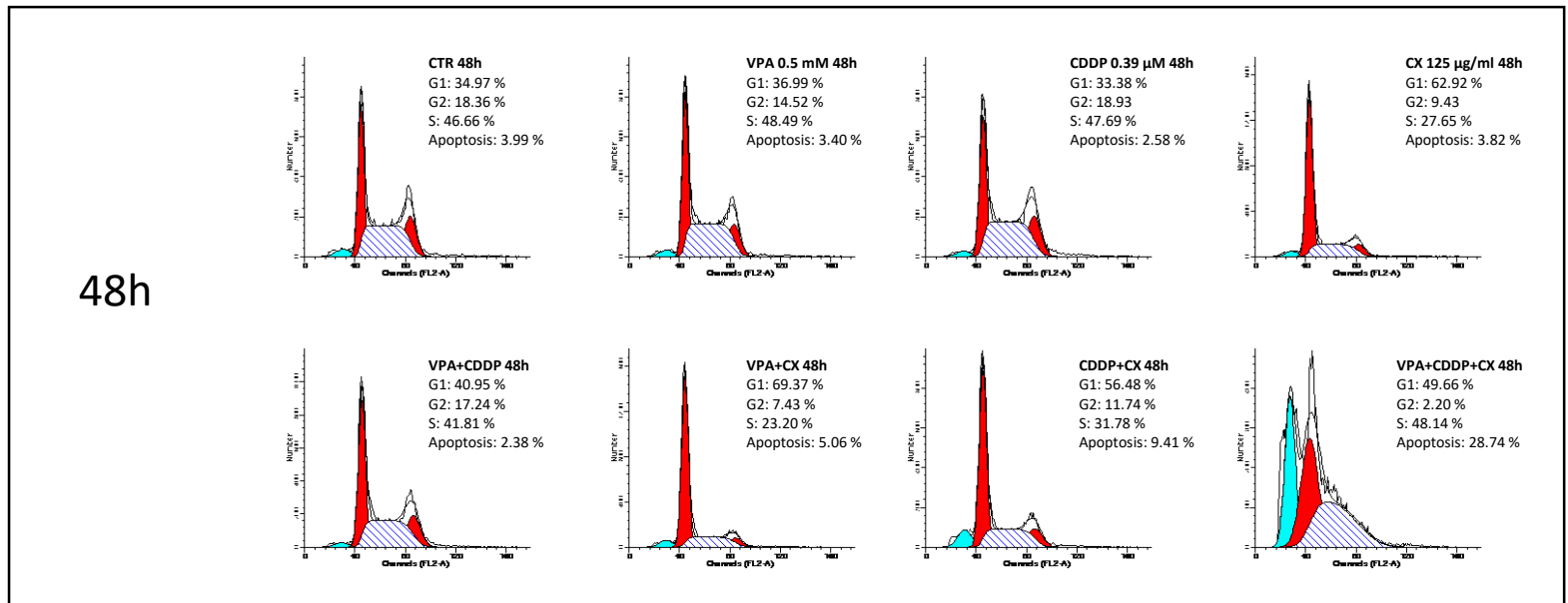
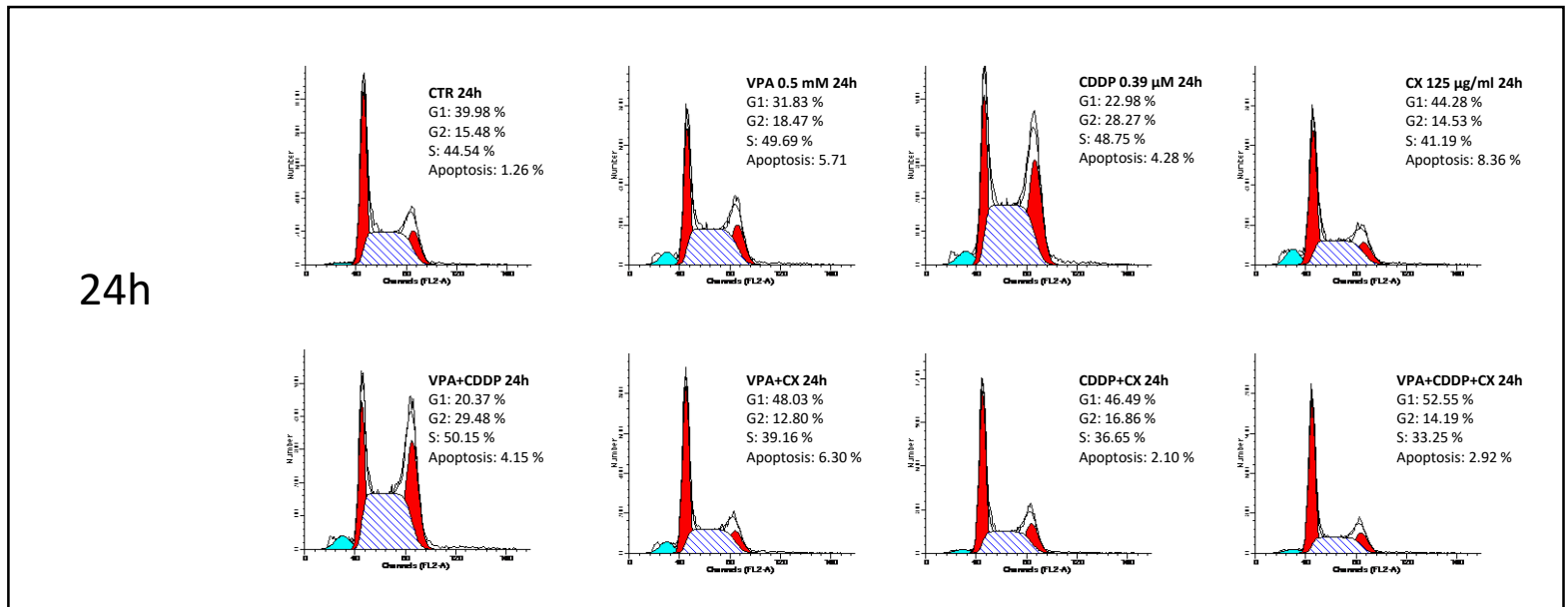
| 24h           | % of phase G1 ± DS | % of phase S ± DS | % of phase G2 ± DS | % of Apoptosis ± DS |
|---------------|--------------------|-------------------|--------------------|---------------------|
| CTR           | 59.33 ± 4.87       | 28.63 ± 2.71      | 12.03 ± 2.16       | 0.065 ± 0.064       |
| VPA, 0,6 mM   | 65.27 ± 8.28       | 21.37 ± 7.79      | 13.35 ± 0.49       | 0.38 ± 0.24         |
| CDDP, 1 µM    | 40.93 ± 3.55       | 34.13 ± 2.43      | 24.93 ± 1.12       | 0.35 ± 0.22         |
| CX, 250 µg/ml | 64.93 ± 8.12       | 22.79 ± 3.59      | 12.28 ± 4.52       | 1.68 ± 2.00         |
| VPA/CDDP      | 49.1 ± 6.55        | 25.09 ± 2.89      | 25.81 ± 3.65       | 1.04 ± 0.66         |
| VPA/CX        | 71.70 ± 8.50       | 15.24 ± 7.07      | 13.05 ± 1.43       | 2.18 ± 2.23         |
| CDDP/CX       | 38.66 ± 1.80       | 30.33 ± 2.06      | 31.01 ± 3.87       | 0.93 ± 0.21         |
| VPA/CDDP/CX   | 50.85 ± 4.18       | 20.83 ± 1.72      | 28.31 ± 2.46       | 2.49 ± 0.56         |



| 48h           | % of phase G1 ± DS | % of phase S ± DS | % of phase G2 ± DS | % of Apoptosis ± DS |
|---------------|--------------------|-------------------|--------------------|---------------------|
| CTR           | 67.83 ± 1.50       | 21.99 ± 0.60      | 10.17 ± 0.90       | 3.18 ± 0.46         |
| VPA, 0,6 mM   | 74.54 ± 0.79       | 16.47 ± 0.16      | 8.98 ± 0.63        | 0.42 ± 0.44         |
| CDDP, 1 µM    | 52.70 ± 1.79       | 29.07 ± 0.18      | 18.22 ± 1.97       | 2.96 ± 0.99         |
| CX, 250 µg/ml | 79.28 ± 1.38       | 12.95 ± 1.01      | 7.76 ± 0.37        | 0.99 ± 0.53         |
| VPA/CDDP      | 62.06 ± 0.89       | 23.38 ± 3.16      | 14.55 ± 4.05       | 1.18 ± 0.26         |
| VPA/CX        | 84.03 ± 0.51       | 9.59 ± 1.43       | 6.37 ± 1.94        | 2.13 ± 0            |
| CDDP/CX       | 54.98 ± 5.99       | 24.21 ± 3.07      | 20.8 ± 2.91        | 5.67 ± 0.34         |
| VPA/CDDP/CX   | 76.13 ± 0.49       | 13.17 ± 1.07      | 10.69 ± 0.57       | 2.78 ± 0.59         |



# FaDu



Cal27 and FaDu cells were exposed to drugs as indicated. Cytofluorimetric analysis of cell cycle were performed after 24-h or 48 h, upon propidium iodide (PI) labelling.