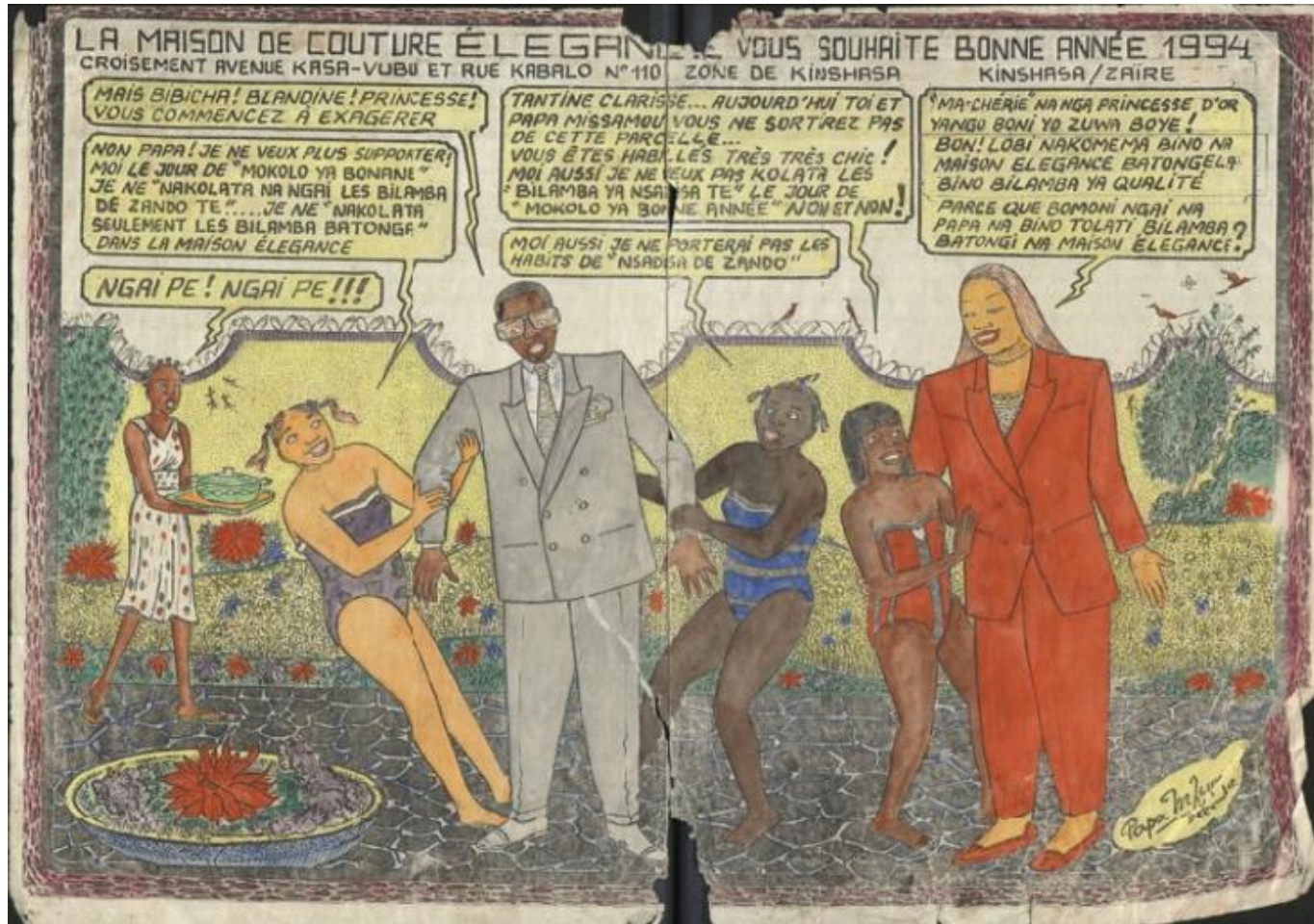


MADOC - Transcription and annotation platform



International
Image
Interoperability
Framework

& CONGO
COMICS

Crime scenes: interwar interiors in Belgium



CRIME SCENE: INTERBELLUMINTERIEURS IN BELGIË

Davy Verbeke Uittloggen

Zoeken

HOME CASES ▾ FOTOGRAFIE ▾ INTERIEUR ▾ ZOEKEN ▾ COLLECTIE EXPO VDH ▾

CASES > Oost-Vlaanderen

Cases Oost-Vlaanderen

In het Gentse Rijksarchief vinden we de gerechtelijke dossiers van 19 Oost-Vlaamse moordzaken uit de jaren 1930 terug. De unieke foto's en plattegronden maken het mogelijk om diverse interieurs uit het interbellum nauwkeurig te bestuderen.

Klik op de naam van een casus voor een analyse van het interieur.



Zaak 1: C. (1932, Gent)



Zaak 2: P. (1932, Asper)



Zaak 3: M. (1932, Destelbergen)



Zaak 4: d.B. (1933, Zelzate)



Zaak 5: S. (1933, Ledeberg)



Zaak 6: F.M. (1933, Temse)



Zaak 7: I. (1934, Gent)



Zaak 8: B. (1934, Ertvelde)

Oost-Vlaanderen

- Zaak 1 (1932, Gent)
- Zaak 2 (1932, Asper)
- Zaak 3 (1932, Destelbergen)
- Zaak 4 (1933, Zelzate)
- Zaak 5 (1933, Ledeberg)
- Zaak 6 (1933, Temse)
- Zaak 7 (1934, Gent)
- Zaak 8 (1934, Ertvelde)
- Zaak 9 (1935, Gentbrugge)
- Zaak 10 (1933, Nieuwkerken)
- Zaak 11 (1935, Gent)
- Zaak 12 (1936, Gentbrugge)
- Zaak 13 (1936, Gent)
- Zaak 14 (1936, Scheldewindeke)
- Zaak 15 (1936, Sint-Gillis-Dendermonde)
- Zaak 16 (1937, Ledeberg)
- Zaak 17 (1937, Zelzate)
- Zaak 18 (1937, Ronse)
- Zaak 19 (1938, Gent)

MA student project

39 murder cases: court records

Omeka S

Collection

Exposition

Universal Viewer

Tag system

<https://www.omeka.ugent.be/interieurdesign/s/plaatsdelict>

Crime scenes: interwar interiors in Belgium

Digital storytelling with **Storiies** (CogApp)
IIF module



Image colorization with **DeOldify** (AI)



<https://www.omeka.ugent.be/interieurdesign/s/plaatsdelict>

Congo comics – Papa Mfumu'eto

- Papa Mfumu'eto (°1963, Congo DRC)
- Comic collection (1980s-2000s)
- > 300 comics (daily life and politics)
- Lingala and French

- Transcribe & translate
- Annotate
- Showcase
- Physical exhibition

- Student project
- *Lingala* learning



MADOC 2.0 – IIF transcription and annotation platform

Open Source

Import and (re)organize IIF manifests in collections



ENRICHMENT

Metadata, Transcriptions, Translations, Named entities,
Tags, External vocabularies

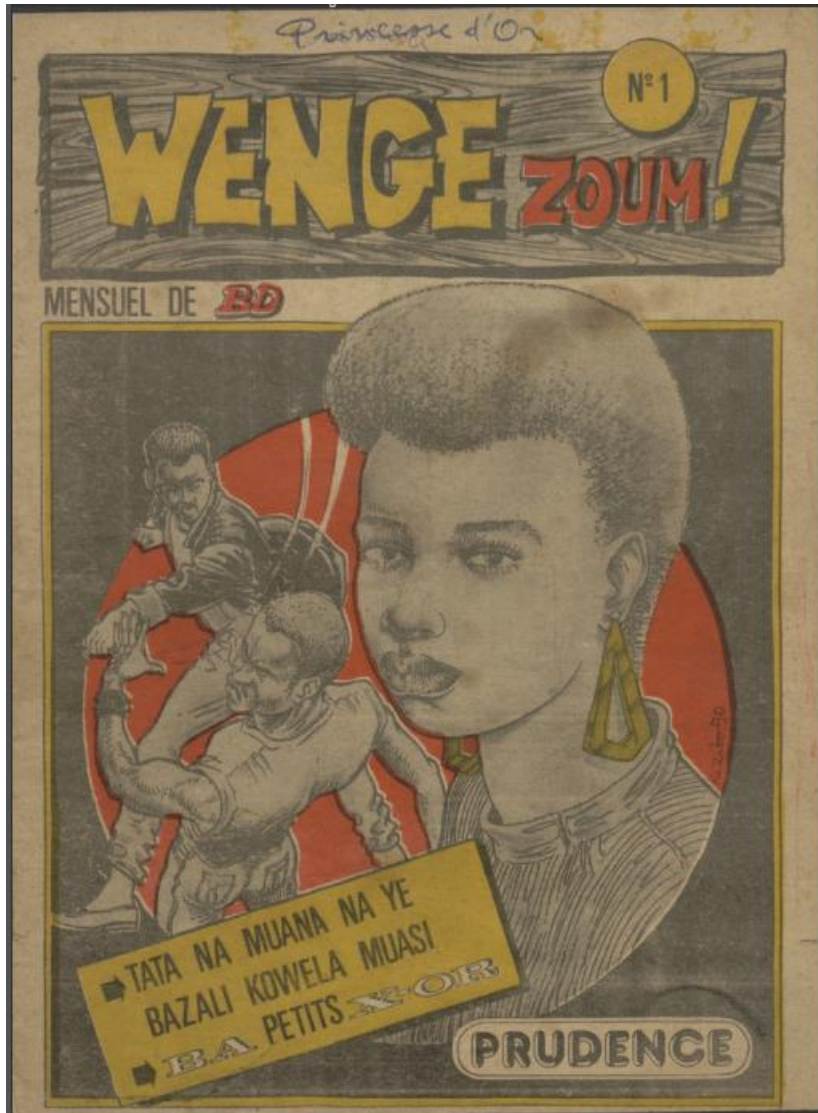


CROWDSOURCE

SHOWCASE



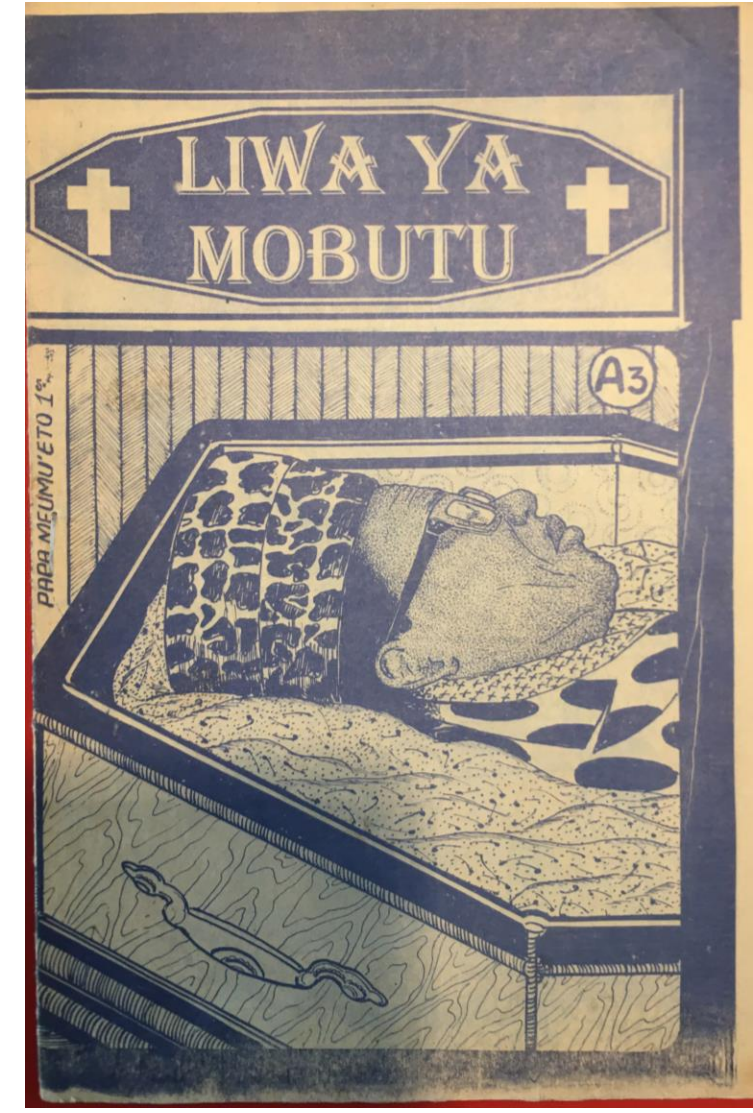
1. WORKFLOW: collection in IIF, shared metadata model



University of Florida



Pigozzi private collection



Ghent University

2. WORKFLOW: collections & projects (per comic)

Papa Mfumu'eto

Comic books

43

Not started

1

In progress

5

In review

5

Completed

Manifests



Example 1 - PaMfuExample 1
8 images



Zoo stemt men voor de liberalen
1 image



Example 2 PaMfuExample 2
1 image



Wunder der Vererbung
36 images

3. WORKFLOW: pre-segmentation of canvases (admin-teacher)

The interface is divided into three main sections:

- Left Panel:** Contains three search icons and a refresh icon.
- Central Canvas:** A large gray area where a red dashed box with a "Save" button is positioned at the top. Below it are four blue solid rectangular boxes of varying sizes, representing segmented areas.
- Right Panel:** Titled "Segment", it contains a gray instruction box: "Please position boxes over the areas you want users to annotate in this image". At the bottom right of this panel are "Cancel" and "Save" buttons.
- Bottom Navigation:** A horizontal bar with a left arrow, a sequence of numbered tabs (1-9), and a right arrow. Tab 4 is highlighted with a thumbnail image of a document page.

4. WORKFLOW: capture model & enrichment (students of Lingala)



Tag personen

Transcriber tekst

Vertaal tekst



naar Nederlands

naar Engels

5. WORKFLOW: review, correct, merge, approve (teacher-admin)

The screenshot displays the Madoc review interface. On the left, a sidebar lists three submissions: 00020 - FelixArchief_V92_056 (assigned to Frederic (admin)), 00020 - FelixArchief_V92_055c (assigned to Jan (admin)), and 00008 - FelixArchief_V92_026 (assigned to Christine test Account). The main area shows a review of "Davy (admin): submission 00008 - FelixArchief_V92_026" assigned to Christine test Account. A toolbar includes options: edit submission, reject submission, request changes (highlighted with a red box and a red arrow), start merge, and Approve submission. Below the toolbar is a large image of a handwritten document in Dutch. To the right of the image is a transcription progress bar labeled "Transcriptie (transcription)" with the number 41.

MADOC
as a

**LINGALA
LEARNING
DEVICE!**

6. WORKFLOW: dissemination – online and physical exhibition

1 Search results for **chéri cherin** [Clear search](#)

[Back to list](#)

Chéri Cherin

Home - +

PRINCESSE D'OR
LA PRINCESSE AFRICAINE
N°1 - JUILLET 1996 - PREMIÈRE ANNÉE - HEBDOMADAIRE DE BANDES DÉSSINÉES
MWAN'A NGELI-NGELI
BISENGO EBANDI NA NZETE YA FUFU
PRINCESSE D'OR
LA PRINCESSE AFRICAINE
PRINCESSE D'OR
HAÛTE COUTURE
ELEGANCE
DAMES HOMMES ENFANTS

One piece of advice for TEACHERS implementing IIF?



COLLABORATE WITH STUDENTS

on a shared project and

LET STUDENTS COLLABORATE