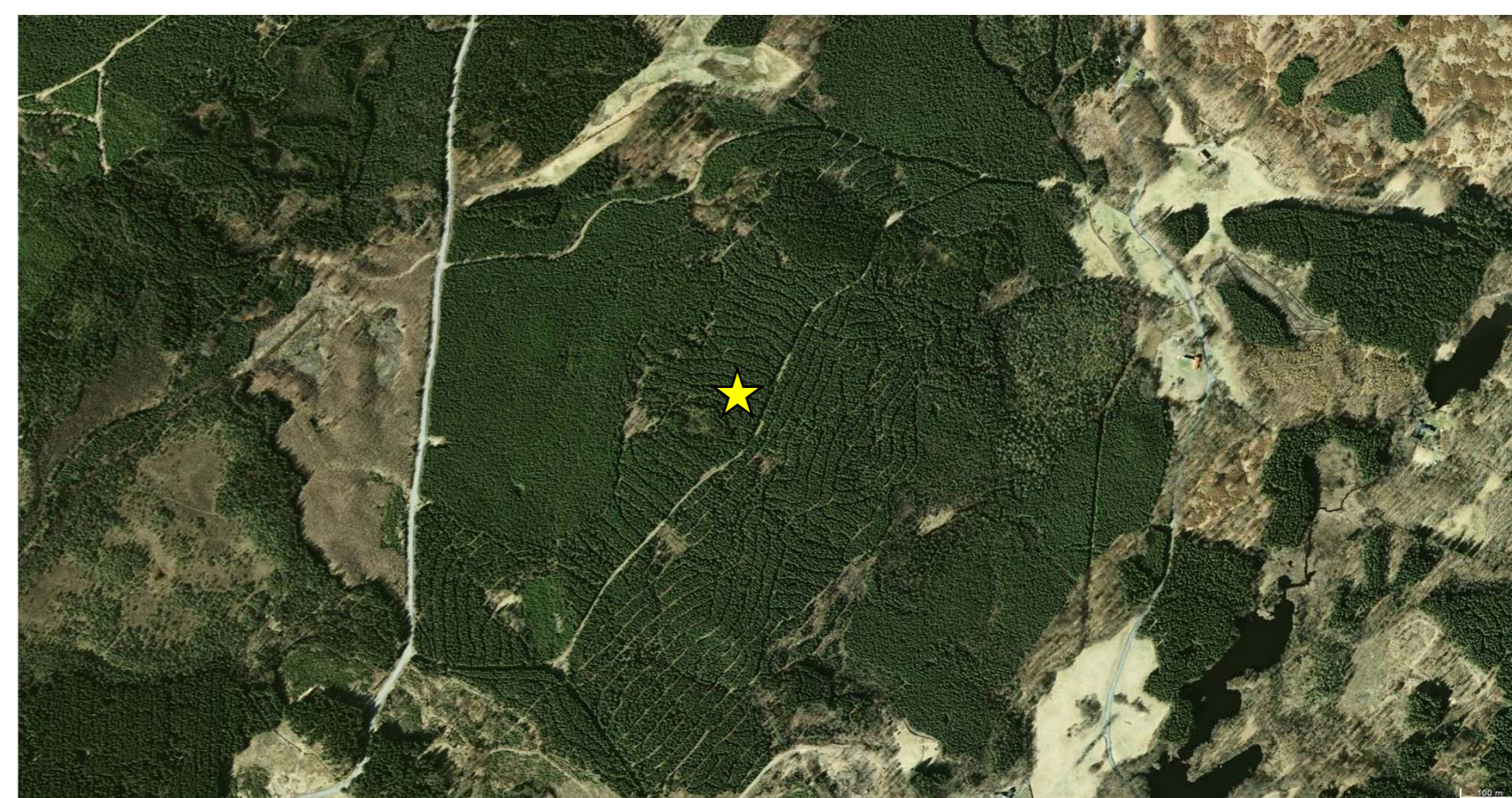
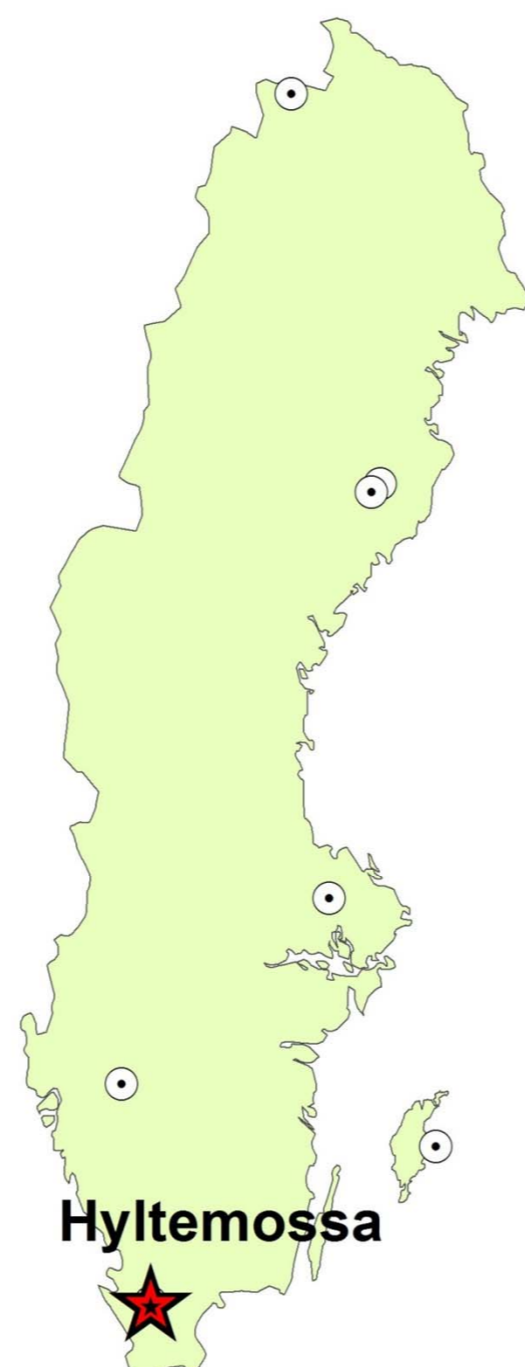


Hyltemossa temperate forest

Michal Heliasz & Tobias Biermann

Hyltemossa (56° 06' N, 13° 25' E, elevation 115 m.a.s.l.) is a combined ecosystem and atmospheric ICOS station, operated by Lund University. The ICOS activities are centered around a 150 m tall tower, located in a 30 years old managed spruce forest.

Hyltemossa, currently being in the starting phase, is a newly established site in southern Sweden. The tower was built in March 2014 and during the summer equipped with instruments belonging to ecosystem part of the station. The atmospheric part will be installed during the autumn.



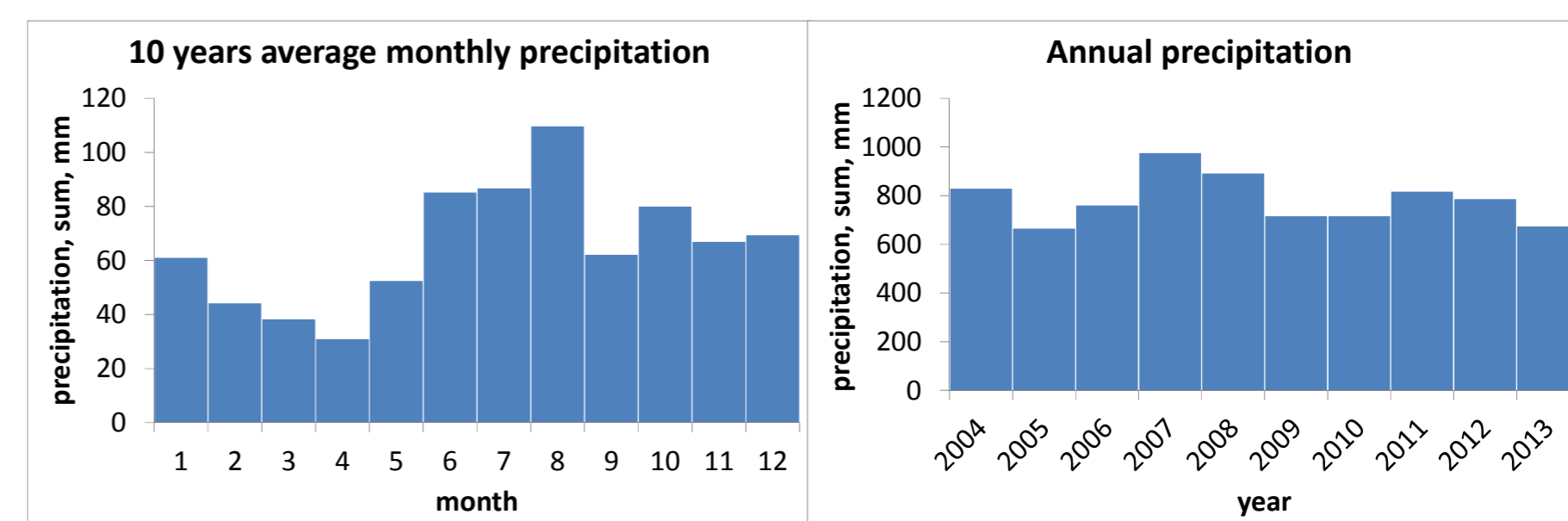
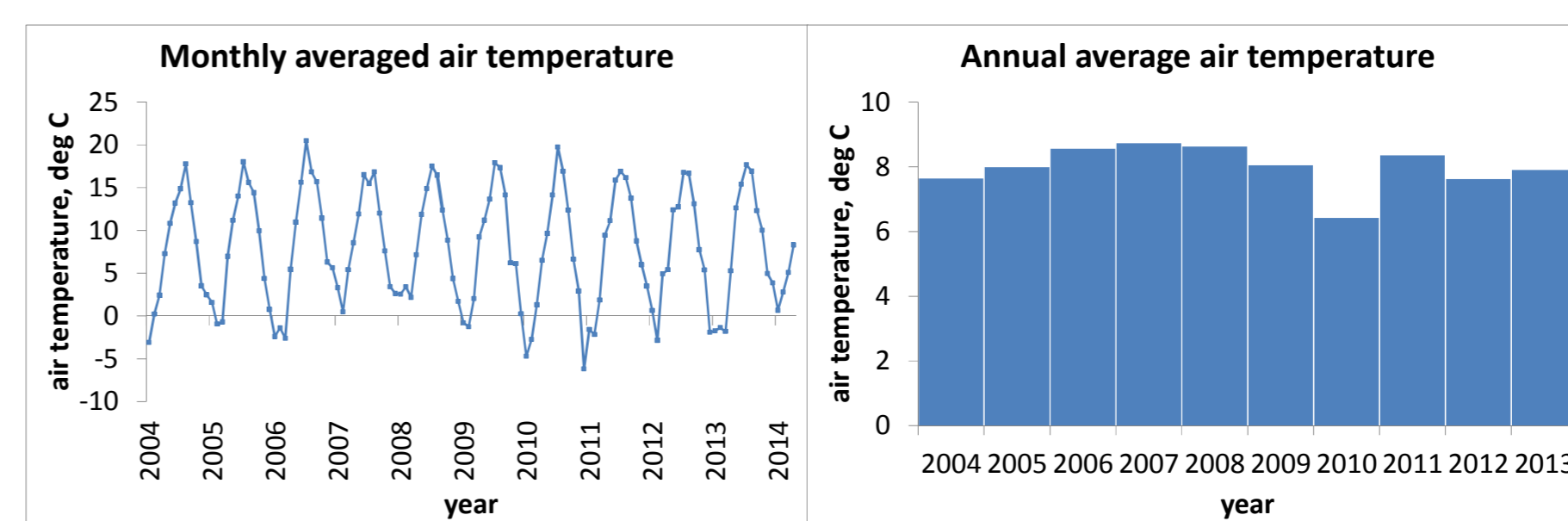
Hyltemossa forest, position of the tower marked by the yellow star.

The site is located in temperate, maritime climate with monthly average temperatures for January oscillating around 0 °C and 20 °C for July. Annual average temperature is around 8 °C. Spring months are the driest while summer months are the wettest with total annual precipitation of around 800 mm.



Building the Hyltemossa tower. The tower after being equipped and an inside view

The tower is surrounded by productive spruce forest estimated to grow 34 m during 100 years, with management turnover rate of about 50 years. The site experienced storm damage in 1981, was clear-cut in 1982 and replanted in 1983 with 3300 trees per hectare. The forest was cleaned in 1998 and 2005 and thinned in 2009 and 2013. At the present time the forest stand is 19 m tall and holds around 190 m³ per hectare (excluding branches, stumps and roots).



Air temperature and precipitation for last 10 years. Data from Swedish Meteorological and Hydrological Institute (SMHI)



View from the tower, including the flux system.