

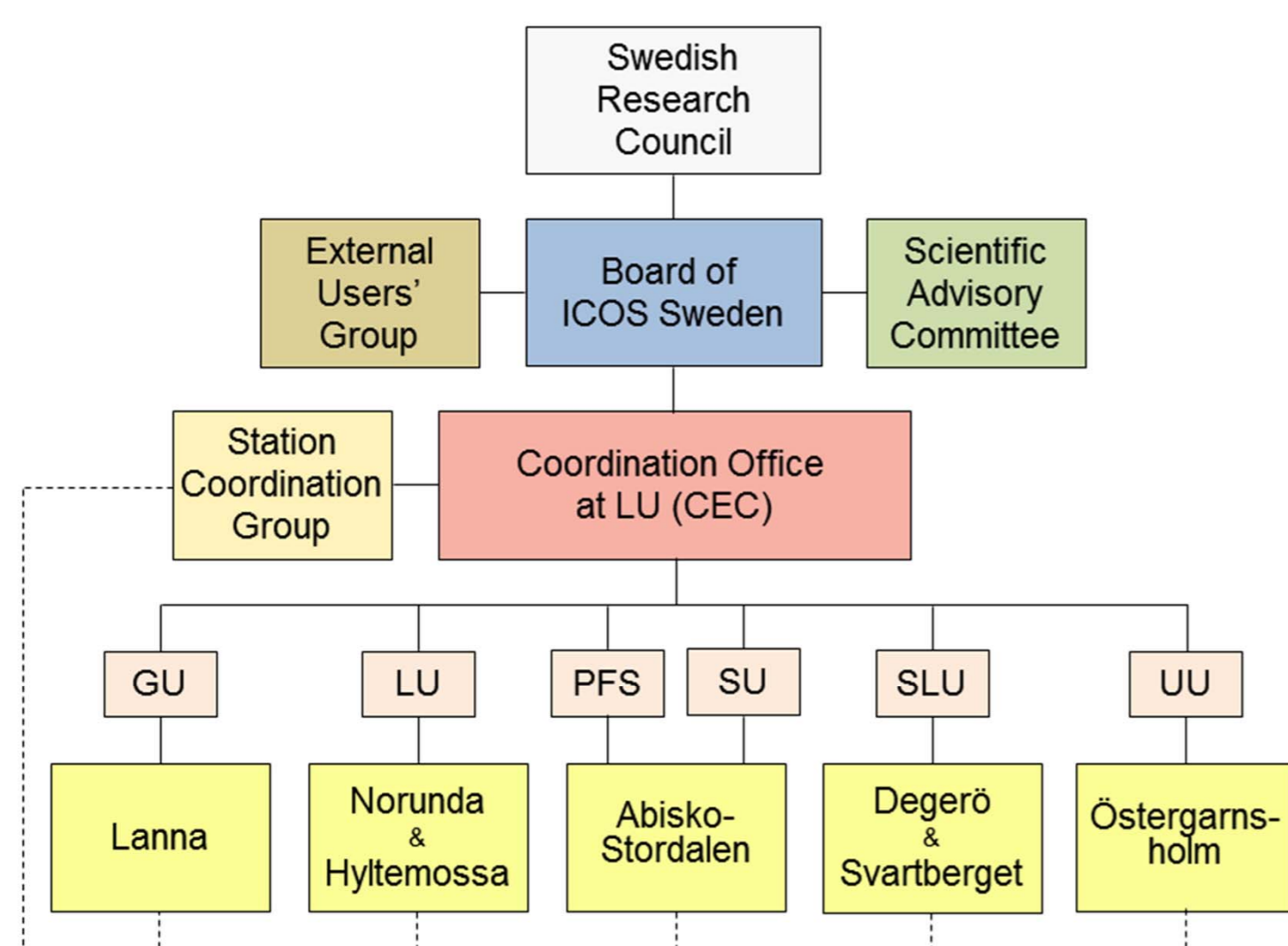
ICOS Sweden national network

- European partner & national science resource

ICOS Sweden operates a network consisting of 7 field stations representing major Swedish ecosystems (forests, wetlands, crop sites and marine) and climate conditions (subarctic to temperate). Three sites also host atmospheric observations. In addition to ICOS activities, the stations are open to all researchers wishing to perform complementary studies.

ICOS Sweden was launched in 2010. It is a consortium between 5 partner universities - Lund, Gothenburg, SLU - Agricultural sciences, Stockholm and Uppsala) and the Swedish polar research secretariat. Lund University is the host institution for Swedish ICOS, and this is where the Coordination Office (CO) is located.

The Swedish National Research Council (SRC) is providing the funding for building up Swedish ICOS with the intention that the infrastructure will have a lifespan of upwards of 20 years. The operational costs are shared between the partners and the SRC.



The organization of ICOS Sweden is regulated by contracts between the SRC and Lund University, and by a consortium agreement between partners.

The infrastructure is led by an independent Board, which has the support of an International Advisory Committee (IAC) and an External Users' Group (EUG). A number of reference groups, with representatives of participating organizations and other users of the infrastructure, are linked to the board.

All measurement stations are staffed by a Principal Investigator (PI) and 1-2 full-time technical staff. Together, the PIs form the Station Coordination Group (SCG) which meets regularly with the Coordination Office to discuss and coordinate the work at the stations.



The 7 ICOS Sweden field stations: Abisko-Stordalen (subarctic mire), Degerö (boreal mire), Svartberget (boreal pine/spruce forest), Norunda (boreal spruce/pine forest), Lanna (cropland), Östergarnsholm (marine) and Hyltemossa (southern boreal spruce forest). Three sites also have tall towers, allowing for atmospheric observations.

The ICOS Sweden ecosystem and atmosphere stations are being equipped according to the ICOS "class 1" criteria, and will start delivering data to the Thematic Centers during 2014. The network is expected to be fully operational in mid-2015.

All ICOS Sweden field stations will serve as "national base stations" for a wide range of other research projects within the climate and environment area. Since the stations will be equipped with electricity, internet, computers, staff and so on, many other projects, both long-term and short-term, can be linked to them – for example, in the fields of meteorology, biodiversity, land and soil studies, nitrogen deposition, hydrology etc.

This will stimulate and bolster a free and open scientific data exchange and cross-disciplinary cooperation in Swedish and Nordic environmental and climatological research. A number of synergy effects are expected from this - for instance, the possibility of more holistic studies of how different phenomena depend on each other and the climate.

Funding for the construction and operations of ICOS Sweden is provided by the Swedish Research Council (Vetenskapsrådet) and the partners.



Vetenskapsrådet