

Article

Human–Robot Interaction for Improving Fuselage Assembly Tasks: A Case Study

Elena Laudante, Alessandro Greco *, Mario Caterino and Marcello Fera

Department of Engineering, University of Campania Luigi Vanvitelli, via Roma, 29–81031 Aversa (CE), Italy; elena.laudante@unicampania.it (E.L.); mario.caterino@unicampania.it (M.C.); marcello.fera@unicampania.it (M.F.)

* Correspondence: alessandro.greco@unicampania.it; Tel.: +39-081-50-10-318

Received: 17 July 2020; Accepted: 17 August 2020; Published: 20 August 2020



Abstract: In current industrial systems, automation is a very important aspect for assessing manufacturing production performance related to working times, accuracy of operations and quality. In particular, the introduction of a robotic system in the working area should guarantee some improvements, such as risks reduction for human operators, better quality results and a speed increase for production processes. In this context, human action remains still necessary to carry out part of the subtasks, as in the case of composites assembly processes. This study aims at presenting a case study regarding the reorganization of the working activity carried out in workstation in which a composite fuselage panel is assembled in order to demonstrate, by means of simulation tool, that some of the advantages previously listed can be achieved also in aerospace industry. In particular, an entire working process for composite fuselage panel assembling will be simulated and analyzed in order to demonstrate and verify the applicability and effectiveness of human–robot interaction (HRI), focusing on working times and ergonomics and respecting the constraints imposed by standards ISO 10218 and ISO TS 15066. Results show the effectiveness of HRI both in terms of assembly performance, by reducing working times and ergonomics—for which the simulation provides a very low risk index.

Keywords: aerospace production; ergonomics; human–robot interaction; simulation

1. Introduction

In the new industrial era, ergonomics is crucial for occupational safety and productivity improvement in different manufacturing sectors such as the automotive and aerospace industry, which is one of the largest and most demanding production areas. Therefore, safety is a fundamental aspect that is sought through the use of improved tools in production processes, and the implementation of efficient and safe techniques to adapt people to work in order to optimize well-being and to increase productivity.

Focusing on the aerospace field, the design of appropriate workstations is essential to improve occupational health, safety and work efficiency [1]. Even if aerospace production is not as systematized as automotive production—with much longer cycle times—it is equally affected by ergonomic issues. On the contrary, in many working activities characterizing aerospace production lines, the biomechanical load is very high due to awkward postures, lifting heavy components, exerting high forces and repetitive actions. Even in the case of the aerospace industry, if workers are subject to these factors, the risk of injury and muscle fatigue is high [2].

Many studies show that interactions among humans, technologies, organizations and working environments are strictly influenced by ergonomics. Often, the main causes of quality deficiencies are associated with ergonomic issues in terms of environmental conditions, suitable design of technology and an inappropriate organization [3].

Therefore, ergonomics may become the driving force for the improvement of new quality processes and production strategies. In aerospace field, improving ergonomics allows reaching the aim of producing high quality aircraft through the study of human specifications for the suitable design of the living and working environment [4]. Tools, devices, machines, appliances and the environment all lead to the advancement of the safety levels, well-being and human performances, as suggested by Kroemer et al. [5].

In industry, humans represent the primary production resource, and their efficiency in performing working tasks represents the main factor of productivity, a primary factor of economic activity [6].

In the literature concerning aerospace applications, it is possible to find many studies on the analysis of ergonomic aspects such as the safety and comfort in the passenger cabin and passenger compartment. These studies are mainly focused on the assessment of key factors, such as head and legroom and the ease with which the stowage can be reached. However, from the production process point of view, rarely ergonomic factors have been analyzed during the assembly phases, applying ergonomics principles only in borderline situations and in limited space, a typical condition to which the operators are exposed, which increase the risk of musculoskeletal injuries [7].

In this sense, studies were conducted during the wing assembly phases which, as most aerospace components, require static and uncomfortable postures that increase the risk of physical illness and hinder the execution of tasks. Different solutions to optimize the assembly process were investigated [8,9], by changing the orientation and accessibility of the product through the introduction of a rotating device capable of keeping the entire wing in an open box condition and allowing the operator to assume ergonomic postures.

However, except in rare case, since ergonomics has never been adequately considered, the need to design new production lines, based on ergonomics principles, arises; in this case, simulation tools and virtual ergonomics are essential to design safe and high-performance workstations [10]. Indeed, in the recent years the industrial world is experiencing a massive implementation of digital technological systems. These could be useful for better verifying and validating the ergonomic factors in the design, production and maintenance processes and, in general, for testing the design solutions and the functionality of machines or robots. This allows detecting certain errors before the real production phases.

About ergonomics, simulation and digital twin (DT) allow considering human factors preventively, since the design phase. This is a fundamental aspect of the Industry 4.0 paradigm, which has the human-centered design as one of its main pillars.

In the literature, there are many studies focused on the use of virtual simulation for investigating the ergonomic issues in manufacturing production processes, especially for the automotive sector [11–15], even if, as demonstrated by Cimino et al. [16], in the current literature, DTs have many missing elements to be compliant to their description. The numeric approach provided by DT and simulation, gives the opportunity to simulate manual or automatized working tasks and, hence, to evaluate the performance indices and to identify critical issues in a virtual scenario, without any real experimental test.

A further potential contribution for reducing exposure to occupational risk and at the same time increasing production efficiency is certainly the introduction of robots into the production system.

The use of high-tech industrial robotics, now widespread in all manufacturing sectors, is finding its way into almost all phases of the production process, from automated and flexible assembly to component processing, from production control to final palletization in order to guarantee control, quality and flexibility. Obviously, the use of robots is also changing the human role, which in the era of Industry 4.0 is becoming smarter than before, leaving to robots and machines the hardest tasks [17].

In aerospace, this implementation is currently not comparable to other production fields. Assembly in aircraft production is among the least automated sectors of the industry for different reasons. These are large and complex systems that involve a very wide variety of activities to be carried out in the production phases, whose aerospace components require low production numbers, with processes that require hours of work for the single component.

The workspace is limited and with the presence of obstacles and technical barriers in compliance with the need to achieve high levels of quality and precision and to satisfy safety and reliability. In response to the relative difficulties in introducing robotics in the aerospace sector, research is moving towards the implementation of robotic instrumentation initially tested through artificial visions and virtual prototyping, offering new perspectives to aerospace production.

In different studies, the strong benefits that the use of robotics can bring within the aerospace process are being understood, as in the case of Tingelstad et al. [18]. They have shown how the use of industrial robots, associated with a high precision noncontact measurement system, allows automating some assembly and spot welding operations for aerospace components.

The application of the human-centered design approach and the introduction of robots that can interact with humans in the production system could represent a challenge for the aerospace industry which, as demonstrated by the lack of literature, is still linked to essentially manual and no repeatable production systems. In particular, the use of virtual simulation, being an open issue for aerospace applications, will allow technical data to be transformed into three-dimensional designs with a strong visual impact covering all phases of the design cycle.

Aim of this study, part of a Clean Sky Horizon 2020 research project, is to present a methodology that, by using simulation, enables users to evaluate advantages due to the introduction of a HRI in a completely manual work cell before the cell is physically realized. Results from a real case are presented. Case study is about the reorganization of the working activity carried out in a workstation in which a composite fuselage panel is assembled no more only by humans. In detail, robots will be introduced for carrying out several operations, sharing the same working space with the worker and respecting all the safety requirements. As already partially presented in [19], the introduction of HRI enables both a working times reduction and also an improvement of the workload for humans, as demonstrated in the following sections. By performing a simulation, the adopted solution was verified and the ergonomic index related to postures assumed by workers during manual tasks was evaluated by mean of OWAS (Ovako working posture analysis system) method.

The use of digital models and simulation represents a fundamental step for solving validation studies for the introduction of automatic processing systems instead of the traditional systems used for composite materials, which are very often manual and not repeatable.

The reminder of this study is organized as follows: Section 2 focused on the Human–Robot Interactions and its advantages for industrial applications. Moreover, a wide overview about the regulatory framework in robotics is provided. Section 2.1 describes the methodology herein used to assess benefits of HRI introduction. Section 3 describes the investigated case study regarding a real workstation in aerospace production line, that will be only described using words or misaligned data to preserve the confidentiality of the project results; in particular, a composite fuselage panel is assembled and riveted, with a detailed description about a numeric simulation and the data provided. Section 4 presents results analyses and discussion while Section 5 further concludes the study.

2. Human–Robot Interaction and Regulatory Frameworks

Recently, there has been a massive growth of the interest by industries about the possibility to introduce safe robots in their production lines in order to improve the production itself by letting robots share common space with humans. Humans and robots could potentially execute a variety of useful tasks under safety premises [20]. The study of robotic systems capable of perceiving the environment in a complex way and to interact with it is a recurring topic especially in the human–robot interaction field and represents the starting point for advanced research and technology transfer, considering interfaces and human–robot interaction one of the main research objects of the discipline of robotics.

Typically, HRI is often associated with the use of collaborative robots. However, an interesting differentiation has been proposed by Schmidtler et al. [21], which identifies three kinds of interaction: coexistence, cooperation and collaboration. Coexistence occurs when human and robot are in the same

space at the same time. In cooperation, humans and robots share the same aim. However, by adding a physical contact (auditory or haptic), it is possible to talk about collaboration.

Other levels of interaction have been introduced by Shi et al. [22]: (i) low—when the human does not enter the working space of robotic system; (ii) medium—characterized by a de-energization of servo drives when human is close; (iii) high—when the robot can move near humans.

Bender et al. [23] even proposed five levels of interaction: cell—when the robot is in a cage; coexistence—when human and robot does not share the workspace not shared; synchronized—when only one between human and robot is present at a time; cooperation—when human and robot share the workspace, but they do not perform simultaneous tasks; collaboration—when human and robot work on the same product simultaneously.

As a still open issue, many other differentiations have been proposed in the literature—even if none of them is exhaustive [24]. Regardless, in the future, HRI will surely tend increasingly towards replicating human–human interactions.

The introduction of robots into a workspace to carry out assembly operations allows to achieve several benefits, especially regarding the quality of operations, task repeatability, reduction of working times and reduction of ergonomic risk. Table 1 describes the pros and the cons considering three modes of working in a workstation: only human, only robot and human and robot together (HRI).

Table 1. Pros and cons of human–robot interaction (HRI).

	Pros	Cons
Human	Perception of operations Decision making Working-process control	Working times Ergonomic issues Task repeatability not ensured Quality of operations Fatigue Working load Risk of injuries High full cost
Robot	Reduction of working times Quality of operations Task repeatability Not ergonomic issues Continuous working Scale economy	No perception of operations Low control of working process
Human–Robot Interaction	Reduction of working times Quality of operations Task repeatability Reduction of ergonomic issues Continuous working Decision making Perception of operations Working-process control	Continuous safety control

However, improved quality of life and increased levels of occupational safety are the basis for the massive introduction of flexible automation in current production processes. In the case of repetitive, monotonous and dangerous tasks, the implementation of robotic systems makes it possible to increase the quality and precision of work [25] as well as reduce production costs and the relationship between humans and robots that defines the morphology of increasingly flexible, sustainable, ergonomic, intelligent and smart factories [26]. Sensors, machines, workers and IT systems connected to each other along the value chain, give rise to countless technical and economic benefits for future manufacturing through the use of different technologies that fit into the different industrial phases, starting from product/process design, monitoring and control, production operations, services.

The factory of the future will be characterized by human–machine coexistence, cooperation and coordination where the latter adapts to human’s times and ways and through which advantages such as production flexibility, high performance and competitiveness on the global market are generated. The autonomy of "evolved" robots derives from the ability to process information collected by sensors and to plan the sequence of actions to be taken.

Thanks to numerous studies on safety in HRI that are being conducted [27], it is plausible to argue that robots interacting with humans will not require perimeter security fences. They will replace human in performing repetitive or dangerous working tasks, increasing the efficiency of industrial plants and ensuring the workers’ safety. Among these types of robots, currently Collaborative Robots are undoubtedly the most widespread in innovative industrial contexts, representing the avant-garde of robotics in the industry. However, as anticipated, there is concern about its impact on occupational health and safety management [28].

In the complexity of a HRI, the physical viewpoint is mainly focused on the risks of collisions occurring between the robot and its user [29].

Human–robot collaboration needs to deep-in safety aspects, comfort of use, safety perception and ergonomic guidelines. Technical specifications and standards, such as ISO TS/15066 [30], are taken into account, which provides guidance for the use of robots in collaborative operations based on safety requirements. ISO TS/15066 integrates the provisions and guidelines on the operation of collaborative industrial robots indicated in ISO 10218-1 [31] and ISO 10218-2 [32]. The current safety standards related to the discipline of robotics are actively updated in order to respond to any problems encountered in working environments.

ISO 12218 is divided into two parts: ISO 10218-1:2011 Robots and robot equipment—safety requirements for industrial robots; Part 1: Robots; ISO 10218-2: 2011 Robots and robot equipment—Safety requirements for industrial robots; Part 2: Robot systems and robot integration.

In the first part, a guidance for safety in design, protective measures and instructions about the use of industrial robots are introduced, describing the basic hazards and providing characteristics needed to eliminate or, at least, reduce the risks associated with them. The second part specifies the hazards arising from the integration of industrial robots into production lines and identifies the minimum safety requirements from undertaken by manufacturer, supplier and user to ensure a safe working environment.

Going into detail about the type of robots, the standard that concerns specific collaborative robots is ISO/TS 15066:2016, specifying the safety requirements for industrial collaborative robotic systems and the working environment. Designers of robotic systems must have full knowledge of current safety standards and must proceed according to the concept of awareness, fault tolerance and explicit communication, relying on the needs of research in the safety area [33]. This attention enables to move scientific progresses achieved in the field of HRI to an industrial level [34].

From ISO 10218 to ISO/TS 15066:2016

Currently, this specification is the most detailed document which gives guidelines about safety requirements in the field of collaborative industrial robot work cells and it is mainly focused on mechanical risk.

According to the specification, to ensure a safe collaboration among human workers and robot systems, mechanical risks must be minimized in order to avoid unexpected contacts in terms of gravity and/or probability. ISO/TS 15066 introduces four different methods for safe HRI: *Safety-rated monitored stop* which provides for the stop of robot motion when an operator enters the collaborative workspace. Then, only when the operator leaves the zone, the robotic task can automatically resume. *Hand guiding* method takes into account the operator that is able to fully control the robot motion by direct physical interaction. Hence, the operator can guide manually the robotic task, simply by moving the robotic arm by mean of a tool located at or near the end-effector. The operator can enter in the collaborative working zone only once the robot has achieved a safety-rated monitored stop condition. For the

speed and separation monitoring method, the speed and distance among human and robots must be continuously monitored by means of a control system. Thus, the robot is able to dynamically maintain a correct combination of speed and distance in order to avoid the possibility of any hazardous motion which may be the cause for unexpected contacts.

The last one is *power and force limiting* in which the biomechanical risk of unexpected human–robot contacts is sufficiently reduced either through inherently safe means in the robot or through a safety-related control system [35].

Since the case study here-in presented falls within the speed and separation monitoring context, some additional information is provided below.

In particular, the protective separation distance (S_p), defined in Equation (1), is a function $f(\cdot)$ of:

- the robot-system reaction time (T_r): the time required for detecting the operator, elaborating the signal and activating the stop;
- the stopping time of the robot (T_s): the time among the start of stop signal and the instant in which the robot halts;
- the speed of the human worker in direction of the robot’s moving tool (V_h);
- the speed of robot in course of stopping (V_s): the time between the stop signal activation and the real stopping instant;
- the intrusion distance (C): the distance that a part of the body can intrude into the sensing area of the robot before it is detected;
- the position uncertainty of the operator in the shared workspace (Z_d) and the position uncertainty of the robot system (Z_r):

$$S_p = f(T_r, T_s, V_h, V_s, C, Z_d, Z_r) \quad (1)$$

Thus, while the ISO 10218 describes in general terms the 4 types of collaborative operations, ISO 15066 adds new information to improve the design criteria of a collaborative system. Although not normative, the technical specification accurately describes the state of the art of safety of collaborative actions and provides specific guidance for risk assessment. ISO 10218, which focuses on industrial robots in general, leaves room for ISO/TS 15066, which focuses on collaborative robots and the definition of requirements to ensure the safety of production operators interacting with robotic systems. A further step forward is the presence of data on injury levels through the identification of pain thresholds in the different parts of the body in contact with the robot and the related force and pressure levels that lead to the improvement of the design of the systems avoiding the exceeding of these thresholds in case of human–robot contact.

2.1. Methodology

This section proposes the methodology herein used to assess benefits due to the introduction of robots in work cells in which the current job is completely manual. The procedure is generally applicable, and it is represented in Figure 1.

The procedure consists of three main steps, each one composed by others sub-steps.

The first step concerns the evaluation of the current job (blue box in Figure 1), which is manually performed. In particular, the procedure starts by evaluating the methods used to carry out manual tasks and the related working times. This part of the procedure is assessed by an expert analyst by means of traditional techniques used to estimate working times. This first evaluation gives the possibility to identify the parts of the working cycle in which robots can replace humans, preferring high precision tasks.

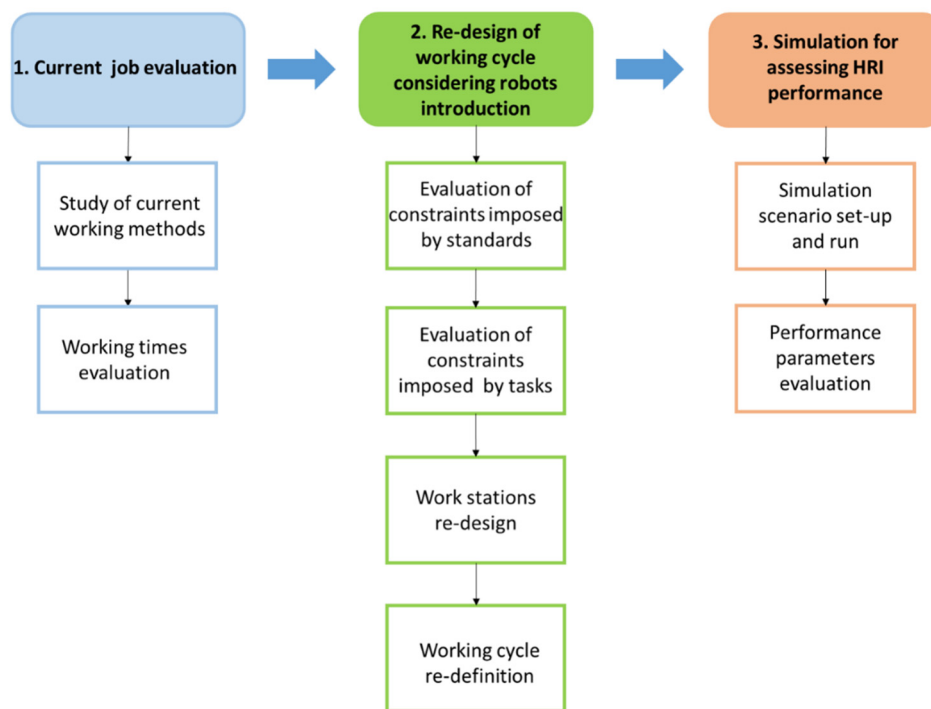


Figure 1. Methodological procedure for HRI definition.

The second step of the procedure (green box in Figure 1) aims to redesign the workstation layout and redefine the working cycle, by considering the introduction of robots. In detail, robots are introduced in order to improve the working cycle by reducing working times and increasing the quality of the performed tasks, thus minimizing the probability to produce defective components. In order to achieve these results, a redesign of the working cell as well as a redefinition of the working tasks may be necessary to implement the HRI. Hence, this step requires to take into account the definition of constraints imposed by both working tasks and by Standards regulating the HRI implementation, as described in the previous Section 2. Thus, the design of the new working cell and the assignment of tasks to human and robots can be achieved only once some parameters (T_r , T_s , V_s , C , ...) and the kind of robots have been defined.

The last step of the procedure (orange box in Figure 1) is about the assessment of the new work cell and working cycle performance by means of simulation. In order to perform the simulation, the real working environment must be reproduced in a virtual scenario; this implies the implementation of:

1. parts belonging to the real working station (by means, for instance, of CAD files), such as tools, handling lines, work benches, etc.;
2. digital human models (DHMs) which reproduce the anthropometric characteristics of the real workers;
3. digital robots, which reproduce the models of robots that will be used, including the kinematics.

Once the simulation environment has been defined, it is possible to assess the desired performance parameters (such as working times or ergonomics) and to put in evidence eventual critical issues.

3. Case Study

This section focuses on the investigation about HRI application for improving working times and ergonomics of a working process for composite fuselage panel assembly.

The case study derives from a European Clean Sky Horizon 2020 Project, named “Lean robotized Assembly and cOntrol of composite aeRostructures (LABOR)” that is coordinated by Loccioni and with Leonardo SpA as topic manager. The goal of the project is to redesign a workstation in order

to implement a HRI for a working cell currently characterized by manual working tasks. In detail, the new cell provides for the sharing of the same workspace by human and robots. As proposed in the procedure represented in Figure 1, an investigation was conducted numerically, by means of simulation.

After assessing the method and times of the current manual workstation (Step 1 of the procedure in Figure 1), the new solution implementing HRI, was designed by all project partners who have shared their knowledge in order to achieve the best possible solution for new work cell creation (Step 2 of the procedure in Figure 1). Then, the DT of the new HRI cell was created and simulation was used to evaluate its feasibility, considering working times and ergonomics (Step 3 of the procedure in Figure 1).

The working cycle in the HRI case was redesigned on the base of the manual one, whose characteristics were provided by the project leader company. In order to create the new working cycle for HRI, constraints imposed by ISO 10218 [31,32] and ISO/TS 15066 [30] and the sequence of operations were considered.

It is worth to note that, in the new configuration, the macro assembling operations remain the same, even if reorganized in order to ensure the human–robot coexistence. Because of the confidentiality, sharing of all the assembly cycle subtasks is not allowed; so, in Table 2, only the macro tasks of the assembly cycle, named Before HRI and After HRI, are described.

Table 2. General aircraft panel assembling operations before and after HRI.

Operation Code	Before HRI		After HRI	
	Human	Robot	Human	Robot
OP10	Assembly of shear ties, frames and aluminum stringers on CFRP skin	NA	Assembly of shear ties, frames and aluminum stringers on CFRP skin	NA
OP20	Drilling the entire fuselage panel	NA	NA	Drilling the entire fuselage panel
OP30	Countersinking the entire fuselage panel	NA	NA	Countersinking the entire fuselage panel
OP40	Hole inspection	NA	NA	Hole inspection
OP50	Disassembling of aluminum stringers	NA	Disassembling of aluminum stringers	NA
OP60	Cleaning of aluminum stringers	NA	Cleaning of aluminum stringers	NA
OP70	Deburring of aluminum stringers	NA	Deburring of aluminum stringers	NA
OP80	Application of sealant	NA	Application of sealant	NA
OP90	Reassembling of stringers on skin	NA	Reassembling of stringers on skin	NA
OP100	Riveting the entire fuselage panel	NA	NA	Riveting the entire fuselage panel

NA–Not Available.

As specified in the previous Section 2.1, robots are introduced to improve the quality of performed operations. Hence, as shown in Table 2, drilling, countersinking and riveting operations are performed on a carbon-fiber-reinforced polymer (CFRP) panel by robots in HRI configuration due to the high precision and quality needed, especially for drilling operations, whose tolerances are very strict. In fact, it has been demonstrated that robots working in specific distance areas (namely best working area) are able to respect very strict tolerances [36].

The robots selected by the company are the FANUC M 20iA. To satisfy the requirements of the standard ISO/TS 15066, all the parameters of Equation (1) were considered, assuming V_h and V_s as constant, even though the speed modulation system proposed in [37] is able to optimize these values, relying on a risk analysis performed online through a fuzzy inference system.

Figure 2b shows an example of the end effector normalized speed trend as function of the distance between the robot and the human hands (Figure 2a) when these last are detected according to the multimodal system proposed in [38]. It is worth to note that the robot has not a 1 or 0 condition of

speed, but its speed is modulated according to the distance from the worker and even the minimum separation distance S is adjusted in real time again on the basis of the actual robot and human relative positions and velocities (see [38] for more details).

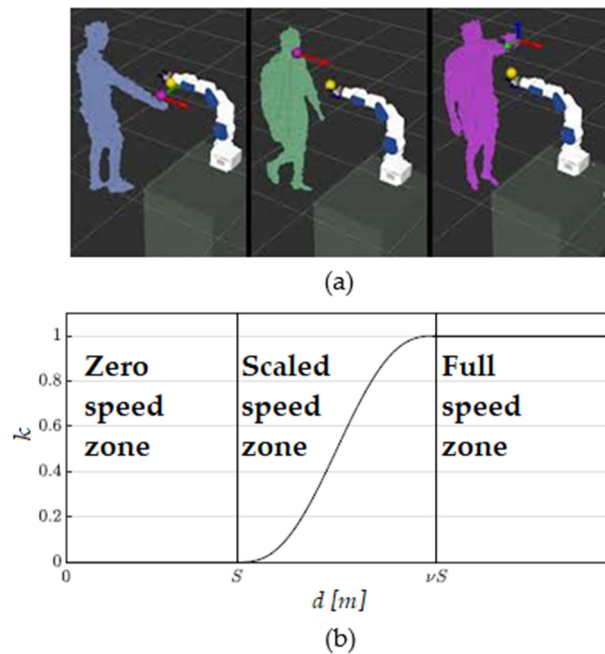


Figure 2. (a) Human-hand detection by robot sensors and cameras; (b) trend of normalized robot speed in proximity of human (plot courtesy of [37]).

As suggested by the Step 2 of the procedure in Figure 1, also the constraints due to operations precedencies were considered for each working zone and for the whole fuselage panel in order to create a feasible working cycle. The typical sequence performed in assembling a fuselage panel is represented in Figure 3, where operations code reported in Table 2 are represented.

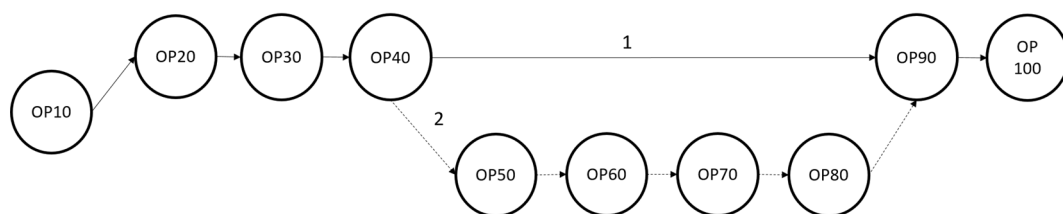


Figure 3. Precedence graph for operations of Table 2.

OP10 is a preliminary operation, not considered for the analyses in this study. In some areas, the panel is reinforced with aluminum elements (see Figure 4) and the human carries out working tasks only in these areas. For this reason, in Figure 3, two paths are represented:

1. Path 1 is followed when there are not aluminum elements in the working zone and human operations are not required;
2. Path 2 is followed when aluminum elements, such as stringers or frames, are in the working zone and also human operations are required.

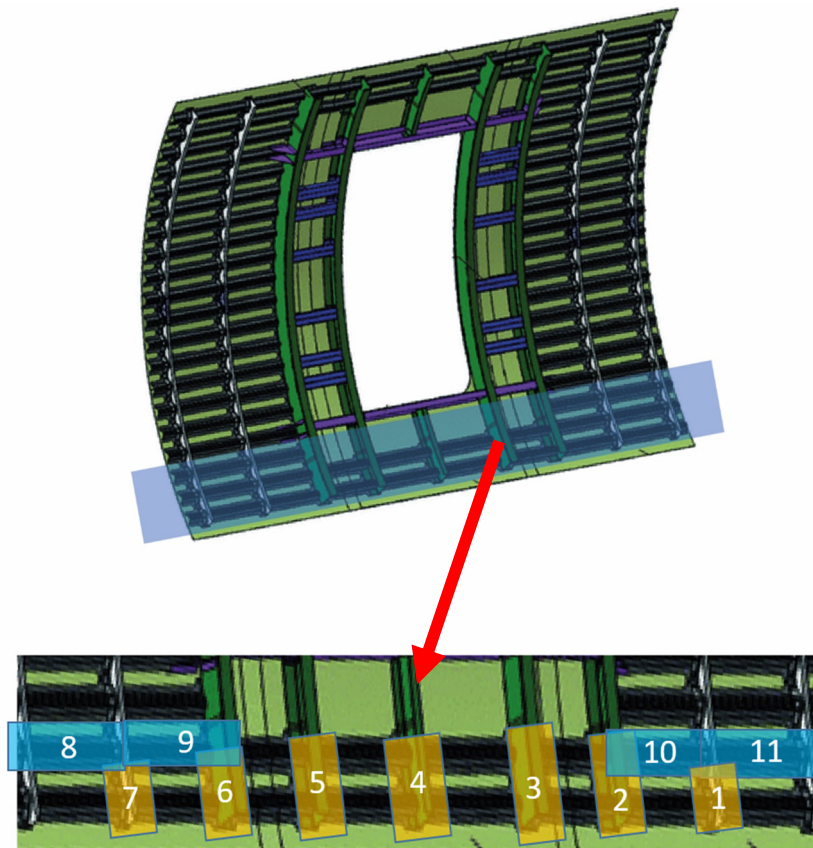


Figure 4. Aircraft panel considered in the case study (CAD drawing courtesy of [39]).

The entire working cycle for HRI was defined by respecting both constraints due to standards and due to operations precedence and it was simulated in order to evaluate the working times for panel assembling and ergonomics issues.

Moreover, according to Step 3 of the procedure in Figure 1, the 3D CAD models representing the new workstation were implemented for simulation in Tecnomatix Process Simulate by Siemens[®] software environment.

Figure 4 represents a generic fuselage panel, for privacy reasons. In figure, a zoom of one of the working sections is represented at the bottom. Here, different working zones are visible, namely yellow and blue to indicate, respectively, the zones where only robots' operations are needed (path 1 of Figure 3), and zones where also human operations must be performed (path 2 of Figure 3). This approach has been used for each section of the panel: robots work in small areas in order to respect tolerances.

Figure 5 shows a schematic configuration of the workstation in which the human and the robot share the same working area. For privacy reason, it is not represented the real station, which is provided with a scaffolding, which allows human to reach far working zones, and one of the two robots moves on a horizontal support. The panel can rotate as well as shown in Figure 5.

Concerning the worker, a DHM, representing the male P50 of Italian anthropometric database [40], was set for carrying out manual operations.

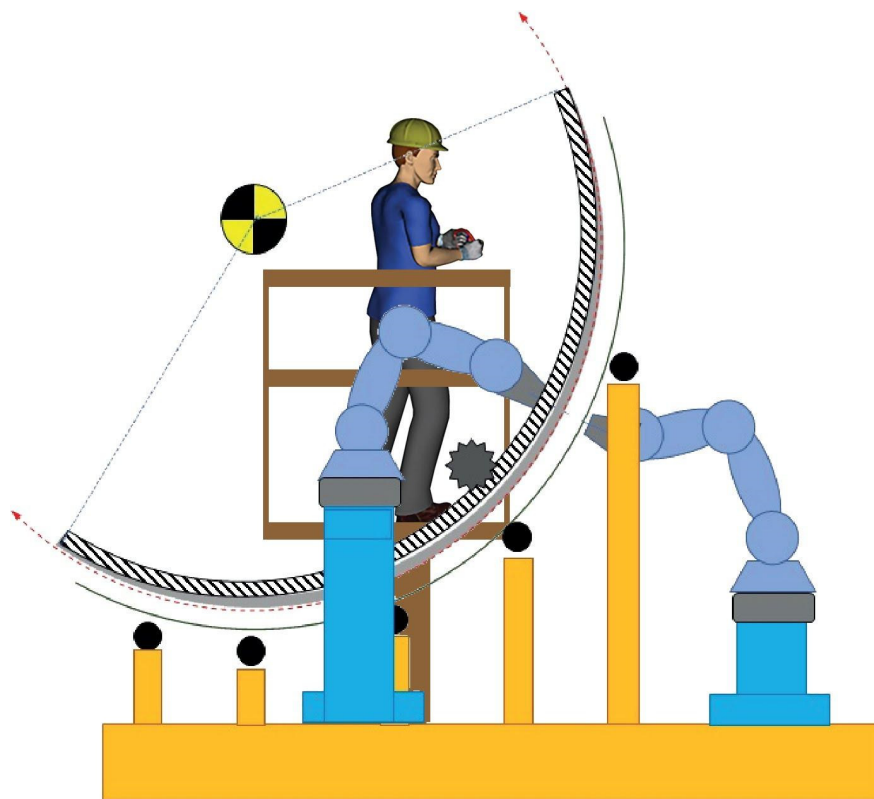


Figure 5. Workstation schematic layout.

4. Results and Discussion

According to Step 1 of the procedure in Figure 1, the working times of human, in HRI configuration, were estimated relying on the current manual configuration of the workstation. For privacy reasons, it is not possible to report the operations' times, but it can be useful to know that the assembling operations of the whole fuselage composite panel require about 3 working shifts. The analysis proposed in this study aims to evaluate if the completion time would decrease in HRI configuration. Moreover, a scale factor (SF) will be used in order to show the difference between the two configurations, as described in Table 2.

In detail, without loss of generality, the working time values (T) reported in this section, is equivalent to the scaled real working time values (RT), according to the following Equation (2):

$$T = RT \times SF \quad (2)$$

By applying Equation (2), the working time to assemble the whole panel (T_a) is 15 hours.

For estimating the working times in HRI configuration (Step 2 of procedure in Figure 1), about humans, several studies assess that in presence of robots, which may have predictable or unpredictable motions [41], humans are negatively influenced by the presence a robot [42,43], so the human working times for each operation have increased in a range between 10–20% of the estimated time, according to the type of operation. About the robots, KUKA estimated a mean reduction of working times, when a task is performed by a robot, of about 30% with respect to humans' times [44].

Consequently, for the tasks performed by robot (namely drilling, countersinking, inspection and riveting), the working times (T_R) values are assumed to be reduced of 30% with respect to the previously estimated working time, according to Equation (3).

$$T_R = RT \times SF \times 0.70 \quad (3)$$

Other robots’ operations, such as the referencing of the working zone, the moving times, the end-effector tool changing times, etc., depend on the robots’ characteristics. On each digital robot the real robot controller was implemented to define the minimum and maximum linear speeds, the joints’ rotation speed and other important parameters.

Two types of cycle were implemented to simulate two different assembling scenarios. The first one cannot be considered as HRI, since the human and robots never work at the same time: when human is performing a task, the robot is passive and vice versa. In the second case, human and robots share the same working zone by respecting the constraints imposed by ISO-TS 15066 and their operations can be performed simultaneously, as shown in Table 3, representing part of the working cycle where same colors identify operations performed simultaneously.

Table 3. Part of the working cycle in HRI configuration.

HUMAN			ROBOT		
Operation Description	Estimated Time—T (s)	Working Area	Operation Description	Estimated Time—T (s)	Working Area
Lifter Positioning	38	Slot 1, Area 11	Referencing working area	38	Slot 5, Area 3
Pop Rivets Removal	31	Slot 1, Area 11	Execute the entire cycle of drilling, countersinking, hole inspection, change tool, fastener installation and control		Slot 5, Area 3
Stringer Disassembling	51	Slot 1, Area 11			
Deburring of Holes	247	Slot 1, Area 11			
Sealant Application	201	Slot 1, Area 11	Referencing working area	38	Slot 5, Area 2
Stringer Reassembling	51	Slot 1, Area 11	Execute the entire cycle of drilling, countersinking, hole inspection, change tool, fastener installation and control		Slot 5, Area 2
Clecos Application	76	Slot 1, Area 11			
Lifter Positioning	16	Slot 2, Area 12			
Pop rivets Removal	15	Slot 2, Area 12			
Stringer Disassembling	25	Slot 2, Area 12			

Simulations were performed considering both simultaneous and separated working tasks.

The working times of Table 3 consider also the time required for human’s micro-movement, such as walking, raise an arm, grasp an object, etc., which are implemented in Tecnomatix Process Simulate, based on MTM (method and time measurement) tables.

Results provided by the simulations are shown in Table 4 where there is a comparison between the different configurations: only manual, human and robot in sequential performing and HRI.

Table 4. Simulation results.

	Only Manual	Human–Robot	HRI
Time to Assemble (h)	15	8.78	7.86
Reduced Time (h)	0	6.22	7.14
% of Reduced Time	0	41.5%	47.6%

The implementation of robots in the workstation drastically reduces the working time for assembling the whole panel. This time is furtherly reduced in HRI configuration, where the difference with the manual configuration is almost the 50%.

Moreover, other details about HRI configuration are described in Table 5; both human-worker and robots have downtimes (namely passive time) due to constraints imposed by ISO-TS 15066 and mechanical constraints.

Table 5. Working time detail for human and robot in HRI configuration.

	Active Time (h)	Passive Time (h)	Interaction Time (h)	Passive Time (%)
Human	2.23	5.61	1.04	71.4
Robots	6.67	1.19	1.04	15.1

Some considerations may be done from results reported in Tables 4 and 5:

- Implementation of robots reduces the total working time for assembling the panel;
- Interaction time, i.e., the time during which human and robots work simultaneously, sharing the same working area, is about 13% of the total time. This can be furtherly increased by working-cycle optimization;
- Passive time for human is very high, suggesting that one worker may follow the assembling of more than one panel during the whole working shift;
- Passive times for robots is due to the separation distance imposed by ISO-TS 15066. They depend on the presence of human in proximity of the robot, according to ISO-TS 15066: These times could be reduced by working-cycle optimization.

Ergonomics Evaluation

The second analysis was carried out to assess ergonomic performance in HRI configuration.

Generally, ergonomic analysis in manufacturing production processes needs to be performed for four main factors, cause of injury due to biomechanical overload: (i) working postures, (ii) manual material handling (MMH), (iii) exerted forces and (iv) repetitive actions. In this case, only the assumed working postures contribute to biomechanical load, since there are no repetitive actions during the work shift, as well as no objects weighting more than three kilograms to handle or lift. About exerted forces, robots perform all drilling and countersinking tasks, which are the only ones for which forces are required. Thus, also exerted forces may be neglected in ergonomic analysis.

Hence, in order to analyze working postures, Ovako Working posture Analyzing Systems (OWAS) method [45] was used. OWAS method provides risk assessment for whole body by analyzing postures assumed by human workers. It assumes four risk classes, identified by four different weights, namely 1, 2, 3, 4.

In particular, weights for each risk class can be defined as follows:

- Risk class 1: no risk;
- Risk class 2: low risk;
- Risk class 3: medium risk;
- Risk class 4: high risk.

The final output of the method is the OWAS index, represented in the following Equation (4):

$$I = [(a \times 1) + (b \times 2) + (c \times 3) + (d \times 4)] \times 100 \quad (4)$$

where a, b, c, d are the observation frequencies for each risk class. Observation frequencies may be calculated as the number of observations for each class (N_k) divided the total number of observations (N):

$$k = \frac{N_k}{N} \times 100 \text{ with } k = a \dots d \quad (5)$$

The final score is between 100 and 400. Table 6 represents the worker risk exposure based on the OWAS index and suggests possible corrective actions for high risk cases.

Table 6. OWAS index—risk areas.

OWAS Risk Index		
Value	Risk Exposure	Consequences
100	No risk	No consequences
101–200	Low risk	If possible, improve structural factors or take other organizational measures
201–300	Medium risk	Improve structural factors or take other organizational measures, rapidly
301–400	High risk	Immediate action need to change the operating methods, the equipment used or the work positions of the workers

Typically, the OWAS procedure also considers the handled weight higher than 10 kg. Since all the tools handled by human have weight less than 10 kg, the mass does not contribute to the OWAS index.

Another important factor affecting the accuracy of OWAS analysis is the sampling time of DHM movement. In fact, a great advantage of the analysis performed by using a digital reproduction of the real workstation is the possibility to vary the sampling time in order to achieve a good tradeoff between quality of the analysis and computational time. In particular, by decreasing the sampling time, more positions are acquired and analyzed, but the processing time increases and vice versa. In this study, a good compromise was achieved by fixing sampling time at 0.05 seconds (20 Hz frequency). The processing time, considering only human active times, was of about eight hours (already scaled by SF).

Taking into account SF, Table 7 shows the number of acquisitions falling in each action category and the observations frequency.

Table 7. Simulation results—OWAS coefficients.

Action Category	# of Observations	Observations Frequencies	% Value
1	114,983	a	93.885%
2	4840	b	3.951%
3	2649	c	2.163%
4	0	d	0.000%
	122,472	Total	100%

OWAS index can be calculated applying Equation (4):

$$I = [(0.93885 \times 1) + (0.03951 \times 2) + (0.02163 \times 3) + (0 \times 4)] \times 100 = 108.278 \tag{6}$$

The value of OWAS index falls within the low risk area; hence, there is no need for immediate corrective actions, but if possible, some organizational measures may be taken to improve the workstation. Concerning simulation, an important data are that only 7489 observations belong to action category 2, 3 or 4, corresponding to about six minutes of the human working cycle, highlighting the fact that occurring of musculo–skeletal disorders is very unlikely for this station.

5. Conclusions

In this study, the potential benefits of HRI was investigated for a real aerospace application. In particular, a methodology for redesigning a workstation was introduced and a real case study, in which a composite fuselage panel is assembled by human and robots, was proposed. The safety requirements and constraints imposed by standard ISO 10218 and ISO/TS 15066 were considered. In order to verify the feasibility of the approach, a simulation was carried out to evaluate the performance of the workstation in terms of both working times and ergonomics.

The results show a significant improvement of assembling performances in HRI configuration: in fact, the total assembling time is reduced of 47.6% with respect to the same activity manually

performed. Concerning ergonomics, the OWAS index was evaluated and the result demonstrate that HRI allows the human working in extreme safety conditions, in terms of risk of work-related injuries. Unfortunately, it has not been possible to compare the obtained results with those of the OWAS index in the case of manual processing. However, it is presumable that, in this last case, the values are higher, considering the difficulty in reaching the working areas and the application of forces, together with the handling of additional loads, especially in performing drilling operations.

Numeric results validation, by means of comparison with experimental results, is not possible since the physical workstation is still not available. However—as already previously described—the literature demonstrated that numeric models for simulating manual operations provide results in agreement with those ones provided by experimental tests [11–15].

Future developments may be focused on the optimization of the sequence of tasks of the working cycle in order to assess the maximum benefits which can be obtained by employing the HRI solution. Computational time of the simulation can also be optimized by finding a tradeoff between the number of acquisition needed and the quality of the ergonomic assessment.

Author Contributions: Conceptualization, A.G., M.C., E.L., M.F.; methodology, A.G., M.C., M.F.; software, A.G., M.C.; formal analysis, A.G., M.C., E.L., M.F.; data curation, A.G., M.C.; writing—original draft preparation, A.G., M.C., E.L.; writing—review and editing A.G., M.C., E.L., M.F.; visualization, A.G., M.C., E.L.; supervision, M.F.; project administration, M.F.; All authors have read and agreed to the published version of the manuscript.

Acknowledgments: This work was supported by the European Commission under the H2020 Framework Clean Sky JTI-project LABOR, ID no. 785419, topic manager: Leonardo SpA.

Conflicts of Interest: No conflict of interest to declare.

References

1. Burgess-Limerick, R.; Steiner, L.J.; Torma-Krajewsky, J. *Ergonomics Processes: Implementation Guide and Tools for the Mining Industry*; US Department of Health and Human Services: Washington, DC, USA; Centers for Disease Control and Prevention: Atlanta, GA, USA; National Institute for Occupational Safety and Health: Washington, DC, USA; DHHS (NIOSH): Pittsburg, PA, USA, 2009.
2. Seri Rahayu, K.; Norhidayah, H.; Shahrizan, O.M. A Study on Muscle Fatigue Associated with Awkward Posture among Workers in Aerospace Industry. *Adv. Eng. Forum* **2013**, *10*, 287–292. [[CrossRef](#)]
3. Eklund, J.A. Ergonomics and Quality Management—Humans in Interaction with Technology, Work Environment and Organization. *Int. J. Occup. Saf. Ergo.* **1999**, *5*, 143–160. [[CrossRef](#)]
4. Getty, R.L.; Getty, J.M. Ergonomics Oriented to Processes Becomes a Tool for Continuous Improvement. *Int. J. Occup. Saf. Ergo.* **1999**, *5*, 161–194. [[CrossRef](#)] [[PubMed](#)]
5. Kroemer, K.H.E.; Kroemer, H.J.; Kroemer-Elbert, K.E. *Engineering Physiology: Bases of Human Factors/Ergonomic*; John Wiley and Sons: New York, NY, USA, 1994.
6. Lehto, M.R.; Landry, S.J. *Introduction to Human Factors and Ergonomics for Engineer*; CRC Press Taylor & Francis Group: New York, NY, USA, 2013.
7. Veasey, D.A.; Craft McCormick, L.; Hilyer, B.M.; Oldfield, K.W.; Hansen, S.; Krayner, T.H. *Confined Space Entry and Emergency Response*; Wiley: Hoboken, NJ, USA, 2005.
8. Fletcher, S.R.; Johnson, T.L. Investigating the impact of product orientation on musculoskeletal risk in aerospace manufacturing. In *Contemporary Ergonomics and Human Factors 2014, Proceedings of the International Conference on Ergonomics & Human Factors 2014, Southampton, UK, 7–10 April 2014*; CRC Press: Boca Raton, FL, USA, 2014; pp. 85–92.
9. Judt, D.M.; Lowson, C.; Lockett, H. Experimental investigation into aircraft system manual assembly performance under varying structural component orientations. *Proc. IMechE Part B J. Eng. Manuf.* **2020**, *234*, 840–855. [[CrossRef](#)]
10. Beub, F.; Sender, J.; Flugge, W. Ergonomics Simulation in Aircraft Manufacturing—Methods and Potentials. *Proc. CIRP* **2019**, *81*, 742–746.
11. Alkan, B.; Vera, D.; Ahmad, M.; Ahmad, B.; Harrison, R. A lightweight approach for human factor assessment in virtual assembly designs: An evaluation model for postural risk and metabolic workload. *Proc. CIRP* **2016**, *44*, 26–31. [[CrossRef](#)]

12. Glaeser, D.; Fritzsche, L.; Bauer, S.; Sylaja, V.J. Ergonomic assessment for DHM simulation facilitated by sensor data. *Proc. CIRP* **2016**, *41*, 140–147. [[CrossRef](#)]
13. Lawson, G.; Salanistri, D.; Waterfield, B. Future directions for the development of virtual reality within an automotive manufacturer. *Appl. Ergon.* **2016**, *53*, 323–330. [[CrossRef](#)]
14. Caputo, F.; Greco, A.; Fera, M.; Macchiaroli, R. Workplace design ergonomic validation based on multiple human factors assessment methods and simulation. *Prod. Manuf. Res.* **2019**, *7*, 195–222. [[CrossRef](#)]
15. Caputo, F.; Greco, A.; Fera, M.; Macchiaroli, R. Digital twins to enhance the integration of ergonomics in the workplace design. *Int. J. Ind. Ergon.* **2019**, *71*, 20–31. [[CrossRef](#)]
16. Cimino, C.; Negri, E.; Fumagalli, L. Review of digital twin applications in manufacturing. *Comput. Ind.* **2019**, *113*, 103130. [[CrossRef](#)]
17. Evjemo, L.D.; Gjerstad, T.; Grøtli, E.I.; Sziebig, G. Trends in Smart Manufacturing: Role of Humans and Industrial Robots in Smart Factories. *Curr. Robot. Rep.* **2020**, *1*, 35–41. [[CrossRef](#)]
18. Tingelstad, L.; Capellan, A.; Thomessen, T.; Lien, T.K. Multi-Robot Assembly of High-Performance Aerospace Components. *IFAC Proc. Vol.* **2012**, *45*, 670–675. [[CrossRef](#)]
19. Greco, A.; Caputo, F.; Caterino, M.; D’Ambra, S.; Fera, M.; Laudante, E. Composite parts assembly operational improvements. *Macromol. Symp.* **2020**, *389*, 1900098. [[CrossRef](#)]
20. Hägele, M.; Nilsson, K.; Pires, J. Industrial Robotics. In *Handbook of Robotics*; Springer: Berlin, Heidelberg, Germany, 2008; pp. 963–986.
21. Schmidler, J.; Knott, V.; Holz, C.; Bengler, K. Human Centered Assistance Applications for the working environment of the future. *Occup. Ergon.* **2015**, *12*, 83–95. [[CrossRef](#)]
22. Shi, J.; Jimmerson, G.; Pearson, T.; Menassa, R. Levels of human and robot collaboration for automotive manufacturing. In Proceedings of the Workshop on Performance Metrics for Intelligent Systems, 20 March 2012; Volume 12, pp. 95–100.
23. Bender, M.; Braun, M.; Rally, P.; Scholtz, O. Lightweight robots in manual assembly—Best to start simply. In *Examining Companies’ Initial Experiences with Lightweight Robots. Report*; Fraunhofer Institute for Industrial Engineering IAO: Stuttgart, Germany, 2016.
24. Aaltonen, I.; Salmi, T.; Marstio, I. Refining levels of collaboration to support the design and evaluation of human-robot interaction in the manufacturing industry. *Proc. CIRP* **2018**, *72*, 93–98. [[CrossRef](#)]
25. Matúšová, M.; Bučányová, M.; Hrušková, E. The future of industry with collaborative robots. *Matec Web Conf.* **2019**, *299*, 02008.
26. Magone, M.; Mazali, T. *Industria 4.0—Uomini e Macchine Nella Fabbrica Digitale*; Guerini e Associati: Milan, Italy, 2016; pp. 57–58.
27. Zacharaki, A.; Kostavelis, I.; Gasteratos, A.; Dokas, I. Safety bounds in human robot interaction: A survey. *Saf. Sci.* **2020**, *127*, 104667. [[CrossRef](#)]
28. Teixeira, J.V.S.; Reis, A.M.; Mendes, F.B.; Vergara, L.G.L. Collaborative robots and ergonomics. *Occup. Environ. Saf. Health* **2019**, *202*, 791–796.
29. De Santis, A.; Siciliano, B.; De Luca, A.; Bicchi, A. Atlas of physical human-robot interaction. *Mech. Mach. Theory* **2008**, *43*, 253–270. [[CrossRef](#)]
30. ISO/TS 15066. *Robots and Robotic Devices: Collaborative Robots*; International Organization for Standardization: Geneva, Switzerland, 2016.
31. ISO 10218-1. *Robots and Robotic Devices—Safety Requirements for Industrial Robots—Part 1: Robots*; International Organization for Standardization: Geneva, Switzerland, 2011.
32. ISO 10218-2. *Robots and Robotic Devices—Safety Requirements for Industrial Robots—Part 1: Robot Systems and Integration*; International Organization for Standardization: Geneva, Switzerland, 2011.
33. Matthias, B.; Kock, S.; Jerregard, H.; Kllman, M.; Lundberg, I. Safety of collaborative industrial robots: Certification possibilities for a collaborative assembly robot concept. In *Assembly and Manufacturing (ISAM), IEEE International Symposium*; IEEE: Piscataway, NJ, USA, 2011; pp. 1–6.
34. Rosenstrauch, M.J.; Krüger, J. Safe human-robot-collaboration-introduction and experiment using ISO/TS 15066. In Proceedings of the 3rd International Conference on Control, Automation and Robotics (ICCAR), Nagoya, Japan, 22–24 April 2017; pp. 740–744.
35. Gualtieri, L.; Palomba, I.; Wehrle, E.J.; Vidoni, R. The Opportunities and Challenges of SME Manufacturing Automation: Safety and Ergonomics in Human-Robot Collaboration (HRC). *Ind. 4.0 SMEs* **2020**, 105–144.

36. Zhu, W.; Mei, B.; Yan, G.; Ke, Y. Measurement error analysis and accuracy enhancement of 2D vision system for robotic drilling. *Robot. Comput. Integr. Manuf.* **2014**, *30*, 160–171. [[CrossRef](#)]
37. Campomaggiore, A.; Costanzo, M.; Lettera, G.; Natale, C. A Fuzzy Inference Approach to Control Robot Speed in Human-robot Shared Workspaces, *Proceedings of the 16th International Conference on Informatics in Control, Automation and Robotics—ICINCO, INSTICC, Prague, Czech Republic, 29–31 July 2019*; SciTePress: Prague, Czech Republic, 2019; Volume 2, pp. 78–87.
38. Costanzo, M.; De Maria, G.; Lettera, G.; Natale, C.M.; Perrone, D. A Multimodal Perception System for Detection of Human Operators in Robotic Work Cells. In *Proceedings of the 2019 IEEE International Conference on Systems, Man and Cybernetics (SMC), Bari, Italy, 6–9 October 2019*; pp. 692–699.
39. Daniel, S.; Andreas, K.; Robert, K.; Peter, W.; Stefan, L.; Stefan, S.; Friedrich, V.D.; Juergen, T.; Christoph, B.; Ben, N. *Development of a Door Surround Structure with Integrated Structural Health Monitoring System In Smart Intelligent Aircraft Structures (SARISTU)*; Springer International Publishing: Cham, Switzerland, 2016; pp. 935–945.
40. Masali, M. *L'Italia si Misura. Vademecum Antropometrico Per il Design e L'ergonomia. Vent'anni di Ricerche (1990–2010)*; Aracne Editore: Rome, Italy, 2015.
41. Oyekan, J.O.; Hutabarat, W.; Tiwari, A.; Grech, R.; Aung, M.H.; Mariani, M.P.; Lopez-Davalos, L.; Ricaud, T.; Singh, S.; Dupuis, C. The effectiveness of virtual environments in developing collaborative strategies between industrial robots and humans. *Robot. Comput. Integr. Manuf.* **2019**, *55*, 41–54. [[CrossRef](#)]
42. Bortot, D.; Ding, H.; Antonopolous, A.; Bengler, K. Human motion behavior while interacting with an industrial robot. *J. Prev. Assess. Rehabil.* **2012**, *41* (Suppl. 1), 1699–1707. [[CrossRef](#)]
43. Bortot, D.F. Ergonomic Human-Robot Coexistence in the Branch of Production. Ph.D. Thesis, Technische Universität München, Munich, Germany, 2014.
44. Till, R.; Peter, M. Making the Right Decisions at the Right Time. 2017. Available online: <https://www.kuka.com/-/media/kuka-corporate/documents/ir/reports-and-presentations/en/annual-report/kuka-annual-report-2016.pdf?rev=c976cc2263ef434682a6dbe81fd3e25f&hash=CF6BBC70885A83F5D4CF9EADCEBEEB81> (accessed on 10 July 2020).
45. Kharu, O.; Kansi, P.; Kuorinka, I. Correcting working postures in industry: A practical method for analysis. *Appl. Ergon.* **1977**, *8*, 199–201.



© 2020 by the authors. Licensee MDPI, Basel, Switzerland. This article is an open access article distributed under the terms and conditions of the Creative Commons Attribution (CC BY) license (<http://creativecommons.org/licenses/by/4.0/>).