



UNIVERSITÀ
CATTOLICA
del Sacro Cuore



Interlinking Corpora Through Lemmas

The LiLa Knowledge Base
of Interoperable Linguistic Resources for Latin

Marco Passarotti

CL 2021

13th - 16th July 2021, University of Limerick, Ireland



This project has received funding from the European Research Council (ERC) under the European Union's Horizon 2020 research and innovation programme - Grant Agreement No. 769994.

We have built and collected (for Latin and other languages):

- ▶ Textual Resources
- ▶ Lexical Resources
- ▶ NLP Tools

Scattered and unconnected

ERC Consolidator Grant 2018-2023

A collection of multifarious, interoperable linguistic resources described with the same vocabulary for knowledge description (by using common data categories and ontologies)

Interlinking as a Form of Interaction



Infrastructure



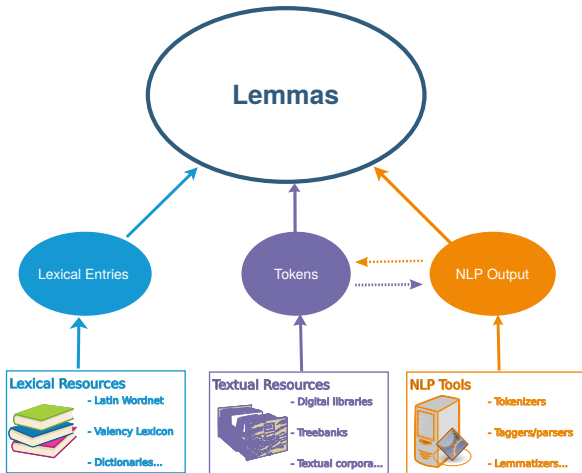
Interoperability

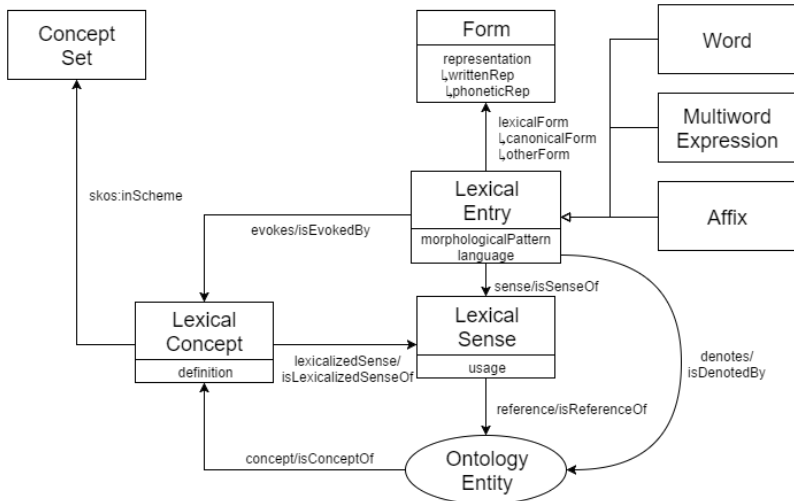
The Linked Data Principles

...just to be FAIR



- ▶ Use URIs for things (e.g. an entry in a lexicon, a token in a corpus)
- ▶ Use HTTP URIs to allow people (and machines) to look up things
- ▶ Use web standards to represent/query (meta)data, such as RDF and SPARQL
- ▶ Include links to other URIs





Lemma *admiror* ‘to admire, to respect’

<https://lila-erc.eu/data/id/lemma/87541>

- ▶ Lemma Bank
- ▶ A derivational lexicon (Word Formation Latin)
- ▶ A polarity lexicon (LatinAffectus)
- ▶ An etymological dictionary (De Vaan)
- ▶ A Valency Lexicon (Latin Vallex)
- ▶ A manually checked subset of the Latin WordNet

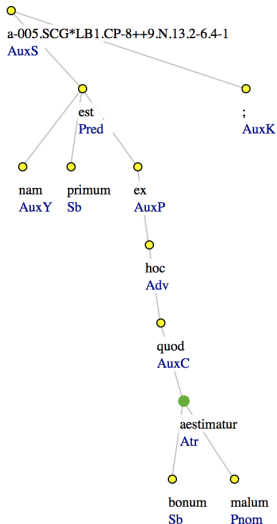
(Annotated) Corpora in LiLa

A token from the *Index Thomisticus* Treebank in LiLa (original scheme)



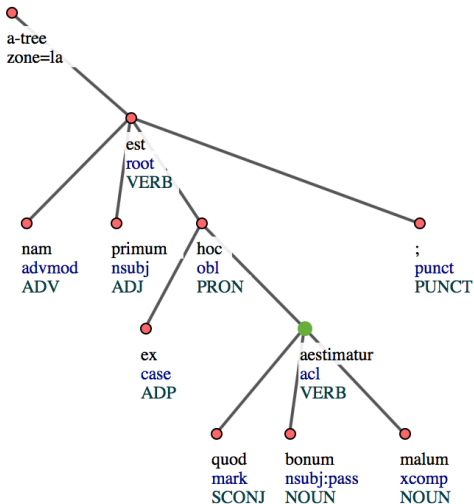
*nam primum est ex hoc
quod bonum **aestimatur**
malum;* (IT-TB: SCG, lib. 1,
cap. 89, n. 13)

*for the first arises because
the good **is judged** to be
evil;* (Trans. Anton C. Pegis)



(Annotated) Corpora in LiLa

A token from the *Index Thomisticus* Treebank in LiLa (UD scheme)



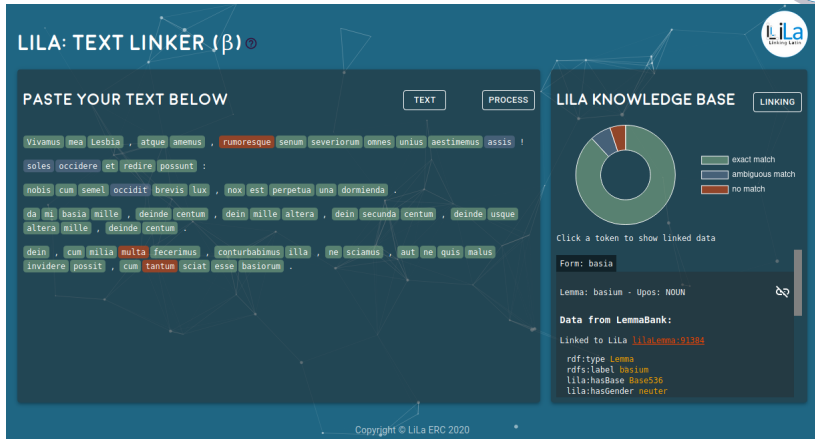
Token *aestimatur*

`https://lila-erc.eu/lodview/data/corpora/
ITTB/id/token/005.SCG*LB1.CP-8++9.N.13.
2-6.4-1W8`



The screenshot shows the 'LILA: TEXT LINKER (β)' interface. At the top left, the title 'LILA: TEXT LINKER (β)' is displayed with a beta symbol. At the top right, there is a small LiLa logo. Below the title, the instruction 'PASTE YOUR TEXT BELOW' is centered. To the right of this instruction are two buttons: 'TEXT' and 'PROCESS'. A large text area contains the following Latin text: 'Vivamus mea Lesbia, atque amemus, rumoresque senum severiorum omnes unius aestimemus assis! soles occidere et redire possunt: nobis cum semel occidit brevis lux, nox est perpetua una dormienda. da mi basia mille, deinde centum, dein mille altera, dein secunda centum, deinde usque altera mille, deinde centum. dein, cum milia multa fecerimus, conturbabimus illa, ne sciamus, aut ne quis malus invidere possit, cum tantum sciat esse basiorum. |'. At the bottom center, the copyright notice 'Copyright © LiLa ERC 2020' is visible.

Figure: LiLa's Text Linker



LILA: TEXT LINKER (β)

PASTE YOUR TEXT BELOW [TEXT] [PROCESS]

Vivamus nea Lesbia , atque amemus , rumoresque senum severiorum omnes unius aestinemus assis !
soles occidere et redire possunt :
nobis cum semel occidit brevis lux , nox est perpetua una dormienda .
da mi basia mille , deinde centum , dein mille altera , dein secunda centum , deinde usque altera mille , deinde centum .
dein , cum milia multa fecerimus , conturbabimus illa , ne sciamus , aut ne quis malus invidere possit , cum tantum sciat esse basiorum .

LILA KNOWLEDGE BASE [LINKING]

Click a token to show linked data

Form: basia

Lemma: basium - Upos: NOUN

Data from LemmaBank:

Linked to LiLa [lilaLemma:91294](#)

rdf:type Lemma
rdfs:label basium
lila:hasBase Base536
lila:hasGender neuter

Copyright © LiLa ERC 2020

Figure: Text processed against the LiLa Knowledge Base

<http://lila-erc.eu:8080/LiLaTextLinker/>

► Corpora

- ✓ Index Thomisticus Treebank (*Summa contra Gentiles*): ca. 450,000 nodes
- ✓ Dante Search (700th death anniversary): ca. 46,000 tokens
- ✓ *Querolus sive Aulularia*: ca. 17,000 tokens
- PROIEL and LLCT treebanks
- Computational Historical Semantics, LASLA and CroALa Corpora

► Lexica

- ✓ Word Formation Latin: ca. 46,000 lemmas (Classical Latin)
- ✓ Etymological dictionary of Latin & the other Italic Langs.: ca. 1,400 entries
- ✓ LatinAffectus: ca. 2,300 entries
- ✓ Index Graecorum Vocabulorum in Linguam Latinam: ca. 1,800 entries
- ✓ Latin WordNet: ca. 1,000 manually checked entries
- ✓ Latin Vallex 2.0: Valency Lexicon
- Lewis & Short Dictionary

► NLP tools

- ✓ LEMLAT (lemma bank): ca. 150,000 lemmas

► TOTAL: approximately 13 million triples

Query Interface, Triplestore and Linker

- ▶ Query interface; Triplestore
- ▶ Linker

Linguistic Resources. Corpora

- ▶ Index Thomisticus Treebank
- ▶ Dante Search
- ▶ *Querolus sive Aulularia*

Linguistic Resources. Lexica

- ▶ Word Formation Latin
- ▶ Etymological Dictionary of Latin & the Other Italic Languages
- ▶ LatinAffectus
- ▶ Index Graecorum Vocabulorum in Linguam Latinam
- ▶ Latin WordNet
- ▶ Latin Vallex 2.0

Thanks!

Get in touch



LiLa: Linking Latin

Università Cattolica del Sacro Cuore
CIRCSE Research Centre



info@lila-erc.eu



<https://github.com/CIRCSE>



<https://lila-erc.eu>



@ERC_LiLa



Largo Gemelli 1, 20123 Milan, Italy



This project has received funding from the European Research Council (ERC) under the European Union's Horizon 2020 research and innovation programme - Grant Agreement No. 769994.