

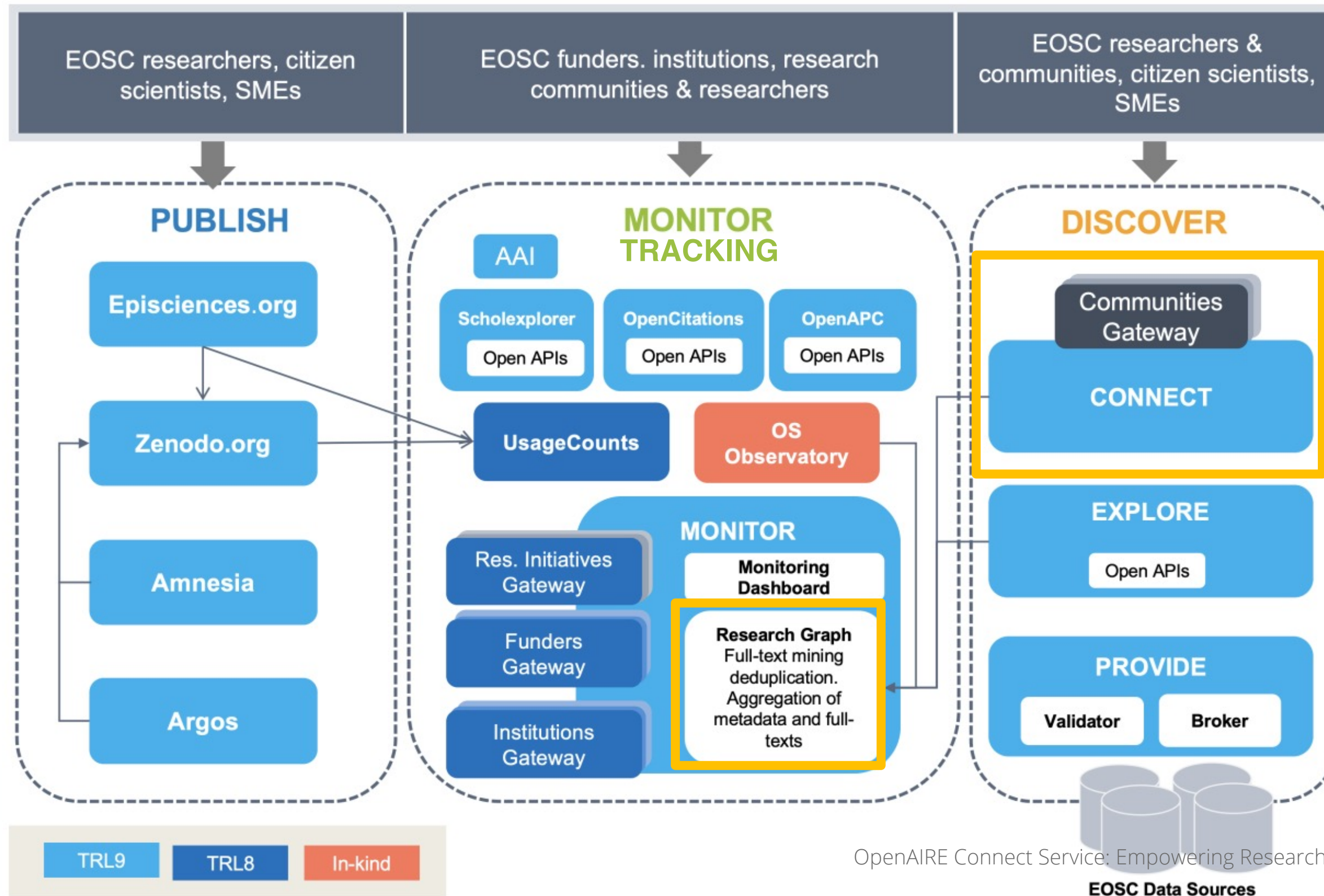


Alessia Bardi
ISTI - CNR



Empowering research communities

OpenAIRE Services

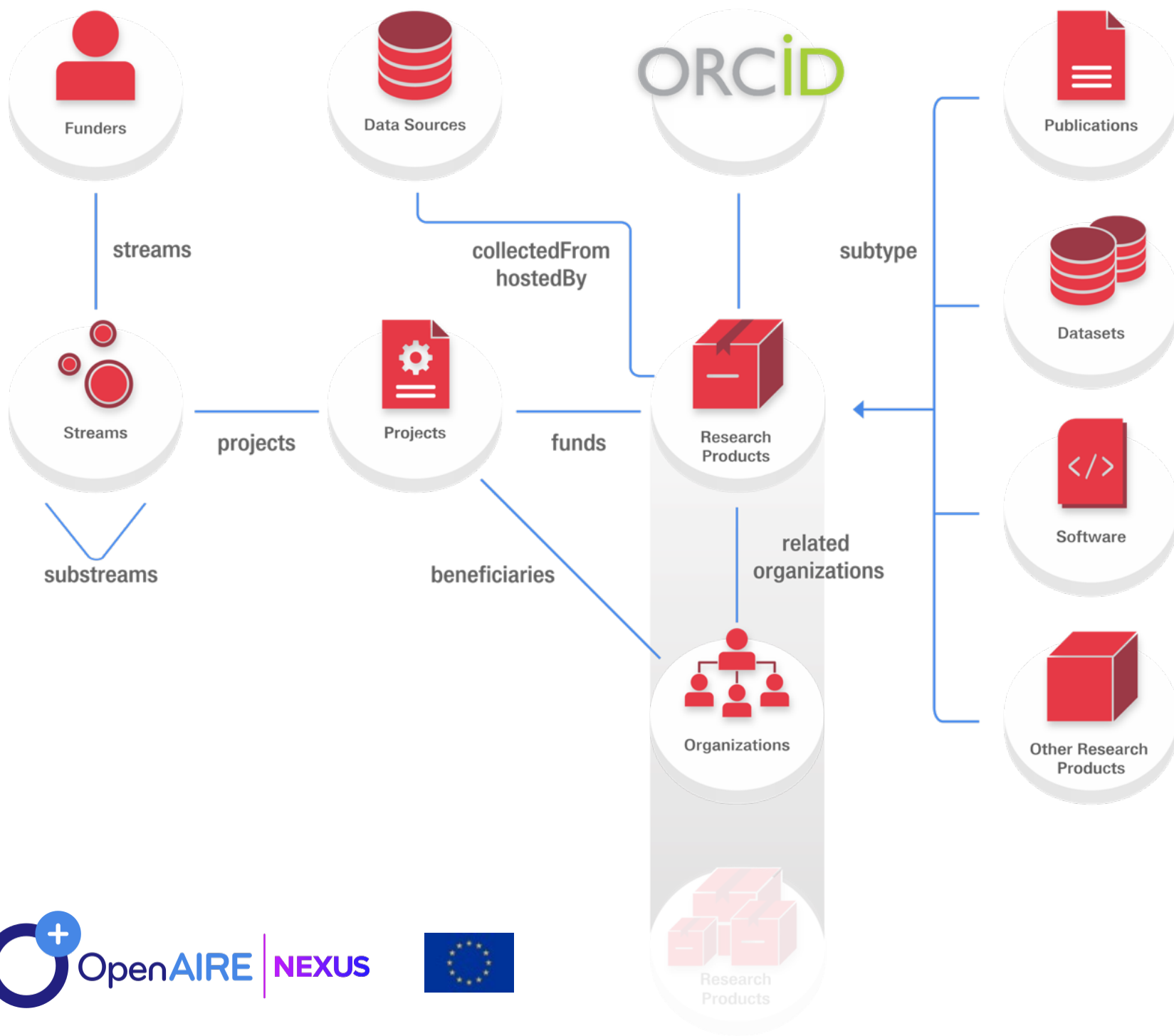


On-demand Open Research Gateways for research communities

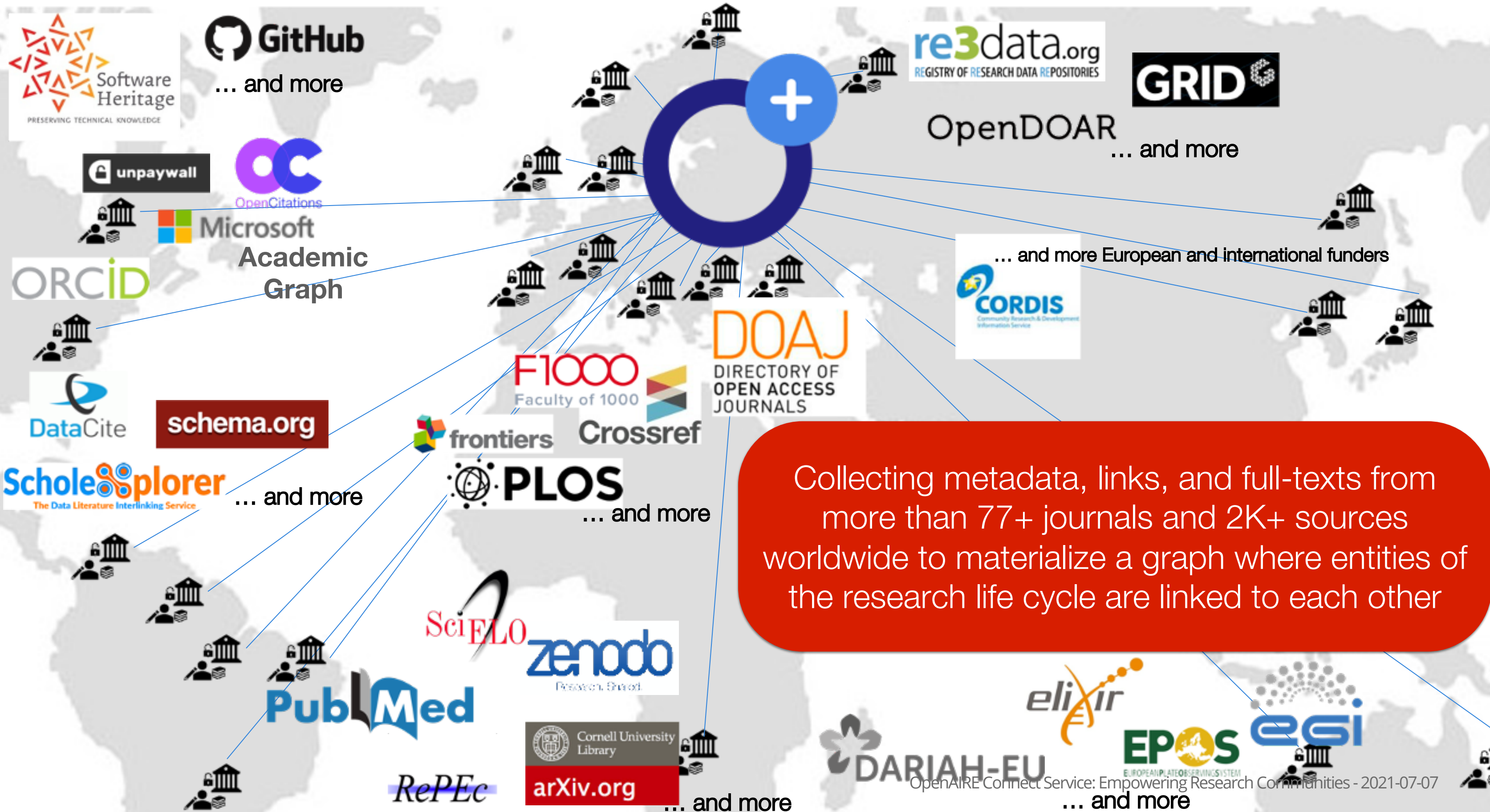
- It **lowers** the barriers that hinder the adoption of **Open Science publishing practices** in the research community
 - Discovery in the literature and data deluge
 - Dispersion of research products
 - Lack of community awareness
 - Lack of Open Science publishing services and tools
- A "community view" of the OpenAIRE Research Graph
 - Available via a web portal, API and dumps published on Zenodo
- An Open Science Toolkit: entry point to tools for the implementation of Open Science publishing practices



The OpenAIRE Research Graph



An open metadata research graph of interlinked scientific products, with Open Access information, linked to funding information and research communities



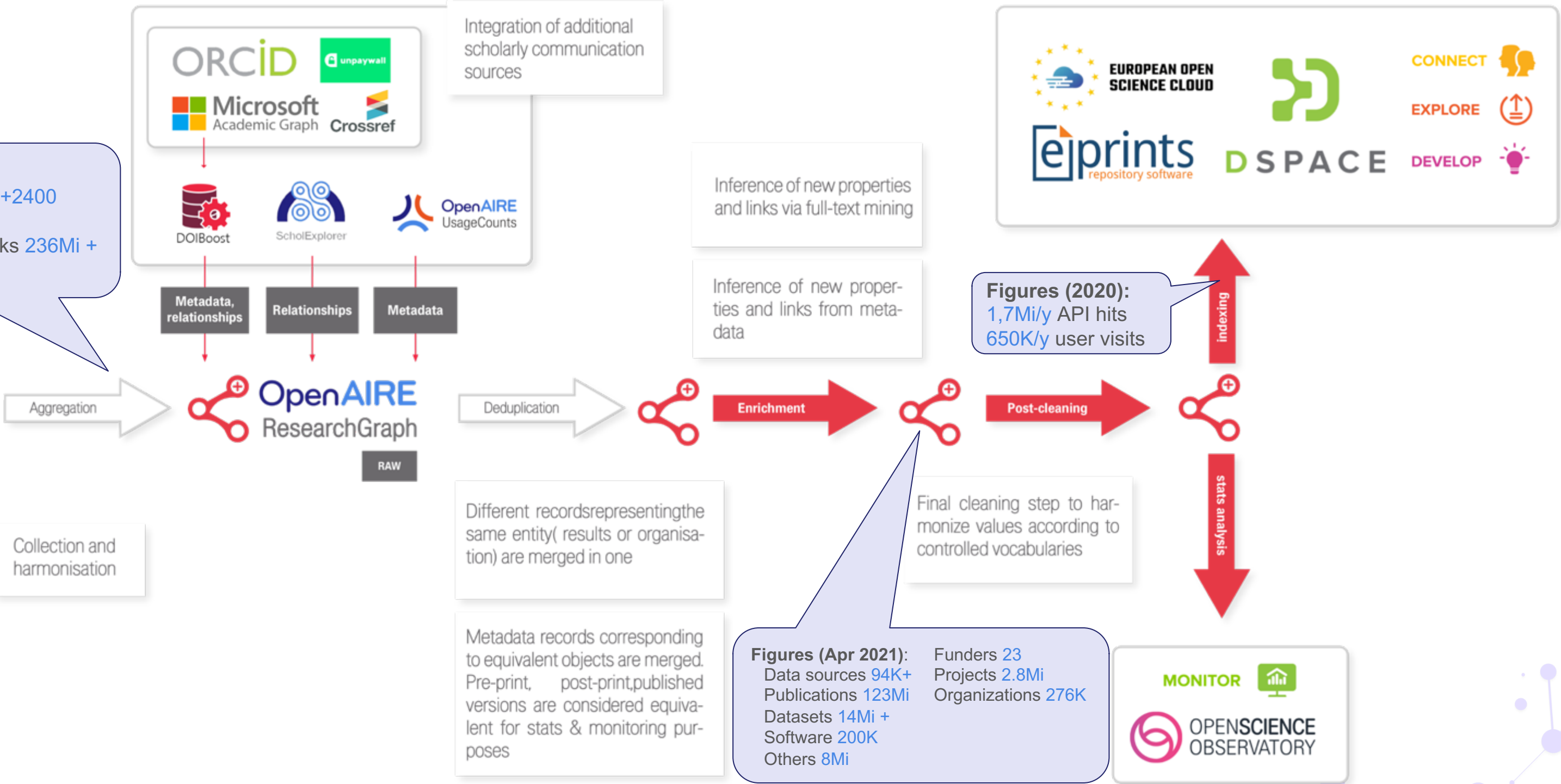
Collecting metadata, links, and full-texts from more than 77+ journals and 2K+ sources worldwide to materialize a graph where entities of the research life cycle are linked to each other

OpenAIRE Research Graph: the supply chain

Figures (Apr 2021):

- Direct data sources +2400
- Products +360Mi
- Harvested/mined links 236Mi +
- Full-texts 14.Mi+

Data sources



APIs integration with third-party services



The Graph as EOSC Resource Catalogue



Connecting Research and Researchers



CORDIS

Project Continues Report

Publications

Suggested publications from OpenAIRE (2 publications)

No.	Type	Title	Authors	Title of the Journal/Proc./Book	Date of Acceptance	DOI	Repository Link	Actions
1	Book/IN	Open Science Training Handbook	Sergio Berjillo, April Chyl		06/04/2018	10.5201/zenodo.121049 10.5201/zenodo.121049	OpenAIRE	X
2	Other	Project FOOTER Plus	Drinken, Helene		07/09/2017	10.5201/zenodo.881120 10.5201/zenodo.881120	OpenAIRE	X

Project publications (1 publications)

Accept the suggested publications from OpenAIRE and add

your project publications

Web Entry

Scopus

Example of new "Related Research Data" linking

Expanding the Scope of Molecular Wire Crystals Enabled by Three-Component Solid Solutions

Related Research Data



OpenAIRE
CONNECT:

An Open Science
toolkit for research
communities

Scientists of a research community
can explore all research products
and entities relative to their
community in one place

Portal customizable to
community needs

Discovery
Gateway

Bridging of
RIs and OS
publishing

Community
Customization

Statistics and
tracking

*An Open Science
Toolkit*



Community Gateway

Gateway configuration



Identify research products of the community



zenodo Search Upload Communities

January 14, 2021 Dataset Open Access

OpenAIRE Covid-19 publications, datasets, software and projects metadata.

Bardi, Alessia; Kuchma, Iryna; Pavone, Gina; Artini, Michele; Atzori, Claudio; Bäcker, Amelie; Baglioni, Miriam; Czerniak, Andreas; De Bonis, Michele; Dimitropoulos, Harry; Foufoulas, Ioannis; Horst, Marek; Iatropoulou, Katerina; Jacewicz, Przemyslaw; Kokogiannaki, Argiro; La Bruzzo, Sandro; Lazzeri, Emma; Löhden, Aenne; Manghi, Paolo; Mannocci, Andrea; Manola, Natalia; Ottonello, Enrico; Schirrwagen, Jochen

Data curator(s)
Bobrov, Evgeny; Truccolo, Ivana; Monteiro, Elizabete; Casalegno, Carlotta; Clary, Erin; Romanowski, Andrew

This dump provides access to the metadata records of publications, research data, software and projects that may be relevant to the Corona Virus Disease (COVID-19) fight. The dump contains records of the OpenAIRE COVID-19 Gateway (https://covid-19.openaire.eu/), identiGraph (https://explore.openaire.eu/), links between publications, datasets, sources world-wide, among which th Organization), BIPI Finder for COVID-19. The dump consists of a tar archive available at https://doi.org/10.5281/2

6,688 views 573 downloads

<https://doi.org/10.5281/zenodo.3980490>

zenodo Search Upload Communities

January 14, 2021 Dataset Open Access

OpenAIRE Research Graph: Dumps for research communities and initiatives.

Manghi, Paolo; Atzori, Claudio; Bardi, Alessia; Baglioni, Miriam; Schirrwagen, Jochen; Dimitropoulos, Harry; La Bruzzo, Sandro; Foufoulas, Ioannis; Löhden, Aenne; Bäcker, Amelie; Mannocci, Andrea; Horst, Marek; Czerniak, Andreas; Kiatropoulou, Katerina; Kokogiannaki, Argiro; Antonis, Ioannidis; Alexandros; Summan, Friedrich

This dataset contains dumps of the OpenAIRE Research communities and initiatives collaborating with OpenAIRE line. Each json is compliant to the schema available at C

352 views 172 downloads

<https://doi.org/10.5281/zenodo.4439644>



Scientists of a research community can explore all research products and entities relative to their community in one place

Discovery Gateway

Bridging of RIs and OS publishing

Portal customizable to community needs

Community Customization

Statistics and tracking

An Open Science Toolkit

Research community managers can fine-tune the criteria to include products of the OpenAIRE Research Graph in the Community Gateway

Community Gateway configuration: identifying products among those in the OpenAIRE Research Graph



Gateway curators

Keywords

Discipline-specific subject terms to be found in the metadata

Projects

From the 22 funders integrated in OpenAIRE

Data sources

E.g. thematic repositories, archives and journals

Zenodo communities

With research products relevant for the field

Organizations

Organizations in the field: we look for them in the affiliations



Researchers

Link

Link products in OpenAIRE, Crossref, Datacite, ORCID to the community, also in bulk

Propagation

If a community result is supplemented by another research product, then the latter is also added in the community gateway

Full-text mining

Links to projects

Affiliations

Document classification



OpenAIRE algorithms

Scientists of a research community can explore all research products and entities relative to their community in one place

Discovery Gateway

Portal customizable to community needs

Support services of research infrastructures (RIs) at depositing research products in Zenodo and make them available via the community gateway.

Bridging of RIs and OS publishing

Provide up-to-date information to RI repositories

Community Customization

Research community managers can fine-tune the criteria to include products of the OpenAIRE Research Graph in the Community Gateway

Statistics and tracking

An Open Science Toolkit

Scientists of a research community can explore all research products and entities relative to their community in one place

Discovery Gateway

Portal customizable to community needs

Support services of research infrastructures (RIs) at depositing research products in Zenodo and make them available via the community gateway.

Bridging of RIs and OS publishing

Provide up-to-date information to RI repositories

Community Customization

Research community managers can fine-tune the criteria to include products of the OpenAIRE Research Graph in the Community Gateway

Statistics and tracking

Reporting to funders, development of Open Science scientific reward strategies, tracking uptake of Open Science practices

An Open Science Toolkit



Takeaway

- OpenAIRE CONNECT delivers **configurable Open Research Gateways** for research communities
- It **lowers** the barriers that hinder the adoption of **Open Science publishing practices** in the research community
- It is the service by which OpenAIRE supports **community building, strengthening and empowering**

connect.openaire.eu





@openaire_eu
#OpenAIRE-Nexus

THANK YOU

Alessia Bardi
alessia.bardi@isti.cnr.it

