



**CS<sup>3</sup>  
MESH<sup>4</sup>  
EOSC**

**Connecting European Data**



# How to join the ScienceMesh?

Daniel Müller, WWU Münster

28 Jan 2021



CS3MESH4EOSC has received funding from the European Union's Horizon 2020 Research and Innovation programme under **Grant Agreement No. 863353**.



**CS<sup>3</sup>MESH<sup>4</sup>EOSC**

Connecting European Data

# Why join the ScienceMesh?

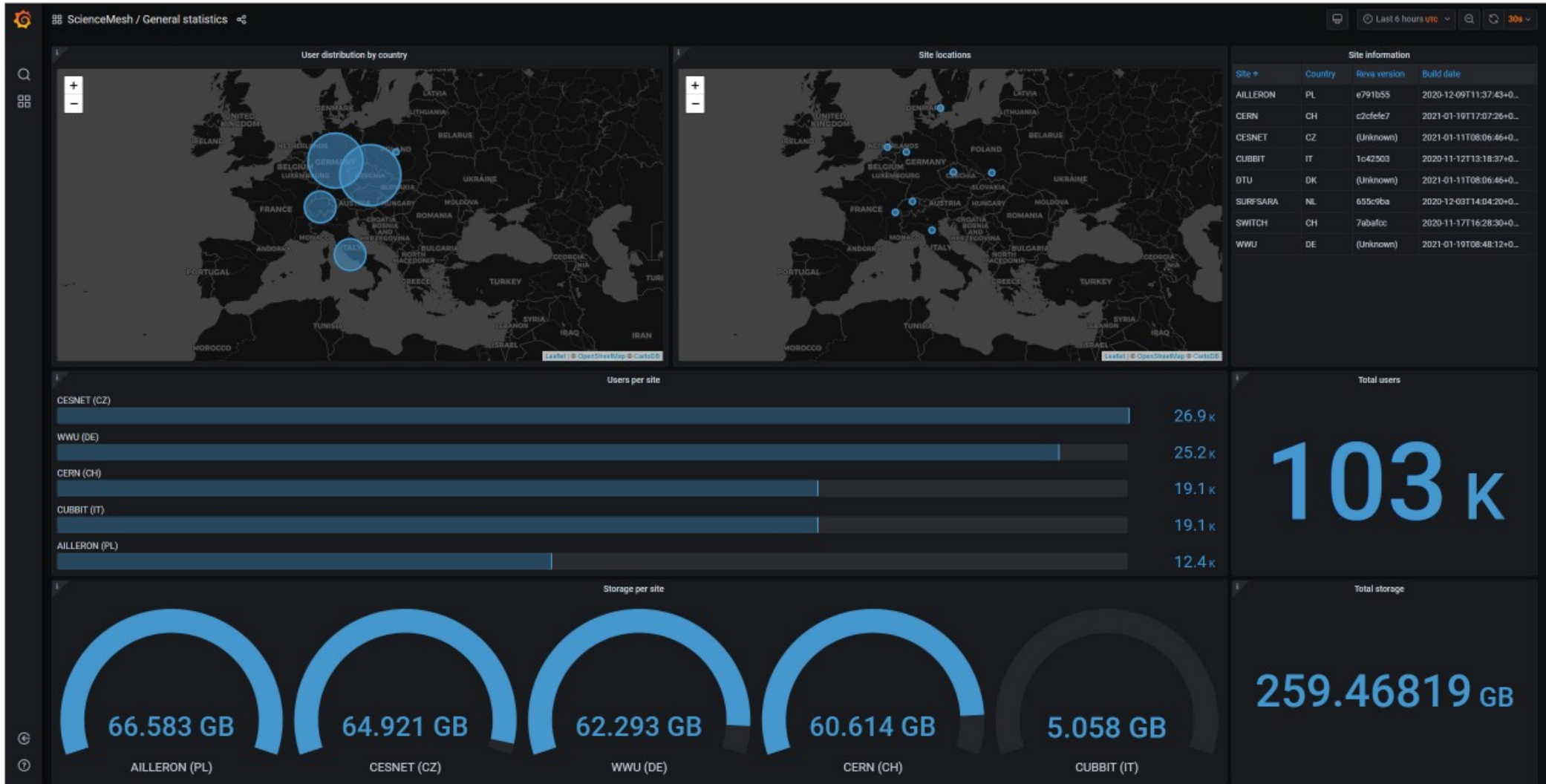
- Help us develop this exciting project

- Help us develop this exciting project
- Bring in your own ideas



- Help us develop this exciting project
- Bring in your own ideas
- Become part of a large community

- Help us develop this exciting project
- Bring in your own ideas
- Become part of a large community
- Appear on our maps & statistics dashboard
  - <https://sciencemesh-test.uni-muenster.de/grafana/>





# How to join the ScienceMesh?



- You need to be running one of the supported CS3 platforms:

- You need to be running one of the supported CS3 platforms:
  - ownCloud
  - Nextcloud
  - Seafile



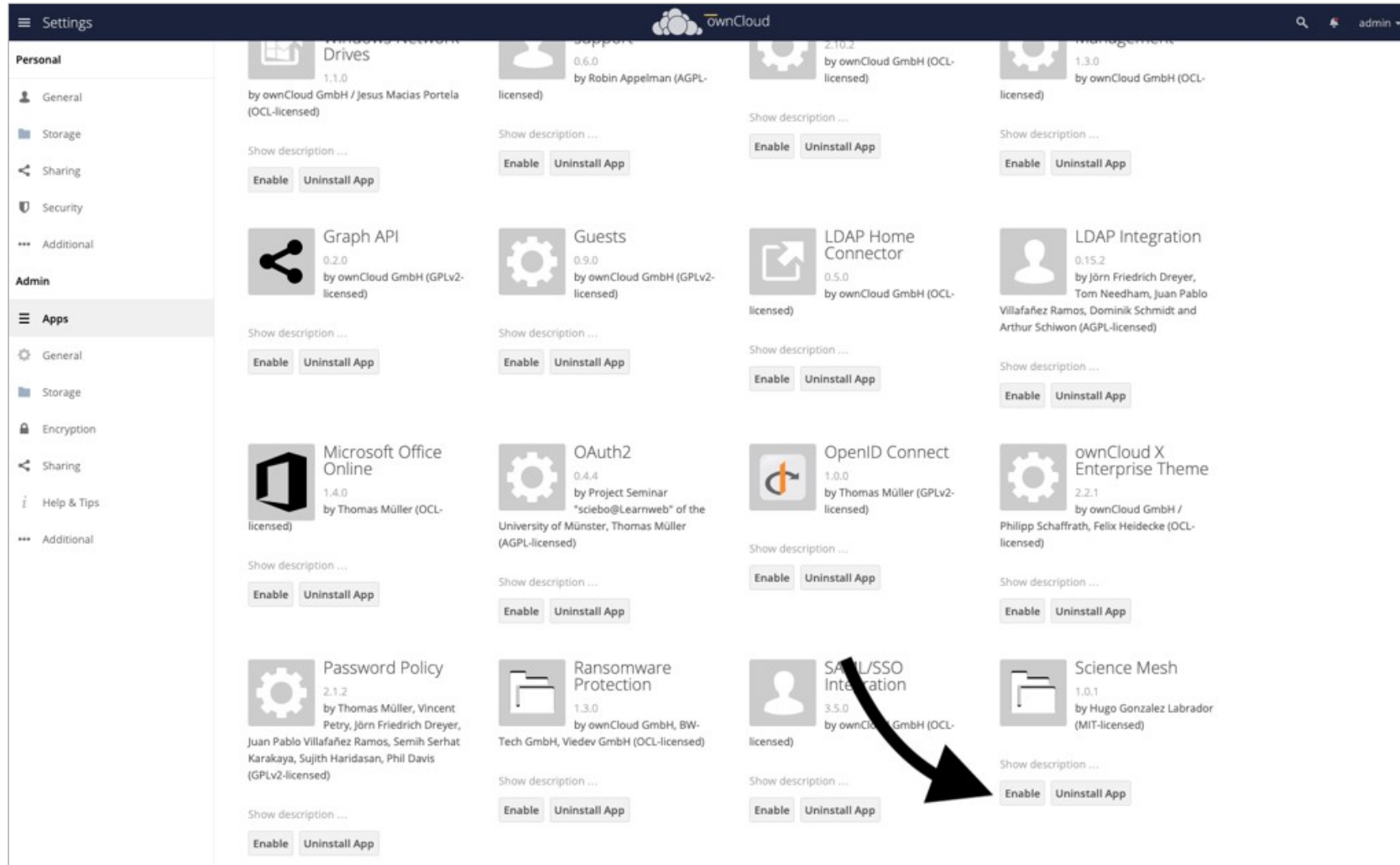
- Install the corresponding *web application* and the *interoperability platform (IOP)*

- Install the corresponding *web application* and the *interoperability platform (IOP)*
- Detailed tutorials can be found here:
  - **ownCloud:**  
<https://developer.sciencemesh.io/docs/how-to-join-sciencemesh/owncloud/>
  - **Nextcloud:**  
<https://developer.sciencemesh.io/docs/how-to-join-sciencemesh/nextcloud/>

- Download the web application for your CS3 platform:
  - **ownCloud:** <https://github.com/sciencemesh/oc-sciencemesh/releases>
  - **Nextcloud:** <https://github.com/sciencemesh/nc-sciencemesh/releases>

- Download the web application for your CS3 platform:
  - **ownCloud:** <https://github.com/sciencemesh/oc-sciencemesh/releases>
  - **Nextcloud:** <https://github.com/sciencemesh/nc-sciencemesh/releases>
- Unpack the contents into the *apps* directory of ownCloud/Nextcloud

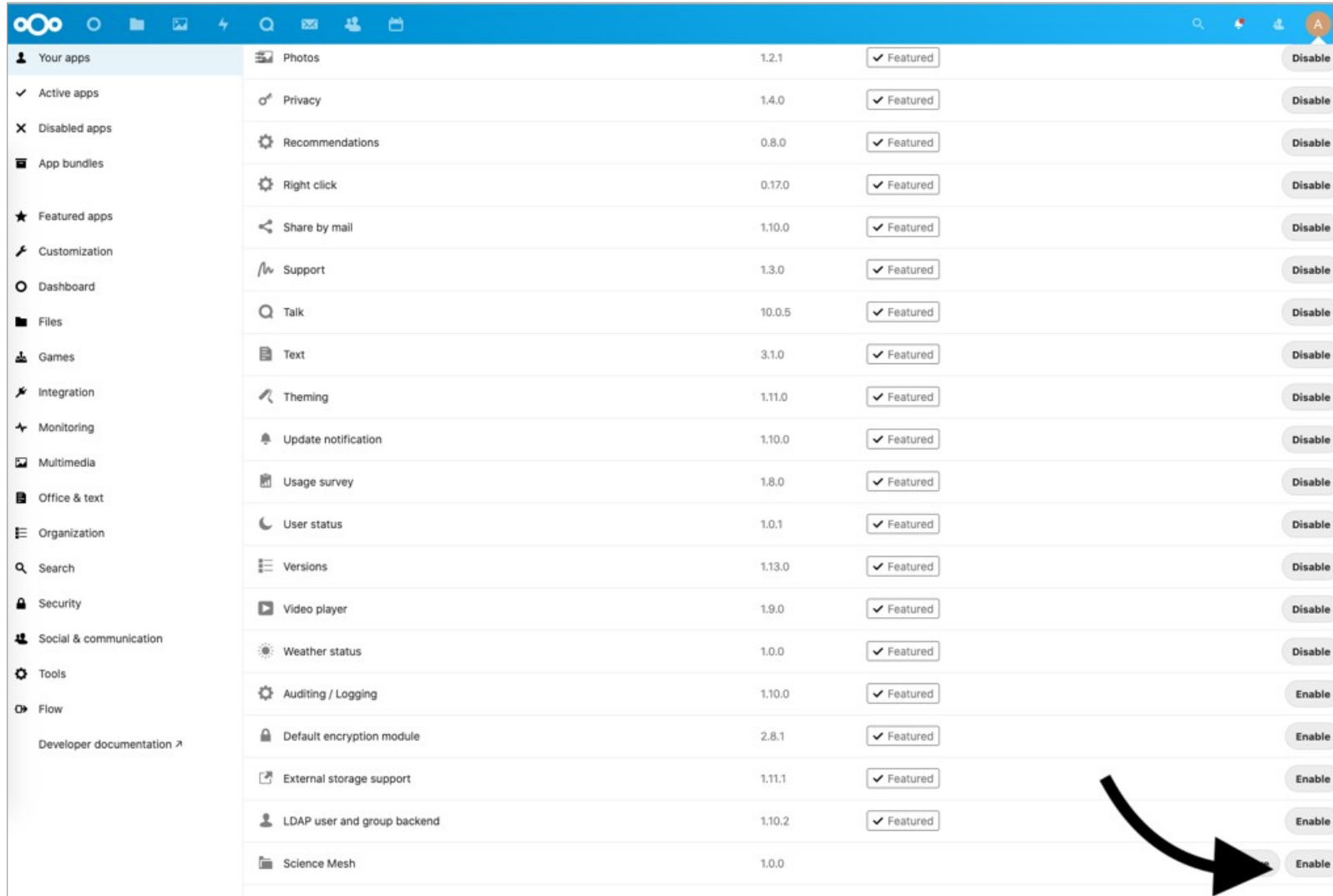
- Download the web application for your CS3 platform:
  - **ownCloud:** <https://github.com/sciencemesh/oc-sciencemesh/releases>
  - **Nextcloud:** <https://github.com/sciencemesh/nc-sciencemesh/releases>
- Unpack the contents into the *apps* directory of ownCloud/Nextcloud
- Enable the ScienceMesh application...



The screenshot displays the ownCloud Admin interface with a sidebar on the left containing sections for Personal, Admin, and Apps. The main area shows a grid of 16 web applications, each with an icon, name, version, and developer information. Each application card includes a 'Show description ...' link and 'Enable' and 'Uninstall App' buttons. A black arrow points to the 'Science Mesh' application card.

Application Name	Version	Developer	License
Drives	1.1.0	by ownCloud GmbH / Jesus Macias Portela	(OCL-licensed)
Support	0.6.0	by Robin Appelman	(AGPL-licensed)
2-Step Verification	2.10.2	by ownCloud GmbH	(OCL-licensed)
Management Console	1.3.0	by ownCloud GmbH	(OCL-licensed)
Graph API	0.2.0	by ownCloud GmbH	(GPLv2-licensed)
Guests	0.9.0	by ownCloud GmbH	(GPLv2-licensed)
LDAP Home Connector	0.5.0	by ownCloud GmbH	(OCL-licensed)
LDAP Integration	0.15.2	by Jörn Friedrich Dreyer, Tom Needham, Juan Pablo Villafañez Ramos, Dominik Schmidt and Arthur Schiwon	(AGPL-licensed)
Microsoft Office Online	1.4.0	by Thomas Müller	(OCL-licensed)
OAuth2	0.4.4	by Project Seminar "sciebo@Learnweb" of the University of Münster, Thomas Müller	(AGPL-licensed)
OpenID Connect	1.0.0	by Thomas Müller	(GPLv2-licensed)
ownCloud X Enterprise Theme	2.2.1	by ownCloud GmbH / Philipp Schaffrath, Felix Heidecke	(OCL-licensed)
Password Policy	2.1.2	by Thomas Müller, Vincent Petry, Jörn Friedrich Dreyer, Juan Pablo Villafañez Ramos, Semih Serhat Karakaya, Sujith Haridasan, Phil Davis	(GPLv2-licensed)
Ransomware Protection	1.3.0	by ownCloud GmbH, BW-Tech GmbH, Viedev GmbH	(OCL-licensed)
SAML/SSO Integration	3.5.0	by ownCloud GmbH	(OCL-licensed)
Science Mesh	1.0.1	by Hugo Gonzalez Labrador	(MIT-licensed)





App Name	Version	Status
Photos	1.2.1	Disabled
Privacy	1.4.0	Disabled
Recommendations	0.8.0	Disabled
Right click	0.17.0	Disabled
Share by mail	1.10.0	Disabled
Support	1.3.0	Disabled
Talk	10.0.5	Disabled
Text	3.1.0	Disabled
Theming	1.11.0	Disabled
Update notification	1.10.0	Disabled
Usage survey	1.8.0	Disabled
User status	1.0.1	Disabled
Versions	1.13.0	Disabled
Video player	1.9.0	Disabled
Weather status	1.0.0	Disabled
Auditing / Logging	1.10.0	Enabled
Default encryption module	2.8.1	Enabled
External storage support	1.11.1	Enabled
LDAP user and group backend	1.10.2	Enabled
Science Mesh	1.0.0	Enabled

- Download the web application for your CS3 platform:
  - **ownCloud:** <https://github.com/sciencemesh/oc-sciencemesh/releases>
  - **Nextcloud:** <https://github.com/sciencemesh/nc-sciencemesh/releases>
- Unpack the contents into the *apps* directory of ownCloud/Nextcloud
- Enable the ScienceMesh application...
- ...and configure it

☰ Settings

Personal	ScienceMesh
<ul style="list-style-type: none"> <li><span>👤</span> General</li> <li><span>📁</span> Storage</li> <li><span>🔗</span> Sharing</li> <li><span>🛡️</span> Security</li> <li><span>⋮</span> Additional</li> </ul>	<p>Settings</p> <p>Site Name <input type="text" value="CERN"/></p> <p>Site URL <input type="text" value="http://localhost"/></p> <p>Country Code <input type="text" value="CH"/></p> <p>Hostname <input type="text" value="localhost"/></p> <p>IOP Service Address <input type="text" value="http://&lt;IOP URL&gt;"/></p> <p>Number of users <input type="text" value="0"/></p> <p>Number of files <input type="text" value="0"/></p> <p>Storage volume (in bytes) <input type="text" value="0"/></p> <p style="text-align: right;"><span>Save</span></p>
Admin	
<ul style="list-style-type: none"> <li><span>☰</span> Apps</li> <li><span>⚙️</span> General</li> <li><span>📁</span> Storage</li> <li><span>🛡️</span> Encryption</li> <li><span>🔗</span> Sharing</li> <li><span>ℹ️</span> Help &amp; Tips</li> <li style="background-color: #d9d9d9;"><span>⋮</span> Additional</li> </ul>	

🔍

Personal	ScienceMesh
<ul style="list-style-type: none"> <li><span>👤</span> Personal info</li> <li><span>🛡️</span> Security</li> <li><span>🔗</span> Activity</li> <li><span>📱</span> Mobile &amp; desktop</li> <li><span>♿</span> Accessibility</li> <li><span>🔗</span> Sharing</li> <li><span>📁</span> Flow</li> <li><span>🔒</span> Privacy</li> </ul>	<p>Settings</p> <p>Site Name <input type="text" value="CERN"/></p> <p>Site URL <input type="text" value="http://cernbox.cern.ch"/></p> <p>Country Code <input type="text" value="CH"/></p> <p>Hostname <input type="text" value="cernbox.cern.ch"/></p> <p>IOP Service Address <input type="text" value="http://localhost:5550"/></p> <p>Number of users <input type="text" value="37000"/></p> <p>Number of files <input type="text" value="1600000000"/></p> <p>Storage volume (in bytes) <input type="text" value="1200000000000"/></p> <p style="text-align: right;"><span>Save</span></p>
Administration	
<ul style="list-style-type: none"> <li><span>☰</span> Overview</li> <li><span>🗨️</span> Support</li> <li><span>⚙️</span> Basic settings</li> <li><span>🔗</span> Sharing</li> <li><span>🛡️</span> Security</li> <li><span>🎨</span> Theming</li> <li><span>👤</span> Groupware</li> <li><span>🔗</span> Activity</li> <li><span>📁</span> Flow</li> <li><span>📄</span> Collabora Online</li> <li><span>🔗</span> Built-in CODE Server</li> <li><span>📊</span> Usage survey</li> <li><span>☰</span> Logging</li> <li><span>⚙️</span> System</li> <li style="background-color: #0070c0; color: white;"><span>⚙️</span> Additional settings</li> </ul>	

- Install the IOP (InterOperability Platform), also known as *Reva*



- Install the IOP (InterOperability Platform), also known as *Reva*
- Download the latest version of the *revad* binary from the Github releases page:
  - <https://github.com/cs3org/revad/releases>



- Create the Reva configuration file:

```
[http]
address = "0.0.0.0:5550"
[http.services.metrics]
metrics_data_driver_type = "xcloud"
metrics_record_interval = 5000
xcloud_instance="http://localhost"
xcloud_interval=5
xcloud_catalog='https://sciencemesh-test.uni-muenster.de/
  api/mentix/sites?action=register'
[http.services.prometheus]
```

- Create the Reva configuration file:

```
[http]
address = "0.0.0.0:5550"
[http.services.metrics]
metrics_data_driver_type = "xcloud"
metrics_record_interval = 5000
xcloud_instance="http://localhost"
xcloud_interval=5
xcloud_catalog='https://sciencemesh-test.uni-muenster.de/
  api/mentix/sites?action=register'
[http.services.prometheus]
```

- Create the Reva configuration file:

```
[http]
address = "0.0.0.0:5550"
[http.services.metrics]
metrics_data_driver_type = "xcloud"
metrics_record_interval = 5000
xcloud_instance="http://localhost"
xcloud_interval=5
xcloud_catalog='https://sciencemesh-test.uni-muenster.de/
  api/mentix/sites?action=register'
[http.services.prometheus]
```



- Finally, launch the Reva daemon:

```
revad -c metrics.toml
```



# What's next?

- The ScienceMesh administrators will check and verify your registration



- The ScienceMesh administrators will check and verify your registration
- Your site will be authorized and come part of the ScienceMesh



- The ScienceMesh administrators will check and verify your registration
- Your site will be authorized and come part of the ScienceMesh
- Your site will automatically appear on our dashboard



Need help?

# Just contact us!

- <https://gitter.im/cs3org/REVA>
- <https://cs3mesh4eosc.eu/contact>





**CS<sup>3</sup>  
MESH<sup>4</sup>  
EOSC**

**Connecting European Data**

**Thank you!**  
Discover more on...

 [cs3mesh4eosc.eu](https://cs3mesh4eosc.eu)

 [company/cs3mesh4eosc](https://www.linkedin.com/company/cs3mesh4eosc)

 [@cs3mesh4eosc](https://twitter.com/cs3mesh4eosc)



CS3MESH4EOSC has received funding from the European Union's Horizon 2020 Research and Innovation programme under **Grant Agreement No. 863353**.