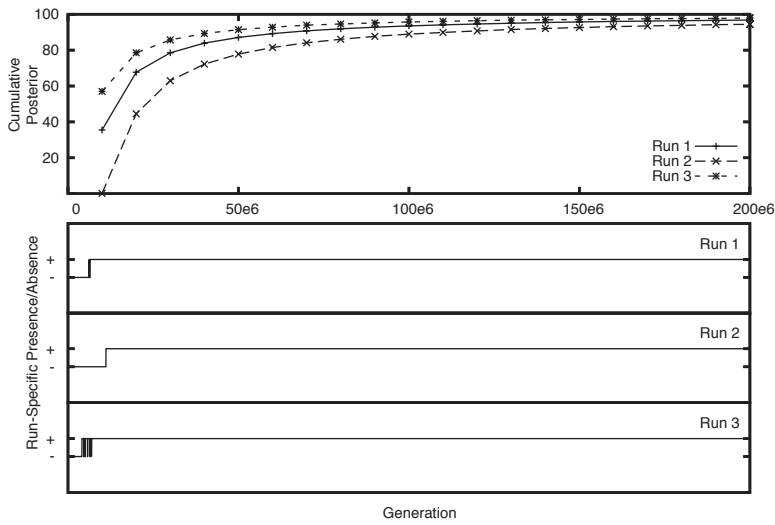
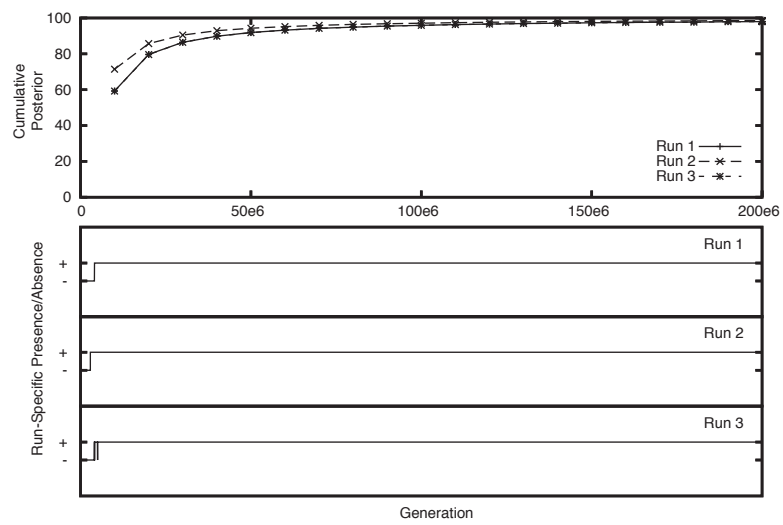


Figure S5. Results of AWTY analyses of three $2 \cdot 10^8$ generation runs of *BEAST on the complete character matrix. Shown are the cumulative posterior probabilities and presence/absence tracks for the five core clades of New World nine-primaried oscines. See text for run settings and clade definitions.

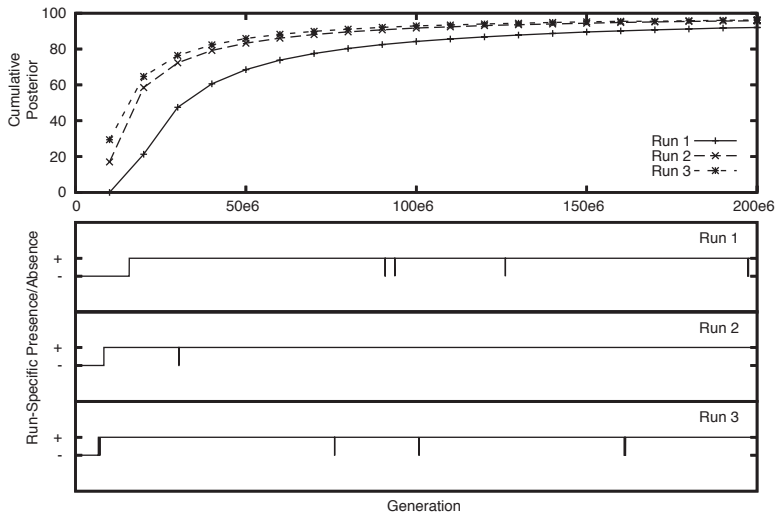
A) Emberizidae+Passerellidae



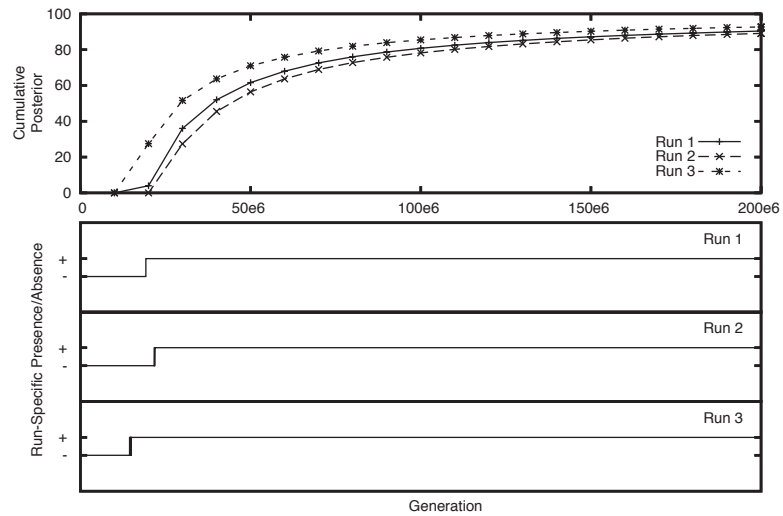
B) Parulidae



C) Icteridae



D) Cardinalidae



E) Thraupidae

