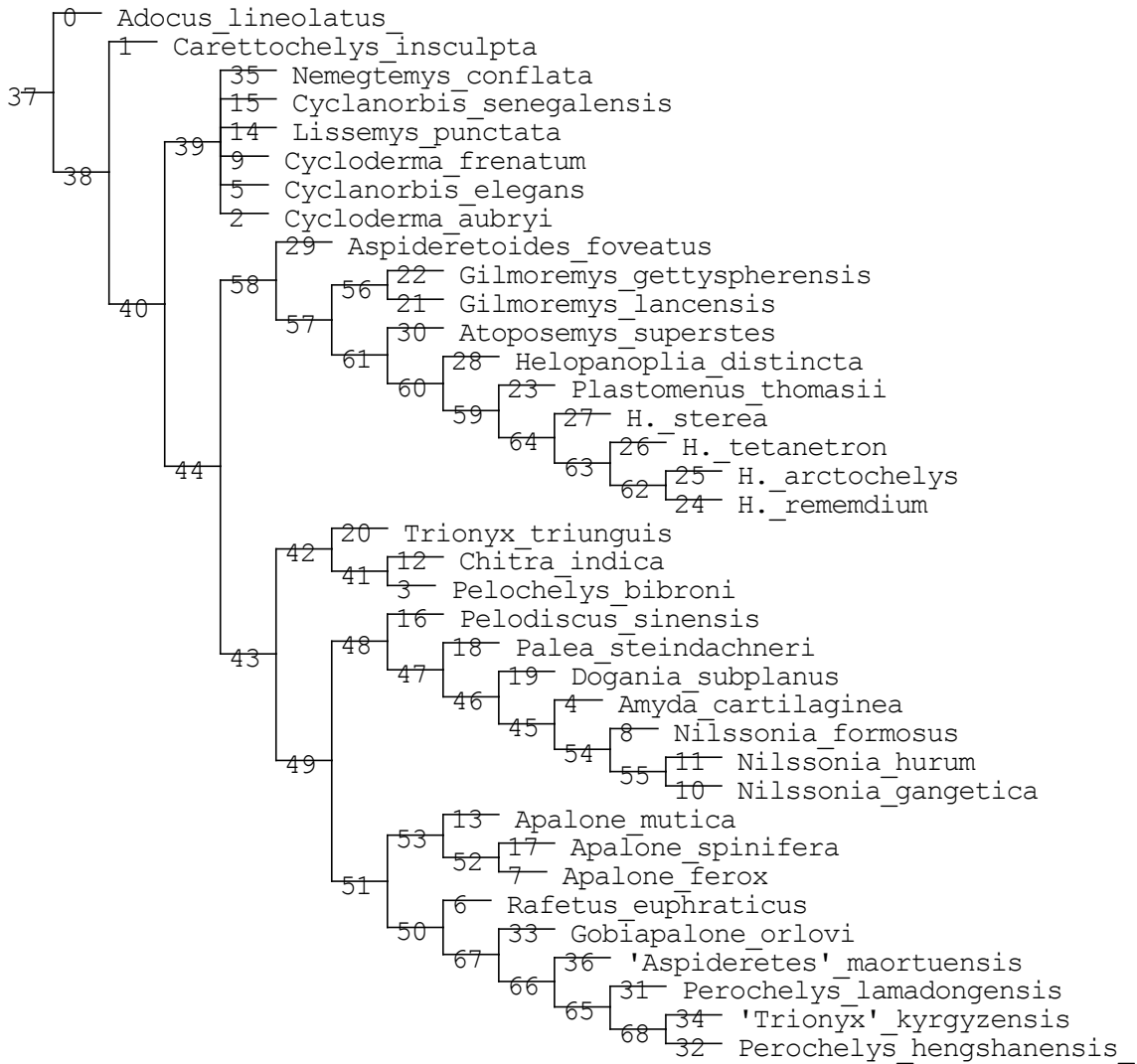


Strict consensus of 6 trees (0 taxa excluded)



Synapomorphies common to 6 trees
(Node numbers refer to nodes in consensus)

Adocus_lineolatus :
All trees:
No autapomorphies:

Carettochelys_insculpta :
All trees:
Char. 17: 2 --> 3
Char. 21: 1 --> 2
Char. 32: 1 --> 2
Char. 37: 2 --> 1
Char. 65: 1 --> 2

Cycloderma_aubryi :
Some trees:
Char. 13: 1 --> 2
Char. 30: 1 --> 2
Char. 46: 1 --> 2

Pelochelys_bibroni :
All trees:
Char. 35: 1 --> 2

Amyda_cartilaginea :
All trees:
Char. 40: 3 --> 2
Char. 57: 1 --> 2

Cyclanorbis_elegans :
All trees:
Char. 7: 1 --> 0
Char. 8: 1 --> 0
Char. 10: 1 --> 0
Char. 22: 1 --> 2
Char. 23: 1 --> 2
Char. 31: 1 --> 2
Char. 52: 1 --> 2
Char. 55: 1 --> 2
Char. 56: 1 --> 2
Char. 92: 1 --> 0

Rafetus_euphraticus :
All trees:
Char. 32: 1 --> 2
Char. 57: 1 --> 2
Char. 59: 2 --> 3
Char. 67: 1 --> 2

Apalone_ferox :
All trees:
Char. 59: 2 --> 3
Char. 67: 1 --> 2

Nilssonina_formosus :
All trees:
Char. 0: 3 --> 2
Char. 21: 2 --> 1
Char. 27: 1 --> 2

Char. 28: 1 --> 2
Char. 64: 1 --> 2

Cycloderma_frenatum :

All trees:
Char. 44: 1 --> 2
Char. 45: 1 --> 2
Char. 52: 1 --> 2
Char. 55: 1 --> 2

Nilssonia_gangetica :

All trees:
Char. 52: 3 --> 2
Char. 59: 3 --> 2

Nilssonia_hurum :

All trees:
Char. 30: 2 --> 3
Char. 92: 0 --> 1

Chitra_indica :

All trees:
Char. 2: 2 --> 3
Char. 19: 2 --> 1
Char. 26: 1 --> 2
Char. 29: 1 --> 2
Char. 53: 1 --> 0
Char. 54: 1 --> 0
Char. 64: 1 --> 2

Apalone_mutica :

All trees:
Char. 0: 3 --> 4
Char. 27: 1 --> 2
Char. 52: 3 --> 2

Lissemys_punctata :

All trees:
Char. 5: 1 --> 2
Char. 13: 1 --> 2
Char. 79: 0 --> 1
Char. 93: 0 --> 2

Cyclanorbis_senegalensis :

All trees:
Char. 93: 0 --> 2
Some trees:
Char. 0: 2 --> 3
Char. 5: 1 --> 2
Char. 11: 0 --> 1
Char. 15: 2 --> 3
Char. 17: 2 --> 4
Char. 30: 1 --> 2
Char. 33: 2 --> 1
Char. 80: 1 --> 2

Pelodiscus_sinensis :

All trees:
Char. 0: 3 --> 4
Char. 7: 0 --> 1

Char. 8: 0 --> 1
Char. 16: 1 --> 3
Char. 27: 1 --> 2
Char. 37: 1 --> 2
Char. 49: 0 --> 2

Apalone_spinifera :
All trees:
No autapomorphies:

Palea_steindachneri :
All trees:
Char. 0: 3 --> 2
Char. 19: 2 --> 1
Char. 28: 1 --> 2
Char. 48: 1 --> 2
Char. 50: 1 --> 2
Char. 55: 2 --> 1

Dogania_subplanus :
All trees:
Char. 0: 3 --> 4
Char. 16: 1 --> 2
Char. 19: 2 --> 3
Char. 41: 1 --> 2
Char. 52: 3 --> 2
Char. 93: 0 --> 2

Trionyx_triunguis :
All trees:
Char. 42: 1 --> 2
Char. 54: 1 --> 2
Char. 56: 1 --> 2

Gilmoremys_lancensis :
All trees:
Char. 8: 0 --> 1
Char. 70: 1 --> 0

Gilmoremys_gettyspherensis :
All trees:
Char. 15: 2 --> 1
Char. 17: 2 --> 1

Plastomenus_thomasii :
All trees:
Char. 80: 1 --> 2
Char. 93: 1 --> 0
Char. 94: 0 --> 1

H._rememdium :
All trees:
Char. 93: 2 --> 0

H._arctochelys :
All trees:
Char. 74: 0 --> 1
Char. 75: 0 --> 1
Char. 79: 0 --> 1

H._tetanetron :
All trees:
Char. 13: 2 --> 1
Char. 86: 1 --> 0

H._sterea :
All trees:
Char. 0: 4 --> 3
Char. 79: 0 --> 1

Helopanoplia_distincta :
All trees:
Char. 70: 1 --> 0
Char. 79: 0 --> 1

Aspideretoides_foveatus :
All trees:
Char. 30: 3 --> 2
Char. 32: 1 --> 2

Atoposemys_superstes :
All trees:
Char. 24: 1 --> 2
Char. 71: 0 --> 1

Perochelys_lamadongensis :
All trees:
No autapomorphies:

Perochelys_hengshanensis_ :
All trees:
No autapomorphies:

Gobiapalone_orlovi :
All trees:
Char. 54: 1 --> 2

'Trionyx'_kyrgyzensis :
All trees:
No autapomorphies:

Nemegtemys_conflata :
All trees:
No autapomorphies:

'Aspideretes'_maortuensis :
All trees:
Char. 18: 3 --> 2

Node 38 :
All trees:
No synapomorphies

Node 39 :
All trees:
Char. 12: 1 --> 2
Some trees:
Char. 14: 1 --> 2
Char. 52: 3 --> 1
Char. 67: 1 --> 2

Node 40 :

All trees:

Char. 4: 2 --> 34
Char. 15: 3 --> 2
Char. 33: 1 --> 2
Char. 40: 1 --> 3
Char. 42: 2 --> 1
Char. 68: 2 --> 1
Char. 76: 1 --> 0
Char. 86: 1 --> 0
Char. 87: 0 --> 1
Char. 91: 0 --> 1

Node 41 :

All trees:

Char. 17: 2 --> 1
Char. 28: 1 --> 2
Char. 30: 3 --> 1
Char. 33: 2 --> 1
Char. 40: 3 --> 2
Char. 47: 1 --> 2
Char. 57: 1 --> 2
Char. 58: 1 --> 2
Char. 59: 2 --> 3
Char. 61: 1 --> 2
Char. 68: 1 --> 2

Node 42 :

All trees:

Char. 90: 1 --> 0

Node 43 :

All trees:

Char. 3: 1 --> 2
Char. 19: 1 --> 2
Char. 37: 2 --> 1
Char. 78: 1 --> 0
Char. 80: 1 --> 2
Char. 88: 1 --> 0

Node 44 :

All trees:

Char. 0: 2 --> 3
Char. 30: 1 --> 3

Node 45 :

All trees:

Char. 24: 2 --> 1
Char. 30: 3 --> 2
Char. 38: 2 --> 1

Node 46 :

All trees:

Char. 59: 2 --> 3
Char. 63: 1 --> 2

Node 47 :

All trees:

No synapomorphies

Node 48 :
All trees:
Char. 21: 1 --> 3
Char. 43: 1 --> 2

Node 49 :
All trees:
No synapomorphies

Node 50 :
All trees:
Char. 10: 1 --> 0
Char. 30: 3 --> 2

Node 51 :
All trees:
Char. 6: 1 --> 2
Char. 33: 2 --> 1
Char. 53: 1 --> 2

Node 52 :
All trees:
No synapomorphies

Node 53 :
All trees:
Char. 16: 1 --> 3
Char. 26: 1 --> 2
Char. 80: 2 --> 1

Node 54 :
All trees:
Char. 19: 2 --> 1
Char. 21: 3 --> 2
Char. 49: 0 --> 1

Node 55 :
All trees:
Char. 3: 2 --> 1
Char. 16: 1 --> 2

Node 56 :
All trees:
Char. 80: 1 --> 2
Char. 94: 0 --> 1

Node 57 :
All trees:
Char. 84: 0 --> 1

Node 58 :
All trees:
Char. 0: 3 --> 4
Char. 70: 0 --> 1
Char. 77: 0 --> 1

Node 59 :
All trees:
Char. 22: 2 --> 1

Node 60 :
All trees:
Char. 14: 1 --> 2
Char. 23: 2 --> 1
Char. 76: 0 --> 1
Char. 92: 0 --> 1

Node 61 :
All trees:
Char. 73: 0 --> 1
Char. 93: 0 --> 1

Node 62 :
All trees:
Char. 72: 0 --> 1

Node 63 :
All trees:
Char. 71: 0 --> 1

Node 64 :
All trees:
Char. 7: 0 --> 1
Char. 78: 1 --> 2
Char. 93: 1 --> 2

Node 65 :
All trees:
Char. 24: 1 --> 2

Node 66 :
All trees:
Char. 9: 1 --> 0
Char. 17: 2 --> 0
Char. 19: 2 --> 3
Char. 89: 1 --> 0
Char. 90: 1 --> 0

Node 67 :
All trees:
Char. 0: 3 --> 4

Node 68 :
All trees:
No synapomorphies

Time 0.06 secs.