



Dutch involvement in the ELIXIR data management project “CONVERGE”



BioSB conference, June 16 2021

[Mijke Jetten](#), Celia van Gelder, Rob Hooft

DTL/Health-RI, mijke.jetten@dtls.nl

ELIXIR-Converge has received funding from the European Union's Horizon 2020 Research and Innovation programme under grant agreement No 871075.

www.elixir-europe.org/converge

Outline

The ELIXIR-CONVERGE context provides an excellent mechanism to connect data management and stewardship related activities in the Netherlands to activities at the European level, which will benefit both parties

- Introduction: ELIXIR-CONVERGE project
- Work packages with ELIXIR-NL involvement

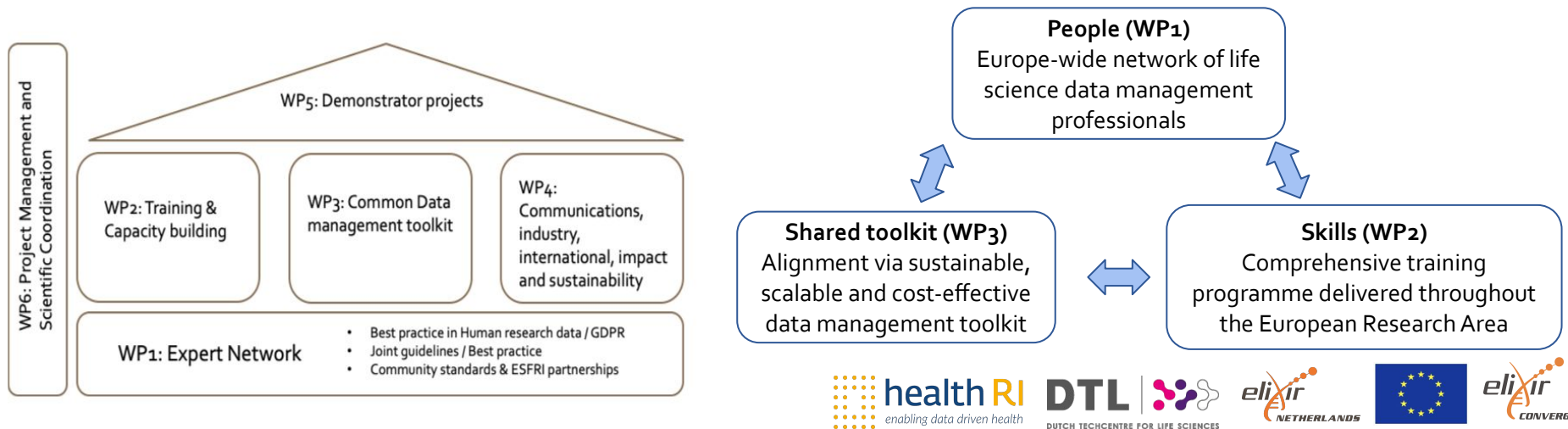
Link to presentation:

<https://doi.org/10.5281/zenodo.4963901>

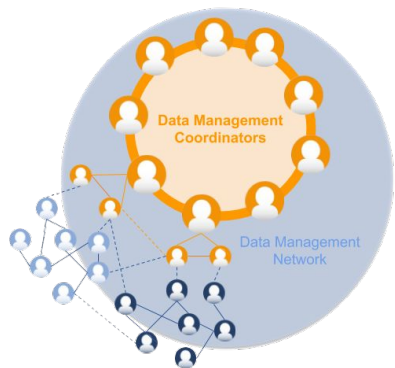
Connect and align ELIXIR Nodes to deliver sustainable FAIR life sciences data management services

ELIXIR-CONVERGE Objectives:

1. To develop a model for transnational life sciences data management support
2. To strengthen Europe's data management capacity through a comprehensive training programme
3. To align national data management standards and services through a data management toolkit
4. To align national investments to drive local impact and the global influence of ELIXIR



WP1: People: Expert network & scientific best practices



- [Data Management Coordinators](#): 1-2 coordinator(s) from each node (ELIXIR-NL: Rob, Mijke), coordinating local node contributions
- [Data Management Network](#): for all node data management staff
- Monthly meetings, intranet groups, mailing lists and slack channels



- Scientific best practices, integrated into [RDMkit](#) (WP3)
- Topics of the [data life cycle](#), in the various [life sciences domains](#) and to help solve [problems](#) that data stewards and their researchers are likely to experience

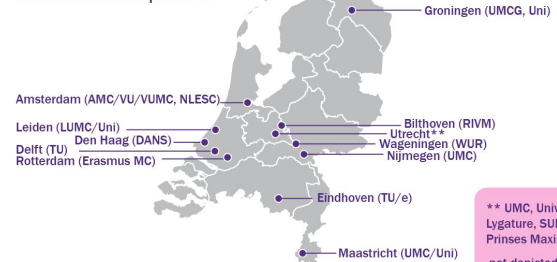
WP1: ELIXIR-NL: Bringing together the data stewardship community

- Facilitating communities is an essential element of professionalising data stewardship and FAIR data stewardship capacity building.
 - Exchange experiences and good practices
 - Jointly tackle data challenges
- For many years, DTL facilitates the [Data Stewards Interest Group](#) (DSIG), with regular meetings (next one: June 29) and a vibrant ([slack channel](#) - 566 members) community for data stewards and like-minded in the Netherlands **and beyond (welcome to join!)** to share experiences and foster the (Dutch) national implementation of data stewardship
- Within Health-RI, a dedicated [Data Stewardship Community](#) (DSC) unites healthcare data stewards for fruitful national collaborations, so each institute does not have to reinvent the wheel locally

Data Stewardship Interest Group

A professional community for Data Stewards and alike in "Life Sciences"

204 members*
of which 103 DTL partners



* based on registration September 2020

** UMC, University Utrecht, Lygature, SURF, The Hyve, Prinses Maxima Centrum
not depicted: Ontoforce (Ghent, Belgium)

WP₁: ELIXIR-NL: Bringing together the data stewardship community

IG

Professionalising Data Stewardship IG

Taxonomy:



Status: Recognised & Endorsed

Chair (s): Mijke Jetten, Peter Neish, Niklas Zimmer, Varsha Khodiyar, Romain DA

TAB Liaison: Christine Kirkpatrick

This is the webpage of the RDA Interest Group on professionalising data stewardship. It was established at the 14th Plenary (Helsinki), and a first informal group of interested people was established. We are currently in the process of being endorsed.

Are you curious about our ambitions, goals and activities. Make sure to read our clear active task groups, tackling the following challenges:

- a business case for data stewardship
- data stewardship terminology
- the integration of data stewardship across an organisation
- job profiles for data stewards
- training for data stewards
- career tracks for data stewards
- networking and knowledge exchange
- and certification.

[Webpage](#) and [slack channel](#)

Most task groups could use active engagement. Each task group/challenge has a channel. Join the channel of your interest if you want to help out (read [here](#) on how to join).

IG

Education and Training on handling of research data IG

Taxonomy:

Status: Recognised & Endorsed

Chair(s): Laura Molloy, Katarzyna Biernacka, Mijke Jetten, Amy Nurnberger

This page captures documentation associated with ETHRD-IG focus groups and their work. This documentation may include scoping statements, working documents, reports, outputs/recommendations.

Please organize focus groups in order of date of establishment then alphabetical. Format title: YYYY-MM-DD. Use heading 2 using this convention where date refers to the group establishment date: YYYY-MM-DD-IG name

2020-06, Learning resources collectors

- Initial scoping, 20200930
- List of training resources related to research data management
- Characteristics of learning resource collectors, e.g. registries, catalogues, etc.

2020-06, Minimal metadata for learning resources

- Initial scoping, 20200930
- Metadata comparison
- Metadata comparison by user stories

2020-06, Extended documentation enabling reuse of learning resources

- Initial scoping, 20200930

[Webpage](#) and [slack channel](#)

WP2: Skills: Training & capacity building: Data management training by the nodes for the nodes

- Build a comprehensive, interconnected and sustainable ELIXIR **training** and **capacity building** programme in **data management** across all nodes
- **Connect** the activities in the ELIXIR training and capacity building programme in Data Management sustainably **to the national roadmaps** of the nodes
- Establish high level of data management and data stewardship **knowledge and expertise** across ELIXIR nodes
- 22 ELIXIR nodes are involved in WP2
WP2 leads: Celia van Gelder (NL), Patricia Palagi (CH), Alexia Cardona (UK), Brane Leskosek (SI)

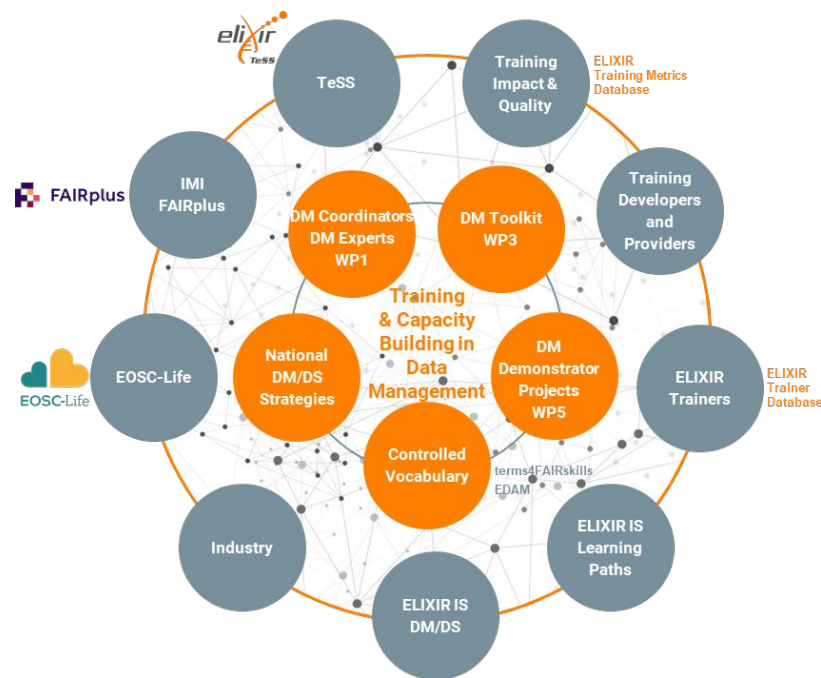


Image: Alexia Cardona

WP2: Define, build and deliver the training portfolio and roadmap

- Design courses, develop course materials (a.o. through hackathons) and deliver courses
- Audiences: data stewards, researchers, tool developers and trainers
- In alignment with node priorities and/or national strategies

• First trainings have been delivered! &

Training gap analysis has been performed



Data Management and Stewardship	ELIXIR Data Management Toolkit	Reproducibility
Data Management Plans	Policies	Ethics
Capturing/collecting/creating data	Finding data/Data discovery (Reusing existing data)	Infrastructure for storing and sharing data
Documenting & Organizing data	Processing, analysing data	FAIR
Meta-data	Publishing, sharing data & archiving data	

- Upcoming:
 - Training material generation hackathons related to the gap analysis topics
 - Train-the-data-stewardship-trainer courses

WP2: ELIXIR-NL: Data stewardship competency framework

Responsibilities, activities, KSAs and learning objectives for:

- **Data steward policy:** institute and policy focused
- **Data steward research:** project and research focused
- **Data steward infrastructure:** data and e-infrastructure focused

[Report](#) (2019) "Towards FAIR data steward as profession for the life sciences", with [matrices](#) and a Zenodo [community](#) with all output

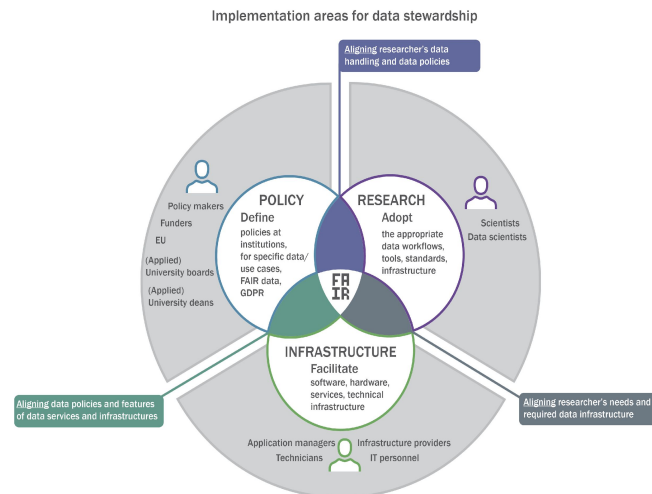
- Implemented in the EBI [Competency Hub](#)

Work continued in the Dutch National Programme Open Science (NPOS) and the [NPOS F professionalising data stewardship report](#)

- A collaborative effort of over 30 representatives of universities, UMCs, UASs, service providers, and representatives of the major Dutch umbrella organisations



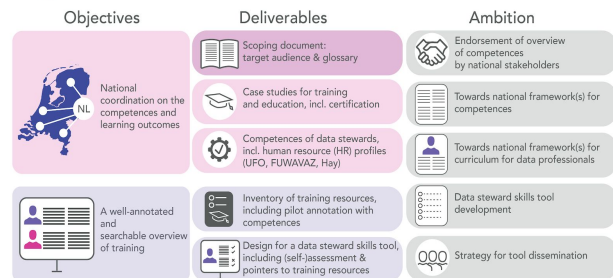
Landelijk Coördinatiepunt
Research Data Management



<http://doi.org/10.5281/zenodo.3460552>



Professionalising data stewardship:
competences, training and education



WP2: ELIXIR-NL: delivering FAIR data stewardship training

- [Helis Academy course](#) “FAIR Data stewardship for life sciences”
(all materials are available for reuse)
 - [First edition](#) (2019)
 - [Second edition](#) (2019)
 - [Third edition](#) (2021) (in this edition observers from ELIXIR-IT and ELIXIR-SE attended, as we will help them deliver a similar course in their country in 2021)
- ELIXIR-NL [Technical Data Stewardship Course](#) 2019
- Data stewardship training in 2020 for Early Career Researchers from Marie Curie ITNs
 - [Combating Disorders of Adaptive Immunity with Systems Medicine](#) ([materials](#))
 - [Prostate Cancer Extracellular Vesicle LifeCycle](#) ([materials](#))
- In 2020, various data stewardship webinars and metadata workshops were given for data stewards and project leads of the ZonMw granted [Covid-19 projects](#), as a collaborative action of GO FAIR, Health-RI and DTL, as part of the ZonMw FAIR data requirements



WP3: shared toolkit: RDMkit

RDMkit

Data life cycle
Start here to get an overview of research data management. Click on a section of the diagram below to get an introduction to that stage of the data management life cycle.

Your role -

- Researcher
- Data steward policy
- Data steward research
- Data steward infrastructure

Your domain +

Your problem +

All tools and resources

Tools assembly +

Data life cycle diagram: A circular diagram with eight segments: Reuse (red), Plan (orange), Collect (yellow), Process (green), Analyse (teal), Preserve (blue), Share (purple), and a central white circle.

Your role
Identify your role in research data management, find data management resources relevant for you, and information to help you progress in your career path.
Show pages +

Your domain
Learn about the data management problems that affect your domain or research community, and the solutions adopted to address them.
Show pages +

Your problem
Find guidelines and solutions for tackling common data management problems.
Show pages +

All tools and resources
Browse the RDMkit's catalogue of tools and resources for research data management.
• All tools and resources page

Tools assembly
Find concrete combinations of tools and resources assembled into a workflow for research data management.
Show pages +

RDMkit — A toolkit that scales and enables

Support the data needs of Europe's estimated **500,000** life scientists
A user-oriented guide to the FAIR RDM activities of ELIXIR



increase
self-sufficiency



support researchers
to know and utilise
RDM services



build capacity and
skills in every
research institute



pool the expertise
of the community
for the community

<https://rdmkit.elixir-europe.org>

WP3: ELIXIR-NL: connecting RDMkit & the DSW

- Linking RDMkit and [Data Stewardship Wizard](#) in both directions, incorporating the knowledge of RDMkit in the DSW knowledge model
- Web-based application for preparing smart Data Management Plans. It connects to learning resources and helps raise awareness about data stewardship challenges
- **Researchers:** support in data stewardship planning, raise awareness
- **Data stewards:** checklist data stewardship planning
- **Experts:** their contact details can be linked
- **Funders & institutes:** customize, domain specific
- Allows tailor made DSW instances for an organisation, a node, a company etc. (contact: rob.hoofdt@dtls.nl)

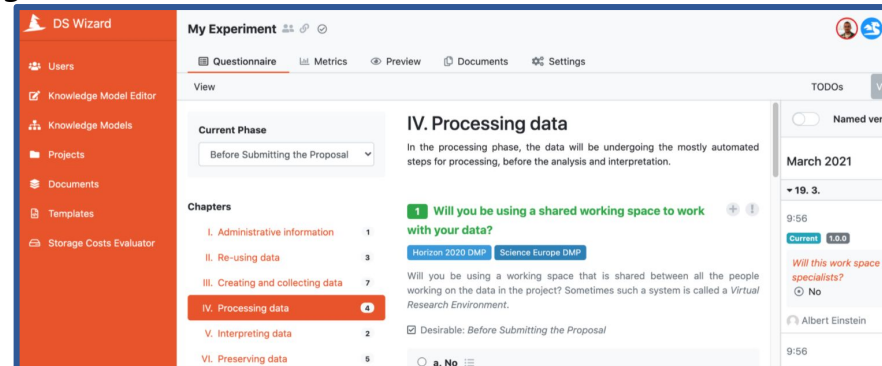
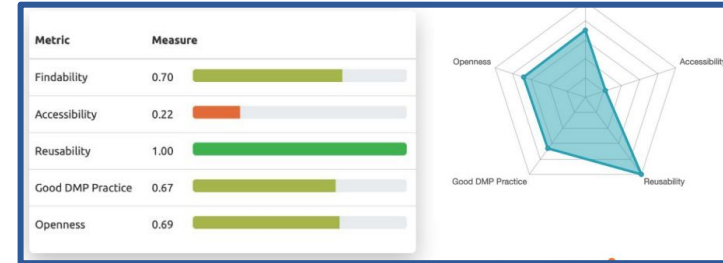
9 Will you need consent for any newly collected personal data?

External links: [RDMkit about sensitive data](#)

a. No, We do not collect any new personal data
Reusability

b. No, our work on personal data can be done using another legal base
Reusability

c. Yes, we will collect consent for our specific use of the data
Reusability



DS Wizard

My Experiment

Questionnaire | Metrics | Preview | Documents | Settings

View

Current Phase: Before Submitting the Proposal

IV. Processing data

In the processing phase, the data will be undergoing the mostly automated steps for processing, before the analysis and interpretation.

Chapters

- I. Administrative information 1
- II. Re-using data 3
- III. Creating and collecting data 7
- IV. Processing data 4
- V. Interpreting data 2
- VI. Preserving data 5

1 Will you be using a shared working space to work with your data?

Horizon 2020 DMP | Science Europe DMP

Will you be using a working space that is shared between all the people working on the data in the project? Sometimes such a system is called a Virtual Research Environment.

Desirable: Before Submitting the Proposal

a. No

TODOS

Named vers

March 2021

19. 3.

9:56

Current 1.0.0

Will this work space be specialists?

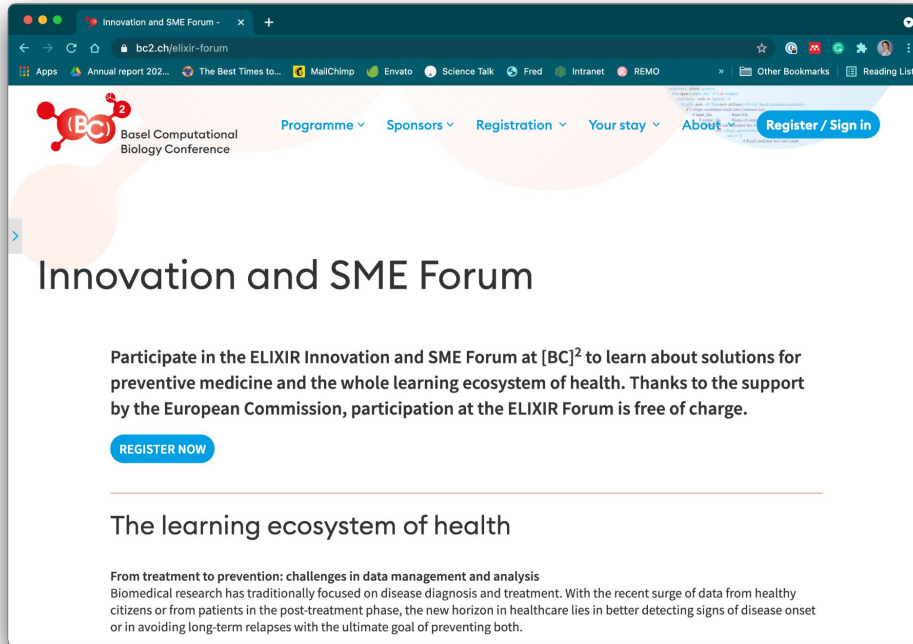
No

Albert Einstein

9:56

WP4: Industry engagement

PLANS



The screenshot shows a web browser displaying the 'Innovation and SME Forum' page. The browser's address bar shows 'bc2.ch/elixir-forum'. The website header includes the [BC]² logo and navigation links for 'Programme', 'Sponsors', 'Registration', 'Your stay', and 'About'. A prominent blue button says 'Register / Sign in'. The main heading is 'Innovation and SME Forum'. Below it, a paragraph states: 'Participate in the ELIXIR Innovation and SME Forum at [BC]² to learn about solutions for preventive medicine and the whole learning ecosystem of health. Thanks to the support by the European Commission, participation at the ELIXIR Forum is free of charge.' A blue button labeled 'REGISTER NOW' is positioned below this text. Further down, the section 'The learning ecosystem of health' is introduced, followed by a sub-section 'From treatment to prevention: challenges in data management and analysis' with a short paragraph of text.

Innovation and SME Forum

13 September 2021 | Basel or online

Building the learning ecosystem of health:
from data tracking to preventive medicine

[Register here](#)

2022: Health-RI/ELIXIR SME Forum in NL,
around theme "health data & AI"

WIKI: how to engage with industry

Publication: January 2022

Summary guidance document for Nodes on
liaising with the private sector (capacity
building in nodes)

ELIXIR-NL involvement in other CONVERGE WPs

- *WP5: Demonstrators*: will be capturing their expertise in a Data Stewardship Wizard knowledge model
- *WP6: Excellence in management*: Work on the ELIXIR Node Organisation Models

Later additions (doubling total size of the project):

- *WP7: Covid-19 addition*: managing federated human data; installing Federated EGA (European genome/phenome archive) at ELIXIR nodes. We want to follow along with Health-RI
- *WP8: Support for the European Covid-19 data portal*: an EBI activity; several other ELIXIR nodes have built national portals too, just like the Netherlands (Health-RI)
- *WP9: Covid-19 variant surveillance data*: just starting, connecting NL efforts with RIVM and Erasmus MC

Acknowledgements

- The ELIXIR-NL, DTL and Health-RI team
- ELIXIR-CONVERGE WP members
- NPOS-F team
- RDA Professionalising Data Stewardship Interest Group
- RDA Education and Training in Handling Research Data Interest Group
- DTL Data Stewards Interest Group

