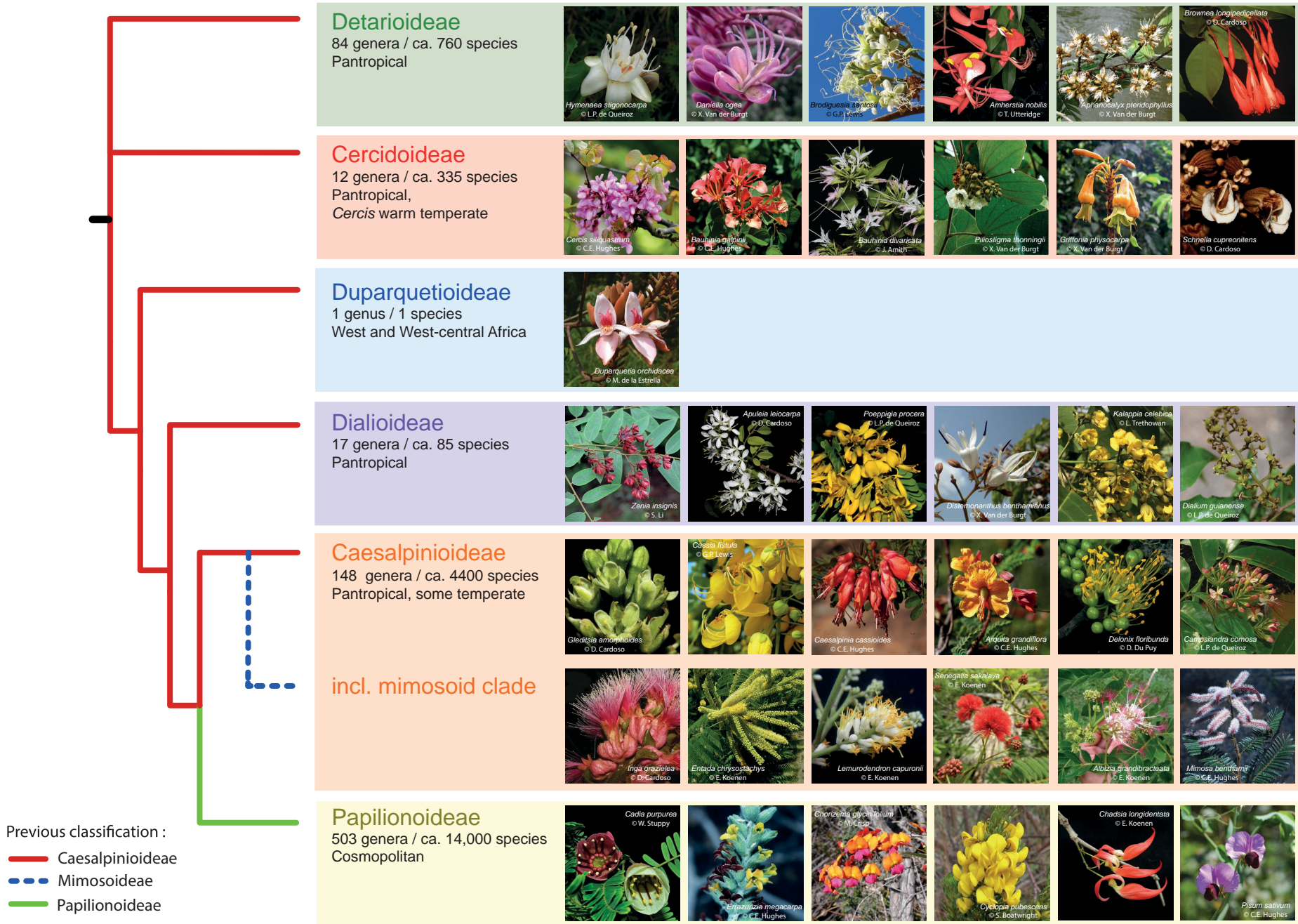


# A new subfamily classification of the Leguminosae

## Legume Phylogeny Working Group 2017



This new classification of the legume family, representing the consensus view of the international legume systematics community, addresses the long-known non-monophyly of the traditionally recognized subfamily Caesalpinioideae, by recognizing six robustly supported monophyletic subfamilies. The former subfamily Mimosoideae is nested within the re-circumscribed Caesalpinioideae and is referred to informally as the mimosoid clade. — Legume Phylogeny Working Group (LPWG). 2017. A new subfamily classification of the Leguminosae based on a taxonomically comprehensive phylogeny. *Taxon* 66: 44–77.