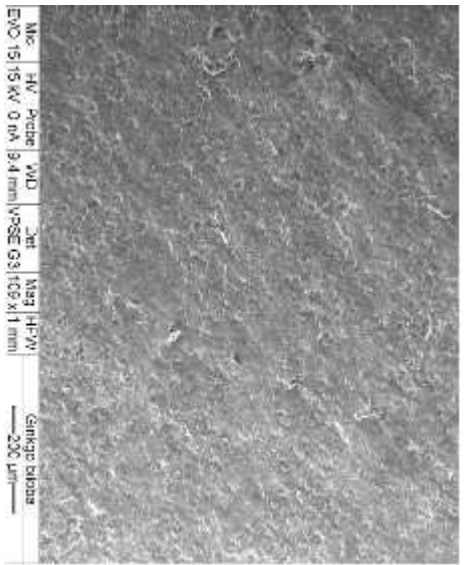
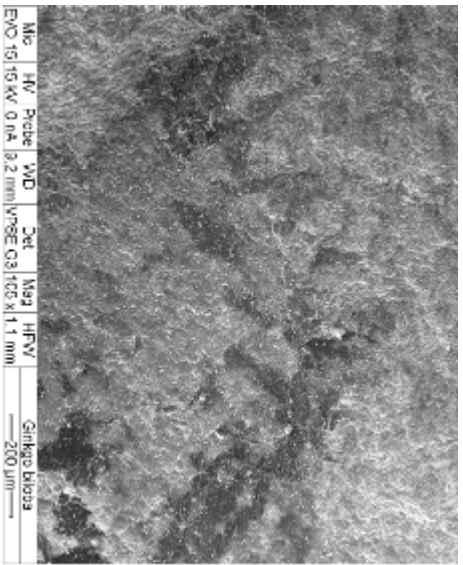


Magnification: 15.0kx
Probe: 0.0nA
WD: 9.4mm
Det: SE-TOPO
Mag: X250.0um
HFV: 1.1mm
Ginkgo biloba
200um



Magnification: 15.0kx
Probe: 0.0nA
WD: 9.4mm
Det: SE-TOPO
Mag: X250.0um
HFV: 1.1mm
Ginkgo biloba
200um



Magnification: 15.0kx
Probe: 0.0nA
WD: 9.2mm
Det: SE-TOPO
Mag: X1.1mm
HFV: 1.1mm
Ginkgo biloba
200um