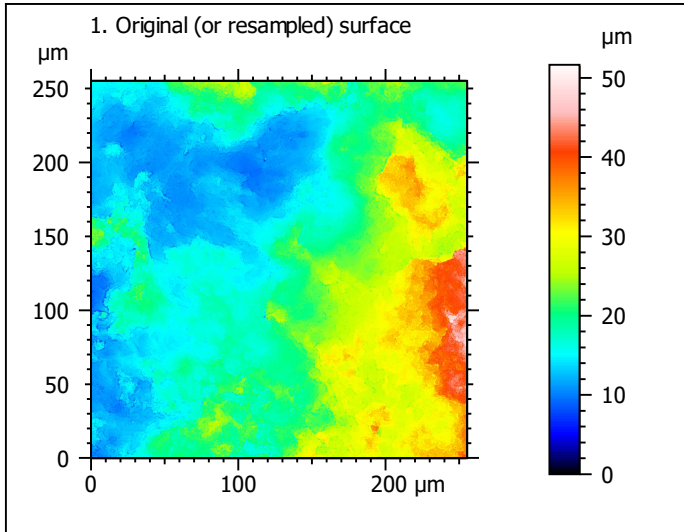


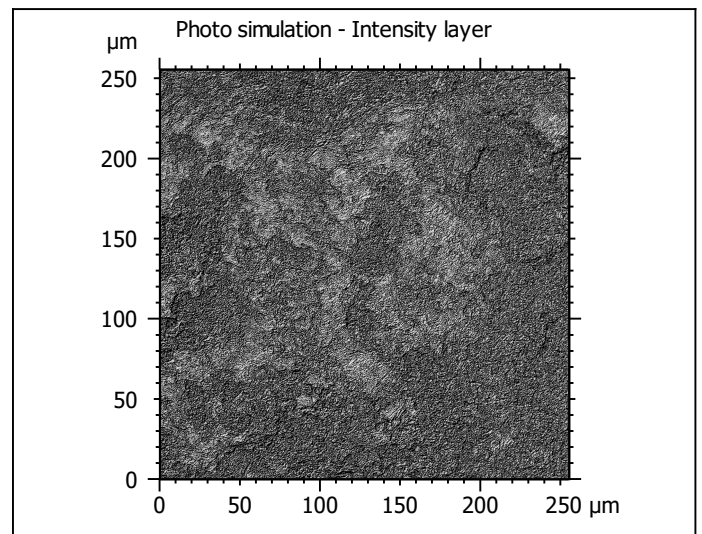
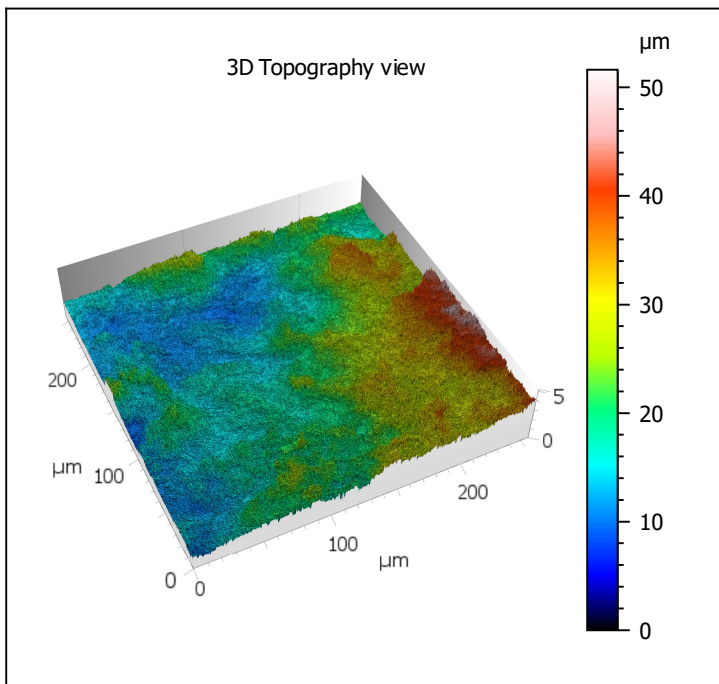
Template - Processing analysis

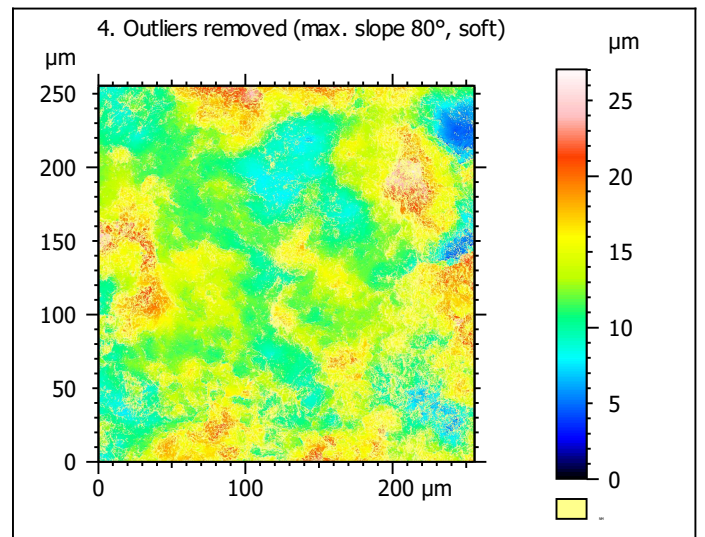
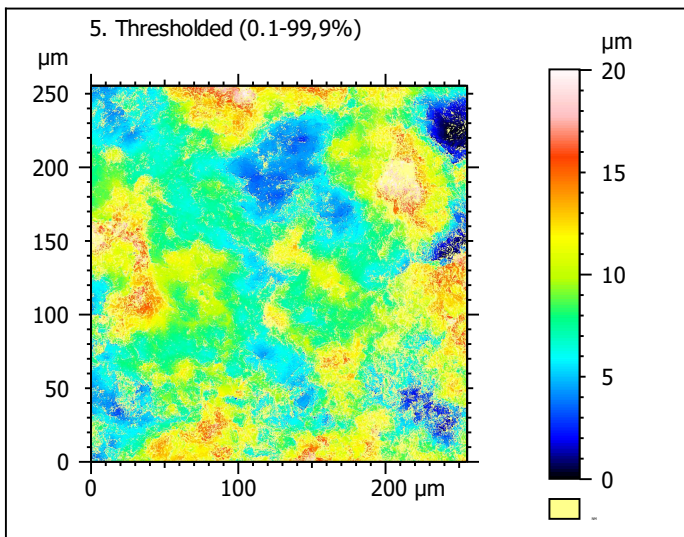
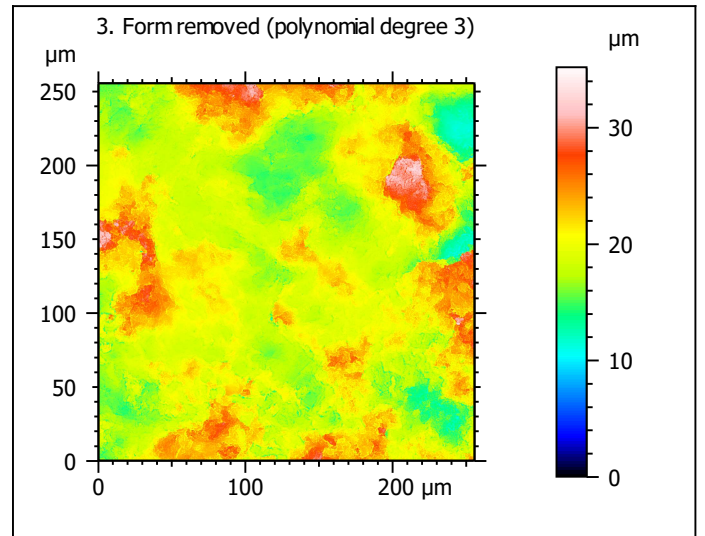
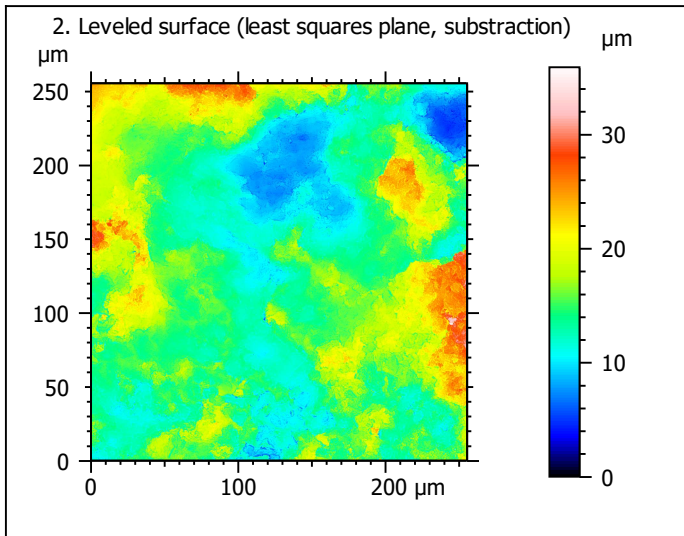
Template to process all surfaces acquired with the Zeiss LSM 800 with the 50x/0.75 objective.

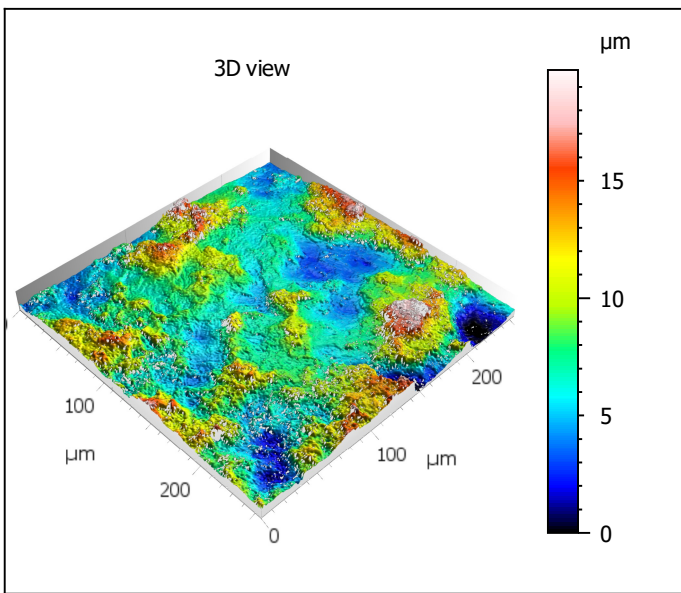
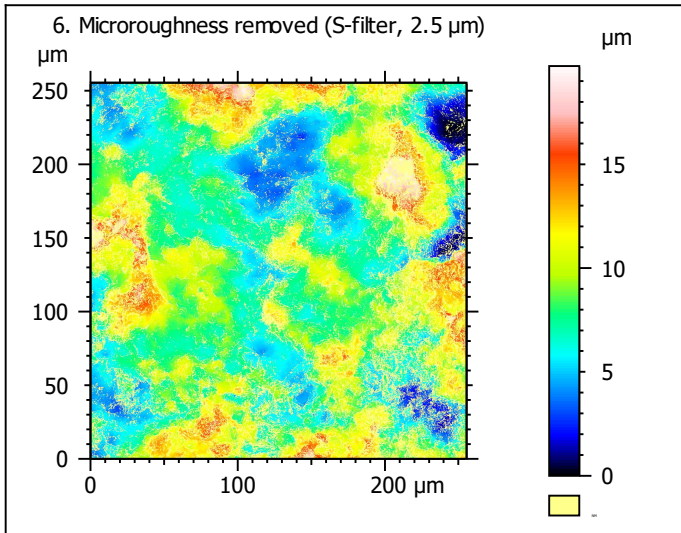
Processing



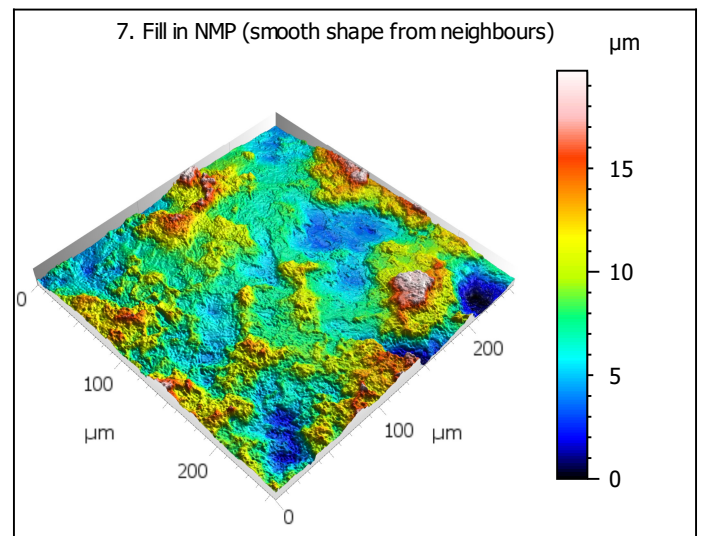
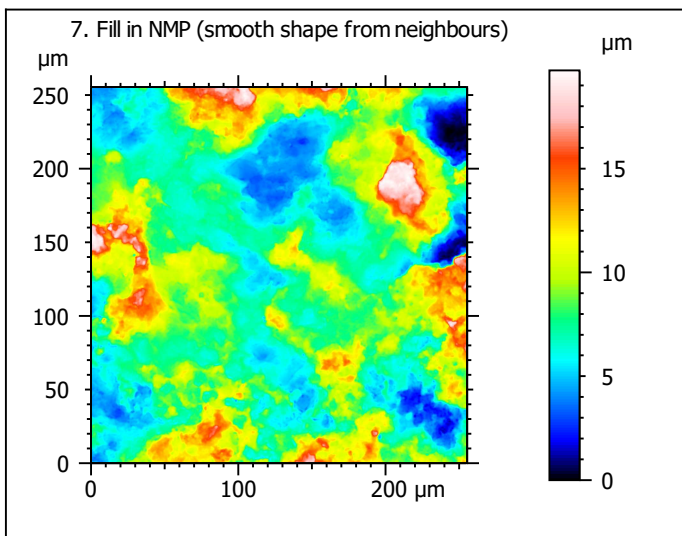
| Identity card | | | |
|------------------|------------------------------|--------|--|
| Name: | Lime3-9_LSM_50x075_suf3_Topo | | |
| Created on: | 6/24/2020 2:54:34 PM | | |
| Studiabile type: | Surface | | |
| Axis: | X | | |
| Length: | 255.5 | µm | |
| Size: | 3000 | points | |
| Spacing: | 85.19 | nm | |
| Axis: | Y | | |
| Length: | 255.5 | µm | |
| Size: | 3000 | points | |
| Spacing: | 85.19 | nm | |
| Axis: | Z | | |
| Layer type: | Topography | | |
| Length: | 51.65 | µm | |
| Size: | 65531 | digits | |
| Spacing: | 0.7882 | nm | |
| NM-points ratio: | 0.000 % (0 Pts) | | |







| Identity card | | | |
|------------------|---|---------------|--|
| Name: | Lime3-9_LSM_50x075...filtered (As 2.500 μm) | | |
| File path: | D:\Dr...\Lime3-9_LSM_50x075_suf3_Topo.sur | | |
| Created on: | 6/24/2020 2:54:34 PM | | |
| Studiabale type: | Surface | | |
| Axis: | X | | |
| Length: | 255.5 | μm | |
| Size: | 3000 | points | |
| Spacing: | 85.19 | nm | |
| Offset: | 0.000 | μm | |
| Axis: | Y | | |
| Length: | 255.5 | μm | |
| Size: | 3000 | points | |
| Spacing: | 85.19 | nm | |
| Offset: | -255.5 | μm | |
| Axis: | Z | | |
| Layer type: | Topography | | |
| Length: | 19.72 | μm | |
| Min: | -8.28 | μm | |
| Max: | 11.44 | μm | |
| Size: | 250172 | digits | |
| Spacing: | 0.07882 | nm | |
| NM-points ratio: | 39.75 % (3577236 Pts) | | |

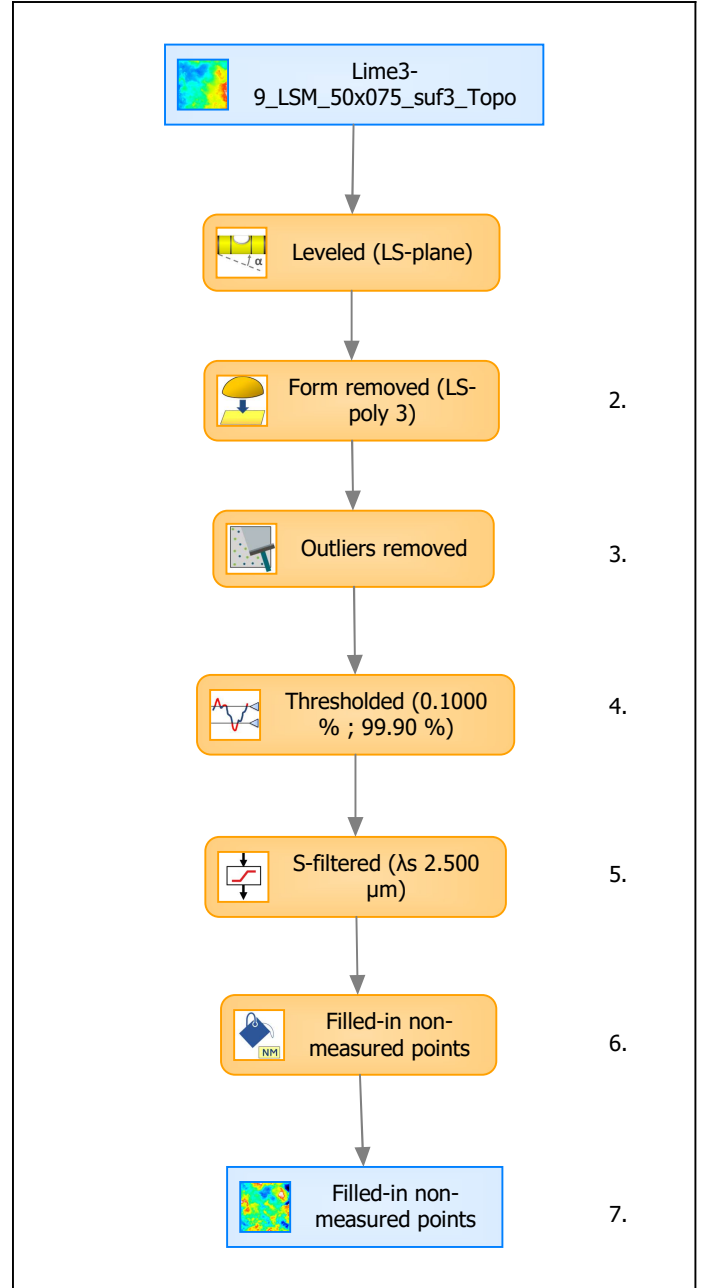


| Identity card | | | |
|------------------|---|--------|--|
| Name: | Lime3-9_LSM_50x075_s...in non-measured points | | |
| Created on: | 6/24/2020 2:54:34 PM | | |
| Studiable type: | Surface | | |
| Axis: | X | | |
| Length: | 255.5 | μm | |
| Size: | 3000 | points | |
| Spacing: | 85.19 | nm | |
| Axis: | Y | | |
| Length: | 255.5 | μm | |
| Size: | 3000 | points | |
| Spacing: | 85.19 | nm | |
| Axis: | Z | | |
| Layer type: | Topography | | |
| Length: | 19.72 | μm | |
| Size: | 250172 | digits | |
| Spacing: | 0.07882 | nm | |
| NM-points ratio: | 0.000 % (0 Pts) | | |

Analyses

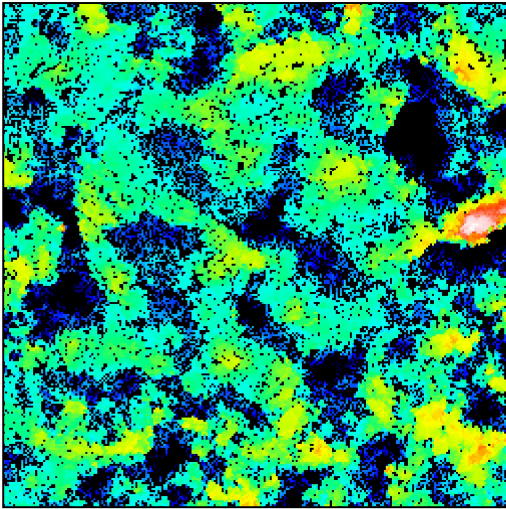
8. ISO 25178-2 parameters on surface #7

| ISO 25178 - Primary surface | | | |
|---|--------|----------------------------------|--|
| <i>F: [Workflow] Form removed (LS-poly 3)</i> | | | |
| <i>S-filter (λs): [Workflow] S-filtered (λs 2.500 μm)</i> | | | |
| Height parameters | | | |
| Sq | 3.154 | μm | |
| Ssk | 0.6024 | | |
| Sku | 3.689 | | |
| Sp | 11.31 | μm | |
| Sv | 8.407 | μm | |
| Sz | 19.72 | μm | |
| Sa | 2.449 | μm | |
| Functional parameters | | | |
| Smr | 0.4690 | % | |
| Smc | 4.211 | μm | |
| Sxp | 4.869 | μm | |
| Spatial parameters | | | |
| Sal | 26.11 | μm | |
| Str | 0.7232 | | |
| Std | 163.3 | ° | |
| Hybrid parameters | | | |
| Sdq | 0.8406 | | |
| Sdr | 22.27 | % | |
| Functional parameters (Volume) | | | |
| Vm | 0.2114 | μm ³ /μm ² | |
| Vv | 4.422 | μm ³ /μm ² | |
| Vmp | 0.2114 | μm ³ /μm ² | |
| Vmc | 2.593 | μm ³ /μm ² | |
| Vvc | 4.144 | μm ³ /μm ² | |
| Vvv | 0.2787 | μm ³ /μm ² | |



| Analyses: | |
|-------------------|-----|
| ISO 25178 | 8. |
| Furrow | 9. |
| Texture direction | 10. |
| Texture isotropy | 11. |
| SSFA | 12. |

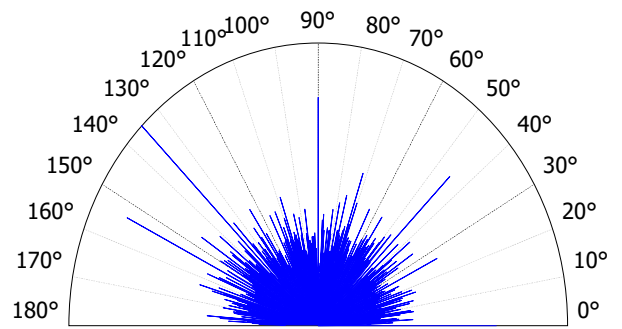
9. Furrow analysis on surface #7



All furrows are shown.

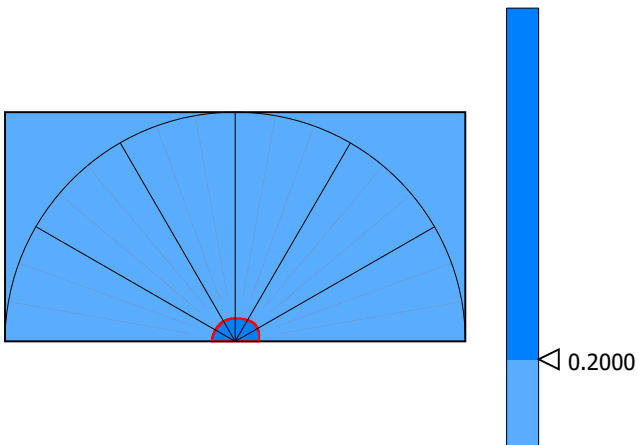
| Parameters | Value | Unit |
|--------------------------|-------|--------|
| Maximum depth of furrows | 12.04 | µm |
| Mean depth of furrows | 3.870 | µm |
| Mean density of furrows | 4618 | cm/cm2 |

10. Texture direction on surface #7



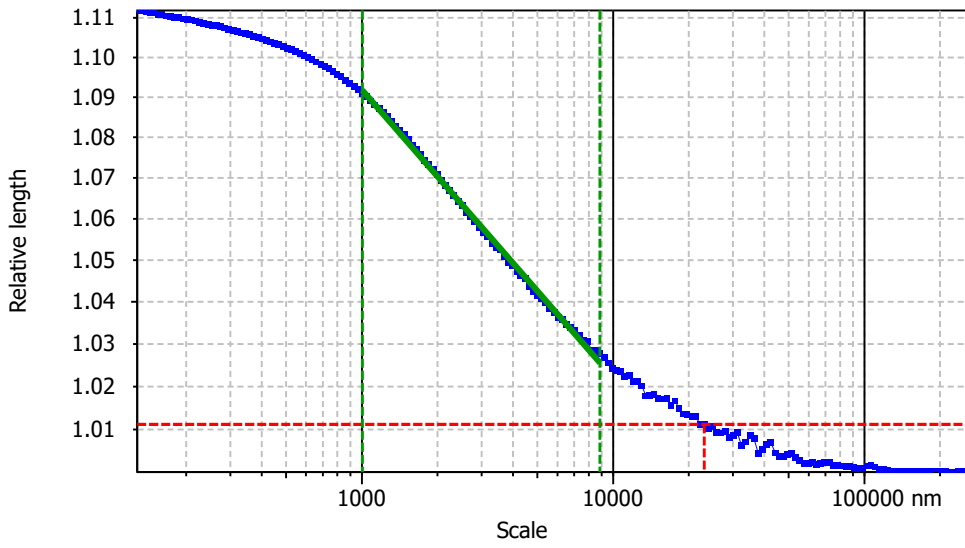
| Parameters | Value | Unit |
|------------------|-------|------|
| First direction | 135.0 | ° |
| Second direction | 153.5 | ° |
| Third direction | 90.01 | ° |

11. Texture isotropy on surface #7



| Parameters | Value | Unit |
|------------------|-------|------|
| Texture isotropy | 87.77 | % |

12. SSFA on surface #7

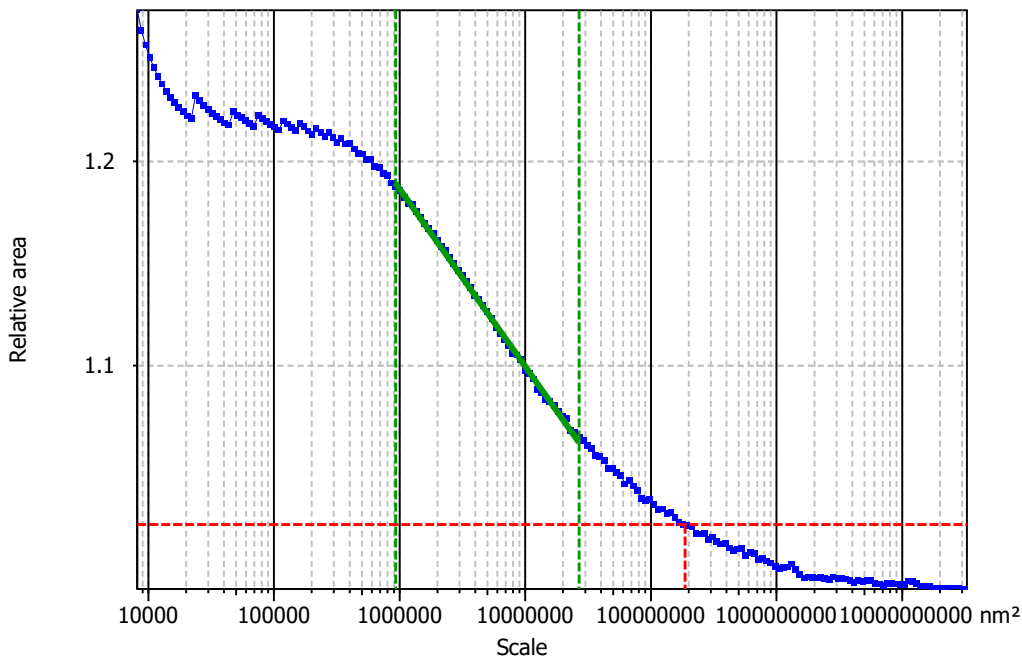


Information

Method Length-scale (rows)

Parameters

| Value | Unit | Comment |
|-------|------|--|
| ***** | | Length-scale anisotropy (Sfrac) (1.8 nm, 5°) |
| ***** | | Length-scale anisotropy (1.8 nm, 5°) |



Information

Method Area-scale (four corners)

Parameters

| Value | Unit | Comment |
|---------|------|-----------------------------|
| 32.87 | | Fractal complexity |
| 4628049 | nm² | Scale of max complexity |
| 0.2963 | | Heterogeneity of Asfc (3x3) |
| 0.5723 | | Heterogeneity of Asfc (9x9) |