

Appendix A. Supplementary data

Title: First fossil trichophyine rove beetle from mid-Cretaceous amber of northern Myanmar (Coleoptera: Staphylinidae: Trichophyinae)

Authors: Shûhei Yamamoto, Alfred F. Newton

Appendix 1

Label data and depository information of the extant Trichophya taxa used and figured in this study.

The data labels are cited below in double quotes and separated from each other by a comma, different lines in an individual label are separated with '|'; explanations of the labels are given in square brackets, descriptive notes about the labels are given in angle brackets.

Pinned specimens:

Trichophya antennalis Cameron, 1 female (body length: 2.19 mm): “Gahan 7000’ | Simla Hills” <rectangular small label, printed>, “Dr. Cameron. | IX. 1921.” <rectangular small label, printed>, “Chicago Nat. Hist. Mus. | (ex M. Cameron Colln. | by exchange with | Brit. Mus. Nat. Hist.)” <rectangular small label, printed>, “Compared with [printed, red letters] | Paratype [printed, red letters] | Trichophya [handwritten] | antennalis [handwritten] | Cam. [handwritten]” (FMNH: Gantz Family Collections Center).

T. pilicornis (Gyllenhal), 1 female: “HOHE TAUERN | KOETSCHACHTAL | BERNHAUER” <rectangular small label, printed>, “Chicago NHMus | M.Bernhauer | Collection” <rectangular small label, printed>, “*Trichophya* | *pilicornis* | (Gyllenhal) | det. Newton 1992” <rectangular small label, printed> (FMNH: Gantz Family Collections Center).

T. texana Ashe & Newton, 1 female: “U.S.A.: Texas, | Culberson Co., | Guadalupe Mtns. Nat. | Pk., “The Bowl”, 2407m,” <rectangular small label, printed>, “13.IX.1988 | oak/conifer litter, R. | Anderson, berlese | FIELD MUSEUM” <rectangular small label, printed>, “PARATYPE | Trichophya | texana Ashe | & Newton 1992” <rectangular small, yellow label, printed > (FMNH: Gantz Family Collections Center).

Slide specimens (cleared in KOH and dissected specimens):

T. pilicornis, 1 female: “♀ A | Trichophya | pilicornis (Gyll.) | USA: MO:” < directly handwritten on the slide >, “River Cave | Hahatonka | Mo. June8, ‘38 | K. Dierolf [handwritten]” < printed in rectangular small label, directly pasted on the slide>, “FIELD MUSE | K. Dierolf Coll” <printed in rectangular small label, directly pasted on the slide>, “PM” < directly handwritten on the slide>, <with additional green round seal on the right side: “3.91 [handwritten; it means that the slide was made by A. Newton in March 1991.]”> (FMNH: personal collection of A. Newton); 2 males, 2 females: “♂♀ A | Trichophya | pilicornis (Gyll.) | WASH.: King Co. | c. 10-12 mi N of No. | Bend, c. 1200 ft. 17. IV. 1983 2° | mixed conifer for. | P.J. + C. C. Johnson | aerial dredging | (afternoon) | PM” < directly handwritten on the slide; PM is an abbreviation for Permout®, a synthetic histological mounting medium > (FMNH: personal collection of A. Newton).

T. tarsalis (Casey), 1 female: “♀ A | Trichophya | tarsalis Casey” < directly handwritten on the slide >, “tarsalis Cas. [handwritten] | det.Bernh.” < printed in rectangular small label, directly pasted on the slide>, “Tallac, Cal. | Dr.A.Fenyas” <printed in rectangular small label, directly pasted on the slide>, “Chicago NHMus | M.Bernhauer | Collection” <rectangular small label, printed>, <with additional green round seal on the right side: “3.91 [handwritten; it means that the slide was made by A. Newton on March 1991.]”> (FMNH: personal collection of A. Newton); 1 female: “♀ A | Trichophya | tarsalis (Casey)” < directly handwritten on the slide >, “OREGON: Grant Co.: Dixie | Pass, Blue Mtns. E. of | prairie City, app. 5000’ | V: 31: 1957 leg. H.S. Dybas” <printed in rectangular small label, directly pasted on the slide>, “in flight- | late | afternoon” <printed in rectangular small label, directly pasted on the slide>, “PM” < directly handwritten on the slide; PM is an abbreviation for Permout®, a synthetic histological mounting medium>, <with additional green round seal on the right side: “3.91 [handwritten; it means that the slide was made by A. Newton in March 1991.]”> (FMNH: personal collection of A. Newton).

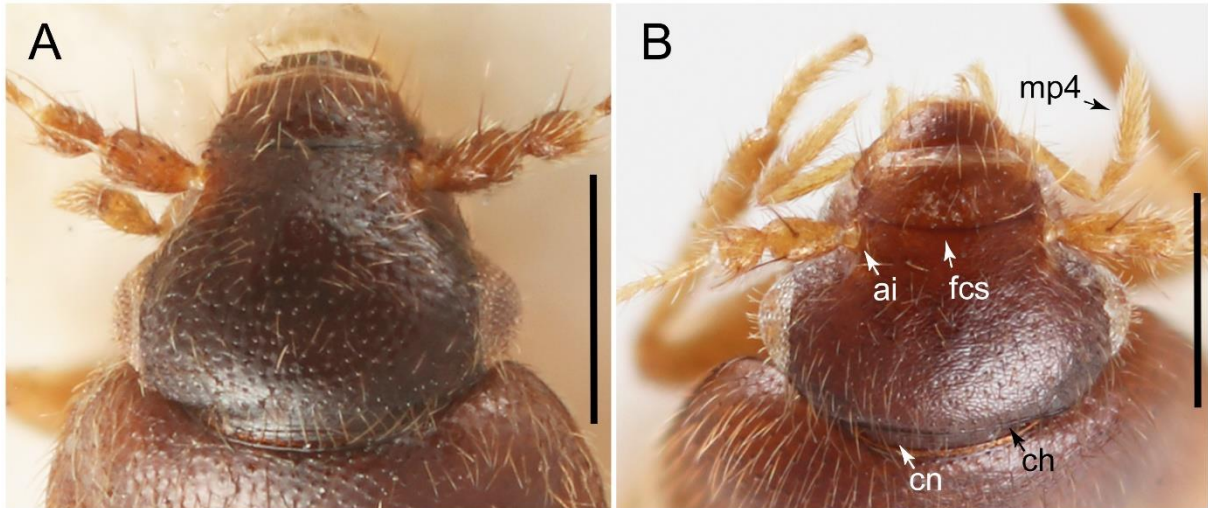
T. texana, 1 male: “♂ A [handwritten]”, “PARARYPE | *Trichophya* | *texana* | Ashe | & Newton 1992” <printed in yellow paper card, directly pasted on the slide>, “USA: TX: Culb. Co. | Guadalupe Mtns. | N.P., The Bowl, jct. | Tejas +Juniper | Trails, 31. VII. 1989 | R. Anderson | berl. litter PM” <handwritten; PM is an abbreviation for Permout®, a synthetic histological mounting medium>, <with additional green round seal on the right side: “3.91 [handwritten; it means that the slide was made by A. Newton in March 1991.]”> (FMNH: personal collection of A. Newton).

Appendix 2

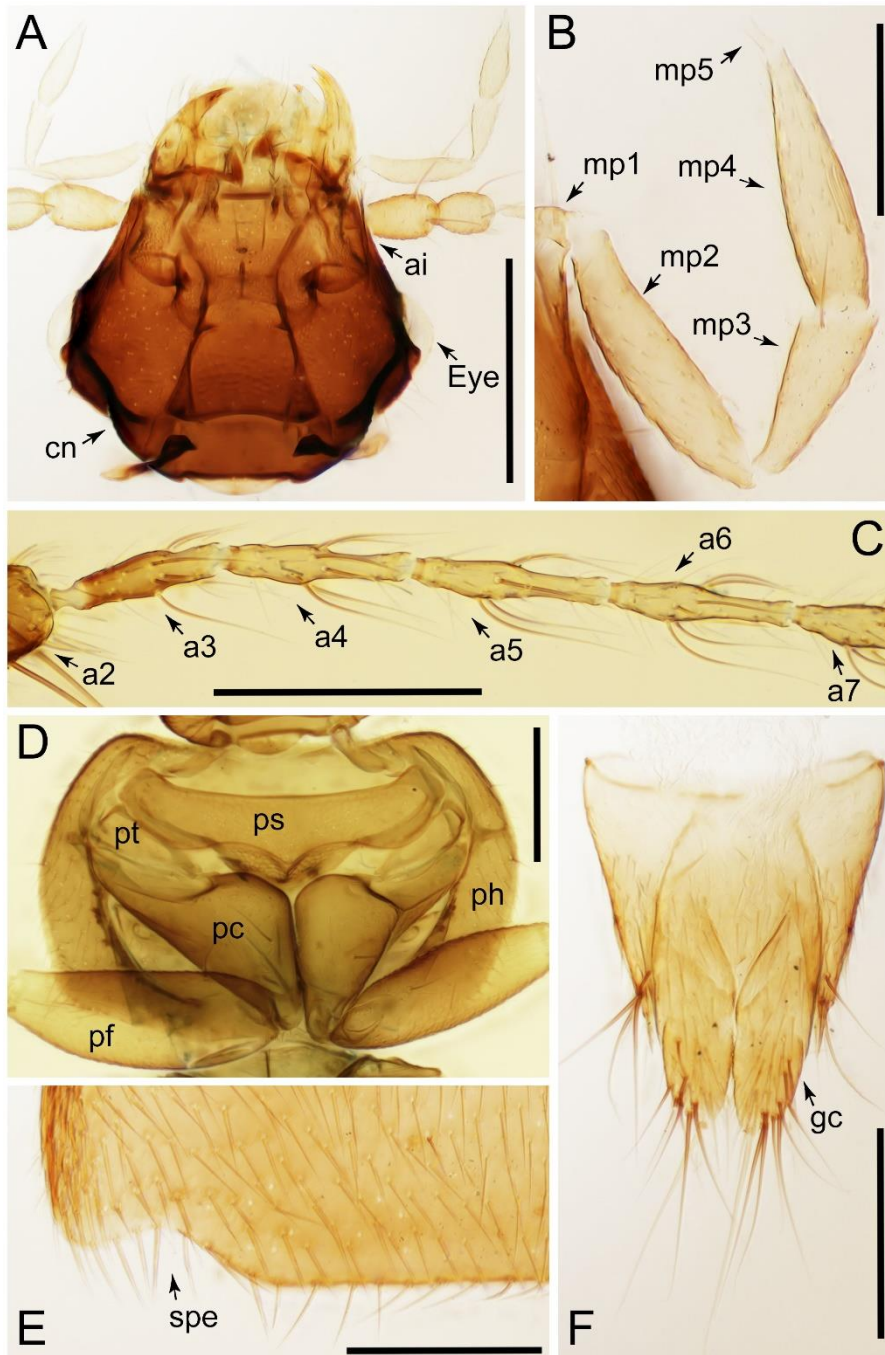
Supplementary figures (Supplementary Figs 1–3).



Supplementary Fig. 1. Antennae of extant species of Trichophyinae. A. *Trichophya pilicornis* from Austria; B. *T. antennalis* from Northwest India. Abbreviations: a10–11, antennomeres 10–11. Scale bars: 0.5 mm (A), 0.3 mm (B).



Supplementary Fig. 2. Heads of extant species of Trichophyinae. A. *Trichophya pilicornis* from Austria; B. *T. texana* Ashe & Newton from USA. Abbreviations: ai, antennal insertion; ch, basal carina on head; cn, constriction on neck region; fcs, frontoclypeal suture; mp4, maxillary palpomere 4. Scale bars: 0.3 mm.



Supplementary Fig. 3. Morphological details of extant species of Trichophyinae. A. head, ventral view; B. right maxillary palpus, ventral view; C. enlargement of left antenna; D. prothorax and procoxae, ventral view; E. posterior margin of left elytron, dorsal view; F. female abdominal terminalia, showing developed gonocoxites. A: *Trichophya texana* from USA; B, C: *T. pilicornis* from USA; D–F: *T. tarsalis* (Casey) from USA. Abbreviations: a2–7, antennomeres 2–7; ai, antennal insertion; cn, constriction on neck region; gc, gonocoxite; mp1–5, maxillary palpomeres 1–5; pc, procoxa; pf, profemur; ph, pronotal hypomeron; ps, prosternum; pt, protrochantin; spe, sinuate posterior margin of elytron. Scale bars: 0.3 mm (A), 0.1 mm (B, E), 0.15 mm (C), 0.2 mm (D, F).