

MAKING SMITHSONIAN OPEN ACCESS ACCESSIBLE WITH PYTHON AND DASK



Smithsonian



DASK

Mike Trizna

Smithsonian OCIO Data Science Lab

May 4, 2021 | *csv,conf,v6*

WHAT IS THE SMITHSONIAN INSTITUTION?

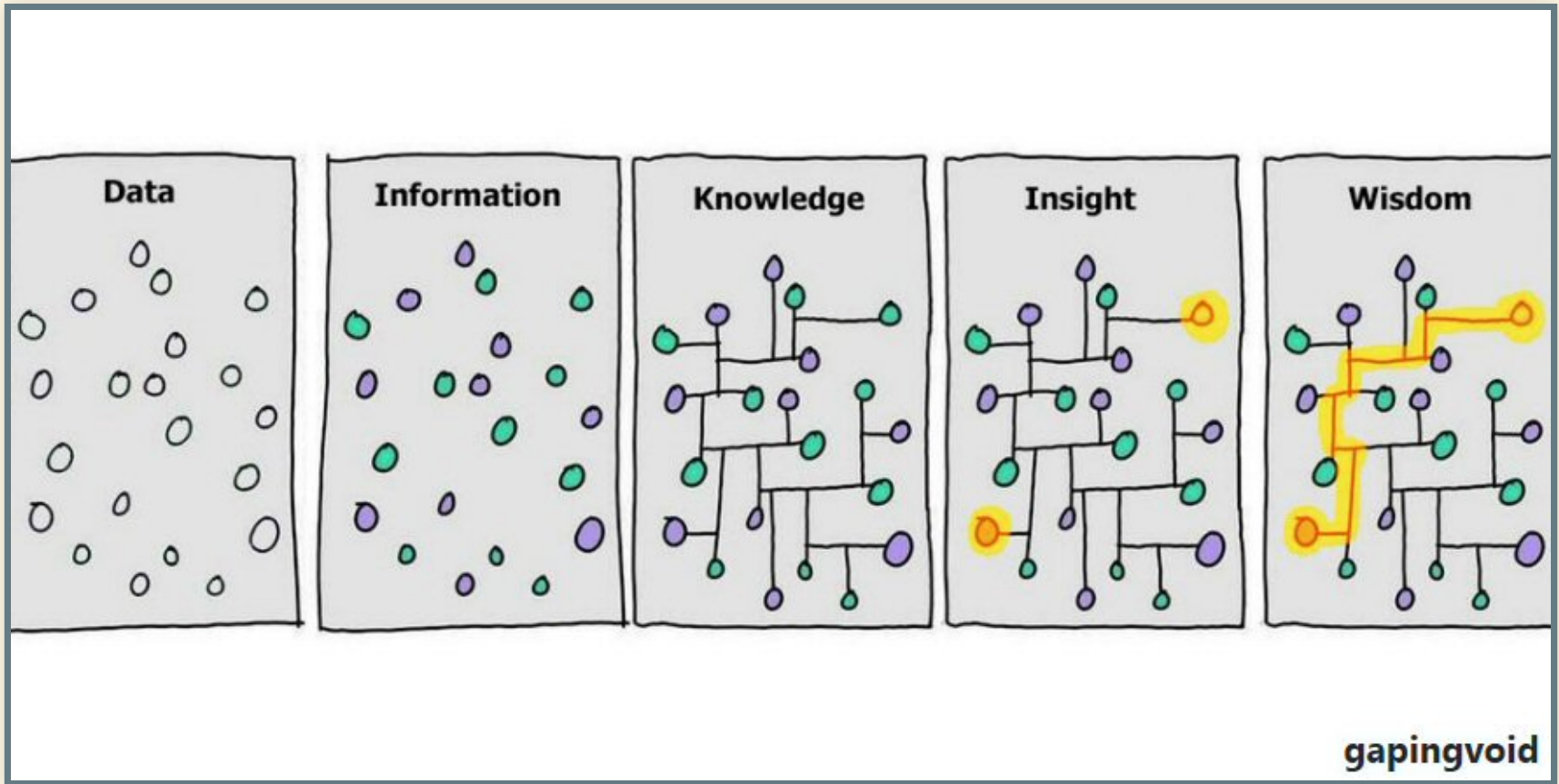
Yes, there are the museums
(19 of them, mostly in
Washington, DC), but we
also have 21 libraries and
archives, 9 research
centers ... and a zoo.



SMITHSONIAN MISSION

Founded in 1846 from the bequest of Englishman James Smithson with the condition:

"under the name of the Smithsonian Institution, an establishment for the increase and diffusion of knowledge."



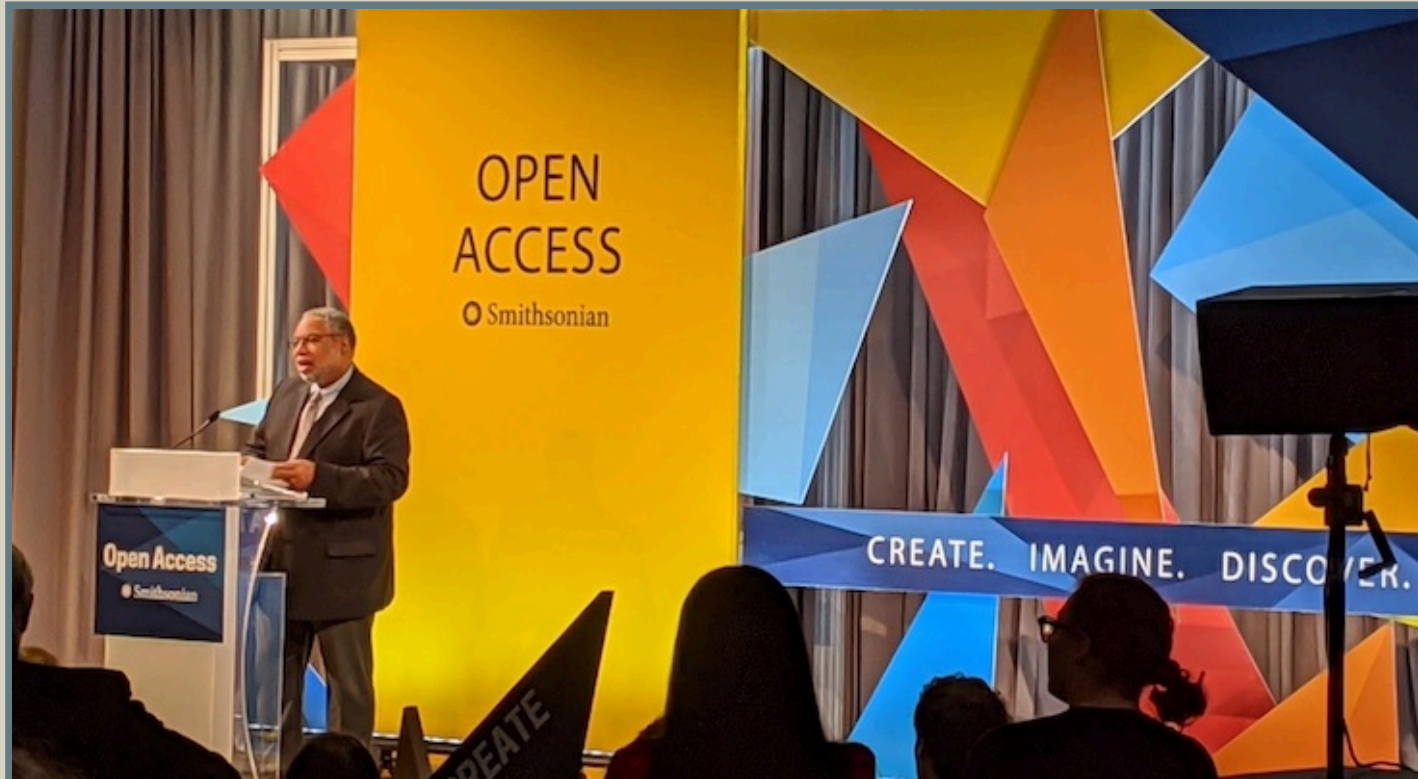
The Smithsonian has been increasing and diffusing *Knowledge* since 1846, but what about all of that *Data*?



All of that *data* and *info* that fed into *knowledge*, *insight*,
and wisdom were dutifully cataloged and stored.

LAUNCH EVENT

February 25, 2020



SI OPEN ACCESS RELEASE

Of the Smithsonian's 155 million objects, 2.1 million library volumes and 156,000 cubic feet of archival collections:

- 2.8 million 2-D and 3-D images
- Over 17 million collection metadata objects

TERMS OF USE

Before February 2020, all Smithsonian museums and units made their data searchable and sometimes able to download, but through each individual unit. Many different use agreements.

SI Open Access put all media and metadata in one place, and all Open Access media is CC0.

SO HOW CAN ALL OF THIS DATA BE ACCESSED?

I will cover 3 different ways.

All 3 share metadata records in the same deeply-nested JSON structure.

WEB API

: <http://edan.si.edu/openaccess/apidocs/>

- API Key needed (but free and painless to register)
- Great for getting a feel for record structure

HOWEVER YOU WILL QUICKLY RUN INTO LIMITATIONS

- Records are extensively indexed, but can only search indexed fields.
- Row limit of 1000 per API call

EXAMPLE: HERBARIUM SHEET MERCURY DETECTOR

Biodiversity Data Journal 5: e21139
doi: 10.3897/BDJ.5.e21139



Research Article

Applications of deep convolutional neural networks to digitized natural history collections

Eric Schuettelpetz[‡], Paul B. Frandsen[§], Rebecca B. Dikow[§], Abel Brown[¶], Sylvia Orti[¶], Melinda Peters[‡], Adam Metcalfe[§], Vicki A. Funk[‡], Laurence J. Dorr[‡]

[‡] National Museum of Natural History, Smithsonian Institution, Washington, DC, United States of America
[§] Office of the Chief Information Officer, Smithsonian Institution, Washington, DC, United States of America
[¶] WIDA, Santa Clara, CA, United States of America

2017 paper that described building a machine learning model to detect herbarium sheets that had been stained with mercury.

<https://doi.org/10.3897/bdj.5.e21139>



EXAMPLE: HERBARIUM SHEET MERCURY DETECTOR

I wanted to create a new model on same dataset (2017 is ancient history in Machine Learning)

All training images are shared on Figshare, but photos are resized and I wanted original metadata

EXAMPLE: HERBARIUM SHEET MERCURY DETECTOR

Unfortunately the "barcode" term from the supplementary materials is not an indexed field.

```
1 {
2   "id": "edanmdm-nmhbota_14961862",
3   "version": "",
4   "unitCode": "NMNHBOTANY",
5   "linkedId": "0",
6   "type": "edanmdm",
7   "content": {
8     "descriptiveNonRepeating": {
9       "record_id": "nmhbota_14961862",
10      "online_media": {
11        "mediaCount": 3,
12        "media": [
13          {
14            "thumbnail": "https://ids.si.edu/ids/deliveryService?id=ark:/65665/n375411afe-f942",
15            "id": "ark:/65665/n375411afe-f94248bca98277Seke99078",
16            "usage": {
17              "access": "CC0",
18              "guid": "http://n2t.net/ark:/65665/n375411afe-f942",
19              "type": "Images",
20              "content": "https://ids.si.edu/ids/deliveryService",
21              "resources": [
22                {
23                  "label": "High-resolution JPEG (8745x8745)",
24                  "url": "https://ids.si.edu/ids/download?id=4996",
25                },
26                {
27                  "label": "Screen Image",
28                  "url": "https://ids.si.edu/ids/download?id=4996",
29                },
30                {
31                  "label": "Thumbnail Image",
32                  "url": "https://ids.si.edu/ids/download?id=4996",
33                }
34              ]
35            }
36          }
37        ]
38      },
39      "guid": "http://n2t.net/ark:/65665/347483a98-44c6-45a1-b78c-a7bee16b75a2",
40      "title": "SALIX Geyeriana VAR MELZINA J.K. Henry",
41      "unitCode": "NMNHBOTANY",
42      "recordLink": "http://n2t.net/ark:/65665/347483a98-44c6-45a1-b78c-a7bee16b75a2",
43      "title": {
44        "label": "title",
45        "content": "Salix geyeriana var. melzina J.K. Henry",
46      },
47      "metadata_usage": {
48        "access": "CC0",
49      },
50      "data_source": "NMNH - Botany Dept.",
51    },
52    "indexedStructured": {
53      "date": {
54        "1898":
55      },
56      "tax_family": {
57        "geolocation": {
58          {
59            "l1": {
60              "type": "Continent",
61              "content": "North America",
62            },
63            "l2": {
64              "type": "Country",
65              "content": "United States",
66            },
67            "l3": {
68              "type": "State",
69              "content": "Oregon",
70            },
71            "Other": {
72              "type": "Locality",
73            }
74          }
75        },
76        "identifier": [
77          {
78            "label": "Barcode",
79            "content": "03420627",
80          },
81          {
82            "label": "USNM Number",
83            "content": "381076",
84          }
85        ],
86        "barcode": {
87          "label": "Barcode",
88          "content": "03420627",
89        },
90        "usnm": {
91          "label": "USNM Number",
92          "content": "381076",
93        },
94        "notes": [
95          {
96            "label": "Record Date Modified",
97            "content": "16 Aug 2019",
98          },
99          {
100            "label": "Specimen Count",
101            "content": "1",
102          }
103        ],
104        "names": [
105          {
106            "label": "Biogeographical Region",
107            "content": "73 - Northwestern U.S.A.",
108          },
109          {
110            "label": "Collector",
111            "content": "Frederick S. Coville",
112          }
113        ],
114        "place": {
115          "label": "Place",
116          "content": "Box Canyon, Lane Co., Oregon, United States, North America",
117        },
118        "dateSource": {
119          "label": "Date Source",
120          "content": "NMNH - Botany Dept.",
121        },
122        "taxonomicName": {
123          "label": "Taxonomy",
124          "content": "Plantae Dicotyledonae Salicales Salicaceae",
125        },
126      },
127      "url": "edanmdm-nmhbota_14961862",
128      "type": "NMNHBOTANY",
129      "description": "03420627",
130      "lastModified": "16 Aug 2019",
131      "lastIndexed": "16 Aug 2019",
132      "title": "Salix geyeriana var. melzina J.K. Henry",
133    }
134  }
```

FULL DATASET SOURCES: GITHUB AND AWS

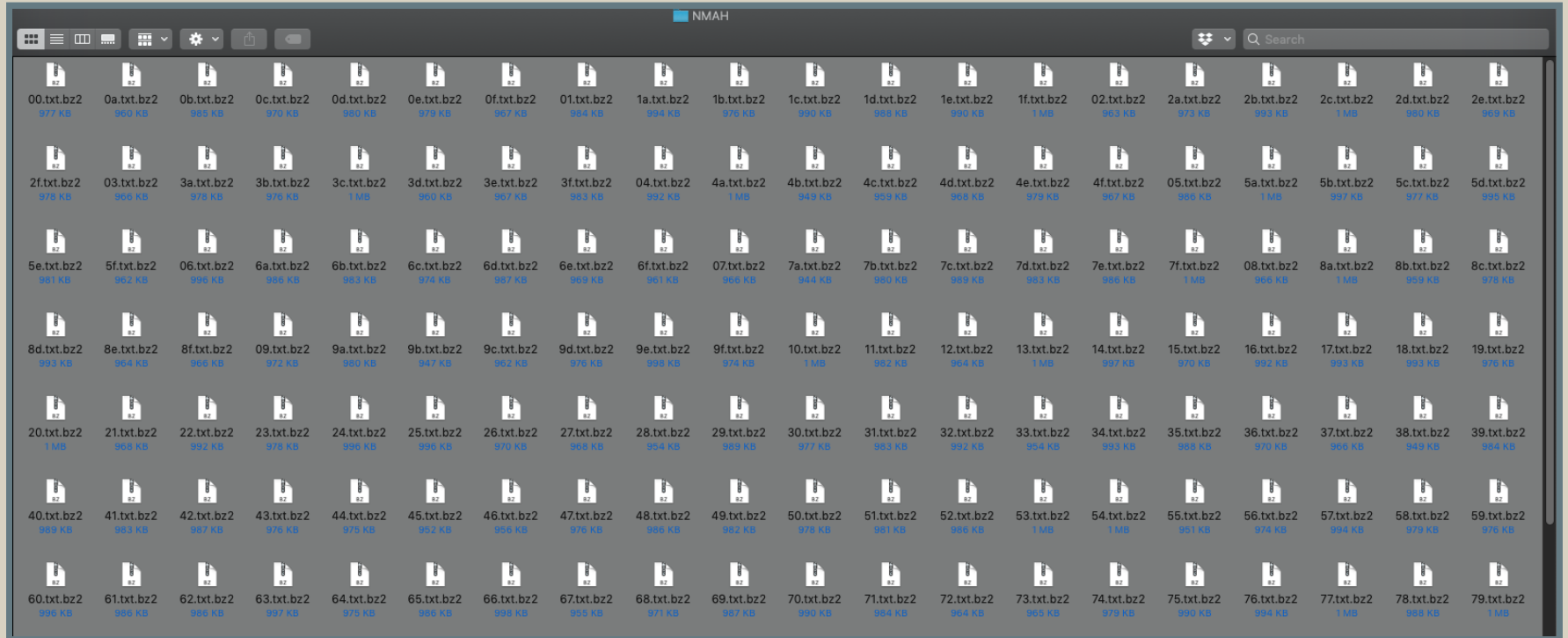
- [AWS S3](#) for all metadata and images
- [GitHub](#) for versioned metadata



HOW IT'S PACKAGED

- Files are serialized as line-delimited JSON and compressed with bzip2.
- Directories are organized by owning unit and files are distributed by first two characters of content serialization hash.

HOW IT'S PACKAGED



**BUMMER, WE NEED TO GO THROUGH EVERY
SINGLE FILE ONE AT A TIME?**

If I'm looking across all units, that's 9,728 files to
process!

**BUT THERE'S ACTUALLY A BENEFIT TO SO MANY FILES TO
PROCESS**

WE CAN MULTITASK!



ENTER DASK

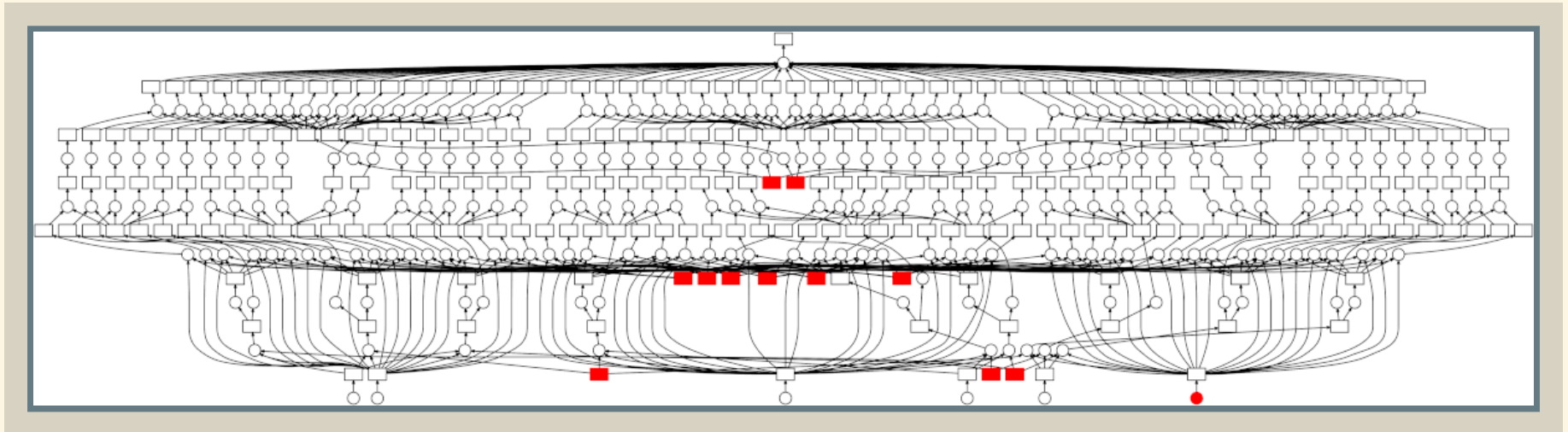


DASK

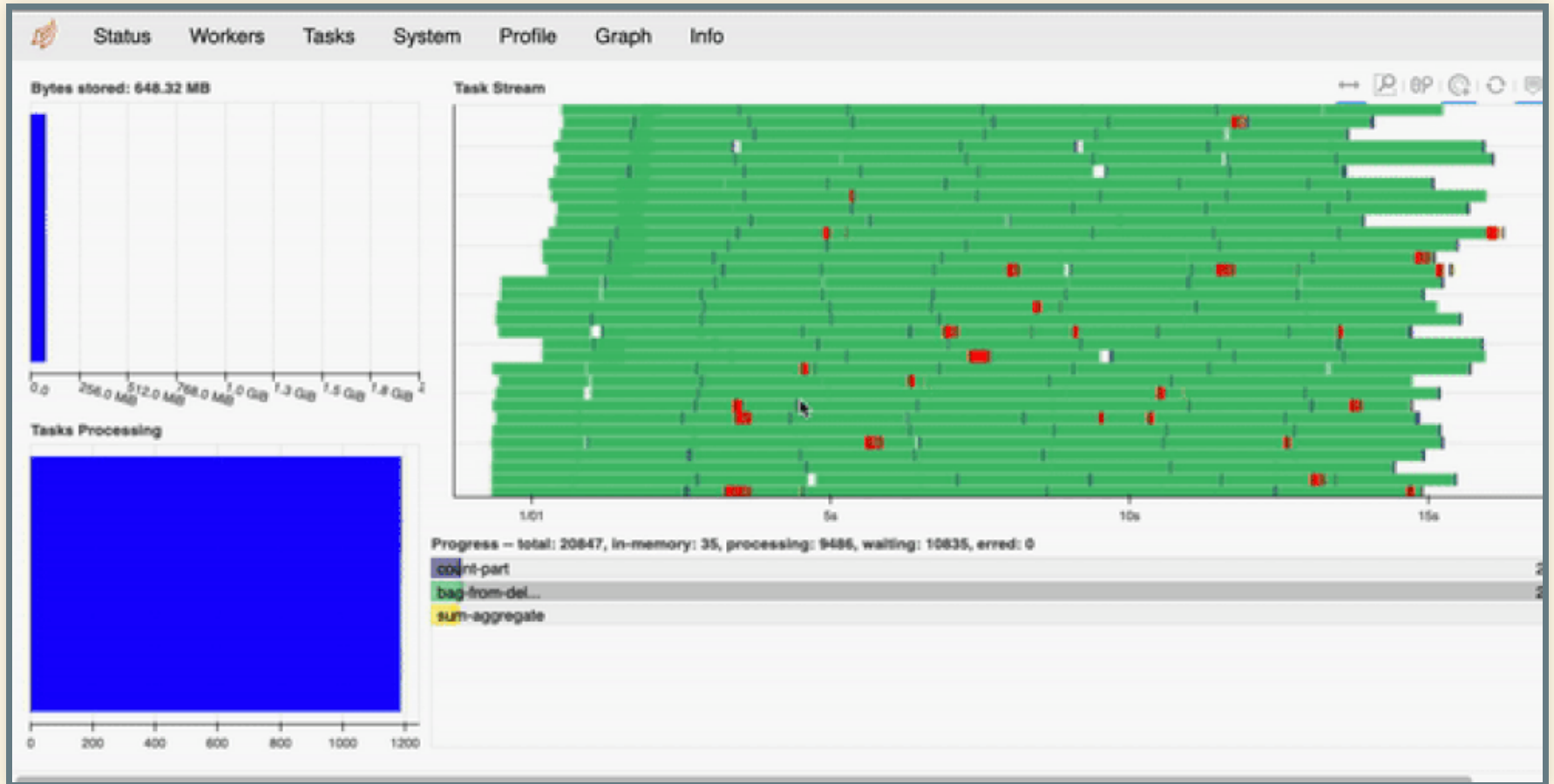
<https://dask.org/>

WHAT IS DASK?

Dask lets you set up a mini cluster on your machine ... or
on an actual compute cluster



DASK DASHBOARD



EXAMPLE: HERBARIUM SHEET MERCURY DETECTOR

```
just_ids = (gh_bag.map(extract_ids)
              .compute())
just_ids_df = pd.DataFrame(just_ids)
just_ids.head()
```

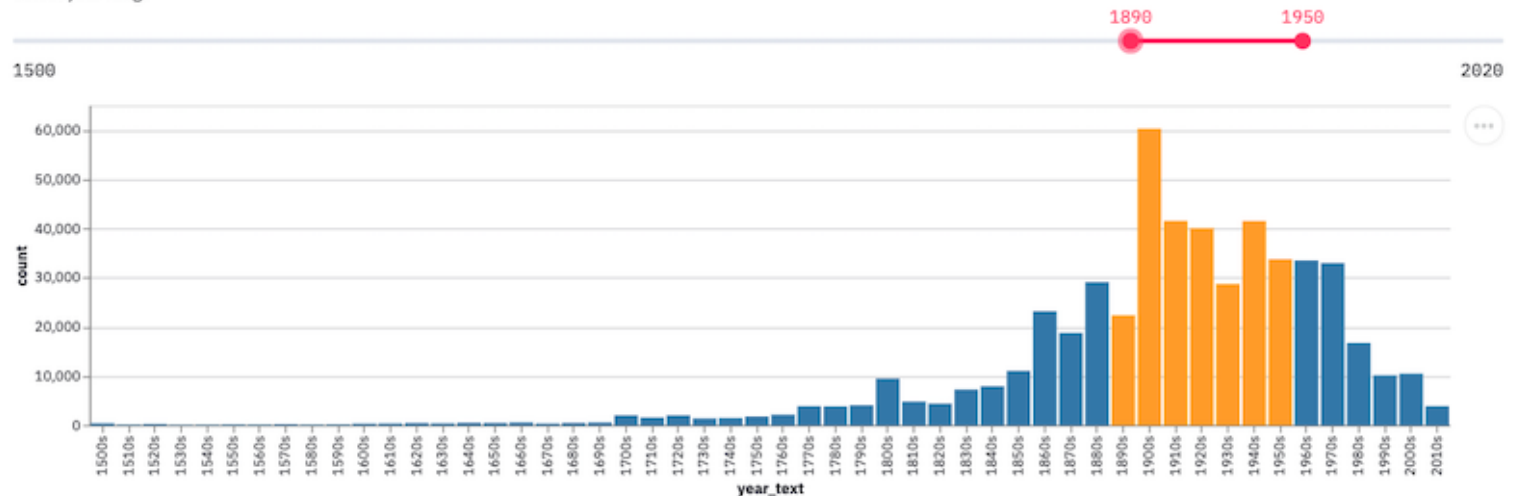
	edan_id	title	Barcode	specimen_guid	media_count	media_guid	ids_id	USNM Number
0	edanmdm-nmnhbotany_2095387	Ageratum elachycarpum B.L. Rob.	00512770	http://n2t.net/ark:/65665/3d361b9b9-91d0-4a3d-...	1.0	http://n2t.net/ark:/65665/m3890da9ed-3b6d-40da...	NMNH-00512770	1404283
1	edanmdm-nmnhbotany_2135634	Horsfieldia bartlettii Merr.	00513412	http://n2t.net/ark:/65665/319872980-bd6d-409a-...	1.0	http://n2t.net/ark:/65665/m374b20557-3460-4d9d...	NMNH-00513412-000001	2275439
2	edanmdm-nmnhbotany_2102106	Hypericum crenatum var. major Boiss.	00588520	http://n2t.net/ark:/65665/353447a40-80df-4892-...	1.0	http://n2t.net/ark:/65665/m3566c5f4e-c485-4c1b...	NMNH-00588520	129657
3	edanmdm-nmnhbotany_2167183	Asclepias brachystephana Engelm. ex Torr. in E...	00588654	http://n2t.net/ark:/65665/3cd0feeeb-abcd-415c-...	1.0	http://n2t.net/ark:/65665/m3330aaa7b-0613-4374...	NMNH-00588654-000001	18691
4	edanmdm-nmnhbotany_2683657	Waltheria indica L.	00595768	http://n2t.net/ark:/65665/3cbca3c96-e7ec-4eff-...	2.0	http://n2t.net/ark:/65665/m328e137c2-1b2e-4768...	NMNH-00595768	13147

DIGITAL HUMANITIES INTERNSHIP PROJECT

PATRICK MCMANUS FROM GEORGE MASON UNIVERSITY

National Museum of American History Date Breakdown

Select year range



Top Object Types

	object_type	count
0	Certified Proof	35832
1	Money	35811
2	certified proof	35809
3	Exchange Medium	35808
4	Face	35808

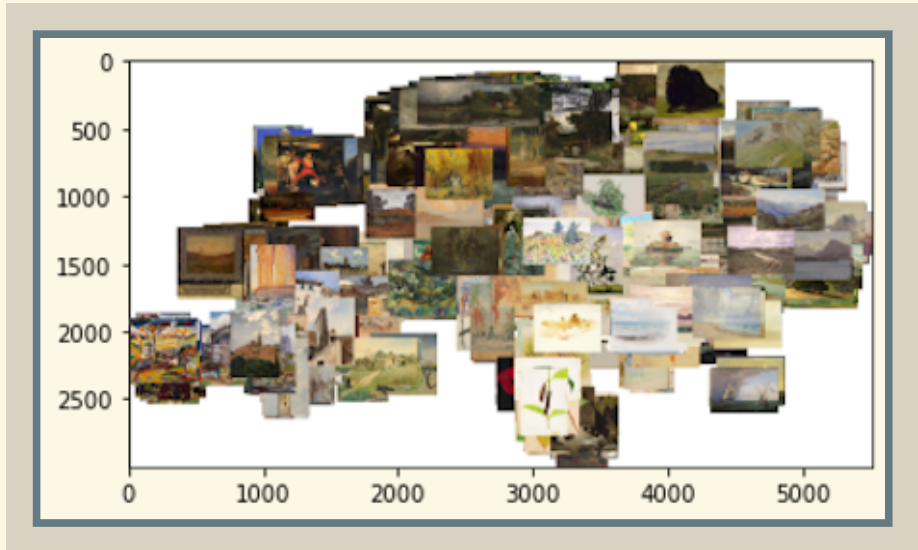
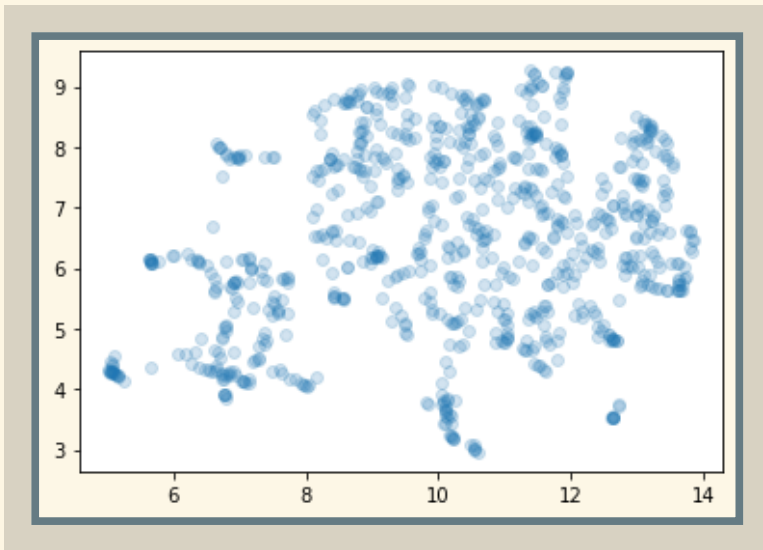
Top Places

	place	count
0	United States	101491
1	New York	17772
2	Germany	10526
3	New York City	8516
4	New Jersey	7709

Top Topics

	topic	count
0	Work and Industry: Natio...	83039
1	Coins, Currency and Meda...	36109
2	Cultural and Community L...	28091
3	Political and Military H...	18210
4	Work and Industry: Photo...	11388

EXAMPLE: SEMANTIC CLUSTERING AMERICAN ART PAINTINGS



Full interactive notebook (through Binder) available at <https://github.com/sidatasciencelab/siopenaccess>.

QUESTIONS?

<https://www.si.edu/openaccess>

https://github.com/MikeTrizna/CSVConf2021_siopenaccess