

## VREs/Virtual Labs/Science Gateways: Visions for addressing barriers, needs and requirements for the next generation of VREs.



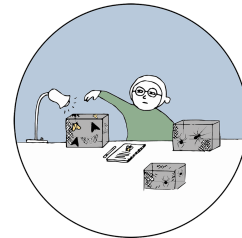
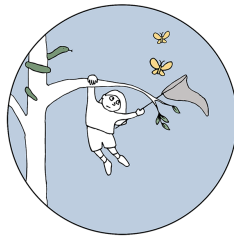
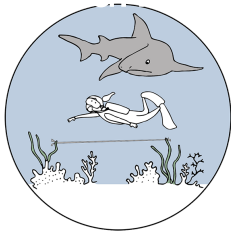
Alison Specht, TERN, University of Queensland, PARSEC



# A personal vision from an ecosystem scientist, facilitator of inter- and trans-disciplinary research

## Ecosystem scientist profile

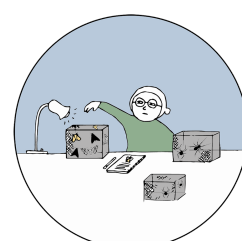
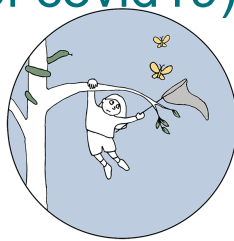
- interdisciplinary, uses lots of complex and heterogeneous data, e.g. organisms x genomics x manipulated experiments x machine-gathered data (e.g. satellite imagery, lower atmosphere gas exchange, hydrological data) x space x time.



# A personal vision from an ecosystem scientist, facilitator of inter- and trans-disciplinary research

## Ecosystem scientist profile

- interdisciplinary, uses lots of complex and heterogeneous data, e.g. organisms x genomics x manipulated experiments x machine-gathered data (e.g. satellite imagery, lower atmosphere gas exchange, hydrological data) x space x time.
- work internationally. Face-to-face opportunities are vastly important, but the challenge is how to work collaboratively between such opportunities (independent of covid19).



# Barriers looking for solutions

## **Findability and accessibility**

There are currently very few VRE's and most domain experts are either

- not aware of them (so don't know whether they can help),
- they are too expensive (e.g. AMAZON),
- are limited in geographic accessibility (e.g. only available for people in one country, for one set of investors), or
- take too much energy to learn how to use.

# Barriers looking for solutions

## **Findability and accessibility**

There are currently very few VRE's and most domain experts are either

- not aware of them (so don't know whether they can help),
- they are too expensive (e.g. AMAZON),
- are limited in geographic accessibility (e.g. only available for people in one country, for one set of investors), or
- take too much energy to learn how to use.

## **Trust**

A really big barrier. Sharing data and work in real time when it is not finished threatens ones' status! If you are in the same room, not too bad, but...with fellow professionals is bad enough, but with community/government partners???

# Horizon scanning

I suspect there will be some broad domain-specific tailoring for efficiency, but with interdisciplinary work this is always a challenge.

- A networked/interlaced suite of VREs with a mind to interoperability (e.g. Net CDF is used by one domain who accesses atmospheric/gas data, but not by all heavy users of those data),

# Horizon scanning

I suspect there will be some broad domain-specific tailoring for efficiency, but with interdisciplinary work this is always a challenge.

- A networked/interlaced suite of VREs with a mind to interoperability (e.g. Net CDF is used by one domain who accesses atmospheric/gas data, but not by all heavy users of those data),
- attached to
  - a data repository / observatory system, in this way promoting their services and data availability,
  - complimentary to synthesis centres, interdisciplinary facilitation locales, and
  - big research initiatives (can fulfill several roles)

# Horizon scanning

- Used as an adjunct to face-to-face meetings.
- open access...open access and open access
- Must be able to operate across country boundaries without impediment

# Virtual reality options

- Useful for decision making, scenario testing. Excellent for interface with the community (outside the domain expert group, however interdisciplinary).  
Long tradition of this in land management circles



# Trust and management considerations

- strict ethical practice. Link to doi and provenance tools.

# Trust and management considerations

- strict ethical practice. Link to doi and provenance tools.
- link with face-to-face opportunities

# Trust and management considerations

- strict ethical practice. Link to doi and provenance tools.
- link with face-to-face opportunities
- good visual links (enhanced zoom!)

# Trust and management considerations

- strict ethical practice. Link to doi and provenance tools.
- link with face-to-face opportunities
- good visual links (enhanced zoom!)
- VREs enabling citizen scientist participation are a logical extension of current work, e.g. eBirds. Will greatly enhance the value proposition of being involved.

# Trust and management considerations

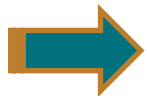
- strict ethical practice. Link to doi and provenance tools.
- link with face-to-face opportunities
- good visual links (enhanced zoom!)
- VREs enabling citizen scientist participation are a logical extension of current work, e.g. eBirds. Will greatly enhance the value proposition of being involved.
- Avoid proliferation of VREs. Think quality. Think sustainability.

# Trust and management considerations

- strict ethical practice. Link to doi and provenance tools.
- link with face-to-face opportunities
- good visual links (enhanced zoom!)
- VREs enabling citizen scientist participation are a logical extension of current work, e.g. eBirds. Will greatly enhance the value proposition of being involved.
- Avoid proliferation of VREs. Think quality. Think sustainability.
- A CoreTrustSeal equivalent standard for VREs.

# Trust and management considerations

- strict ethical practice. Link to doi and provenance tools.
- link with face-to-face opportunities
- good visual links (enhanced zoom!)
- VREs enabling citizen scientist participation are a logical extension of current work, e.g. eBirds. Will greatly enhance the value proposition of being involved.
- Avoid proliferation of VREs. Think quality. Think sustainability.
- A CoreTrustSeal equivalent standard for VREs.



They are not cheap if managed properly, the catch22.



Inter-University Research Institute Corporation  
National Institutes for the Humanities  
**Research Institute for  
Humanity and Nature**



**TOKYO  
METROPOLITAN  
UNIVERSITY**



**USP**



**ORCID**

**AGU100** ADVANCING  
EARTH AND  
SPACE SCIENCE



AGENCE NATIONALE DE LA RECHERCHE  
**ANR**



**BELMONT  
FORUM**



**CESAB**  
CENTRE FOR THE SYNTHESIS AND ANALYSIS  
OF BIODIVERSITY



**THE UNIVERSITY  
OF QUEENSLAND  
AUSTRALIA**



PROVIDING AUSTRALIAN  
RESEARCHERS WITH WORLD-CLASS  
HIGH-END COMPUTING SERVICES





Inter-University Research Institute Corporation  
National Institutes for the Humanities  
**Research Institute for  
Humanity and Nature**



**TOKYO  
METROPOLITAN  
UNIVERSITY**



**USP**



**Thankyou!**

**ORCID**

**AGU100**

**ADVANCING  
EARTH AND  
SPACE SCIENCE**



AGENCE NATIONALE DE LA RECHERCHE  
**ANR**



**BELMONT  
FORUM**



**THE UNIVERSITY  
OF QUEENSLAND  
AUSTRALIA**



**NCI  
AUSTRALIA**  
PROVIDING AUSTRALIAN  
RESEARCHERS WITH WORLD-CLASS  
HIGH-END COMPUTING SERVICES